

# BAKER

## Hereford Ranch



Saturday  
February 11, 2012

Celebrating over 66 years  
of Dedication to Beef Improvement

Where Quality Runs Generations Deep

## *Welcome,*

The Baker families would like to invite you to our annual production sale Saturday, February 11, 2012 at the ranch north of Rapid City, SD.

We held our cow sale last September and were blessed with many friends who helped make it a great success. We were proud of our cow herd and how they produced. We are also proud of our friends and repeat customers who had confidence in our program to come back year after year. We were so touched by all our customers asking us to stay in business. Right now we are in a time of transition trying to decide what we will do. We will have some bulls for sale next year.

We are very proud of the 85 bulls we have in this sale. They are very uniform in their type along with being deep, big middled, long bulls. They have top of the breed EPDs with many low birth weight bulls that should make heifer bulls. We have top sons again by CL 1 Domino 7110T and CL 1 Domino 849U and a much bigger selection by the impressive KB L1 Domino 842U. Every year we try to incorporate new blood into our gene pool. We hope you will like the newest sires we have purchased, raised or used AI. We feel they all have excellent calves and should be very maternal. We think this set of bulls is as close to our goal of producing calves that have calving ease, performance and have strong maternal strength. We want bulls that have thickness, volume and bulk along with correctness and eye appeal. We also want EPDs that fit our environment and goals. EPDs are a product of ratios and we ratio all our bulls together so our EPDs have less bias. By doing this we strive to make our EPDs more accurate for our customers.

If you are ever in the Black Hills area feel free to call us. We would be honored to show you our bulls and facilities.

We would like to thank all the people who made our cow dispersion a great success. To those who purchased bulls in our last year's sales and private treaty we want to give you our biggest thanks, for without you we could not stay in business. Finally a thanks to our friends, wives, family and those who helped make Ken's legacy a success!

Again, you are invited to our annual Friday night social, February 10, at the Ramkota Hotel from 6:00 to 8:00 pm. If you need any help feel free to call us or Art Handel. We really hope to see you February 11, 2012, at the ranch. You won't want to miss Leann and Karn's homemade dinner and fellowship with friends.



## **Baker Hereford Ranch**

***jkbaker@rap.midco.net • www.bakerherefords.com***

PO Box 2769 • Rapid City, SD 57709

Jim: 605/923-2925 • Cell: 605/381-9519

Jeff: 605/923-5632 • Cell: 605/381-2444

Sale Day Phones: 605/923-5632; 605/381-9519; 605/381-2444

# Baker

# ANNUAL PRODUCTION SALE

*66 Years - 1946-2012*

**. . . of dedication to breed & beef improvement**

*The Premier Performance Sale*

### Auctioneer

Jim Birdwell — 580-549-6636

### Sale Representatives

Art Handel, Jr. ....	Handel Marketing, (605) 391-8233
Levi Landers .....	American Hereford Association, (308) 730-1396
Marc and Jill Hotchkiss.....	Hereford America, (605) 866-4495
T.V. Jones .....	Record Stockman, (307) 632-5118
Jim Gies .....	Western Livestock Journal, (970) 590-0500
Dan Piroutek.....	Tri State Livestock News, (605) 391-6230
John Goggins.....	Western Livestock Reporter, (406) 373-5000
Don Ravellette .....	Cattle Business Weekly, (605) 685-5147

**Saturday**

**February 11, 2012**

**1 p.m. (MST) • at the ranch**

**85 Bulls Sell**

Another milestone has been reached as we witness the sale of Baker bulls from the recently dispersed cow herd. The cow herd dispersal was a Hereford Breed Leading success this past fall. Seedstock producers from across the land purchased the she stock and Herd Bulls that have made the KB prefix a trademark for quality for 60 plus years. Now you will have the opportunity to select the sons of the great Herd Sires and cow herd that was dispersed.

Again, what a set of bulls the Bakers are offering. The birth weights are right where you want them. The growth is at an optimum level and the milk numbers are indicative of the power of this herd.

Your next herd bull is in this 85 head offering. Registered or commercial producers, these fellas can fill your needs.

The Bakers have sold the working cow herd but they are not totally out of business. They will be here to back up their bulls as they move on with a new breeding program based on frozen embryos from the best of the best cows. They will operate on a smaller number basis as they try to cut the work load. They will be offering quality bulls and heifers in the years to come.

In my many years of Hereford merchandising, I can honestly say that the enthusiasm and demand for this breed is at an all time high. The F1 cross that I have been preaching about forever has found its place at the top of the commercial heap. Hereford replacement females are in short supply and demanding top dollar. The black cow herd has finally seen the \$\$\$ value of the HEREFORD BULL. GET ON BOARD!!!

Again, I wish to extend a welcome to all to take a look at an outstanding offering of bulls at Baker Hereford Ranch.

### HANDEL MARKETING, LLC

Licensed and Bonded

Art and Pat Handel	605/339-9278 (office)
1501 Summit Blvd	605/391-8233 (cell)
Rapid City, SD 57701	605/342-8805 (fax)

handelhereford@aol.com  
 www.arthandelscattle.com  
 www.theherefordconnection.com



Best Western

**Ramkota Hotel**

*Rapid City*

Rapid City has many hotels and motels if you would like help in making any reservations please feel free to contact any of us.

We have negotiated a special **\$69** rate with the **Ramkota Hotel at I-90 and LaCrosse Street**, so please call **605-343-8550** to make your reservations and ask for **The Baker Bull Sale rate**.

We will also be hosting a hors d'oeuvres and social Friday night, February 10th from 6-8 pm at the Ramkota, Suite 1118, please come and be our guests.

*The Ramkota offers free airport shuttle service, Minervas restaurant and an indoor water park.*

# REFERENCE SIREs

SIRE

**A**

## KB L1 DOMINO 842U DLF, IEF

1/23/08 • #42878437

\* = SOD, CHB, DLF, IEF

CE..... 2.2  
 BW..... 4.9  
 WW..... 47  
 YW..... 78  
 Milk.... 27  
 M&G... 51  
 REA.... .44  
 Marb...-.04  
 CHB...\$22



CL 1 DOMINO 9126J 1ET \*  
**KB L1 DOMINO 655 ET CHB, DLF, IEF**  
 MONTANA MISS 6154 DOD

CL 1 DOMINO 484 SOD, DLF, IEF  
**MONTANA MISS 310 DOD**  
 MONTANA MISS 837

HH ADVANCE 767G 1ET \*  
 CL 1 DOMINETTE 490 DOD  
 HH ADVANCE 311C SOD  
 MONTANA MISS J938  
 L1 DOMINO 890061 DLF, IEF  
 CL 1 DOMINETTE 761  
 JA L1 DOMINO 503 2ET SOD  
 MONTANA MISS J236 DOD

The high seller at our 2011 cow dispersion for \$22,500 for 3/4 interest to Fawcett's Elm Creek Ranch, SD. He was the standout bull from our 2008 calf crop and he grew into a very thick, meaty, long made 655 son by the 310 cow. This is the first big group of his sons to sell and they really look good. His daughters right off the cow averaged over \$2,500 and his son, Lot 26, could be one of the best we have raised. 842 goes back to two of our best maternal cow families that genetically have great maternal sires and top producing cows. 842 is a phenomenal, athletically sound bull that stamps his calves in his image.



Montana Miss 310

SIRE

**B**

## CL 1 DOMINO 7110T CHB

1/16/07 • #42788253

\* = SOD, CHB, DLF, IEF

CE..... 7.0  
 BW..... 1.0  
 WW.... 66  
 YW..... 102  
 Milk.... 26  
 M&G... 59  
 REA.... .18  
 Marb... .24  
 CHB...\$30



CL 1 DOMINO 246M SOD, DLF, IEF  
**CL 1 DOMINO 590R CHB, DLF, IEF**  
 CL 1 DOMINETTE 258M

CL 1 DOMINO 9126J 1ET \*  
**CL 1 DOMINETTE 332N DOD**  
 CL 1 DOMINETTE 875H

CL 1 DOMINO 9126J 1ET \*  
 CL 1 DOMINETTE 952J  
 HH ADVANCE 8093H CHB, DLF, IEF  
 CL 1 DOMINETTE 0113K 1ET  
 HH ADVANCE 767G 1ET \*  
 CL 1 DOMINETTE 490 DOD  
 CL 1 DOMINO 640F  
 CL 1 DOMINETTE 573E

A powerful breeding bull that is a true curve bender. We solely used him on heifers until this calf crop. His calves were so good that we had to use him on some cows. His offspring come small and shapely and they really grow. His daughters are long, feminine cows with square udders. His 19 daughters averaged \$2,750 and 7110 sold for \$13,000 for 1/2 interest to Dufur Herefords, OK. Dam, 332, is a Dam of Distinction and donor cow for Coopers. She is a very deep, heavy milking 9126J daughter that we really liked. Owned with Sehorn Herefords, CA, and Dufur Herefords, OK.



CL 1 Dominette 332N

SIRE

**C**

## CL 1 DOMINO 849U DLF, IEF

1/9/08 • #42897545

\* = SOD, CHB, DLF, IEF

CE..... 3.9  
 BW..... 2.8  
 WW.... 71  
 YW..... 102  
 Milk.... 31  
 M&G... 67  
 REA.... .35  
 Marb...-.03  
 CHB...\$33



CL 1 DOMINO 461P 1ET CHB, DLF, IEF  
**CL 1 DOMINO 648S CHB, DLF, IEF**  
 CL 1 DOMINETTE 249M

CL 1 DOMINO 3162N CHB, DLF, IEF  
**CL 1 DOMINETTE 591R 1ET**  
 CL 1 DOMINETTE 767G DOD

CL 1 DOMINO 1172L  
 CL 1 DOMINETTE 952J  
 CL 1 DOMINO 9126J 1ET \*  
 CL 1 DOMINETTE 867H  
 CL 1 DOMINO 9126J 1ET \*  
 CL 1 DOMINETTE 9151J  
 CL 1 DOMINO 522E SOD  
 CL 1 DOMINETTE 4145 DOD

We purchased this 648 son as a heifer bull because of his shape and pedigree. He did this very well plus become an explosive performance bull. He is what we have been trying to breed for years — good birth weights, strong performance, growth, muscle and retaining a proven maternal base. His first sons last year all out of first calf heifers averaged \$5,700. His sire, the \$40,000 648, is a proven low birth weight, high milk, 10 trait leader and his dam, 591, had four sons average \$12,000. 849 sold for \$20,000 for 1/2 interest to Bruce Anderson, Boehnke Herefords and Friedt Herefords, all of ND. A great breeding bull with awesome EPDs and super genetics.



# REFERENCE SIRES

SIRE

**D**

## HH ADVANCE 6001S

12/30/05 • #42673990

CE..... 2.1  
 BW..... 2.7  
 WW..... 42  
 YW..... 68  
 Milk.... 30  
 M&G... 51  
 REA.... 23  
 Marb... 13  
 CHB...\$23



\* = SOD, CHB, DLF, IEF  
 \*\* = DOD, DLF, HYF, IEF

CL 1 DOMINO 9126J 1ET \*  
**CL 1 DOMINO 206M**  
 CL 1 DOMINETTE 825H \*\*

CL 1 DOMINO 824H SOD, DLF, IEF  
**HH MISS ADVANCE 1088L DOD, DLF, IEF**  
 HH MS ADVANCE 8016H

HH ADVANCE 767G 1ET \*  
 CL 1 DOMINETTE 490 DOD  
 L1 DOMINO 95461 SOD, DLF, IEF  
 CL 1 DOMINETTE 618F  
 CL 1 DOMINO 640F  
 CL 1 DOMINETTE 6148F  
 HH ADVANCE 6052F SOD, DLF, IEF  
 HH MS ADVANCE 5006E DOD

A very long, short marked 206 son that is super smooth made and correct. He really stamps his calves in his image. They are pigmented, especially long with good thickness and eye appeal. His sire, 206, is a fabulous female sire and his dam, 1088, was an elite donor cow for Holdens and dam of their 7134 herd sire and other bulls for top breeders. We have used 6001 on heifers with excellent results and he is an aggressive pasture bull. Owned with Bruce Anderson, ND, and Gary Bathke, MN.



HH Miss Advance 1088L

SIRE

**E**

## KB L1 DOMINO 844U

2/24/08 • #42878443

CE..... -2.1  
 BW..... 7.7  
 WW..... 61  
 YW..... 100  
 Milk.... 34  
 M&G... 65  
 REA.... 29  
 Marb... 11  
 CHB...\$28



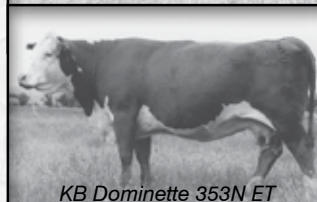
\* = SOD, CHB, DLF, IEF  
 \*\* = CHB, DLF, HYF, IEF  
 + = DOD, DLF, HYF, IEF

CL 1 DOMINO 3138N 1ET CHB  
**KB L1 DOMINO 521R \*\***  
 MONTANA MISS 310 DOD

JD BIG ARTHUR 180  
**KB DOMINETTE 353N ET DLF, HYF, IEF**  
 CL 1 DOMINETTE 7188G

CL 1 DOMINO 9126J 1ET \*  
 CL 1 DOMINETTE 825H +  
 CL 1 DOMINO 484 SOD, DLF, IEF  
 MONTANA MISS 837  
 SR BIG ARTHUR H201  
 SR MARKETTE L518  
 L1 DOMINO 920454 SOD  
 CL 1 DOMINETTE 0046

A super long, massive 521 son that has tremendous depth and thickness. We retained 844 to replace his sire and this athletic sire had a super calf crop. His sons have a lot of mass, performance, length and doability with no calving problems. Dam, 353, is a powerful donor cow that expressed a lot of total volume, thickness and milking ability. 844 is a free moving bull that will add performance and maternal strength. Owned with Sachtjen Herefords, NE.



KB Dominette 353N ET

SIRE

**F**

## CL 1 DOMINO 592R 1ET CHB

1/16/05 • #42571246

CE..... 3.6  
 BW..... 1.9  
 WW..... 49  
 YW..... 78  
 Milk.... 38  
 M&G... 63  
 REA.... 28  
 Marb... 20  
 CHB...\$26



\* = SOD, CHB, DLF, IEF

HH ADVANCE 767G 1ET \*  
**CL 1 DOMINO 9126J 1ET \***  
 CL 1 DOMINETTE 490 DOD

HH ADVANCE 629F CHB  
**CL 1 DOMINETTE 974J**  
 CL 1 DOMINETTE 543E

CL 1 DOMINO 500E SOD, DLF, IEF  
 HH MISS ADVANCE 251B  
 CL 1 DOMINO 166 SOD  
 CL 1 DOMINETTE 130  
 HH ADVANCE 3001C  
 HH MS ADVANCE 2019B  
 GB L1 DOMINO 250 SOD, DLF, IEF  
 CL 1 DOMINETTE 175

A great breeding bull with a proven genetic background. He is a proven calving ease, maternal giant with good thickness and depth. His daughters are just fabulous. They are big bodied, wide made females with excellent udders and good milk flow (106 WR). 592 is a full sister to some of Cooper's top cows including 440, their top donor cow and dam of their top sellers. There are a few top sons by 592 and herd bull prospects by his daughters. Marvin Fisher purchased a top son, 0102, last year that we will continue to use to increase his influence.



CL 1 Dominette 974J

# REFERENCE SIRES

**SIRE**  
**G**

## KB L1 DOMINO 826U

1/18/08 • #42878538

\* = SOD, CHB, DLF, IEF

CE..... 4.8  
BW..... 1.4  
WW..... 49  
YW..... 91  
Milk.... 25  
M&G... 50  
REA.... 30  
Marb... .07  
CHB...\$28



HH ADVANCE 7046G DLF, IEF  
**KB L1 DOMINO 218 CHB, DLF, IEF**  
MONTANA MISS 011

CL 1 DOMINO 180L CHB, DLF, IEF  
**KB L1 DOMINETTE 636**  
KB L1 DOMINETTE 323 DOD

CL 1 DOMINO 500E SOD, DLF, IEF  
HH MISS ADVANCE 496D DOD  
CL 1 DOMINO 5101E  
MONTANA MISS J336 DOD  
HH ADVANCE 767G 1ET \*  
CL 1 DOMINETTE 6113F  
HH ADVANCE 0072K DLF, IEF  
KB L1 DOMINETTE 111

Our 2009 high seller that went to Stroh Herefords, ND. He was a low birth weight, top performing 218 son by a top maternal cow family. He sires low birth weight, smooth made calves with thick tops, correct structure and good thickness. It is hard to find a heifer bull with these kind of EPDs by a proven cow family. Dam, 636, is a big, high volume, excellent milking 180L daughter that Johansen Herefords, UT, purchased. A daughter went to Climbin' Tree Ranch, CO, and her dam, 323, is a great Fisher cow that raised two sale toppers.



KB L1 Dominette 636

**SIRE**  
**H**

## HH ADVANCE 8086U

1/11/08 • #42897091

DLF, IEF

\* = SOD, CHB, DLF, IEF  
\*\* = DOD, DLF, HYF, IEF

CE..... 2.4  
BW..... 1.3  
WW..... 50  
YW..... 78  
Milk.... 31  
M&G... 56  
REA.... 57  
Marb... .16  
CHB...\$21



CL 1 DOMINO 206M  
**HH ADVANCE 5212R CHB, DLF, IEF**  
HH MISS ADVANCE 1028L DLF, IEF

HH ADVANCE 396N CHB, DLF, IEF  
**HH MISS ADVANCE 5143R DLF, IEF**  
HH MISS ADVANCE 2129M DOD, DLF, IEF

CL 1 DOMINO 9126J 1ET \*  
CL 1 DOMINETTE 825H \*\*  
HH ADVANCE 6052F SOD, DLF, IEF  
HH MISS ADVANCE 731G  
CL 1 DOMINO 824H SOD, DLF, IEF  
HH MISS ADVANCE 8037H  
CL 1 DOMINO 0124K 1ET DLF, IEF  
HH MISS ADVANCE 9049J

One of Holden's 2009 high sellers by 5212, their 2006 sale topper and a tremendous 396 daughter that is in their ET program. 8086 sires lighter birth weight calves that have a lot of length, depth and muscle expression. They also have good pigment, correctness and wide tops. He has a strong maternal pedigree where both of his grandams were donor cows. His first calves were eye catchers and well received. Owned with Nunnally, GA, Woodward, TN, and Coley, TN.



HH Miss Advance 5143R

**SIRE**  
**I**

## HH ADVANCE 9027W

1/4/09 • #42999314

DLF, HYF, IEF

\* = SOD, CHB, DLF, IEF  
\*\*\*\* = DLF, HYF, IEF

CE..... 4.1  
BW..... 0.2  
WW..... 53  
YW..... 75  
Milk.... 23  
M&G... 50  
REA.... 09  
Marb... .22  
CHB...\$19



L1 DOMINO 01384  
**L1 DOMINO 03571 CHB, DLF, IEF**  
L1 DOMINETTE 00532

CL 1 DOMINO 2136M DLF, IEF  
**HH MISS ADVANCE 6074S \*\*\***  
HH MISS ADVANCE 1013L

L1 DOMINO 98300 SOD  
L1 DOMINETTE 99374 \*\*\*  
L1 DOMINO 98324  
L1 DOMINETTE 94399  
CL 1 DOMINO 9126J 1ET \*  
CL 1 DOMINETTE 8124H 2ET  
HH ADVANCE 8060H 1ET  
HH MISS ADVANCE 989J

The cover bull from Holden's 2010 sale and one of the top sellers. We were looking for a sire bred differently and felt 9027 met the criteria. He turned out to be a low birth weight sire that passes on extra length. His calves are also thick quartered with good depth of side and big tops. His sire, 03571, has had as much influence in Holden's herd as any recent sires and his dam, 6074, is a great cow that many top breeders think is one of Holden's best. 9027's heifer calves were well received in our cow sale and we are proud of his sons. Owned with Harrell Herefords, OR, and Otley Herefords, WA.



HH Miss Advance 6074S

# REFERENCE SIRE

SIRE

J

**HH ADVANCE 9016W ET** DLF, HYF, IEF  
1/2/09 • #42999303

\* = SOD, CHB, DLF, IEF  
\*\* = DOD, DLF, IEF

CE..... 1.9  
BW..... 1.8  
WW..... 42  
YW..... 70  
Milk.... 29  
M&G.... 50  
REA.... .13  
Marb... .15  
CHB...\$20



CL 1 DOMINO 2136M DLF, IEF  
**HH ADVANCE 5061R ET** CHB, DLF, IEF  
L1 DOMINETTE 93541 DOD  
  
HH ADVANCE 0094K DLF, IEF  
**HH MISS ADVANCE 4016P ET \*\***  
HH MISS ADVANCE 0023K DOD, DLF, IEF

CL 1 DOMINO 9126J 1ET \*  
CL 1 DOMINETTE 8124H 2ET  
L1 DOMINO 910079  
L1 DOMINETTE 910390  
HH ADVANCE 836H SOD, DLF, IEF  
HH MISS ADVANCE 741G  
HH ADVANCE 6052F SOD, DLF, IEF  
HH MISS ADVANCE 694F

Holden's second high seller in 2010 at \$20,000 to Cooper's, MT, and B&D, KS. We liked his growth, volume and depth and his pedigree so we used him AI. He is a calving ease sire that breeds a lot of length, smoothness and correctness. His calves were also pigmented and solid marked with eye appeal. His dam, 4016, and grandam, 0023, were two power cows in Holden's herd. His first daughter to sell brought \$4,000 in our cow sale.



HH Miss Advance 4016P

SIRE

K

**CL 1 DOMINO 993W** DLF, HYF, IEF  
1/10/09 • #42982455

\* = SOD, CHB, DLF, IEF

CE..... 3.2  
BW..... 2.0  
WW..... 53  
YW..... 95  
Milk.... 25  
M&G.... 52  
REA.... .31  
Marb... .05  
CHB...\$24



L1 DOMINO 03396 CHB, DLF, IEF  
**CL 1 DOMINO 637S 1ET CHB**  
CL1 DOMINETTE 118L  
  
CL1 DOMINO 1172L  
**CL 1 DOMINETTE 5142R DOD**  
CL 1 DOMINETTE 810H

L1 DOMINO 00552  
L1 DOMINETTE 96893 DOD  
CL 1 DOMINO 888H 1ET  
CL 1 DOMINETTE 903J  
HH ADVANCE 767G 1ET \*  
CL 1 DOMINETTE 7192G DOD  
CL 1 DOMINO 640F  
CL 1 DOMINETTE 6117F

A full brother to Cooper's 2009 top seller, 860. 993 was one of their top sellers at \$21,000 to Bobby Edgar, TX. He is a stout, thick made 637 son with pigment, style and balance. We used him AI because he has a different pedigree for us and we were impressed with his type. His calves had low birth weights, extra pigment, smoothness and depth of side. He has two of Cooper's top cow families in his pedigree, thus we feel 993 could be a great female sire.



CL 1 Dominette 5142R

SIRE

L

**CL 1 DOMINO 7113T**  
1/16/07 • #42788256

\* = SOD, CHB, DLF, IEF

CE..... 2.5  
BW..... 1.4  
WW..... 43  
YW..... 65  
Milk.... 18  
M&G.... 40  
REA.... .19  
Marb... .25  
CHB...\$22



L1 DOMINO 00552  
**L1 DOMINO 03396 CHB, DLF, IEF**  
L1 DOMINETTE 96893 DOD  
  
HH ADVANCE 9070J SOD  
**CL1 DOMINETTE 166L DOD**  
CL1 DOMINETTE 876H 1ET

L1 DOMINO 97363  
L1 DOMINETTE 95365  
L1 DOMINO 93546  
L1 DOMINETTE 880276  
CL 1 DOMINO 500E SOD, DLF, IEF  
HH MISS ADVANCE 550E DOD  
L1 DOMINO 95461 SOD, DLF, IEF  
CL 1 DOMINETTE 178 DOD

We were so impressed with our 6105 bull we wanted another 03396 son. He was injured before we could use him naturally, thus we only used him artificially. He was a moderate framed, deep made, thick, red to the ground bull by 166L. She is a top producing Dam of Distinction cow that we really liked. We have not gotten a lot of calves but the ones we've gotten have been well received and had well above average carcass readings. He has three extra thick made sons selling.



# REFERENCE SIREs

**SIRE**  
**M**

## **KB L1 DOMINO 922W**

1/15/09 • #43002944

\* = SOD, CHB, DLF, IEF

CE..... 4.2  
BW..... 1.6  
WW.... 53  
YW..... 83  
Milk.... 30  
M&G... 56  
REA.... .61  
Marb...-.01  
CHB....\$28

HH ADVANCE 7046G DLF, IEF  
**KB L1 DOMINO 218 CHB, DLF, IEF**  
MONTANA MISS 011

CL 1 DOMINO 9126J 1ET \*  
**MONTANA MISS 740T**  
MONTANA MISS 1134

CL 1 DOMINO 500E SOD, DLF, IEF  
HH MISS ADVANCE 496D DOD  
CL 1 DOMINO 5101E  
MONTANA MISS J336 DOD  
HH ADVANCE 767G 1ET \*  
CL 1 DOMINETTE 490 DOD  
JA L1 DOMINO 503 2ET SOD  
MONTANA MISS J336 DOD

One of our 2010 top sellers that sold to Behm Herefords, ND. He is a big, stout 218 son by a top 9126J daughter that goes back to a great cow family. He was a top performer with thickness, depth and eye appeal. His calves come easy and they are growthy and smooth made with good substance.



**SIRE**  
**N**

## **KB L1 DOMINO 935W**

1/19/09 • #43002813

\* = SOD, CHB, DLF, IEF

\*\* = DOD, DLF, HYF, IEF

CE.....-3.0  
BW..... 5.1  
WW.... 54  
YW..... 92  
Milk.... 37  
M&G... 64  
REA.... .52  
Marb...-.01  
CHB....\$25

CL 1 DOMINO 206M  
**HH ADVANCE 5104R CHB, DLF, IEF**  
HH MISS ADVANCE 153L DOD, DLF, IEF

JD BIG ARTHUR 180  
**KB DOMINETTE 353N ET DLF, HYF, IEF**  
CL 1 DOMINETTE 7188G

CL 1 DOMINO 9126J 1ET \*  
CL 1 DOMINETTE 825H \*\*  
CL 1 DOMINO 986J SOD, DLF, IEF  
HH MISS ADVANCE 912J  
SR BIG ARTHUR H201  
SR MARKETTE L518  
L1 DOMINO 920454 SOD  
CL 1 DOMINETTE 0046

A stout made, deep, thick bodied 5104 son by the great 353N cow that is also the dam of 844U. He is a very correct, wide topped bull with a lot of eye appeal. He has a very maternal pedigree with a lot of performance backing him. He has super EPDs and the genetics to be a top sire. Owned with Quiet Hills Ranch, CA.



**MONTANA MISS 740T**  
**DAM OF 922W**



**KB DOMINETTE 353N ET**  
**DAM OF 844U & 935W**



# SALE BULLS

**LOT  
1**

## KB L1 DOMINO 0181X

8/21/10 • #43164358



\* = SOD, CHB, DLF, IEF  
\*\* = DOD, DLF, HYF, IEF

CL 1 DOMINO 206M  
**HH ADVANCE 6001S**  
HH MISS ADVANCE 1088L DOD, DLF, IEF

CL 1 DOMINO 9126J 1ET \*  
CL 1 DOMINETTE 825H \*\*  
CL 1 DOMINO 824H SOD, DLF, IEF  
HH MS ADVANCE 8016H  
BEL L DIAMOND 12Z ET  
CH AP AMY 41Y  
BAR-N CENTURION 921J  
KB L1 DOMINETTE 993

JNHR DIAMOND ET 414B SOD

**KB AMY 652**  
KB MISS CENTURION 3101

- A growthy, long sided 6001 son that is straight lined and correct. He is smooth up front and has good depth and thickness. These fall bulls were not pushed hard for top gain but fed to be sound and athletic.
- Ranks in the top 5% of the breed for Milk and top 7% for M&G.
- Dam, 652, is a broody, deep made 414 daughter that has a nice udder. A son is working for Hayden Ranch, WY, and Krippingling Herefords, SD, purchased a daughter.



**LOT 1 • KB L1 DOMINO 0181X**

BW..... 4.4  
WW..... 43  
YW..... 71  
Milk.... 30  
M&G... 51  
REA.... 27  
Marb... -02  
CHB.... \$19

Act BW..... 85  
Adj. 205.....687  
Adj. 365...1040  
SC.....37

**LOT  
2**

## KB L1 DOMINO 0185X

8/30/10 • #43164349



\* = SOD, CHB, DLF, IEF  
\*\* = DOD, DLF, HYF, IEF

CL 1 DOMINO 206M  
**HH ADVANCE 6001S**  
HH MISS ADVANCE 1088L DOD, DLF, IEF

CL 1 DOMINO 9126J 1ET \*  
CL 1 DOMINETTE 825H \*\*  
CL 1 DOMINO 824H SOD, DLF, IEF  
HH MS ADVANCE 8016H  
SNS 48D PRAIRIE DANDY 47G  
PHR SILVER STAND LASS 19G  
HH ADVANCE 492D SOD, DLF, IEF  
MONTANA MISS J042 DOD

SNS 47G SILVER DANDY 11J

**MONTANA MISS 210**  
MONTANA MISS 768 DOD

- A very long, stout made 6001 fall bull that is wide based and thick topped. He is really put together with balance and eye appeal.
- Ranks in the top 30% of the breed or better for WW, YW, Milk and M&G.
- Dam, 210, is a super long bodied, feminine fronted 11J daughter that had a super udder and good milk flow.



**LOT 2 • KB L1 DOMINO 0185X**

BW..... 4.6  
WW..... 48  
YW..... 81  
Milk.... 23  
M&G... 47  
REA.... 15  
Marb... .07  
CHB.... \$24

Act BW..... 86  
Adj. 205.....775  
Adj. 365...1172  
SC.....38

**LOT  
3**

## KB L1 DOMINO 0186X

8/31/10 • #43164351



\* = SOD, CHB, DLF, IEF  
\*\* = DOD, DLF, HYF, IEF

CL 1 DOMINO 206M  
**HH ADVANCE 6001S**  
HH MISS ADVANCE 1088L DOD, DLF, IEF

CL 1 DOMINO 9126J 1ET \*  
CL 1 DOMINETTE 825H \*\*  
CL 1 DOMINO 824H SOD, DLF, IEF  
HH MS ADVANCE 8016H  
CL 1 DOMINO 7120G ET  
HH MS ADVANCE 8084H  
HR ROBIN HODD 52F SOD, DLF, IEF  
MONTANA MISS J042 DOD

HH ADVANCE 0072K DLF, IEF

**MONTANA MISS 389**  
MONTANA MISS 1128

- A ring-eyed, smooth shouldered 6001 son that has length, thickness and eye appeal. This herd bull prospect has all the qualities and maternal background to be a top sire!
- Ranks in the top 1% of the breed for Milk and the top 5% for M&G.
- Dam, 389, is a coon-eyed, massive, excellent milking donor cow that sold for \$5,000 to Whispering Pines Farm, MN. She has raised top females and high selling bulls.



**LOT 3 • KB L1 DOMINO 0186X**

BW..... 3.3  
WW..... 44  
YW..... 69  
Milk.... 31  
M&G... 53  
REA.... 02  
Marb... .11  
CHB.... \$21

Act BW..... 85  
Adj. 205.....736  
Adj. 365...1122  
SC.....37.5

**LOT  
4**

BW..... 1.7  
 WW..... 41  
 YW..... 59  
 Milk..... 24  
 M&G... 44  
 REA... .10  
 Marb... .11  
 CHB... \$20

Act BW..... 77  
 Adj. 205.....725  
 Adj. 365...1139  
 SC..... 36.5

**KB L1 DOMINO 0187X**

9/2/10 • #43164350



\* = SOD, CHB, DLF, IEF  
 \*\* = DOD, DLF, HYF, IEF

CL 1 DOMINO 206M  
**HH ADVANCE 6001S**  
 HH MISS ADVANCE 1088L DOD, DLF, IEF

HH ADVANCE 0072K DLF, IEF  
**MONTANA MISS 292** DLF, IEF  
 MONTANA MISS 086

CL 1 DOMINO 9126J 1ET \*  
 CL 1 DOMINETTE 825H \*\*  
 CL 1 DOMINO 824H SOD, DLF, IEF  
 HH MS ADVANCE 8016H  
 CL 1 DOMINO 7120G ET  
 HH MS ADVANCE 8084H  
 JD BIG ARTHUR 180  
 MONTANA MISS 631 DOD

- Here is a short marked, thick made, long sided heifer bull prospect. He is a wide topped, correct 6001 son that has a good quarter.
- Ranks in the top 15% of the breed or better for BW and Milk.
- Dam, 292, is a long, thick bodied, short marked 0072 daughter that Milligan Herefords, IL purchased. Every calf has been a low birth weight and her Dam was a donor cow.



**• DAM OF LOT 3 •  
MONTANA MISS 389**

**LOT  
5**

BW..... 2.2  
 WW..... 42  
 YW..... 73  
 Milk..... 25  
 M&G... 46  
 REA... .30  
 Marb... .04  
 CHB... \$23

Act BW..... 82  
 Adj. 205.....734  
 Adj. 365...1081  
 SC..... 37

**KB L1 DOMINO 0189X**

9/4/10 • #43164366



\* = SOD, CHB, DLF, IEF  
 \*\* = DOD, DLF, HYF, IEF

CL 1 DOMINO 206M  
**HH ADVANCE 6001S**  
 HH MISS ADVANCE 1088L DOD, DLF, IEF

KB L1 DOMINO 218 CHB, DLF, IEF  
**KB L1 DOMINETTE 5104R**  
 KB L1 DOMINETTE 7130

CL 1 DOMINO 9126J 1ET \*  
 CL 1 DOMINETTE 825H \*\*  
 CL 1 DOMINO 824H SOD, DLF, IEF  
 HH MS ADVANCE 8016H  
 HH ADVANCE 7046G DLF, IEF  
 MONTANA MISS 011  
 CL 1 DOMINO 501 SOD, DLF, HYF, IEF  
 KB L1 DOMINET 5169

- A very well balanced, long sided, well marked 6001 son. He is smooth up front, deep sided and has the pedigree and look to be a heifer bull.
- Ranks in the top 10% of the breed for Milk and the top 20% for BW.
- Dam, 5104, was a really long, feminine, angular 218 daughter by a great cow, 7130. She is the dam of 1157 and 1158 cows that did so much here and 7130 raised the high selling bull in 2001.



**LOT 5 • KB L1 DOMINO 0189X**

**LOT  
6**

BW..... 3.0  
 WW..... 41  
 YW..... 70  
 Milk..... 27  
 M&G... 47  
 REA... .26  
 Marb... .04  
 CHB... \$20

Act BW..... 85  
 Adj. 205.....695  
 Adj. 365...1098  
 SC..... 36.5

**KB L1 DOMINO 0192X**

9/8/10 • #43164364



\* = SOD, CHB, DLF, IEF  
 \*\* = DOD, DLF, HYF, IEF

CL 1 DOMINO 206M  
**HH ADVANCE 6001S**  
 HH MISS ADVANCE 1088L DOD, DLF, IEF

JNHR DIAMOND ET 414B SOD  
**OXH CRYSTAL 2258**  
 OXH VICKI 5004

CL 1 DOMINO 9126J 1ET \*  
 CL 1 DOMINETTE 825H \*\*  
 CL 1 DOMINO 824H SOD, DLF, IEF  
 HH MS ADVANCE 8016H  
 BEL L DIAMOND 12Z ET  
 CH AP AMY 41Y  
 OXH ARROW DOM 2014  
 OXH PATTI 3065

- A short marked, very deep made, big middled 6001 son by a super 414 daughter. 0192 has a lot of width throughout and a deep, thick quarter.
- Ranks in the top 5% for Milk and top 35% for BW.
- Dam, 2258, is a broody, massive, long made 414 daughter with tremendous depth and thickness. This nine year old cow brought \$4,000 to Milligan Herefords, IL and she has had four other top sons sell.



**LOT 6 • KB L1 DOMINO 0192X**



**• DAM OF LOT 6 •  
OXH CRYSTAL 2258**

**LOT  
7**

BW..... 5.1  
 WW..... 46  
 YW..... 79  
 Milk..... 27  
 M&G... 50  
 REA... .19  
 Marb... .07  
 CHB... \$22

Act BW..... 90  
 Adj. 205.....723  
 Adj. 365...1082  
 SC..... 36

**KB L1 DOMINO 0193X**

9/10/10 • #43164348



\* = SOD, CHB, DLF, IEF  
 \*\* = DOD, DLF, HYF, IEF

CL 1 DOMINO 206M  
**HH ADVANCE 6001S**  
 HH MISS ADVANCE 1088L DOD, DLF, IEF

BAR-N CENTURION 921J  
**KB MISS CENTURION 186**  
 MONTANA MISS 7123

CL 1 DOMINO 9126J 1ET \*  
 CL 1 DOMINETTE 825H \*\*  
 CL 1 DOMINO 824H SOD, DLF, IEF  
 HH MS ADVANCE 8016H  
 BP MANNING ET 109G CHB  
 LCI 83A TRANSALTA LASS 36C  
 JA L1 DOMINO 3565  
 MONTANA MISS J916 DOD

- We really like this long, stylish, well balanced 6001 son. He is a correct made, thick topped prospect with good volume and depth of side.
- Ranks in the top 5% of the breed for Milk, top 10% for M&G and top 30% for YW.
- Dam, 186, was a big, super long, very productive cow that has had five other top sons sell in our sale. She was a great milker that always weaned a good one.



**LOT 7 • KB L1 DOMINO 0193X**

**LOT  
8**

BW..... 4.2  
 WW..... 49  
 YW..... 79  
 Milk..... 26  
 M&G... 50  
 REA... .19  
 Marb... .08  
 CHB... \$24

Act BW..... 87  
 Adj. 205.....723  
 Adj. 365...1132  
 SC..... 36.5

**KB L1 DOMINO 0194X**

9/13/10 • #43164355



\* = SOD, CHB, DLF, IEF  
 \*\* = DOD, DLF, HYF, IEF

CL 1 DOMINO 206M  
**HH ADVANCE 6001S**  
 HH MISS ADVANCE 1088L DOD, DLF, IEF

CL 1 DOMINO 3138N 1ET CHB  
**MONTANA MISS 520R** DLF, IEF  
 MONTANA MISS 307

CL 1 DOMINO 9126J 1ET \*  
 CL 1 DOMINETTE 825H \*\*  
 CL 1 DOMINO 824H SOD, DLF, IEF  
 HH MS ADVANCE 8016H  
 CL 1 DOMINO 9126J 1ET \*  
 CL 1 DOMINETTE 825H \*\*  
 HH ADVANCE 0072K DLF, IEF  
 MONTANA MISS 130

- A solid marked, moderate framed 6001 son that has a lot of length. He is a deep made, big bodied bull with thickness and width.
- Ranks in the top 10% of the breed for Milk and M&G; top 30% for WW and YW.
- Dam, 520, is a highly pigmented, broody 3138 daughter that is short marked. She has a lot of depth of body, width throughout and a beautiful udder.

**LOT  
9**

BW..... 4.6  
 WW..... 47  
 YW..... 85  
 Milk.... 29  
 M&G... 53  
 REA... .18  
 Marb... -.02  
 CHB... \$22

Act BW..... 89  
 Adj. 205.....789  
 Adj. 365...1175  
 SC..... 37

**KB L1 DOMINO 0197X**

9/28/10 • #43164361



\* = SOD, CHB, DLF, IEF  
 \*\* = DOD, DLF, HYF, IEF

CL 1 DOMINO 206M  
**HH ADVANCE 6001S**  
 HH MISS ADVANCE 1088L DOD, DLF, IEF

JNHR DIAMOND ET 414B SOD  
**OXH CRYSTAL 1083** \*\*  
 OXH TONI 6261

CL 1 DOMINO 9126J 1ET \*  
 CL 1 DOMINETTE 825H \*\*  
 CL 1 DOMINO 824H SOD, DLF, IEF  
 HH MS ADVANCE 8016H  
 BEL L DIAMOND 12Z ET  
 CH AP AMY 41Y  
 OXH ANDREW 8111 SOD  
 OXH LINDA 2148

- Here is a top herd bull prospect that ties everything together. He is a stout, long, thick, deep made 6001 son that has smoothness and eye appeal.
- Ranks in the top 5% for Milk and M&G, and the top 20% for YW.
- Dam, 1083, was a big, long made 414 donor cow that ranks Dam of Distinction with a 108 WR and +30 Milk.



**LOT 9 • KB L1 DOMINO 0197X**

**LOT  
10**

BW..... 1.2  
 WW..... 35  
 YW..... 61  
 Milk.... 24  
 M&G... 41  
 REA... .14  
 Marb... .13  
 CHB... \$18

Act BW..... 70  
 Adj. 205.....625  
 Adj. 365.....989  
 SC..... 36

**KB L1 DOMINO 0198X**

9/25/10 • #43164354



\* = SOD, CHB, DLF, IEF  
 \*\* = DOD, DLF, HYF, IEF

CL 1 DOMINO 206M  
**HH ADVANCE 6001S**  
 HH MISS ADVANCE 1088L DOD, DLF, IEF

CL 1 DOMINO 484 SOD, DLF, IEF  
**MONTANA MISS 394**  
 MONTANA MISS 9217

CL 1 DOMINO 9126J 1ET \*  
 CL 1 DOMINETTE 825H \*\*  
 CL 1 DOMINO 824H SOD, DLF, IEF  
 HH MS ADVANCE 8016H  
 L1 DOMINO 890061 DLF, IEF  
 CL 1 DOMINETTE 761  
 HH ADVANCE 6046F  
 MONTANA MISS 421

- A moderate framed, solid marked 6001 son that looks like a heifer bull. He is smooth shouldered and long sided, yet has good width, depth and thickness.
- Ranks in the top 10% of the breed for both BW and Milk.
- Dam, 394, was a broody, deep bodied 484 daughter that has extra length and backed by top cows. Sons sold to Imig Herefords and Cut Creek Herefords, both of NE, and Knippling Herefords of SD.

**LOT  
11**

BW..... 2.1  
 WW..... 34  
 YW..... 57  
 Milk.... 32  
 M&G... 48  
 REA.... .25  
 Marb... .18  
 CHB.... \$20

Act BW..... 80  
 Adj. 205.....567  
 Adj. 365.....953  
 SC..... 35

**KB L1 DOMINO 0200X**

10/19/10 • #43164363



\* = SOD, CHB, DLF, IEF  
 \*\* = DOD, DLF, HYF, IEF

CL 1 DOMINO 206M  
**HH ADVANCE 6001S**  
 HH MISS ADVANCE 1088L DOD, DLF, IEF

CL 1 DOMINO 9126J 1ET \*  
**CL 1 DOMINETTE 2142M 1ET**  
 CL 1 DOMINETTE 405

CL 1 DOMINO 9126J 1ET \*  
 CL 1 DOMINETTE 825H \*\*  
 CL 1 DOMINO 824H SOD, DLF, IEF  
 HH MS ADVANCE 8016H  
 HH ADVANCE 767G 1 ET \*\*  
 CL 1 DOMINETTE 490 DOD  
 CL 1 DOMINO 159  
 CL 1 DOMINETTE 801

- Here is a royally bred 6001 son by an elite Cooper cow. He is a moderate framed, wide backed October bull with good thickness and muscle mass.
- Ranks in the top 1% of the breed for Milk and top 20% or better for BW and M&G.
- Dam, 2142, is a massive, long bodied excellent milking 9126 daughter that was a donor cow for Cooper's and us. She sold in our cow sale for \$4,750 to WD Herefords of TX.



• DAM OF LOT 11 •  
**CL 1 DOMINETTE 2142M 1ET**

**LOT  
12**

BW..... 1.7  
 WW..... 61  
 YW..... 94  
 Milk.... 25  
 M&G... 55  
 REA.... .21  
 Marb... .17  
 CHB.... \$28

Act BW..... 78  
 9-14 Wt.... 845  
 Adj. 205.... 803  
 WDA..... 3.37

**KB L1 DOMINO 101Y**

1/6/11 • #43179379



\* = SOD, CHB, DLF, IEF  
 \*\* = DOD, DLF, HYF, IEF

CL 1 DOMINO 590R CHB, DLF, IEF  
**CL 1 DOMINO 7110T CHB**  
 CL 1 DOMINETTE 332N DOD

CL 1 DOMINO 417P CHB, DLF, IEF  
**KB L1 DOMINETTE 8159U**  
 L1 DOMINETTE 4136P

CL 1 DOMINO 246M SOD, DLF, IEF  
 CL 1 DOMINETTE 258M  
 CL 1 DOMINO 9126J 1ET \*  
 CL 1 DOMINETTE 875H  
 CL 1 DOMINO 212M \*  
 CL 1 DOMINETTE 0112K 1ET  
 OXH DOMINO 2341  
 OXH CRYSTAL 2258

- Here is a deep, high volume 7110 son that looks like a heifer bull. He has extra length from end to end and a lot of total dimension. This solid marked, thick made bull is a top prospect with outstanding EPD's and a 113 WR.
- Ranks in the top 5% of the breed for WW, YW, and M&G; and in the top 10% for Milk.
- Dam, 8159, is a deep bodied, long, solid marked 417 daughter that sold to Roe Herefords of AL. Her dam, 4136, is a ring eyed, high volume cow that produced KB L1 Domino 6152. 6152 is a 218 son we used that was purchased by Douthit Herefords 4V Ranch, of KS.



**LOT 12 • KB L1 DOMINO 101Y**



• DAM OF LOT 13 •  
**MONTANA MISS 810U**



• DAM OF LOT 15 •  
**MONTANA MISS 852U ET**

**LOT  
13**

BW..... 3.2  
 WW..... 45  
 YW..... 72  
 Milk.... 26  
 M&G... 49  
 REA.... .25  
 Marb... .12  
 CHB.... \$22

Act BW..... 55  
 9-14 Wt.... 810  
 Adj. 205.... 744  
 WDA..... 3.25

**KB L1 DOMINO 103Y**

1/8/11 • #43179275



\* = SOD, CHB, DLF, IEF  
 \*\* = DOD, DLF, HYF, IEF

KB L1 DOMINO 655 ET CHB, DLF, IEF  
**KB L1 DOMINO 842U** DLF, IEF  
 MONTANA MISS 310 DOD

KB L1 DOMINO 632 CHB, DLF, IEF  
**MONTANA MISS 810U**  
 MONTANA MISS 494P ET

CL 1 DOMINO 9126J 1ET \*  
 MONTANA MISS 6154 SOD  
 CL 1 DOMINO 484 SOD, DLF, IEF  
 MONTANA MISS 837  
 CL 1 DOMINO 417P CHB, DLF, IEF  
 KB L1 DOMINETTE 415P  
 JH MARK 9454 1ET  
 MONTANA MISS J336 DOD

- A big, stout, massive 842 son that is definitely a herd bull prospect. This power house is extra long, deep and thick made. 103Y is a pigmented TWIN with a lot of spring of rib and total mass. He has the genetic potential to be a herd changer!
- Ranks in the top 10% for Milk and top 50% for BW, WW, YW and M&G.
- Dam, 810, was one of our favorites as a heifer and after her first two calves she is a proven producer. She is a big, high volume, thick made cow purchased by Gary Friedt, of ND. Her first daughter sold to Hula Herefords of NE in our cow sale.

**LOT 13 • KB L1 DOMINO 103Y****LOT  
14**

BW..... 4.2  
 WW..... 64  
 YW..... 104  
 Milk.... 27  
 M&G... 59  
 REA.... .24  
 Marb... .15  
 CHB.... \$30

Act BW..... 85  
 9-14 Wt.... 775  
 Adj. 205.... 782  
 WDA..... 3.19

**KB L1 DOMINO 114Y**

1/14/11 • #43179388



\* = SOD, CHB, DLF, IEF  
 \*\* = DOD, DLF, HYF, IEF

CL 1 DOMINO 590R CHB, DLF, IEF  
**CL 1 DOMINO 7110T** CHB  
 CL 1 DOMINETTE 332N DOD

CL 1 DOMINO 417P CHB, DLF, IEF  
**KB L1 DOMINETTE 9147**  
 KB AMY 1158 DOD

CL 1 DOMINO 246M SOD, DLF, IEF  
 CL 1 DOMINETTE 258M  
 CL 1 DOMINO 9126J 1ET \*  
 CL 1 DOMINETTE 875H  
 CL 1 DOMINO 212M \*\*  
 CL 1 DOMINETTE 0112K 1ET  
 JNHR DIAMOND ET 414B SOD  
 KB L1 DOMINETTE 7130

- A yellow haired, short marked, long patterned, deep ribbed 7110 son by a great first calf heifer. He possesses a wide top and rump with a thick butt and large testicles. This top prospect has a lot of good traits going for him along with breed leading EPD's.
- Ranks in the top 1% for WW, YW and M&G; top 5% for Milk.
- Dam, 9147, is a super long bodied, smooth fronted 417 daughter that sold for \$4,250 to Lewis Byers, of IA. Byers also purchased foundation cow 1158. A great cow family that produced super females and a lot of revenue.

**LOT 14 • KB L1 DOMINO 114Y****LOT  
15**

BW..... 4.4  
 WW..... 50  
 YW..... 83  
 Milk.... 27  
 M&G... 52  
 REA.... .41  
 Marb... -.05  
 CHB.... \$24

Act BW..... 89  
 9-14 Wt.... 805  
 Adj. 205.... 755  
 WDA..... 3.33

**KB L1 DOMINO 115Y**

1/15/11 • #43179294



\* = SOD, CHB, DLF, IEF  
 \*\* = DOD, DLF, HYF, IEF

KB L1 DOMINO 655 ET CHB, DLF, IEF  
**KB L1 DOMINO 842U** DLF, IEF  
 MONTANA MISS 310 DOD

KB L1 DOMINO 218 CHB, DLF, IEF  
**MONTANA MISS 852U ET**  
 MONTANA MISS 756

CL 1 DOMINO 9126J 1ET \*  
 MONTANA MISS 6154 DOD  
 CL 1 DOMINO 484 SOD, DLF, IEF  
 MONTANA MISS 837  
 HH ADVANCE 7046G DLF, IEF  
 MONTANA MISS 011  
 JA L1 DOMINO 503 2ET SOD  
 MONTANA MISS 503

- Here is a burly, deep sided, thick bodied 842 son with a wide top and a big butt. 115 is a free moving, top prospect that will add extra pounds to a calf crop. Big body, big performance and big pay weight!
- Ranks in the top 5% for Milk and M&G; top 25% for WW and YW.
- Dam, 852, is a long, stylish 218 daughter that had a lot of friends at our cow sale. Carr Herefords of NE got her bought at \$6,000. Her first son brought \$6,000 to Behm Herefords of ND and she has a 112 WR. Grandam, 756 was an elite donor cow. Her daughter has Lots 34, 49 and 54 selling.

**LOT 15 • KB L1 DOMINO 115Y**

**LOT  
16**

BW..... 4.6  
 WW..... 46  
 YW..... 78  
 Milk.... 30  
 M&G... 52  
 REA.... .29  
 Marb... .05  
 CHB.... \$21

Act BW..... 90  
 9-14 Wt.... 705  
 Adj. 205.... 661  
 WDA..... 2.91

**KB L1 DOMINO 116Y**

1/15/11 • #43179289



\* = SOD, CHB, DLF, IEF  
 \*\* = DOD, DLF, HYF, IEF

KB L1 DOMINO 655 ET CHB, DLF, IEF  
**KB L1 DOMINO 842U** DLF, IEF  
 MONTANA MISS 310 DOD

CL 1 DOMINO 592R 1ET CHB  
**MONTANA MISS 845U**  
 JA L1 DOMINETTE 0220

CL 1 DOMINO 9126J 1ET \*  
 MONTANA MISS 6154 DOD  
 CL 1 DOMINO 484 SOD, DLF, IEF  
 MONTANA MISS 837  
 CL 1 DOMINO 9126J 1ET \*  
 CL 1 DOMINETTE 974J  
 CL 1 DOMINO 484 SOD, DLF, IEF  
 JA L1 DOMINETTE 7809 DOD

- A moderate fronted 842 son that has lots of volume and spring of rib. He is very trim and smooth up front yet has a thick top and long quarter. Here is a top maternal prospect that really moves out.
- Ranks in the top 5% of breed for Milk and M&G; top 40% or better for WW and YW.
- Dam, 845, is a highly pigmented, broody, deep 592 daughter with a +32 Milk and 117 WR. She sold to Coon Herefords of KS and a daughter sold to Dwight Logterman of NE. Her dam, 0220, has Lot 62.

**LOT 16 • KB L1 DOMINO 116Y****• DAM OF LOT 16 •  
MONTANA MISS 845U****• DAM OF LOT 17 •  
MONTANA MISS 9114W****LOT  
17**

BW..... 5.2  
 WW..... 65  
 YW..... 101  
 Milk.... 33  
 M&G... 65  
 REA.... .26  
 Marb... .05  
 CHB.... \$30

Act BW..... 90  
 9-14 Wt.... 750  
 Adj. 205.... 756  
 WDA..... 3.11

**KB L1 DOMINO 118Y**

1/16/11 • #43179382



\* = SOD, CHB, DLF, IEF  
 \*\* = DOD, DLF, HYF, IEF

CL 1 DOMINO 648S CHB, DLF, IEF  
**CL 1 DOMINO 849U** DLF, IEF  
 CL 1 DOMINETTE 591R 1ET

CL 1 DOMINO 592R 1ET CHB  
**MONTANA MISS 9114W**  
 MONTANA MISS 310 DOD

CL 1 DOMINO 461P 1ET CHB, DLF, IEF  
 CL 1 DOMINETTE 249M  
 CL 1 DOMINO 3162N CHB, DLF, IEF  
 CL 1 DOMINETTE 767G DOD  
 CL 1 DOMINO 89126J 1ET \*  
 CL 1 DOMINETTE 974J  
 CL 1 DOMINO 484 SOD, DLF, IEF  
 MONTANA MISS 837

- A royally bred, solid marked 849 son with worlds of potential. 118Y is a very long made, deep ribbed, wide topped herd bull prospect we really like. He has big red testicles, travels well and has outstanding EPD's.
- Ranks in the top 1% for WW, Milk, and M&G; top 5% for YW.
- Dam, 9114, is a tremendous first calf heifer by the great 310 cow that Johansen Herefords of UT purchased for \$5,250. She is a deep flanked, broody 592 daughter with a super udder, 106 WR and a maternal sister to herd bulls 521 and 842.
- Retaining 1/4 semen interest, 1/4 semen sales.

**LOT 17 • KB L1 DOMINO 118Y**

**LOT  
18**

BW..... 5.3  
 WW..... 64  
 YW..... 103  
 Milk.... 27  
 M&G... 59  
 REA.... .24  
 Marb... .13  
 CHB.... \$29

Act BW..... 93  
 9-14 Wt.... 730  
 Adj. 205.... 740  
 WDA..... 3.04

**KB L1 DOMINETTE 120Y**

1/17/11 • #43179386



\* = SOD, CHB, DLF, IEF  
 \*\* = DOD, DLF, HYF, IEF

CL 1 DOMINO 590R CHB, DLF, IEF  
**CL 1 DOMINO 7110T CHB**  
 CL 1 DOMINETTE 332N DOD

CL 1 DOMINO 417P CHB, DLF, IEF  
**KB L1 DOMINETTE 9133W**  
 KB AMY 1157 DOD

CL 1 DOMINO 246M SOD, DLF, IEF  
 CL 1 DOMINETTE 258M  
 CL 1 DOMINO 9126J 1ET \*  
 CL 1 DOMINETTE 875H  
 CL 1 DOMINO 212M \*  
 CL 1 DOMINETTE 0112K 1ET  
 JNHR DIAMOND ET 414B SOD  
 KB L1 DOMINETTE 7130

- A full blood brother to Lot 14 and this stout made bull is very similar. 120Y is a freckled faced, short marked, long made 7110 son that has a lot of depth through his middle and quarter along with a wide top. Super prospect that has a lot of genetic potential.
- Ranks in the top 1% of breed for WW, YW and M&G; top 5% for Milk.
- Dam, 9133, is a very long, feminine first calf 417 heifer that Knippling Herefords of SD purchased. Super cow family that has been very productive and produced a lot of top offspring.

**LOT 18 • KB L1 DOMINETTE 120Y**

• **DAM OF LOT 18 •**  
**KB L1 DOMINETTE 9133W**



• **DAM OF LOT 19 •**  
**KB L1 DOMINETTE 945W**

**LOT  
19**

BW..... 2.9  
 WW..... 69  
 YW..... 106  
 Milk.... 30  
 M&G... 65  
 REA.... .29  
 Marb... .10  
 CHB.... \$30

Act BW..... 83  
 9-14 Wt.... 855  
 Adj. 205.... 861  
 WDA..... 3.56

**KB L1 DOMINO 121Y**

1/17/11 • #43179319



\* = SOD, CHB, DLF, IEF  
 \*\* = DOD, DLF, HYF, IEF

CL 1 DOMINO 590R CHB, DLF, IEF  
**CL 1 DOMINO 7110T CHB**  
 CL 1 DOMINETTE 332N DOD

HH ADVANCE 5104R CHB, DLF, IEF  
**KB L1 DOMINETTE 945W DLF, HYF, IEF**  
 KB L1 MARKETTE 243 DLF, IEF

CL 1 DOMINO 246M SOD, DLF, IEF  
 CL 1 DOMINETTE 258M  
 CL 1 DOMINO 9126J 1ET \*  
 CL 1 DOMINETTE 875H  
 CL 1 DOMINO 206M  
 HH MISS ADVANCE 153L DOD, DLF, IEF  
 JH MARK 9454 1ET  
 KB L1 DOMINETTE 827

- Great herd bull prospect that has mass, length, correctness and outstanding EPD's. This 7110 son has exceptional depth of side, a straight, strong top and a flawless profile. He also is a long striding bull with big, red testicles and an awesome 121 WR.
- Ranks in the top 1% of the breed for WW, YW and M&G; top 2% for Milk.
- Dam, 945, is just a fabulous 5104 first calf heifer that topped our cow sale going to Vulture Acres of ND for \$19,000. Her dam, 243, is still in the herd with Lot 66 and a daughter has Lot 31.
- Retaining 1/2 semen interest and 1/2 semen sales.

**LOT 19 • KB L1 DOMINO 121Y**

**LOT  
20**

BW..... 4.2  
 WW..... 51  
 YW..... 81  
 Milk..... 27  
 M&G... 52  
 REA.... .34  
 Marb... .02  
 CHB.... \$24

Act BW..... 88  
 9-14 Wt.... 790  
 Adj. 205... 749  
 WDA..... 3.32

**KB L1 DOMINO 126Y**

1/19/11 • #43179303



\* = SOD, CHB, DLF, IEF  
 \*\* = DOD, DLF, HYF, IEF

KB L1 DOMINO 655 ET <i>CHB, DLF, IEF</i>	CL 1 DOMINO 9126J 1ET *
<b>KB L1 DOMINO 842U</b> <i>DLF, IEF</i>	MONTANA MISS 6154 <i>DOD</i>
MONTANA MISS 310 <i>DOD</i>	CL 1 DOMINO 484 <i>SOD, DLF, IEF</i>
	MONTANA MISS 837
JA L1 DOMINO 6002S	GB L1 DOMINO 935C <i>CHB, DLF, IEF</i>
<b>MONTANA MISS 865U</b>	JA L1 DOMINETTE 9203
MONTANA MISS 674	HH ADVANCE 396N <i>CHB, DLF, IEF</i>
	MONTANA MISS 6117

- Top herd bull prospect that is a very correct, thick made 842 son with lots of eye pigment. This bull is smooth up front, very balanced and really steps out. You'll like this classy standout!
- Ranks in the top 5% of the breed for Milk and M&G; in the top 25% or better for WW and YW.
- Dam, 865, is a freckle faced, smooth made, long 6002 daughter that we have always liked. Nelson Polled Herefords of MN purchased her and Raap Herefords of SD bought her only daughter. She has a very balanced set of EPD's with a 106 WR.
- Retaining 1/2 semen interest and 1/2 semen sales.



**LOT 20 • KB L1 DOMINO 126Y**

**LOT  
21**

BW..... 4.7  
 WW..... 51  
 YW..... 86  
 Milk.... 24  
 M&G... 49  
 REA.... .29  
 Marb... .01  
 CHB.... \$23

Act BW..... 91  
 9-14 Wt.... 755  
 Adj. 205... 726  
 WDA..... 3.24

**KB L1 DOMINO 135Y**

1/24/11 • #43179298



\* = SOD, CHB, DLF, IEF  
 \*\* = DOD, DLF, HYF, IEF

KB L1 DOMINO 655 ET <i>CHB, DLF, IEF</i>	CL 1 DOMINO 9126J 1ET *
<b>KB L1 DOMINO 842U</b> <i>DLF, IEF</i>	MONTANA MISS 6154 <i>DOD</i>
MONTANA MISS 310 <i>DOD</i>	CL 1 DOMINO 484 <i>SOD, DLF, IEF</i>
	MONTANA MISS 837
KB L1 DOMINO 311 <i>CHB, DLF, IEF</i>	CL 1 DOMINO 484 <i>SOD, DLF, IEF</i>
<b>MONTANA MISS 862U</b>	MONTANA MISS 1134
MONTANA MISS 510R	CL 1 DOMINO 3138N 1ET <i>CHB</i>
	MONTANA MISS 316

- Here is a very, very long, growthy 842 son with a smooth front end. 135Y has good frame, a straight, strong top and he really takes a long stride.
- Ranks between the top 10% and 20% for WW, YW, Milk and M&G.
- Dam, 862, is a long, deep made 311 daughter that Tonne Cattle Co. of WA purchased. Her dam and grandam sold to Grizzly Ranch of CO in our 2009 cow sale. Super cow family with solid EPD's back 135.



**DAM OF LOT 20 • MONTANA MISS 865U**



**DAM OF LOT 21 • MONTANA MISS 862U**

**LOT  
22**

BW..... 0.6  
 WW..... 56  
 YW..... 83  
 Milk.... 27  
 M&G... 54  
 REA.... .18  
 Marb... .04  
 CHB.... \$27

Act BW..... 68  
 9-14 Wt.... 755  
 Adj. 205... 789  
 WDA..... 3.24

**KB L1 DOMINO 136Y**

1/24/11 • #43179392



\* = SOD, CHB, DLF, IEF  
 \*\* = DOD, DLF, HYF, IEF

CL 1 DOMINO 648S <i>CHB, DLF, IEF</i>	CL 1 DOMINO 461P 1ET <i>CHB, DLF, IEF</i>
<b>CL 1 DOMINO 849U</b> <i>DLF, IEF</i>	CL 1 DOMINETTE 249M
CL 1 DOMINETTE 591R 1ET	CL 1 DOMINO 3162N <i>CHB, DLF, IEF</i>
	CL 1 DOMINETTE 767G <i>DOD</i>
CL 1 DOMINO 0152K <i>DLF, IEF</i>	HH ADVANCE 8093H <i>CHB, DLF, IEF</i>
<b>KB L1 DOMINETTE 9172W</b>	CL 1 DOMINETTE 874H 1ET
KB L1 DOMINETTE 701	CL 1 DOMINO 501 <i>SOD, DLF, HYF, IEF</i>
	MCH MS L1 DM 2171 ET

- A ring eyed, very complete heifer bull prospect that should catch everyone's eye. He is a long sided, correct structured, smooth fronted 849 son with excellent width over his top and quarter. We feel this top yearling possesses a lot of traits the industry demands.
- Ranks in the top 5% of the breed for BW, Milk and M&G; top 10% for WW.
- Dam, 9172, is of old line breeding that has generations of longevity. She is a low birth weight first calf heifer that is very feminine with good milking ability. .111WR.



**LOT 22 • KB L1 DOMINO 136Y**



**LOT  
23**

BW..... 4.7  
 WW..... 50  
 YW..... 79  
 Milk.... 26  
 M&G... 51  
 REA.... .31  
 Marb... .06  
 CHB.... \$24

Act BW..... 87  
 9-14 Wt.... 740  
 Adj. 205.... 714  
 WDA..... 3.19

**KB L1 DOMINO 138Y**

1/25/11 • #43179308



\* = SOD, CHB, DLF, IEF  
 \*\* = DOD, DLF, HYF, IEF

KB L1 DOMINO 655 ET CHB, DLF, IEF	CL 1 DOMINO 9126J 1ET *
<b>KB L1 DOMINO 842U</b> DLF, IEF	MONTANA MISS 6154 DOD
MONTANA MISS 310 DOD	CL 1 DOMINO 484 SOD, DLF, IEF
	MONTANA MISS 837
CL 1 DOMINO 417P CHB, DLF, IEF	CL 1 DOMINO 212M *
<b>MONTANA MISS 887U</b>	CL 1 DOMINETTE 0112K 1ET
MONTANA MISS 295	HH ADVANCE 0072K DLF, IEF
	MONTANA MISS 037 DOD

- A very long spined, big, stout made 842 son that has that herd bull look. He is a well balanced, stylish, smooth fronted bull that has extra depth of side. Look him over closely, he has a fabulous cow family behind him. . .
- Ranks in the top 10% of the breed for Milk and M&G; has strong WW and YW.
- Dam, 887, is a big, long bodied, excellent milking 417 daughter that Bruce Anderson of ND owns. Her first calf was a 6001 son that brought \$5,000 to Ron Dryer of NE and she has a 110 WR.
- Grandam, 295, was a donor cow and has Lot 70 selling.



**LOT 23 • KB L1 DOMINO 138Y**

**LOT  
24**

BW..... -0.9  
 WW..... 60  
 YW..... 86  
 Milk.... 26  
 M&G... 56  
 REA.... .24  
 Marb... .09  
 CHB.... \$28

Act BW..... 60  
 9-14 Wt.... 690  
 Adj. 205.... 720  
 WDA..... 2.97

**KB L1 DOMINO 139Y**

1/25/11 • #43179391



\* = SOD, CHB, DLF, IEF  
 \*\* = DOD, DLF, HYF, IEF

CL 1 DOMINO 648S CHB, DLF, IEF	CL 1 DOMINO 461P 1ET CHB, DLF, IEF
<b>CL 1 DOMINO 849U</b> DLF, IEF	CL 1 DOMINETTE 249M
CL 1 DOMINETTE 591R 1ET	CL 1 DOMINO 3162N CHB, DLF, IEF
	CL 1 DOMINETTE 767G DOD
CL 1 DOMINO 7110T CHB	CL 1 DOMINO 590R CHB, DLF, IEF
<b>MONTANA MISS 9161W</b>	CL 1 DOMINETTE 332N DOD
MONTANA MISS 762T	KB L1 DOMINO 311 CHB, DLF, IEF
	MONTANA MISS 295

- Here is a bona fide heifer bull prospect that is very long bodied. 139Y is a pigmented, red necked, short marked, very smooth fronted 849 son with a lot of spring of rib and a full quarter.
- Very balanced EPDs. Ranks in the top 1% of the breed for BW and the top 10% or better for WW, Milk and M&G.
- Dam, 9161, is a very clean fronted, straight lined, long 7110 first calf heifer backed by a low birth weight, good milking cow family. 9161 sold to Lewis Byers of IA and her dam and grandam have Lots 81 and 70 respectively.



**LOT 24 • KB L1 DOMINO 139Y**

**LOT  
25**

BW..... 1.9  
 WW..... 54  
 YW..... 86  
 Milk.... 27  
 M&G... 54  
 REA.... .11  
 Marb... .16  
 CHB.... \$25

Act BW..... 79  
 9-14 Wt.... 735  
 Adj. 205.... 737  
 WDA..... 3.67

**KB L1 DOMINO 141Y**

1/25/11 • #43179380



\* = SOD, CHB, DLF, IEF  
 \*\* = DOD, DLF, HYF, IEF

CL 1 DOMINO 590R	CL 1 DOMINO 246M SOD, DLF, IEF
<b>CL 1 DOMINO 7110T</b> CHB	CL 1 DOMINETTE 258M
CL 1 DOMINETTE 332N DOD	CL 1 DOMINO 9126J 1ET *
	CL 1 DOMINETTE 875H
JH MARK 9454 1ET	JD BIG ARTHUR 180
<b>MONTANA MISS 8165U</b>	IMR L1 MARKETTE 6062
MONTANA MISS J336 DOD	CL 1 DOMINO 501 SOD, DLF, HYF, IEF
	HH MISS ADVANCE 629U

- This heifer bull prospect is a pigmented, red necked, solid marked 7110 son that is very beefy and thick throughout. He is also a deep sided, wide topped bull with a full quarter and big testicles.
- Very balanced EPD's that rank between top 5% and 16% for all five traits.
- Dam, 8165, was our "2010 Pick of the Herd" heifer that Bruce Anderson of ND chose. She is an own daughter of 336, one of the most profitable cows we ever owned. 8165 is a light colored, deep made cow with a super udder. .104 WR, +27 Milk.



**• GRANDAM OF LOT 25 •  
 MONTANA MISS J336**

**LOT  
26**

BW..... 4.7  
 WW..... 57  
 YW..... 93  
 Milk..... 33  
 M&G... 62  
 REA... .33  
 Marb... .02  
 CHB... \$26

Act BW..... 89  
 9-14 Wt..... 825  
 Adj. 205.... 798  
 WDA..... 3.57

**KB L1 DOMINO 143Y**

1/26/11 • #43179306



\* = SOD, CHB, DLF, IEF  
 \*\* = DOD, DLF, HYF, IEF

KB L1 DOMINO 655 ET CHB, DLF, IEF  
**KB L1 DOMINO 842U DLF, IEF**  
 MONTANA MISS 310 DOD

JA L1 DOMINO 6002S  
**KB L1 DOMINETTE 879U**  
 KB L1 DOMINETTE 647

CL 1 DOMINO 9126J 1ET \*  
 MONTANA MISS 6154 DOD  
 CL 1 DOMINO 484 SOD, DLF, IEF  
 MONTANA MISS 837  
 GB L1 DOMINO 935C CHB, DLF, IEF  
 JA L1 DOMINETTE 9203  
 KB L1 DOMINO 454P DLF, IEF  
 KB L1 DOMINETTE 414P DOD

- A power bull and sure bet herd bull prospect with a fabulous cow family. He is a pigmented, short marked 842 son that has a lot of mass and total dimension. He is also a deep made bull with a big quarter, stands on good bone and really walks out.
- Ranks in the top 1% of the breed for Milk and M&G. He also ranks in the top 6% or better for WW and YW.
- This is one whale of a cow family! Bruce Anderson of ND paid \$17,500 for this great 6002 daughter, Hula Herefords of NE paid \$4,250 for 879's daughter and 647 sold for \$4,750 to Whispering Pines Farm of MN. She has a powerful April bull and another top daughter went to Larry Stangle of NE. 414 was purchased for \$4,200 in our 2009 cow sale by Bruce Anderson and has Lot 68 selling.
- Retaining 1/2 interest. Possession will be worked out with the buyer.



**LOT 26 • KB L1 DOMINO 143Y**



**DAM OF LOT 26 • KB L1 DOMINETTE 879U**

**LOT  
27**

BW..... 3.1  
 WW..... 47  
 YW..... 77  
 Milk.... 27  
 M&G... 51  
 REA... .35  
 Marb... -.01  
 CHB... \$23

Act BW..... 65  
 9-14 Wt..... 710  
 Adj. 205.... 649  
 WDA..... 3.07

**KB L1 DOMINO 145Y**

1/26/11 • #43181191



\* = SOD, CHB, DLF, IEF  
 \*\* = DOD, DLF, HYF, IEF

KB L1 DOMINO 218 CHB, DLF, IEF  
**KB L1 DOMINO 922W**  
 MONTANA MISS 740T

CL 1 DOMINO 3113N DLF, IEF  
**MONTANA MISS 516R**  
 MONTANA MISS 303

HH ADVANCE 7046G DLF, IEF  
 MONTANA MISS 011  
 CL 1 DOMINO 9126J 1ET \*  
 MONTANA MISS 1134  
 CL1 DOMINO 182L 1ET DLF, IEF  
 CL1 DOMINETTE 188L  
 CL 1 DOMINO 484 SOD, DLF, IEF  
 MONTANA MISS 197

- Here is a good performing twin by 922, one of our 2010 high sellers, that was purchased by Behm's of ND. 145Y is a long bodied, deep ribbed bull with excellent volume and muscle expression. He is also correct and moves out with a good stride.
- Balanced EPDs across the board with Milk in the top 5% of the breed.
- Dam, 516, is a big, long made, excellent milking 3113 daughter by a top producing cow, 303. 516's daughters have sold to Rothrock Herefords of CO and Ron Struempfer of NE. Very productive cow family.



**LOT 27 • KB L1 DOMINO 145Y**



**DAM OF LOT 28 • MONTANA MISS 897U**



**DAM OF LOT 30 • MONTANA MISS 8102U**

**LOT  
28**

BW..... 4.7  
 WW..... 51  
 YW..... 83  
 Milk..... 28  
 M&G... 53  
 REA... .42  
 Marb... .00  
 CHB... \$24

Act BW..... 93  
 9-14 Wt.... 740  
 Adj. 205... 716  
 WDA..... 3.20

**KB L1 DOMINO 148Y**

1/26/11 • #43179311



\* = SOD, CHB, DLF, IEF  
 \*\* = DOD, DLF, HYF, IEF

KB L1 DOMINO 655 ET CHB, DLF, IEF  
**KB L1 DOMINO 842U** DLF, IEF  
 MONTANA MISS 310 DOD

CL 1 DOMINO 592R 1ET CHB  
**MONTANA MISS 897U**  
 MONTANA MISS 666

CL 1 DOMINO 9126J 1ET \*  
 MONTANA MISS 6154 DOD  
 CL 1 DOMINO 484 SOD, DLF, IEF  
 MONTANA MISS 837  
 CL 1 DOMINO 9126J 1ET \*  
 CL 1 DOMINETTE 974J  
 KB L1 DOMINO 218 CHB, DLF, IEF  
 MONTANA MISS 498P

- A typical 842 son that is very complete, thick made with a lot of class. He exhibits a wide, thick top on a big quarter and a lot of spring of rib. If you need more muscle and eye appeal in your calves, look this prospect over.
- Ranks in the top 5% of the breed for Milk and M&G. He also ranks in the top 20% for WW and YW.
- Dam, 897, is a moderate framed, feminine 592 daughter that is long and thick. Her first calf by 849 sold to Rapp Herefords of SD. Her dam and grandam were both purchased by Marvin Fisher of IA and are top cows. 897 had a lot of friends at our sale and went for \$4,000 to David Olson of SD.



**LOT 28 • KB L1 DOMINO 148Y**

**LOT  
29**

BW..... 7.2  
 WW..... 54  
 YW..... 80  
 Milk..... 20  
 M&G... 47  
 REA... .14  
 Marb... .13  
 CHB... \$24

Act BW.....102  
 9-14 Wt.... 740  
 Adj. 205... 687  
 WDA..... 3.22

**KB L1 DOMINO 150Y**

1/27/11 • #43179227



\* = SOD, CHB, DLF, IEF  
 \*\* = DOD, DLF, HYF, IEF

HH ADVANCE 5161R CHB, DLF, IEF  
**HH ADVANCE 8203U ET** DLF, IEF  
 HH MISS ADVANCE 752G

KB L1 DOMINO 450P CHB, DLF, IEF  
**KB L1 DOMINETTE 686**  
 KB L1 DOMINETTE 633

HH ADVANCE 396N CHB, DLF, IEF  
 HH MIS ADVANCE 2118M DLF, IEF  
 KB L1 DOMINO 519  
 HH MISS ADVANCE 454D  
 CL 1 DOMINO 9126J 1ET \*  
 MONTANA MISS 037 DOD  
 HH ADVANCE 492D SOD, DLF, IEF  
 SH MISS ADVANCER 721

- This moderate framed, especially long patterned 8203 son is wide based and deep chested. 8203 was Holden's 2009 high seller at \$50,000 for 1/2 interest. 150Y is a pigmented thick made bull with a deep wide quarter and eye appeal.
- Strong growth and maternal EPDs.
- Dam, 686, is a highly pigmented, very long, heavy milking 450 daughter by a foundation and donor cow, 721. She has a 103 WR with sons going to Jerry Knippling and Don Brinkman both of SD.



**LOT 29 • KB L1 DOMINO 150Y**

**LOT  
30**

BW..... 4.1  
 WW..... 52  
 YW..... 86  
 Milk..... 26  
 M&G... 52  
 REA... .43  
 Marb... .04  
 CHB... \$25

Act BW..... 89  
 9-14 Wt.... 755  
 Adj. 205... 735  
 WDA..... 3.30

**KB L1 DOMINO 153Y**

1/28/11 • #43179367



\* = SOD, CHB, DLF, IEF  
 \*\* = DOD, DLF, HYF, IEF

KB L1 DOMINO 655 ET CHB, DLF, IEF  
**KB L1 DOMINO 842U** DLF, IEF  
 MONTANA MISS 310 DOD

CL 1 DOMINO 6105S  
**MONTANA MISS 8102U**  
 MONTANA MISS 549R ET

CL 1 DOMINO 9126J 1ET \*  
 MONTANA MISS 6154 DOD  
 CL 1 DOMINO 484 SOD, DLF, IEF  
 MONTANA MISS 837  
 L1 DOMINO 03396 CHB, DLF, IEF  
 CL 1 DOMINETTE 243M  
 CL 1 DOMINO 9126J 1ET \*  
 MONTANA MISS 1134

- This big, stout 842 son is massive and a performance heavy weight. He is a very correct bull that is really deep flanked and exhibits a lot of natural thickness. He is a well balanced individual that really strides out and has balanced EPD's.
- Growth and Milk EPD are all above the top 20% of the breed.
- Dam, 8102, is a long bodied, high volume, thick 6105 daughter that Ekker Herefords of UT purchased. She has super EPD's and is the kind to raise herd bulls.



**LOT 30 • KB L1 DOMINO 153Y**

**LOT  
31**

BW..... 2.0  
 WW..... 44  
 YW..... 68  
 Milk.... 32  
 M&G... 53  
 REA.... .24  
 Marb... .13  
 CHB.... \$22

Act BW..... 85  
 9-14 Wt.... 755  
 Adj. 205.... 175  
 WDA..... 3.30

**KB L1 DOMINO 154Y**

1/28/11 • #43179268



\* = SOD, CHB, DLF, IEF  
 \*\* = DOD, DLF, HYF, IEF

CL 1 DOMINO 206M  
**HH ADVANCE 6001S**  
 HH MISS ADVANCE 1088L DOD, DLF, IEF

CL 1 DOMINO 592R 1ET CHB  
**KB L1 DOMINETTE 772T**  
 KB L1 MARKETTE 243 DLF, IEF

CL 1 DOMINO 9126J 1ET \*  
 CL 1 DOMINETTE 825H \*\*  
 CL 1 DOMINO 824H SOD, DLF, IEF  
 HH MS ADVANCE 8016H  
 CL 1 DOMINO 9126J 1ET \*  
 CL 1 DOMINETTE 974J  
 JH MARK 9454 1ET  
 KB L1 DOMINETTE 827

- Here is a short marked, very smooth made 6001 son with a lot of balance and eye appeal. He is also a deep sided, big middled bull with excellent thickness from end to end. Look this classy herd bull prospect over.
- Ranks in the top 1% for Milk and 15% for BW.
- Dam, 772, is a power cow that is big, long, deep and an excellent milker purchased by Deer Creek Herefords of MN for \$5,500. She is a maternal half sister to our high seller and her daughter sold for \$4,250 to Carr Herefords of NE. Her dam has Lot 66.
- Retaining 1/4 semen interest.

**LOT 31 • KB L1 DOMINO 154Y****KEN BAKER****• DAM OF LOT 31 •  
KB L1 DOMINETTE 772T****LOT  
32**

BW..... 2.2  
 WW..... 43  
 YW..... 67  
 Milk.... 26  
 M&G... 48  
 REA.... .27  
 Marb... .06  
 CHB.... \$21

Act BW..... 77  
 9-14 Wt.... 695  
 Adj. 205.... 675  
 WDA..... 3.03

**KB L1 DOMINO 155Y**

1/28/11 • #43179278



\* = SOD, CHB, DLF, IEF  
 \*\* = DOD, DLF, HYF, IEF

KB L1 DOMINO 655 ET CHB, DLF, IEF  
**KB L1 DOMINO 842U** DLF, IEF  
 MONTANA MISS 310 DOD

JA L1 DOMINO 6002S  
**MONTANA MISS 816U**  
 MONTANA MISS 657

CL 1 DOMINO 9126J 1ET \*  
 MONTANA MISS 6154 DOD  
 CL 1 DOMINO 484 SOD, DLF, IEF  
 MONTANA MISS 837  
 GB L1 DOMINO 935C CHB, DLF, IEF  
 JA L1 DOMINETTE 9203  
 CL 1 DOMINO 417P CHB, DLF, IEF  
 MONTANA MISS 429P

- A solid marked, stylish, moderate framed 842 son that is very trim up front. He is a long sided, well balanced, correct heifer bull prospect with good volume and a low birth weight cow family backing him.
- Ranks in the top 6% for Milk and top 20% for BW.
- Dam, 816, is a very red, long made, feminine fronted 6002 daughter that has a 102 WR. Gary Friedt of ND purchased 816 and her first daughter went to Dufur Herefords of OK.

**LOT 32 • KB L1 DOMINO 155Y**

**LOT  
33**

BW..... 0.6  
 WW..... 44  
 YW..... 62  
 Milk.... 19  
 M&G... 41  
 REA.... -12  
 Marb... .14  
 CHB.... \$20  
 Act BW..... 70  
 9-14 Wt.... 670  
 Adj. 205.... 619  
 WDA..... 2.94

**KB L1 DOMINO 158Y**

1/29/11 • #43179337



\* = SOD, CHB, DLF, IEF  
 \*\* = DOD, DLF, HYF, IEF

CL 1 DOMINO 477P DOD, DLF, IEF	CL 1 DOMINO 9126J 1ET *
<b>CL 1 DOMINO 795T 1ET</b> CHB	CL 1 DOMINETTE 839H DOD, DLF, IEF
CL 1 DOMINETTE 258M	HH ADVANCE 8093H CHB, DLF, IEF
	CL 1 DOMINETTE 0113K 1ET
HH ADVANCE 0072K DLF, IEF	CL 1 DOMINO 7120G ET
<b>KB L1 DOMINETTE 2109</b>	HH MS ADVANCE 8084H
KB L1 DOMINETTE 069	HH ADVANCE 7046G DLF, IEF
	KB L1 DOMINETTE 7142

- Here is a highly pigmented, long patterned, very complete 795 son that has a low birth. He is a smooth fronted, level topped bull with good thickness. A lot of style, balance and eye appeal in this top prospect.
- Ranks in the top 5% of the breed for BW and top 35% for Milk.
- Dam, 2109, is a moderate framed, long bodied, very feminine 0072 daughter that always produces a low birth weight calf.



• **DAM OF LOT 34** •  
**MONTANA MISS 728T**

**LOT  
34**

BW..... 1.5  
 WW..... 47  
 YW..... 83  
 Milk.... 29  
 M&G... 53  
 REA.... .25  
 Marb... .06  
 CHB.... \$23  
 Act BW..... 83  
 9-14 Wt.... 755  
 Adj. 205.... 719  
 WDA..... 3.33

**KB L1 DOMINO 165Y**

1/30/11 • #43179252



\* = SOD, CHB, DLF, IEF  
 \*\* = DOD, DLF, HYF, IEF

CL 1 DOMINO 637S 1ET CHB	L1 DOMINO 03396 CHB, DLF, IEF
<b>CL 1 DOMINO 993W</b> DLF, HYF, IEF	CL 1 DOMINETTE 118L
CL 1 DOMINETTE 5142R DOD	CL 1 DOMINO 1172L
	CL 1 DOMINETE 810H
CL 1 DOMINO 9126J 1ET *	HH ADVANCE 767G 1ET *
<b>MONTANA MISS 728T</b>	CL 1 DOMINETTE 490 DOD
MONTANA MISS 756	JA L1 DOMINO 503 2ET SOD
	MONTANA MISS 503

- This highly pigmented, solid marked 993 son has a lot of eye appeal. 165 is a very thick made, high volume herd bull prospect that has length, depth and very strong EPD's.
- He has EPD's 20% or better for BW, YW, Milk and M&G.
- Dam, 728, was one of our favorite cows because of her frame, length, broodiness and overall conformation. She has a 105 WR, solid EPD's and a great cow family backing her. 739 sold to Bill Goehring of IA and a super daughter went to Climbin' Tree of CO.
- Retaining a 1/4 semen interest and 1/4 semen sales.



**LOT 34 • KB L1 DOMINO 165Y**

**LOT  
35**

BW..... 2.8  
 WW..... 56  
 YW..... 89  
 Milk.... 27  
 M&G... 54  
 REA.... .16  
 Marb... .17  
 CHB.... \$26  
 Act BW..... 78  
 9-14 Wt.... 845  
 Adj. 205.... 803  
 WDA..... 3.37

**KB L1 DOMINO 166Y**

1/31/11 • #43179323



\* = SOD, CHB, DLF, IEF  
 \*\* = DOD, DLF, HYF, IEF

CL 1 DOMINO 590R CHB, DLF, IEF	CL 1 DOMINO 246M SOD, DLF, IEF
<b>CL 1 DOMINO 7110T</b> CHB	CL 1 DOMINETTE 258M
CL 1 DOMINETTE 332N DOD	CL 1 DOMINO 9126J 1ET *
	CL 1 DOMINETTE 875H
CL 1 DOMINO 592R 1ET CHB	CL 1 DOMINO 9126J 1ET *
<b>MONTANA MISS 953W</b>	CL 1 DOMINETTE 947J
MONTANA MISS 210	SNS 47G SILVER DANDY 11J
	MONTANA MISS 768 DOD

- A very correct, well balanced 7110 son that is smooth up front with excellent EPD's. 166Y has a wide thick top with good expression of muscle in his quarter.
- Ranks in the top 5% of the breed for WW, Milk and M&G; top 30% for BW.
- Dam, 953, is a long bodied, deep made 592 first calf heifer that has a super udder. Her dam, 210, is a very long, super feminine fronted cow with a strong maternal background and has Lot 2.



• **DAM OF LOT 35** •  
**MONTANA MISS 953W**

**LOT  
36**

BW..... 2.1  
 WW..... 41  
 YW..... 69  
 Milk.... 32  
 M&G... 52  
 REA.... .30  
 Marb... .03  
 CHB.... \$21

Act BW..... 83  
 9-14 Wt.... 710  
 Adj. 205.... 659  
 WDA..... 3.14

**KB L1 DOMINO 169Y**

1/31/11 • #43181192



\* = SOD, CHB, DLF, IEF  
 \*\* = DOD, DLF, HYF, IEF

KB L1 DOMINO 218 CHB, DLF, IEF  
**KB L1 DOMINO 922W**  
 MONTANA MISS 740T  
 CL 1 DOMINO 3113N DLF, IEF  
**MONTANA MISS 559R**  
 MONTANA MISS 237  
 HH ADVANCE 7046G DLF, IEF  
 MONTANA MISS 011  
 CL 1 DOMINO 9126J 1ET \*  
 MONTANA MISS 1134  
 CL 1 DOMINO 182L 1ET DLF, IEF  
 CL 1 DOMINETTE 188L  
 JH MARK 9454 1ET  
 DBH L1 MISS DOMINO 981

- A pigmented, red necked 922 son we really like. He is an extremely long made, low birth weight bull with very strong EPD's. 169Y is a smooth fronted, stylish individual with a lot of eye appeal.
- Ranks in the top 5% for Milk and M&G; top 20% for BW.
- Dam, 559, is a big, very long made, short marked 3113 daughter with a +33 Milk and nice udder. Daughters sold to Knippling Herefords of SD and Sandrock Herefords of WI. A top son is working for Behm Herefords of ND.

**LOT 36 • KB L1 DOMINO 169Y****LOT  
37**

BW..... 4.7  
 WW..... 55  
 YW..... 87  
 Milk.... 31  
 M&G... 58  
 REA.... .30  
 Marb... .02  
 CHB.... \$26

Act BW..... 93  
 9-14 Wt.... 785  
 Adj. 205.... 771  
 WDA..... 3.50

**KB L1 DOMINO 171Y**

2/1/11 • #43179280



\* = SOD, CHB, DLF, IEF  
 \*\* = DOD, DLF, HYF, IEF

KB L1 DOMINO 655 ET CHB, DLF, IEF  
**KB L1 DOMINO 842U** DLF, IEF  
 MONTANA MISS 310 DOD  
 JA L1 DOMINO 6002S  
**KB L1 DOMINETTE 824U**  
 KB L1 DOMINETTE 671  
 CL 1 DOMINO 9126J 1ET \*  
 MONTANA MISS 6154 DOD  
 CL 1 DOMINO 484 SOD, DLF, IEF  
 MONTANA MISS 837  
 GB L1 DOMINO 935C CHB, DLF, IEF  
 JA L1 DOMINETTE 9203  
 KB L1 DOMINO 454P DLF, IEF  
 KB L1 DOMINETTE 448P DLF, IEF

- This pigmented, big framed 842 son is the total package. He is a massive, high volume bull with a lot of spring of rib. 171Y is a very thick made prospect with a big top and strong maternal pedigree.
- Ranks in the top 1% of the breed for Milk and M&G; top 15% or better for WW and YW.
- Dam, 824, is a pigmented, very feminine, red to the ground 6002 daughter that Dufur Herefords of OK purchased for \$5,000. Her first son sold last year for \$6,000 to Dale Neu of SD and her dam, 671, is a top cow with Lot 76. 824 has strong EPD's with a +34 Milk, +59 M&G and 107 WR.

**LOT 37 • KB L1 DOMINO 171Y****LOT  
38**

BW..... 3.5  
 WW..... 51  
 YW..... 78  
 Milk.... 29  
 M&G... 54  
 REA.... .47  
 Marb... -.01  
 CHB.... \$22

Act BW..... 88  
 9-14 Wt.... 740  
 Adj. 205.... 689  
 WDA..... 3.29

**KB L1 DOMINO 172Y**

2/1/11 • #43179351



\* = SOD, CHB, DLF, IEF  
 \*\* = DOD, DLF, HYF, IEF

CL 1 DOMINO 637S 1ET CHB  
**CL 1 DOMINO 955W** DLF, HYF, IEF  
 CL 1 DOMINETTE 5152R  
 L1 DOMINO 03396 CHB, DLF, IEF  
 CL 1 DOMINETTE 118L  
 CL 1 DOMINO 3162N CHB, DLF, IEF  
 CL 1 DOMINETE 392N  
 CL 1 DOMINO 986J SOD, DLF, IEF  
 CHURCHILL LADY 792 DOD  
 H5 9012Y ADVANCE 501 SOD, CHB  
 CHURCHILL LADY 918 DOD  
 CHURCHILL MVP 188 DLF, HYF, IEF  
**CHURCHILL LADY 5143R ET**  
 CHURCHILL LADY 103

- Here is a very thick made son of Cooper's 2010 high seller, 955. 172Y is a massive, high volume, moderate framed prospect that has a big butt. If you need more mass and muscle look this correct yearling over.
- Ranks in the top 5% for Milk and M&G, plus he has strong growth EPD's and breed average for BW.
- Dam, 5143, is a moderate framed, super wide based cow that was purchased in Churchill's 2010 sale. She has a +31 Milk and a 102 WR in addition to being a massive, very thick, deep MVP daughter.

**DAM OF LOT 37 • KB L1 DOMINETTE 824U****LOT 38 • KB L1 DOMINO 172Y**

**LOT  
39**

BW..... 5.6  
 WW..... 75  
 YW..... 118  
 Milk..... 28  
 M&G... 66  
 REA... .29  
 Marb... .04  
 CHB... \$34

Act BW..... 93  
 9-14 Wt..... 780  
 Adj. 205.... 820  
 WDA..... 3.47

**KB L1 DOMINO 175Y**

2/1/11 • #43179381



\* = SOD, CHB, DLF, IEF  
 \*\* = DOD, DLF, HYF, IEF

CL 1 DOMINO 648S CHB, DLF, IEF	CL 1 DOMINO 461P 1ET CHB, DLF, IEF
<b>CL 1 DOMINO 849U DLF, IEF</b>	CL 1 DOMINETTE 249M
CL 1 DOMINETTE 591R 1ET	CL 1 DOMINO 3162N CHB, DLF, IEF
	CL 1 DOMINETTE 767G DOD
CL 1 DOMINO 7110T CHB	CL 1 DOMINO 590R CHB, DLF, IEF
<b>KB L1 DOMINETTE 9103W</b>	CL 1 DOMINETTE 332N DOD
KB L1 DOMINETTE 7116T	L1 DOMINO 02336
	KB AMY 1158 DOD

- This extremely long made, growthy 849 son has powerful EPD's. He is solid marked, a very trim fronted herd bull prospect with a lot of width and thickness over his top and quarter. He is a top gaining bull with a 118 WR.
- Ranks in the top 1% of the breed for WW, YW, and M&G; in the top 5% in Milk.
- Dam, 9103, is a feminine made, very long, excellent milking 7110 daughter with breed leading EPD's. Stuber Herefords of ND purchased this top first calf heifer and Sandrock Herefords of WI bought her dam, 7116. Her bull sells as Lot 72.
- Retaining 1/4 semen interest and 1/4 semen sales.



**LOT 39 • KB L1 DOMINO 175Y**

**LOT  
40**

BW..... -1.4  
 WW..... 39  
 YW..... 60  
 Milk.... 25  
 M&G... 45  
 REA... .21  
 Marb... .13  
 CHB... \$19

Act BW..... 68  
 9-14 Wt..... 770  
 Adj. 205.... 725  
 WDA..... 3.42

**KB L1 DOMINO 177Y**

2/1/11 • #43179219



\* = SOD, CHB, DLF, IEF  
 \*\* = DOD, DLF, HYF, IEF

L1 DOMINO 03396 CHB, DLF, IEF	L1 DOMINO 00552
<b>CL 1 DOMINO 7113T</b>	L1 DOMINETTE 96893 DOD
CL 1 DOMINETTE 166L DOD	HH ADVANCE 9070J SOD
	CL 1 DOMINETTE 876H 1ET
CL 1 DOMINO 9126J 1ET *	HH ADVANCE 767G 1ET *
<b>KB L1 DOMINETTE 656</b>	CL 1 DOMINETTE 490 DOD
KB L1 DOMINETTE 353 ET	/S MISTER MOM 7745 SOD, DLF, IEF
	SH MISS ADVANCER 721

- A pigmented, solid marked, yellow haired, moderate framed 7113 son that is very wide made. 177Y travels very well for being so massive and thick. If you need to lower birth weights and add body mass, look him over!
- Ranks in the top 1% for BW and top 10% for Milk.
- Dam, 656, is a thick made, very feminine 9126 daughter with a beautiful udder. Her first calf was a heifer that sold privately to Rell Ranch of UT and her son went to Jerry Nelson of SD last year. Her dam, 353, has a thick 862 son selling as Lot 46.



**LOT 40 • KB L1 DOMINO 177Y**

**LOT  
41**

BW..... 6.6  
 WW..... 69  
 YW..... 100  
 Milk.... 32  
 M&G... 66  
 REA... .22  
 Marb... .06  
 CHB... \$31

Act BW..... 95  
 9-14 Wt..... 690  
 Adj. 205.... 723  
 WDA..... 3.08

**KB L1 DOMINO 180Y**

2/2/11 • #43179312



\* = SOD, CHB, DLF, IEF  
 \*\* = DOD, DLF, HYF, IEF

CL 1 DOMINO 648S CHB, DLF, IEF	CL 1 DOMINO 461P 1ET CHB, DLF, IEF
<b>CL 1 DOMINO 849U DLF, IEF</b>	CL 1 DOMINETTE 249M
CL 1 DOMINETTE 591R 1ET	CL 1 DOMINO 3162N CHB, DLF, IEF
	CL 1 DOMINETTE 767G DOD
CL 1 DOMINO 795T 1ET CHB	CL 1 DOMINO 477P CHB, DLF, IEF
<b>KB L1 DOMINETTE 908W</b>	CL 1 DOMINETTE 258M
KB L1 DOMINETTE 744T	KB L1 DOMINO 521R CHB, DLF, HYF, IEF
	KB L1 DOMINETTE 514R

- A very growthy, trim fronted 849 son that is very sharp and smooth fronted. He is one of the longest bulls in the sale with good width over his top and spring of rib. He has breed leading growth and Milk EPD's to move a herd forward.
- Ranks in the top 1% for WW, YW, Milk and M&G.
- Dam, 908, has a pedigree full of top performers and milk producers. She is a feminine, smooth, high volume 795 first calf heifer that Climbin' Tree Ranch of CO purchased. Her dam, 744, has a 107 WR and a son sells as Lot 53.



**DAM OF LOT 40 • KB L1 DOMINETTE 656**



**LOT 41 • KB L1 DOMINO 180Y**

**LOT  
42**

BW..... 3.0  
 WW..... 48  
 YW..... 76  
 Milk.... 24  
 M&G... 47  
 REA.... .37  
 Marb... -.09  
 CHB.... \$21

Act BW..... 87  
 9-14 Wt.... 720  
 Adj. 205... 670  
 WDA..... 3.23

**KB L1 DOMINO 181Y**

2/3/11 • #43179175



\* = SOD, CHB, DLF, IEF  
 \*\* = DOD, DLF, HYF, IEF

HH ADVANCE 5212R CHB, DLF, IEF	CL 1 DOMINO 206M
<b>HH ADVANCE 8086U</b> DLF, IEF	HH MISS ADVANCE 1028L DLF, IEF
HH MISS ADVANCE 5143R DLF, IEF	HH ADVANCE 396N CHB, DLF, IEF
	HH MISS ADVANCE 2129M DOD, DLF, IEF
HH ADVANCE 0072K DLF, IEF	CL 1 DOMINO 7120G ET
<b>MONTANA MISS 497P</b>	HH MS ADVANCE 8084H
MONTANA MISS 247	SNS 47GSILVER DANDY 11J
	MONTANA MISS 967

- Big bodied, high volume bull with a lot of total mass. He is a really long bodied, smooth made 8086 son with a thick, wide loin and a deep, thick quarter.
- Ranks in the top 10% for Milk and top 30% for WW.
- Dam, 497, is a very long, angular 0072 daughter with good depth and thickness. This beautiful uddered cow was purchased by Marvin Fisher of IA. Daughters have gone to Climbin' Tree Ranch of CO and Zens Herefords of SD. Sons are working for Marty Ranch in SD and Ron Struempfer in NE.

**LOT 42 • KB L1 DOMINO 181Y****• DAM OF LOT 42 •  
MONTANA MISS 497P****LOT  
43**

BW..... 2.6  
 WW..... 43  
 YW..... 71  
 Milk.... 18  
 M&G... 40  
 REA.... .14  
 Marb... .23  
 CHB.... \$23

Act BW..... 86  
 9-14 Wt.... 680  
 Adj. 205... 644  
 WDA..... 3.05

**KB L1 DOMINO 183Y**

2/3/11 • #43179207



\* = SOD, CHB, DLF, IEF  
 \*\* = DOD, DLF, HYF, IEF

L1 DOMINO 03396 CHB, DLF, IEF	L1 DOMINO 00552
<b>CL 1 DOMINO 7113T</b>	L1 DOMINETTE 96893 DOD
CL1 DOMINETTE 166L DOD	HH ADVANCE 9070J SOD
	CL 1 DOMINETTE 876H 1ET
CL 1 DOMINO 417P CHB, DLF, IEF	CL 1 DOMINO 212M *
<b>KB L1 DOMINETTE 640</b>	CL 1 DOMINETTE 0112K 1ET
KB L1 DOMINETE 334	CL 1 DOMINO 484 SOD, DLF, IEF
	KB L1 DOMINETTE 9100

- A very thick bodied 7113 son that is solid marked and moderate framed. 183Y is a stylish, well balanced, correct bull that is deep flanked and well muscled.
- Very balanced EPD's across the board.
- Dam, 640, is a framey, long bodied 417 daughter that has a lot of volume and depth. She sold to John Molstad of ND and her dam, 334, is owned by Pete Loehr of IL.

**LOT  
44**

BW..... 1.7  
 WW..... 43  
 YW..... 69  
 Milk.... 21  
 M&G... 42  
 REA.... .17  
 Marb... .07  
 CHB.... \$20

Act BW..... 83  
 9-14 Wt.... 770  
 Adj. 205... 724  
 WDA..... 3.45

**KB L1 DOMINO 184Y**

2/3/11 • #43178893



\* = SOD, CHB, DLF, IEF  
 \*\* = DOD, DLF, HYF, IEF

L1 DOMINO 03396 CHB, DLF, IEF	L1 DOMINO 00552
<b>CL 1 DOMINO 7113T</b>	L1 DOMINETTE 96893 DOD
CL1 DOMINETTE 166L DOD	HH ADVANCE 9070J SOD
	CL 1 DOMINETTE 876H 1ET
JNHR DIAMOND ET 414B SOD	BEL L DIAMOND 12Z ET
<b>MONTANA MISS 235</b>	CH AP AMY 41Y
MONTANA MISS 909	HH ADVANCE 7046G DLF, IEF
	MONTANA MISS J336 DOD

- A very deep ribbed, wide chested, massive 7113 son by a great 414 daughter. 184 is a well balanced, very thick prospect that has a wide top, thick, deep quarter and a low birth weight.
- Ranks in the top 15% of breed for BW and top 25% for Milk.
- Dam, 235, is a very feminine, excellent milking nine year old 414 daughter that always brings in a top calf. Her daughters have went to Rothrock Herefords of CO, Bruce Anderson of ND and Knippling Herefords of SD. A son is a top sire for Powell Herefords in TX.

**LOT 44 • KB L1 DOMINO 184Y****LOT  
45**

BW..... 1.4  
 WW..... 45  
 YW..... 68  
 Milk.... 26  
 M&G... 48  
 REA.... .27  
 Marb... .09  
 CHB.... \$18

Act BW..... 83  
 9-14 Wt.... 720  
 Adj. 205... 700  
 WDA..... 3.27

**KB L1 DOMINO 190Y**

2/6/11 • #43179269



\* = SOD, CHB, DLF, IEF  
 \*\* = DOD, DLF, HYF, IEF

L1 DOMINO 03571 CHB, DLF, IEF	L1 DOMINO 01384
<b>HH ADVANCE 9027W</b> DLF, HYF, IEF	L1 DOMINETTE 00532
HH MISS ADVANCE 6074S DLF, HYF, IEF	CL 1 DOMINO 2136M DLF, IEF
	HH MISS ADVANCE 1013L
HH ADVANCE 396N CHB, DLF, IEF	CL 1 DOMINO 824H SOD, DLF, IEF
<b>KB L1 DOMINETTE 773T</b>	HH MS ADVANCE 8037H
KB MISS MARK 873 DOD	JD BIG ARTHUR 180
	KB DOMINETTE 384 1ET

- Here is a low birth weight, very smooth made herd bull prospect that has a lot of guts. 190Y has length, trimness and balance, along with being an extra thick 9027 son.
- Ranks in the top 10% of breed for BW and Milk.
- Dam, 773, is a feminine fronted, deep made 396 daughter with a low 98.7 BW ratio and a 104 WR. This thick made, heavy milking cow was purchased by Jack Chastain of TX. Her first two sons went to Mick Sams and Pat Flaherty.

**LOT 45 • KB L1 DOMINO 190Y**



**LOT  
46**

BW..... 2.9  
 WW..... 45  
 YW..... 72  
 Milk..... 23  
 M&G... 45  
 REA... .33  
 Marb... .17  
 CHB... \$24

Act BW..... 86  
 9-14 Wt..... 720  
 Adj. 205... 677  
 WDA..... 3.27

**KB L1 DOMINO 191Y**

2/6/11 • #43179156



\* = SOD, CHB, DLF, IEF  
 \*\* = DOD, DLF, HYF, IEF

CL 1 DOMINO 637S 1ET CHB  
**CL 1 DOMINO 862U** DLF, IEF  
 CL 1 DOMINETTE 5131R  
 /S MISTER MOM 7745 SOD, DLF, IEF  
**KB L1 DOMINETTE 353 ET**  
 SH MISS ADVANCER 721  
 L1 DOMINO 03396 CHB, DLF, IEF  
 CL 1 DOMINETTE 118L  
 HH ADVANCE 3113N 1ET CHB, SOD  
 CL 1 DOMINETTE 291M DOD  
 MISTER MOM 221  
 /S MS PEER PLAN 526E  
 SH ADVANCER 503  
 L1 LASS 2L91

- This yellow haired, thick bodied 862 son is moderate framed. 862 is a Cooper bull we used AI and sired many of their 2011 top sellers. 191Y is a deep sided, high volume, thick topped bull with good bone and big testicles.
- Strong balanced EPD's with Milk in the top 15%.
- Dam, 353, is a yellow, big bodied Mister Mom daughter by a great foundation cow, 721. She has a 101 WR and sons have averaged \$4,000 going to Uttecht Farms of SD, Michael Gilbert of SD and Bates Creek Ranch of WY. Daughters have sold to Clayton Sanders and Don Sonsalla of ND, and another has Lot 40.



**LOT 46 • KB L1 DOMINO 191Y**

**LOT  
47**

BW..... 2.9  
 WW..... 58  
 YW..... 93  
 Milk..... 26  
 M&G... 55  
 REA... .18  
 Marb... .17  
 CHB... \$27

Act BW..... 65  
 9-14 Wt..... 570  
 Adj. 205... 617  
 WDA..... 2.62

**KB L1 DOMINO 198Y**

2/8/11 • #43179390



\* = SOD, CHB, DLF, IEF  
 \*\* = DOD, DLF, HYF, IEF

CL 1 DOMINO 590R CHB, DLF, IEF  
**CL 1 DOMINO 7110T** CHB  
 CL 1 DOMINETTE 332N DOD  
 CL 1 DOMINO 0152K DLF, IEF  
**MONTANA MISS 9160W**  
 MONTANA MISS 5107R  
 CL 1 DOMINO 246M SOD, DLF, IEF  
 CL 1 DOMINETTE 258M  
 CL 1 DOMINO 9126J 1ET \*  
 CL 1 DOMINETTE 875H  
 HH ADVANCE 8093H CHB, DLF, IEF  
 CL 1 DOMINETTE 874H 1ET  
 KB L1 DOMINO 218 CHB, DLF, IEF  
 MONTANA MISS 1134

- This yellow haired, moderate framed 7110 TWIN would make a top heifer bull prospect. He is very smooth through his shoulder and he really strides out. 198Y also has a strong top and is deep through his side and quarter.
- Ranks in the top 10% of the breed or better for WW, YW, Milk, M&G; top 35% for BW.
- Dam, 9160, is a deep ribbed, thick made, pigmented 0152 first calf heifer that Bruce Anderson purchased. Her dam, 5107, is a very long, excellent uddered 218 daughter by a great 1134 donor cow. Tremendous cows on both sides of this pedigree!



**• DAM OF LOT 48 •  
KB DOMINETTE 421P**

**LOT  
48**

BW..... 4.6  
 WW..... 53  
 YW..... 86  
 Milk..... 29  
 M&G... 55  
 REA... .16  
 Marb... .11  
 CHB... \$22

Act BW..... 98  
 9-14 Wt..... 760  
 Adj. 205... 718  
 WDA..... 3.49

**KB L1 DOMINO 199Y**

2/8/11 • #43179166



\* = SOD, CHB, DLF, IEF  
 \*\* = DOD, DLF, HYF, IEF

L1 DOMINO 03571 CHB, DLF, IEF  
**HH ADVANCE 9027W** DLF, HYF, IEF  
 HH MISS ADVANCE 6074S DLF, HYF, IEF  
 KB ROBIN DOMINO 266  
**KB DOMINETTE 421P**  
 KB AMY 1158 DOD  
 L1 DOMINO 01384  
 L1 DOMINETTE 00532  
 CL 1 DOMINO 2136M DLF, IEF  
 HH MISS ADVANCE 1013L  
 HR ROBIN HOOD 52F SOD, DLF, IEF  
 KB L1 DOMINETTE 984 1ET  
 JNHR DIAMOND ET 414B SOD  
 KB L1 DOMINETTE 7130

- Tremendous herd bull prospect that has been an eye catcher from birth. This highly pigmented, short marked 9027 son has the frame, length, depth and smoothness to be one of the best. This bull is bred to be a great producer!
- Ranks in the top 5% for Milk and M&G; top 15% for WW and YW.
- Dam, 421, is a power cow that has really produced. She is a big, very long made, super milker with a 109 WR and +34 Milk. She sold to Andrew Paquette of IL and daughters went to Roe Herefords of AL, Dennis Quivey of SD, Mark Giedd of ND and her only other son sold for \$6,750 to Uttecht Farms of SD.



**LOT 48 • KB L1 DOMINO 199Y**

**LOT  
49**

BW..... 7.5  
 WW..... 60  
 YW..... 101  
 Milk.... 32  
 M&G... 62  
 REA.... .26  
 Marb... .06  
 CHB.... \$28

Act BW.....104  
 9-14 Wt..... 775  
 Adj. 205.... 745  
 WDA.....3.56

**KB L1 DOMINO 1100Y**

2/8/11 • #43179228



\* = SOD, CHB, DLF, IEF  
 \*\* = DOD, DLF, HYF, IEF

KB L1 DOMINO 521R CHB, DLF, HYF, IEF  
**KB L1 DOMINO 844U**  
 KB DOMINETTE 353N ET DLF, HYF, IEF

GB L1 DOMINO 175E CHB, DLF, HYF, IEF  
**MONTANA MISS 698 ET**  
 MONTANA MISS 756

CL 1 DOMINO 3138N 1ET CHB  
 MONTANA MISS 310 DOD  
 JD BIG ARTHUR 180  
 CL 1 DOMINETTE 7188G  
 HH ADVANCE 767G 1ET \*  
 GB L1 DOM PRGS 3134 DOD  
 JA L1 DOMINO 503 2ET SOD  
 MONTANA MISS 503

- Here is a massive, very deep made, pounds heavy 844 son that has a lot of performance! 1100Y has a loose frame, is extra long and has the thickness to give you those added pounds.
- Tremendous growth and Milk EPD's that rank in the top 2% of the breed or better.
- Dam, 698, is a broody, long, highly pigmented 175 daughter with a 106 WR, +82 YW and +30 Milk. Her only daughter sold for \$3,500 to Knipling Herefords of SD. Her dam 756 was a great donor cow whose daughters have Lots 15, 34 and 54.

**LOT 49 • KB L1 DOMINO 1100Y****LOT  
50**

BW..... 0.5  
 WW..... 43  
 YW..... 66  
 Milk.... 27  
 M&G... 48  
 REA.... .36  
 Marb... -.03  
 CHB.... \$20

Act BW..... 74  
 9-14 Wt..... 705  
 Adj. 205.... 669  
 WDA.....3.25

**KB L1 DOMINO 1104Y**

2/9/11 • #43179069



\* = SOD, CHB, DLF, IEF  
 \*\* = DOD, DLF, HYF, IEF

HH ADVANCE 5212R CHB, DLF, IEF  
**HH ADVANCE 8086U** DLF, IEF  
 HH MISS ADVANCE 5143R DLF, IEF

HH ADVANCE 0072K DLF, IEF  
**JBN 0072 DOMINETTE 305**  
 JBN 3194 DOMINETTE 15 DLF, HYF, IEF

CL 1 DOMINO 206M  
 HH MISS ADVANCE 1028L DLF, IEF  
 HH ADVANCE 396N CHB, DLF, IEF  
 HH MISS ADVANCE 2129M DOD, DLF, IEF  
 CL 1 DOMINO 7120G ET  
 HH MS ADVANCE 8084H  
 MF DOM 359 0587 3194  
 WT MISS SHOTGUN 5253

- This low birth weight 8086 son has a lot of body volume with a strong, wide top. He is a red necked, solid marked heifer bull prospect that is smooth shouldered and has style and eye appeal.
- Ranks in the top 5% of the breed for BW and Milk.
- Dam, 305, is a short marked, long bodied 0072 daughter with a low birth weight ratio of 96 and a 104 WR. JBN Livestock has two daughters in their herd and sons have gone to Manderly Farms of TN and Don Brinkman of SD.

**LOT 50 • KB L1 DOMINO 1104Y****LOT  
51**

BW..... 3.0  
 WW..... 62  
 YW..... 102  
 Milk.... 40  
 M&G... 71  
 REA.... .45  
 Marb... .00  
 CHB.... \$29

Act BW..... 84  
 9-14 Wt..... 775  
 Adj. 205.... 762  
 WDA.....3.59

**KB L1 DOMINO 1107Y**

2/10/11 • #43179265



\* = SOD, CHB, DLF, IEF  
 \*\* = DOD, DLF, HYF, IEF

CL 1 DOMINO 206M  
**HH ADVANCE 5104R** CHB, DLF, IEF  
 HH MISS ADVANCE 153L DOD, DLF, IEF

KB L1 DOMINO 521R CHB, DLF, HYF, IEF  
**MONTANA MISS 760T** DLF, HYF, IEF  
 MONTANA MISS 524R DLF, HYF, IEF

CL 1 DOMINO 9126J 1ET \*  
 CL 1 DOMINETTE 825H \*\*  
 CL 1 DOMINO 986J SOD, DLF, IEF  
 HH MISS ADVANCE 912J  
 CL 1 DOMINO 3138N 1ET CHB  
 MONTANA MISS 310 DOD  
 GB L1 DOMINO 175E CHB, DLF, HYF, IEF  
 MONTANA MISS 1164

- Definitely a true herd bull prospect that could help a lot of herds. He is a pigmented, red marked 5104 son that has frame, length, depth, thickness and powerful EPD's. We feel this bull has tremendous genetic potential.
- One of the best M&G EPD's in the entire breed, WW, YW and Milk all rank in the top 2% of the breed and BW in the top 35%.
- Dam, 760, is an elite producer we were proud to raise. She is a big, long, high volume 521 daughter with a 110 WR, 111 YR, 96 YW and a +37 Milk. Vulture Acres purchased this great cow for \$6,000 and her first son sold for \$9,500 to Larry Stangle of NE.
- Retaining 1/4 semen interest and 1/4 semen sales.

**DAM OF LOT 50 • JBN 0072 DOMINETTE 305****LOT 51 • KB L1 DOMINO 1107Y**

**LOT  
52**

BW..... 2.9  
 WW..... 48  
 YW..... 80  
 Milk..... 34  
 M&G... 58  
 REA.... .42  
 Marb... .07  
 CHB.... \$24

Act BW..... 87  
 9-14 Wt.... 720  
 Adj. 205.... 710  
 WDA..... 3.25

**KB L1 DOMINO 1109Y**

2/11/11 • #43179267



\* = SOD, CHB, DLF, IEF  
 \*\* = DOD, DLF, HYF, IEF

CL 1 DOMINO 9126J 1ET \*  
**CL 1 DOMINO 592R 1ET CHB**  
 CL 1 DOMINETTE 974J

HH ADVANCE 396N CHB, DLF, IEF  
**KB L1 DOMINETTE 765T ET**  
 KB MISS MARK 1109 DOD

HH ADVANCE 767G 1ET \*  
 CL 1 DOMINETTE 490 DOD  
 HH ADVANCE 629F CHB  
 CL 1 DOMINETTE 543E  
 CL 1 DOMINO 824H SOD, DLF, IEF  
 HH MS ADVANCE 8037H  
 ORE 4411 MRK 7078 1ET  
 KB L1 DOMINETTE 736

- A pigmented, red necked, very correct herd bull prospect that has a lot of outcome. 1109Y has a very maternal pedigree with very strong EPD's. This long made 592 son has extra thickness and width.
- Ranks in the top 1% of breed for Milk and M&G; top 32% for BW, WW and YW.
- Dam, 765, is a very feminine fronted, long bodied, very good milking 396 daughter by a super Mark cow that raised many high sellers. 765 has a 105 WR with +29 Milk. A daughter sold to Lewis Byers of IA.

**LOT 52 • KB L1 DOMINO 1109Y****LOT  
53**

BW..... 1.4  
 WW..... 40  
 YW..... 64  
 Milk..... 32  
 M&G... 52  
 REA.... .09  
 Marb... .16  
 CHB.... \$19

Act BW..... 77  
 9-14 Wt.... 680  
 Adj. 205.... 671  
 WDA..... 3.16

**KB L1 DOMINO 1111Y**

2/11/11 • #43179261



\* = SOD, CHB, DLF, IEF  
 \*\* = DOD, DLF, HYF, IEF

HH ADVANCE 5061R ET CHB, DLF, IEF  
**HH ADVANCE 9016W ET DLF, HYF, IEF**  
 HH MISS ADVANCE 4016P ET DOD, DLF, IEF

KB L1 DOMINO 521R CHB, DLF, HYF, IEF  
**KB L1 DOMINETTE 744T**  
 KB L1 DOMINETTE 514R

CL 1 DOMINO 2136M DLF, IEF  
 L1 DOMINETTE 93451 DOD  
 HH ADVANCE 0094K DLF, IEF  
 HH MISS ADVANCE 0023K DOD, DLF, IEF  
 CL 1 DOMINO 3138N 1ET CHB  
 MONTANA MISS 310 DOD  
 HH ADVANCE 2107M DLF, IEF  
 KB MISS CENTURION 236 DLF, IEF

- Here is a long patterned, solid marked, low birth weight 9016 son with a smooth shoulder that really blends in nicely. 1111Y is a straight lined, well balanced heifer bull prospect that has a long, fluid walk.
- Super balanced EPD's with BW, Milk and M&G all in the top 20% of the breed or better.
- Dam, 744, is a big, deep made, heavy milking 521 daughter that has a +34 Milk, a 107 WR and owned by Deer Creek Herefords of MN. A daughter sold to Climbin' Tree Ranch of CO and has Lot 41. A son was one of our top sellers last year at \$6,000 going to Garrett Ranch of SD.

**LOT 53 • KB L1 DOMINO 1111Y**

• **DAM OF LOT 52 •**  
**KB L1 DOMINETTE 765T ET**



• **DAM OF LOT 53 •**  
**KB L1 DOMINETTE 744T**

**LOT  
54**

BW..... 2.6  
 WW..... 43  
 YW..... 68  
 Milk.... 23  
 M&G... 44  
 REA.... .27  
 Marb... .15  
 CHB.... \$24

Act BW..... 83  
 9-14 Wt.... 710  
 Adj. 205.... 679  
 WDA..... 3.32

**KB L1 DOMINO 1112Y**

2/12/11 • #43179170



\* = SOD, CHB, DLF, IEF  
 \*\* = DOD, DLF, HYF, IEF

CL 1 DOMINO 637S 1ET CHB  
**CL 1 DOMINO 862U** DLF, IEF  
 CL 1 DOMINETTE 5131R  
 HH ADVANCE 7046G DLF, IEF  
**MONTANA MISS 455P**  
 MONTANA MISS 756

L1 DOMINO 03396 CHB, DLF, IEF  
 CL1 DOMINETTE 118L  
 HH ADVANCE 3113N 1ET CHB, SOD  
 CL 1 DOMINETTE 291M DOD  
 CL 1 DOMINO 500E SOD, DLF, IEF  
 HH MISS ADVANCE 496D DOD  
 JA L1 DOMINO 503 2ET SOD  
 MONTANA MISS 503

- A pigmented, red necked, wide based 862 son that is straight lined and has a super profile. This moderate framed, wide topped bull has a thick quarter and stands correct on good bone.
- Ranks in the top 30% or better for BW, Milk and M&G.
- Dam, 455, is a very long bodied, feminine fronted, nice uddered 7046 daughter by the elite 756 cow. 756's daughters have Lots 15, 34 and 49. A daughter sold in our cow sale to Knippling Herefords in SD. She was the dam of herd bull 641 that sold to Bob & Ryan Hermann of SD. Other sons went to Behm Herefords of ND and Ron Dryer of NE.

**LOT 54 • KB L1 DOMINO 1112Y****LOT  
55**

BW..... 0.2  
 WW..... 33  
 YW..... 50  
 Milk.... 33  
 M&G... 49  
 REA.... .16  
 Marb... .17  
 CHB.... \$16

Act BW..... 72  
 9-14 Wt.... 690  
 Adj. 205.... 670  
 WDA..... 3.26

**KB L1 DOMINO 1119Y**

2/14/11 • #43178983



\* = SOD, CHB, DLF, IEF  
 \*\* = DOD, DLF, HYF, IEF

CL 1 DOMINO 9126J 1ET \*  
**CL 1 DOMINO 592R 1ET** CHB  
 CL 1 DOMINETTE 974J  
 JD BIG ARTHUR 180  
**MONTANA MISS 294 ET**  
 LS MARKETTE 293 5ET

HH ADVANCE 767G 1ET \*  
 CL 1 DOMINETTE 490 DOD  
 HH ADVANCE 629F CHB  
 CL 1 DOMINETTE 543E  
 SR BIG ARTHUR H201  
 SR MARKETTE L518  
 LE GRAND DOMINO 7184 SOD  
 STAR MARKETTE 355 ET

- A very meaty, thick bodied 592 son that has a low birth weight, high maternal pedigree. 1119Y has lots of depth, capacity, length and width over his top.
- Ranks in the top 5% or better for BW and Milk.
- Dam, 294, is a moderate framed, very thick made Mark Donald cow that always brings in a good calf. She has a low birth weight ratio of 91 and still has a 99 WR as a nine year old cow.

**LOT 55 • KB L1 DOMINO 1119Y****LOT  
56**

BW..... 2.4  
 WW..... 50  
 YW..... 75  
 Milk.... 26  
 M&G... 51  
 REA.... .01  
 Marb... .17  
 CHB.... \$19

Act BW..... 80  
 9-14 Wt.... 655  
 Adj. 205.... 731  
 WDA..... 3.10

**KB L1 DOMINO 1123Y ET**

2/15/11 • #43179406



\* = SOD, CHB, DLF, IEF  
 \*\* = DOD, DLF, HYF, IEF

L1 DOMINO 03571 CHB, DLF, IEF  
**HH ADVANCE 9027W** DLF, HYF, IEF  
 HH MISS ADVANCE 6074S DLF, HYF, IEF  
 CL 1 DOMINO 484 SOD, DLF, IEF  
**MONTANA MISS 310** DOD  
 MONTANA MISS 837

L1 DOMINO 01384  
 L1 DOMINETTE 00532  
 CL 1 DOMINO 2136M DLF, IEF  
 HH MISS ADVANCE 1013L  
 L1 DOMINO 890061 DLF, IEF  
 CL 1 DOMINETTE 761  
 JA L1 DOMINO 503 2ET SOD  
 MONTANA MISS J236 DOD

- Here is a herd bull prospect by 9027 and the great 310 cow that has a super front end. 1123Y is a high volume, deep sided, very long made bull that just gets better every day. A great opportunity to own a power bull by a herd bull producing dam.
- Ranks in the top 25% of breed or better for BW, WW, Milk and M&G.
- Dam, 310, has done as much for our herd as any cow we have ever owned. She raised our 521 and 842 herd bulls and her daughters have sold to B&D Herefords of KS, Vulture Acres of ND, Jon Brown of ND, Johansen Herefords of UT and Bruce Anderson of ND.

**LOT 56 • KB L1 DOMINO 1123Y****DAM OF LOT 56 • MONTANA MISS 310**

**LOT  
57**

BW..... 1.3  
 WW..... 38  
 YW..... 61  
 Milk..... 23  
 M&G... 42  
 REA.... .14  
 Marb... .03  
 CHB.... \$14

Act BW..... 79  
 9-14 Wt.... 630  
 Adj. 205.... 612  
 WDA..... 3.00

**KB L1 DOMINO 1125Y**

2/16/11 • #43179338



\* = SOD, CHB, DLF, IEF  
 \*\* = DOD, DLF, HYF, IEF

L1 DOMINO 03571 CHB, DLF, IEF  
**HH ADVANCE 9027W** DLF, HYF, IEF  
 HH MISS ADVANCE 6074S DLF, HYF, IEF

JNHR DIAMOND ET 414B SOD  
**MONTANA MISS 2123** DOD  
 MONTANA MISS 814

L1 DOMINO 01384  
 L1 DOMINETTE 00532  
 CL 1 DOMINO 2136M DLF, IEF  
 HH MISS ADVANCE 1013L  
 BEL L DIAMOND 122 ET  
 CH AP AMY 41Y  
 HH ADVANCE 6046F  
 MONTANA MISS 503

- A really long made, red necked, solid marked 9027 son that has style and eye appeal. He is a very trim fronted, smooth shouldered heifer bull prospect that has a big loin, square rump and a wide quarter.
- Ranks in the top 15% of the breed for BW and Milk.
- Dam, 2123, is a very red, long made 414 daughter that has frame and a lot of depth. Bruce Anderson of ND owns this top performing cow. Sons have gone to Knipplings in SD, Burkes in ND, Ziebart's and Orwicks both in SD, and Behm's in ND.

**LOT 57 • KB L1 DOMINO 1125Y****LOT  
58**

BW..... 4.7  
 WW..... 47  
 YW..... 74  
 Milk.... 29  
 M&G... 52  
 REA.... .14  
 Marb... .00  
 CHB.... \$20

Act BW..... 94  
 9-14 Wt.... 675  
 Adj. 205.... 655  
 WDA..... 3.21

**KB L1 DOMINO 1126Y**

2/16/11 • #43181194



\* = SOD, CHB, DLF, IEF  
 \*\* = DOD, DLF, HYF, IEF

GB L1 DOMINO 935C CHB, DLF, IEF  
**JA L1 DOMINO 6002S**  
 JA L1 DOMINETTE 9203

JNHR DIAMOND ET 414B SOD  
**KB AMY 4147**  
 KB L1 DOMINETTE 081

CL 1 DOMINO 5131E SOD, DLF, IEF  
 GB L1 DOM PRCS 115 DOD  
 CL 1 DOMINO 484 SOD, DLF, IEF  
 JA L1 DOMINETTE 6815  
 BEL L DIAMOND 122 ET  
 CH AP AMY 41Y  
 CL 1 DOMINO 8164H  
 KB L1 DOMINETTE 602

- A very muscular, short marked 6002 son with a lot of depth and width. Our 6002 daughters averaged almost \$4,700 in our cow sale. 1126Y is a thick made bull from end to end and he carries his weight up high yet with all his thickness he has balance and eye appeal.
- Ranks in the top 5% of breed for Milk and M&G.
- Dam, 4147, is a big, broody, deep made 414 daughter that has been a consistent producer. Sons have gone to Michael Gilbert and Wyatt Mollman.

**LOT 58 • KB L1 DOMINO 1126Y****LOT  
59**

BW..... 4.2  
 WW..... 66  
 YW..... 99  
 Milk.... 29  
 M&G... 62  
 REA.... .18  
 Marb... .09  
 CHB.... \$31

Act BW..... 84  
 9-14 Wt.... 720  
 Adj. 205.... 788  
 WDA..... 3.43

**KB L1 DOMINO 1127Y**

2/16/11 • #43179329



\* = SOD, CHB, DLF, IEF  
 \*\* = DOD, DLF, HYF, IEF

CL 1 DOMINO 648S CHB, DLF, IEF  
**CL 1 DOMINO 849U** DLF, IEF  
 CL 1 DOMINETTE 591R 1ET

CL 1 DOMINO 795T 1ET CHB  
**KB L1 DOMINETTE 992W**  
 MONTANA MISS 6160

CL 1 DOMINO 461P 1ET CHB, DLF, IEF  
 CL 1 DOMINETTE 249M  
 CL 1 DOMINO 3162N CHB, DLF, IEF  
 CL 1 DOMINETTE 767G DOD  
 CL 1 DOMINO 477P CHB, DLF, IEF  
 CL 1 DOMINETTE 258M  
 L1 DOMINO 02336  
 KB DOMINETTE 353N ET DLF, HYF, IEF

- A really stylish, smooth fronted 849 son that catches your eye. 1127Y is a very long patterned, big middled bull with good frame and excellent EPD's.
- Ranks in the top 5% or better for WW, YW, Milk and M&G.
- Dam, 992, is a long made 795 first calf heifer that is short marked and milks very well . . . 111WR. Her dam, 6160, and grandam, 353N, are deep sided, long made, excellent milking cows that did outstanding jobs here. 353N is also the dam of herd bulls 844U and 935W.

**LOT 59 • KB L1 DOMINO 1127Y**

**LOT  
60**

BW..... -0.2  
 WW..... 32  
 YW..... 58  
 Milk..... 21  
 M&G... 36  
 REA.... .10  
 Marb... .08  
 CHB.... \$17

Act BW..... 73  
 9-14 Wt.... 570  
 Adj. 205... 553  
 WDA..... 2.71

**KB L1 DOMINO 1128Y**

2/16/11 • #43179160



\* = SOD, CHB, DLF, IEF  
 \*\* = DOD, DLF, HYF, IEF

KB L1 DOMINO 218 CHB, DLF, IEF  
**KB L1 DOMINO 826U**  
 KB L1 DOMINETTE 636  
 CL 1 DOMINO 484 SOD, DLF, IEF  
**KB L1 DOMINETTE 372**  
 KB L1 DOMINETTE 6143

HH ADVANCE 7046G DLF, IEF  
 MONTANA MISS 011  
 CL1 DOMINO 180L CHB, DLF, IEF  
 KB L1 DOMINETTE 323 DOD  
 L1 DOMINO 890061 DLF, IEF  
 CL 1 DOMINETTE 761  
 HH ADVANCE 311C SOD  
 KB MISS KING 143

- A low birth weight, smooth shouldered, stylish 826 son that is moderate framed. This pigmented, short marked, big testicle heifer bull prospect has a strong top.
- Ranks in the top 5% of the breed for BW and top 25% for Milk.
- Dam, 372, is a low birth weight (BWR 96.2) 484 daughter that has extra volume, capacity and total thickness. Sons have went to Lenard Hoskins of ND, Shepherd Herefords of KS and a daughter to Mark Giedd of ND.

**DAM OF LOT 60 • KB L1 DOMINETTE 372****LOT  
61**

BW..... 6.1  
 WW..... 53  
 YW..... 81  
 Milk.... 28  
 M&G... 54  
 REA.... .06  
 Marb... .04  
 CHB.... \$23

Act BW.....100  
 9-14 Wt.... 730  
 Adj. 205... 715  
 WDA..... 3.54

**KB L1 DOMINO 1130Y**

2/20/11 • #43179169



\* = SOD, CHB, DLF, IEF  
 \*\* = DOD, DLF, HYF, IEF

KB L1 DOMINO 521R CHB, DLF, HYF, IEF  
**KB L1 DOMINO 844U**  
 KB DOMINETTE 353N ET DLF, HYF, IEF  
 KB STOCKMAN 903 CHB  
**KB L1 DOMINETTE 447P** DLF, IEF  
 KB L1 DOMINETTE 639

CL 1 DOMINO 3138N 1ET CHB  
 MONTANA MISS 310 DOD  
 JD BIG ARTHUR 180  
 CL 1 DOMINETTE 7188G  
 HH ADVANCE 7046G DLF, IEF  
 MONTANA MISS J336 DOD  
 HH ADVANCE 420D  
 KB L1 DOMINETTE 408

- Performance bull with tremendous guts and volume. This beefy 844 son should really click on a set of black cows. He is thick made from end to end, especially over his loin, yet he has correctness and balance.
- Ranks in the top 5% of the breed for Milk and M&G; top 25% or better for WW and YW.
- Dam, 447, is a freckled faced, highly pigmented, solid marked, long bodied Stockman daughter that has been a consistent producer. . . 100 WR. Her dam, 639, was a top producer that stayed in the herd until she was twelve.

**LOT 61 • KB L1 DOMINO 1130Y****LOT  
62**

BW..... 3.7  
 WW..... 48  
 YW..... 90  
 Milk.... 23  
 M&G... 47  
 REA.... .14  
 Marb... .07  
 CHB.... \$22

Act BW..... 88  
 9-14 Wt.... 650  
 Adj. 205... 667  
 WDA..... 3.16

**KB L1 DOMINO 1132Y**

2/20/11 • #43178889



\* = SOD, CHB, DLF, IEF  
 \*\* = DOD, DLF, HYF, IEF

CL 1 DOMINO 637S 1ET CHB  
**CL 1 DOMINO 993W** DLF, HYF, IEF  
 CL 1 DOMINETTE 5142R DOD  
 CL 1 DOMINO 484 SOD, DLF, IEF  
**JA L1 DOMINETTE 0220**  
 JA L1 DOMINETTE 7809 DOD

L1 DOMINO 03396 CHB, DLF, IEF  
 CL 1 DOMINETTE 118L  
 CL1 DOMINO 1172L  
 CL 1 DOMINETTE 810H  
 L1 DOMINO 890061 DLF, IEF  
 CL 1 DOMINETTE 761  
 HH ADVANCE 388C SOD  
 JA L1 DOMINETTE 3567

- A well pigmented, short marked, extra long made 993 son that has really come on since weaning. 1132 is a deep ribbed, smooth bodied, big testicled bull with strong EPDs.
- Ranks in the top 10% for YW and the top 15% for Milk and M&G.
- Dam, 0220, is a coon-eyed, very short marked 484 daughter that is long, deep and thick. She sold to Sandrock Herefords of WI, and daughters sold to Coon Herefords, KS, Zens Herefords, SD, and Marvin Fisher of IA.

**LOT 62 • KB L1 DOMINO 1132Y****DAM OF LOT 62 • JA L1 DOMINETTE 0220**

**LOT  
63**

BW..... 3.0  
 WW..... 40  
 YW..... 67  
 Milk.... 25  
 M&G... 45  
 REA.... .18  
 Marb... .14  
 CHB.... \$21

Act BW..... 86  
 9-14 Wt..... 660  
 Adj. 205.... 659  
 WDA..... 3.22

**KB L1 DOMINO 1133Y**

2/21/11 • #43179214



\* = SOD, CHB, DLF, IEF  
 \*\* = DOD, DLF, HYF, IEF

CL 1 DOMINO 206M	CL 1 DOMINO 9126J 1ET *
<b>HH ADVANCE 6001S</b>	CL 1 DOMINETTE 825H **
HH MISS ADVANCE 1088L DOD, DLF, IEF	CL 1 DOMINO 824H SOD, DLF, IEF
	HH MS ADVANCE 8016H
CL 1 DOMINO 417P CHB, DLF, IEF	CL 1 DOMINO 212M *
<b>MONTANA MISS 650</b>	CL 1 DOMINETTE 0112K 1ET
MONTANA MISS 7123	JA L1 DOMINO 3565
	MONTANA MISS J916 DOD

- Here is a red necked, short marked, typical 6001 son that has pigment, length and smoothness. He is a straight lined, very correct bull with a lot of maternal strength and eye appeal.
- Ranks in the top 10% of breed for Milk.
- Dam, 650, is a solid marked, long bodied 417 daughter by a strong cow family. Her dam stayed in the herd for 12 years and is grandam of Lot 7. 650's sons have gone to Scott Huber of SD and Dolezal Ranch of NE.



**LOT 63 • KB L1 DOMINO 1133Y**

**LOT  
64**

BW..... 2.7  
 WW..... 42  
 YW..... 75  
 Milk.... 31  
 M&G... 52  
 REA.... .12  
 Marb... .09  
 CHB.... \$22

Act BW..... 86  
 9-14 Wt..... 680  
 Adj. 205.... 696  
 WDA..... 3.35

**KB L1 DOMINO 1137Y**

2/23/11 • #43179270



\* = SOD, CHB, DLF, IEF  
 \*\* = DOD, DLF, HYF, IEF

HH ADVANCE 5061R ET CHB, DLF, IEF	CL 1 DOMINO 2136M DLF, IEF
<b>HH ADVANCE 9016W ET DLF, HYF, IEF</b>	L1 DOMINETTE 93451 DOD
HH MISS ADVANCE 4016P ET DOD, DLF, IEF	HH ADVANCE 0094K DLF, IEF
	HH MISS ADVANCE 0023K DOD, DLF, IEF
CL 1 DOMINO 461P 1ET CHB, DLF, IEF	CL 1 DOMINO 1172L
<b>KB L1 DOMINETTE 775T</b>	CL 1 DOMINETTE 952J
KB DOMINETTE 421P	KB ROBIN DOMINO 266
	KB AMY 1158 DOD

- An extremely long made 9016 son that is correct and has a strong top. 1137Y has a lot of eye appeal, a long, deep quarter and a fabulous cow family.
- Ranks in the top 1% of the breed for Milk and top 30% for BW.
- Dam, 775, is a very smooth fronted, feminine, long 461 daughter that is freckle faced and an excellent milker. She has a 101 WR and a +31 Milk. Dennis Quivey of SD purchased her and a 7110 son. Her dam, 421, is a powerful cow that has Lot 48.



**• DAM OF LOT 65 •  
MONTANA MISS 740T**

**LOT  
65**

BW..... 1.3  
 WW..... 48  
 YW..... 84  
 Milk.... 31  
 M&G... 54  
 REA.... .31  
 Marb... .10  
 CHB.... \$26

Act BW..... 82  
 9-14 Wt..... 675  
 Adj. 205.... 690  
 WDA..... 3.33

**KB L1 DOMINO 1138Y**

2/23/11 • #43179260



\* = SOD, CHB, DLF, IEF  
 \*\* = DOD, DLF, HYF, IEF

KB L1 DOMINO 218 CHB, DLF, IEF	HH ADVANCE 7046G DLF, IEF
<b>KB L1 DOMINO 826U</b>	MONTANA MISS 011
KB L1 DOMINETTE 636	CL1 DOMINO 180L CHB, DLF, IEF
	KB L1 DOMINETTE 323 DOD
CL 1 DOMINO 9126J 1ET *	HH ADVANCE 767G 1ET *
<b>MONTANA MISS 740T</b>	CL 1 DOMINETTE 490 DOD
MONTANA MISS 1134	JA L1 DOMINO 503 2ET SOD
	MONTANA MISS J336 DOD

- A low birth weight herd bull prospect with top EPD's and enough frame to keep growing. He is a solid marked, red necked, smooth made 826 son that is thick topped, exhibits extra length and has a deep, full quarter.
- Ranks in the top 1% of the breed for Milk, top 10% for BW and top 20% for YW.
- Dam, 740, is already proving to be a valuable producer. She is the Dam of KB L1 Domino 922W and she had one of our best 2010 bulls that got hurt. She is a long, thick made 9126 daughter by one of our very best cow lines. 740 has a 86 YW, +36 Milk, 107 WR and is owned by Deer Creek Herefords in MN.



**LOT 65 • KB L1 DOMINO 1138Y**

**LOT  
66**

BW..... 2.7  
 WW..... 44  
 YW..... 67  
 Milk..... 30  
 M&G... 52  
 REA.... .32  
 Marb... .02  
 CHB.... \$18

Act BW..... 62  
 9-14 Wt.... 650  
 Adj. 205... 652  
 WDA..... 3.22

**KB L1 DOMINO 1139Y**

2/24/11 • #43178941



\* = SOD, CHB, DLF, IEF  
 \*\* = DOD, DLF, HYF, IEF

HH ADVANCE 5104R CHB, DLF, IEF  
**KB L1 DOMINO 935W**  
 KB DOMINETTE 353N ET DLF, HYF, IEF

JH MARK 9454 1ET  
**KB L1 MARKETTE 243** DLF, IEF  
 KB L1 DOMINETTE 827

CL 1 DOMINO 206M  
 HH MISS ADVANCE 153L DOD, DLF, IEF  
 JD BIG ARTHUR 180  
 CL 1 DOMINETTE 7188G  
 JD BIG ARTHUR 180  
 IMR L1 MARKETTE 6062  
 HH ADVANCE 6046F  
 SL MISS DOMINA 003

- A deep made, big middled, wide chested 935 TWIN that is moderate in frame. He is a short marked, red necked, thick made bull that is an easy keeper.
- Ranks in the top 5% of the breed for Milk and M&G; top 30% for BW.
- Dam, 243, is a moderate framed, yellow haired, deep made, nine year old 9454 daughter that has maintained a 100 WR. Sons have sold to Garrett Ranch in SD, Joe Breeding in MT and Southern Cross Ranch of CO. Two daughters sold in our cow sale for \$19,000 and \$5,500. Their sons sell as Lots 19 and 31.



**LOT 66 • KB L1 DOMINO 1139Y**

**LOT  
67**

BW..... 2.0  
 WW..... 37  
 YW..... 59  
 Milk..... 26  
 M&G... 44  
 REA.... .01  
 Marb... .16  
 CHB.... \$16

Act BW..... 80  
 9-14 Wt.... 605  
 Adj. 205... 609  
 WDA..... 3.01

**KB L1 DOMINO 1141Y**

2/25/11 • #43178897



\* = SOD, CHB, DLF, IEF  
 \*\* = DOD, DLF, HYF, IEF

HH ADVANCE 5061R ET CHB, DLF, IEF  
**HH ADVANCE 9016W ET** DLF, HYF, IEF  
 HH MISS ADVANCE 4016P ET DOD, DLF, IEF

BAR-N CENTURION 921J  
**KB MISS CENTURION 236** DLF, IEF  
 KB L1 DOMINETTE 835

CL 1 DOMINO 2136M DLF, IEF  
 L1 DOMINETTE 93451 DOD  
 HH ADVANCE 0094K DLF, IEF  
 HH MISS ADVANCE 0023K DOD, DLF, IEF  
 BP MAMMING ET 109G CHB  
 LCI 83A TRANSALTA LASS 36C  
 JA L1 DOMINO 503 2ET SOD  
 VR MS ADV E757 5ET

- Here is a goggle eyed, red necked, short marked 9016 son that is moderate framed. He is a correct structured, well balanced, deep sided bull with good muscle mass.
- Ranks in the top 10% for Milk and top 20% for BW.
- Dam, 236, is a meaty, long made, nine year old Centurion daughter that still has a great udder. As an eight year old she weaned one of our best heifer calves and she is the dam of 415, the mother of our 2007 top seller, 632.



**LOT 67 • KB L1 DOMINO 1141Y**

**LOT  
68**

BW..... 4.8  
 WW..... 47  
 YW..... 81  
 Milk.... 31  
 M&G... 54  
 REA.... .20  
 Marb... .03  
 CHB.... \$22

Act BW..... 96  
 9-14 Wt.... 685  
 Adj. 205... 686  
 WDA..... 3.46

**KB L1 DOMINO 1148Y**

2/27/11 • #43179164



\* = SOD, CHB, DLF, IEF  
 \*\* = DOD, DLF, HYF, IEF

CL 1 DOMINO 206M  
**HH ADVANCE 6001S**  
 HH MISS ADVANCE 1088L DOD, DLF, IEF

JA L1 DOMINO 9213 \*  
**KB L1 DOMINETTE 414P** DOD  
 KB AMY 1157 DOD

CL 1 DOMINO 9126J 1ET \*  
 CL 1 DOMINETTE 825H \*\*  
 CL 1 DOMINO 824H SOD, DLF, IEF  
 HH MS ADVANCE 8016H  
 CL 1 DOMINO 484 SOD, DLF, IEF  
 JA L1 DOMINETTE 6554 DOD  
 JNHR DIAMOND ET 414B SOD  
 KB L1 DOMINETTE 7130

- This coon-eyed, long 6001 son has very little white on him. He is a big middled bull and the right kind to convert grass to meat. 1148Y is a smooth made, performance bull that has a powerful maternal cow family.
- Ranks in the top 1% of the breed for Milk with WW, YW, and M&G at 35% or better.
- Dam, 414, is a coon-eyed cow that is the right kind that everyone likes. She sold in our 2009 sale to Bruce Anderson of ND for \$4,200. Her daughter, 647, was the dam to our own second high seller at \$17,500 and she has a super April bull. 414 has a 103 WR, +32 Milk, 91 YW and other sons have sold to Rothrock Herefords of CO and Southern Cross of CO.



**LOT 68 • KB L1 DOMINO 1148Y**



**DAM OF LOT 68 • KB L1 DOMINETTE 414P**



**LOT  
69**

BW..... 2.3  
 WW..... 41  
 YW..... 69  
 Milk.... 29  
 M&G... 49  
 REA.... .29  
 Marb... .06  
 CHB.... \$20

Act BW..... 86  
 9-14 Wt.... 650  
 Adj. 205.... 664  
 WDA..... 3.30

**KB L1 DOMINO 1150Y**

2/28/11 • #43179210



\* = SOD, CHB, DLF, IEF  
 \*\* = DOD, DLF, HYF, IEF

HH ADVANCE 5061R ET CHB, DLF, IEF  
**HH ADVANCE 9016W ET** DLF, HYF, IEF  
 HH MISS ADVANCE 4016P ET DOD, DLF, IEF

CL 1 DOMINO 9126J 1ET \*  
**MONTANA MISS 644 ET**  
 MONTANA MISS 6154 DOD

CL 1 DOMINO 2136M DLF, IEF  
 L1 DOMINETTE 93451 DOD  
 HH ADVANCE 0094K DLF, IEF  
 HH MISS ADVANCE 0023K DOD, DLF, IEF  
 HH ADVANCE 767G 1ET \*  
 CL 1 DOMINETTE 490 DOD  
 HH ADVANCE 311C SOD  
 MONTANA MISS 938

- A very smooth fronted, trim made, long profile 9016 son that holds his head up like a herd bull. He is a pigmented, short marked bull with good depth of side. 1150Y has a tremendous amount of genetic potential.
- Ranks in the top 5% of the breed for Milk and in the top 25% for BW and M&G.
- Dam, 644, is a full sister to herd bull 655, sire of 842, that is a top Fisher cow. She has volume, rib, eye appeal and maternal strength. Her three top daughters sold in our 2011 cow sale to Vulture Acres of ND, Lewis Byers of IA and Knippling Herefords of SD.



• **DAM OF LOT 71** •  
**MONTANA MISS 524R**

**LOT  
70**

BW..... 1.0  
 WW..... 44  
 YW..... 72  
 Milk.... 21  
 M&G... 43  
 REA.... .19  
 Marb... .06  
 CHB.... \$20

Act BW..... 76  
 9-14 Wt.... 570  
 Adj. 205.... 582  
 WDA..... 2.82

**KB L1 DOMINO 1152Y**

3/02/11 • #43179012



\* = SOD, CHB, DLF, IEF  
 \*\* = DOD, DLF, HYF, IEF

CL 1 DOMINO 637S 1ET CHB  
**CL 1 DOMINO 993W** DLF, HYF, IEF  
 CL 1 DOMINETTE 5142R DOD

HH ADVANCE 0072K DLF, IEF  
**MONTANA MISS 295**  
 MONTANA MISS 037 DOD

L1 DOMINO 03396 CHB, DLF, IEF  
 CL1 DOMINETTE 118L  
 CL1 DOMINO 1172L  
 CL 1 DOMINETTE 810H  
 CL 1 DOMINO 7120G ET  
 HH MS ADVANCE 8084H  
 HH ADVANCE 7038G SOD  
 MONTANA MISS 6154 DOD

- Here is a moderate framed, highly pigmented bull that is red necked and red to the ground. This heifer bull prospect is a very smooth shouldered, deep made 993 son that is big middled with extra eye appeal.
- Ranks in the top 7% for BW with the remainder of the EPD's above breed average.
- Dam, 295, is a grand 0072 daughter by herd bull 450's dam 037 that was a donor cow and now owned by Bruce Anderson of ND. Daughters have sold to Anderson of ND, Knippling of SD, Friedt of ND, and Loren Duscherer of ND. Sons have gone to Behm and Rod Brown both of ND.



**LOT 70 • KB L1 DOMINO 1152Y**

**LOT  
71**

BW..... 2.8  
 WW..... 55  
 YW..... 84  
 Milk.... 28  
 M&G... 55  
 REA.... .24  
 Marb... .07  
 CHB.... \$22

Act BW..... 84  
 9-14 Wt.... 590  
 Adj. 205.... 704  
 WDA..... 3.11

**KB L1 DOMINO 1160Y ET**

3/8/11 • #43179417



\* = SOD, CHB, DLF, IEF  
 \*\* = DOD, DLF, HYF, IEF

L1 DOMINO 03571 CHB, DLF, IEF  
**HH ADVANCE 9027W** DLF, HYF, IEF  
 HH MISS ADVANCE 6074S DLF, HYF, IEF

GB L1 DOMINO 175E CHB, DLF, HYF, IEF  
**MONTANA MISS 524R** DLF, HYF, IEF  
 MONTANA MISS 1164

L1 DOMINO 01384  
 L1 DOMINETTE 00532  
 CL 1 DOMINO 2136M DLF, IEF  
 HH MISS ADVANCE 1013L  
 HH ADVANCE 767G 1ET \*  
 GB L1 DOM PRCS 3134 DOD  
 JNHR DIAMOND ET 414B SOD  
 MONTANA MISS 421

- A classy, well balanced, ET calf by 9027 that is very smooth fronted out of a great cow. He is a strong topped bull that has excellent depth of side, spring of rib and a deep quarter.
- Ranks in the top 5% of the breed for Milk and M&G; top 30% for better for WW, YW and BW.
- Dam, 524, is a power cow that exhibits length, depth, thickness and milking ability. She was a donor cow with a 110 WR, 111 YR, +33 Milk, 93 YW and sold to Tracy Sachtjen of NE. Daughters sold to Vulture Acres of ND and Rell Ranch in UT. Sons going to Garrett Ranch and Tenold's both in SD.



**LOT 71 • KB L1 DOMINO 1160Y ET**

**LOT  
72**

BW..... 2.8  
 WW..... 56  
 YW..... 95  
 Milk..... 25  
 M&G... 53  
 REA.... .12  
 Marb... .16  
 CHB.... \$26

Act BW..... 79  
 9-14 Wt.... 650  
 Adj. 205.... 695  
 WDA..... 3.42

**KB L1 DOMINO 1161Y**

3/8/11 • #43179365



\* = SOD, CHB, DLF, IEF  
 \*\* = DOD, DLF, HYF, IEF

CL 1 DOMINO 590R CHB, DLF, IEF  
**CL 1 DOMINO 7110T** CHB  
 CL 1 DOMINETTE 332N DOD

L1 DOMINO 02336  
**KB L1 DOMINETTE 7116T**  
 KB AMY 1158 DOD

CL 1 DOMINO 246M SOD, DLF, IEF  
 CL 1 DOMINETTE 258M  
 CL 1 DOMINO 9126J 1ET \*  
 CL 1 DOMINETTE 875H  
 L1 DOMINO 00499  
 L1 DOMINETTE 95443  
 JNHR DIAMOND ET 414B SOD  
 KB L1 DOMINETTE 7130

- A pigmented, red necked, short marked, low birth weight 7110 son. He is very smooth made especially through his shoulders and is long made from end to end. 1161Y has good width over his top, depth of side and super EPD's.
- Ranks in the top 5% for WW, YW and M&G; top 10% for Milk.
- Dam, 7116, is a feminine, very angular, long patterned 02336 daughter by foundation cow 1158. She has a 100 WR and sold to Sandrock Herefords of WI. A daughter also sold to Sandrock and another sold for \$4,000 to Stuber Herefords of ND, she has Lot 39.

**LOT 72 • KB L1 DOMINO 1161Y****LOT  
73**

BW..... 1.4  
 WW..... 44  
 YW..... 78  
 Milk.... 24  
 M&G... 46  
 REA.... .10  
 Marb... .10  
 CHB.... \$24

Act BW..... 76  
 9-14 Wt.... 640  
 Adj. 205.... 664  
 WDA..... 3.39

**KB L1 DOMINO 1162Y**

3/9/11 • #43179346



\* = SOD, CHB, DLF, IEF  
 \*\* = DOD, DLF, HYF, IEF

KB L1 DOMINO 218 CHB, DLF, IEF  
**KB L1 DOMINO 826U**  
 KB L1 DOMINETTE 636

CL 1 DOMINO 965J 1ET DLF, HYF, IEF  
**MONTANA MISS 4169** DOD  
 JA L1 DOMINETTE 0220

HH ADVANCE 7046G DLF, IEF  
 MONTANA MISS 011  
 CL 1 DOMINO 180L CHB, DLF, IEF  
 KB L1 DOMINETTE 323 DOD  
 L1 DOMINO 95461 SOD, DLF, IEF  
 CL 1 DOMINETTE 178 DOD  
 CL 1 DOMINO 484 SOD, DLF, IEF  
 JA L1 DOMINETTE 7809 DOD

- A smooth shouldered, moderate framed 826 son that is trim up front. This heifer bull prospect is straight topped and correct with good EPD's. He would be a top bull for black heifers.
- Ranks in the top 15% for BW and Milk.
- Dam, 4169, is a big bodied, long sided, thick Fisher cow that has a 104 WR. Her dam, 0220, has Lot 62 and sold to Sandrock of WI. Two daughters of 4169 went to Climbin' Tree Ranch of CO and a son went to Cove Land & Cattle of UT and Lorrell Brady of UT.

**• DAM OF LOT 74 •  
KB L1 DOMINETTE 415P****LOT  
74**

BW..... 4.4  
 WW..... 55  
 YW..... 79  
 Milk.... 15  
 M&G... 43  
 REA.... .49  
 Marb... -.05  
 CHB.... \$23

Act BW..... 86  
 9-14 Wt.... 630  
 Adj. 205.... 754  
 WDA..... 3.33

**KB DOMINO 1163Y**

3/9/11 • #43179421



\* = SOD, CHB, DLF, IEF  
 \*\* = DOD, DLF, HYF, IEF

GH RAMBO 279R CHB, DLF, HYF, IEF  
**S MILE WIDE 28U ET** DLF, IEF  
 LPG STANDARD DOMINO LASS 52H

KB L1 DOMINO 218 CHB, DLF, IEF  
**KB L1 DOMINETTE 415P**  
 KB MISS CENTURION 236 DLF, IEF

GH NEON 17N CHB  
 HR GOLD DOMINO 251E  
 95J STANDARD 38R  
 LPG DOMINO SANDMAN LASS 60F  
 HH ADVANCE 7046G DLF, IEF  
 MONTANA MISS 011  
 BAR-N CENTURION 921J  
 KB L1 DOMINETTE 835

- A super fronted, smooth made 28U ET calf by one of 218's greatest daughters. He is a big, wide top, thick patterned bull that walks wide behind. 1163Y has the look, profile and stout mass to be a good show steer sire.
- Ranks in the top 10% for WW and top 30% or better for YW and M&G.
- Dam, 415, is a deep, feminine fronted, long donor cow with a beautiful udder. She sold to Ravine Creek Ranch of SD and her dam has Lot 67.

**LOT  
75**

BW..... 5.2  
 WW..... 54  
 YW..... 89  
 Milk.... 31  
 M&G... 58  
 REA.... .34  
 Marb... .05  
 CHB.... \$26

Act BW..... 87  
 9-14 Wt.... 640  
 Adj. 205.... 704  
 WDA..... 3.40

**KB L1 DOMINO 1164Y**

3/10/11 • #43179291



\* = SOD, CHB, DLF, IEF  
 \*\* = DOD, DLF, HYF, IEF

KB L1 DOMINO 655 ET CHB, DLF, IEF  
**KB L1 DOMINO 842U** DLF, IEF  
 MONTANA MISS 310 DOD

CL 1 DOMINO 592R 1ET CHB  
**KB L1 DOMINETTE 846U**  
 KB L1 DOMINETTE 633

CL 1 DOMINO 9126J 1ET \*  
 MONTANA MISS 6154 DOD  
 CL 1 DOMINO 484 SOD, DLF, IEF  
 MONTANA MISS 837  
 CL 1 DOMINO 9126J 1ET \*  
 CL 1 DOMINETTE 974J  
 CL1 DOMINO 180L CHB, DLF, IEF  
 KB AMY 1158 DOD

- Here is a super long, growthy, very trim angular fronted 842 son that has a very maternal pedigree. 1164Y has a big top and a lot of spring of rib with strong EPD's.
- Ranks in the top 17% of the breed for Milk and M&G; top 10% for WW and YW.
- Dam, 846, is a big, long bodied, pigmented 592 daughter that Sidwell Herefords of CO purchased. She has 109 WR, 91 YW, +35 Milk, 62 M&G and a powerful cow family behind her.

**LOT  
76**

**KB L1 DOMINO 1165Y**

3/10/11 • #43179224



\* = SOD, CHB, DLF, IEF  
\*\* = DOD, DLF, HYF, IEF

BW..... 4.5  
WW..... 53  
YW..... 88  
Milk.... 36  
M&G... 62  
REA.... .35  
Marb... .00  
CHB.... \$24

HH ADVANCE 5104R CHB, DLF, IEF  
**KB L1 DOMINO 935W**  
KB DOMINETTE 353N ET DLF, HYF, IEF  
CL 1 DOMINO 206M  
HH MISS ADVANCE 153L DOD, DLF, IEF  
JD BIG ARTHUR 180  
CL 1 DOMINETTE 7188G  
CL 1 DOMINO 9126J 1ET \*  
KB MISS MARK 144  
KB STOCKMAN 903 CHB  
KB L1 DOMINETTE 639

- A short marked, complete, well balanced 935 son that is the right kind. He is a big middled, thick bull that has width and spread with outstanding EPD's.
- Ranks in the top 1% for Milk and M&G; top 15% for WW and YW.
- Dam, 671, is a highly pigmented, freckled, long 454 daughter that has a lot of body and milking ability. She has a 105 WR, 105 YR, +34 Milk and sold to Don Sonsalla of ND. Daughters sold to Dufur Herefords of OK and Tom Granzow of KS. A son sold to Wyatt Mollman of SD.



**LOT 76 • KB L1 DOMINO 1165Y**

Act BW..... 92  
9-14 Wt..... 645  
Adj. 205.... 680  
WDA..... 3.43



**DAM OF LOT 76 • KB L1 DOMINETTE 671**



**DAM OF LOT 77 • MONTANA MISS 310**

**LOT  
77**

**KB L1 DOMINO 1170Y**

3/14/11 • #43179083



\* = SOD, CHB, DLF, IEF  
\*\* = DOD, DLF, HYF, IEF

BW..... 2.1  
WW..... 55  
YW..... 86  
Milk.... 28  
M&G... 55  
REA.... .05  
Marb... .18  
CHB.... \$24

CL 1 DOMINO 590R CHB, DLF, IEF  
**CL 1 DOMINO 7110T CHB**  
CL 1 DOMINETTE 332N DOD  
CL 1 DOMINO 246M SOD, DLF, IEF  
CL 1 DOMINETTE 258M  
CL 1 DOMINO 9126J 1ET \*  
CL 1 DOMINETTE 875H  
L1 DOMINO 890061 DLF, IEF  
CL 1 DOMINETTE 761  
JA L1 DOMINO 503 2ET SOD  
MONTANA MISS J236 DOD  
CL 1 DOMINO 484 SOD, DLF, IEF  
**MONTANA MISS 310 DOD**  
MONTANA MISS 837

- This thick bodied, stylish, smooth made 7110 son has the genetics to be a breed changer. He is a low birth weight, deep sided, big hipped bull with hard to get EPD's. A heifer bull prospect that will be a genetic powerhouse.
- Ranks in the top 20% or better for all five traits.
- Dam, 310, is a herd bull producing donor cow. She sold to Stutheit Herefords of NE, another son is Lot 56 and five daughters have averaged \$5,400.
- Retaining 1/2 semen interest and 1/2 semen sales.



**LOT 77 • KB L1 DOMINO 1170Y**

Act BW..... 77  
9-14 Wt..... 635  
Adj. 205.... 670  
WDA..... 3.51

**LOT  
78**

BW..... 4.1  
 WW..... 53  
 YW..... 83  
 Milk.... 31  
 M&G... 57  
 REA.... .25  
 Marb... .00  
 CHB.... \$24

Act BW..... 83  
 9-14 Wt.... 660  
 Adj. 205.... 746  
 WDA..... 3.67

**KB L1 DOMINO 1171Y**

3/18/11 • #43179307



\* = SOD, CHB, DLF, IEF  
 \*\* = DOD, DLF, HYF, IEF

KB L1 DOMINO 655 ET CHB, DLF, IEF  
**KB L1 DOMINO 842U** DLF, IEF  
 MONTANA MISS 310 DOD

KB L1 DOMINO 509R  
**MONTANA MISS 880U**  
 MONTANA MISS 625

CL 1 DOMINO 9126J 1ET \*  
 MONTANA MISS 6154 DOD  
 CL 1 DOMINO 484 SOD, DLF, IEF  
 MONTANA MISS 837  
 GB L1 DOMINO 175E CHB, DLF, HYF, IEF  
 MONTANA MISS 668 DOD  
 CL 1 DOMINO 9126J 1ET \*  
 MONTANA MISS 310 DOD

- Here is a stout, moderate framed 842 son that is double bred to the 310 cow. 1171Y is a very correct structured, deep sided bull with a lot of guts, length and thickness. He is a top gaining bull with a strong cow family.
- Ranks in the top 1% for Milk and top 20% or better for WW, YW and M&G.
- Dam, 880, is a short marked, long, deep ribbed 509 daughter with a beautiful udder and a 108 WR. She sold to Sandrock Herefords of WI and a son is working for Behm Herefords of ND. Powerful cows and Dam of Distinctions in 1171's pedigree!



• **DAM OF LOT 80** •  
**MONTANA MISS 524R**

**LOT  
79**

BW..... 4.4  
 WW..... 46  
 YW..... 72  
 Milk.... 28  
 M&G... 51  
 REA.... .16  
 Marb... .14  
 CHB.... \$23

Act BW..... 89  
 9-14 Wt.... 580  
 Adj. 205.... 641  
 WDA..... 3.28

**KB L1 DOMINO 1176Y**

3/21/11 • #43179360



\* = SOD, CHB, DLF, IEF  
 \*\* = DOD, DLF, HYF, IEF

CL 1 DOMINO 206M  
**HH ADVANCE 6001S**  
 HH MISS ADVANCE 1088L DOD, DLF, IEF

CL 1 DOMINO 417P CHB, DLF, IEF  
**KB L1 DOMINETTE 6153**  
 KB L1 DOMINETTE 4128P

CL 1 DOMINO 9126J 1ET \*  
 CL 1 DOMINETTE 825H \*\*  
 CL 1 DOMINO 824H SOD, DLF, IEF  
 HH MS ADVANCE 8016H  
 CL 1 DOMINO 212M \*  
 CL 1 DOMINETTE 0112K 1ET  
 CL 1 DOMINO 958J DLF, IEF  
 KB L1 DOMINETTE 867

- A solid marked, smooth fronted, growthy 6001 son that is very long from end to end. He also has good depth of body and thickness for his age.
- Ranks in the top 5% of the breed for Milk and M&G.
- Dam, 6153, is a very red, long made, feminine 417 daughter that has a nice udder with good milk flow. She sold to Lewis Byers of IA, a daughter went to B&D Herefords of KS and a son to Bruce Forney of NE. She has a 104 WR.



**LOT 79 • KB L1 DOMINO 1176Y**

**LOT  
80**

BW..... 4.1  
 WW..... 45  
 YW..... 76  
 Milk.... 30  
 M&G... 53  
 REA.... .40  
 Marb... -.05  
 CHB.... \$21

Act BW..... 83  
 9-14 Wt.... 545  
 Adj. 205.... 596  
 WDA..... 3.25

**KB L1 DOMINO 1180Y**

3/24/11 • #43179189



\* = SOD, CHB, DLF, IEF  
 \*\* = DOD, DLF, HYF, IEF

KB L1 DOMINO 655 ET CHB, DLF, IEF  
**KB L1 DOMINO 842U** DLF, IEF  
 MONTANA MISS 310 DOD

GB L1 DOMINO 175E CHB, DLF, HYF, IEF  
**MONTANA MISS 524R** DLF, HYF, IEF  
 MONTANA MISS 1164

CL 1 DOMINO 9126J 1ET \*  
 MONTANA MISS 6154 DOD  
 CL 1 DOMINO 484 SOD, DLF, IEF  
 MONTANA MISS 837  
 HH ADVANCE 767G 1ET \*  
 GB L1 DOM PRCS 3134 DOD  
 JNHR DIAMOND ET 414B SOD  
 MONTANA MISS 421

- Here is a highly pigmented, solid marked 842 son by the elite 524 donor cow that will catch your eye. He is a thick bodied, wide topped bull with a lot of muscle mass and width throughout. Bull with excellent genetic potential and strong EPD's.
- Ranks in the top 5% for Milk and M&G.
- Dam, 524, is a herd changing cow where every calf she raised was one of the best. Daughter, 760 has a super bull, Lot 51. Another son sells as Lot 71.



**LOT 80 • KB L1 DOMINO 1180Y**

**LOT  
81**

BW..... 4.7  
 WW..... 56  
 YW..... 90  
 Milk..... 27  
 M&G... 55  
 REA... .23  
 Marb... .09  
 CHB... \$25

Act BW..... 85  
 9-14 Wt..... 575  
 Adj. 205.... 651  
 WDA..... 3.29

**KB L1 DOMINO 1182Y**

3/26/11 • #43179266



\* = SOD, CHB, DLF, IEF  
 \*\* = DOD, DLF, HYF, IEF

KB L1 DOMINO 521R CHB, DLF, HYF, IEF  
**KB L1 DOMINO 844U**  
 KB DOMINETTE 353N ET DLF, HYF, IEF

KB L1 DOMINO 311 CHB, DLF, IEF  
**MONTANA MISS 762T**  
 MONTANA MISS 295

CL 1 DOMINO 3138N 1ET CHB  
 MONTANA MISS 310 DOD  
 JD BIG ARTHUR I80  
 CL 1 DOMINETTE 7188G  
 CL 1 DOMINO 484 SOD, DLF, IEF  
 MONTANA MISS 1134  
 HH ADVANCE 0072K DLF, IEF  
 MONTANA MISS 037 DOD

- A pigmented, thick, meaty 844 son with lots of length. He is a deep sided, wide made, performance bull with a big hip and should add pounds and dollars to his calves.
- Ranks in the top 5% for WW, Milk and M&G.
- Dam, 762, is a coon-eyed, short marked, long made 311 daughter by a top cow, 295, that has Lot 70. She has a 102 WR and daughters going to Dale Belfy in MN and Lewis Byers in IA. She is the grandam of Lot 24.



**LOT 81 • KB L1 DOMINO 1182Y**

**LOT  
82**

BW..... 7.8  
 WW..... 55  
 YW..... 95  
 Milk..... 27  
 M&G... 55  
 REA... .28  
 Marb... .01  
 CHB... \$24

Act BW..... 100  
 9-14 Wt..... 585  
 Adj. 205.... 653  
 WDA..... 3.46

**KB L1 DOMINO 1188Y**

3/30/11 • #43179195



\* = SOD, CHB, DLF, IEF  
 \*\* = DOD, DLF, HYF, IEF

KB L1 DOMINO 521R CHB, DLF, HYF, IEF  
**KB L1 DOMINO 844U**  
 KB DOMINETTE 353N ET DLF, HYF, IEF

RCH ADVANCE 2139 DLF, IEF  
**KB L1 DOMINETTE 592R**  
 KB AMY 393

CL 1 DOMINO 3138N 1ET CHB  
 MONTANA MISS 310 DOD  
 JD BIG ARTHUR I80  
 CL 1 DOMINETTE 7188G  
 HH ADVANCE 965J  
 RB L1 DOMINETTE 8025 DLF, IEF  
 JNHR DIAMOND ET 414B SOD  
 KB L1 DOMINETTE 6131

- This pigmented, short marked 844 son is a top performer. He is a very long patterned bull with a deep side and good width and thickness of body. His performance and maternal strength could help a lot of black cows.
- Ranks in the top 5% for YW, Milk and M&G; top 10% for WW.
- Dam, 592, is a massive, very broody Bruce Anderson, ND, cow that is very deep. She had a top 521 daughter in the herd that Bruce retained.



**• DAM OF LOT 81 •  
MONTANA MISS 762U**

**LOT  
83**

BW..... 6.6  
 WW..... 65  
 YW..... 104  
 Milk.... 32  
 M&G... 65  
 REA... .23  
 Marb... .11  
 CHB... \$30

Act BW..... 94  
 9-14 Wt.... 605  
 Adj. 205.... 737  
 WDA..... 3.81

**KB L1 DOMINO 1194Y**

4/8/11 • #43179370



\* = SOD, CHB, DLF, IEF  
 \*\* = DOD, DLF, HYF, IEF

KB L1 DOMINO 521R CHB, DLF, HYF, IEF  
**KB L1 DOMINO 844U**  
 KB DOMINETTE 353N ET DLF, HYF, IEF

JA L1 DOMINO 6002S  
**MONTANA MISS 8130U**  
 MONTANA MISS 637 ET DLF, IEF

CL 1 DOMINO 3138N 1ET CHB  
 MONTANA MISS 310 DOD  
 JD BIG ARTHUR I80  
 CL 1 DOMINETTE 7188G  
 GB L1 DOMINO 935C CHB, DLF, IEF  
 JA L1 DOMINETTE 9203  
 CL 1 DOMINO 3162N CHB, DLF, IEF  
 HH MS ADVANCE 5048E

- A very long bodied, growthy 844 son that has a lot of future. He is a smooth fronted, deep ribbed, performance bull with power EPD's and a top cow family.
- Ranks in the top 1% of the breed for WW, YW, Milk and M&G.
- Dam, 8130, is a big, long, deep made 6002 daughter that was one of our top performers as a yearling. She has strong EPD's, a great cow family and was sold to Climbin' Tree Ranch in CO. Her first calf sold to J.D. Anderson in SD. 8130 has a 105 WR.



**• DAM OF LOT 83 •  
MONTANA MISS 8130U**

**LOT  
84**

BW..... 2.8  
 WW..... 54  
 YW..... 83  
 Milk..... 25  
 M&G... 52  
 REA... .03  
 Marb... .10  
 CHB... \$23

Act BW..... 87  
 9-14 Wt..... 575  
 Adj. 205... 669  
 WDA..... 3.64

**KB L1 DOMINO 1197Y**

4/9/11 • #43179348



\* = SOD, CHB, DLF, IEF  
 \*\* = DOD, DLF, HYF, IEF

CL 1 DOMINO 590R CHB, DLF, IEF  
**CL 1 DOMINO 7110T** CHB  
 CL 1 DOMINETTE 332N DOD

KB L1 DOMINO 215  
**MONTANA MISS 5132R**  
 MONTANA MISS 345

CL 1 DOMINO 246M SOD, DLF, IEF  
 CL 1 DOMINETTE 258M  
 CL 1 DOMINO 9126J 1ET \*  
 CL 1 DOMINETTE 875H  
 HH ADVANCE 0072K DLF, IEF  
 KB L1 DOMINETTE 048  
 CL 1 DOMINO 501 SOD, DLF, HYF, IEF  
 MONTANA MISS J042 DOD

- A growthy, very smooth fronted 7110 son whose length of body catches your eye. This straight lined, high volume bull has very balanced EPD's. 1197Y is a short marked, stylish growthy bull with the herd bull look.
- Ranks in the top 10% of the breed for WW, Milk and M&G.
- Dam, 5132, is a very long sided, feminine made, excellent milking Fisher cow. She has a 104 WR and daughters have gone to Throckmole Herefords of CO and Chancy Hales of WY.

**LOT 84 • KB L1 DOMINO 1197Y****LOT  
85**

BW..... 4.7  
 WW..... 51  
 YW..... 82  
 Milk..... 27  
 M&G... 52  
 REA... .16  
 Marb... .10  
 CHB... \$25

Act BW..... 93  
 9-14 Wt..... 575  
 Adj. 205... 693  
 WDA..... 3.73

**KB L1 DOMINO 1198Y**

4/13/11 • #43179264



\* = SOD, CHB, DLF, IEF  
 \*\* = DOD, DLF, HYF, IEF

CL 1 DOMINO 206M  
**HH ADVANCE 6001S**  
 HH MISS ADVANCE 1088L DOD, DLF, IEF

CL 1 DOMINO 417P CHB, DLF, IEF  
**KB L1 DOMINETTE 756T**  
 KB L1 DOMINETTE 448P DLF, IEF

CL 1 DOMINO 9126J 1ET \*  
 CL 1 DOMINETTE 825H \*\*  
 CL 1 DOMINO 824H SOD, DLF, IEF  
 HH MS ADVANCE 8016H  
 CL 1 DOMINO 212M \*  
 CL 1 DOMINETTE 0112K 1ET  
 KB STOCKMAN 903 CHB  
 KB L1 DOMINETTE 639

- A light colored, very long made, correct structured 6001 son that is clean made with a tight sheath. He is a framey, growthy, top performing bull that strides with a long step.
- Ranks in the top 5% for Milk and M&G, top 20% for WW and YW.
- Dam, 756, is a feminine, long made 417 daughter that is smooth bodied. She has a son working for Orwick Ranch in SD. Her dam, 448, was a top producer that is also grandam of Lot 76.

**LOT 85 • KB L1 DOMINO 1198Y****ART HANDEL****MARVIN FISHER & KEN BAKER**

# Baker's Semen Spectacular

## Semen Still Available

Breeder	Reg. #	Sire	Breeder	Reg. #	Sire
<b>Baker Hereford Ranch</b>	17506045	KB L1 DOMINO 7212	<b>Holden</b>	17908060	HH ADVANCE M066
	17760182	KB L1 DOMINO 907		18105017	HH ADVANCE N179
	18581525	KB L1 DOMINO 4015		18923663	HH ADVANCE 872X
	18686023	L1 DAKOTA DOM J558		19114154	HH ADVANCE 011Z
	19160603	KB L1 DOMINO J0126		19114167	HH ADVANCE 025Z
	19376068	KB L1 DOMINO 345		19198297	HH ADVANCE 185A
	19426927	L1 DOMINO 457 1ET		19356163	HH ADVANCE 311C {SOD}
	19495072	KB L1 DOMINO 4125		19432238	HH ADVANCE 403D 3ET
	19498823	KB L1 DOMINO 519		19432255	HH ADVANCE 420D
	40042923	KB L1 DOMINO 737		19432324	HH ADVANCE 492D {SOD,DLF,IEF}
	41036429	DBH L1 DOMINO 849		19501529	HH ADVANCE 572E
	41166287	KB STOCKMAN 903 {CHB}		19562204	HH ADVANCE 671F 1ET {CHB}
	42005745	KB L1 DOMINO 9225		19562271	HH ADVANCE 6046F
	42215446	KB L1 DOMINO 101 {SOD,CHB}		40007336	HH ADVANCE 7038G {SOD}
	42215449	KB L1 DOMINO 116 {CHB,DLF,IEF}		40007341	HH ADVANCE 7046G {DLF,IEF}
	42215429	KB L1 DOMINO 1102		42050125	HH ADVANCE 026K 1ET {CHB,DLF,IEF}
	42252819	KB L1 DOMINO 218 {CHB,DLF,IEF}		42050638	HH ADVANCE 0072K {DLF,IEF}
	42372129	KB L1 DOMINO 311 {CHB,DLF,IEF}		42281268	HH ADVANCE 2107M {DLF,IEF}
	42368666	KB L1 DOMINO 399 ET		42673990	HH ADVANCE 6001S
	42523475	KB L1 DOMINO 450P {CHB,DLF,IEF}		42897091	HH ADVANCE 8086U {DLF,IEF}
	42523485	KB L1 DOMINO 454P {DLF,IEF}		42999314	HH ADVANCE 9027W {DLF,HYF,IEF}
	42570394	KB L1 DOMINO 502R {DLF,IEF}	<b>Mark Dominos</b>	17701298	JD BIG ARTHUR I80
	42570424	KB L1 DOMINO 509R		18829247	DAKOTA MARK 6331
	42570382	KB L1 DOMINO 521R {CHB,DLF,HYF,IEF}		19050702	OXH MRK DOM 9091 1ET
	42674348	KB L1 DOMINO 632 {CHB,DLF,IEF}		19494455	JH MARK 9454 1ET
	42687708	KB L1 DOMINO 641	<b>Canadian</b>	18274678	93J STANDARD AGA128M
	42736763	KB L1 DOMINO 655 ET {CHB,DLF,IEF}		18442159	STANDRD CITATION 17P
	42785079	KB L1 DOMINO 724T		41140447	LLL 77Y STD DOM 82B
	42784630	KB L1 DOMINO 732T		41089053	JNHR DIAMOND ET 414B {SOD}
	42878538	KB L1 DOMINO 826U		41123437	HR ROBIN HOOD 52F {SOD,DLF,IEF}
	43002949	KB L1 DOMINO 9129W {DLF,HYF,IEF}		42201364	SNS 47G SILVER DANDY 11J
<b>Miles City L1</b>	16138142	L1 DOMINO 72549		42129756	BAR-N CENTURION 921J
	16410912	L1 CL3 DOMINO 73197		42152769	KB CENTURION 179
	16907734	L1 DOMINO 75827		42252911	KB ROBIN DOMINO 266
	17364030	L1 DOMINO 77618		42363986	KB CENTURION 388
	17364044	L1 DOMINO 77707	<b>Other Breeders</b>		
	17558088	L1 DOMINO 78657	Imig	42113076	IH 2110 DOMINO 0453
	19048253	L1 DOMINO 890395	Jamison	19396831	L1 DOMINO 3704 1ET {CHB}
	19140967	L1 DOMINO 900154		19396807	JA L1 DOMINO 3565
<b>Cooper</b>	16902627	CH DOMINO 560	JBN & Baker	42238123	Arrow CL1 Domino 1127
	18110145	CL 1 DOMINO 1046 {SOD}	Lone Star Hereford Ranch	18511459	STAR DOMINO 288 ET {SOD}
	18655648	CL 1 DOMINO 501 {SOD,DLF,HYF,IEF}			
	18655729	CL 1 DOMINO 590 {SOD}	Lund Hereford Ranch	16324950	LHR L1 DOMINO 337
	18755044	CL 1 DOMINO 696		17084846	LHR L1 DOMINO 7611
	18833621	CL 1 DOMINO 790 2ET	Meitler	19142985	L1 GENVIR 023
	19354811	CL 1 DOMINO 392 {SOD,DLF,IEF}	Pedretti	19448907	GB L1 DOMINO 451 {SOD,CHB}
	19427613	CL 1 DOMINO 4117 1ET		19547719	GB L1 DOMINO 5129 {CHB}
	42044495	CL 1 DOMINO 0152K {DLF,IEF}	Rock Creek Herefords		
	42385245	CL 1 DOMINO 3113N {DLF,IEF}		42271454	RCH ADVANCE 2139 {DLF,IEF}
	42385269	CL 1 DOMINO 3138N 1ET {CHB}	Ron Baker	17790002	RB L1 901 DOMINO 970
	42482367	CL 1 DOMINO 417P {CHB,DLF,IEF}	Ryel	18657214	114 DOMINO AMR1 4ET {SOD}
	42482384	CL 1 DOMINO 419P {DLF,IEF}	Schmidt Herefords, Inc.	18526142	MILES DOMINO RS8335
	42673573	CL 1 DOMINO 638S {DLF,IEF}			SH ADVANCER 409 {SOD}
	42673580	CL 1 DOMINO 648S {CHB,DLF,IEF}	Scott Holden	18590823	
	42788406	CL 1 DOMINO 795T 1ET {CHB}	West Central Florida		
	42788256	CL 1 DOMINO 7113T		17921269	WCF L1 DOMINO 0238



**We would like to thank all of you for your past visits and support.  
You make our business what it is and we appreciate you.  
*Thanks to our past year's buyers...***

Behm Hereford Ranch, ND  
Bates Creek Ranch, WY  
Helbling Hereford Ranch, ND  
Trask Ranch, SD  
Wade A. Manner, WY  
D.R. Whitaker Ranch, WY  
Nisselius Ranch, WY  
Holso Ranch, SD  
Art Kirk, SD  
Putnam & Putnam, LLP, SD  
Trzruc Ranch, ND  
Marty Ranch, SD  
LEL Hereford Ranch, SD  
Garrett Ranch, SD  
Tenold Ranch, SD  
Tom Wolf, WY  
Wyatt Mollman, SD  
Olinger Ranch, SD  
Orwick Ranch, SD  
Marvin Fisher, IA  
Brickman Ranch, SD  
Bruce Forney Ranch, NE  
Pat Flaherty, ND  
Steve Soelzer Ranch, SD  
Joe Dolezal, NE  
Jerry Nelson, SD  
Dustin Smith, SD  
Chad Hanson, SD  
Mike Gilbertz, SD  
Loren Booth, SD  
Lee Hales, WY  
Chancy Hales, WY  
Uttecht Farms, SD

Kelvin Poppen, SD  
Bob Herman, SD  
Mort Stuart, WY  
Clayton Sander, SD  
Jon Jonas, SD  
J.D. Anderson, SD  
Tim Anderson, SD  
Brett Miller, NE  
Philip Rogers, MN  
Rothrock Herefords, CO  
James Agnew, GA  
John Sullivan Ranch, WY  
Ron Struempler Ranch, WY  
Gorzalka Ranch, WY  
Ron Viken, NE  
4V Ranch, KS  
Bruce Anderson, ND  
J.D. Anderson, SD  
B & D Herefords, KS  
Belfy Herefords, MN  
Blair Blaser, IL  
Boehnke Herefords, ND  
Jonathon Brown, ND  
Rodney Brown, ND  
Jason Burma, SD  
Burns Farms, TN  
Lewis Byers, IA  
Carmichael Ranch, SD  
Carr Herefords, NE  
Carswell-Nichols Herefords, KS  
Jack Chastain, TX  
Climbin' Tree Ranch, CO  
Cline Herefords, CO

Coon Herefords, KS  
Cooper Hereford Ranch, MT  
Barbara Dedic, SD  
Deer Creek Herefords, MN  
Loren Duchsherer, ND  
Dufur Herefords, OK  
Dvorak Herefords, SD  
Bobby Edgar, TX  
Ekker Herefords, UT  
Fawcett's Elm Creek Ranch, SD  
Flath Herefords, ND  
Flory Polled Hereford, KS  
Friedt Herefords, ND  
Ft. Keogh Research Station, MT  
Giedd Hereford Ranch, ND  
Bill Goehring, IA  
Clint & Julie Goodman, SD  
Granzow Herefords, KS  
Bee Gribble, NE  
Mark Haueter, OR  
Hillsview Ranch, SD  
Holden Herefords, MT  
Hula Herefords, NE  
Johansen Herefords, UT  
Larry Karrh, TX  
Knippling Bros. Ranch, SD  
Loehr Hereford Farms, IL  
Dwight Logterman, NE  
M&M Herefords, MO  
Sam Marty, SD  
Gene Meitler, KS  
Middleswarth Ranch, WY  
Jon Miller, KS

Mill Iron Ranch, MT  
Milligan Hereford Farms, IL  
John Molstad, ND  
Nelson Polled Herefords, MN  
Dale Neu, SD  
Philip Ohlwine, IL  
David Olson, SD  
Andrew Paquette, IL  
Michael Perez, NM  
Dennis Quivey, SD  
Raap Herefords, SD  
Rafter T Herefords, ND  
Ravine Creek Ranch, SD  
Roe Herefords, ID  
Sachtjen Herefords, NE  
Sand Rock Ranch, WI  
Sidwell Herefords, CO  
Don Sonsalla, ND  
S-W Ranch, TX  
Larry Stangle, NE  
Brad Stuart, TX  
Stuber Ranch, ND  
Stutheit Herefords, NE  
TKR Herefords, NE  
Tonne Cattle Co., WA  
Vulture Acres, ND  
M&M Herefords, MO  
WD Herefords, TX  
Shawn & Sarah Weishaar, SD  
Whispering Pine Farms, MN  
Justin Wichman, MT  
Todd Woods, SD  
Zens Herefords, SD



## Terms & Conditions

**Date:** Saturday, February 11, 2012

**Time:** 1 p.m. (MST)

**Location:** At the ranch

**Lunch:**

Available on the grounds, provided by Bakers

**Phones:**

Jeff, at the ranch, 605/923-5632;  
Jim, 605/923-2925.

**Sale Day Phone:**

605/923-5632, 605/381-2444, 605/381-9519

**Accommodations:**

Rapid City has several good motels. We have negotiated a good rate at the Ramkota Inn at I-90 and LaCrosse St. We invite you to be our guests the evening of February 10th for a meal and social. If you need help with any accommodations please feel free to call any of the Bakers.

**Transportation:**

Rapid City Regional Airport is served by American, Delta, Northwest and United Airlines. Call in advance if you need transportation to the sale.

**Terms and Conditions:**

Terms of the sale are cash. Every animal will be sold to the highest bidder with the auctioneer settling any disputes as to bids. Announced

changes in catalog information sale day will take precedence over printed material in this catalog. All cattle are the buyer's property as soon as sold and will be cared for a reasonable length of time at the buyer's risk. We highly recommend that you insure your purchases. Any person attending the sale does so at his own risk. Neither owners nor any person connected with this sale, assumes any liability, legal or otherwise.

**Guarantee:**

All animals in the sale are guaranteed breeders. If an animal fails to breed after a trial of six months, it may be returned to the seller in good condition and in compliance with the health regulations of South Dakota. The seller reserves the right to try said animal for six months, and if it proves a breeder, to return it to the buyer at the buyer's expense. If the animal proves to be a non-breeder, an animal of comparable ranking from the next calf crop will be substituted. Baker Herefords assume no other liability, legal or otherwise, to make any further compensation to the buyer should an animal purchased in this sale be a non-breeder. No other warranty of any nature is expressed or implied.

**Health:**

Our herd is accredited for brucellosis, tuberculosis and anaplasmosis. Individual health papers will be furnished on each lot. Annual vaccination for blackleg, malignant edema, the clostridium spectrum, leptospirosis, parainfluenza, BVD, homophilii, pasturella and IBR has been followed. The health of this herd is excellent and we have guarded our herd's health over the past 65 years with every precaution and means available.

**Pedigree Examination:**

To the best of our knowledge and all available research, all the cattle in this sale have no dwarfism in their ancestry. We will guarantee every animal in this sale to pass a pedigree examination by the American Hereford Association, if such an examination is initiated within 30 days following the animal's purchase in this sale. Baker Herefords makes no warranty whatsoever, implied or otherwise, that any animal in the sale is free of dwarfism or any other undesirable genetic recessive genes.

**Registration and Transfer:**

Registration certificates will be transferred to buyers upon request at seller's expense. When making settlement, buyers must give complete written name and address information for making transfers.

**Insurance:**

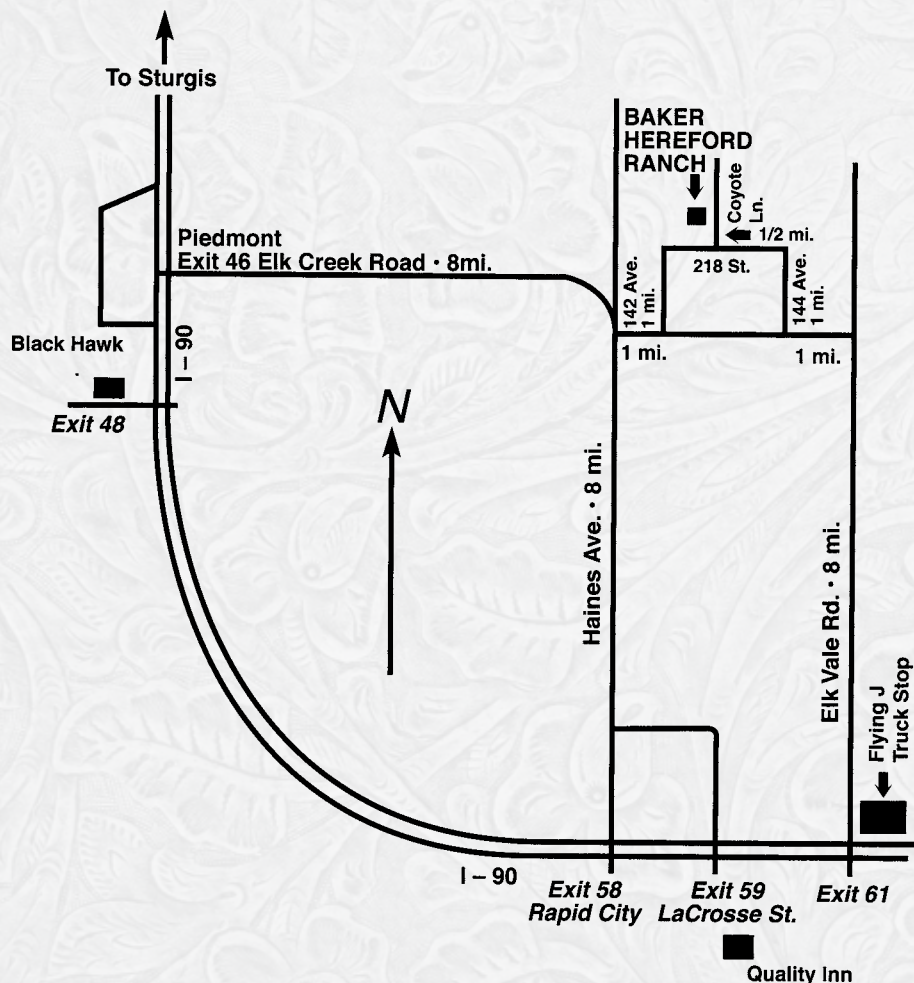
We highly recommend that if you want us to deliver your bulls or that you will be leaving them for any period of time after the sale that you insure them. Insurance can be arranged through Harding and Harding Livestock Insurance. Art Handel will be there to assist you with your insurance needs.

**Absentee Bids:**

Anyone wishing to bid who cannot attend the sale may place phone bids or mail bids by contacting any listed sale representative, Jeff Baker or Jim Baker.

**Free Delivery:**

Immediately after the sale on purchases that total \$5000 within 500 miles to central points.



# Notes

# MORE EFFICIENT MEANS MORE HEREFORD.

---

## HEREFORD — MAKING BLACK BETTER.

For efficiency and profitability, nothing gets you there faster than Hereford. Hereford characteristics, such as gain and feed conversion, show a \$78 advantage per head over Angus-sired calves from start to finish\*. Ideal for your herd and for the future of your business, adding Hereford gives you the power to become more profitable.

American Hereford Association  
P.O. Box 014059, Kansas City, MO 64101  
(816) 842-3757 • [www.hereford.org](http://www.hereford.org)



\*Preliminary findings from 2007 California State University study in cooperation with Lacey Livestock, Harris Feeding Co., and Harris Ranch Beef Co., "Impacts of Crossbreeding on Profitability in Vertically Coordinated Beef Industry Marketing Systems." Visit [Hereford.org](http://Hereford.org) and click on the "Heterosis Report" tab or contact Jack Ward, AHA chief operating officer at [jward@hereford.org](mailto:jward@hereford.org) for more information.

©2007 American Hereford Association.

**Baker Hereford Ranch**

PO Box 2769

Rapid City, SD 57709

**Address Service Requested**

Presorted  
Standard  
US Postage

**PAID**

PERMIT #618  
Rapid City SD

“*Good bulls* don't cost, *they pay*”



Lot 19



Lot 26



Lot 31