

Hereford Bulls  
on Black Cows  
add more profit to  
your bottom line.

# Stroh HEREFORDS Production Sale

THURSDAY  
FEBRUARY 2ND, 2012  
1:00 PM MST

STOCKMEN'S WEST - DICKINSON, ND

AUCTIONEER: SCOTT WEISHAAR

Videos at  
Hereford America  
[www.HerefordAmerica.com](http://www.HerefordAmerica.com)  
Go to site, select 'Services',  
then 'Livestock Videos'



OXH Diamond 2215

Selling:

60 Coming 2 Year Old Bulls

5 F1 Baldy Heifers

18 Bred Heifers

8 Open Hereford Heifer Calves



Stroh



# STROH HEREFORD

## *Welcomes You*

Welcome to our 22nd Annual Production Sale. It truly is an exhilarating time to be in the Hereford business. With the recent studies focusing on using Herford cattle in crossbreeding programs, we now have research-based evidence which documents the effectiveness of using Herefords, especially on Angus-based genetics. The fact is that the research has shown us that by using Herefords in your crossbreeding program, you decrease your expense while increasing your bottom line, which will give you more money in your pocket when you market your calves. In these challenging economic times, Hereford efficiency really pays off.

We are excited about this year's offering of two-year old bulls. This is a uniform set of bulls that are thick muscled; sound on their feet, and posse the trait of having excellent milk in their EPD's which means that their progeny will continue to grow until weaning time. They have been pasture raised and are cake broke and range ready to go to work for you on the challenging range conditions the upper mid-west has to offer.

Now let's talk about our cows. Although this is a bull sale, we know that behind every set of sound, uniform bulls there is a solid foundation of good producing cows. Over the years we have paid special attention to certain traits in our cow herd. Some of these traits would include:

- Good tight udders
- High milk production
- Pigment
- Fertility
- Gentle Disposition

And of course the most important in Dawn's opinion, calving ease (any rancher's daughter, son or wife who has had to hold the other end of the rope at 2:30 a.m. while a calf is being pulled will attest to this).

Again this year we would like to thank you; our friends, family, and customers for making this production sale possible. We are fully aware that without you and your continued support we would not have been in the business for as long as we have been...THANK YOU!

In closing, we invite you to have lunch with us the day of the sale. Should you have concerns, questions or comments, please do not hesitate to contact us. We also encourage you to come and see the animals prior to the sale day. We look forward to showing you the cattle and visiting with you before the sale. The coffee pot is always on, most of the time we have soda at the house, and of course if the kids or grandkids have not gotten into the package we usually have Oreos Cookies on hand!

As Always,

Tony & Leona Stroh  
10550 Hwy 200  
Killdeer, North Dakota 58640  
701-764-5217

Mike, Dawn, Lucas and Matthew Stroh  
1010 Hwy 22 South  
Killdeer, North Dakota 58604  
701-573-4373 or 701-290-1191 (Mikes Cell Phone)  
acmecatl@ndsupernet.com

### **TERMS & CONDITIONS**

All cattle will be sold to the highest bidder without reserve. The terms of the sale will be cash. The auctioneer will settle any dispute as to bids.

Each animal will become the property of the buyer as soon as sold. Cattle will be cared for a reasonable length of time after the sale, at the buyer's risk.

All bulls of breeding age are guaranteed breeders. If an animal fails to breed after a trial of six months, it may be returned to the seller at buyer's expense. The seller reserves the right to try said animal for six months and if it proves a breeder to return it to the station of buyer at seller's expense. If the animal proves to be a non-breeder, the purchase price will be refunded or an equal animal substituted. Request for adjustment must be made within six months from time of purchase.

Extreme care has been taken in copying each pedigree to avoid errors. We are not to be held responsible for any error which might appear and which is beyond our control in the printing of the catalog.

Everyone attending this sale does so at his own responsibility and risk, and without liability on the part of the owner or his employees.

*Stroh Hereford Ranch*

**We will cooperate with delivery arrangements  
or take \$50<sup>00</sup> (per bull) off  
if picked up on sale day (Bulls Only)**

**Purchases of \$3000 - or more (FREE DELIVERY)  
\*No Free Delivery on Heifers**

*Stroh*  
**HEREFORDS**

**Stockmen's West**

*(701) 225-8145*

**Scott Weishaar**

*Auctioneer*

*(701) 872-5299*

*Cell: (701) 426-6826*

**Jill & Marc Hotchkiss**

*(605) 866-4495*

*Jill Cell: (605)-490-1409*

*Marc Cell: (605)-490-1513*

**Western Livestock Reporter**

**Kirby Goettsch**

*(605)-380-3939*

**Tri-State Livestock News**

**Ross Glass**

*(701)-878-4001*

*Cell: (701)-290-4001*

**Rick Thompson**

*(701) 290-6839*

**Chad Stoltz**

*(701) 225-8145*



# PROJECT PROVES PROFITABILITY OF HEREFORD ANGUS CROSS

## **Birth Weight (BW)**

Birth weight is an indicator of calving ease. Larger BW EPDs usually, but not always, indicate more calving difficulty. The figure in parentheses found after each EPD is an accuracy value or reliability of the EPD. To learn more about how to use accuracy when evaluating EPDs please refer to the section "Accuracy and Confidence Range".

## **Weaning Weight (WW)**

WW EPD reflects pre-weaning growth.

## **Yearling Weight (YW)**

YW EPD reflects differences in the 365-day adjusted yearling weight for progeny. It is the best estimate of total growth.

## **Maternal Milk (MM)**

The milking ability of a sire's daughters expressed in lb. of calf weaned. It predicts the difference in average weaning weight of sires' daughters' progeny due to milking ability.

## **Maternal Milk & Growth (MG)**

Maternal Milk & Growth reflects what the sire is expected to transmit to his daughters for a combination of growth genetics through weaning and genetics for milking ability. It is an estimate of daughters' progeny weaning weight. It is equal to one-half the sire's weaning weight EPD, plus all of his milk EPD. No accuracy is associated with this since it is simply a mathematical combination of two other EPDs. Sometimes referred to as "total maternal" or "combined maternal."

## **Rib Fat (FAT)**

The FAT EPD reflects differences in adjusted 365-day, twelfth-rib fat thickness based on carcass measurements of harvested cattle. Sires with low, or negative, FAT EPDs are expected to produce leaner progeny than sires with higher EPDs.

Ultrasound measures are also incorporated into this trait and have been shown to be highly correlated with the performance of slaughter progeny. All data is expressed on a carcass scale.

## **Ribeye Area (REA)**

REA EPDs reflect differences in an adjusted 365-day ribeye area measures based on carcass measurements of harvested cattle. Sires with relatively higher REA EP are expected to produce better muscled and higher percentage yielding slaughter progeny than will sires with lower REA EPDs.

Ultrasound measures are also incorporated into this trait and have been shown to be highly correlated with the performance of slaughter progeny. All data is expressed on a carcass scale.

## **Marbling (MARB)**

MARB EPDs reflect differences in an adjusted 365-day marbling score (intramuscular fat) based on carcass measurements of harvested cattle. Breeding cattle with higher MARB EPDs should produce slaughter progeny with a higher degree of intramuscular fat and therefore higher quality grades. Ultrasound measures are also incorporated into this trait and have been shown to be highly correlated with the performance of slaughter progeny. All data is expressed on a carcass scale.

## **Baldy Maternal Index (BMI\$)**

A maternally focused index that has a production system based on 1,000 Hereford x Angus females with a progeny harvest endpoint directed toward CHB. This index is more critical of CE than the BII\$ and also has significant weight on fertility. There is positive weight on WW and a slightly negative weight on YW

which promotes early growth and then a slow down on growth to keep mature size manageable. The emphasis of IMF is greater than the emphasis of REA. This is true because of the price difference of the choice-select spread and the fact that there is very little incentive to produce cattle better than a yield grade 3. The question comes up concerning the fact that the CHB program has been successful because of the acceptance of Select grade cattle. In answer to this, we are using a cross-breeding production system that could sell cattle on several grids and the CHB program is installing a choice product. This index is geared to service any commercial program that runs British cross cows.

### **Calving Easy Index (CEZ\$)**

A general purpose index that focuses on identifying bulls that can be used on heifers and then ultimately the calves will be marketed through CHB. As you might expect, CE and MCE carries significant weight in this index along with fertility. There is very little weight put on growth traits and less emphasis on carcass. Remember, this is a general index that is specifically designed to be used in a heifer program.

### **Certified Hereford Beef Index (CHB\$)**

A terminal sire index that is built on a production system where Hereford bulls sire calves for the CHB market. There is some pressure put on CE and then positive weight on both WW and YW. Remember that all offspring in this index are harvested, so they need to be born alive and then grow fast at all stages of life. Of course, we have much more emphasis on fat in this index, as we want the cattle to stay lean. There is also a significant weight on both REA and IMF with more emphasis again on IMF. This index would be used by producers who have a target of producing bulls for a terminal breeding program. This index could be used heavily in the Midwest where bulls are used in rotational breeding programs to produce cattle in a retained ownership program or simply sold to backgrounders. This is the only index that has no emphasis on fertility. Remember that nothing is retained in the herd.

**Thank You  
FOR ATTENDING  
OUR SALE**



# HERD BULLS

Ref. Sire

**A**

## OXH DIAMOND 2215

Calved 4/16/2002 • Tattoo RE 2215 • Reg #: 42302378

BEL L DIAMOND 127 ET..... SNS Generator 28X  
**JNHR DIAMOND ET 4148**..... Bell L Miss Britisher 2N  
 CH AP AMY 41Y..... IMR All Pro 5ET  
 OXH MARK DOMINO 5158..... OXH Mark Domino 8020  
**OXH LILA 8124**..... OXH Cara 3020  
 OXH SARA 4130..... F Spectre 143  
 OXH Lona 0023

BW EPD	5.0
WW EPD	49
YW EPD	70
Milk EPD	+30
M&G	+54

Fat	REA	IMF	BMI	CEZ	CHB
-0.004	+0.35	-0.17	\$9	\$13	\$18



**OXH DIAMOND 2215**

Ref. Sire

**B**

## MH DAKOTA LAD 3164

Calved 4/01/2003 • Tattoo 3164 • Reg #: 42403649

SR LAD 447..... Upstream Lad 1082  
**MH DAKOTA 0230**..... SR Kara 871  
 JV ANGEL 684..... JV General 418  
 WT 90 DOMINO 065..... VR Miss Domett D98  
**MISS 065 DOMNET 611 DOD**..... CL 1 Domino 590  
 MH MISS SPECTRE 448..... WT Miss Energy 813  
 F 003 Spectre 297  
 MH Miss Domino 0166

BW EPD	3.4
WW EPD	37
YW EPD	62
Milk EPD	23
M&G	42

Fat	REA	IMF	BMI	CEZ	CHB
+0.055	-0.18	+0.06	\$12	\$12	\$12



**MH DAKOTA LAD 3164**

Ref. Sire

**C****BLL RED ADDITION 175T**

Reg #: P42808910

PAHL 36H LIMITED EDITION 62L ..... LRD Red Homeboy 36H  
**SH RED EDITION 06N** ..... Pahl 116C Gina 53G  
 SH MISS DIAMOND 950 ..... JNHR 414 Diamnd 164D  
 ..... SH Miss Flash 136

XTC 27TH SUNSHINE LAD 58K ..... XTC Sunshine Tempest 27H  
**LADY 58K DIAMND 106P** ..... XTC 13U Jasmine 31G  
 BLL LADY DIA 50L ..... JNHR 414 Diamnd 164D  
 ..... Lady Brigadeer 22G

BW EPD	4.6
WW EPD	49
YW EPD	81
Milk EPD	+17
M&G	+42

Fat	REA	IMF	BMI	CEZ	CHB
+0.003	+0.39	-0.05	\$17	\$12	\$20

**BLL RED ADDITION 175T**

Ref. Sire

**D****KB L1 DOMINO 563R**

Calved 2/05/2005 • Tattoo 563 • Reg #: 42570550

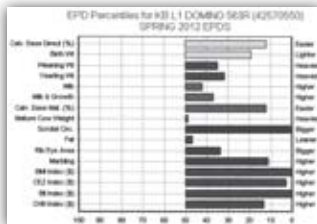
HH ADVANCE 965J ..... CL 1 Domino 6103F  
**RCH ADVANCE 2139** ..... HH Miss Advance 739G DOD  
 RB L1 DOMINETTE 8025 ..... RB L1 Domino 5112  
 ..... RB L1 Dominette 6108

ORE 4411 MRK 7078 1ET ..... NX Mark Class 4411  
**HH MISS ORE MARK K710** ..... L Star Donna 17L 1ET  
 HH MISS ANDREW 6279 DOD ..... OXH Anthony 0133  
 ..... HH Miss Breaker 0991

BW EPD	3.1
WW EPD	49
YW EPD	81
Milk EPD	19
M&G	44

Fat	REA	IMF	BMI	CEZ	CHB
-0.001	+0.33	+0.17	\$28	\$20	\$26

We regret to say we no longer use this bull as we lost him. He has done us a lot of good in our herd. Her sired several bulls in this offering, that have a lot of great traits with great numbers as you will see when you study this catalog.





Ref. Sire

**E**

**KB L1 DOMINO 826U**

Calved 1/18/2008 • Tattoo 826 • Reg #: 42878538

LPG BONANZA 52G ..... CTY Extra 335C  
**F BONANZA 027** ..... LPG 8080 Volt Lass 22C  
 F MS MONTANA 454 1ET ..... F Mr Power 137  
 ..... F Ms Spectre 200 1ET

CL 1 DOMINO 9149 ..... SH Advancer 729  
**SH MISS DOMINO 808** ..... C L1 Ida 6003  
 LADY DUKE 2073 ..... SH Duke 016  
 ..... Miss Domino 7074

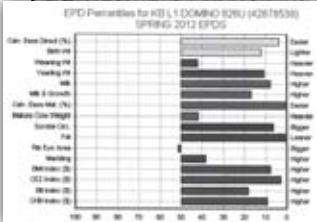
BW EPD	1.5
WW EPD	47
YW EPD	90
Milk EPD	26
M&G	49

Fat	REA	IMF	BMI	CEZ	CHB
-0.045	+0.24	+0.06	\$22	\$20	\$27

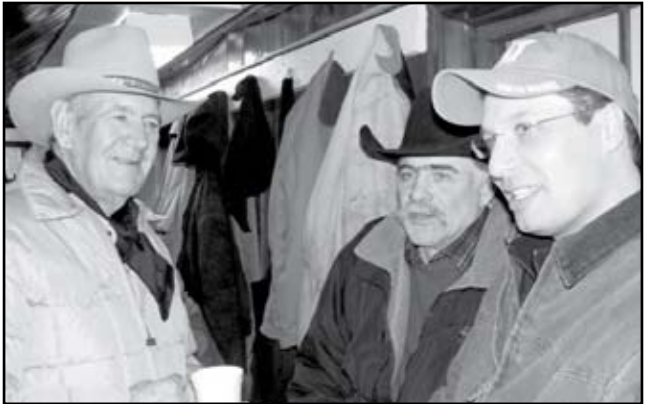
We are pleased to offer several sons from KB L1 Domino 826U. This bull is co-owned with Baker Herefords out of SD. This bull possesses outstanding EPD's and calving ease.



**KB L1 DOMINO 826U**



PLEASE JOIN US FOR A  
**FREE LUNCH!**



Ref. Sire

**F****KB L1 DOMINO 567R**

Calved 2/7/2005 • Tattoo 567 • Reg #: 42570340

KB L1 DOMINO 503 2ET .....	GB L1 Domino 804
<b>KB L1 DOMINO 567R</b>	SH Miss Advancer 267
KB L1 DOMINETTE 513.....	HH Advance 311C
	SH Miss Advance 721
CL 1 DOMINO 392 .....	CL 1 Domino 9020
<b>KB L1 DOMINETTE 0111</b>	CL 1 Dominette 7012
HH MS ADVANCE 2019B.....	CL 1 Domino 880 2 ET
	HH Miss Advance 851X

BW EPD	+2.7
WW EPD	+45
YW EPD	+76
Milk EPD	+12
M&G	+34

Fat	REA	IMF	BMI	CEZ	CHB
-0.025	+0.38	-0.06	\$21	\$15	\$20

Ref. Sire

**G****CHURCHILL RANCHER 8108U ET**

Calved 1/17/2008 • Tattoo 8108 • Reg #: 42884833

MH DAKOTA 0230.....	SR Lad 447
<b>CHURCHILL RANCHER 592R</b>	JV Angel 684
CHURCHILL LADY 202.....	HH Advance 767G 1ET
	Churchill Lady 0113
CL 1 DOMINO 9126J 1ET .....	HH Advance 767G 1ET
<b>CL 1 DOMINETTE 301N</b>	CL 1 Dominette 490
CL 1 DOMINETTE 8184H .....	CL 1 Domino 522E
	CL 1 Dominette 359

BW EPD	3.4
WW EPD	57
YW EPD	90
Milk EPD	26
M&G	55

Fat	REA	IMF	BMI	CEZ	CHB
+0.025	+0.23	+0.29	\$23	\$15	\$30

This will be the first year we are offering bulls by this bull. We are very pleased with his progeny. He's throwing great quality cattle for us. The bulls have a lot of thickness with smooth muscling and great eye appeal. The females are very feminine, we will calve out his first heifers this coming spring. We are very excited to see how they do.

**CHURCHILL RANCHER 8108 UET****AI SIRE****UPS DOMINO 3027**

Calved 3/08/2003 • Tattoo 3027 • Reg #: 42426386

HH ADVANCE 767G 1 ET .....	CL 1 Domino 500E
<b>CL 1 DOMINO 9126J ST</b>	HH Miss Advance 251B
CL 1 DOMINETTE 490.....	CL1 Domino 166
	CL 1 Dominette 130
SH DIAMOND 881.....	JNHR 414 Diamnd 164D
<b>UPS MISS DIAMOND 1353</b>	SH Red Miss 436
UPS MS MILEHIGH 8330 .....	C MR High 96106 4ET
	UPS MS Red Fork 5537

BW EPD	-1.4
WW EPD	+48
YW EPD	+78
Milk EPD	+35
M&G	+59

Fat	REA	IMF	BMI	CEZ	CHB
+0.007	+0.40	+0.32	\$24	\$24	\$31

# EPDS FOR 2010 BORN CALVES

## Breed Averages

CED	BW	WW	YW	Milk	M&G	CEM
.4	3.6	44	73	17	39	0.9

The Hereford Indexes are:

### ***Baldy Maternal Index (BMI\$)***

An index to maximize profit for commercial cow-calf producers who use Hereford bulls in rotational crossbreeding programs on Angus-based cows and heifers. Retained ownership of calves through the feedlot phase of production is assumed, with fed cattle marketed on a Certified Hereford Beef (CHB) LLC pricing grid.

### ***Certified Hereford Beef Index (CHB\$)***

A terminal sire index, where Hereford bulls are mated to British-cross cows and all offspring are sold as fed cattle on a CHB LLC pricing grid.

### ***Calving EZ Index (CEZ\$)***

This index is similar to BMI\$, except that Hereford bulls are mated only to yearling heifers. This index has increased emphasis on direct and maternal calving ease compared with the other indexes.

The index values for each animal result from multiplying each of the animals EPDs by the relative economic value of a one-unit increase in that trait under each scenario. The economic weightings were developed by Michael MacNeil, research geneticist with the USDA Agricultural Research Service in Miles City, Montana.

## JUNIOR HERD SIRE

Ref. Sire

**H**

### DS RENDITION 359W

Calved 03/22/09 • Tattoo 359 • Reg #: 43017500

GH Neon 17N..... GH Difference Britisher 45L  
**CHURCHILL YANKEE ET**..... GH Sir Simba Lass 107K  
 Churchill Lady 202..... HH Advance 767G 1ET  
 Churchill Lady 0113  
 BP 146D Sandman 46H..... BP Sandman 146D  
**DS SHANA 557**..... BP Commander Lady 128Y  
 OXH Patti 8153..... BB Patriot 0293  
 OXH Candi 3050

BW EPD	+3.3
WW EPD	+50
YW EPD	+76
Milk EPD	+16
M&G	+41

Fat	REA	IMF	BMI	CEZ	CHB
+0.22	+.28	+.32	\$18	\$15	\$27

Ref. Sire

**I****F FORESIGHT 935**

Reg #: 42977947

Standard 16E Ribstone 64H..... Standard Ribstone 16E  
**K 64H RIBSTONE LAD 157K** Standard Lass 23E  
 K 61Z Super Lady 41G..... SNS Super Pace ET 61Z  
 K 58X Master Lady 89Z  
 HH Advance 767G 1 ET ..... CL1 Domino 500E  
**F 767 DOMINETTE 413** HH Miss Advance 251B  
 F MS Bonanza 246..... LPG Bonanza 52G  
 F MS 9322 Domino 851

BW EPD	3.6
WW EPD	58
YW EPD	105
Milk EPD	34
M&G	63

Fat	REA	IMF	BMI	CEZ	CHB
0.00	.32	.30	\$25	\$19	\$35

• Jointly owned with Feddes Herefords.

Ref. Sire

**J****R 157K NORTH STAR 50W**

Reg #: 43001920

Standard 16E Ribstone 64H..... Standard Ribstone 16E  
**K 64H RIBSTONE LAD 157K** Standard Lass 23E  
 K 61Z Super Lady 41G..... SNS Super Pace ET 61Z  
 K 58X Master Lady 89Z  
 AGA 10S Stand 137Y ..... SJSL HI 20 S Lad 10S  
**R STARLETTE 410** GU Miss 46E Brit 10K  
 R Starlette 235..... C Home Brew 60H  
 R L1 Lass 215

BW EPD	3.5
WW EPD	51
YW EPD	84
Milk EPD	31
M&G	56

Fat	REA	IMF	BMI	CEZ	CHB
-.01	.49	.17	\$24	\$19	\$29

• Jointly owned with Ridder Herefords.

Ref. Sire

**K****UU HARLEY 9130**

Reg #: 42984917

CJH HARLAND 408 ..... HH Advance 9005J  
**H5 408 DOMINO 7100** CJH L1 Dominette 0064  
 H5 MS 001 DOMET 4193..... H5 501 Domino 001  
 H5 MS 767 Advanc 2124  
 H5 767 ADVANCE 056 ..... HH Advance 767G 1ET  
**UU MS 056 7115** H5 MS 338 Domet 5196  
 UU MS MARK 1207..... OXH Mark Adv 7364  
 UU MS 660 9031

BW EPD	3.3
WW EPD	52
YW EPD	91
Milk EPD	30
M&G	56

Fat	REA	IMF	BMI	CEZ	CHB
+0.062	+0.17	+0.20	\$23	\$18	\$24

Ref. Sire

**L****SR NAVARRO 150X**

Reg #: 43105336

UPS DOMINO 5216 ..... UPS Domino 3027  
**UPS NAVARRO** UPS Miss Mom 2756  
 UPS MISS DOMINO 5875..... JA L1 Domino 2228M  
 UPS Miss Knight 3910  
 IHM 821 DOMINO 1598 ..... CJH L1 Domino 821  
**SR CAPTIA 661** IHM 2110 Domineta 9585  
 SR SHANA 1109..... BP 146D Sandman 46H  
 BB MS Red Stan 6272

BW EPD	4.2
WW EPD	50
YW EPD	99
Milk EPD	25
M&G	49

Fat	REA	IMF	BMI	CEZ	CHB
+0.039	+0.47	+0.26	\$18	\$14	\$28

Ref. Sire

**M**

# SR NAVARRO 140X

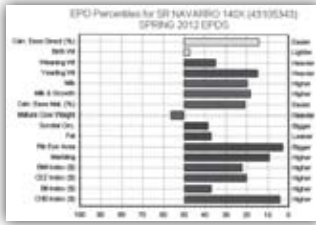
Reg #: 43105343

UPS DOMINO 5216 ..... UPS Domino 3027  
**UPS NAVARRO** ..... UPS Miss Mom 2756  
 UPS MISS DOMINO 5875..... JA L1 Domino 2228M  
 ..... UPS Miss Knight 3910

BB 1065 DOMINO 4102 ..... BB 9131 Domino 1065  
**SR VALORIE 684** ..... ORE Claudia 8047 1ET  
 SH SHANA 4111 ..... BP 146D Sandman 46H  
 ..... SR Yampette 706

BW EPD	3.5
WW EPD	49
YW EPD	89
Milk EPD	23
M&G	48

Fat	REA	IMF	BMI	CEZ	CHB
-0.005	+0.63	+0.19	\$19	\$17	\$29



# COMING 2 YEAR OLDS

## LOT 1 SHR DOMINO 09

Calved 4/05/10 • Tattoo 09 • Horned Bull

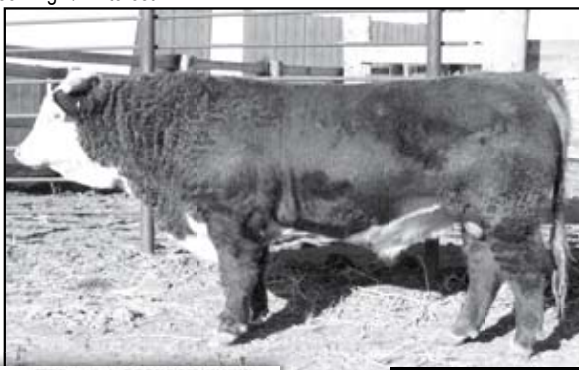
CL1 Domino 9126J 1 ET ..... HH Advance 767G 1ET  
**UPS DOMINO 3027** ..... CL 1 Dominette 490  
 UPS Miss Diamond 1353 ..... SH Diamond 881  
 ..... UPS MS Milehigh 8330

SH Bonanza 5007 ..... F Bonanza 027  
**MISS BONANZA 812** ..... SH Miss Domino 808  
 Lady Domino 380 ..... KB L1 Domino 661  
 ..... SH Lady Special 964

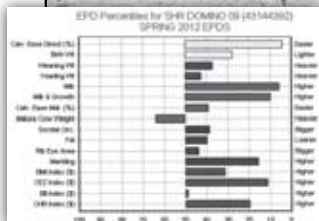
Fat	REA	IMF	BMI	CEZ	CHB
-0.004	+0.28	+0.14	\$18	\$18	\$25

Act BW	88
205 Day Wt	799
365 Day Wt	1052
BW EPD	2.6
WW EPD	48
YW EPD	77
Milk EPD	27
M&G	51

\* This 3027 son is a solid marked bull who steps out sound and walks balanced. He has a well defined hind quarter and a set of desirable EPD's straight across. This calving ease bull is as impressive in person as he is on paper. Stroh Hereford Ranch is reserving 1/4 interest.



**SHR DOMINO 09**



## LOT 2 SHR RANCHER 36

Calved 4/15/10 • Tattoo 36 • Horned Bull

Churchill Rancher 592R ..... MH Dakota 0230  
**CHURCHILL RANCHER 8108 U ET** ..... Churchill Lady 202  
 CL 1 Dominette 301N ..... CL 1 Domino 9126J 1 ET  
 ..... CL 1 Dominette 8184H

Go Excel L18 ..... DD Excel Design 40  
**MISS EXCEL 614** ..... GO MS 124 Advance 7005  
 Miss Explorer 109 ..... F Explorer 953  
 ..... SH Miss Domino 839

Fat	REA	IMF	BMI	CEZ	CHB
-0.007	0.24	+0.08	\$20	\$14	\$25

Act BW	88
205 Day Wt	752
365 Day Wt	1026
BW EPD	4.3
WW EPD	53
YW EPD	84
Milk EPD	24
M&G	50

\* This bull has always stood out from the time he was a calf. You will appreciate his pigment and conformation. You have to see this bulls hind quarter to appreciate it. This bull is in the top 20% of the breed for weaning, yearling and milk.

## LOT 3 SHR RANCHER 27

Calved 4/11/10 • Tattoo 27 • Horned Bull

Churchill Rancher 592R ..... MH Dakota 0230  
**CHURCHILL RANCHER 8108 U ET** Churchill Lady 202  
 CL 1 Dominette 301N ..... CL 1 Domino 9126J 1ET  
 CL 1 Dominette 8184H

KB L1 Domino 661 ..... HH Advance 492D  
**LADY DOMINO 380** Montana Miss J241  
 SH Lady Special 964 ..... F Special 526 1ET  
 SH 1 Miss Dom 5064

Fat	REA	IMF	BMI	CEZ	CHB
-0.002	+0.10	+0.09	\$17	\$14	\$20

Act BW	95
205 Day Wt	660
365 Day Wt	1002
BW EPD	4.6
WW EPD	44
YW EPD	68
Milk EPD	20
M&G	42

\* Another excellent Rancher son who is deep bodied and shows great potential for the commercial breeder. His EPD's are above the 20th percentile for milk and marbling.

## LOT 4 SHR ROBIN HOOD 19

Calved 4/08/10 • Tattoo 19 • Horned Bull

HH Robin Hood L130 ..... SR Robin Hood 249  
**SH ROBIN HOOD 724** HH Miss Patriot 7573  
 SH Lady Domino 047 ..... KB L1 Domino 661  
 SH 1 Miss Dom 5022

F L2 Standard 348 ..... Sandhill Stan L2  
**LADY STANDARD 771** F MS 9012 Power 534  
 Daisy Imprint 468 ..... SR Imprint 182  
 Miss Explorer 109

Fat	REA	IMF	BMI	CEZ	CHB
-0.008	-0.02	-0.02	\$13	\$14	\$12

Act BW	80
205 Day Wt	707
365 Day Wt	932
BW EPD	3.1
WW EPD	33
YW EPD	46
Milk EPD	22
M&G	39

\* This is a very smooth muscled bull. He is moderately framed with good pigment. This bull would make an excellent cross on black cows to produce offspring that top the market.



**SHR ROBIN HOOD 19**

## LOT 5 SHR DOMINO 06

Calved 4/01/10 • Tattoo 06 • Horned Bull

CL 1 Domino 9126J 1ET ..... HH Advance 767G 1 ET  
**UPS DOMINO 3027** CL 1 Dominette 490  
 UPS Miss Diamond 1353 ..... SH Diamond 881  
 UPS MS Milehigh 8330

/S Mister Mom 7745 ..... Mister Mom 221  
**SUPER MOM 822** /S MS Peer Plan 526E  
 Miss Bonanza 373 ..... F Bonanza 027  
 SH 1 Miss Domino 710

Fat	REA	IMF	BMI	CEZ	CHB
+0.008	+0.20	+0.11	\$19	\$19	\$22

Act BW	80
205 Day Wt	675
365 Day Wt	924
BW EPD	2.0
WW EPD	44
YW EPD	73
Milk EPD	28
M&G	50

\* This is one of the AI Bulls we have in this years offering. This bull is the top 10% of the breed averages for Milk EPD's and M&G. His marbling is also in the top 20% of the breed.

# LOT 6 **SHR DOMINO 25**

Calved 4/10/10 • Tattoo 925 • Horned Bull

Churchill Rancher 592R ..... MH Dakota 0230  
**CHURCHILL RANCHER 8180U ET** Churchill Lady 202  
 CL1 Dominette 301N ..... CL 1 Domino 9126J 1 ET  
 CL 1 Dominette 8184H

/S Mister Mom 7745 ..... Mister Mom 221  
**LADY MOM 731** /S MS Peer Plan 526E  
 Lady Advance 370 ..... PD Advance 9023  
 SH 1 Miss Domino 705

Act BW	78
205 Day Wt	725
365 Day Wt	1006
BW EPD	3.2
WW EPD	47
YW EPD	77
Milk EPD	24
M&G	47

Fat	REA	IMF	BMI	CEZ	CHB
+0.019	+0.15	+0.13	\$18	\$16	\$22

\* A stout Rancher son with balance and eye appeal. This bull is out of a moderate good producing cow who has proven consistent quality in our cow herd over the years.



**SHR DOMINO 25**

# LOT 7 **SHR DOMINO 02**

Calved 3/29/10 • Tattoo 02 • Horned Bull

CL 1 Domino 9126J 1ET ..... HH Advance 767G 1ET  
**UPS DOMINO 3027** CL 1 Dominette 490  
 UPS Miss Diamond 1353 ..... SH Diamond 881  
 UPS MS Milehigh 8330

KB L1 Domino 567R ..... KB L1 Domino 737  
**LADY DOMINO 839** KB L1 Dominette 0111  
 Miss Explorer 341 ..... F Explorer 953  
 Miss Spectacular 744

Act BW	70
205 Day Wt	708
365 Day Wt	858
BW EPD	1.1
WW EPD	45
YW EPD	74
Milk EPD	23
M&G	45

Fat	REA	IMF	BMI	CEZ	CHB
-0.002	+0.31	0.13	\$21	\$20	\$24

\* This 3027 son shows good muscling and style. You will appreciate his birth weight which is in the top 10% of the breed.

# LOT 8 **SHR ROBIN HOOD 37**

Calved 4/14/10 • Tattoo 37 • Horned Bull

HH Robin Hood L130 ..... SR Robin Hood 249  
**SH ROBIN HOOD 724** HH Miss Patriot 7573  
 SH Lady Domino 047 ..... KB L1 Domino 661  
 SH 1 Miss Dom 5022

MH Dakota Lad 3164 ..... MH Dakota 0230  
**MISSY DAKOTA LAD 786** Miss 065 Domnet 611  
 Lady Advance 428 ..... PD Advance 9023  
 SH 1 Miss Dom 5064

Act BW	89
205 Day Wt	719
365 Day Wt	993
BW EPD	4.6
WW EPD	36
YW EPD	64
Milk EPD	24
M&G	42

Fat	REA	IMF	BMI	CEZ	CHB
-0.006	+0.01	+0.02	\$12	\$12	\$15

\* This 724 Robin Hood son is in the top 10% of the breed for milk. His mother is a good producing stout cow.



# LOT 9 **SHR RANCHER 23**

Calved 4/10/10 • Tattoo 23 • Horned Bull

Churchill Rancher 592 R  
**CHURCHILL RANCHER 8108 U ET**  
 CL 1 Dominette 301N .....  
 Golden Achiever 2072 .....  
**LADY PURE GOLD 741**  
 Miss Robin Hood 391 .....

MH Dakota 0230  
 Churchill Lady 202  
 CL 1 Domino 9126J 1ET  
 CL 1 Dominette 8184H  
 C -S Pure Gold 98170  
 C 8403 MS Achv 96044  
 HH Robin Hood L130  
 SH Lady Domino 065

Act BW	83
205 Day Wt	684
365 Day Wt	917
BW EPD	3.1
WW EPD	44
YW EPD	79
Milk EPD	24
M&G	46

Fat	REA	IMF	BMI	CEZ	CHB
+0.017	+0.17	+0.22	\$19	\$14	\$23

\* You will appreciate this bull for calving ease along with his weaning weight potential. He has great milk value and marbling.

# LOT 10 **SHR L1 DOMINO 15**

Calved 4/07/10 • Tattoo 15 • Horned Bull

KB L1 Domino 737 .....  
**KB L1 DOMINO 567R**  
 KB L1 Dominette 0111 .....  
 F Explorer 953 .....  
**MISS EXPLORER 381**  
 SH 1 Miss Domino 7187 .....

JA L1 Domino 503 2ET  
 KB L1 Dominette 513  
 CL 1 Domino 392  
 HH MS Advance 2019B  
 CH 82B Explorer 122E  
 F MS Montana 417 1ET  
 CL 1 Domino 9149  
 Lady Summit 1036

Act BW	81
205 Day Wt	732
365 Day Wt	1015
BW EPD	3.6
WW EPD	46
YW EPD	76
Milk EPD	10
M&G	33

Fat	REA	IMF	BMI	CEZ	CHB
-0.009	+0.28	-0.04	\$20	\$15	\$20

\* This is a very eye appealing bull with great depth and length. This bull will put the pounds on your calves at weaning time.



**SHR L1 DOMINO 15**



# LOT 11 SHR L1 DOMINO 10

Calved 4/05/10 • Tattoo 10 • Horned Bull

KB L1 Domino 737 ..... JAL1 Domino 503 2ET  
**KB L1 DOMINO 567R** ..... KB L1 Dominette 513  
 KB L1 Dominette 0111 ..... CL 1 Domino 392  
 ..... HH MS Advance 2019B

PD Advance 9023 ..... CFR Advance 643  
**LADY ADVANCE 355** ..... PD Miss Power 301  
 Miss Spectacular 748 ..... KB L1 Domino 427  
 ..... Special Lady 3033

Fat	REA	IMF	BMI	CEZ	CHB
-0.017	0.18	-0.06	\$17	\$14	\$15

Act BW	85
205 Day Wt	672
365 Day Wt	896
BW EPD	2.8
WW EPD	38
YW EPD	64
Milk EPD	14
M&G	33

\* This long sided bull has good volume, a wide base and will catch your eye.



**SHR L1 DOMINO 10**

# LOT 12 SHR ROBIN HOOD 22

Calved 4/09/10 • Tattoo 22 • Horned Bull

HH Robin Hood L130 ..... SR Robin Hood 249  
**SH ROBIN HOOD 724** ..... HH Miss Patriot 7573  
 SH Lady Domino 047 ..... KB L1 Domino 661  
 ..... SH 1 Miss Dom 5022

F L2 Standard 348 ..... Sandhill Stan L2  
**MISS STANDARD 762** ..... F MS 9012 Power 534  
 Lady Advance 116 ..... PD Advance 9023  
 ..... SH L1 Lady Dom 5004

Fat	REA	IMF	BMI	CEZ	CHB
-0.016	-0.02	-0.04	\$12	\$13	\$12

Act BW	89
205 Day Wt	663
365 Day Wt	981
BW EPD	4.5
WW EPD	33
YW EPD	53
Milk EPD	20
M&G	37

# LOT 13 SHR ROBIN HOOD 32

Calved 4/14/10 • Tattoo 32 • Horned Bull

HH Robin Hood L130 ..... SR Robin Hood 249  
**SH ROBIN HOOD 724** ..... HH Miss Patriot 7573  
 SH Lady Domino 047 ..... KB L1 Domino 661  
 ..... SH 1 Miss Dom 5022

F L2 Standard 348 ..... Sandhill Stan L2  
**LADY STANDARD 651S** ..... F MS 9012 Power 534  
 Lady Advance 303 ..... PD Advance 9023  
 ..... SH Lady Domino 034

Fat	REA	IMF	BMI	CEZ	CHB
-0.012	-0.02	-0.01	\$13	\$14	\$14

Act BW	83
205 Day Wt	715
365 Day Wt	931
BW EPD	3.3
WW EPD	34
YW EPD	53
Milk EPD	22
M&G	39

\* This is a deep bodied bull with solid markings. This bull should add pounds and profits to the bottom line.

# LOT 14 SHR RANCHER 64

Tattoo 64

CHURCHILL RANCHER 8108UET

LADY DOMINO 761

Fat	REA	IMF	BMI	CEZ	CHB
.001	.25	.04	\$17	\$15	\$20

Act BW	
205 Day Wt	
365 Day Wt	
BW EPD	3.6
WW EPD	44
YW EPD	73
Milk EPD	17
M&G	34

\* This was one of our younger calves who really came on strong later in the year. He was not papered because he was a later calf.

# LOT 15 SHR RANCHER 17

Calved 4/07/10 • Tattoo 17 • Horned Bull

Churchill Rancher 592R ..... MH Dakota 0230  
**CHURCHILL RANCHER 8108U ET** Churchill Lady 202  
 CL 1 Dominette 301N ..... CL 1 Domino 9126J ET  
 CL 1 Dominette 8184H

Go Excel L18 ..... DD Excel Design 40  
**MISS EXCEL 601** GO MS 124 Advance 7005  
 Lady Advance 123 ..... PD Advance 9023  
 SH 1 Miss Domino 756

Fat	REA	IMF	BMI	CEZ	CHB
-.005	+.29	+.10	\$19	\$12	\$27

Act BW	90
205 Day Wt	807
365 Day Wt	1021
BW EPD	4.6
WW EPD	58
YW EPD	90
Milk EPD	27
M&G	56

# LOT 16 SHR ROBIN HOOD 49

Calved 4/22/10 • Tattoo 49 • Horned Bull

HH Robin Hood L130 ..... SR Robin Hood 249  
**SH ROBIN HOOD 724** HH Miss Patriot 7573  
 SH Lady Domino 047 ..... KB L1 Domino 661  
 SH 1 Miss Dom 5022

KB L1 Domino 661 ..... HH Advance 492D  
**SH L1 LADY DOMINO 202** Montana Miss J241  
 Lady Standard 5055 ..... DS Cooneye 0843  
 Miss Domino 047

Fat	REA	IMF	BMI	CEZ	CHB
-.027	+.06	+.02	\$12	\$13	\$13

Act BW	90
205 Day Wt	674
365 Day Wt	1005
BW EPD	3.5
WW EPD	29
YW EPD	50
Milk EPD	21
M&G	35

# LOT 17 SHR ROBIN HOOD 68

Calved 4/18/10 • Tattoo 68 • Horned Bull

HH Robin Hood L130 ..... SR Robin Hood 249  
**SH ROBIN HOOD 724** HH Miss Patriot 7573  
 SH Lady Domino 047 ..... KB L1 Domino 661  
 SH 1 Miss Dom 5022

HH Robin Hood L130 ..... SR Robin Hood 249  
**MISS ROBIN HOOD 391** HH Miss Patriot 7573  
 SH Lady Domino 065 ..... KB L1 Domino 661  
 Lady Standard 3100

Fat	REA	IMF	BMI	CEZ	CHB
-.021	-.01	+.09	\$13	\$14	\$13

Act BW	86
205 Day Wt	612
365 Day Wt	947
BW EPD	2.6
WW EPD	25
YW EPD	51
Milk EPD	24
M&G	36





# LOT 25 SH DOMINO 08

Calved 4/03/10 • Tattoo 08 • Horned Bull

KB L1 Domino 218 ..... HH Advance 7046G  
**KB L1 DOMINO 826U** ..... Montana Miss 011  
 KB L1 Dominette 636 ..... CL Domino 180L  
 ..... KB L1 Dominette 323

F Bonanza 027 ..... LPG Bonanza 52G  
**MISS BONANZA 783** ..... F MS Montana 454 1 ET  
 SH Lady Domino 909 ..... KB L1 Domino 661  
 ..... Miss Domino 1042

Fat	REA	IMF	BMI	CEZ	CHB
-018	-02	-02	\$18	\$17	\$20

Act BW	87
205 Day Wt	757
365 Day Wt	1013
BW EPD	2.7
WW EPD	44
YW EPD	74
Milk EPD	22
M&G	45

# LOT 26 SH DIAMOND 013

Calved 4/04/10 • Tattoo 013 • Horned Bull

JNHR Diamond ET 414B ..... Bel L Diamond 12Z ET  
**OXH DIAMOND 2215** ..... CH AP Amy 41Y  
 OXH LILA 8124 ..... OXH Mark Domino 5158  
 ..... OXH Sara 4130

KB L1 Domino 661 ..... HH Advance 492D  
**SH LADY DOMINO 039** ..... Montana Miss J241  
 Lady Duke 4078 ..... SH Duke 016  
 ..... Lady Domino 046

Fat	REA	IMF	BMI	CEZ	CHB
-030	+38	-10	\$9	\$12	\$17

Act BW	83
205 Day Wt	702
365 Day Wt	916
BW EPD	5.0
WW EPD	42
YW EPD	63
Milk EPD	22
M&G	43

\*This Diamond son is a great herd bull prospect. He has a clean front a level top and he is thick and muscled from front to back. Stroh Hereford will be keeping an interest in this bull.



**SH DIAMOND 013**





# LOT 29 SH DAKOTA LAD 021

Calved 4/07/10 • Tattoo 021 • Horned Bull

MH Dakota 0230..... SR Lad 447  
**MH DAKOTA LAD 3164**..... JV Angel 684  
 Miss 065 Domnet 611..... WT 90 Domino 065  
 ..... MH Miss Spectre 448

KB L1 Domino 661 ..... HH Advance 492D  
**SH L1 LADY DOMINO**..... Montana Miss J241  
 SH 1 Miss Domino 782..... CL 1 Domino 9149  
 ..... Lady Domino 053

Fat	REA	IMF	BMI	CEZ	CHB
- .003	+ .18	- .08	\$12	\$13	\$13

Act BW	88
205 Day Wt	745
365 Day Wt	854
BW EPD	3.1
WW EPD	39
YW EPD	43
Milk EPD	16
M&G	36



**SH DAKOTA LAD 021**

# LOT 30 SH RED ADDITION 023

Calved 4/08/10 • Tattoo 023 • Horned Bull

SH Red Edition 06N ..... Pahl 36H Limited Edition 62L  
**BLL RED ADDITION 175T**..... SH Miss Diamond 950  
 Lady 58K Diamnd 106P ..... XTC 27H Sunshine Lad 58K  
 ..... BLL Lady Dia 50L DOD

PD Advance 9023..... CFR Advance 643  
**LADY ADVANCE 428**..... PD Miss Power 301  
 SH Miss DOM 5064..... CL 1 Domino 9149  
 ..... Special Lady 1057

Fat	REA	IMF	BMI	CEZ	CHB
- .005	+ .21	- .07	\$14	\$11	\$19

Act BW	90
205 Day Wt	642
365 Day Wt	975
BW EPD	6.6
WW EPD	48
YW EPD	78
Milk EPD	18
M&G	42

\* This bull has extra pigment and would make an excellent cross on black cows.

# LOT 31 SH DAKOTA LAD 025

Calved 4/09/10 • Tattoo 025 • Horned Bull

MH Dakota 0230..... SR Lad 447  
**MH DAKOTA LAD 3164**..... JV Angel 684  
 Miss 065 Domnet 611..... WT 90 Domino 065  
 ..... MH Miss Spectre 448

F Explorer 953..... CH 82B Explorer 122E  
**MISS EXPLORER 260**..... F MS Montana 417 1 ET  
 Lady Standard 4019 ..... DS Cooneye 0843  
 ..... Miss Domino 049

Fat	REA	IMF	BMI	CEZ	CHB
+ .023	- .28	- .01	\$13	\$14	\$7

Act BW	83
205 Day Wt	607
365 Day Wt	858
BW EPD	3.2
WW EPD	28
YW EPD	49
Milk EPD	17
M&G	31

\* This Dakota Lad son is a nice smooth, light colored bull.



# LOT 32 SH DOMINO 028

Calved 4/09/10 • Tattoo 028 • Horned Bull

KB L1 Domino 218 ..... HH Advance 7046G  
**KB L1 DOMINO 826U** ..... Montana Miss 011  
 KB L1 Dominette 636 ..... CL 1 Domino 180L  
 ..... KB L1 Dominette 323

KB L1 Domino 563R ..... RCH Advance 2319  
**LADY L1 DOMINO 713** ..... KB Dominette 3128  
 Miss Bonanza 397 ..... F Bonanza 027  
 ..... SH Lady Special 874

Fat	REA	IMF	BMI	CEZ	CHB
-022	.16	.09	\$23	\$19	\$25

Act BW	83
205 Day Wt	660
365 Day Wt	1045
BW EPD	2.7
WW EPD	46
YW EPD	88
Milk EPD	21
M&G	44

# LOT 33 SH L1 DOMINO 029

Calved 4/09/10 • Tattoo 029 • Horned Bull

RCH Advance 2139 ..... HH Advance 965J  
**KB L1 DOMINO 563R** ..... RB L1 Dominette 8025  
 KB L1 Dominette 3128 ..... SNS 47G Silver Dandy 11J  
 ..... KB L1 Dominette 7127

F Bonanza 027 ..... LPG Bonanza 52G  
**MISS BONANZA 209** ..... F MS Montana 454 1ET  
 SH 1 Ms Domino 6029 ..... CL 1 Domino 9149  
 ..... Miss Domino 030

Fat	REA	IMF	BMI	CEZ	CHB
+006	+19	+19	\$24	\$17	\$25

Act BW	86
205 Day Wt	711
365 Day Wt	1090
BW EPD	2.6
WW EPD	49
YW EPD	73
Milk EPD	19
M&G	43

\* This bull exhibits length in both his legs and his body.

# LOT 34 SH L1 DOMINO 032

Calved 4/09/10 • Tattoo 032 • Horned Bull

RCH Advance 2139 ..... HH Advance 965J  
**KB L1 DOMINO 563R** ..... RB L1 Dominette 8025  
 KB L1 Dominette 3128 ..... SNS 47G Silver Dandy 11J  
 ..... KB L1 Dominette 7127

F Bonanza 027 ..... LPG Bonanza 52G  
**SH BONANZA 2021** ..... F MS Montana 454 1ET  
 Lady Standard 6018 ..... DS Cooneye 0843  
 ..... Miss Domino 017

Fat	REA	IMF	BMI	CEZ	CHB
+001	-02	+11	\$21	\$16	\$17

Act BW	95
205 Day Wt	591
365 Day Wt	839
BW EPD	3.5
WW EPD	38
YW EPD	57
Milk EPD	17
M&G	35

# LOT 35 SH DIAMOND 033

Calved 4/10/10 • Tattoo 033 • Horned Bull

JNHR Diamond ET 414B ..... Bel L Diamond 12Z ET  
**OXH DIAMOND 2215** ..... CH AP Amy 41Y  
 OXH Lila 8124 ..... OXH Mark Domino 5158  
 ..... OXH Sara 4130

F Bonanza 027 ..... LPT Bonanza 52G  
**MISS BONANZA 3121** ..... F MS Montana 454 1ET  
 Miss Explorer 115 ..... F Explorer 953  
 ..... Miss Spectacular 792

Fat	REA	IMF	BMI	CEZ	CHB
-015	+24	-20	\$12	\$12	\$17

Act BW	91
205 Day Wt	683
365 Day Wt	1018
BW EPD	6.1
WW EPD	49
YW EPD	78
Milk EPD	24
M&G	48

\* This Diamond son is a nice solid marked bull who is red to the ground.



# LOT 40 SH RED ADDITION 042

Calved 4/12/10 • Tattoo 042 • Horned Bull

SH Red Edition 06N ..... PAHL 36H Limited Edition 62L  
**BLL RED ADDITION 175T** ..... SH Miss Diamond 950  
 Lady 58K Diamond 106P ..... XTC Sunshine Lad 58K  
 ..... BLL Lady Dia 50L

F Explorer 953 ..... CH 82B Explorer 122E  
**MISS EXPLORER 464** ..... F MS Montana 417 1ET  
 SH Miss Domino 837 ..... CL 1 Domino 9149  
 ..... Lady Special 2031

Fat	REA	IMF	BMI	CEZ	CHB
+003	+11	-11	\$13	\$11	\$14

Act BW	93
205 Day Wt	645
365 Day Wt	870
BW EPD	5.5
WW EPD	42
YW EPD	65
Milk EPD	14
M&G	35

# LOT 41 SH DIAMOND 043

Calved 4/13/10 • Tattoo 043 • Horned Bull

JNHR Diamond ET 414B ..... Bel L Diamond 12Z ET  
**OXH DIAMOND 2215** ..... CH AP Amy 41Y  
 OXH Lila 8124 ..... OXH Mark Domino 5158  
 ..... OXH Sara 4130

KB L1 Domino 661 ..... HH Advance 492D  
**SH LADY DOMINO 034** ..... Montana Miss J241  
 SH L1 Lady Dom 5002 ..... GB L1 Domino 804  
 ..... Miss L Domino 7013

Fat	REA	IMF	BMI	CEZ	CHB
+005	-02	-04	\$9	\$13	\$11

Act BW	95
205 Day Wt	572
365 Day Wt	833
BW EPD	4.6
WW EPD	33
YW EPD	47
Milk EPD	20
M&G	37

\*This is another well pigmented Diamond son.

# LOT 42 SH RED ADDITION 045

Calved 4/13/10 • Tattoo 045 • Horned Bull

SH Red Edition 06N ..... Pahl 36H Limited Edition 62L  
**BLL RED ADDITION 175T** ..... SH Miss Diamond 950  
 Lady 58K Diamnd 106P ..... XTC 27H Sunshine Lad 58K  
 ..... BLL Lady Dia 50L

MH Dakota Lad 3164 ..... MH Dakota 0230  
**MISS DAKOTA 638** ..... Miss 065 Domnet 611  
 Miss Explorer 249 ..... F Explorer 953  
 ..... SH Miss Domino 825

Fat	REA	IMF	BMI	CEZ	CHB
+004	+18	-04	\$15	\$10	\$19

Act BW	93
205 Day Wt	714
365 Day Wt	1021
BW EPD	6.3
WW EPD	49
YW EPD	81
Milk EPD	17
M&G	42

\* A great Red Addition son with length and solid markings. He will grow to be a very thick large bull that will put his progeny ahead at weaning time.



SH RED ADDITION 045

# LOT 43 SH DOMINO 047

Calved 4/14/10 • Tattoo 047 • Horned Bull

KB L1 Domino 218 ..... HH Advance 7046G  
**KB L1 DOMINO 826U** ..... Montana Miss 011  
 KB L1 Dominette 636 ..... CL1 Domino 180L  
 ..... KB L1 Dominette 323

OXH Diamond 2215 ..... JNHR Diamond ET 414B  
**PEARL DIAMOND 7008** ..... OXH Lila 8124  
 SH Lady Domino 026 ..... KB L1 Domino 661  
 ..... SH 1 Miss Dom 5037

Fat	REA	IMF	BMI	CEZ	CHB
-027	+21	+04	\$15	\$16	\$22

Act BW	90
205 Day Wt	704
365 Day Wt	965
BW EPD	3.9
WW EPD	46
YW EPD	73
Milk EPD	25
M&G	48

# LOT 44 SH RED ADDITION 048

Calved 4/14/10 • Tattoo 048 • Horned Bull

SH Red Edition 06N ..... PAHL 36H Limited Edition 62L  
**BLL RED ADDITION 175T** ..... SH Miss Diamond 950  
 Lady 58K Diamnd 106P ..... XTC 27H Sunshine Lad 58K  
 ..... BLL Lady Dia 50L

SH L1 Domino 5003 ..... GB L1 Domino 804  
**SH LADY DOMINO 016** ..... Miss Domino 1042  
 SH Lady Special 772 ..... F Special 526 1ET  
 ..... Miss Domino 2041

Fat	REA	IMF	BMI	CEZ	CHB
-004	+18	-15	\$13	\$12	\$12

Act BW	94
205 Day Wt	641
365 Day Wt	956
BW EPD	5.0
WW EPD	38
YW EPD	64
Milk EPD	16
M&G	35

# LOT 45 SH L1 DOMINO 050

Calved 4/15/10 • Tattoo 050 • Horned Bull

RCH Advance 2139 ..... HH Advance 965J  
**KB L1 DOMINO 563R** ..... RB L1 Dominette 8025  
 KB Dominette 3128 ..... SNS 47G Silver Dandy 11J  
 ..... KB L1 Dominette 7127

HH Robin Hood L130 ..... SR Robin Hood 249  
**LADY ROBIN HOOD 675** ..... HH Miss Patriot 7573  
 Miss SH Special 036 ..... F Special 526 1ET  
 ..... Special Lady 1052

Fat	REA	IMF	BMI	CEZ	CHB
+002	+24	+07	\$21	\$18	\$22

Act BW	76
205 Day Wt	797
365 Day Wt	1073
BW EPD	1.2
WW EPD	45
YW EPD	78
Milk EPD	24
M&G	47

\* This is a thick solid marked 563R son he has the highest gain from birth weight to 205 day weight in the sale.

# LOT 46 SH L1 DOMINO 055

Calved 4/16/10 • Tattoo 055 • Horned Bull

RCH Advance 2139 ..... HH Advance 965J  
**KB L1 DOMINO 563 R** ..... RB L1 Dominette 8025  
 KB Dominette 3128 ..... SNS 47G Silver Dandy 11J  
 ..... KB L1 Dominette 7127

KB L1 Domino 661 ..... HH Advance 492D  
**SH LADY DOMINO 178** ..... Montana Miss J241  
 SH 1 MS Domino 6029 ..... CL 1 Domino 9149  
 ..... Miss Domino 030

Fat	REA	IMF	BMI	CEZ	CHB
+001	+04	+05	\$18	\$17	\$14

Act BW	89
205 Day Wt	569
365 Day Wt	808
BW EPD	2.3
WW EPD	33
YW EPD	46
Milk EPD	16
M&G	33

# LOT 47 SH DOMINO 057

Calved 4/17/10 • Tattoo 057 • Horned Bull

KB L1 Domino 218 ..... HH Advance 7046G  
**KB L1 DOMINO 826U** ..... Montana Miss 011  
 KB L1 Dominette 636 ..... CL1 Domino 180L  
 ..... KB L1 Dominette 323

KB L1 Domino 563R ..... RCH Advance 2139  
**LADY L1 DOMINO 704** ..... KB Dominette 3128  
 Miss Bonanza 4026 ..... F Bonanza 027  
 ..... Miss Explorer 115

Fat	REA	IMF	BMI	CEZ	CHB
-027	+20	-01	\$22	\$18	\$24

Act BW	84
205 Day Wt	666
365 Day Wt	1036
BW EPD	3.4
WW EPD	49
YW EPD	90
Milk EPD	21
M&G	46

This 826U son is what the cattle market is demanding today. Muscular with a moderate sized build. He sells!

# LOT 48 SH L1 DOMINO 058

Calved 4/17/10 • Tattoo 058 • Horned Bull

RCH Advance 2139 ..... HH Advance 965J  
**KB L1 DOMINO 563R** ..... RB L1 Dominette 8025  
 KB Dominette 3128 ..... SNS 47G Silver Dandy 11J  
 ..... KB L1 Dominette 7127

OXH Diamond 2215 ..... JNHR Diamond ET 414B  
**PEARL DIAMOND 552** ..... OXH Lila 8124  
 SH Lady Domino 011 ..... KB L1 Domino 661  
 ..... SH 1 Miss Dom 5017

Fat	REA	IMF	BMI	CEZ	CHB
-005	+27	+05	\$20	\$18	\$20

Act BW	81
205 Day Wt	735
365 Day Wt	1050
BW EPD	2.0
WW EPD	44
YW EPD	60
Milk EPD	20
M&G	42

# LOT 49 SH L1 DOMINO 059

Calved 4/17/10 • Tattoo 059 • Horned Bull

RCH Advance 2139 ..... HH Advance 965J  
**KB L1 DOMINO 563R** ..... RB L1 Dominette 8025  
 KB Dominette 3128 ..... SNS 47G Silver Dandy 11J  
 ..... KB L1 Dominette 7127

F Explorer 953 ..... CH 82B Explorer 122E  
**MISS EXPLORER 486** ..... F MS Montana 417 1ET  
 SH Lady Special 875 ..... F Special 526 1ET  
 ..... Miss Domino 1042

Fat	REA	IMF	BMI	CEZ	CHB
-004	+02	-04	\$20	\$16	\$14

Act BW	88
205 Day Wt	610
365 Day Wt	848
BW EPD	3.6
WW EPD	37
YW EPD	56
Milk EPD	14
M&G	33



# LOT 50 SH L1 DOMINO 064

Calved 4/18/10 • Tattoo 064 • Horned Bull

RCH Advance 2139 ..... HH Advance 965J  
**KB L1 DOMINO 563 R** ..... RB L1 Dominette 8025  
 KB Dominette 3128 ..... SNS 47G Silver Dandy 11J  
 ..... KB L1 Dominette 7127

HH Robin Hood L130 ..... SR Robin Hood 249  
**LADY ROBIN HOOD 4020** ..... HH Miss Patriot 7573  
 SH Lady Domino 092 ..... KB L1 Domino 6102  
 ..... Lady Standard 6018

Fat	REA	IMF	BMI	CEZ	CHB
+002	+18	+13	\$21	\$16	\$22

Act BW	94
205 Day Wt	755
365 Day Wt	1017
BW EPD	3.6
WW EPD	45
YW EPD	71
Milk EPD	23
M&G	45

\* This classically marked bull out of 563R has a good mother with a nice utter.



# LOT 51 SH RED ADDITION 069

Calved 4/20/10 • Tattoo 069 • Horned Bull

SH Red Edition 06N ..... PAHL 36H Limited Edition 62L  
**BLL RED ADDITION 175T** ..... SH Miss Diamond 950  
 Lady 58K Diamnd 106P ..... XTC 27H Sunshine Lad 58K  
 ..... BLL Lady Dia 50L

HH Robin Hood L130 ..... SR Robin Hood 249  
**LADY ROBIN HOOD 4012** ..... HH Miss Patriot 7573  
 SH Lady Domino 026 ..... KB L1 Domino 661  
 ..... SH 1 Miss Dom 5037

Fat	REA	IMF	BMI	CEZ	CHB
+004	+07	+06	\$15	\$13	\$15

Act BW	83
205 Day Wt	621
365 Day Wt	906
BW EPD	2.9
WW EPD	36
YW EPD	63
Milk EPD	21
M&G	39

# LOT 52 SH L1 DOMINO 071

Calved 4/21/10 • Tattoo 071 • Horned Bull

RCH Advance 2139 ..... HH Advance 965J  
**KB L1 DOMINO 563R** ..... RB L1 Dominette 8025  
 KB Dominette 3128 ..... SNS 47G Silver Dandy 11J  
 ..... KB L1 Dominette 7127

F Explorer 953 ..... CH 82B Explorer 122E  
**MISS EXPLORER 518** ..... F MS Montana 417 1ET  
 SH 1 Miss Domino 717 ..... CL 1 Domino 9149  
 ..... Lady Duke 1002

Fat	REA	IMF	BMI	CEZ	CHB
+000	+17	+09	\$22	\$16	\$22

Act BW	83
205 Day Wt	715
365 Day Wt	1021
BW EPD	3.7
WW EPD	47
YW EPD	76
Milk EPD	15
M&G	38

# LOT 53 SH DAKOTA LAD 073

Calved 4/22/10 • Tattoo 073 • Horned Bull

MH Dakota 0230..... SR Lad 447  
**MH DAKOTA LAD 3164**..... JV Angel 684  
 Miss 065 Domnet 611..... WT 90 Domino 065  
 ..... MH Miss Spectre 448

F Bonanza 027..... LPG Bonanza  
**MISS BONANZA 426**..... F MS Montana 454 1ET  
 SH 1 MS Domino 6023..... CL 1 Domino 9149  
 ..... Lady All Pro 9005

Fat	REA	IMF	BMI	CEZ	CHB
+008	+09	+03	\$15	\$11	\$20

Act BW	93
205 Day Wt	712
365 Day Wt	994
BW EPD	5.4
WW EPD	48
YW EPD	78
Milk EPD	16
M&G	40

# LOT 54 SH DIAMOND 076

Calved 4/23/10 • Tattoo 076 • Horned Bull

JNHR Diamond ET 414B..... Bel L Diamond 12Z ET  
**OXH DIAMOND 2215**..... CHAP Amy 41Y  
 OXH Lila 8124..... OXH Mark Domino 5158  
 ..... OXH Sara 4130

KB L1 Domino 661..... HH Advance 492D  
**SH LADY DOMINO 026**..... MontanaMiss J241  
 SH 1 Miss Dom 5037..... CL 1 Domino 9149  
 ..... Miss Domino 1086

Fat	REA	IMF	BMI	CEZ	CHB
-007	.10	-08	\$9	\$13	\$14

Act BW	90
205 Day Wt	634
365 Day Wt	931
BW EPD	4.6
WW EPD	38
YW EPD	57
Milk EPD	24
M&G	43

# LOT 55 SH L1 DOMINO 082

Calved 4/28/10 • Tattoo 082 • Horned Bull

RCH Advance 2139..... HH Advance 965J  
**KB L1 DOMINO 563R**..... RB L1 Dominette 8025  
 KB Dominette 3128..... SNS 47G Silver Dandy 11J  
 ..... KB L1 Dominette 7127

OXH Diamond 2215..... JNHR Diamond ET 414B  
**PEARL DIAMOND 583**..... OXH Lila 8124  
 SH Lady Domino 031..... KB L1 Domino 661  
 ..... Lady Duke 4100

Fat	REA	IMF	BMI	CEZ	CHB
-012	+40	-05	\$18	\$15	\$23

Act BW	94
205 Day Wt	757
365 Day Wt	1097
BW EPD	4.6
WW EPD	51
YW EPD	85
Milk EPD	20
M&G	45

\* This is another bull with a nice thick hind quarter. This bull was raised by one of Tony's better cows.

# LOT 56 SH DAKOTA LAD 085

Calved 5/01/10 • Tattoo 085 • Horned Bull

MH Dakota 0230..... SR Lad 447  
**MH DAKOTA LAD 3164**..... JV Angel 684  
 Miss 065 Domnet 611..... WT 90 Domino 65  
 ..... MH Miss Spectre 448

F Bonanza 027..... LPG Bonanza 52G  
**MISS BONANZA 500**..... F MS Montana 454 1 ET  
 SH Lady Special 727..... F Special 526 1 ET  
 ..... Lady Advancer 3015

Fat	REA	IMF	BMI	CEZ	CHB
+014	-18	-07	\$13	\$12	\$12

Act BW	94
205 Day Wt	602
365 Day Wt	936
BW EPD	5.0
WW EPD	38
YW EPD	64
Milk EPD	17
M&G	36

\* Another thick, light colored Dakota Lad son.

# LOT 57 SH DOMINO 090

Calved 5/05/10 • Tattoo 090 • Horned Bull

KB L1 Domino 218 ..... HH Advance 7046G  
**KB L1 DOMINO 826U** ..... Montana Miss 011  
 KB L1 Dominette 636 ..... CL 1 Domino 180L  
 ..... KB L1 Dominette 323

OXH Diamond 2215 ..... JNHR Diamond ET 414B  
**PEARL DIAMOND 729** ..... OXH Lila 8124  
 Miss SH Special 014 ..... F Special 526 1 ET  
 ..... SH 1 MS Domino 6076

Fat	REA	IMF	BMI	CEZ	CHB
-031	.32	.01	\$17	\$17	\$24

Act BW	81
205 Day Wt	717
365 Day Wt	1059
BW EPD	3.3
WW EPD	47
YW EPD	83
Milk EPD	25
M&G	48

This is a KBL1 Domino 826U with extra pigment on his eyes, he is a solid red bull marked to the ground.

# LOT 58 SH RED ADDITION 097

Calved 5/12/10 • Tattoo 097 • Horned Bull

SH RED Edition 06N ..... PAHL 36H Limited Edition 62L  
**BLL RED ADDITION 175T** ..... SH Miss Diamond 950  
 Lady 58K Diamnd 106P ..... XTC 27H Sunshine Lad 58K  
 ..... BLL Lady Dia 50L

F Bonanza 027 ..... LPG Bonanza 52G  
**MISS BONANZA 467** ..... F MS Montana 454 1ET  
 SH 1 MS Domino 6073 ..... CL 1 Domino 9149  
 ..... Miss Domino 1042

Fat	REA	IMF	BMI	CEZ	CHB
-005	+29	-04	\$17	\$14	\$19

Act BW	80
205 Day Wt	701
365 Day Wt	992
BW EPD	3.7
WW EPD	45
YW EPD	72
Milk EPD	16
M&G	38

\* A sound Red Edition bull out of a top cow.

# LOT 59 SH DAKOTA LAD 098

Calved 5/14/10 • Tattoo 098 • Horned Bull

MH Dakota 0230 ..... SR Lad 447  
**MH DAKOTA LAD 3164** ..... JV Angel 684  
 Miss 065 Domnet 611 ..... WT 90 Domino 065  
 ..... MH Miss Spectre 448

MH Dakota Lad 3164 ..... MH Dakota 0230  
**MISS DAKOTA 608** ..... Miss 065 Domnet 611  
 Miss Explorer 310 ..... F Explorer 953  
 ..... SH 1 Miss Dom 5017

Fat	REA	IMF	BMI	CEZ	CHB
+014	-09	-06	\$12	\$11	\$13

Act BW	91
205 Day Wt	687
365 Day Wt	1013
BW EPD	4.8
WW EPD	39
YW EPD	69
Milk EPD	19
M&G	39

# LOT 60 SH L1 DOMINO 0100

Calved 5/16/10 • Tattoo 0100 • Horned Bull

RCH Advance 2139 ..... HH Advance 965J  
**KB L1 DOMINO 563R** ..... RB L1 Dominette 8025  
 KB Dominette 3128 ..... SNS 47G Silver Dandy 11J  
 ..... KB L1 Dominette 7127

F Explorer 953 ..... CH 82B Explorer 122E  
**MISS EXPLORER 3110** ..... F MS Montana 417 1ET  
 SH Lady Domino ..... SH L1 Domino 5003  
 ..... Miss Domino 1095

Fat	REA	IMF	BMI	CEZ	CHB
-011	+22	-06	\$19	\$13	\$20

Act BW	102
205 Day Wt	736
365 Day Wt	1066
BW EPD	6.6
WW EPD	50
YW EPD	83
Milk EPD	15
M&G	40



T S

|—|

**For more information contact:**

**STROH HEREFORDS**

Tony & Leona Stroh 701-764-5217

Mike & Dawn Stroh 701-573-4373

Mike Cell: 701-290-1191

10550 Hwy 200 • Killdeer, ND 58640

E-mail: [acmecatl@ndsupernet.com](mailto:acmecatl@ndsupernet.com)

# NOTES

---

---

---

---

---

---

---

---

---

---

---

---

---

---

---

---

---

---

---

---

---

---

---

---

---

---

---

---

---

---



# STROH HEREFORDS

10550 Hwy 200 • Killdeer, ND 58640



**SHR Domino 09**

