

History...

In 1886 George B. Curtis came from Wisconsin and began his dream to homestead in South Dakota. He built his claim shanty and in 1894 was able to bring his wife to join him at the present day Curtis Ranch. In 1895 Frank Curtis Sr. was born in the claim shanty. Frank Sr. purchased his first Polled Hereford bull in 1916 from Dick Varier, Alpena, SD. That same year Frank Jr. was born, also in the original house. When Frank Jr. was a young lad, he purchased his first registered Polled Hereford cow with money he had earned trapping animals for their fur.

Frank and Hazel were married in 1939 and they began their lives together raising Polled Herefords. Bulls were sold private treaty until 1953 when Frank and his father held their first bull sale in Miller, SD. Annual sales were held in Miller until 1962 when the sale was moved to Huron, SD. Daughter Joyce and husband Don Dubois joined the operation in 1958 followed by daughter Carol and husband Larry Gildemaster in 1974. Each of the three families maintained their own separate herds while working together as Curtis Polled Herefords.

Frank and Hazel dispersed their herd in 1978.

Don Dubois passed away in 2008 and their herd was dispersed in 2009. Larry and Carol will disperse their herd at the original homestead site while celebrating 95 years of Polled Herefords on the ranch.

The final and 60th consecutive bull sale will be held Feb. 18, 2012 at Bales CCC, Huron, SD.



Hazel and Frank Curtis



Don and Joyce Dubois (back, left), Carol and Larry Gildemaster
Hazel and Frank Curtis

Curtis Polled Herefords

Complete Dispersion

Saturday, October 1, 2011

12:00 Noon

at the farm, Virgil, South Dakota

*Please come look at the cattle Friday afternoon and join us that evening for CHB ribeye steak sandwiches and socializing.
Complimentary lunch served on sale day.*

SALE DAY PHONE:
605-883-4650

Home: 605-883-4566
Larry Gildemaster, cell: 605-350-9253
Carol Gildemaster, cell: 605-350-9476

Auctioneer: Chisum Peterson
605-234-4214, home; 605-730-4214, cell

Herdsmen: Dale Shoemaker

Sale Location:

Curtis Polled Herefords
38230 214th Street
Virgil, SD 57379

SELLING:

134 Cows
26 Bred Heifers
66 Heifer Calves
27 Bull Calves
7 Herd Bulls

Sale managed by:



Art Handel
605-391-8233 (cell)
605-399-9278 (office)
handelhereford@aol.com

Marc Hotchkiss
605-490-1513 (cell)
605-866-4495 (office)
marc@herefordamerica.com

www.TheHerefordConnection.com

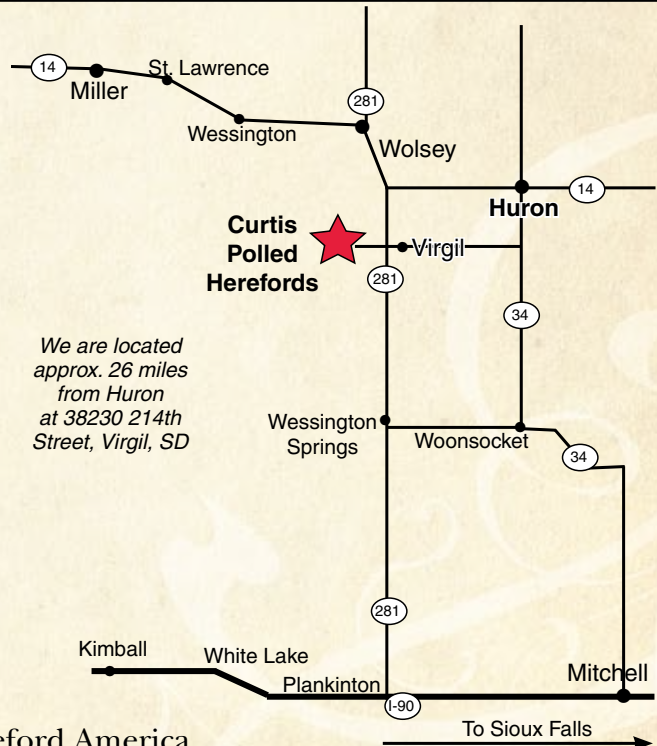
Special Thanks To:

Dale Shoemaker for his dedicated work the last 2½ years for us. Previously he worked for Don and Joyce Dubois for 35 years.

Lance Reilly - For his help for ten years (2000-2010).

Our neighbors Dale, Neal and Paul Duxbury, Jamie and Dennis Eggleston, Richard Peterson, and others that helped in so many ways in preparing for this sale.

Huron Veterinary Hospital for their professional services. They will be on hand to assist with health papers.



Catalog by Hereford America

Video Sale: Videos of sale cattle are available on our website at www.CurtisPolledHerefords.com or on another site www.TheHerefordConnection.com. Sale cattle will be on display in pens on sale day. The sale will be conducted by showing videos of the cattle on large screens in the sale ring.

Sale Staff:

Chisum Peterson, auctioneer (605) 234-4214, home
(605) 730-4214, cell
Art Handel, Hereford Connection (605) 391-8233, cell
(605) 399-9278, office
Marc Hotchkiss, Hereford Connection & Hereford America
(605) 490-1513, cell
(605) 866-4495 office
Levi Landers, American Hereford Assn. (308) 730-1396
Donnie Leddy, Cattle Business Weekly (605) 695-0113
Chris Effling, Dakota Farmer (605) 769-0142
Jeff Kapperman, Tri-State Neighbor (605) 363-3302
Jill Hotchkiss, Hereford America (605) 490-1409
Lou Ellen Harr, J&L Cattle Services (419) 685 0549
(Jeromesville, Ohio)

Special Guests:

Jack Ward, American Hereford Association,
Chief Operating Officer & Director of Breed Improvement
Mike Fink, Pres., South Dakota Hereford Association
Phil Eggers, Mgr., South Dakota Hereford Association
Keith Fawcett, American Hereford Association Director
SDJHA Queen, Kristen Fawcett

SALE DAY PHONE: 605-883-4650

SALE LOCATION: Sale is being held at the farm, 38230 214th Street, Virgil, SD 57379. Due to high water this year, please check our website for possible detours. Sale will be approx. 1/4 mile east of the Gildemaster barn. Look for the big tent.

Sale Managers: The Hereford Connection — Art Handel, Rapid City, SD, (605) 391-8233, mobile or (605) 399-9278, office; Marc Hotchkiss, Reva, SD, (605) 490-1513 (cell), or (605) 866-4495 (office).

Trucking:

(Sale Management will assist with trucking arrangements.)
Wolsey Trucking 406-652-0517,
406-670-1877 (Bob)
406-671-0228 (Bill)
Ed Melroe 701-371-9070
James Ollerich 605-359-4006
Andy Hollibaugh 308 430 1537

Cattle Videos: by Marc Hotchkiss,
The Hereford Connection/Hereford America

ALL SALES FINAL.

Insurance Available.

Airports: Commercial service to the following local airports: Huron, SD (25 miles) served by Great Lakes Airlines, (800) 554-5111; Skyways, Ltd. (charter service), (605) 352-2099; Sioux Falls Regional Airport (138 miles) served by Frontier, Delta, Allegiant, United, American Airlines; or Pierre Regional Airport (104 miles) served by Delta and Great Lakes.

Hotels:

Comfort Inn
100 21st St. SW
Huron, SD, 57350
866-539-0036

Super 8
2189 Dakota Ave. South
Huron, SD 57350-4397
(605) 352-0740

Best Western
2000 Dakota South
Huron, SD, 57350
866-539-0036

Dakota Inn
Highway 14 East
Huron, SD 57350
www.dakotainn.com
1-800-933-6626

Crossroads Hotel
100 4th St. SW
Huron, SD 57350
1-800-876-5858
(605) 352-3204

*A block of rooms
has been reserved at
Comfort Inn for the sale
under Curtis Polled
Herefords.*

Internet Video Broadcast and Bidding: Absentee bidders who wish to utilize the internet may either bid online at www.frontierstockyards.com or watch online and bid over the phone with a Frontier Stockyards representative by calling 605-244-2663, when prompted dial in the Conference ID: 87428. Please register online in advance of the sale.

Conference Call Line: A conference call line will be available to call in and place bids during the sale. Be sure to pre-register. Sale day Conference Call number is (605) 244-9066. The login code is 21368.

Sale will be broadcast online at
www.frontierstockyards.com
with phone bidding available.



Terms and Conditions:

1. Bids may be submitted to any of the sales staff or conducted over the phone through Frontier Stockyards or the Conference Call Line.
2. Each animal will be sold separately to the highest bidder.
3. The auctioneer will settle any dispute on bids.
4. Terms of sale are cash.
5. All sales are final.
6. Known blemishes, if any, will be noted in catalog or announced from the auction block.
7. All bulls over two years old will have passed a fertility test and be tested free of trichomoniasis.
8. All cattle, to the best of our knowledge, are free of any known genetic defects.
9. The EPDs in the catalog are from the most recent information available from the American Hereford Association at the time the catalog was compiled.
10. Any person attending the sale does so at his or her own risk and the owners and sale management assume no liability, legal or otherwise, for any accident that may occur.
11. All attempts are made to print current and accurate information in this catalog and the videos. Extreme care has been taken in copying each and every pedigree to avoid errors. Owners, sale management, videographer and Hereford America are not to be held responsible for any error which might appear and which is beyond our control.

Herd Health: All cattle guaranteed free of any known genetic defects. All bulls of breeding age are trich tested negative.

— Online Bidding Instructions —

Absentee bidders who wish to utilize the internet may either bid online at www.frontierstockyards.com or watch online and bid over the phone with a Frontier Stockyards representative by calling 605-244-2663, when prompted dial in the Conference ID: 87428. Please register online in advance of the sale.

Frontier Stockyards is the longest running, internet livestock marketing service in the country.

— Conference Call Line Instructions —

Absentee bidders who wish to use the Conference Call Line may do so by calling 605-244-9066. When prompted dial in the Conference ID: 21368.

Pre-register to bid: Please call Art Handel at 605-391-8233 prior to sale day to register for a buyer number. (You may call several days in advance to pre-register.) To register on sale day call 605-244-9066 between the hours of 9 and 11 (Central Time). All Conference Call Bidders must be approved by 11:00 in order to bid. The conference call number on sale day for bidding is 605-244-9066, password code when prompted: 21368.



REFERENCE SIRES



AH HEAVY DUTY 11G *SOD, CHB*

Reg. # P24027746

BD: 2/18/97

FELTONS 517 *SOD, CHB, HYF*
 BOYD HEAVY HITTER 4007 *SOD, CHB*
 BOYD FASINATION Z86

FELTONS 403
 F PRINCESS A80 *DOD*
 OR DOM 549 F243 *SOD*
 DL DOMINETTE 59U

AH MS EXTRA 8B *DOD*

IHRY EXCEED *SOD*
 AH MS CHARM VIC 18S

IHRY EXCEL
 GK DYNA MISS 379N
 AH CHARME BAN P2N
 AH MS VICTORIOUS 8P

| CED | BW | WW | YW | Milk | M&G | REA | Marb. | BMI | CEZ | CHB |
|-----|-----|----|----|------|-----|-----|-------|------|------|------|
| 6.4 | 0.6 | 55 | 81 | 14 | 41 | .13 | .07 | \$16 | \$21 | \$26 |

A bull we purchased from Pete Atkins that performed so well for us. His daughters are exceptional and his sons were very well accepted by our commercial customers. We do have some semen stored on Heavy Duty. He is a non-certificate AI sire. If you are interested in semen, feel free to contact us.



DR WORLD CLASS 517 10H *SOD, CHB, DLF, HYF, IEF*

Reg. # P41000194

BD: 1/28/98

FELTONS 403
 FELTONS 517 *SOD, CHB, HYF*
 F PRINCESS A80 *DOD*

F 030 PROSPECT 208
 F T2 PROSPECTA 827
 FF PROSPECTOR 361
 FF PROSPECTITA 997 *DOD*

SBR MARATHON MAN 257T *SOD*
 VPI MARATHON LADY 0081
 BF LADY IMPACT S29

VERLOU MARATHON 26M 12P
 DJM SUPER GIRL 1071
 M TJ BANNER IMPACT *SOD*
 HHF VICKIE P508 M3

| CED | BW | WW | YW | Milk | M&G | REA | Marb. | BMI | CEZ | CHB |
|-----|-----|----|----|------|-----|------|-------|------|------|------|
| 4.2 | 2.7 | 60 | 91 | 35 | 65 | -.08 | .14 | \$23 | \$21 | \$27 |

A bull we purchased in his entirety from the Salunga dispersion in 1999 and later shared with Don Richardson, his original owner, and Virginia Tech. The semen and certificate sale rights were leased to Accelerated Genetics. It was a pleasure to share World Class with these partners. Several daughters, a top son, and his service sells. No AI certificate will be required for his calves born from cows that are selling.



LLL SPADE 106K *SOD, CHB*

Reg. # P42149331

BD: 12/28/00

REMITALL BOOMER 46B *SOD, CHB, DLF, HYF, IEF*
 MW LLL FARLEY 24F *SOD, CHB, DLF, HYF, IEF*
 MM MISS PACE 124

REMITALL KEYNOTE 20X *SOD, CHB*
 RMTLL SALLYS LASS 120X
 MM PACEMAKER 93
 MM GOLDEN GIRL 984

HHF CL DOMINO 614R 77U *SOD*
 DUNWALKE ROSIE D68 *DOD*
 DUNWALKE AMITY B39

BEARTOOTH BUTLER 614R
 HHF CL DOMINETTE 9N
 FPP FIRST PRIORITY 28U *SOD*
 DUNWALKE K REGINA 26Z

| CED | BW | WW | YW | Milk | M&G | REA | Marb. | BMI | CEZ | CHB |
|-----|-----|----|----|------|-----|-----|-------|------|------|------|
| 0.6 | 3.4 | 57 | 85 | 27 | 55 | .84 | .04 | \$19 | \$15 | \$29 |

A bull we purchased as a calf from Triple L Ranch that grew into an impressive sire. He ranks above breed average in all 15 EPD traits. Some daughters sell.



REFERENCE SIRES



KCF BENNETT 3008 M116 *CHB, DLF, HYF, IEF*

Reg. # P42267058

BD: 3/8/02

RRH MR FELT 3008 *SOD, CHB, DLF, HYF, IEF*
 FELTONS 517 *SOD, CHB, HYF*
 RRH MS VICT 6191

FELTONS 403
 F PRINCESS A80 *DOD*
 RHF VICTOR 767 2123
 RRH MS PROSP 786 *DOD*

KCF MISS 55R D202

BJH 51M LEADER 55R

BJH 25K PROSPCTR 51M *SOD*

KCF MISS 884 S182 *DOD*

BJH BRAX LINDA 43M
 RHF VICTOR 266 884
 KCF LADY VICTOR G36

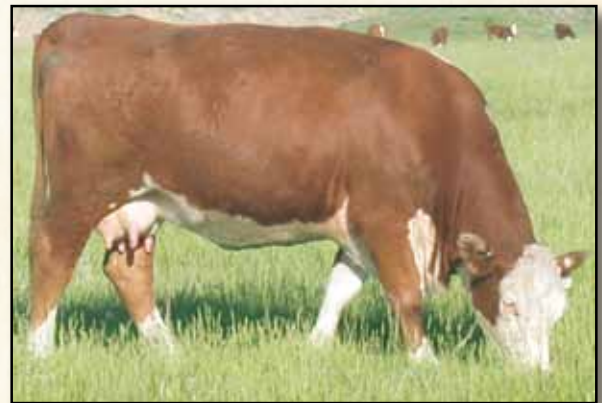
| CED | BW | WW | YW | Milk | M&G | REA | Marb. | BMI | CEZ | CHB |
|-----|-----|----|----|------|-----|------|-------|------|------|------|
| 1.0 | 3.6 | 67 | 99 | 28 | 61 | -.22 | .22 | \$27 | \$18 | \$31 |

A bull we purchased from Knoll Crest Farms that did a tremendous job for us. He was very deep ribbed and added pigment to his progeny. Both his daughters and sons were exceptional. A trait leader in all 11 traits. Several daughters and a few of his bull calves sell.



LCG Karla Franklin 119P

Daughter of LLL Spade 106K pictured as a Four year old.
 She sells as Lot 40.



LCG Karla Bennett 95R

Daughter of KCF Bennett 3008 M116 pictured as a three year old. She sells as Lot 54.



KCF BENNETT 440 P486

Reg. # P42570152

BD: 11/20/04

FELTONS LEXUS 235 *CHB*
FELTONS MARSHALL 440 *CHB*
 FELTONS ENDURETT K18

FELTONS BEAR 926 *SOD, DLF, HYF, IEF*
 FELTONS E70 *DOD*
 FELTONS ENDURANCE 745 *SOD, CHB, DLF, HYF, IEF*
 FELTONS MATRON H40

FELTONS DOMINO 774 *SOD, CHB, DLF, HYF, IEF*
KCF MISS 774 H332 *DOD*
 KCF MISS 459 F335

OXH DOMINO 7002 *SOD, CHB, DLF, HYF, IEF*
 FELTONS B72 *DOD*
 FELTONS 459
 KCF MISS Y132 A47

| CED | BW | WW | YW | Milk | M&G | REA | Marb. | BMI | CEZ | CHB |
|-----|-----|----|----|------|-----|------|-------|------|------|------|
| 1.0 | 2.4 | 53 | 71 | 28 | 54 | -.03 | .23 | \$23 | \$16 | \$25 |

A bull we purchased from Knoll Crest Farms. He is very thick and deep. His daughters have excellent milk flow and he adds pigment to his calves. Several daughters and his service sells.



REFERENCE SIRES



TAR Z5 CALL ME 2R

Reg. # P42614712

BD: 2/8/05

H 8E EMBRACER 8006 *CHB* H MISS APPROVAL 9082
 BRL CALL 100L *SOD, CHB, DLF, IEF* VLSF DELUXE ET 220W *SOD*
 BRL DELUXIE 100A *DOD* BRL BELLE 145S 10X

BRAXTON GIANT 1 *SOD* BRAXTON GIANT
 TAR Z5 MISS BRAXTON 28M BRAXTON BELLE 35
 TAR MISS Z5 VICTORY 22G ELWING TAR OPTION D52
 ELWING INNOVATRESS B42

| CED | BW | WW | YW | Milk | M&G | REA | Marb. | BMI | CEZ | CHB |
|------|-----|----|----|------|-----|-----|-------|------|------|------|
| -1.3 | 4.2 | 50 | 83 | 21 | 46 | .50 | .02 | \$13 | \$12 | \$24 |

A bull we purchased from Trent McMillan that was sired by the National Champion Bull, BRL Call 100L. He has a little different pedigree than most of our cow herd and he has done a commendable job for us. Several daughters sell.



RST 1030 TOP SECRET 5002

Reg. # P42626614

BD: 1/23/05

MJB BLAZER 1000 *SOD, CHB* CHURCHILL BANG 500 *SOD, CHB*
 KT TOP SECRET 1030 *SOD, CHB, DLF, HYF, IEF* MJB MS ACHIEVER 8108
 KT MS 517 FELTON 8031 *DOD* FELTONS 517 *SOD, CHB, HYF*
 MS RST X4 6002 MS RST X4 6002

LCG MASTER DUTY 51J *DLF, IEF* AH HEAVY DUTY 11G *SOD, CHB*
 RST MS 51J MASTER DUTY 3037 LCG KARLA BRU 129C *DOD, DLF, IEF*
 MS RST X4 08N 7039 *DOD* KCF VICTOR 08N X4 *SOD, CHB, DLF, HYF, IEF*
 MS RST 8884 0076

| CED | BW | WW | YW | Milk | M&G | REA | Marb. | BMI | CEZ | CHB |
|-----|-----|----|----|------|-----|-----|-------|------|------|------|
| 3.7 | 2.1 | 56 | 99 | 27 | 55 | .07 | .21 | \$24 | \$18 | \$29 |

A bull we purchased from Thomas Herefords. He is sired by the Top Secret bull that has exceptional EPDs and out of a first calf heifer that was sired by LCG Master Duty 51J that was purchased from us by ABS Global. The 51J bull was sired by our Heavy Duty bull and out of our 129C cow that we thought so much of and is so well represented in the Karla cow family. Several daughters sell.



DH HIGH TIME 87

Reg. # P42927925

BD: 2/11/08

JDF 16D WRANGLER 15 *SOD* NJW 5B WRANGLER 16D
 JDH 15 WRANGLER 25L *CHB, DLF, HYF, IEF* JDF MISS 223B 4E
 JDH MS LUTE 18J *DOD, DLF, IEF* WALSH MCCANN 680 46G *SOD*
 JDH MS WRANGLER 04

AH SPORTSMAN 14F *SOD* GK SPORTSMAN 41Y
 DH SPORXY JOSIE 255 *DOD* AH MS EXTRA 8B *DOD*
 DH IDAHO JOSIE 457 *DOD* EPHR PERFORMER 554D *SOD*
 DH JO WINNIE *DOD*

| CED | BW | WW | YW | Milk | M&G | REA | Marb. | BMI | CEZ | CHB |
|------|-----|----|----|------|-----|-----|-------|------|------|------|
| -0.2 | 5.1 | 50 | 85 | 24 | 49 | .59 | -.15 | \$11 | \$13 | \$21 |

A bull we purchased from Joyce Dubois that was sired by JDH 15 Wrangler 25L. His dam, two grandams, and two great grandams are all Dams of Distinction. Sire of several nice calves for us in 2011 that sell.



Mohican Plus 107M
 Dam of herd sire CBF SAH Opportunity Plus E121 ET.

REFERENCE SIRES



AH JDH CRACKER JACK 26U ET *DLF, HYF, IEF*

Reg. # P42924297

BD: 2/7/08

CIRCLE-D WRANGLER 832W *CHB, HYF*
 NJW 1Y WRANGLER 19D *SOD, CHB, HYF*
 NJW FROSTY 1Y

BAR H L1 CHANCE 55S
 CRCLC D193 SILHOUET 335S
 BT JR QUESTER 604M *SOD, DLF, HYF, IEF*
 NJW P183 003 NICKETTE 1W

SHF INTERSTATE 20X *SOD, CHB*
 CRR D03 VIOLET 349
 KJ 2410 VIOLET 392F

REMITALL KEYNOTE 20X *SOD, CHB*
 DR MISS D45 V100 *DOD*
 NJW Z17 VAQUERO 25C *SOD*
 KJ SDS MIS VICI 2410

| CED | BW | WW | YW | Milk | M&G | REA | Marb. | BMI | CEZ | CHB |
|-----|-----|----|----|------|-----|-----|-------|------|------|------|
| 4.5 | 2.3 | 49 | 75 | 20 | 45 | .35 | .21 | \$19 | \$19 | \$24 |

A bull owned by Atkins, Delaney and Hoffman, we chose to AI some of the cows to. He is sired by the Wrangler 19D bull and out of their popular Violet donor cow. His calves have been so consistent with excellent eye appeal. A non-certificate AI sire.



PCR 286 MR ADVISOR 502R *DLF, HYF, IEF*

Reg. # P42620083

BD: 2/9/05

RRH MR FELT 3008 *SOD, CHB, DLF, HYF, IEF*
 HUTH FULL HOUSE N003
 K HUTH ENHANTRESS K001

FELTONS 517 *SOD, CHB, HYF*
 RRH MS VICT 6191
 HUTH ENHANCER 2D *SOD, DLF, HYF, IEF*
 HUTH E-MALE'S LADY H026

PCR JACK PHROST 18K
 PCR JACKLYN NIKOLE 344N *DLF, IEF*
 PCR VICKI NICOLE 642F

NPH 512 THE STOCKER 10H *CHB*
 PCR PHRANCINE GAL 825H *DOD*
 KCF VICTOR 08N X4 *SOD, CHB, DLF, HYF, IEF*
 PCR NICOLE JOY 40B

| CED | BW | WW | YW | Milk | M&G | REA | Marb. | BMI | CEZ | CHB |
|-----|-----|----|-----|------|-----|-----|-------|------|------|------|
| 4.2 | 3.2 | 69 | 121 | 20 | 55 | .49 | .49 | \$32 | \$19 | \$48 |

A bull owned by Phil and Chris Rottman, Loewen Herefords and Sandhill farms we chose to AI some cows to. He has an outstanding EPD profile with all 15 traits well above breed average and nine of the 15 in the top 1% of the breed. We want to thank the owners of Advisor for giving us the opportunity to use him as he is now deceased with only a limited amount of semen available. A non-certificate AI sire.



BULLS



NJW 43T 4037 BORN READY 31X ET *DLF, HYF, IEF*

Reg. # P43094123

BD: 2/1/10

CS BOOMER 29F *SOD, CHB, DLF, HYF, IEF*
 THM DURANGO 4037 *CHB, DLF, HYF, IEF*
 THM 7085 VICTRA 9036 *DLF, HYF, IEF*

REMITALL BOOMER 46B *SOD, CHB, DLF, HYF, IEF*
 CS MISS 1ST FLAG 21A *DOD, DLF, IEF*
 THM VICTOR DOM 7085
 THM VICTRA 5404 7073

SHF RADAR M326 R125 *CHB, DLF, HYF, IEF*
 NJW FOREVER RADIANT 43T ET *DLF, IEF*
 NJW 57G 12E FOREVER 67M

KCF BENNETT 3008 M326 *CHB, DLF, HYF, IEF*
 SHF POSTIVE MISS 73C M15
 RU 20X BOULDER 57G *CHB*
 NJW 25C 1A VACA 12E



| CED | BW | WW | YW | Milk | M&G | REA | Marb. | BMI | CEZ | CHB |
|-----|-----|----|----|------|-----|-----|-------|------|------|------|
| 1.9 | 2.6 | 56 | 87 | 20 | 48 | .44 | .16 | \$19 | \$16 | \$30 |

It has been a pleasure to own this bull. Our only regret is that we won't see his calves born on this ranch. He is deep ribbed, thick, easy fleshing, with a super disposition. In addition he has proven to be very fertile with not only an excellent semen test as a yearling but he also produced an abundant amount of high quality semen at 14 months with his first collection. He also had a very big ribeye when scanned. Several females will carry his service. Selling 3/4 interest and full possession with approximately 80 straws of semen. Ned and Jan Ward will retain a 1/4 semen interest.



LCG MASTER CLASS 154W

Reg. # P42985831

BD: 3/12/09

DR WORLD CLASS 517 10H *SOD, CHB, DLF, HYF, IEF*
 VPI MARATHON LADY 0081

FELTONS 403
 F PRINCESS A80 *DOD*
 SBR MARATHON MAN 257T *SOD*
 BF LADY IMPACT S29

LCG MISS MEADOW 145N

CMF 413G ROCK SOLID 589L
 LCG FANCY MISS 117K
 CMF 103T VICTOR 262D *SOD*
 CMF 248D MISS 434V 413G
 LCG MASTER JACK 94G *SOD*
 LCG MISS MAIDEN 145F



| CED | BW | WW | YW | Milk | M&G | REA | Marb. | BMI | CEZ | CHB |
|-----|-----|----|----|------|-----|-----|-------|------|------|------|
| 3.3 | 3.6 | 52 | 80 | 27 | 53 | .03 | .11 | \$23 | \$19 | \$24 |

Our replacement for his sire, DR World Class 517 10H, that produced so well for us and so many others with his semen marketed by Accelerated Genetics. 154W is conservatively marked and freckle faced. We used him on yearling heifers as a yearling and were so pleased with his calving ease that we bred all the yearling heifers in the sale to him. His excellent dam will sell as Lot 154 along with her Traildust bull calf. Selling full interest and possession.

BULLS

**LOT
3**

NJW P20 31R PROGRESS 17T

Reg. # P42797868

BD: 2/2/07

FELTONS LEGEND 242 *SOD, CHB, HYF*
SHF PROGRESS P20 *CHB, DLF, HYF, IEF*
SHF INTERSTATE D03 G06 ET

FELTONS DOMINO 774 *SOD, CHB, DLF, HYF, IEF*
FELTONS G15
SHF INTERSTATE 20X D03 *SOD, CHB*
MM CISCO LADY 203 *DOD*

GHC NEVER LOOK BACK ET 30N
NJW 30N 63J NEVER MISS 31R
NJW 21C RIATA 63J

WTK 75A CONTINENTAL 66F *CHB*
WALPOLE PHILIS 13F
NJW 832W D32 LATIGO 45G
NJW Z17 RIATA 21C

| CED | BW | WW | YW | Milk | M&G | REA | Marb. | BMI | CEZ | CHB |
|-----|-----|----|----|------|-----|-----|-------|------|------|------|
| 7.9 | 1.1 | 54 | 80 | 19 | 46 | .52 | .22 | \$18 | \$20 | \$30 |

Purchased from Ned and Jan Ward as a yearling to be used on heifers. He has proven to be an excellent calving ease sire. Several cows in this sale will carry his service. We have been so pleased with his progeny. His first bull calf sold in our 2010 sale to Hoffman Herefords, Thedford, NE, for \$5,000. We have found that his greatest attribute may be his daughters. Selling full interest and possession.



**LOT
4**

CBF SAH OPPORTUNITY PLUS E121 ET

Reg. # P42920018

BD: 10/3/06



CMF 21E LOGAN 544K

DR ACHIEVER 8403 *SOD, DLF, HYF, IEF*

DL DOMINETTE 21E

KING TEN
DR ERICA 255
FHF CL DOMINO 614R 77U *SOD*
DL MIS DOM 243 560T *DOD*

MOHICAN PLUS 107M

MOHICAN EUREKA 67J *DLF, HYF, IEF*

MOHICAN PLUS 139J

MW EUREKA 421E 1ET
MOHICAN DEE M21E
BAR B MOHICAN HERITAGE *SOD*
MOHICAN PLUS M12E

| CED | BW | WW | YW | Milk | M&G | REA | Marb. | BMI | CEZ | CHB |
|-----|-----|----|----|------|-----|-----|-------|------|------|------|
| 0.3 | 3.8 | 51 | 76 | 23 | 48 | .14 | .12 | \$15 | \$14 | \$22 |

Purchased for his outstanding dam, Mohican Plus 107M, and we also thought a lot of his sire, the Logan bull, from Candy Meadow Farms. He is proving to be a great breeding bull as evidenced by his progeny in the sale. Several females will carry his service.

Selling 1/2 interest with full possession. Henderson Farms, Manor, GA, and Camp Branch Farms, Manor, GA, will each retain a 1/4 semen interest.

**LOT
5**

HVH PROGRESS 4L 30S *DLF, HYF, IEF*

Reg. # P42691474

BD: 2/23/06

FELTONS LEGEND 242 *SOD, CHB, HYF*
SHF PROGRESS P20 *CHB, DLF, HYF, IEF*
SHF INTRSTATE D03 G06 ET

FELTONS DOMINO 774 *SOD, CHB, DLF, HYF, IEF*
FELTONS G15
SHF INTERSTATE 20X D03 *SOD, CHB*
MM CISCO LADY 203 *DOD*

GK GENETIC EXPLOSION *SOD, CHB, DLF, HYF, IEF*
HVH GENETIC QUEEN 53H 4L *DLF, HYF, IEF*
HVH MISS 512 35D 53H

EXPLOSION *DLF, HYF, IEF*
GK QUEEN TEN 391L
MM RSM STOCKMASTER 512 *SOD, CHB, DLF, HYF, IEF*
HVH REBA 35D

| CED | BW | WW | YW | Milk | M&G | REA | Marb. | BMI | CEZ | CHB |
|-----|-----|----|----|------|-----|-----|-------|------|------|------|
| 6.3 | 1.8 | 56 | 83 | 19 | 48 | .27 | .24 | \$22 | \$19 | \$29 |

From the John and Mona Loewen herd in Oklahoma. His dam has been one of their top donor cows. 30S is super thick and deep bodied, a real beef bull. We used him successfully on heifers. He has some very nice progeny in the sale. Don't miss his two year old daughters. His first son sold in our 2011 sale for \$4,900 to Victor Jones, Sundance, WY. Several females will carry his service.

Selling full possession and interest.



BULLS



NJW 47P 167L DIRECTION 41S *DLF, HYF, IEF*

Reg. # 42694073 • Scurred

BD: 2/19/06

NJW 139J DUSTER 47P *CHB, DLF, IEF*
 RU DUSTER 60D *CHB*
 SDL VLY 7C SERENADE 139J

REMITALL KEYNOTE 20X *SOD, CHB*
 RU SARA 60X
 KLNDIKE 500Z FEDRTION 7C
 SVR 393Y SUNRISE 326F

NJW 45G LADYSPORT 167L
 NJW 832W D32 LATIGO 45G
 GK LADYSPORT 131A

CIRCLE-D WRANGLER 832W *CHB, HYF*
 JR Y53 WILMA D32
 GK SPORTSMAN 41Y
 GK BONNY 1027



| CED | BW | WW | YW | Milk | M&G | REA | Marb. | BMI | CEZ | CHB |
|-----|-----|----|----|------|-----|-----|-------|------|------|------|
| 0.7 | 1.4 | 42 | 65 | 17 | 38 | .61 | -.11 | \$18 | \$16 | \$17 |

Scurred. Selected not only as an outstanding individual but mainly for his impeccable dam. His daughters have not disappointed us. His first son sold in our 2010 sale for \$7,000 to Arnold Sheriff, Orient, IA, and Jim Clark, Mercer, MO. He is well represented in the sale offering and several of the females will carry his service.
 Selling full possession and interest.



NJW BW TRAILDUST 161L *CHB*

Reg. # P42192163

BD: 4/27/01

NJW 6Z WRANGLER 20E *HYF*
 CIRCLE-D WRANGLER 832W *CHB, HYF*
 CJ 3W MISS 6Z

BAR H L1 CHANCE 55S
 CRCLE D193 SILHOUET 335S
 NJW BUTLERS IMAGE 3W
 C MISS ANX APEX 70L *DOD*

SADDLE VLY LADYSPORT 120
 RU DUSTER 60D *CHB*
 GK LADYSPORT 131A

REMITALL KEYNOTE 20X *SOD, CHB*
 RU SARA 60X
 GK SPORTSMAN 41Y
 GK BONNY 1027



| CED | BW | WW | YW | Milk | M&G | REA | Marb. | BMI | CEZ | CHB |
|-----|-----|----|----|------|-----|-----|-------|------|------|------|
| 2.1 | 3.4 | 51 | 83 | 21 | 46 | .54 | -.14 | \$17 | \$16 | \$23 |

Traildust was impressive as a calf when he stood with his outstanding dam at the 2002 Denver National when they were named Grand Champion Cow-Calf. We were able to purchase him in 2008 from Ned and Jan Ward. He is still very actively breeding cows in the pasture in 2011. Offered in our sale will be two year old and yearling heifers plus a group of 2011 calves. He was the sire of our top selling bull in our 2011 sale that sold to Woodcrest Farms, Cresbard, SD, for \$8,100. He was also the sire of our top selling heifer in our 2010 sale that sold to Gail Williams, Presho, SD for \$4,200. Several of the females will carry his service.
 Selling will be 1/2 interest with full possession with only in-herd semen rights. All semen sale rights will be retained by Ned and Jan Ward, Sheridan, WY, and Moonlight Ranch, Kuna, ID, with each retaining a 1/4 semen interest.



Saddle Vly Ladysport 120 and NJW BW Traildust 161L
 Grand Champion Cow-Calf Pair, 2002 National Western Stock Show.