

J Delaney
HEREFORDS **ATKINS**
HEREFORDS

SPRING BULL SALE



2012 Reserve Grand Champion Carload

MONDAY, APRIL 2, 2012 • 1:00PM
DELANEY HEREFORDS SALE BARN
LAKE BENTON, MINNESOTA
JIM BIRDWELL, AUCTIONEER



*Selling Herefords & Red Angus
with Guest Consignor:*

ARAWAY
RED ANGUS
RANCH

www.delaneyherefords.com

•• MONDAY, APRIL 2, 2012 AT 1:00PM ••

Lunch beginning at 11:30AM

•• SALE DAY CONTACTS ••

| | |
|---------------------|--------------|
| Sale Day Phone..... | 507/368-9284 |
| Jerry Cell..... | 507/820-0661 |
| Pete Cell..... | 605/351-9847 |
| Marty Cell..... | 507/820-0483 |
| Michael Cell..... | 507/820-0493 |
| Jon Cell..... | 507/530-3166 |

•• SALE STAFF ••

| | |
|--|--------------|
| Jim Birdwell, Auctioneer..... | 580-695-2352 |
| Art Handel, Handel Marketing..... | 605/391-8233 |
| Levi Landers, American Hereford Association..... | 308/730-1396 |
| Marc & Jill Hotchkiss, Hereford America..... | 605/490-1409 |
| JT Weber, Special Assignment..... | 507/368-9560 |
| Steve Wolf, Special Assignment..... | 701/710-1574 |
| Scott McGee, M&M Livestock Service..... | 402-300-2659 |

•• SPECIAL GUESTS ••

| | |
|--|---|
| Jill Hotchkiss..... | Hereford America |
| Larry Goelz, Pipestone Vet Clinic..... | Herd Veterinarian |
| Keith Fawcett..... | Director, American Hereford Association |
| Fred Larson..... | Director, American Hereford Association |
| Mike Fink..... | President, SD Hereford Association |
| Phil Eggers..... | Manager, SD Hereford Association |
| Jim Hanson..... | President, MN Hereford Breeders |

•• SALE TERMS & CONDITIONS ••

Terms - Terms of the sale are cash or check payable during or after the sale and before cattle will be released. Cattle will not be transferred until paid in full. Each animal will be at the buyer's risk immediately after the animal is sold.

Guarantee - All bulls have been semen tested and examined to be sound and guaranteed breeders. If an animal fails to breed and is reported to seller by August 1, 2012, it may be returned to seller if in good condition and in compliance with Minnesota health regulations. Once the bull has been returned to the seller and confirmed that he is not a breeder, the seller will refund the purchase price.

Conference Call Bidding - If you would like to place a bid but are unable to attend the sale, feel free to contact any of the owners or sale staff. Real time bidding will be available via conference call during the sale by calling **605-693-2663** and when prompted for a conference call pass code, enter **30084**. Please call prior to the sale to register for a buyer number. You may stay on the line as long as you wish.

Herd Health - All cattle will be sold in compliance with the health laws of the State of Minnesota. Health papers will be provided.

Discount - Haul your own bull the day of the sale and receive a \$50 discount. Leave bulls with seller on feed for \$2.00 per day and pick them up when you want them. Animals left will be at the buyer's risk and we recommend purchasing insurance. Contact Art Handel the day of sale to purchase insurance.

Registration Certificates - The animals will be transferred to the buyer at the seller's expense. Each buyer must be sure to give the clerk the proper name and address for making transfers.

EPDs - EPDs listed in the catalog are the most current available at time of catalog printing. Carcass data, current weights, scrotal measurements and WDA available on sale day.

Please Note - All persons who attend the sale do so at their own risk. Owners assume no liability, legal or otherwise, for accidents or loss of property that may occur.

HEREFORD YEARLINGS

Lot
1Y

JDH AH 158W 349 1Y ET

| REG # 43177750 | ACTUAL BW | ADJ. 205 | WW RATIO | SALE WEIGHTS & SCAN DATA |
|-----------------|-----------|----------|----------|--------------------------|
| CALVED: 1/31/11 | 88 lbs. | 854 lbs. | ET | AVAILABLE SALE DAY. |



| | |
|------|-------|
| BW | 5.9 |
| WW | 59 |
| YW | 91 |
| MILK | 21 |
| M&G | 50 |
| FAT | 0.005 |
| REA | 0.38 |
| MARB | -0.08 |
| CHB | \$22 |

STAR BRIGHT FUTURE 533P ET
STAR TCF SHOCK & AWE 158W ET (P42971547)
 MSU APOLLONIA 10M

SHF INTERSTATE 20X D03
CRR D03 VIOLET 349 (P42428481)
 KJ 2410 VIOLET 392F

REMITALL ONLINE 122L
 RB L1 DOMINETTE 8116
 SHF INTERSTATE 20X D03
 APOLLONIA OF BAR B 748
 REMITALL KEYNOTE 20X
 DR MISS D45 V100
 NJW Z17 VAQUERO 25C
 KJ SDS MIS VICI 2410

- Here is a son of the great Violet cow sired by 2 time Denver Supreme Champion Shock & Awe.
- The heaviest 205 day weight in the sale, this bull has as much substance, mass and volume as any you will find. He will sire calves with performance. His yearling weight EPD ranks in the top 10% of the breed.
- Here is a unique genetic package that is sure to catch your eye.
- Retaining a 1/4 semen interest.

Lot
3Y

JDH AH 719T 3Y ET

| REG # 43177751 | ACTUAL BW | ADJ. 205 | WW RATIO | SALE WEIGHTS & SCAN DATA |
|----------------|-----------|----------|----------|--------------------------|
| CALVED: 2/1/11 | 82 lbs. | 713 lbs. | ET | AVAILABLE SALE DAY. |



| | |
|------|-------|
| BW | 2.5 |
| WW | 64 |
| YW | 87 |
| MILK | 20 |
| M&G | 52 |
| FAT | 0.000 |
| REA | 0.60 |
| MARB | -0.10 |
| CHB | \$28 |

DRF JWR PRINCE VICTOR 711
TH 122 711 VICTOR 719T (P42800895)
 KBCR 19D DOMINETTE 122

SHF INTERSTATE 20X D03
CRR D03 VIOLET 349 (P42428481)
 KJ 2410 VIOLET 392F

HRP THM VICTOR 109W 9329
 RHF 964 VICTRA 4057
 NJW 1Y WRANGLER 19D
 KBCR DOMINETTE 9112
 REMITALL KEYNOTE 20X
 DR MISS D45 V100
 NJW Z17 VAQUERO 25C
 KJ SDS MIS VICI 2410

- Sired by 719T and out of Violet, what a combination!
- Balance, mass, volume and performance to go along with a low birth weight EPD and great growth, REA and CHB numbers.
- Member of our 2012 Denver Reserve Grand Champion Carload.
- His full brother sells as lot 6Y.

**Lot
6Y**

JDH AH 719T 6Y ET

| | | | | |
|-----------------------|------------------|-----------------|-----------------|---|
| REG # 43177752 | ACTUAL BW | ADJ. 205 | WW RATIO | SALE WEIGHTS & SCAN DATA AVAILABLE SALE DAY. |
| CALVED: 2/2/11 | 92 lbs. | 812 lbs. | ET | |



| | |
|----------------|--------------|
| BW | 2.5 |
| WW | 64 |
| YW | 87 |
| MILK | 20 |
| M&G | 52 |
| FAT | 0.000 |
| REA | 0.60 |
| MARB | -0.10 |
| CHB | \$28 |

DRF JWR PRINCE VICTOR 711
TH 122 711 VICTOR 719T (P42800895)
 KBCR 19D DOMINETTE 122

SHF INTERSTATE 20X D03
CRR D03 VIOLET 349 (P42428481)
 KJ 2410 VIOLET 392F

HRP THM VICTOR 109W 9329
 RHF 964 VICTRA 4057
 NJW 1Y WRANGLER 19D
 KBCR DOMINETTE 9112
 REMITALL KEYNOTE 20X
 DR MISS D45 V100
 NJW Z17 VAQUERO 25C
 KJ SDS MIS VICI 2410

- Here is a top herd bull prospect! A goggle eyed son of 719T out of our great donor dam Violet. Violet is the dam of Cracker Jack, AH Yankee, several Denver Sale entries and lead cattle in our Denver pens.
- This bull has the performance, eye appeal and numbers to meet the needs of the most discriminating breeder! A low birth weight EPD plus a yearling EPD in the top 20% of the breed, REA in the top 5% and CHB in the top 10%. Here is an opportunity to get in on the ground floor of an exciting prospect!
- Retaining a 1/4 semen interest.
- His full brother sells as Lot 3Y.

**Lot
8Y**

JDH 117R RIBEYE 8Y ET

| | | | | |
|-----------------------|------------------|-----------------|-----------------|---|
| REG # 43177703 | ACTUAL BW | ADJ. 205 | WW RATIO | SALE WEIGHTS & SCAN DATA AVAILABLE SALE DAY. |
| CALVED: 2/4/11 | 90 lbs. | 796 lbs. | ET | |



| | |
|----------------|---------------|
| BW | 3.3 |
| WW | 46 |
| YW | 72 |
| MILK | 27 |
| M&G | 50 |
| FAT | -0.014 |
| REA | 0.42 |
| MARB | 0.11 |
| CHB | \$24 |

KCF BENNETT 3008 M326
SHF RIB EYE M326 R117 (P42584003)
 HVH MISS HUDSON 83K 8M

PW VICTOR BOOMER P606
JDH MS P606 BOOMER 20R (P42576246)
 JDH MS ONLINE 13N

RRH MR FELT 3008
 KCF MISS 459 F284
 MSU MF HUDSON 19H
 SUN VINDY MISS 83K
 REMITALL BOOMER 46B
 PW VICTORIA 964 8114
 REMITALL ONLINE 122L
 JDH MS 4B EXCEED 23G

- A son of Rib Eye out of the P606 donor cow 20R.
- A well balanced bull with good length and style and a pedigree that will work.
- If you are looking for replacement females this bull has a milk EPD of 27 which puts him in the top 5% of the breed!

Lot
11Y

JDH 117R RIBEYE 11Y ET

REG # 43177705 ACTUAL BW ADJ. 205 WW RATIO SALE WEIGHTS & SCAN DATA
 CALVED: 2/5/11 89 lbs. 633 lbs. 95 AVAILABLE SALE DAY.

KCF BENNETT 3008 M326
SHF RIB EYE M326 R117 (P42584003)
 HVH MISS HUDSON 83K 8M

PW VICTOR BOOMER P606
JDH MS P606 BOOMER 20R (P42576246)
 JDH MS ONLINE 13N

RRH MR FELT 3008
 KCF MISS 459 F284
 MSU MF HUDSON 19H
 SUN VINDY MISS 83K
 REMITALL BOOMER 46B
 PW VICTORIA 964 8114
 REMITALL ONLINE 122L
 JDH MS 4B EXCEED 23G

| BW | WW | YW | MILK | M&G | FAT | REA | MARB | CHB |
|-----|----|----|------|-----|--------|------|------|------|
| 3.3 | 45 | 71 | 27 | 50 | -0.014 | 0.41 | 0.11 | \$23 |

- Another stout son of Rib Eye out of 20R.
- This mating has proven to be an excellent combination as evidenced by this bull.
- He will produce sons and daughters that will work in the commercial beef business!

Lot
14Y

JDH 26U CRACKER JACK 14Y ET

REG # 43173639 ACTUAL BW ADJ. 205 WW RATIO SALE WEIGHTS & SCAN DATA
 CALVED: 2/5/11 85 lbs. 620 lbs. 93 AVAILABLE SALE DAY.

NJW 1Y WRANGLER 19D
AH JDH CRACKER JACK 26U ET (P42924297)
 CRR D03 VIOLET 349

PW VICTOR BOOMER P606
JDH MS P606 BOOMER 20R (P42576246)
 JDH MS ONLINE 13N

CIRCLE-D WRANGLER 832W
 NJW FROSTY 1Y
 SHF INTERSTATE 20X D03
 KJ 2410 VIOLET 392F
 REMITALL BOOMER 46B
 PW VICTORIA 964 8114
 REMITALL ONLINE 122L
 JDH MS 4B EXCEED 23G

| BW | WW | YW | MILK | M&G | FAT | REA | MARB | CHB |
|-----|----|----|------|-----|-------|------|------|------|
| 2.9 | 38 | 62 | 24 | 43 | 0.028 | 0.38 | 0.08 | \$17 |

- Another son of the great 20R donor that has left us with so many good calves.
- He is sired by Cracker Jack and is very complete in his balance and structure.
- His birth EPD of 2.9 is well below breed average and his Milk EPD is in the top 15%.
- This is the kind that will produce cattle that will work.

Lot
15Y

JDH 7W TAILOR 15Y ET

REG # 43177784 ACTUAL BW ADJ. 205 WW RATIO SALE WEIGHTS & SCAN DATA
 CALVED: 2/5/11 95 lbs. 690 lbs. ET AVAILABLE SALE DAY.

HARVIE TRAVELER 69T
HARVIE TAILOR MADE ET 7W (P43164954)
 HARVIE MISS FIREFLY 51F

JDH 100M BOULDER 11P
JDH MS 11P BOULDER 39S (P42706857)
 JDH MS ISSACS 075 16P

KAIRURU ABERDEEN 03 0047
 HARVIE PEARL 129P
 HARVIE DEYNOTE 61D
 HARVIE MISS NYLON 1Y
 NJW 57G 12E VALUE 100M
 JDH MS BEAU VICTOR 30K
 ISAACS 517 075
 FH MS GEN DOM 607

| BW | WW | YW | MILK | M&G | FAT | REA | MARB | CHB |
|-----|----|----|------|-----|--------|------|-------|------|
| 5.3 | 56 | 89 | 21 | 49 | -0.008 | 0.49 | -0.07 | \$24 |

- A goggle eyed son of Harvie Tailor Made.
- His mother is a Dam of Distinction and a proven producer both on her own and in our ET program.
- Here is a stout made bull with lots of pigment and high growth and milk numbers.

Lot
11Y

JDH 117R RIBEYE 11Y ET

REG # 43177718

ACTUAL BW

ADJ. 205

WW RATIO

SALE WEIGHTS & SCAN DATA
AVAILABLE SALE DAY.

CALVED: 2/7/11

75 lbs.

655 lbs.

99



| | |
|------|--------|
| BW | 1.3 |
| WW | 43 |
| YW | 65 |
| MILK | 27 |
| M&G | 49 |
| FAT | -0.009 |
| REA | 0.41 |
| MARB | 0.13 |
| CHB | \$22 |

KCF BENNETT 3008 M326
SHF RIB EYE M326 R117 (P42584003)
HVH MISS HUDSON 83K 8M

PW VICTOR BOOMER P606
JDH MS P606 BOOMER 20R (P42576246)
JDH MS ONLINE 13N

RRH MR FELT 3008
KCF MISS 459 F284
MSU MF HUDSON 19H
SUN VINDY MISS 83K
REMITALL BOOMER 46B
PW VICTORIA 964 8114
REMITALL ONLINE 122L
JDH MS 4B EXCEED 23G

- Here is a horned son of Rib Eye out of the P606 daughter 20R who is a foundation female for us. She is a prolific producer who consistently raises our top calves.
- This bull has as much muscle expression and thickness as any bull we have had.
- Combine that with a BW EPD of 1.3, a Milk EPD of 27 and excellent marbling and REA numbers and you have a top herd bull prospect.
- This bull drew a lot of attention as a member of our Reserve Grand Champion Carload in Denver and you can see why!

Lot
19Y

JDH 117R RIBEYE 19Y ET

REG # 43177720

ACTUAL BW

ADJ. 205

WW RATIO

SALE WEIGHTS & SCAN DATA
AVAILABLE SALE DAY.

CALVED: 2/7/11

94 lbs.

814 lbs.

ET



| | |
|------|--------|
| BW | 3.3 |
| WW | 46 |
| YW | 72 |
| MILK | 27 |
| M&G | 50 |
| FAT | -0.014 |
| REA | 0.42 |
| MARB | 0.11 |
| CHB | \$24 |

KCF BENNETT 3008 M326
SHF RIB EYE M326 R117 (P42584003)
HVH MISS HUDSON 83K 8M

PW VICTOR BOOMER P606
JDH MS P606 BOOMER 20R (P42576246)
JDH MS ONLINE 13N

RRH MR FELT 3008
KCF MISS 459 F284
MSU MF HUDSON 19H
SUN VINDY MISS 83K
REMITALL BOOMER 46B
PW VICTORIA 964 8114
REMITALL ONLINE 122L
JDH MS 4B EXCEED 23G

- A full brother to lots 8Y, 11Y, 17Y and 70Y, this son of Rib Eye is out of our 20R donor cow.
- Great style, thickness and length in one of our heaviest weaning calves, he also has excellent milk and carcass numbers.
- Due to injury he was dehorned in mid-December.

JDH MS P606 BOOMER 20R



- Donor dam and one of the greatest cows to ever walk the pastures at Delaney Herefords!
- A consistent producer who has mated well with everything she has been bred to.
- You have an opportunity to purchase her sons who sell as lots 8Y, 11Y, 14Y, 17Y, 19Y, 26Y, 70Y, 71Y and 62X.

Lot
26Y

JDH 26U CRACKER JACK 26Y ET

REG # 43173640

ACTUAL BW

ADJ. 205

WW RATIO

SALE WEIGHTS & SCAN DATA
AVAILABLE SALE DAY.

CALVED: 2/10/11

90 lbs.

779 lbs.

ET



| | |
|------|-------|
| BW | 3.8 |
| WW | 43 |
| YW | 68 |
| MILK | 24 |
| M&G | 46 |
| FAT | 0.028 |
| REA | 0.42 |
| MARB | 0.08 |
| CHB | \$19 |

NJW 1Y WRANGLER 19D
AH JDH CRACKER JACK 26U ET (P42924297)
CRR D03 VIOLET 349

PW VICTOR BOOMER P606
JDH MS P606 BOOMER 20R (P42576246)
JDH MS ONLINE 13N

CIRCLE-D WRANGLER 832W
NJW FROSTY 1Y
SHF INTERSTATE 20X D03
KJ 2410 VIOLET 392F
REMITALL BOOMER 46B
PW VICTORIA 964 8114
REMITALL ONLINE 122L
JDH MS 4B EXCEED 23G

- This could be the best son of Cracker Jack that we have produced!
- His full sister, 9Y, was a member of our Denver pen of 3 heifers. His dam is our 20R donor cow that has been an outstanding producer and her daughters are now making great cows. Plus combine that with the influence of Violet!
- We cannot say enough about the impact these females have had on our program and this bull could have that same kind of impact on your herd. This calf has the style, balance and performance to be a top herd bull that will leave you with great females!
- He was our lead bull in our Reserve Grand Champion Carload in Denver.
- Retaining a 1/4 semen interest.

SPRING 2012 BREED AVERAGE EPD'S

| BW | WW | YW | MILK | M&G | FAT | REA | MARB | CHB |
|-----|----|----|------|-----|-------|------|------|------|
| 3.6 | 44 | 73 | 17 | 39 | 0.001 | 0.25 | 0.04 | \$20 |

Lot
27Y

JDH 7W TAILOR 27Y

| | | | | |
|-----------------|-----------|----------|----------|---|
| REG # 43177836 | ACTUAL BW | ADJ. 205 | WW RATIO | SALE WEIGHTS & SCAN DATA AVAILABLE SALE DAY. |
| CALVED: 2/10/11 | 93 lbs. | 689 lbs. | 101 | |



| | |
|------|-------|
| BW | 4.6 |
| WW | 47 |
| YW | 79 |
| MILK | 24 |
| M&G | 48 |
| FAT | 0.000 |
| REA | 0.29 |
| MARB | 0.10 |
| CHB | \$22 |

HARVIE TRAVELER 69T
HARVIE TAILOR MADE ET 7W (P43164954)
HARVIE MISS FIREFLY 51F

K&B RED FELTON 5162
JDH MS 5162 RED FELTON 44T (P42826119)
R MISS PATEND 1770

KAIRURU ABERDEEN 03 0047
HARVIE PEARL 129P
HARVIE DEYNOTE 61D
HARVIE MISS NYLON 1Y
KCF BENNETT 3008 M326
K&B DOMINETTE 2318
R PATEND 317
R MISS MAJOR 1246

- Here is a son of Tailor Made that will get your attention!
- His dam is a great young cow and also the dam of JDH 26U Cracker Jack 54X who sold in the 2011 Denver sale to Schutte & Sons and Spring Hill Hereford Farms.
- Great extension and growth to go along with goggle red eyes in this top herd bull prospect. This calf was the pick of many visitors last summer.



DELANEY HEREFORDS / ATKINS HEREFORDS GENETIC OPPORTUNITY SALE 2012

SATURDAY, SEPTEMBER 8, 2012

DELANEY HEREFORDS SALE BARN

Featuring heifer calves, cow/calf pairs and bred heifers carrying services of Cracker Jack, Redeem and Perfect Timing.

LIKE US ON FACEBOOK OR WATCH OUR WEBSITE FOR DETAILS!



Like us on
Facebook

www.facebook.com/delaneyherefords

www.facebook.com/atkinsherefords

www.delaneyherefords.com

Lot
35Y

JDH 7W TAILOR 35Y

REG # 43177835 ACTUAL BW ADJ. 205 WW RATIO SALE WEIGHTS & SCAN DATA
 CALVED: 2/16/11 83 lbs. 687 lbs. 101 AVAILABLE SALE DAY.

HARVIE TRAVELER 69T
HARVIE TAILOR MADE ET 7W (P43164954)
 HARVIE MISS FIREFLY 51F

JDH 100M BOULDER 11P
JDH MS 11P BOULDER 37T (P42826130)
 JDH MS ISAACS 075 68N

KAIRURU ABERDEEN 03 0047
 HARVIE PEARL 129P
 HARVIE DEYNOTE 61D
 HARVIE MISS NYLON 1Y
 NJW 57G 12E VALUE 100M
 JDH MS BEAU VICTOR 30K
 ISAACS 517 075
 JDH MS 4B EXCEED 7G

| BW | WW | YW | MILK | M&G | FAT | REA | MARB | CHB |
|-----|----|----|------|-----|-------|------|-------|------|
| 3.4 | 48 | 78 | 20 | 44 | 0.006 | 0.31 | -0.07 | \$19 |

- A Tailor Made son out of a Boulder daughter.
- This calf has a lot of natural thickness plus the pigment that is in demand today.



•• 2012 Mile High Night National Hereford Sale ••

Lot
36Y

JDH 26U CRACKER JACK 36Y

REG # 43173897 ACTUAL BW ADJ. 205 WW RATIO SALE WEIGHTS & SCAN DATA
 CALVED: 2/17/11 85 lbs. 798 lbs. 117 AVAILABLE SALE DAY.

NJW 1Y WRANGLER 19D
AH JDH CRACKER JACK 26U ET (P42924297)
 CRR D03 VIOLET 349

AH YANKEE 10S
JDH MS 10S YANKEE 86W (P43006870)
 JDH MS P606 BOOMER 20R

CIRCLE-D WRANGLER 832W
 NJW FROSTY 1Y
 SHF INTERSTATE 20X D03
 KJ 2410 VIOLET 392F
 REMITALL ONLINE 122L
 CRR D03 VIOLET 349
 PW VICTOR BOOMER P606
 JDH MS ONLINE 13N

| BW | WW | YW | MILK | M&G | FAT | REA | MARB | CHB |
|-----|----|----|------|-----|-------|------|------|------|
| 4.4 | 57 | 91 | 24 | 53 | 0.020 | 0.59 | 0.09 | \$28 |

- Here is a Cracker Jack son out of a first calf heifer who is a daughter of Yankee and out of our 20R donor cow.
- The Yankee daughters are doing a great job as evidenced here. Talk about cow power in a pedigree!
- This calf is double bred to Violet and also goes back to 20R. He should sire great females plus he has outstanding EPDs for growth, milk and carcass.

Lot
39Y

UNREGISTERED

| UNREGISTERED | ACTUAL BW | ADJ. 205 | WW RATIO | SALE WEIGHTS & SCAN DATA |
|------------------------|-----------|----------|----------|--------------------------|
| CALVED: 2/18/11 | 105 lbs. | 738 lbs. | ET | AVAILABLE SALE DAY. |

STAR BRIGHT FUTURE 533P ET
STAR TCF SHOCK & AWE 158W ET (P42971547)
 MSU APOLLONIA 10M

REMITALL EMBRACER 8E
AH QUEEN BELLE 14R (P42625219)
 AH MS BANNER QUEEN 19H

REMITALL ONLINE 122L
 RB L1 DOMINETTE 8116
 SHF INTERSTATE 20X D03
 APOLLONIA OF BAR B 748
 REMITALL ACME 10A
 PLAIN LAKE BELLE 20X 117P 5B
 AH BANNER KING 13F
 FPH NEW EDITION D202

| BW | WW | YW | MILK | M&G | FAT | REA | MARB | CHB |
|-----|----|----|------|-----|--------|------|------|------|
| 6.8 | 56 | 90 | 17 | 45 | -0.007 | 0.20 | 0.10 | \$25 |

- A full brother to Lot 72Y, EPD's estimated.
- He is a son of Shock & Awe out of our 8E donor cow now owned by Ned and Jan Ward.
- This calf is loaded with muscle and performance. He is a full brother to our high selling heifer in Denver this year.
- This calf is unregistered but will be registered if sold into a purebred herd.

Lot
40Y

JDH 533P BRIGHT FUTURE 40Y

| REG # 43182816 | ACTUAL BW | ADJ. 205 | WW RATIO | SALE WEIGHTS & SCAN DATA |
|------------------------|-----------|----------|----------|--------------------------|
| CALVED: 2/18/11 | 87 lbs. | 675 lbs. | 99 | AVAILABLE SALE DAY. |



| | |
|------|-------|
| BW | 4.1 |
| WW | 53 |
| YW | 86 |
| MILK | 24 |
| M&G | 50 |
| FAT | 0.011 |
| REA | 0.23 |
| MARB | 0.06 |
| CHB | \$23 |

REMITALL ONLINE 122L
STAR BRIGHT FUTURE 533P ET (P42483846)
 RB L1 DOMINETTE 8116

NJW 1Y WRANGLER 19D
AH JDF MS 19D VIOLET 3T ET (P42828757)
 CRR D03 VIOLET 349

REMITALL EMBRACER 8E
 REMITALL CATALINA 24H
 RB L1 DOMINO 4067
 RB L1 BRIGHTNES 0058
 CIRCLE-D WRANGLER 832W
 NJW FROSTY 1Y
 SHF INTERSTATE 20X D03
 KJ 2410 VIOLET 392F

- Here is a star studded pedigree.
- A son of the many time champion Bright Future and out of a full sister to Cracker Jack.
- An eye catching bull that is clean fronted and has the look.

•• AVERAGE EPDs OF SALE BULLS ••

| BW | WW | YW | MILK | M&G | FAT | REA | MARB | CHB |
|-----|----|----|------|-----|-------|------|------|------|
| 4.1 | 51 | 81 | 23 | 48 | 0.005 | 0.41 | 0.05 | \$24 |

•• 2012 BREED AVERAGE EPDs ••

| BW | WW | YW | MILK | M&G | FAT | REA | MARB | CHB |
|-----|----|----|------|-----|-------|------|------|------|
| 3.6 | 44 | 73 | 17 | 39 | 0.001 | 0.25 | 0.04 | \$20 |

•• PERCENTILE RANK OF SALE BULLS ••

| BW | WW | YW | MILK | M&G | FAT | REA | MARB | CHB |
|-----|-----|-----|------|-----|-----|-----|------|-----|
| 60% | 25% | 30% | 20% | 20% | 60% | 20% | 40% | 25% |

This bull produces better mamas, not headaches



There's no mama like a Hereford-sired mama. Net income of \$51 more per cow per year and a 7% advantage in conception rate, compared to straight Angus females.* All this from a bull that is known for its fertility and easy-going nature. Hereford bulls — better mamas and no headaches.

Hereford — *gentle bulls* making black better.



P.O. Box 014059
Kansas City, MO 64101
816.842.3757
www.hereford.org

Lot
47Y

JDH 26U CRACKER JACK 47Y

| REG # 43173902 | ACTUAL BW | ADJ. 205 | WW RATIO | SALE WEIGHTS & SCAN DATA |
|-----------------|-----------|----------|----------|--------------------------|
| CALVED: 2/23/11 | 87 lbs. | 691 lbs. | 102 | AVAILABLE SALE DAY. |



| | |
|------|-------|
| BW | 2.2 |
| WW | 45 |
| YW | 70 |
| MILK | 23 |
| M&G | 45 |
| FAT | 0.009 |
| REA | 0.30 |
| MARB | 0.04 |
| CHB | \$21 |

NJW 1Y WRANGLER 19D
AH JDH CRACKER JACK 26U ET (P42924297)
CRR D03 VIOLET 349

ISAACS 517 075
JDF MS ISAACS 075 60N (P42406404)
JDF MISS 223B 4E

CIRCLE-D WRANGLER 832W
NJW FROSTY 1Y
SHF INTERSTATE 20X D03
KJ 2410 VIOLET 392F
FELTONS 517
OZ MACK LIZ 75H
IHRY J&D LAD 223B
JDF MS M. PLAN 34C

- A Cracker Jack son who is a natural calf out of our donor cow 60N.
- A light birth weight EPD to go along with a great milk number.

www.delaneyherefords.com



•• Marty, Dayton, Jaci, Jerry, Shelly, Katie, Nick and Michael ••

Lot
48Y

JDH 4029 THOR 48Y

| | | | | |
|-----------------|-----------|----------|----------|---|
| REG # 43182821 | ACTUAL BW | ADJ. 205 | WW RATIO | SALE WEIGHTS & SCAN DATA AVAILABLE SALE DAY. |
| CALVED: 2/23/11 | 89 lbs. | 699 lbs. | 103 | |



| | |
|------|-------|
| BW | 3.1 |
| WW | 55 |
| YW | 88 |
| MILK | 26 |
| M&G | 54 |
| FAT | 0.004 |
| REA | 0.66 |
| MARB | 0.07 |
| CHB | \$28 |

JDH 15 WRANGLER 25L
THR THOR 4029 (P42551314)
 THR MISS THOR 0266
 KJ 2403 RECRUIT 966R
JDH MS 966R RECRUIT 52U (P42916549)
 JDH MS 15 WRANGLER 13M

JDF 16D WRANGLER 15
 JDH MS LUTE 18J
 CL 1 DOMINO 641F
 THR MISS THOR 8050
 ALLENDALE ROBIN HOOD
 MARK DOMETTE MR 2403
 JDF 16D WRANGLER 15
 FH MS GEN DOM 607

- A son of the popular THR Thor 4029 out of a daughter of Recruit.
- This bull has been an eye catcher since birth and he has a great set of numbers to go along with his style and balance. Milk in the top 10% of the breed, yearling weight in the top 15%, REA in the top 5% and CHB in the top 10%.
- Take a close look at this herd bull prospect!
- Member of our Reserve Grand Champion Carload.

Lot
50Y

JDH KYC 7W TAILOR 50Y

| | | | | |
|-----------------|-----------|----------|----------|---|
| REG # 43177826 | ACTUAL BW | ADJ. 205 | WW RATIO | SALE WEIGHTS & SCAN DATA AVAILABLE SALE DAY. |
| CALVED: 2/25/11 | 100 lbs. | 692 lbs. | 102 | |

HARVIE TRAVELER 69T
HARVIE TAILOR MADE ET 7W (P43164954)
 HARVIE MISS FIREFLY 51F
 KJ 2403 RECRUIT 966R
JDH MS RECRUIT 5U ET (P42916811)
 JDH MS P606 BOOMER 20R

KAIRURU ABERDEEN 03 0047
 HARVIE PEARL 129P
 HARVIE DEYNOTE 61D
 HARVIE MISS NYLON 1Y
 ALLENDALE ROBIN HOOD
 MARK DOMETTE MR 2403
 PW VICTOR BOOMER P606
 JDH MS ONLINE 13N

| BW | WW | YW | MILK | M&G | FAT | REA | MARB | CHB |
|-----|----|----|------|-----|--------|------|-------|------|
| 6.2 | 50 | 79 | 27 | 52 | -0.006 | 0.31 | -0.07 | \$19 |

- A big framed, dark colored Tailor Made son out of a Recruit daughter with an ideal udder. Not only that but she is out of our 20R cow.
- Milk EPD in the top 5% of the breed.
- This bull is owned with K & C Cattle.

Lot
60Y

JDH 26U CRACKER JACK 60Y

REG # 43173909

ACTUAL BW

ADJ. 205

WW RATIO

SALE WEIGHTS & SCAN DATA
AVAILABLE SALE DAY.

CALVED: 3/11/11

92 lbs.

742 lbs.

109



| | |
|------|-------|
| BW | 4.5 |
| WW | 57 |
| YW | 89 |
| MILK | 24 |
| M&G | 52 |
| FAT | 0.006 |
| REA | 0.47 |
| MARB | 0.06 |
| CHB | \$27 |

NJW 1Y WRANGLER 19D
AH JDH CRACKER JACK 26U ET (P42924297)
CRR D03 VIOLET 349

AH YANKEE 10S
JDH MS YANKEE 12U ET (P42916831)
JDF MS ISAACS 075 60N

CIRCLE-D WRANGLER 832W
NJW FROSTY 1Y
SHF INTERSTATE 20X D03
KJ 2410 VIOLET 392F
REMITALL ONLINE 122L
CRR D03 VIOLET 349
ISAACS 517 075
JDF MISS 223B 4E

- A son of Cracker Jack out of a daughter of AH Yankee 10S.
- The Yankee daughters are doing a great job and here is an example.
- He is double bred to the great Violet cow.
- High growth, great milk and CHB in the top 10% of the breed in this attractive package.
- Member of our Reserve Grand Champion Carload.

Lot
68Y

JDH AH 7W TAILOR 68Y ET

REG # 43177797

ACTUAL BW

ADJ. 205

WW RATIO

SALE WEIGHTS & SCAN DATA
AVAILABLE SALE DAY.

CALVED: 3/16/11

90 lbs.

717 lbs.

108



| | |
|------|-------|
| BW | 5.4 |
| WW | 59 |
| YW | 94 |
| MILK | 23 |
| M&G | 52 |
| FAT | 0.001 |
| REA | 0.54 |
| MARB | -0.02 |
| CHB | \$27 |

HARVIE TRAVELER 69T
HARVIE TAILOR MADE ET 7W (P43164954)
HARVIE MISS FIREFLY 51F

NJW 1Y WRANGLER 19D
AH JDH MS 19D VIOLET 6T ET (P42828759)
CRR D03 VIOLET 349

KAIRURU ABERDEEN 03 0047
HARVIE PEARL 129P
HARVIE DEYNOTE 61D
HARVIE MISS NYLON 1Y
CIRCLE-D WRANGLER 832W
NJW FROSTY 1Y
SHF INTERSTATE 20X D03
KJ 2410 VIOLET 392F

- A son of Harvie Tailor Made. His dam is a full sister to Cracker Jack and is quickly becoming one of our top donors.
- This dark bull has tremendous style and pigment and should produce high performing calves.
- Pigment, growth, milk and CHB in one good looking package!
- A member of our Reserve Grand Champion Carload.



•• Pete, Laura, Paul, Craig and Scott ••

Lot
70Y

JDH 117R RIBEYE 70Y ET

REG # 43177724 ACTUAL BW ADJ. 205 WW RATIO SALE WEIGHTS & SCAN DATA
 CALVED: 3/17/11 98 lbs. 687 lbs. 103 AVAILABLE SALE DAY.



| | |
|------|--------|
| BW | 4.5 |
| WW | 49 |
| YW | 77 |
| MILK | 27 |
| M&G | 52 |
| FAT | -0.015 |
| REA | 0.44 |
| MARB | 0.10 |
| CHB | \$25 |

KCF BENNETT 3008 M326
SHF RIB EYE M326 R117 (P42584003)
 HVH MISS HUDSON 83K 8M

PW VICTOR BOOMER P606
JDH MS P606 BOOMER 20R (P42576246)
 JDH MS ONLINE 13N

RRH MR FELT 3008
 KCF MISS 459 F284
 MSU MF HUDSON 19H
 SUN VINDY MISS 83K
 REMITALL BOOMER 46B
 PW VICTORIA 964 8114
 REMITALL ONLINE 122L
 JDH MS 4B EXCEED 23G

- A polled Rib Eye son out of the great P606 daughter, 20R. He has 4 other full brothers that sell.
- This guy is a truck! Extra stout and thick, he carries himself with style and balance in a moderate framed package to go along with great performance in a March 17th calf.
- A member of our Reserve Grand Champion Carload.

Lot
71Y

JDH 26U CRACKER JACK 71Y ET

REG # 43173644 ACTUAL BW ADJ. 205 WW RATIO SALE WEIGHTS & SCAN DATA
 CALVED: 3/18/11 86 lbs. 915 lbs. ET AVAILABLE SALE DAY.

NJW 1Y WRANGLER 19D
AH JDH CRACKER JACK 26U ET (P42924297)
 CRR D03 VIOLET 349

PW VICTOR BOOMER P606
JDH MS P606 BOOMER 20R (P42576246)
 JDH MS ONLINE 13N

CIRCLE-D WRANGLER 832W
 NJW FROSTY 1Y
 SHF INTERSTATE 20X D03
 KJ 2410 VIOLET 392F
 REMITALL BOOMER 46B
 PW VICTORIA 964 8114
 REMITALL ONLINE 122L
 JDH MS 4B EXCEED 23G

| | | | | | | | | |
|-----|----|----|------|-----|-------|------|------|------|
| BW | WW | YW | MILK | M&G | FAT | REA | MARB | CHB |
| 3.4 | 45 | 70 | 24 | 47 | 0.031 | 0.46 | 0.09 | \$20 |

- This Cracker Jack bull is a March 18th son of the 20R cow.
- This combination has worked very well and here is a chance to bring the influence of our two greatest donors, 20R and Violet into your herd.

Lot
72Y

JDH AH 158W 72Y ET

| | | | | |
|-----------------|-----------|----------|----------|--------------------------|
| REG # 43177728 | ACTUAL BW | ADJ. 205 | WW RATIO | SALE WEIGHTS & SCAN DATA |
| CALVED: 3/18/11 | 105 lbs. | 719 lbs. | 108 | AVAILABLE SALE DAY. |



| | |
|------|--------|
| BW | 6.8 |
| WW | 56 |
| YW | 90 |
| MILK | 17 |
| M&G | 45 |
| FAT | -0.007 |
| REA | 0.20 |
| MARB | 0.10 |
| CHB | \$25 |

STAR BRIGHT FUTURE 533P ET
STAR TCF SHOCK & AWE 158W ET (P42971547)
 MSU APOLLONIA 10M

REMITALL EMBRACER 8E
AH QUEEN BELLE 14R (P42625219)
 AH MS BANNER QUEEN 19H

REMITALL ONLINE 122L
 RB L1 DOMINETTE 8116
 SHF INTERSTATE 20X D03
 APOLLONIA OF BAR B 748
 REMITALL ACME 10A
 PLAIN LAKE BELLE 20X 117P 5B
 AH BANNER KING 13F
 FPH NEW EDITION D202

- A mid March son of 2 time Denver Supreme Champion Shock & Awe and out of a daughter of 8E who was a Junior National class winner and has been a great donor for us.
- Here is a bull with extra style and thickness and great performance.
- His full sister 23Y was a member of our pen of 3 heifers in Denver and was first choice of our pen in the Mile High sale selling for \$10,000 to White Willow Farm in Illinois.
- A member of our Reserve Grand Champion Carload.

Lot
78Y

AH BOULDER JACK 78Y

| | | | | |
|----------------|-----------|----------|----------|--------------------------|
| REG # 43180526 | ACTUAL BW | ADJ. 205 | WW RATIO | SALE WEIGHTS & SCAN DATA |
| CALVED: 3/6/11 | 62 lbs. | 585 lbs. | Twin | AVAILABLE SALE DAY. |

NJW 1Y WRANGLER 19D
AH JDH CRACKER JACK 26U ET (P42924297)
 CRR D03 VIOLET 349

JDH 100M BOULDER 11P
JDH MS 11P BOULDER 39S (P42706857)
 JDH MS ISSACS 075 16P

CIRCLE-D WRANGLER 832W
 NJW FROSTY 1Y
 SHF INTERSTATE 20X D03
 KJ 2410 VIOLET 392F
 NJW 57G 12E VALUE 100M
 JDH MS BEAU VICTOR 30K
 ISAACS 517 075
 FH MS GEN DOM 607

| | | | | | | | | |
|-----|----|----|------|-----|-------|------|------|------|
| BW | WW | YW | MILK | M&G | FAT | REA | MARB | CHB |
| 2.8 | 49 | 74 | 19 | 43 | 0.021 | 0.42 | 0.08 | \$23 |

- Here is a March bull calf who was raised as a twin on his mother. His twin sells as lot 79Y.
- His dam is in our donor herd and she weaned off 1180 lbs in these 2 calves! She is a top producer and these 2 bulls should be easy calving.



•• 2011 Fall Preview & MN Hereford Breeders Tour ••

Welcome to our Second Annual Spring Bull Sale!

What an exciting time to be in the cattle business! We are offering a set of bulls in this sale that we feel are right for the times. Bulls bred for performance, eye appeal, carcass traits and that will leave you with a great set of replacement females. There has never been a time in the beef industry when bringing in more pounds at weaning will bring more dollars to your bottom line than today. This is especially true if you are considering using Hereford bulls on your black cows. Take advantage of increased hybrid vigor, feed efficiency, longevity and more pounds at weaning by using top Hereford bulls on your black cows. Many of the bulls in this sale rank near the top of the breed in their EPD's for Growth, Rib Eye Area (REA), Certified Hereford Beef (CHB) and Milk.

We are also excited to be offering our Reserve Grand Champion Carload of bulls from the National Western Stock show as part of the sale offering. Only one bull was sold from that carload and the rest will be offered to you in this sale. Whether you are a long time Hereford breeder or a cattleman considering using a Hereford bull for the first time, there are bulls in this offering that will work for you.

We are excited to again offer a great set of Red Angus bulls from Jon Caraway, Caraway Red Angus Ranch. What a great addition to the offering. These are a powerful set of Red Angus bulls that will do an outstanding job for their new owners.

If you have questions or if we can be of assistance in any way please contact us. The bulls are available for viewing any time prior to the sale at Delaney Herefords. Videos of the offering are also available online by visiting www.delaneyherefords.com. We look forward to seeing you sale day and be sure to join us for lunch before the sale.

*Thanks,
Jerry Delaney & Pete Atkins*

Delaney **HEREFORDS**

Jerry & Shelly Delaney Family

2071 County Road 101 - Lake Benton, Minnesota 56149

Home - 507/368-9284 Jerry Cell - 507/820-0661 Marty Cell 507/820-0483
jerryandshelly@delaneyherefords.com

ATKINS **HEREFORDS**

Pete & Laura Atkins Family

27106 468th Ave - Tea, South Dakota 57064

Home - 605/368-2837 Pete - 605/351-9847 atkins15@sio.midco.net

ARAWAY **CR** **ED ANGUS** **RANCH**

Jon Caraway

1525 200th Street - Lake Benton, Minnesota 56149

Home - 507/368-9437 Cell - 507/530-3166 jon.c.caraway@us.army.mil



Reserve Grand Champion Hereford Carload at the 2012 National Western Stock Show

Lot
79Y

AH BOULDER JACK 79Y

REG # 43181980 ACTUAL BW ADJ. 205 WW RATIO SALE WEIGHTS & SCAN DATA
 CALVED: 3/6/11 70 lbs. 621 lbs. Twin AVAILABLE SALE DAY.

NJW 1Y WRANGLER 19D
AH JDH CRACKER JACK 26U ET (P42924297)
 CRR D03 VIOLET 349

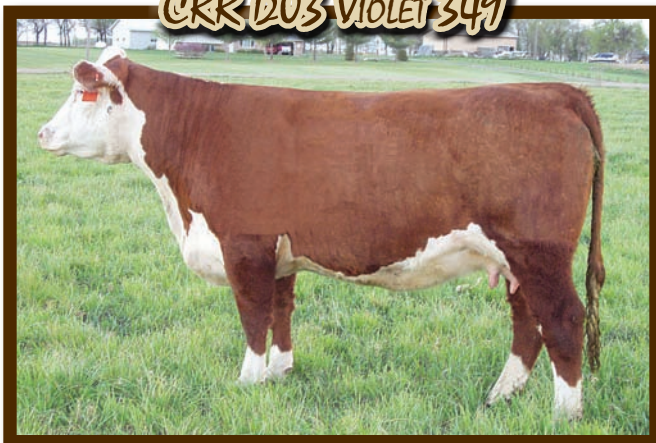
JDH 100M BOULDER 11P
JDH MS 11P BOULDER 39S (P42706857)
 JDH MS ISSACS 075 16P

CIRCLE-D WRANGLER 832W
 NJW FROSTY 1Y
 SHF INTERSTATE 20X D03
 KJ 2410 VIOLET 392F
 NJW 57G 12E VALUE 100M
 JDH MS BEAU VICTOR 30K
 ISAACS 517 075
 FH MS GEN DOM 607

| BW | WW | YW | MILK | M&G | FAT | REA | MARB | CHB |
|-----|----|----|------|-----|-------|------|------|------|
| 4.1 | 54 | 82 | 19 | 46 | 0.019 | 0.46 | 0.07 | \$25 |

- A twin to lot 78Y, this March bull calf is out of the 39S cow who is a Dam of Distinction and is in our donor herd.
- These twins were raised on their mother and are moderate framed with good thickness.

CRR D03 VIOLET 349



- Mother of herd bulls including Cracker Jack, AH Yankee and several others.
- She has also produced Denver lead cattle and high sellers and her daughters are making some of our top young cows.
- Her genetics have had a profound influence on our program and helped move us to the next level.
- Sons sell as lots 1Y, 3Y and 6Y.

Lot
84Y

AH WRANGLER JACK 84Y

REG # 43180531 ACTUAL BW ADJ. 205 WW RATIO SALE WEIGHTS & SCAN DATA
 CALVED: 3/27/11 82 lbs. 636 lbs. 97 AVAILABLE SALE DAY.

NJW 1Y WRANGLER 19D
AH JDH CRACKER JACK 26U ET (P42924297)
 CRR D03 VIOLET 349

JDH 15 WRANGLER 25L
AH JDH MS 14L WRANGLER 9W ET (P43021623)
 AH MS LADY QUEEN 14L

CIRCLE-D WRANGLER 832W
 NJW FROSTY 1Y
 SHF INTERSTATE 20X D03
 KJ 2410 VIOLET 392F
 JDF 16D WRANGLER 15
 JDH MS LUTE 18J
 AH POWER HITTER 10H
 AH MS BANNER QUEEN 19H

| BW | WW | YW | MILK | M&G | FAT | REA | MARB | CHB |
|-----|----|----|------|-----|-------|------|------|------|
| 3.3 | 49 | 81 | 19 | 43 | 0.013 | 0.31 | 0.16 | \$25 |

- A late March son of Cracker Jack out of a first calf daughter of 25L.
- A lighter birth weight bull, his dam is a full sister to 13T and 15T, herd bulls for us and Thorstenson Herefords.
- Good growth numbers with a Marbling EPD in the top 15% of the breed.

Lot
88Y

AH JACKS TRADITION 88Y

REG # 43180527 ACTUAL BW ADJ. 205 WW RATIO SALE WEIGHTS & SCAN DATA
 CALVED: 4/11/11 96 lbs. 663 lbs. 102 AVAILABLE SALE DAY.

NJW 1Y WRANGLER 19D
AH JDH CRACKER JACK 26U ET (P42924297)
 CRR D03 VIOLET 349

JDH ISAACS 075 57N
AH MS 57N TRADITION 33T (P42801829)
 AH MISS TRADITION 18K

CIRCLE-D WRANGLER 832W
 NJW FROSTY 1Y
 SHF INTERSTATE 20X D03
 KJ 2410 VIOLET 392F
 ISAACS 517 075
 JDH MS BEAU VICTOR 30K
 AH FAMILY TADITION 25H
 AH MS TRI BANNER 21H

| BW | WW | YW | MILK | M&G | FAT | REA | MARB | CHB |
|-----|----|----|------|-----|-------|------|------|------|
| 4.8 | 48 | 74 | 19 | 43 | 0.026 | 0.20 | 0.06 | \$21 |

- Don't overlook the youngest bull in the sale.
- An April 11th son of Cracker Jack who goes back to a strong cow family at Atkins.

JH

OUR NEWEST HERD SIRE



KJ HVH 33N REDEEM 48ST ET

REG # 42834201 •• CALVED: MARCH 15, 2007

| CE | BW | WW | YW | MILK | M&G | MCE | SC | FAT | REA | IMF | CHB |
|------|-----|----|-----|------|-----|-----|-----|-------|------|------|------|
| -0.2 | 3.0 | 74 | 110 | 21 | 58 | 2.8 | 1.2 | 0.043 | 0.79 | 0.21 | \$36 |

KCF BENNETT 3008 M326
SHF RADAR M326 R125 (P42584018)
 SHF POSTIVE MISS 73C M15

HVH KREMLIN 57F 108K
HVH OKSANA 4L 33N (P42353096)
 HVH GENETIC QUEEN 53H 4L

RRH MR FELT 3008
 KCF MISS 459 F284
 RF POSTIVE PLUS 73C
 SHF INTERSTATE D03 G28
 MSU MF HUDSON 19H
 HVH OKSANA 10Z 57F
 GK GENETIC EXPLOSION
 HVH MISS 512 35D 53H

- Owned by Delaney Herefords, Churchill Cattle Co., Hoffman Herefords and Jensen Bros.

TWO YEAR OLD BULLS

Lot
9X

AH DOMINO JACK 9X

| REG # 43093727 | ACTUAL BW | ADJ. 205 | WW RATIO | ADJ. 365 WEIGHT | RATIO |
|----------------|-----------|----------|----------|-----------------|-------|
| CALVED: 4/4/10 | 97 lbs. | 623 lbs. | 99 | 1076 lbs. | 101 |

NJW 1Y WRANGLER 19D
AH JDH CRACKER JACK 26U ET (P42924297)
 CRR D03 VIOLET 349

REMITALL KOOTENAY 9K
AH MS LADY DOMINO 21N (P42397525)
 AH MS DOMINO 19L

CIRCLE-D WRANGLER 832W
 NJW FROSTY 1Y
 SHF INTERSTATE 20X D03
 KJ 2410 VIOLET 392F
 REMITALL HOLLYWOOD 37H
 REMITALL GINGER 23G
 WALSH MCCANN 680 46G
 AH MS DOMINO 10J

| BW | WW | YW | MILK | M&G | FAT | REA | MARB | CHB |
|-----|----|----|------|-----|-------|------|------|------|
| 5.6 | 53 | 87 | 17 | 44 | 0.015 | 0.38 | 0.25 | \$28 |

- A dark red pigmented son of Cracker Jack that will cover a lot of cows.
- Excellent numbers for growth and CHB and a marbling EPD in the top 5% of the breed.

Lot
62X

JDH 13T WRANGLER 62X

| REG # 43080065 | ACTUAL BW | ADJ. 205 | WW RATIO | ADJ. 365 WEIGHT | RATIO |
|-----------------|-----------|----------|----------|-----------------|-------|
| CALVED: 2/26/10 | 92 lbs. | 727 lbs. | 104 | 1240 lbs. | 110 |

JDH 15 WRANGLER 25L
JDF AH 25L WRANGLER 13T ET (P42828888)
 AH MS LADY QUEEN 14L

PW VICTOR BOOMER P606
JDH MS P606 BOOMER 20R (P42576246)
 JDH MS ONLINE 13N

JDF 16D WRANGLER 15
 JDH MS LUTE 18J
 AH POWER HITTER 10H
 AH MS BANNER QUEEN 19H
 REMITALL BOOMER 46B
 PW VICTORIA 964 8114
 REMITALL ONLINE 122L
 JDH MS 4B EXCEED 23G

| BW | WW | YW | MILK | M&G | FAT | REA | MARB | CHB |
|-----|----|----|------|-----|--------|------|-------|------|
| 6.1 | 51 | 98 | 23 | 49 | -0.018 | 0.60 | -0.02 | \$25 |

- A son of Wrangler 13T out of 20R.
- Here is a bull who will sire calves with performance and muscle.

MORE EFFICIENT MEANS MORE HEREFORD.

HEREFORD — MAKING BLACK BETTER.

For efficiency and profitability, nothing gets you there faster than Hereford. Hereford characteristics, such as gain and feed conversion, show a \$78 advantage per head over Angus-sired calves from start to finish*. Ideal for your herd and for the future of your business, adding Hereford gives you the power to become more profitable.



American Hereford Association
 P.O. Box 014059, Kansas City, MO 64101
 (816) 842-3757 • www.hereford.org

*Preliminary findings from 2007 California State University study in cooperation with Lacey Livestock, Harris Feeding Co., and Harris Ranch Beef Co. "Impacts of Crossbreeding on Profitability in Vertically Coordinated Beef Industry Marketing Systems." Visit hereford.org and click on the "Heterosis Report" tab or contact Jack Ward, AHA chief operating officer at jward@hereford.org for more information.
 ©2007 American Hereford Association.



REFERENCE SIRES



AH JDH CRACKER JACK 26U ET

REG # 42924297 •• CALVED: FEBRUARY 7, 2008

| CE | BW | WW | YW | MILK | M&G | MCE | SC | FAT | REA | IMF | CHB |
|-----|-----|----|----|------|-----|-----|-----|-------|------|------|------|
| 4.6 | 2.6 | 47 | 73 | 19 | 43 | 2.4 | 0.7 | 0.048 | 0.33 | 0.20 | \$23 |

CIRCLE-D WRANGLER 832W
 NJW 1Y WRANGLER 19D (P23758169)
 NJW FROSTY 1Y

SHF INTERSTATE 20X D03
 CRR D03 VIOLET 349 (P42428481)
 KJ 2410 VIOLET 392F

BAR H L1CHANCE 55S
 CIRCLE D 193 SILHOUET 335S
 BT JR QUESTER 604M
 NJW P183 003 NICKETTE 1W
 REMITALL KEYNOTE 20X
 DR MISS D45 V100
 NJW Z17 VAQUERO 25C
 KJ SDS MIS VICI 2410

•• Owned by Delaney Herefords, Atkins Herefords and Hoffman Ranch.



SHF RIB EYE M326 R117

REG # 42584003 •• CALVED: MARCH 23, 2005

| CE | BW | WW | YW | MILK | M&G | MCE | SC | FAT | REA | IMF | CHB |
|-----|-----|----|----|------|-----|-----|-----|-------|------|------|------|
| 3.8 | 1.7 | 55 | 81 | 25 | 53 | 6.6 | 1.7 | -.035 | 0.32 | 0.27 | \$33 |

RRH MR FELT 3008
 KCF BENNETT 3008 M326 (P42361822)
 KCF MISS 459 F284

MSU MF HUDSON 19H
 HVH MISS HUDSON 83K 8M (P42247970)
 SUN VINDY MISS 83K

FELTONS 517
 RRH MS VICT 6191
 FELTONS 459
 KCF MISS X4 B156
 MSU WNH FELTON 5F
 MSU VICTORIA 9F
 YY 707B VENTURE ET 705G
 SUN 89U VINDY MISS 123H

REFERENCE SIRES



TH 122 711 VICTOR 719T

REG # 42800895 ** CALVED: JANUARY 24, 2007

| CE | BW | WW | YW | MILK | M&G | MCE | SC | FAT | REA | IMF | CHB |
|-----|-----|----|----|------|-----|------|-----|-------|------|------|------|
| 8.6 | 0.1 | 68 | 88 | 20 | 55 | -0.8 | 0.8 | -.015 | 0.73 | -.11 | \$32 |

HRP THM VICTOR 109W 9329
DRF JWR PRINCE VICTOR 711 (P41141619)
 RHF 964 VICTRA 4057

NJW 1Y WRANGLER 19D
KBCR 19D DOMINETTE 122 (P42220359)
 KBCR DOMINETTE 9112

BTF FORAGE FINDER 109W
 TMF VINDY 451
 RHF VICTOR 266 96
 PAF VICTORIA 2J85
 CIRCLE-D WRANGLER 832W
 NJW FROSTY 1Y
 KBCR 434V TRADER 535
 KBCR A58 DOMINETTE 523



HARVIE TAILOR MADE ET 7W

REG # 43164954 ** CALVED: JANUARY 28, 2009

| CE | BW | WW | YW | MILK | M&G | MCE | SC | FAT | REA | IMF | CHB |
|------|-----|----|----|------|-----|-----|-----|-------|------|------|------|
| -4.6 | 6.3 | 57 | 96 | 24 | 52 | 0.9 | 0.5 | -.009 | 0.42 | -.09 | \$23 |

KAIRURU ABERDEEN 03 0047
HARVIE TRAVELER 69T (P42972115)
 HARVIE PEARL 129P

HARVIE DEYNOTE 61D
HARVIE MISS FIREFLY 51F (P42362059)
 HARVIE MISS NYLON 1Y

LELANDS TRANSITION T7
 KAIRURU PLUM T44
 LEVELDALE KODIAK 23C ET 19K
 EASTON 26Y IRON LADY 43A
 REMITALL KEYNOTE 20X
 MS CRAIGIE TRUSTRMARK 10
 DURALTA 359S NYLON 16W
 CHSF 4R MISS CHOICE 11U

REFERENCE SIRES



STAR TCF SHOCK & AWE 158W ET

REG # 42971547 •• CALVED: FEBRUARY 5, 2009

| CE | BW | WW | YW | MILK | M&G | MCE | SC | FAT | REA | IMF | CHB |
|-----|-----|----|----|------|-----|-----|-----|-------|-----|------|------|
| -12 | 7.0 | 58 | 96 | 21 | 50 | 2.8 | 0.7 | -.005 | .29 | -.07 | \$21 |

THR THOR 4029

REG # 42551314 •• CALVED: MARCH 6, 2004

| CE | BW | WW | YW | MILK | M&G | MCE | SC | FAT | REA | IMF | CHB |
|-----|-----|----|-----|------|-----|-----|-----|-------|------|------|------|
| 0.8 | 2.5 | 57 | 102 | 23 | 51 | 3.5 | 1.9 | 0.004 | 0.91 | 0.14 | \$32 |

STAR BRIGHT FUTURE 533P ET

REG # 42483846 •• CALVED: JANUARY 29, 2004

| CE | BW | WW | YW | MILK | M&G | MCE | SC | FAT | REA | IMF | CHB |
|-------|-----|----|-----|------|-----|-----|-----|-------|------|------|------|
| -10.0 | 6.0 | 60 | 102 | 30 | 60 | 4.1 | 1.1 | 0.006 | 0.11 | 0.07 | \$25 |

JDF AH 25L WRANGLER 13T ET

REG # 42828888 •• CALVED: FEBRUARY 8, 2007

| CE | BW | WW | YW | MILK | M&G | MCE | SC | FAT | REA | IMF | CHB |
|------|-----|----|-----|------|-----|-----|-----|--------|------|------|------|
| -2.0 | 7.4 | 56 | 107 | 17 | 45 | 0.8 | 0.8 | -0.045 | 0.44 | 0.08 | \$31 |



•• 2011 Junior National ••

CRAR YEARLINGS

Lot
1103

CRAR NET WORTH 1103

| | | | | |
|-----------------|-----------|----------|----------|---|
| REG # 1427019 | ACTUAL BW | ADJ. 205 | WW RATIO | YEARLING WEIGHTS & SCAN DATA AVAILABLE SALE DAY. |
| CALVED: 2/12/11 | 94 lbs. | 752 lbs. | 100 | |



| | |
|------|-------|
| BW | 3.8 |
| WW | 47 |
| YW | 88 |
| MILK | 20 |
| TM | 43 |
| ME | 8 |
| MARB | 0.09 |
| REA | 0.19 |
| FAT | -0.02 |

PFFR SHAQ 607
BADLANDS NET WORTH 23U (1267422)
BADLANDS MEDORA 406

CRAR BABY JOHN 0603
CRAR MS BABY JOHN 801 (1233062)
3SCC JIBA 5105

S A V 8180 TRAVELER 004
RRM-NANCY-8965-9606
LCC CHEYENNE B221L
BADLANDS MEDORA 440
CFRA JR107 0323
TBS MS MONU 2187
BIEBER RED MOON 6042
LCC JIBA NA013

- Here is a dark red bull that goes back to Monu 4x and Bieber Redmoon on the dam side.
- He has tremendous width and is level across the top with great length and will add pounds to your calves.
- His dam has a MPPA of 102.
- Limited Net worth semen out there so don't miss your chance to get your hands on this bull.

Lot
1105

CRAR MR NET WORTH 1105

| | | | | |
|-----------------|-----------|----------|----------|---|
| REG # 1426571 | ACTUAL BW | ADJ. 205 | WW RATIO | YEARLING WEIGHTS & SCAN DATA AVAILABLE SALE DAY. |
| CALVED: 2/16/11 | 90 lbs. | 812 lbs. | 105 | |



| | |
|------|------|
| BW | 3.6 |
| WW | 48 |
| YW | 88 |
| MILK | 20 |
| TM | 44 |
| ME | 3 |
| MARB | 0.12 |
| REA | 0.16 |
| FAT | 0.00 |

PFFR SHAQ 607
BADLANDS NET WORTH 23U (1267422)
BADLANDS MEDORA 406

BADLANDS PFFR TREND 520
CRAR MS TREND 808 (1233065)
CFRA MS ELW ROCKER 9848

S A V 8180 TRAVELER 004
RRM-NANCY-8965-9606
LCC CHEYENNE B221L
BADLANDS MEDORA 440
BADLANDS PFFR TREND 3335
PFFR MS POLLY 234
LMB ELWAY 938-587
JHE ROCKER 652-260

- Make sure you don't miss your chance on him.
- Take a look at his EPD's and some of the bulls in his pedigree. Here is a bull that puts it all together and will prove his "Net Worth".
- This might be one of your last chances to buy a Badlands Net Worth 23U son, as Net Worth is deceased and there is a limited amount of semen remaining.
- Retaining 1/3 interest.

CARAWAY RED ANGUS RANCH

Lot
1109

CRAR MR RED RUBY 1109

REG # 1431063 ACTUAL BW ADJ. 205 WW RATIO YEARLING WEIGHTS & SCAN
CALVED: 2/18/11 110 lbs. 879 lbs. 112 DATA AVAILABLE SALE DAY.

LMAN KING ROB 8621
LCHMN RED SPREAD 1271F (545761)
BJR MATTIE 002-1102

CFRA JR107 0323
CFRA MS IMPRESSIVE 0605 (1089320)
TEAPOT 111

LEACHMAN ROBUST 7222
LEACHMAN ELEANOR
BJR EXCEL-A-TOR
BJR MATTIE 1706-496
BJR JR 107
CFRA MS DREAM DAZY 007
LCHMN IMP ROB 1002H
3R MS PATCHMAKER 14D

| BW | WW | YW | MILK | TM | ME | MARB | REA | FAT |
|-----|----|----|------|----|----|-------|------|-------|
| 3.4 | 46 | 90 | 18 | 40 | 12 | -0.19 | 0.00 | -0.03 |

- Here is bull that is built like a brick house. He weaned off at 879 lbs for a ratio of 112.
- His dam can do no wrong, she has a beautiful udder and never misses. She has a MPPA of 103.8 and goes back to the TEAPOT 111 cow that still impresses me for a 12 year old cow.
- He is a true growth-curve bender.

Lot
1111

CRAR RED SPREAD 1111

REG # 1431065 ACTUAL BW ADJ. 205 WW RATIO YEARLING WEIGHTS & SCAN
CALVED: 2/20/11 89 lbs. 792 lbs. 101 DATA AVAILABLE SALE DAY.



| | |
|------|-------|
| BW | 1.2 |
| WW | 38 |
| YW | 78 |
| MILK | 19 |
| TM | 38 |
| ME | 14 |
| MARB | -0.21 |
| REA | 0.17 |
| FAT | 0.00 |

LMAN KING ROB 8621
LCHMN RED SPREAD 1271F (545761)
BJR MATTIE 002-1102

4L ADVANTAGE R9N
OHRR R9N SWEET BRANDY 116R (1098109)
LMG BRANDY 47

LEACHMAN ROBUST 7222
LEACHMAN ELEANOR
BJR EXCEL-A-TOR
BJR MATTIE 1706-496
PERKS ADVANCER 9088
4L MS MAKE MY DAY R903
RCRA FEDERAL EXPRESS
LMG BRANDY 016

- Here is a bull that I would not be afraid to use on heifers.
- His sire is a proven sire that has maternal value along with good muscle and performance.
- His dam is a cow that we purchased from Olsen Red Angus and definitely has the milk which would be a plus in any herd.

Lot
1114

CRAR PURSUE 1114

| | | | | |
|----------------|-----------|----------|----------|---|
| REG # 1431070 | ACTUAL BW | ADJ. 205 | WW RATIO | YEARLING WEIGHTS & SCAN DATA AVAILABLE SALE DAY. |
| CALVED: 3/4/11 | 90 lbs. | 767 lbs. | 98 | |



| | |
|------|-------|
| BW | 2.0 |
| WW | 34 |
| YW | 66 |
| MILK | 14 |
| TM | 31 |
| ME | 1 |
| MARB | -0.21 |
| REA | 0.18 |
| FAT | -0.01 |

RED SSS PURSUE 99M
RED SSS PURSUE 808T (1351057)
RED SSS BLOCKANNA 666F

COLEY'S MOJITO 503R
PFFR MS ROCKETTE 8022 (1228847)
2RJL MISS ROCKETTE 505

SSS HOT PURSUIT 450K
RED SSS BLOCKANNA 886G
SSS BOOMER 803B
SSS STAR BLOCKANNA 621Z
PERKS ADVANCE 121R
NER COPPER QUEEN 2657
BASIN HOBO 0545
CFRA ROCKER 6105-9820

- *The Pursue sons have done well for me at the stock shows. Buyers know what pays the bill - pounds in the feed lot. Here is a bull that will put those pounds on your calves.*
- *He moves well and is very level across the top.*
- *Also goes back to CFRA Rocker 6105-9820 cow.*

Lot
1116

CRAR PURSUE 1116

| | | | | |
|----------------|-----------|----------|----------|---|
| REG # 1431064 | ACTUAL BW | ADJ. 205 | WW RATIO | YEARLING WEIGHTS & SCAN DATA AVAILABLE SALE DAY. |
| CALVED: 3/6/11 | 94 lbs. | 769 lbs. | 98 | |



| | |
|------|-------|
| BW | 3.1 |
| WW | 38 |
| YW | 73 |
| MILK | 9 |
| TM | 27 |
| ME | 3 |
| MARB | -0.12 |
| REA | 0.07 |
| FAT | -0.02 |

RED SSS PURSUE 99M
RED SSS PURSUE 808T (1351057)
RED SSS BLOCKANNA 666F

BHR CENTS 383B
SJBR LORELEI 641 (1095861)
GRAZE L34G BRIANNA

SSS HOT PURSUIT 450K
RED SSS BLOCKANNA 886G
SSS BOOMER 803B
SSS STAR BLOCKANNA 621Z
BHR DOLLAR 863B
MISS BHR THE DUKE 730
BADLANDS T-BONE 918
SBCC APOLLONIA JR-564

- *Here is a powerfully made bull that looks just like his brothers that we sold at the Sioux Falls and Watertown farm shows.*
- *He is thick butted, soggy made and heavy boned dark cherry red bull.*
- *His sire goes back to GDAR Traveler 044. He will add pounds to your calves.*

Lot
1119

CRAR PURSUE 1119

REG # 1431075 ACTUAL BW ADJ. 205 WW RATIO YEARLING WEIGHTS & SCAN
CALVED: 3/10/11 80 lbs. 752 lbs. 96 DATA AVAILABLE SALE DAY.

RED SSS PURSUE 99M
RED SSS PURSUE 808T (1351057)
RED SSS BLOCKANNA 666F

CTDB MAKE MY DAY 808
TBS MS BRENNERS DAY 02 (716767)
TBS MS BRENNER 8561-44

SSS HOT PURSUIT 450K
RED SSS BLOCKANNA 886G
SSS BOOMER 803B
SSS STAR BLOCKANNA 621Z
BJR MAKE MY DAY 981
BJR MATTIE-677-6153
TBS MR BRENNER 44
TBS ROSIE RED 561

| BW | WW | YW | MILK | TM | ME | MARB | REA | FAT |
|-----|----|----|------|----|----|-------|------|-------|
| 0.2 | 25 | 50 | 17 | 30 | 2 | -0.07 | 0.02 | -0.02 |

- If you are looking for a Pursue son that you can use on heifers, here he is.
- His dam was a bigger framed great milking cow that has a MPPA of 103.7.
- If you want to add size to your cow herd, plus replacement heifers that will milk here is the bull that can do that.

Lot
1123

CRAR PURSUE 1123

REG # 1431074 ACTUAL BW ADJ. 205 WW RATIO YEARLING WEIGHTS & SCAN
CALVED: 3/25/11 90 lbs. 815 lbs. 103 DATA AVAILABLE SALE DAY.

RED SSS PURSUE 99M
RED SSS PURSUE 808T (1351057)
RED SSS BLOCKANNA 666F

BJF TOP GUN 403P
BJF TOP CANYON 9006W (1312109)
BJF 324N

SSS HOT PURSUIT 450K
RED SSS BLOCKANNA 886G
SSS BOOMER 803B
SSS STAR BLOCKANNA 621Z
BFCK CHEROKEE CNYN 4912
CBR MISS KITTY 316-122
LCHMN GRANDCANYON 1244G
BJF 072K

| BW | WW | YW | MILK | TM | ME | MARB | REA | FAT |
|-----|----|----|------|----|----|-------|------|-------|
| 2.1 | 38 | 67 | 12 | 31 | 1 | -0.14 | 0.13 | -0.02 |

- Here is the youngest of my bulls, but don't think just because he is the youngest that he is not a good one. I am speaking from experience.
- This bull is a nice soggy made bull that had a weaning weight of 815 lbs and a ratio of 103. He is out of a first calf heifer, which has a MPPA of 101.2.

CRAR FALL BULLS

Lot
1022

CRAR PURSUE DAY 1022

REG # 1411221 ACTUAL BW ADJ. 205 WW RATIO YW WDA
CALVED: 8/08/10 73 lbs. 835 lbs. 102 1343 lbs. 3.57

RED SSS PURSUE 99M
RED SSS PURSUE 808T (1351057)
RED SSS BLOCKANNA 666F

BADLANDS PFFR HOLIDAY 547
CRAR MS CEDAR 0711 (1213646)
TBS MS DAY 2211

SSS HOT PURSUIT 450K
RED SSS BLOCKANNA 886G
SSS BOOMER 803B
SSS STAR BLOCKANNA 621Z
WEBR DOC HOLLIDAY 2N
BADLANDS PFFR CEDAR 3363
BJR MAKE MY DAY 981
TBS MS BONUS MAKER 028

| BW | WW | YW | MILK | TM | ME | MARB | REA | FAT |
|-----|----|----|------|----|----|------|-------|------|
| 0.2 | 29 | 59 | 17 | 31 | 2 | 0.11 | -0.06 | 0.03 |

- Here is a very thick dark cherry red bull that you could turn out with heifers or cows.
- If you are looking for a bull that will produce replacement heifers, here he is.
- His mother has a very level udder with small teats. Plus a bull that will also add pounds to your calf crop.

Lot
1027

CRAR SQUALL T3 1027

| REG # 1411233 | ACTUAL BW | ADJ. 205 | WW RATIO | YW | WDA |
|-----------------|-----------|----------|----------|-----------|------|
| CALVED: 8/21/10 | 68 lbs. | 870 lbs. | 100 | 1135 lbs. | 3.49 |



| | |
|------|-------|
| BW | -0.8 |
| WW | 39 |
| YW | 74 |
| MILK | 12 |
| TM | 31 |
| ME | 2 |
| MARB | -0.07 |
| REA | -0.10 |
| FAT | 0.03 |

RED BRYLOR PASQUOLE 213P
RED BRYLOR SQUALL 230S (1207935)
 RED CYT FANNY 15P

CFRA T3 CHIEF 0509
CRAR MS T3 CHIEF 817 (1284531)
 CFRA MS HIGH COUNTRY 0516

VGW RAMBLER 1000
 RED XXX LAKME 70M
 RED BRYLOR STALLION 46M
 RED PRIME TIME'S FANNY 5'00
 CFRA T3 CHIEF 0113
 MJ MS CANYON T40-49L
 GLACIER HI COUNTRY 926
 CFRA MS DREAM DAZY 007

- Heifer bull alert! Out of a first calf heifer and dark cherry red in color, he is good on his feet and legs.
- His sire comes out of Canada from Brylor Ranch and he is MAF and OSF.
- He comes from a great cow family, where his Grandma was a champion in the show ring with a great udder.

Lot
1032

CRAR TAYLOR ROCKER 1032

| REG # 1411202 | ACTUAL BW | ADJ. 205 | WW RATIO | YW | WDA |
|-----------------|-----------|----------|----------|-----------|------|
| CALVED: 8/23/10 | 78 lbs. | 817 lbs. | 100 | 1255 lbs. | 3.43 |



| | |
|------|-------|
| BW | 2.5 |
| WW | 35 |
| YW | 64 |
| MILK | 19 |
| TM | 36 |
| ME | 12 |
| MARB | -0.24 |
| REA | 0.25 |
| FAT | -0.02 |

RED SSS PURSUE 99M
RED SSS PURSUE 808T (1351057)
 RED SSS BLOCKANNA 666F

GLACIER CHATEAU 744
2RJL ROCKER CHT R565 (1035906)
 CFRA ROCKER 6105-9820

SSS HOT PURSUIT 450K
 RED SSS BLOCKANNA 886G
 SSS BOOMER 803B
 SSS STAR BLOCKANNA 621Z
 LMAN KING ROB 8621
 GLACIER REBALA
 PFFR EXPEDITION 648
 JHE ROCKER 794-494

- Looking to add some size to your cow herd? Here is a bull with great length and a dam that was a tremendous milker who had a MPPA of 103. She goes back to the great Rocker 6105 cow.
- His half brother was Champion Bull at 2010 SD State Fair and our top selling bull last year.

RED ANGUS

SPRING 2012 BREED AVERAGE EPD'S

| BW | WW | YW | MILK | TM | ME | MARB | REA | FAT |
|------|----|----|------|----|----|------|------|------|
| -0.5 | 33 | 62 | 17 | 33 | 3 | 0.08 | 0.07 | 0.00 |

Lot
1038

CRAR SQUALL 1038

| REG # 1411230 | ACTUAL BW | ADJ. 205 | WW RATIO | YW | WDA |
|------------------------|-----------|----------|----------|-----------|------|
| CALVED: 8/29/10 | 70 lbs. | 872 lbs. | 100 | 1398 lbs. | 3.63 |

RED BRYLOR PASQUOLE 213P
RED BRYLOR SQUALL 230S (1207935)
 RED CYT FANNY 15P

CFRA T3 CHIEF 0509
CRAR MS T3 CHIEF 840 (1284511)
 MJ MS CANYON 474-40L

VGW RAMBLER 1000
 RED XXX LAKME 70M
 RED BRYLOR STALLION 46M
 RED PRIME TIME'S FANNY 5'00
 CFRA T3 CHIEF 0113
 MJ MS CANYON T40-49L
 PFFR CANYON 710
 MJ MISS KEE 474

| BW | WW | YW | MILK | TM | ME | MARB | REA | FAT |
|------|----|----|------|----|----|-------|------|-------|
| -0.6 | 38 | 73 | 13 | 32 | 0 | -0.16 | 0.02 | -0.04 |

- Another Squall son that is also MAF and OSF. Herd Bull is written all over him.
- He is out of a first calf heifer that did an outstanding job. Starting with a 70 lbs BW and finishing with a YW of 1398 lbs. He puts it all together low birth weight and good weaning and yearly numbers, plus an excellent disposition. Take a close look at him on sale day.
- Retaining ½ interest.

Lot
1044

CRAR TAYLOR JR 1044

| REG # 1411218 | ACTUAL BW | ADJ. 205 | WW RATIO | YW | WDA |
|-----------------------|-----------|----------|----------|-----------|------|
| CALVED: 9/4/10 | 79 lbs. | 795 lbs. | 105 | 1212 lbs. | 3.26 |

STRAKA'S GENESIS 9050
STRAKA'S TAYLOR MADE 6052 (1155414)
 DMS 5014 MS TEN D 9124

CFRA JR107 0323
CRAR MS JR107 0628 (1144405)
 TBS MS LOGAN 2164

RED TASSEL CHIVALRY 1G
 DMS MISS IMPACT 2131
 STRAKA'S KEYSTONE 5014
 TENN MISS DANELLE
 BJR JR 107
 JDRA LOGGIE 033
 BJR MAKE MY DAY 981
 TBS TOP HIT DYNAMO 387

| BW | WW | YW | MILK | TM | ME | MARB | REA | FAT |
|-----|----|----|------|----|----|------|-------|------|
| 0.8 | 23 | 42 | 16 | 28 | -1 | 0.01 | 00.15 | 0.00 |

- The only Straka's Taylor Made bull in the sale. We bought his sire from Dan Straka of Nebraska a few years ago.
- Calves are very long when they are born and they grow into themselves.
- He is just like his father, long and deep with good feet.
- He had an actual REA of 15.6 with a Ratio of 114.
- His dam has one of the best calves every year.



•• 2011 Bull Sale ••

CRAR REFERENCE SIREs

RED SSS PURSUE 808T

REG # 1351057 •• CALVED: MARCH 14, 2007

| CE | BW | WW | YW | MILK | ME | HPG | CEM | STAY | MARB | REA | FAT |
|----|-----|----|----|------|----|-----|-----|------|-------|------|-------|
| 1 | 1.8 | 29 | 55 | 11 | 0 | 7 | 0 | 9 | -0.23 | 0.14 | -0.03 |

SSS HOT PURSUIT 450K
RED SSS PURSUE 99M (CAN:1129067)
 RED SSS BLOCKANNA 886G

SSS BOOMER 803B
RED SSS BLOCKANNA 666F (CAN:851227)
 SSS STAR BLOCKANNA 621Z

G D A R TRAVELER 044
 BLUE SPR SAMARIA 142B
 RED SSS ZAMA PINE 37S
 SSS BLOCKANNA 842B
 FCC RAMBO 502
 SSS MS HIGH LASS 352X
 RED MVHF SUPER STAR 24X
 SSS MS BLOCKANNA 76T

BADLANDS NET WORTH 23U

REG # 1267422 •• CALVED: FEBRUARY 12, 2008

| CE | BW | WW | YW | MILK | ME | HPG | CEM | STAY | MARB | REA | FAT |
|----|-----|----|-----|------|----|-----|-----|------|------|------|-------|
| -4 | 7.1 | 64 | 115 | 16 | 2 | 11 | 3 | 13 | 0.23 | 0.42 | -0.02 |

S A V 8180 TRAVELER 004
PFFR SHAQ 607 (1122280)
 RRM-NANCY 8965-9605

LCC CHEYENNE B221L
BADLANDS MEDORA 406 (994177)
 BADLANDS MEDORA 440

SITZ TRAVELER 8180
 BOYD FOREVER LADY 8003
 JHE JOHN 022
 RRM CAYALO 8531-8965
 BFCK CHEROKEE CNYN 4912
 HXC 701G
 BJR THE DUKE 502-5176
 GSP ULTRA LADY 802

LCHMN RED SPREAD 1271F

REG # 545761 •• CALVED: MARCH 15, 1996

| CE | BW | WW | YW | MILK | ME | HPG | CEM | STAY | MARB | REA | FAT |
|----|-----|----|-----|------|----|-----|-----|------|-------|------|------|
| 1 | 1.7 | 54 | 109 | 18 | 19 | 13 | 1 | 9 | -0.26 | 0.14 | 0.01 |

LEACHMAN ROBUST 7222
LMAN KING ROB 8621 (335067)
 LEACHMAN ELEANOR

BJR EXCEL-A-TOR
BJR MATTIE 002-1102 (151351)
 BADLANDS MEDORA 440

RCN DYNAMO 614
 LEACHMAN DUCHESS6463
 JTL 9004 KING KONG
 PRF ELEANOR L015
 SAYRE PATRIOT
 ANKY B999 LASS 54374 (LCHMN THNDRBLTX1706)
 TDMD MATTIE 204-240

RED BRYLOR SQUALL 230S

REG # 1207935 •• CALVED: MAY 2, 2006

| CE | BW | WW | YW | MILK | ME | HPG | CEM | STAY | MARB | REA | FAT |
|----|------|----|----|------|----|-----|-----|------|------|-------|------|
| 17 | -4.1 | 35 | 61 | 10 | -1 | 11 | 12 | 9 | -.30 | -0.03 | 0.01 |

VGW RAMBLER 1000
RED BRYLOR PASQUOLE 213P (1207934)
 RED XXX LAKME 70M

RED BRYLOR STALLION 46M
RED CYT FANNY 15P (CAN:1227874)
 RED PRIME TIME'S FANNY 5'00

BJR RAMBLER 5162
 VGW UMPIRE YUMA 9266
 RED BRYLOR NEW TREND 22
 RED FINE LINE LAKME 21J
 RED BRYLOR STALLION 19J
 RED BRYLOR BONITA 82F
 RED SIX MILE TITANIC 195H
 RED SIX MILE FANNY 146H



Thank You for Your Interest!

•• MONDAY, APRIL 2, 2012 AT 1:00PM ••

Lunch beginning at 11:30AM

•• SALE DAY CONTACTS ••

| | |
|---------------------|--------------|
| Sale Day Phone..... | 507/368-9284 |
| Jerry Cell..... | 507/820-0661 |
| Pete Cell..... | 605/351-9847 |
| Marty Cell..... | 507/820-0483 |
| Michael Cell..... | 507/820-0493 |
| Jon Cell..... | 507/530-3166 |

Conference Call Bidding - If you would like to place a bid but are unable to attend the sale, feel free to contact any of the owners or sale staff. Real time bidding will be available via conference call during the sale by calling **605-693-2663** and when prompted for a conference call pass code, enter **30084**. Please call prior to the sale to register for a buyer number. You may stay on the line as long as you wish.

•• SALE STAFF ••

| | |
|--|--------------|
| Jim Birdwell, Auctioneer..... | 580-695-2352 |
| Art Handel, Handel Marketing..... | 605/391-8233 |
| Levi Landers, American Hereford Association..... | 308/730-1396 |
| Marc & Jill Hotchkiss, Hereford America..... | 605/490-1409 |
| JT Weber, Special Assignment..... | 507/368-9560 |
| Steve Wolf, Special Assignment..... | 701/710-1574 |
| Scott McGee, M&M Livestock Service..... | 402-300-2659 |

•• DIRECTIONS ••

**Delaney Herefords Sale Barn is located at
2071 County Road 101 - Lake Benton, Minnesota 56149**

From Lake Benton, Minnesota -

Take Hwy 75 north 4 miles, turn west onto County Hwy 13 for 5 miles. Turn north on County Road 101 for 1.5 miles. Delaney Herefords Sale Barn is on the west side of the road.

From Brookings, South Dakota -

Take Hwy 14 east toward Lake Benton 20 miles. Turn north on County Hwy 1 for 4 miles. Turn east onto County Hwy 13 for 2 miles. Turn north onto County Road 101 for 1.5 miles. Delaney Herefords Sale Barn is on the west side of the road.

•• ACKNOWLEDGEMENTS ••

| | |
|----------------------|--------------------------------------|
| Videos..... | Livestock Videos by Hereford America |
| Catalog..... | Katie Delaney |
| Hereford Photos..... | Pete Atkins |

**JDelaney
HEREFORDS**

**ATKINS
HEREFORDS**

www.delaneyherefords.com

PRST STD
POSTAGE PAID
MARSHALL, MN
PERMIT NO. 120

RETURN
SERVICE
REQUESTED

Delaney
HEREFORDS

2071 County Road 101
Lake Benton, MN 56149

Find Our Videos Fast!

*Using your smart phone, scan
this QR code for video of each
sale bull at your fingertips!*



Like us on
Facebook

www.delaneyherefords.com