

Look Inside
for a DVD of
the Bulls



Pyramid *Beef*

"Profit through Predictability"

2nd Annual Bull Sale

Selling 75 coming
two year old bulls

DEC. 3, 2011

St. Onge Livestock - St. Onge, SD - 1p.m.

For more information, contact:

Nate Frederickson	605-642-1131
Jason McLennan	605-645-1630
Jonathan Marohl	701-445-3456
Mark Frederickson	320-808-6691

19558 Anchor RD
St. Onge, SD 57779
www.Pyramidbeef.com

Welcome to the sale



The Frederickson Family
(L to R: Tiernan, Nate, Jayna and
Teegan Frederickson)



Jason & Karen McLennan
Family (Clockwise from top
right: Jason, Ava, Joseph and
Karen)



Jonathan & Michelle Marohl
Family (L to R) Clayton, Cody,
Michelle, Lilian, Jonathan,
Cecilia

We would like to welcome you to the 2nd annual sale of Pyramid Beef, LLP. We would like to send a heart felt thanks to all who participated in our inaugural sale event a year ago. Your willingness to incorporate our genetics and philosophy is very much appreciated and we hope to gain your confidence, trust and satisfaction with each offering.

For the exception of the widespread drought in the south it has been an unprecedented year in the beef industry. Record prices, abundant moisture and strong demand have aided most of us in making headway with our operations. Regardless of the current status of the industry our focus remains the same. That is to produce the highest quality genetics possible to meet your very needs. We will remain diligent in selecting genetics that excel in fertility, maternal, performance from birth to rail, and disposition. We will not propagate genetics that do not also adhere to strict guidelines for soundness, udder quality, maternal instinct and natural fleshing ability. It is not an easy undertaking but we are

up to the challenge of meeting all of these criteria.

We are very pleased with this set of bulls being offered December 3rd. They are a sound, quiet set of bulls that are bred and developed to assist you in your needs next breeding season. The bulls were weaned late last October and developed on a 44 Mcal roughage based ration until yearling data was collected in late April. The bulls were summered on native grass until mid

Our mission is to produce low maintenance, problem-free superior seedstock that create more profit, sustainability and marketing opportunity for our customers.

August. At that time we brought the bulls in and have placed them on a high roughage ration that they will remain on until sale time.

All of the bulls have been a part of a complete health program from birth until now and are ready to go to their new owners.

We thank you for your interest and invite you to give any one of us a call to assist you or set up a time to view the bulls.


Sincerely,

Pyramid Beef



Contact Us

Nate Frederickson H: 605-642-1131
C: 605-254-4872
Jason McLennan C: 605-645-1630
Jonathan Marohl H: 701-445-3456
C: 701-202-6905
Mark Frederickson C: 320-808-6691



Cattle Viewing

Dec. 2-3, 2011, the bulls will be available for viewing at Brunner Feedlot, Vale, S.D.



Sale Terms & Conditions

All cattle sell under the standard terms and conditions of the American Angus Association and the American Hereford Association. Terms of the sale are cash. **Bulls are cataloged in sale order.**




Herd Health

Bulls have had a complete herd health program as calves. Prior to sale day they have had another round of Vira Shield 6, Fusoguard (Foot-rot), Dectomax Injectable and Pour On for lice control. All bulls have been semen-tested.



Lunch, Social & Supper

Please join us for a complimentary lunch before the sale at St. Onge Livestock and stay for the social and supper following the sale!



Genetic Defects

All cattle selling are guaranteed free of any known genetic defects.



Auctioneer

Mark McNamee H: 307-760-9510



Sale Day Contacts

Mark Hotchkiss 605-490-1513
Hereford America

Vern Frey 701-721-0344
American Angus Association

Tim Olson 605-641-5966
CATL Resources

Chandy Olson, DVM 605-641-2325
Sale Day Vet

Justin Tupper 605-680-0259
St. Onge Livestock

Clint Ridley 605-645-9777
Order Buyer

St. Onge Livestock 605-642-2200



Directions

St. Onge Livestock is located just east off of Hwy. 34 in St. Onge, SD.



Sale Delivery, 2011

Pyramid Beef is offering free delivery on all bulls sold within 300 miles. Receive a \$50 discount per bull if you haul your own sale day.



Accommodations

Sale Headquarters - A Block of Rooms has been reserved at the AmericInn Lodge & Suites.

Call for information:

AmericInn Lodge & Suites Belle Fourche, SD
(605) 892-0900

Best Western Sturgis, SD
(605) 347-3604

Comfort Suites Spearfish, SD
(605) 642-3003

Holiday Inn Spearfish, SD
(605) 642-4683



Bull Guarantee

All bulls selling for \$2,500 or more will be covered 50% by Pyramid Beef if they are injured during their first breeding season. Breeding season is defined as the 90-day period following the first turnout of the bulls.

50% of the value of the injured bull, minus one-half salvage value, will be given as credit in a future sale or toward a replacement bull if one is available. Salvage value, if any, will be split equally between Pyramid Beef and the buyer. All injured bulls must be diagnosed by a veterinarian. Please notify us as soon as possible should injury occur and prior to the injured bull being sold for salvage. All claims must be made by Sept. 1, 2012.

Example: A \$5,000 bull is injured and will not heal. A credit of \$2,500 minus one-half any salvage value will be given to the buyer.

Angus Reference Sires



GAR Game On



GAR Game On

Reg. 15482196 Tattoo: S115 Calved: 8/15/05

G A R Precision 1680 #
G A R Retail Product #
G A R Ext 4927

Bon View New Design 1407 #
G A R 1407 New Design 1683
G A R 616 Rito 3561

Tehama Bando 155 #
9J9 G A R 856
N Bar Emulation EXT #
G A R Traveler 641
B/R New Design 036 #
Bon View Pride 664
Rito 616 of 4B20 6807 #
G A R Ext 2008

CED	BW	WW	Milk	YW	\$W	\$F	\$G	\$B	Act. sc
+8	+1.2	+60	+23	+115	34.16	51.14	36.67	69.26	

BW	205R	YR

Marb.	REA	Fat
.63	.51	-.005



Connealy Thunder



Connealy Thunder

Reg. 15148659 Tattoo: 587 Calved: 1/28/05

Jauer 353 Traveler 589 27#
Baldridge Kaboom K243 KCF
Pleasanta of Conanga 736

Bon View Bando 598#
Parka of Conanga 241#
Partina of Conanga 6237

Jauer 7111 Traveler 353 719
Jauer 6807 Traveler 27 085
GT Maximum#
Pleasant Pill of Conanga#
Tehama Bando 155#
Bon View Dora 56#
Schoenes Fix It 826#
Party Date of Conanga

CED	BW	WW	Milk	YW	\$W	\$F	\$G	\$B	Act. sc
+7	-.4	+43	+14	+91	22.73	32.88	17.41	44.34	

BW	205R	YR

Marb.	REA	Fat
0.29	0.42	-0.005



S A V Pyramid 8186



S A V Pyramid 8186

Reg. 16107705 Tattoo: 8186 Calved: 3/01/08

S A V 8180 Traveler 004 #
S A V Net Worth 4200
S A V May 2410

Boyd New Day 8005 #
S A V Blackbird 5296
S A V Blackbird 1082

Sitz Traveler 8180 #
Boyd Forever Lady 8003
S A F 598 Bando 5175 #
S A V May 6269 #
A A R New Trend #
S V F Forever Lady 57D
S A F 598 Bando 5175 #
S A V Blackbird 4036 #

CED	BW	WW	Milk	YW	\$W	\$F	\$G	\$B	Act. sc
+5	+3.6	+51	+29	+98	22.73	32.88	17.41	44.34	

BW	205R	YR

Marb.	REA	Fat
0.41	0.59	+ .021



SAV 004 Predominant 4438



SAV 004 Predominant 4438

Reg. 14823655 Tattoo: 438 Calved: 1/30/04

Sitz Traveler 8180 #
S A V 8180 Traveler 004 #
Boyd Forever Lady 8003

S A F 598 Bando 5175 #
S A V Emblynette 1182
S A V Emblynette 7319

G D A R Traveler 71 #
Sitz Everelda Entense 1137
A A R New Trend #
S V F Forever Lady 57D
Bon View Bando 598 #
S A F Royal Lass 1002
S A V Ext Emulation 5040
S A V Emblynette Diamond 5369

CED	BW	WW	Milk	YW	\$W	\$F	\$G	\$B	Act. sc
+9	+2.3	+59	+24	+99	32.68	34.70	13.13	50.07	

BW	205R	YR

Marb.	REA	Fat
0.41	.14	.045



Sitz Alliance 8646



Sitz Alliance 8646

Reg. 15309986 Tattoo: 8646 Calved: 2/11/06

Sitz Traveler 8180#
Sitz Alliance 6595#
Sitz Barbaramere Jet 2698#

GDAR Traveler 044#
Sitz Barbaramere Nell 2309#
Sitz Barbaramere Nell 887

GDAR Traveler 71#
Sitz Everelda Entense 1137
3 Bar Spike 1766
Sitz Baramere Jet 155#
DHD Traveler 6807#
GDAR Blackcap Lady 840#
Bon View Emulation EXT 473#
Sitz barbaramere Nell 348

CED	BW	WW	Milk	YW
+10	-2	+30	+25	+52

\$W	\$F	\$G	\$B	Act. sc
27.21	+1.12	17.95	28.63	

BW	205R	YR

Marb.	REA	Fat
+ .26	-.02	+.022



SAV Bandos Pride 5265



S A V Bandos Pride 5265

Reg. 15108274 Tattoo: 5265 Calved: 2/26/05

Bon View Bando 598 #
S A F 598 Bando 5175 AAA #
S A F Royal Lass 1002

S A V Final Answer 0035 #
S A V Madame Pride 2330
S A V Madame Pride 0075

Tehama Bando 155 #
Bon View Dora 56 #
V D A R New Trend 315 #
S A F Royal Lass 6089
Sitz Traveler 8180 #
S A V Emulous 8145
S A F 598 Bando 5175 #
S A V Madame Pride 8264

CED	BW	WW	Milk	YW
+9	+2.3	+59	+24	+99

\$W	\$F	\$G	\$B	Act. sc
32.68	34.70	13.13	50.07	

BW	205R	YR

Marb.	REA	Fat
0.41	.14	.045

You're On Your Way To Receiving Premiums.

The Transferred Registration Paper

Is the beginning ...

Proper Management and Records

Are the Key ...

Enrollment in AngusSource

Is the Payoff.



Source-, Age- and Genetic-verification.

AngusSource now offers a second-tier verification option called Gateway. Gateway verifies source and age. Contact AngusSource for more information.



We want to help market your calves. Contact us today to find out more.

816-583-8100

angussource@angus.org
www.angussource.com



Lot 1 - Pyramid Game On 0114



Pyramid Game On 0114

Reg. 16860822 Tattoo: 0114 Calved: 3/6/2010

GAR Retail Product # GAR Precision 1680 #
 GAR Game On GAR Ext 4927
 GAR 1407 New Design 1683 Bon View New Design 1407 #
 GAR 616 Rito 3561
 Sitz Alliance 6595 #
 KCF Bennett Total # Ext of Conanga 6790
 Glacial Lovely 16T Glacial Quantum 3330 15K
 Glacial Lovely 53M KNM Lovely 044#

CED	BW	WW	Milk	YW	\$W	\$F	\$G	\$B	Act. sc
5	2.1	52	22	98	28.34	36.45	25.56	53.95	40.2

BW	205R	YR	Marb.	REA	Fat
85	106	114	0.39	0.23	0.003

- 110 IMF 104 REA ratios
- Performance standout.



Lot 4 - Pyramid 8186 0221



Pyramid 8186 0221

Reg. 16676559 Tattoo: 0221 Calved: 4/23/2010

SAV Net Worth 4200 SAV 8180 Traveler 004 #
 SAV Pyramid 8186 SAV May 2410
 SAV Blackbird 5296 Boyd New Day 8005 #
 SAV Blackbird 1082
 Leachman Right Time#
 21AR Right Time B68 Blackbird Lady 309 of LH
 21AR Queen View 6445 Papa Equator 2928 #
 21AR Queen View A39 Queen View 211 of LH#

CED	BW	WW	Milk	YW	\$W	\$F	\$G	\$B	Act. sc
2	3.2	49	25	93	23.51	32.55	18.19	52.46	37

BW	205R	YR	Marb.	REA	Fat
89	116	113	0.23	0.32	0.003

- Top weaning and yearling bull of his contemporary
- Powerful design
- Dam has a WR of 2@111



Pyramid Game On 0119

Reg. 16760126 Tattoo: 0119 Calved: 3/10/2010

GAR Retail Product # GAR Precision 1680 #
 GAR Game On GAR Ext 4927
 GAR 1407 New Design 1683 Bon View New Design 1407 #
 GAR 616 Rito 3561
 Vermillion Dateline 7078 #
 Glacial 7078 VRD 20N KNM Enchantress 005
 Glacial 20N Miss Wix 74S Glacial Quantum 3330 15K
 Glacial Miss Wix 30M # Glacial Miss Wix 5036 12K

CED	BW	WW	Milk	YW	\$W	\$F	\$G	\$B	Act. sc
4	2.2	56	21	101	29.83	37.94	25.39	52.06	37.1

BW	205R	YR	Marb.	REA	Fat
87	112	109	0.29	0.35	-0.01

- Tremendous depth of rib and fleshing ability.



Pyramid 8186 0211

Reg. 16676551 Tattoo: 0211 Calved: 4/17/2010

SAV Net Worth 4200 SAV 8180 Traveler 004 #
 SAV Pyramid 8186 SAV May 2410
 SAV Blackbird 5296 Boyd New Day 8005 #
 SAV Blackbird 1082
 OCC Traveler 723Z#
 GDAR Traveler 561# GDAR Forever Lady 177B
 Summit Valentine 371 Leachman Right Time#
 Mandys Valentine 603 Inniway MS Power Fix 435

CED	BW	WW	Milk	YW	\$W	\$F	\$G	\$B	Act. sc
5	2.3	47	21	85	25.64	25.38	18.48	47.74	37.1

BW	205R	YR	Marb.	REA	Fat
85	103	101	0.32	0.15	0.021

- Suitable for heifers
- Broody easy fleshing dam



Pyramid 8186 0205

Reg. 16676546 Tattoo: 0205 Calved: 4/18/2010

SAV Net Worth 4200 SAV 8180 Traveler 004 #
 SAV Pyramid 8186 SAV May 2410
 SAV Blackbird 5296 Boyd New Day 8005 #
 SAV Blackbird 1082
 OCC Traveler 723Z#
 GDAR Traveler 561# GDAR Forever Lady 177B
 Summit Lass 138# VNAR Famous#
 Summit Lass 9012 Beckys Lass 6902

CED	BW	WW	Milk	YW	\$W	\$F	\$G	\$B	Act. sc
8	1	52	23	90	30.24	28.39	17.44	47.77	36.3

BW	205R	YR	Marb.	REA	Fat
73	110	109	0.23	0.35	0.024

- Suitable for Heifers
- Pathfinder Dam
- Commanding phenotype



Pyramid 8186 0232

Reg. 16676570 Tattoo: 0232 Calved: 4/19/2010

SAV Net Worth 4200 SAV 8180 Traveler 004 #
 SAV Pyramid 8186 SAV May 2410
 SAV Blackbird 5296 Boyd New Day 8005 #
 SAV Blackbird 1082
 Basin Max 602C #
 Basin Pride 923M#
 Basin Max 2P48 Bon View New Design 878 #
 Summit Lady Blue 782 Farview Lady Blue 4224
 Farview Lady Blue 029

CED	BW	WW	Milk	YW	\$W	\$F	\$G	\$B	Act. sc
4	3.1	50	25	91	25.05	30.15	25.97	57.03	35.3

BW	205R	YR	Marb.	REA	Fat
88	108	102	0.48	0.38	0.028

- Excellent carcass data



Lot 7 - Pyramid Thunder 0443



Pyramid Thunder 0443

Reg. 16887063 Tattoo: 0443 Calved: 4/26/2010

Baldridge Kaboom K243 KCF Jauer 353 Traveler 589 27#
 Connealy Thunder Pleasanta of Conanga 736
 Parka of Conanga 241 # Bon View Bando 598 #
 SAV Final Answer 0035 # Partina of Conanga 6237
 SAV Madame Pride 2330 Sitz Traveler 8180 #
 SAV Madame Pride 0075 SAV Emulous 8145
 SAV 598 Bando 5175 #
 SAV Madame Pride 8264

CED	BW	WW	Milk	YW	\$W	\$F	\$G	\$B	Act. sc
1+7	1+.3	1+50	1+30	1+96	28.79	35.2	22.02	51.65	39.3

BW	205R	YR
86	100	100

Marb.	REA	Fat
0.23	0.37	-0.007

- Calving Ease with Performance



Lot 10 - Pyramid Game On 0130



Pyramid Game On 0130

Reg. 16760140 Tattoo: 0130 Calved: 3/14/2010

GAR Retail Product # GAR Precision 1680 #
 GAR Game On GAR Ext 4927
 GAR 1407 New Design 1683 Bon View New Design 1407 #
 High Valley 4C6 Ambush # GAR 616 Rito 3561
 Glacial Blackbird Eve 23K Paramount Ambush 2172 #
 Qas Blackbird Eve 23E Et 1X High Valley Gloria 1Q2
 Basin Q Bar 163 #
 QAS Blackbird Eve 601 1

CED	BW	WW	Milk	YW	\$W	\$F	\$G	\$B	Act. sc
8	0	47	22	82	32.15	22.47	29.24	49.67	41.4

BW	205R	YR
79	108	106

Marb.	REA	Fat
0.42	0.34	0.004

- 130 IMF 111 REA ratios
- Phenotypic standout
- Recommended for heifers



Pyramid Thunder 0444

Reg. 16887064 Tattoo: 0444 Calved: 4/27/2010

Baldridge Kaboom K243 KCF Jauer 353 Traveler 589 27#
 Connealy Thunder Pleasanta of Conanga 736
 Parka of Conanga 241 # Bon View Bando 598 #
 SAV Final Answer 0035 # Partina of Conanga 6237
 SAV Madame Pride 2330 Sitz Traveler 8180 #
 SAV Madame Pride 0075 SAV Emulous 8145
 SAV 598 Bando 5175 #
 SAV Madame Pride 8264

CED	BW	WW	Milk	YW	\$W	\$F	\$G	\$B	Act. sc
1+7	1+.3	1+50	1+30	1+96	28.79	35.2	28.68	55.41	39.6

BW	205R	YR
76	100	100

Marb.	REA	Fat
0.37	0.46	-0.004

- Calving Ease with Performance



Pyramid Game On 0134

Reg. 16796427 Tattoo: 0134 Calved: 3/16/2010

GAR Retail Product # GAR Precision 1680 #
 GAR Game On GAR Ext 4927
 GAR 1407 New Design 1683 Bon View New Design 1407 #
 Pine Creek Right Time 1147 # GAR 616 Rito 3561
 Glacial 1147 kATINKA 5n Leachman Right Time #
 Glacial Katinka 616 15L Sitz Everelda Entense 1137
 Rito 616 of 4B20 6807 #
 GP Katinka 505

CED	BW	WW	Milk	YW	\$W	\$F	\$G	\$B	Act. sc
7	2	48	20	92	26.51	31.93	22.97	47.41	38.2

BW	205R	YR
84	94	96

Marb.	REA	Fat
0.33	0.11	0.001

- 117 IMF ratio



Pyramid Thunder 0447

Reg. 16887066 Tattoo: 0447 Calved: 4/28/2010

Baldridge Kaboom K243 KCF Jauer 353 Traveler 589 27#
 Connealy Thunder Pleasanta of Conanga 736
 Parka of Conanga 241 # Bon View Bando 598 #
 SAV Final Answer 0035 # Partina of Conanga 6237
 SAV Madame Pride 2330 Sitz Traveler 8180 #
 SAV Madame Pride 0075 SAV Emulous 8145
 SAV 598 Bando 5175 #
 SAV Madame Pride 8264

CED	BW	WW	Milk	YW	\$W	\$F	\$G	\$B	Act. sc
1+7	1+.3	1+50	1+30	1+96	28.79	35.2	29.62	56.35	34.8

BW	205R	YR
91	100	100

Marb.	REA	Fat
0.37	0.48	-0.012

- Calving Ease with Performance



Pyramid Game On 0129

Reg. 16760130 Tattoo: 0129 Calved: 3/13/2010

GAR Retail Product # GAR Precision 1680 #
 GAR Game On GAR Ext 4927
 GAR 1407 New Design 1683 Bon View New Design 1407 #
 Glacial 7078 VRD 20N GAR 616 Rito 3561
 Glacial 20N BIKbird Eve 49S Vermilion Dateline 7078 #
 Glacial Blackbird Eve 23K KNM Enchantress 005
 High Valley 4C6 Ambush #
 Qas Blackbird Eve 23E Et 1X

CED	BW	WW	Milk	YW	\$W	\$F	\$G	\$B	Act. sc
7	1.3	45	19	88	26.03	29.09	31.57	52.52	-

BW	205R	YR
79	92	95

Marb.	REA	Fat
0.45	0.39	-0.003

- Recommended for heifers
- 124 IMF ratio

Angus



Lot 13 - Pyramid Predominant 0202



Pyramid Predominant 0202

Reg. 16676769 Tattoo: 0202 Calved: 4/19/2010

SAV 8180 Traveler 004 #
SAV 004 Predominant 4438
SAV Emblynette 1182

Basin Max 2P48
Summit Gina 652
Mandys Valentine 603

Sitz Traveler 8180 #
Boyd Forever Lady 8003
SAF 598 Bando 5175 #
SAV Emblynette 7319#
Basin Max 602C #
Basin Pride 923M#
Leachman Right Time#
Inniway MS Power Fix 435

CED	BW	WW	Milk	YW	\$W	\$F	\$G	\$B	Act. sc
8	1.2	54	19	92	30.63	29.6	13.89	46.42	39.3

BW	205R	YR	Marb.	REA	Fat
83	102	100	0.34	0.01	0.032

- Suitable for Heifers
- Dam is one of our best
- Tremendous balance and eye appeal



Pyramid Predominant 0308

Reg. 16979602 Tattoo: 0308 Calved: 4/23/2010

SAV 8180 Traveler 004 #
SAV 004 Predominant 4438
SAV Emblynette 1182

Leachman Right Time#
21AR Estrada B36
Estrada 231 of LH#

Sitz Traveler 8180 #
Boyd Forever Lady 8003
SAF 598 Bando 5175 #
SAV Emblynette 7319#
N Bar Emulation EXT #
Leachman Erica 0025
Tehama Bando 155 #
Estrada 275 of LH

CED	BW	WW	Milk	YW	\$W	\$F	\$G	\$B	Act. sc
1+7	1+1.4	1+46	1+26	1+73	31.75	14.33	11.74	41.57	45.3

BW	205R	YR	Marb.	REA	Fat
95	100	100	0.26	-0.07	0.018

- Embryo Transfer
- Numerous maternal brothers sold in last year's sale
- Excellent production & fertility in this cow family



Pyramid Bandos Pride 0460

Reg. 16887057 Tattoo: 0460 Calved: 4/14/2010

SAF 598 Bando 5175 #
SAV Bandos Pride 5265
SAV Madame Pride 2330

Alberda Traveler 416 #
SAV Primrose 1166#
SAV Primrose 5285#

Bon View Bando 598 #
SAF Royal Lass 1002
SAV Final Answer 0035 #
SAV Madame Pride 0075
DHD Traveler 6807 #
Alberda Queen Kimberly 222
Bon View Emulation Ext 473 #
SAV Primrose Star 1815

CED	BW	WW	Milk	YW	\$W	\$F	\$G	\$B	Act. sc
1+3	1+3.5	1+53	1+27	1+98	24.42	36.05	21.48	53.73	36.2

BW	205R	YR	Marb.	REA	Fat
87	100	100	1+.36	1+.16	1+.007

- Maternal with Performance
- Out of a Pathfinder



Lot 16 - Pyramid Bandos Pride 0461



Pyramid Bandos Pride 0461

Reg. 16887058 Tattoo: 0461 Calved: 4/15/2010

SAF 598 Bando 5175 #
SAV Bandos Pride 5265
SAV Madame Pride 2330

Alberda Traveler 416 #
SAV Primrose 1166#
SAV Primrose 5285#

Bon View Bando 598 #
SAF Royal Lass 1002
SAV Final Answer 0035 #
SAV Madame Pride 0075
DHD Traveler 6807 #
Alberda Queen Kimberly 222
Bon View Emulation Ext 473 #
SAV Primrose Star 1815

CED	BW	WW	Milk	YW	\$W	\$F	\$G	\$B	Act. sc
1+3	1+3.5	1+53	1+27	1+98	24.42	36.05	24.39	56.38	37.2

BW	205R	YR	Marb.	REA	Fat
83	100	100	1+.47	1+.11	1+.009

- Maternal with Performance
- Out of a Pathfinder



Pyramid Bandos Pride 0462

Reg. 16887060 Tattoo: 0462 Calved: 4/18/2010

SAF 598 Bando 5175 #
SAV Bandos Pride 5265
SAV Madame Pride 2330

Alberda Traveler 416 #
SAV Primrose 1166#
SAV Primrose 5285#

Bon View Bando 598 #
SAF Royal Lass 1002
SAV Final Answer 0035 #
SAV Madame Pride 0075
DHD Traveler 6807 #
Alberda Queen Kimberly 222
Bon View Emulation Ext 473 #
SAV Primrose Star 1815

CED	BW	WW	Milk	YW
1+3	1+3.5	1+53	1+27	1+98

\$W	\$F	\$G	\$B	Act. sc
24.42	36.05	23.08	55.33	37.3

BW	205R	YR
85	100	100

Marb.	REA	Fat
1+.38	1+.19	1+.003

- Maternal with Performance
- Out of a Pathfinder



Pyramid Bandos Pride 0463

Reg. 16887059 Tattoo: 0463 Calved: 4/19/2010

SAF 598 Bando 5175 #
SAV Bandos Pride 5265
SAV Madame Pride 2330

Alberda Traveler 416 #
SAV Primrose 1166#
SAV Primrose 5285#

Bon View Bando 598 #
SAF Royal Lass 1002
SAV Final Answer 0035 #
SAV Madame Pride 0075
DHD Traveler 6807 #
Alberda Queen Kimberly 222
Bon View Emulation Ext 473 #
SAV Primrose Star 1815

CED	BW	WW	Milk	YW
1+3	1+3.5	1+53	1+27	1+98

\$W	\$F	\$G	\$B	Act. sc
24.42	36.05	22.01	54.01	40

BW	205R	YR
86	100	100

Marb.	REA	Fat
1+.37	1+.11	1+.001

- Maternal with Performance
- Out of a Pathfinder



Pyramid 8646 Alliance 0153

Reg. 16758705 Tattoo: 0153 Calved: 4/1/2010

Sitz Alliance 6595 #
Sitz Alliance 8646
Sitz Barbaramere Nell 2309#

BT Traveler 228K#
Glacial Queen 82M
Oak Lane Queen 645

Sitz Traveler 8180 #
Sitz Barbaramere Jet 2698#
GDAR Traveler 044 #
Sitz Barbaramere Nell 887
Sitz Traveler 9929#
BT Everelda Entense 57D
Oak Lane Abundance 103
Oak Lane Queen 311

CED	BW	WW	Milk	YW
7	0.5	40	26	66

\$W	\$F	\$G	\$B	Act. sc
29.98	10.06	15.93	34.82	40

BW	205R	YR
85	114	109

Marb.	REA	Fat
0.25	-0.02	0.021

- Recommended for heifers



Lot 21 - Pyramid 8646 Alliance 0131



Lot 19 - Pyramid 8646 Alliance 0110



Pyramid 8646 Alliance 0131

Reg. 16758686 Tattoo: 0131 Calved: 3/14/2010

Sitz Alliance 6595 #
Sitz Alliance 8646
Sitz Barbaramere Nell 2309#

Glacial 7078 VRD 20N
Glacial 20N Enchantress 38R
Glacial Enchantress 21M

Sitz Traveler 8180 #
Sitz Barbaramere Jet 2698#
GDAR Traveler 044 #
Sitz Barbaramere Nell 887
Vermilion Dateline 7078 #
KNM Enchantress 005
Glacial Quantum 3330 15K
KNM Enchantress 005

CED	BW	WW	Milk	YW
8	0.6	37	21	71

\$W	\$F	\$G	\$B	Act. sc
25.22	15.71	20.43	36.95	-

BW	205R	YR
85	103	109

Marb.	REA	Fat
0.22	0.2	0.006

- 117 REA ratio



Pyramid 8646 Alliance 0110

Reg. 16758703 Tattoo: 0110 Calved: 3/6/2010

Sitz Alliance 6595 #
Sitz Alliance 8646
Sitz Barbaramere Nell 2309#

Glacial 7078 VRD 20N
Glacial Missie 20N 70R
Glacial Missie 043 3K

Sitz Traveler 8180 #
Sitz Barbaramere Jet 2698#
GDAR Traveler 044 #
Sitz Barbaramere Nell 887
Vermilion Dateline 7078 #
KNM Enchantress 005
Sitz Traveler 043#
Valley Missie 542

CED	BW	WW	Milk	YW
9	0.4	31	21	59

\$W	\$F	\$G	\$B	Act. sc
24.53	6.91	15.37	25.97	38.1

BW	205R	YR
77	94	99

Marb.	REA	Fat
0.15	0.1	0.021

- Recommended for heifers
- Tremendous cow family



Pyramid 8646 Alliance 0155

Reg. 16758697 Tattoo: 0155 Calved: 4/1/2010

Sitz Alliance 6595 #
Sitz Alliance 8646
Sitz Barbaramere Nell 2309#

BT Traveler 228K#
Glacial Shoshone Lady 29P #
TLA Shoshone Lady 935#

Sitz Traveler 8180 #
Sitz Barbaramere Jet 2698#
GDAR Traveler 044 #
Sitz Barbaramere Nell 887
Sitz Traveler 9929#
BT Everelda Entense 57D
RCC A032 Rito 8704 5036
Heartland Shoshone Lady 533

CED	BW	WW	Milk	YW
8	0	30	27	60

\$W	\$F	\$G	\$B	Act. sc
25.01	8.14	13.01	30.85	38.9

BW	205R	YR
80	98	99

Marb.	REA	Fat
1+.17	1-.06	1+.015

- Recommended for heifers
- Out of a Pathfinder dam

Angus



Lot 25 - Pyramid 8186 0306



Lot 23 - Pyramid Extra 0281



Pyramid 8186 0306

Reg. 16978742 Tattoo: 0306 Calved: 4/23/2010

SAV Net Worth 4200
SAV Pyramid 8186
SAV Blackbird 5296

SAV 8180 Traveler 004 #
SAV May 2410
Boyd New Day 8005 #
SAV Blackbird 1082
DHD Traveler 6807 #
Eila Eila of Conanga #
OCC Traveler 723Z#
Farview Lady Erica 282

Connealy Dateline#
Summit Lady Erica 101
Farview Lady Erica 756#

CED	BW	WW	Milk	YW	\$W	\$F	\$G	\$B	Act. sc
1+7	1+2.3	1+44	1+27	1+82	25.55	23.59	24.46	53.27	36.2

BW	205R	YR
88	100	100

Marb	REA	Fat
0.31	0.62	0.022

- Embryo Transfer
- Dominating cow family
- Tremendous balance and eye appeal



Lot 26 - Pyramid 8186 0309



Pyramid Extra 0281

Reg. 16978740 Tattoo: 0281 Calved: 2/2/2010

N Bar Emulation EXT #
Sinclair Extra 4X13
N Bar Lady Ida SCC 2P37

Emulation N Bar 5522#
N Bar Primrose 2424
N Bar Prime Time D806 #
N Bar Lady Ida F1080
AAR New Trend#
BT Everelda Entense 57D
Mc Cumber Powertrain HC

BT New Trend 172K#
Blackcap 311 of Mc Cumber
1025 Blackcap 9125 of Mc Cumber

Blackcap 532 of Mc Cumber

CED	BW	WW	Milk	YW	\$W	\$F	\$G	\$B	Act. sc
7	0.8	36	24	56	30.04	2.57	19.4	45.53	38.7

BW	205R	YR
88	103	92

Marb	REA	Fat
1+.46	1-.17	1+.011

- Suitable for Heifers
- Deep sided; great fleshing ability



Pyramid 8186 0303

Reg. 16978741 Tattoo: 0303 Calved: 4/19/2010

SAV Net Worth 4200
SAV Pyramid 8186
SAV Blackbird 5296

SAV 8180 Traveler 004 #
SAV May 2410
Boyd New Day 8005 #
SAV Blackbird 1082
DHD Traveler 6807 #
Eila Eila of Conanga #
OCC Traveler 723Z#
Farview Lady Erica 282

Connealy Dateline#
Summit Lady Erica 101
Farview Lady Erica 756#

CED	BW	WW	Milk	YW	\$W	\$F	\$G	\$B	Act. sc
1+7	1+2.3	1+44	1+27	1+82	25.55	23.59	23.89	54.67	37.6

BW	205R	YR
86	100	100

Marb	REA	Fat
0.31	0.63	0.022

- Embryo Transfer
- Exceptional muscle and stoutness
- Used in our program this breeding season



Pyramid 8186 0309

Reg. 16978739 Tattoo: 0309 Calved: 4/20/2010

SAV Net Worth 4200
SAV Pyramid 8186
SAV Blackbird 5296

SAV 8180 Traveler 004 #
SAV May 2410
Boyd New Day 8005 #
SAV Blackbird 1082
DHD Traveler 6807 #
Eila Eila of Conanga #
OCC Traveler 723Z#
Farview Lady Erica 282

Connealy Dateline#
Summit Lady Erica 101
Farview Lady Erica 756#

CED	BW	WW	Milk	YW	\$W	\$F	\$G	\$B	Act. sc
1+7	1+2.3	1+44	1+27	1+82	25.55	23.59	23.4	53.94	35.2

BW	205R	YR
86	100	100

Marb	REA	Fat
0.32	0.49	0.015

- Embryo Transfer
- Full brother to 0303 and 0306
- Dam has a WR of 6@110





Lot 29 - Pyramid Renovator 0408



Pyramid Renovator 0408

Reg. 16887042 Tattoo: 0408 Calved: 4/18/2010

SAV 004 Density 4336
YT Short Pines Renovator 830
SAV Madame Pride 2330

Connealy Full Freight
YT Primrose 805
SAV Primrose 1166#

SAV 8180 Traveler 004 #
SAV May 7238
SAV Final Answer 0035 #
SAV Madame Pride 0075
Connealy Freightliner #
Powesta of Conanga 687 15
Alberda Traveler 416 #
SAV Primrose 5285#

CED	BW	WW	Milk	YW
11	-0.1	40	25	78

\$W	\$F	\$G	\$B	Act. sc
26.8	21.23	19.63	47.16	37

BW	205R	YR
62	87	91

Marb	REA	Fat
0.4	0.14	0.034

- Calving ease
- Will moderate cow size.



Lot 27 - Pyramid Dakota Creek 0405



Pyramid Renovator 0409

Reg. 16887044 Tattoo: 0409 Calved: 4/22/2010

SAV 004 Density 4336
YT Short Pines Renovator 830
SAV Madame Pride 2330

Connealy Full Freight
YT Cheryl 803
SAV Cheryl 4141

SAV 8180 Traveler 004 #
SAV May 7238
SAV Final Answer 0035 #
SAV Madame Pride 0075
Connealy Freightliner #
Powesta of Conanga 687 15
Bon View New Design 878 #
SAV Cheryl 2308

CED	BW	WW	Milk	YW
8	1.5	50	27	93

\$W	\$F	\$G	\$B	Act. sc
28.06	32.16	14.03	47.56	36.9

BW	205R	YR
72	95	102

Marb	REA	Fat
0.35	0.06	0.036

- Calving ease with style



Pyramid Dakota Creek 0405

Reg. 16887041 Tattoo: 0405 Calved: 4/16/2010

Mytty In Focus #
Lemar Dakota Gold 18T
Lemar Peggy 74R

SAV 004 Density 4336
YT Madame Pride 820
SAV Madame Pride 2330

SAF Focus of ER #
Mytty Countess 906
SAV Final Answer 0035 #
Lemar Peggy 29K
SAV 8180 Traveler 004 #
SAV May 7238
SAV Final Answer 0035 #
SAV Madame Pride 0075

CED	BW	WW	Milk	YW	\$W	\$F	\$G	\$B	Act. sc
13	-0.8	57	27	99	33.3	35.49	20.16	52.95	40

BW	205R	YR
64	110	102

Marb	REA	Fat
0.39	0.21	0.028

- Calving Ease with a Great EPD Spread



Lot 31 - Pyramid 19T Total 0133



Pyramid 19T Total 0133

Reg. 16758691 Tattoo: 0133 Calved: 3/14/2010

KCF Bennett Total #
Glacial Total 19T
Glacial 1147 Melody 2N

Glacial 616 Rito 6P
Glacial 6P Missie 7T
Glacial Missie 20N 70R

Sitz Alliance 6595 #
Ext of Conanga 6790
Pine Creek Right Time 1147 #
Glacial Melody 616 9L
Rito 616 of 4B20 6807 #
Glacial Blackbird 7M#
Glacial 7078 VRD 20N
Glacial Missie 043 3K

CED	BW	WW	Milk	YW	\$W	\$F	\$G	\$B	Act. sc
4	3	46	27	80	26.12	20.92	20.83	50.47	38.7

BW	205R	YR
84	95	96

Marb	REA	Fat
0.6	0.05	0.047

- Maternal
- Out of a super cow.

- Recommended for heifers.
- Maternal brother to Pyramid herd sire Conservative



Pyramid 19T Total 0152

Reg. 16758688 Tattoo: 0152 Calved: 3/30/2010

KCF Bennett Total #
 Glacial Total 19T
 Glacial 1147 Melody 2N
 Glacial 616 Rito 6P
 Glacial 6P Blackbird Eve 13T
 Glacial 20N Blackbird Eve 29R

Sitz Alliance 6595 #
 Ext of Conanga 6790
 Pine Creek Right Time 1147 #
 Glacial Melody 616 9L
 Rito 616 of 4B20 6807 #
 Glacial Blackbird 7M#
 Glacial 7078 VRD 20N
 Glacial Blackbird Eve 33M

CED	BW	WW	Milk	YW	\$W	\$F	\$G	\$B	Act. sc
3	2.2	50	22	88	27.27	27.18	7.19	35.04	37

BW	205R	YR
89	115	107

Marb	REA	Fat
0.03	0.25	0.032



Lot 33 - Pyramid Predominant 0172



Pyramid Predominant 0172

Reg. 17016090 Tattoo: 0172 Calved: 3/11/2010

S A V 8180 Traveler 004 #
 S A V 004 Predominant 4438
 S A V Emblynette 1182
 Rito 616 of 4B20 6807 #
 Glacial Missie 616 6L
 T L A Missie 909

Sitz Traveler 8180 #
 Boyd Forever Lady 8003
 S A F 598 Bando 5175 #
 S A V Emblynette 7319 #
 D H D Traveler 6807 #
 Rita 4B20 of OFB1 Bando
 Mc Bee WMR Super X 745 #
 Valley Missie 542

CED	BW	WW	Milk	YW	\$W	\$F	\$G	\$B	Act. sc
I+11	I+.6	I+51	I+23	I+86	32.58	24.84	18.16	50.12	40.4

BW	205R	YR
86	ET	ET

Marb	REA	Fat
I+0.37	I+0.24	I+.035

- Recommended for heifers
- Embryo Transfer



Pyramid Predominant 0174

Reg. +17016091 Tattoo: 0174 Calved: 3/15/2010

S A V 8180 Traveler 004 #
 S A V 004 Predominant 4438
 S A V Emblynette 1182
 Rito 616 of 4B20 6807 #
 Glacial Missie 616 6L
 T L A Missie 909

Sitz Traveler 8180 #
 Boyd Forever Lady 8003
 S A F 598 Bando 5175 #
 S A V Emblynette 7319 #
 D H D Traveler 6807 #
 Rita 4B20 of OFB1 Bando
 Mc Bee WMR Super X 745 #
 Valley Missie 542

CED	BW	WW	Milk	YW	\$W	\$F	\$G	\$B	Act. sc
I+11	I+.6	I+51	I+23	I+86	32.58	24.84	18.16	50.12	36

BW	205R	YR
86	ET	ET

Marb	REA	Fat
I+0.37	I+0.24	I+.035

- Recommended for heifers
- Embryo Transfer



Pyramid 8186 0224

Reg. 16676562 Tattoo: 0224 Calved: 4/17/2010

SAV Net Worth 4200
 SAV Pyramid 8186
 SAV Blackbird 5296
 21AR Bushwacker E31A
 21AR Blackbird Lady 6358
 21AR Blackbird Lady B658

SAV 8180 Traveler 004 #
 SAV May 2410
 Boyd New Day 8005 #
 SAV Blackbird 1082
 BCC Bushwacker 41-93 #
 MS CC Blackcap 0196-211
 GDAR SVF Traveler 234D #
 21 AR Blackbird Lady 658#

CED	BW	WW	Milk	YW	\$W	\$F	\$G	\$B	Act. sc
3	3.3	42	24	80	22.11	22.41	23.38	52.32	37.4

BW	205R	YR
86	99	101

Marb	REA	Fat
0.32	0.41	0.011

- Predictable pedigree
- Rugged design



Pyramid 8186 0212

Reg. 16676552 Tattoo: 0212 Calved: 4/24/2010

SAV Net Worth 4200
 SAV Pyramid 8186
 SAV Blackbird 5296
 TM Outreach 027E
 Farview Lady Blanche 4150
 Farview Lady Blanche 1153#

SAV 8180 Traveler 004 #
 SAV May 2410
 Boyd New Day 8005 #
 SAV Blackbird 1082
 DHD Traveler 6807 #
 Eldorado 3134 Ideal 8214 156
 N Bar Emulation Ext V1624C
 Farview Lady Blanche 617#

CED	BW	WW	Milk	YW	\$W	\$F	\$G	\$B	Act. sc
4	2.7	46	24	92	22.58	32.71	18.07	49.12	35.9

BW	205R	YR
89	108	110

Marb	REA	Fat
0.3	0.35	0.039

- Great performance
- Tremendous dam



Pyramid 8186 0222

Reg. 16676560 Tattoo: 0222 Calved: 5/13/2010

S A V Net Worth 4200
 S A V Pyramid 8186
 S A V Blackbird 5296
 21AR Right Time C572
 21AR Esther 6365
 21AR Esther C79

S A V 8180 Traveler 004 #
 S A V May 2410
 Boyd New Day 8005 #
 S A V Blackbird 1082
 Leachman Right Time #
 21 A R Blackbird Lady 572 #
 Leachman Right Time #
 Esther 131 of L H

CED	BW	WW	Milk	YW	\$W	\$F	\$G	\$B	Act. sc
6	1.8	33	24	71	21.39	17.16	12.15	11.26	37.4

BW	205R	YR
86	100	101

Marb	REA	Fat
0.32	0.41	0.011

- Suitable for heifers
- Beautifully udded dam



Pyramid 8186 0254

Reg. 16905642 Tattoo: 0254 Calved: 4/27/2010

SAV Net Worth 4200
 SAV Pyramid 8186
 SAV Blackbird 5296
 Rito 616 of 4B20 6807 #
 Summit Lass 463
 Summit Lass 923

SAV 8180 Traveler 004 #
 SAV May 2410
 Boyd New Day 8005 #
 SAV Blackbird 1082
 DHD Traveler 6807 #
 Rita 4B20 of OFB1 Bando
 Papa Power Intense 464
 Vermilion Lass 6546

CED	BW	WW	Milk	YW	\$W	\$F	\$G	\$B	Act. sc
4	2.8	42	22	81	22.46	23.37	21.01	48.28	36.6

BW	205R	YR
88	97	97

Marb	REA	Fat
0.27	0.26	0.004

- Beautifully udded 616 dam



Lot 39 - Pyramid Bandos Pride 0410

39 Pyramid Bandos Pride 0410

Reg. 16887050 Tattoo: 0410 Calved: 4/23/2010

SAF 598 Bando 5175 #
SAV Bandos Pride 5265
SAV Madame Pride 2330

Bon View New Design 878 #
SAV Cheryl 4141
SAV Cheryl 2308

Bon View Bando 598 #
SAF Royal Lass 1002
SAV Final Answer 0035 #
SAV Madame Pride 0075
B/R New Design 036 #
Bon View Gammer 85
SAV 8180 Traveler 004 #
SAV Cheryl 9030#

CED	BW	WW	Milk	YW	\$W	\$F	\$G	\$B	Act. sc
6	2.6	59	30	106	28.31	41.94	19.77	56.33	39.9

BW	205R	YR	Marb	REA	Fat
78	102	104	0.39	0.2	0.018

- Beautifully uddered dam.
- Phenotype with performance.

40 Pyramid Bandos Pride 0412

Reg. 16887051 Tattoo: 0412 Calved: 4/23/2010

SAF 598 Bando 5175 #
SAV Bandos Pride 5265
SAV Madame Pride 2330

OCC Great Plains 943G #
Sitz Emma E 412
Sitz Emma E 3300#

Bon View Bando 598 #
SAF Royal Lass 1002
SAV Final Answer 0035 #
SAV Madame Pride 0075
N Bar Emulation EXT #
Dixie Erica of CH 1019
SAF Focus of ER #
Sitz Emma E 1022#

CED	BW	WW	Milk	YW	\$W	\$F	\$G	\$B	Act. sc
5	3	59	27	108	26.48	44.04	23.25	60.45	39.9

BW	205R	YR	Marb	REA	Fat
83	107	111	0.37	0.39	0.008

- Beautifully uddered Great Plains dam.
- Extra growth and performance.

41 PYRAMID Predominant 0147

Reg. 16850360 Tattoo: 0147 Calved: 3/27/2010

SAV 8180 Traveler 004 #
SAV 004 Predominant 4438
SAV Emblynette 1182

Glacial 616 Rito 6P
Glacial 6P Lovely 54S
Glacial Lovely 53M

Sitz Traveler 8180 #
Boyd Forever Lady 8003
SAF 598 Bando 5175 #
SAV Emblynette 7319 #
Rito 616 of 4B20 6807 #
Glacial Blackbird 7M #
Glacial Quantum 3330 15K
KNM Lovely 044#

CED	BW	WW	Milk	YW	\$W	\$F	\$G	\$B	Act. sc
6	2.3	49	22	80	29.23	19.81	21.58	48.78	39.3

BW	205R	YR	Marb	REA	Fat
84	101	95	0.36	0.05	0

- 118 IMF ratio

42 Pyramid Predominant 0173

Reg. 16676748 Tattoo: 0173 Calved: 3/14/2010

S A V 8180 Traveler 004 #
S A V 004 Predominant 4438
S A V Emblynette 1182

Pine Creek Right Time 1147 #
Glacial Blackbird 7M #
Glacial Blackbird 887

Sitz Traveler 8180 #
Boyd Forever Lady 8003
S A F 598 Bando 5175 #
S A V Emblynette 7319 #
Leachman Right Time #
Sitz Everelda Entense 1137
R C C 9929 887
Valley Blackbird 206

CED	BW	WW	Milk	YW	\$W	\$F	\$G	\$B	Act. sc
1+7	1+2.1	1+51	1+23	1+90	32.12	28.77	11.00	44.13	38.9

BW	205R	YR	Marb	REA	Fat
81	ET	ET	1+.29	1+.14	1+.049

- Out of a Pathfinder dam
- Embryo Transfer

43 Pyramid Bandwagon 0242

Reg. 16676748 Tattoo: 0242 Calved: 4/19/2010

Leachman Right Time #
LT Bandwagon 3105
LT Ms Vikings Value 0256

Sitz Onward 321R
McLennan Barbaramere 825U
Bebos Barbaramere 5103

N Bar Emulation EXT #
Leachman Erica 0025
Sitz Value 7097 #
MS Polo Peak 1148 5970 #
Connealy Onward 1
Sitz Pride 62M
SAV 8180 Traveler 004 #
Bebos Barbaramere 3222

CED	BW	WW	Milk	YW	\$W	\$F	\$G	\$B	Act. sc
8	2	50	23	97	26.25	36.22	10.17	43.17	40.6

BW	205R	YR	Marb	REA	Fat
81	104	112	0.27	-0.06	0.034

- Suitable for heifers
- Tremendous cow family

44 Pyramid Outfitter 0246

Reg. 16677413 Tattoo: 0246 Calved: 4/21/2010

OCC Magnitude 805M
21AR Outfitter 6032
21AR Sara E802

HA Image Maker 0415 #
McLennan Barbaramere 806U
Bebos Barbaramere 5179

OCC Emblazon 854E #
OCC Pollyanna 878G
BCC Bushwacker 41-93 #
21 AR Sara 802
Hero 6267 of RR 2418 #
HA Rito Blackcap 9038
Leachman Right Time #
Bebos Barbaramere 111

CED	BW	WW	Milk	YW	\$W	\$F	\$G	\$B	Act. sc
1	2.1	50	30	86	30.64	25.22	18.01	41.85	37.4

BW	205R	YR	Marb	REA	Fat
79	106	102	0.26	0.05	0.011

- Suitable for heifers
- Tremendous cow family

45 Pyramid 8186 0250

Reg. 16905640 Tattoo: 0250 Calved: 6/4/2010

SAV Net Worth 4200
SAV Pyramid 8186
SAV Blackbird 5296

Leachman Right Time #
Summit Queen Mother 357 #
Summit Dateline 133

SAV 8180 Traveler 004 #
SAV May 2410
Boyd New Day 8005 #
SAV Blackbird 1082
N Bar Emulation EXT #
Leachman Erica 0025
Connealy Dateline #
Summit Queen Mother 912

CED	BW	WW	Milk	YW	\$W	\$F	\$G	\$B	Act. sc
8	1.5	40	26	76	25.97	19.32	20.04	47.13	37.4

BW	205R	YR	Marb	REA	Fat
82	98	92	0.32	0.17	0.015

- Suitable for heifers
- Pathfinder dam
- Dam has a WR of 6 @ 108

Angus



Pyramid 8186 0252

Reg. 16905641 Tattoo: 0252 Calved: 6/7/2010

SAV Net Worth 4200
SAV Pyramid 8186
SAV Blackbird 5296

GDAR Traveler 561#
Summit Lassie 396
Summit Lassie 804

SAV 8180 Traveler 004 #
SAV May 2410
Boyd New Day 8005 #
SAV Blackbird 1082
OCC Traveler 723Z#
GDAR Forever Lady 177B
Heathcote 5204 Traveler 110A
Vermilion Lassie 6716

CED	BW	WW	Milk	YW
7	1.5	47	21	86

\$W	\$F	\$G	\$B	Act. sc
26.96	26.36	21.12	48.35	25.6

BW	205R	YR
84	100	102

Marb	REA	Fat
0.36	0.17	0.021

- Suitable for Heifers
- Powerful, easy fleshing dam



Pyramid 19T Total 0169

Reg. 16758694 Tattoo: 0169 Calved: 5/19/2010

KCF Bennett Total #
Glacial Total 19T
Glacial 1147 Melody 2N

Glacial 616 Rito 6P
Glacial 6P Lovely 22S
Glacial 616 Lovely 5P

Sitz Alliance 6595 #
Ext of Conanga 6790
Pine Creek Right Time 1147 #
Glacial Melody 616 9L
Rito 616 of 4B20 6807 #
Glacial Blackbird 7M#
Rito 616 of 4B20 6807 #
Glacial Lovely 53M

CED	BW	WW	Milk	YW
7	0.8	41	18	79

\$W	\$F	\$G	\$B	Act. sc
24.74	21.82	13.58	36.88	36

BW	205R	YR
82	99	99

Marb	REA	Fat
0.12	0.2	0.018

- The 19T females are tremendous uddered
- Moderate framed and right for the country



Pyramid 19T Total 0117

Reg. 16758687 Tattoo: 0117 Calved: 3/8/2010

KCF Bennett Total #
Glacial Total 19T
Glacial 1147 Melody 2N

Feltons Meat Packer 62 #
Glacial 62 Blackbird Eve 1T
Glacial Blackbird Eve 3P

Sitz Alliance 6595 #
Ext of Conanga 6790
Pine Creek Right Time 1147 #
Glacial Melody 616 9L
Finks 5522-6148#
Graham N Mistress 8
Rito 616 of 4B20 6807 #
Glacial Blackbird Eve 33M

CED	BW	WW	Milk	YW
9	-0.1	44	21	80

\$W	\$F	\$G	\$B	Act. sc
28.25	21.66	22.75	45.14	38.4

BW	205R	YR
80	104	102

Marb	REA	Fat
0.33	0.29	0.023

- Suitable for Heifers
- Pathfinder Dam
- Dam has a WR of 6@108



Pyramid Outfitter 0265

Reg. 16987678 Tattoo: 0265 Calved: 4/17/2010

OCC Magnitude 805M
21AR Outfitter 6032
21AR Sara E802

SAV 004 Traveler 4412
McLennan Estrada 819U
21AR Esther 6391

OCC Emblazon 854E #
OCC Pollyanna 878G
BCC Bushwacker 41-93 #
21 AR Sara 802
SAV 8180 Traveler 004 #
SAV Erica 0178
21AR Right Time C572
21AR Esther D96A

CED	BW	WW	Milk	YW
-4	3.8	46	27	89

\$W	\$F	\$G	\$B	Act. sc
23.38	29.7	11.11	37.97	34.6

BW	205R	YR
85	103	103

Marb	REA	Fat
0.16	-0.07	0.013

- Great uddered and efficient dam and granddam



Pyramid 8186 0300

Reg. 17004816 Tattoo: 0300 Calved: 4/20/2010

SAV Net Worth 4200
SAV Pyramid 8186
SAV Blackbird 5296

Leachman Right Time#
Vermilion Lass 6565
Vermilion O Lass 4253

SAV 8180 Traveler 004 #
SAV May 2410
Boyd New Day 8005 #
SAV Blackbird 1082
N Bar Emulation EXT #
Leachman Erica 0025
Baldrige Oscar #
Vermilion Lass 0169

CED	BW	WW	Milk	YW
1+5	2.6	45	22	76

\$W	\$F	\$G	\$B	Act. sc
26.55	17.49	16.81	45.65	35

BW	205R	YR
84	102	99

Marb	REA	Fat
0.22	0.27	0.014

- Embryo transfer
- Suitable for heifers
- Dam is backbone to our whole program.



Pyramid 004 Traveler 0301

Reg. 16979599 Tattoo: 0301 Calved: 4/24/2010

Sitz Traveler 8180 #
SAV 8180 Traveler 004 #
Boyd Forever Lady 8003

Leachman Right Time#
Vermilion Lass 6565
Vermilion O Lass 4253

GDAR Traveler 71 #
Sitz Everelda Entense 1137
AAR New Trend#
SVF Forever Lady 57D
N Bar Emulation EXT #
Leachman Erica 0025
Baldrige Oscar #
Vermilion Lass 0169

CED	BW	WW	Milk	YW
1+4	1.6	46	19	77

\$W	\$F	\$G	\$B	Act. sc
28.59	18.07	8.02	38.67	39.4

BW	205R	YR
80	94	97

Marb	REA	Fat
0.27	0.05	0.056

- Suitable for heifers
- Embryo transfer
- Full brother to 0302





Lot 52 - Pyramid 004 Traveler 0302

52 Pyramid 004 Traveler 0302

Reg. 16979594 Tattoo: 0302 Calved: 4/26/2010

Sitz Traveler 8180 #
 SAV 8180 Traveler 004 #
 Boyd Forever Lady 8003

Leachman Right Time#
 Vermilion Lass 6565
 Vermilion O Lass 4253

GDAR Traveler 71 #
 Sitz Everelda Entense 1137
 AAR New Trend#
 SVF Forever Lady 57D
 N Bar Emulation EXT #
 Leachman Erica 0025
 Baldrige Oscar #
 Vermilion Lass 0169

CED	BW	WW	Milk	YW	\$W	\$F	\$G	\$B	Act. sc
1+4	3.8	48	19	80	24.6	20.18	-0.43	30.9	35.7
BW	205R	YR	Marb	REA	Fat				
92	104	104	0.16	-0.09	0.059				

- Embryo transfer
- Dam has WR of 12 @ 104



Pyramid Full Freight Lot 53 - 0449

53 Pyramid Full Freight 0449

Reg. 16897666 Tattoo: 0449 Calved: 4/28/2010

Connealy Freightliner #
 Connealy Full Freight
 Powesta of Conanga 687 15

SAV Final Answer 0035 #
 SAV Madame Pride 2330
 SAV Madame Pride 0075

Bon View Bando 598 #
 Joana Erica of Conanga
 Twin Valley Precision E161 #
 Pow of Conanga 677 #
 Sitz Traveler 8180 #
 SAV Emulous 8145
 SAF 598 Bando 5175 #
 SAV Madame Pride 8264

CED	BW	WW	Milk	YW	\$W	\$F	\$G	\$B	Act. sc
1+9	1+.6	1+47	1+27	1+87	29	27.34	17.76	45.64	-
BW	205R	YR	Marb	REA	Fat				
89	100	100	0.32	0.16	0.032				

- Calving ease
- Embryo Transfer.
- Out of a great cow.

54 Pyramid Full Freight 0427

Reg. 16887047 Tattoo: 0427 Calved: 6/6/2010

Connealy Full Freight
 YT Ringo 802
 SAV Cheryl 2308

Bon View New Design 1407#
 Sitz Elsiemere 63N#
 Sitz Elsiemere 1020

Connealy Freightliner #
 Powesta of Conanga 687 15
 SAV 8180 Traveler 004 #
 SAV Cheryl 9030#
 B/R New Design 036 #
 Bon View Pride 664
 DHD Traveler 6807 #
 Sitz Elsiemere 2256

CED	BW	WW	Milk	YW	\$W	\$F	\$G	\$B	Act. sc
5	2.3	42	29	74	26.78	16.71	13.62	35.15	37
BW	205R	YR	Marb	REA	Fat				
87	99	94	0.21	0.1	0.036				

- Stylish and moderate.
- Out of a Pathfinder cow.

55 Pyramid Full Freight 0425

Reg. 16887055 Tattoo: 0425 Calved: 5/31/2010

Connealy Full Freight
 YT Ringo 802
 SAV Cheryl 2308

Sitz Alliance 6595 #
 Sitz Barbaramere 2572#
 Sitz Barbaramere 1662#

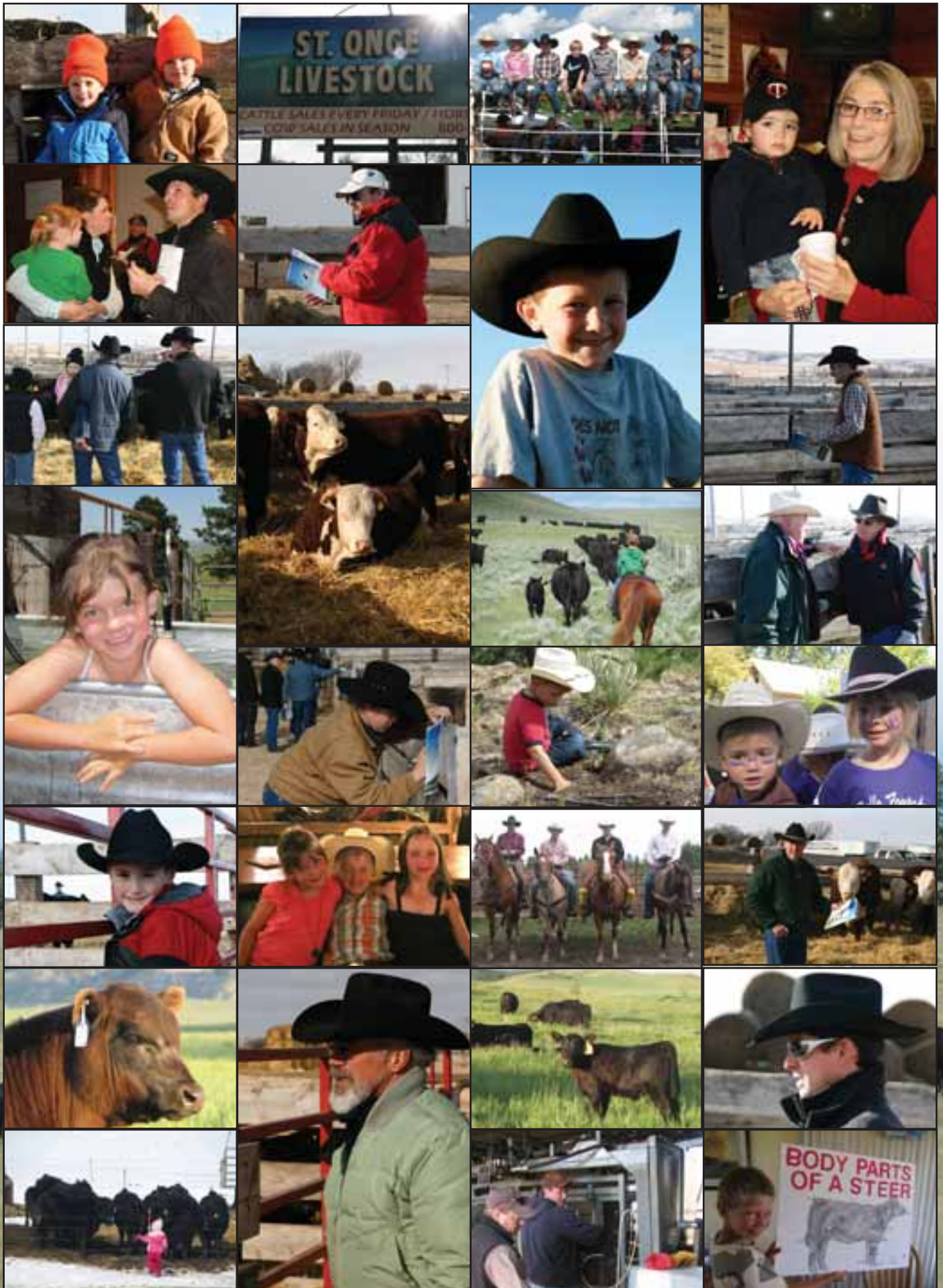
Connealy Freightliner #
 Powesta of Conanga 687 15
 SAV 8180 Traveler 004 #
 SAV Cheryl 9030#
 Sitz Traveler 8180 #
 Sitz Barbaramere Jet 2698#
 Hyline SVF Traveler 0100
 Sitz Barbaramere 1339

CED	BW	WW	Milk	YW	\$W	\$F	\$G	\$B	Act. sc
5	2.4	42	26	79	24.67	21.45	5.42	33.37	39.4
BW	205R	YR	Marb	REA	Fat				
80	94	97	0.18	-0.05	0.048				

- Moderate and very complete
- Balanced
- Out of a Pathfinder dam



Angus





Pyramid Beef 2nd Annual Sale, Dec. 3, 2011, 1 p.m., St. Onge, SD

Hereford Reference Sires



THR Thor 4029



THR Thor 4029

Reg. 42551314 Tattoo: 613 Calved:3/06/04

JDF 16D Wrangler 15
JDH 15 Wrangler 25L
Jdh Ms Lute 18J

CI 1 Domino 641F
THR Miss Thor 0266
THR Miss Thor 8050

NJW 5B Wrangler 16Dd
JDF Miss 223B 4E
Walsh Mccann 680 46G
JDH Ms Wrangler 04
HH Advance 438D
CL 1 Dominette 436
HH Advance 6046F
THR Miss Thor 0231

CED	BW	WW	Milk	YW	\$BMI	\$CEZ	\$BII	\$CHB
+3.1	2.9	+58	+232	+111	24	18	19	32

BW	205R	YR

Marb.	REA	Fat
0.14	0.79	0.016



CJH Harland 408



CJH Harland 408

Reg. 15490794 Tattoo: 613 Calved:1/12/06

KB L1 Domino 519
HH Advance 9005j
HH Ms Advance 4054d

L1 Domino 920501
CJH L1 Dominette 0064
CJH L1 Dominette 759

HH Advance 311c
CL 1 Dominette 6008
L1 Domino 910282
HH Miss Advance 218b
L1 Domino 890029
L1 Dominette 850206
JA L1 Domino 5301
CJH L1 Dominette 505

CED	BW	WW	Milk	YW	\$BMI	\$CEZ	\$BII	\$CHB
+3.7	1.6	+56	+32	+99	28	19	25	34

BW	205R	YR

Marb.	REA	Fat
0.62	0.26	0.10

Hereford



THE POWER OF BLACK. ONLY BETTER.

HEREFORDS - THE EFFICIENCY EXPERTS

Adding Hereford genetics to your herd makes perfect business sense in a cost-driven economy. Excellent conversion, hardiness, fertility, longevity and even disposition can help reduce input costs. These Hereford efficiencies are ideal for your herd, your business and your plans for the future. Low-maintenance cattle, long-term profit. Now that's power.

American Hereford Association - P.O. Box 014059, Kansas City, MO 64101 - (816) 842-3757 - www.hereford.org



© 2008 American Hereford Association



Lot 57 - Pyramid 4029 Thor 013



Pyramid 4029 Thor 013

Reg. 43102641 Tattoo: 13X Calved: 03/26/10

JDH 15 Wrangler 251
THR Thor 4029
THR Miss Thor 0266

BP Klondike 602 904 18L
FHF 18L Eva 38P
FHF 0112 Eva 34M

JDF 16D Wrangler 15
JDH MS Lute 18J
CI 1 Domino 641F
THR Miss Thor 8050
Klondike 28U 602C
Bp Miss 904D
Boyd Cow Maker 0112
FHF 534E CI Dominete 85J

CED	BW	WW	Milk	YW
1.7	2.7	41	21	73

\$BMI	\$CEZ	\$BLL	\$CHB	Act. sc
16	16	14	21	37.6

BW	205R	YR
84	97	99

Marb	REA	Fat
.05	.37	-.010

- Phenotypic and carcass standout



Lot 56 - Pyramid 4029 Thor 031



Pyramid 4029 Thor 022

Reg. 43102625 Tattoo: 22X Calved: 03/31/10

JDH 15 Wrangler 251
THR Thor 4029
THR Miss Thor 0266

BP Klondike 602 904 18L
FHF 18I Ruth 18P
FHF 19H Ruth 70M

JDF 16D Wrangler 15
JDH Ms Lute 18J
CI 1 Domino 641F
THR Miss Thor 8050
Klondike 28U 602C
Bp Miss 904D
FHF 8403 Starbuck 19H
FHF 35C Ruth 30H

CED	BW	WW	Milk	YW
2.2	2.1	49	18	82

\$BMI	\$CEZ	\$BLL	\$CHB	Act. sc
21	17	18	26	39.2

BW	205R	YR
80	102	101

Marb	REA	Fat
.17	.52	-.010

- Recommended for heifers.



Pyramid 4029 Thor 031

Reg. 43102656 Tattoo: 31X Calved: 04/05/10

JDH 15 Wrangler 251
THR Thor 4029
THR Miss Thor 0266

FHF Benchmark 534E
FHF 534E Sarah 61J
FHF Sarah 162A 58F

JDF 16D Wrangler 15
JDH Ms Lute 18J
CI 1 Domino 641F
THR Miss Thor 8050
FHF CI Domino 614R 77U
FHF CI Dominette 32P
DL Victor 85X 162A
FHF Ruth 57Y

CED	BW	WW	Milk	YW
0.5	3.2	44	22	73

\$BMI	\$CEZ	\$BLL	\$CHB	Act. sc
16	15	15	20	37

BW	205R	YR
88	103	101

Marb	REA	Fat
.05	.28	-.010

- 119 IMF Ratio



Lot 59 - Pyramid 4029 Thor 054



Pyramid 4029 Thor 054

Reg. 43102671 Tattoo: 54X Calved: 04/18/10

JDH 15 Wrangler 251
THR Thor 4029
THR Miss Thor 0266

NJW 8E Monarch 111
NJF 111 Whitney 111S
GV 579 Victoria 9710

JDF 16d Wrangler 15
JDH Ms Lute 18J
CI 1 Domino 641F
THR Miss Thor 8050
Remital Embracer 8E
Svr 91C Miss Beau 539G
Anhinga Vic 69R 579
GV 2b Whitney 9533

CED	BW	WW	Milk	YW
2.8	3.3	55	24	100

\$BMI	\$CEZ	\$BLL	\$CHB	Act. sc
18	16	13	30	38.2

BW	205R	YR
92	104	111

Marb	REA	Fat
.10	.63	.000



Hereford



Lot 62 - Pyramid 408 Harland 006



Pyramid 408 Harland 006

Reg. 43102611 Tattoo: 6X Calved: 03/07/10

Hh Advance 9005J
CJH Harland 408
CJH L1 Dominette 0064

KB L1 Domino 519
Hh Ms Advance 4054D
L1 Domino 920501
CJH L1 Dominette 759
BTF 5008 Victor 0190
ALH A3 Favorite 512
Cmf 584T Frontier 634L
OXH Lola 8022

ALH 0190 Victor 0343
FHF 0343 Lola 8U
FHF 634L Lola 42S

CED	BW	WW	Milk	YW
3.3	1.3	52	28	85

\$BMI	\$CEZ	\$BLL	\$CHB	Act. sc
22	18	19	26	42.5

BW	205R	YR
77	112	111

Marb	REA	Fat
.32	.29	.080

- Recommended for heifers
- Performance standout



Lot 60 - Pyramid 104T Tank 46X



Pyramid T81 Trail Blazer 027

Reg. 43102675 Tattoo: 27X Calved: 04/03/10

KCF Bennett 3008 M326
SHF Trail Blazer M326 T81
SHF Governess 236G L64

RRH Mr Felt 3008
KCF Miss 459 F284
Remitall Governor 236G
SHF Lady Master 092 F13
GV 9823 Victor 0024
OXH Judi 7354
FHF Starbuck 162A 32F
FHF Rita 35C 23F

FHF 0024 Starbuck 51M
FHF 51M Rita 132T
FHF 32F Rita 43J

CED	BW	WW	Milk	YW
-1.5	5.2	43	26	55

\$BMI	\$CEZ	\$BLL	\$CHB	Act. sc
15	13	15	21	37.5

BW	205R	YR
94	103	92

Marb	REA	Fat
.18	.11	-.010

- Tremendous depth of rib.



Pyramid 104T Tank 46X

Reg. 43102615 Tattoo: 46X Calved: 04/12/10

NJW FHF 9710 Tank 45P
FHF 45P Starbuck 104T
FHF 32F Rita 43J

FHF 8403 Starbuck 19H
GV 579 Victoria 9710
FHF Starbuck 162A 32F
FHF Rita 35C 23F
BTF 5008 Victor 0190
ALH A3 Favorite 512
FHF 0024 Starbuck 51M
Rai Legacy 291N

ALH 0190 Victor 0343
FHF 0343 Legacy 9U
FHF 51m Legacy 85S

CED	BW	WW	Milk	YW	\$BMI	\$CEZ	\$BLL	\$CHB	Act. sc
2.1	2.6	45	26	72	10	14	6	25	36

BW	205R	YR
79	105	99

Marb	REA	Fat
.10	.56	-.030

- Recommended for heifers



Pyramid 408 Harland 001

Reg. 43102639 Tattoo: 1X Calved: 03/03/10

Hh Advance 9005J
CJH Harland 408
CJH L1 Dominette 0064

KB L1 Domino 519
Hh Ms Advance 4054D
L1 Domino 920501
CJH L1 Dominette 759
BTF 5008 Victor 0190
ALH A3 Favorite 512
BP Klondike 602 904 18I
FHF DK 0112 Rita 17M

ALH 0190 Victor 0343
FHF 0343 Rita 37U
FHF DK 18I Rita 22P

CED	BW	WW	Milk	YW	\$BMI	\$CEZ	\$BLL	\$CHB	Act. sc
2.4	2.5	50	27	82	21	17	18	30	38.1

BW	205R	YR
60	104	100

Marb	REA	Fat
.35	.44	.020

- Twin
- Recommended for heifers



Pyramid T81 Trail Blazer 021

Reg. 43102630 Tattoo: 21X Calved: 03/30/10

KCF Bennett 3008 M326
SHF Trail Blazer M326 T81
SHF Governess 236G L64

RRH Mr Felt 3008
KCF Miss 459 F284
Remitall Governor 236G
SHF Lady Master 092 F13
Cmf 103T Victor 262D
DL Mis Dom 243 584T
LLL Spade 106K
LCG Lyda Duty 157K

Cmf 584T Frontier 634L
FHF 634L Lyda 23T
LCG Lyda Franklin 143P

CED	BW	WW	Milk	YW
2.3	1.2	40	20	53

\$BMI	\$CEZ	\$BLL	\$CHB	Act. sc
22	19	21	19	38

BW	205R	YR
76	103	99

Marb	REA	Fat
.23	.10	-.040

- Recommended for heifers



Lot 61 - Pyramid 408 Harland 001

Pyramid T81 Trail Blazer 033

Reg. 43102658 Tattoo: 33X Calved: 04/06/10

KCF Bennett 3008 M326
SHF Trail Blazer M326 T81
SHF Governess 236G L64

FHF 0024 Starbuck 51M
FHF 51M Achieva 70T
FHF 19H Achieva 88K

RRH Mr Felt 3008
KCF Miss 459 F284
Remitall Governor 236G
SHF Lady Master 092 F13
GV 9823 Victor 0024
OXH Judi 7354
FHF 8403 Starbuck 19H
FHF Mystery Lady 3Y

CED	BW	WW	Milk	YW	\$BMI	\$CEZ	\$BLL	\$CHB	Act. sc
0.3	3.7	44	21	48	12	14	10	21	35.1

BW	205R	YR	Marb	REA	Fat
87	98	87	.15	.30	-.010

• Calving ease.



Lot 69 - Pyramid 4029 Thor 039

Pyramid T81 Trail Blazer 048

Reg. 43102614 Tattoo: 48X Calved: 04/13/10

KCF Bennett 3008 M326
SHF Trail Blazer M326 T81
SHF Governess 236G L64

FHF 19h Starbuck 20M
FHF 30m Nate's Lady 9T
FHF 100I Nates Lady 36R

RRH Mr Felt 3008
KCF Miss 459 F284
Remitall Governor 236G
SHF Lady Master 092 F13
FHF 8403 Starbuck 19H
FHF CI Dominette 71A
Brl Call 100L
FHF 616 Nate's Lady 84L

CED	BW	WW	Milk	YW	\$BMI	\$CEZ	\$BLL	\$CHB	Act. sc
-0.7	4.3	36	15	46	15	14	15	18	34

BW	205R	YR	Marb	REA	Fat
92	88	85	.17	.14	-.020

• Moderate framed
• Dark red, google eyed
• 124 IMF Ratio

Pyramid 4029 Thor 039

Reg. 43102612 Tattoo: 39X Calved: 04/09/10

JDH 15 Wrangler 25L
THR Thor 4029
THR Miss Thor 0266

FHF 35C Starbuck 10G
FHF 10G Vicki 9P
DPH Miss Vaquero Vicki 12M

JDF 16d Wrangler 15
JDH Ms Lute 18J
CI 1 Domino 641F
THR Miss Thor 8050
DND SC K120 Vic 59U 35C
FHF Victra 162A 22E
GHF Gemstone G3 207J
DPH MS Vaquero ST 14F

CED	BW	WW	Milk	YW	\$BMI	\$CEZ	\$BLL	\$CHB	Act. sc
2.0	2.0	45	20	85	22	18	20	22	42.2

BW	205R	YR	Marb	REA	Fat
86	92	100	.02	.42	.010

Pyramid 4029 Thor 016

Reg. 43102648 Tattoo: 16X Calved: 03/28/10

JDH 15 Wrangler 25L
THR Thor 4029
THR Miss Thor 0266

FHF 51M Starbuck 68P
FHF 51M JuDi 45S
FHF 10G Judi 15M

JDF 16d Wrangler 15
JDH Ms Lute 18J
CI 1 Domino 641F
THR Miss Thor 8050
FHF 0024 Starbuck 51M
FHF 19H Victra 63K
FHF 35C Starbuck 10G
FHF 616 Judi 50K

CED	BW	WW	Milk	YW	\$BMI	\$CEZ	\$BLL	\$CHB	Act. sc
0.7	3.1	49	22	87	16	14	13	24	37.3

BW	205R	YR	Marb	REA	Fat
92	95	100	.07	.47	.020

Pyramid 4029 Thor 026

Reg. 43102673 Tattoo: 26X Calved: 04/03/10

JDH 15 Wrangler 25L
THR Thor 4029
THR Miss Thor 0266

Victor Boomer P606
FHF P606 Whitney 113S
GV 579 Victoria 9710

JDF 16d Wrangler 15
JDH Ms Lute 18J
CI 1 Domino 641F
THR Miss Thor 8050
Remitall Boomer 46B
PW Victoria 964 8114
Anhinga Vic 69R 579
GV 2B Whitney 9533

CED	BW	WW	Milk	YW	\$BMI	\$CEZ	\$BLL	\$CHB	Act. sc
1.2	2.7	47	22	84	19	16	17	24	39

BW	205R	YR	Marb	REA	Fat
88	103	92	.12	.59	.020

• 120 REA Ratio

Pyramid 4029 Thor 0180 ET

Reg. 43222346 Tattoo: 26X Calved: 04/03/10

JDH 15 Wrangler 25L
THR Thor 4029
THR Miss Thor 0266

FHF Starbuck 162A 32F
FHF 32F Rita 43J
FHF Rita 35C 23F

JDF 16D Wrangler 15
JDH Ms Lute 18J
CL 1 Domino 641F
THR Miss Thor 8050
DL Victor 85X 162A
FHF Mystery Lady 27U
DND SC K120 Vic 59U 35C
FHF Rita 8702 53C

CED	BW	WW	Milk	YW	\$BMI	\$CEZ	\$BLL	\$CHB	Act. sc
0.2	4.1	53	23	98	17	14	14	28	36.5

BW	205R	YR	Marb	REA	Fat
88	ET	ET	.12	.60	.000

• Dehorned

Pyramid 4029 Thor 007

Reg. 43102605 Tattoo: 007 Calved: 3/13/10

JDH 15 Wrangler 25L
THR Thor 4029
THR Miss Thor 0266

Beartooth Butler 614R
FHF 614R NaTes Lady 3M
FHF 10G Nate's Lady 90K

JDF 16d Wrangler 15
JDH Ms Lute 18J
CI 1 Domino 641F
THR Miss Thor 8050
Bt Butler 452M
Antonio Mis J3 270F
FHF 35C Starbuck 10G
FHF 680 Nate's Lady 34G

CED	BW	WW	Milk	YW	\$BMI	\$CEZ	\$BLL	\$CHB	Act. sc
3.9	.7	43	19	79	20	18	16	25	36.5

BW	205R	YR	Marb	REA	Fat
84	93	94	.18	.40	-.010

• Recommended for heifers

Hereford

Like Father Like Son



Dakota Gold and son.



GAR Game On and son.



Connealy Thunder and son.



THR Thor 4029 and son.



S A V Pyramid 8186 and son.



Hereford

Thank You

For your interest
in Pyramid Beef

Notes _____

Sale Terms and Conditions:

Bidding: All cattle or genetic material (embryos, semen or any DNA material) offered for sale will be sold to the highest bidder. The person in charge of the sale (seller, auctioneer, or sale manager whether live public auction or internet auction) will settle any disputes with regards to bids, and his/her decision will be final.

Announcements: Corrections or additions of any information in the sale catalog will be announced from the auction stand or on the internet site (in the case of internet auctions) prior to the selling of the animal or genetic material, and such announcements will take precedence over any printed material.

Payment Terms: All sales are for immediate cash settlement unless other credit arrangements have been established between buyer and seller prior to the sale.

Buyer's Risk: The animal or genetic material becomes the property and risk of the buyer as soon as sold but it shall be the responsibility of the seller to see that animals are properly cared for, free of charge to purchaser, until delivered to buyer or until the expiration of 24 hours after the sale, which ever comes first.

Identification: It is the obligation of the seller to make sure that each animal sold has a readable tattoo corresponding to its registration paper. Buyers have a responsibility to recheck the tattoos after taking possession and reporting any discrepancies to the seller immediately. In the case that an animal is marketed under a nickname, the nickname must also be accompanied by the official registered name and registration number.

Rights to Genetic Material: Rights to genetic material for purposes of cloning an animal shall be transferred to the buyer with a legal bill of sale unless otherwise specified by the seller in the terms and conditions and/or the bill of sale.

Hereford



19558 Anchor RD
St. Onge, SD 57779
www.Pyramidbeef.com



Females are the
Foundation
of our **Program**

