



**April 1, 2011 • 1 p.m.  
Selling 74 Bulls and 14 Females**

Also selling 40 Commercial Females  
**Haviland, Kan.**

Visit [www.sandhillfarms.com](http://www.sandhillfarms.com)  
or call 620-995-4072 for  
updated information and  
videos of sale cattle.

**Sandhill  
Farms**





South American Tour



Courtney, Ron, Arnita, Todd, Brooke, Vera, Kevin and Tyler



Brooke engaged to Travis Warner





Kevin and Vera Schultz  
 Haviland, KS 67059  
 620-995-4072 • Cell 620-546-4570  
 Ron and Arnita Schultz • 620-348-4863  
 www.sandhillfarms.com

Hello Cattlemen,

As I visit with many cattlemen across the country, both those that use our bulls and those that haven't yet, I learn something new with each conversation. Everyone's program is different and each has a specific purpose for their bull needs. Some need calving ease, some need carcass and on down the line. It is my goal to have a breeding program that is balanced in all the traits. This way, we can assist each breeder. Within this set of bulls, there are differences and it is up to you and I to find the best "fit" for you. So, please look the catalog over and give me a call. We can find the "fit" for you.

This past year, we were honored with the Beef Improvement Federation Seedstock Producer of the Year award. Putting this in perspective, it would be similar to pitching a perfect game in the World Series. It is a great honor, but the greatest honor is your past and present support of our sales and breeding program.

For those that read this, this will sound redundant, but this is the best set of bulls we have ever offered. I measure this not by the top end, but the bottom end. They still average in the top 1% of the breed for BMI\$ and CHB\$ Indexes and they are more consistent from end to end.

We are donating a lot in the sale for the Kansas State University Foundation for the building fund of the Livestock Marketing and Learning Center in memory of Stanley Stout. This lot will be Lot 36, the halfway point of the bull sale.

The cows in the sale will mostly calve by sale day. These cows are all the 5-year-old cows with heifer calves. I will give the info about the how and why later in the catalog introducing the cows.

The heifers selling are all open commercial females. These Hereford heifers are from the commercial herd here at Sandhill Farms. They have been vaccinated and ready to breed. This year, like last, we are offering a conference call number. It is a toll free call that up to 125 people can listen in and/or bid. Please call ahead and get a bidder number. More information is on the next page.

Give us a call and we will assist you in selecting cattle that will help fit your program best.

Sincerely,  
 Kevin

**Average EPDs of Sale Bulls and National Rank**

CE	BW	WW	YW	MM	MCE	SC	FAT	REA	MARB	BMI\$	CEZ\$	BI\$	CHB\$
2.7	2.4	52	79	19	2.0	1.1	0.00	0.31	0.22	23	17	21	28
15%	20%	15%	25%	30%	20%	10%	50%	25%	5%	1%	15%	1%	1%

**Repeat Buyer Credit Policy**

We are offering a "repeat buyer credit policy". If you purchased an animal from us in the previous year, you will receive 5% off your total purchase in this year's sale. This policy will be ongoing and will apply to next year's sale. The 5% discount is determined after all credits have been subtracted from the gross purchase price.



# Sandhill Farms Production Sale

Friday, April 1, 2011 • At the Ranch • 1 p.m. (CST)

2048 280th Ave. • Haviland, KS 67059

Kevin and Vera Schultz 620-995-4072 • Kevin cell 620-546-4570 • Vera cell 620-546-3982

Ron and Arnita Schultz 620-348-4863

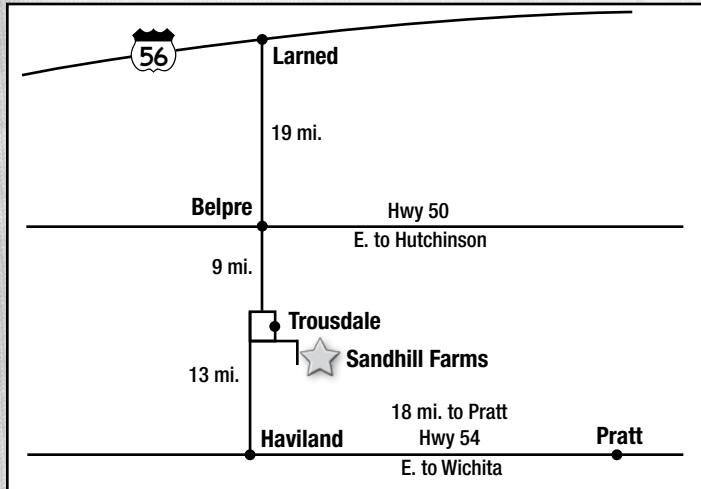
[www.sandhillfarms.com](http://www.sandhillfarms.com) • [kevin@sandhillfarms.com](mailto:kevin@sandhillfarms.com)

**Sale Day Phone toll free 866-502-8312 Passcode 733153**

**Cattle will sell in lot order.**

**Please call our home number for bidder # prior to sale day.**

**Located near Trousdale. See map.**



**Inspection of cattle:** The cattle will be available for inspection any time prior to sale at Sandhill Farms.

Soup supper will be Thursday night. A complimentary lunch will be available on sale day along with donuts and coffee on Friday morning.

**Note:** Sandhill Farms reserves the right to a 1/4 semen interest on all sale bulls. On several bulls we will retain an additional 1/4 semen interest. These bulls will be marked.

## Terms and Conditions

**Delivery:** Free delivery on bulls and cows within the U.S. \$75 off per bull you haul. No delivery on the heifers.

**Guarantee:** We guarantee that all breeding cattle, both females and bulls, are fertile to the best of our knowledge. If they are injured any time in the 12 months after they are purchased so as to make them functionally infertile, we will provide you with a satisfactory replacement, if available, or issue you credit equal to your purchase minus salvage value.

**Sight Unseen Guarantee:** Just like when we sold bulls private treaty, we will guarantee your satisfaction of the bulls we purchase for you. If you don't feel like the bull was represented accurately after he has been at your place, let us know and all you will pay is the trucking. We will take the bull back. You must talk to us at Sandhill Farms so we can help match you up with the best bulls for you prior to the sale.

**Health:** All bulls have been fertility tested by Dr. Mike Burdett of Larned Veterinary Clinic and passed. They were also vaccinated with Staybred VL5 and poured with ivermectin. All cattle have been tested negative for PI BVD. At weaning, the bulls and heifers were vaccinated and boosted with Bovishield Gold 5,

## Special Guests

Levi Landers, *Hereford World* ----- 308-730-1396  
 Justin Stout, *Stock Exchange*----- 913-645-5136  
 Rod Swafford, *High Plains Journal* ----- 620-338-7244  
 Mark and Jill Hotchkiss, *Hereford America*----- 605-490-1513  
 Joel Birdwell, *Oklahoma Cowman*----- 405-368-1058  
 Art Handel, Handel Marketing Services----- 605-391-8233  
 Dustin Layton----- 405-464-2455  
 Don Birk Enterprises ----- 417-860-8595  
 Auctioneer, Jim Birdwell, Fletcher, Okla.----- 580-695-2352

## Special Comments

Art Handel, Handel Marketing Services, Marc Hotchkiss and Levi Landers with the American Hereford Association have seen all the cattle. They can take phone bids or advise about the cattle. Inclement weather: check our Web site [www.sandhillfarms.com](http://www.sandhillfarms.com) for weather postponements.

## Accommodations

*Pratt, 30 miles southeast from Sandhill Farms*  
 Days Inn ----- 620-672-9465  
 Super 8 ----- 620-672-5945  
*Larned, 30 miles north of Sandhill Farms*  
 Best Western ----- 620-285-3114  
 Rodeway Inn----- 620-285-2300

## Air Travel

Wichita is located 100 miles east of Sandhill Farms and is served by major airline carriers. Dodge City is located 60 miles west of Sandhill Farms and is a regional airport.

**Preresponse SQ and Vision 7.** The heifers were vaccinated with Bovishield Gold FP 5 VL5 and poured with ivermectin. Herd health is excellent. Individual health papers will be provided for shipment anywhere.

**Bull Development:** The bulls were creep fed on grass in late summer. After weaning, they have been grazing on wheat or annual rye pasture when available. Silage and 8 lb. of grain have also been fed.

**Announcements:** Check our Web site for updated information at [www.sandhillfarms.com](http://www.sandhillfarms.com).

**Liability:** Any person attending the sale does so at his own risk. The sale management, owners nor any person connected with this sale do not assume any liability, legal or otherwise.

**Registrations/Transfers:** Registration certificates will be transferred to the buyer upon request at the seller's expense. When making settlement, buyers must give complete written name and address.

**Insurance:** Insurance will be available sale day for those wishing to purchase it. Please tell the clerk when settling up. Sheila Jensen, Livestock Insurance Agent 785-374-4372.



# Glossary of Performance Terms

We are going to give you all the data we can gather and let you decide which bulls will fit in your program the best.

- **Expected Progeny Difference (EPD)** — The prediction of how future progeny of each animal are expected to perform relative to the progeny of other animals listed from the same database. EPDs are expressed in units of measure for the trait, plus or minus. EPDs are not to be compared between breeds.
- **ACC** — Accuracy is the reliability that can be placed on the EPD. An accuracy of close to 1.0 indicates higher reliability.
- **Birth wt.** — The actual weight in pounds at birth.
- **CE** — Calving-Ease Score: 1= unassisted; 2= some assistance; 3=mechanical assistance.
- **Adj. WW** — Weaning weight adjusted to 205-days of age and adjusted for age of dam.
- **Adj. YW** — Yearling weight adjusted to 365-days of age and adjusted for age of dam.
- **Weight Ratio** — A direct comparison of one calf to all other calves in his contemporary group. 105 means that the calf performed 5% above group average for that trait and a 95 ratio indicates that the calf is 5% below group average for that trait.
- **Contemporary Group** — A group of cattle about the same age and given equal treatment.

## Growth EPDs

- **Birth Wt. EPD (BW)** — Birth weight of animal's progeny expected difference as compared to other animals from the same breed or database.
- **Weaning Wt. EPD (WW)** — Weaning weight of animal's progeny expected difference as compared to other animals from the same breed or database.
- **Yearling Wt. EPD (YW)** — Yearling weight of animal's progeny expected difference as compared to other animals from the same breed or database.
- **Scrotal Circumference (SC)** — Expressed in centimeters, this is a predictor of the difference in transmitting scrotal size compared to other animals from the same breed or database.

## Maternal EPDs

- **Maternal Milk (MM)** — A predictor of a sire's genetic merit for milk and mothering ability as expressed in his daughters compared to daughters of other sires.
- **Milk & Growth (M&G)** — A predictor of a sire's daughters for milk and growth. In other words, it is that part of a calf's weaning weight attributed to milk and genetics for growth.

## Carcass EPDs

- **Back Fat (Fat)** — A predictor of the difference in external fat thickness at the 12th rib.
- **Rib Eye Area (REA)** — A predictor of the difference in ribeye area.
- **Marbling (MARB)** — A predictor of the difference in intramuscular fat.

## Breed Indexes

- **Baldy Maternal Index (BMI)** — Combination of weighted traits that affect the bottom line when mating the Hereford bull on black cows.
- **Calving Ease Index (CEI)** — Animal's potential for use on heifers.
- **Brahman Influence Index (BII)** — Similar to BMI index, but weighted heavier for traits that will make Brahman cattle more profitable.
- **Certified Hereford Beef Index (CHB)** — Animal's ability to perform in the feedlot and on the rail.

## Ultrasound Adjusted Measurements

- **Adj. % MARB** — The percent intramuscular fat (marbling) adjusted to 365-days of age. Heritability for marbling is in the moderate range. The intramuscular fat in longissimus muscle of ribbed carcasses is the principal determinant of USDA quality grade in cattle slaughtered at less than 30-months of age. Heifers and steers in the 4% range of MARB will be close to making the Choice grade. Bulls if they were steers with a 3% MARB will also be close to the Choice grade. The difference is the influence of testosterone in the bulls' system.
- **Adj. REA** — Each bull's ribeye area measured in square inches and adjusted to one year of age. REA is used in the calculation of yield grade.
- **Adj. Backfat** — This is the backfat measured in inches adjusted to 365-days of age. The BF thickness is directly related to the carcass yield grade.
- **Rib Eye/ cwt.** — This is the adjusted REA divided by the hundred weight of the bull. The weight of the animal, which is affected by fill, body condition and others, can change this ratio greatly.

## Dam's and/or Progeny Production Records

- **Birth Weight Ratio (BWR)** — The number of calves a dam has had and their average birth wt. ratio. Example: 2-98 means the dam has had 2 calves with an average BWR of 98.
- **Weaning Weight Ratio (WWR)** — The number of calves a dam has had and their average weaning weight ratio. Example: 2-102 means the dam has had 2 calves with an average WWR of 102.
- **Yearling Weight Ratio (YWR)** — The number of calves a dam has had and their average yearling weight ratio. Example: 2-103 means the dam has had 2 calves with an average YWR of 103.
- **Marbling Ratio (MARBR)** — The number of calves a dam has had and their average wt. ratio. Example: 2-98 means the dam has had 2 calves with an average MARB of 98.
- **Rib Eye Ratio (REAR)** — The number of calves a dam has had and their average ratio. Example: 2-102 means the dam has had 2 calves with an average REA of 102.
- **Fat Ratio (FATR)** — The number of calves a dam has had and their average ratio. Example: 2-103 means the dam has had 2 calves with an average FAT of 103.
- **DOB: Date of birth**
- **H/P/S/D:** — Horned/Polled/Scurred/Dehorne

FOX		BULL LOT							
		DOB: ###/###/##	#####	H/P/S/D: H					
Selling: Full possession.									
<b>BMI\$</b> 00		SHF RADAR M326 R125 P42584018			KCF BENNETT 3008 M326				
<b>CEZ\$</b> 00					SHF POSTIVE MISS 73C M15				
<b>BIIS</b> 00					MM RSM STOCKMASTER 512				
<b>CHBS</b> 00		SHF GOVERNESS 236G L37 P42176503			SHF INTERSTATE D03 G80				
<b>BW</b> 0.0	<b>WW</b> 00	<b>YW</b> 00	<b>MM</b> 00	<b>M&amp;G</b> 00	<b>SC</b> 0.0	<b>FAT</b> 0.00	<b>REA</b> 0.00	<b>MARB</b> 0.00	
<b>CE Score</b> 0.0	<b>Act. BW</b> 00	<b>BW Ratio</b> 00	<b>Adj. WW</b> 0	<b>WW Ratio</b> 00	<b>Adj. YW</b> 00	<b>YW Ratio</b> 0.00	<b>Frame Score</b> 0.00		
<b>Adj. BF Ratio</b>	<b>Adj. REA Ratio</b>	<b>REA/ cwt</b>	<b>Adj. MARB Ratio</b>	<b>MARB Ratio</b>	<b>Adj. SC (CM)</b>	<b>Age of Dam</b>	<b>Dam's Production</b>	<b>BWR</b>	<b>WWR</b> <b>YWR</b>
00-000	00.00-000	0.00-000	00	00	00	00	0-000	0-000	0-000

FOX		FEMALE LOT							
		DOB: ###/###/##	#####	H/P/S/D: H					
Selling: Full possession.									
<b>BMI\$</b> 00		SHF RIB EYE M326 R117 P42584003			KCF BENNETT 3008 M326				
<b>CEZ\$</b> 00					HVH MISS HUDSON 83K M8				
<b>BIIS</b> 00					SHF INTERSTATE 20X D03				
<b>CHBS</b> 00		SHF INTERSTATE D03 N74 P42377662			SHF STOCKLADY 417 G88				
<b>BW</b> 0.0	<b>WW</b> 00	<b>YW</b> 00	<b>MM</b> 00	<b>M&amp;G</b> 00	<b>SC</b> 0.0	<b>FAT</b> 0.00	<b>REA</b> 0.00	<b>MARB</b> 0.00	
PROGENY PRODUCTION									
<b>BW Ratio</b>	<b>WW Ratio</b>	<b>YW Ratio</b>	<b>MARB Ratio</b>	<b>REA Ratio</b>	<b>FAT Ratio</b>				
00-00	00-00	00-00	00-00	00-00	00-00				

Take time to drive through our cow herd while you are here for the sale.

Vehicles will be provided.





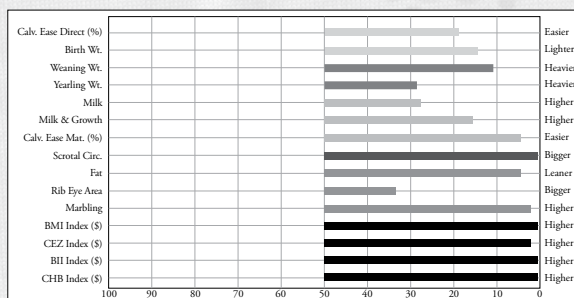
# REFERENCE SIRES



**SHF RIB EYE M326 R117**

<b>REF A</b>	<b>SHF RIB EYE M326 R117</b> {CHB}{DLF}{IEF}{HYF}							
	Calved: March 23, 2005	P42584003 H/P/S/D: P						
<b>BMI\$</b> 31	RRH MR FELT 3008 {SOD,CHB}{DLF}{IEF}{HYF}							
<b>CEZ\$</b> 20	KCF BENNETT 3008 M326 {CHB}{IEF,DLF,HYF}	KCF MISS 459 F284						
<b>BIIS</b> 28	MSU MF HUDSON 19H {SOD,CHB}{HYF}							
<b>CHB\$</b> 32	HVH MISS HUDSON 83K 8M	SUN VINDY MISS 83K						
	P42247970							
<b>BW</b>	<b>WW</b>	<b>YW</b>	<b>MM</b>	<b>M&amp;G</b>	<b>SC</b>	<b>FAT</b>	<b>REA</b>	<b>MARB</b>
87	630	1148	21	48	1.7	0.31	11.7	0.28
<b>CE Score</b>	<b>Act. BW</b>	<b>BW Ratio</b>	<b>Adj. WW</b>	<b>WW Ratio</b>	<b>Adj. YW</b>	<b>YW Ratio</b>	<b>Adj. YH (IN)</b>	
1	87	93	734	107	1306	110	53.2	

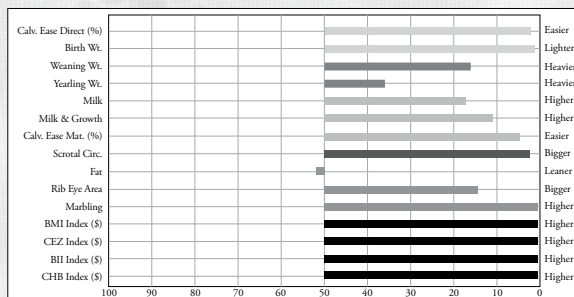
- Rib Eye is a breed trait leader in nine different areas. A proven calving ease sire yet has top growth, balanced carcass merit and daughters that are making very good cows. He is a sire with greater than 90% accuracy on his BW EPD and one of the leading semen selling sires in the ABS Hereford lineup.
- Selling 21 sons and many grandsons
- Semen from ABS



**SHF VISION R117 U38**

<b>REF B</b>	<b>SHF VISION R117 U38</b> {IEF,DLF}							
	Calved: Feb. 7, 2008	P42894861 H/P/S/D: P						
<b>BMI\$</b> 28	KCF BENNETT 3008 M326 {CHB}{IEF,HYF,DLF}							
<b>CEZ\$</b> 21	SHF RIB EYE M326 R117 {CHB}{DLF,HYF,IEF}	HVH MISS HUDSON 83K 8M						
<b>BIIS</b> 24	SHF PROGRESS P20 {CHB}{IEF,HYF,DLF}							
<b>CHB\$</b> 32	SHF MISS PROGRESS S03 ET	SHF GOVERNESS 236G K42 {DOD}						
	P42693475							
<b>BW</b>	<b>WW</b>	<b>YW</b>	<b>MM</b>	<b>M&amp;G</b>	<b>SC</b>	<b>FAT</b>	<b>REA</b>	<b>MARB</b>
78	686	1198	23	49	1.3	0.25	13.4	0.34
<b>CE Score</b>	<b>Act. BW</b>	<b>BW Ratio</b>	<b>Adj. WW</b>	<b>WW Ratio</b>	<b>Adj. YW</b>	<b>YW Ratio</b>	<b>Adj. YH (IN)</b>	
1	78	91	729	110	1277	109	50	

- Vision is just as his name implies, a vision of what bulls we have to offer. He is a sire we have used on both heifers and cows with great success. He is adding carcass merit and I fully expect the females to be a lasting part of his breeding potential.
- Selling 15 sons
- Semen from Sandhill Farms and Rausch Herefords, S.D.





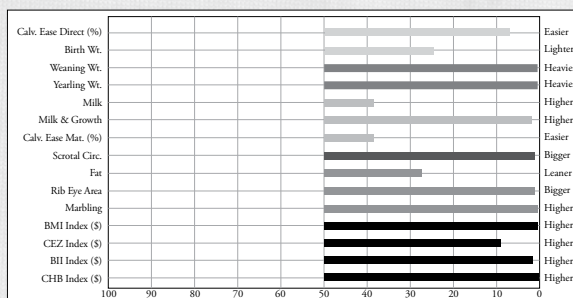
# REFERENCE SIRES

<b>REF C</b>	<b>PCR 286 MR ADVISOR 502R</b> {DLF,IEF,HYF}								
	Calved: Feb. 9, 2005			P42620083			H/P/S/D: P		
	<b>BMI\$</b> 29			RRR MR FELT 3008 {SOD,CHB}{IEF,HYF,DLF}					
<b>CEZ\$</b> 18			HUTH FULL HOUSE N003 P42409445			K HUTH ENHANTRESS K001			
<b>BIIS</b> 23			PCR JACKLYN NIKOLE 344N {IEF,DLF}			PCR JACK PHROST 18K			
<b>CHB\$</b> 43			PCR JACKLYN NIKOLE 344N {IEF,DLF}			PCR VICKI NICOLE 642F			
<b>BW</b>	<b>WW</b>	<b>YW</b>	<b>MM</b>	<b>M&amp;G</b>	<b>SC</b>	<b>FAT</b>	<b>REA</b>	<b>MARB</b>	
80	790	1350	19	54	1.4	0.28	14.2	0.38	
<b>CE Score</b>	<b>Act. BW</b>	<b>BW Ratio</b>	<b>Adj. WW</b>	<b>WW Ratio</b>	<b>Adj. YW</b>	<b>YW Ratio</b>	<b>Adj. YH (IN)</b>		
1	80	96	792	113	1352	108			



**PCR 286 MR ADVISOR 502R**

- Advisor is a proven trait leader in 12 different area for the breed. We have used Advisor to help us achieve our goals, but with a different pedigree. His progeny have been good at BW and ratioed above average for growth and added carcass value.
- Selling seven sons
- Semen from Sandhill Farms

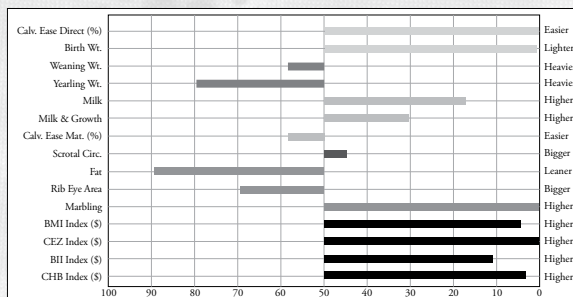


<b>REF D</b>	<b>SHF PROGRESS P20</b> {CHB}{DLF,HYF,IEF}								
	Calved: Feb. 9, 2004			P42481042			H/P/S/D: P		
	<b>BMI\$</b> 22			FELTONS DOMINO 774 {SOD,CHB}{DLF,HYF,IEF}					
<b>CEZ\$</b> 23			FELTONS LEGEND 242 {SOD,CHB}{HYF}			FELTONS G15			
<b>BIIS</b> 18			SHF INTRSTATE D03 G06 ET P24016248			SHF INTERSTATE 20X D03 {SOD,CHB}			
<b>CHB\$</b> 27			SHF INTRSTATE D03 G06 ET P24016248			MM CISCO LADY 203 {DOD}			
<b>BW</b>	<b>WW</b>	<b>YW</b>	<b>MM</b>	<b>M&amp;G</b>	<b>SC</b>	<b>FAT</b>	<b>REA</b>	<b>MARB</b>	
89	750	1218	23	44	0.6	0.23	11.6	0.39	
<b>CE Score</b>	<b>Act. BW</b>	<b>BW Ratio</b>	<b>Adj. WW</b>	<b>WW Ratio</b>	<b>Adj. YW</b>	<b>YW Ratio</b>	<b>Adj. YH (IN)</b>		
1	89	NA	728	NA	1199	NA	52.2		



**SHF PROGRESS P20**

- Progress is a superior calving ease bull breeding leading marbling and milk. Although breed average for growth, we just keep using Progress as he is superior in calving ease, fleshing ability and daughters.
- Selling five sons and many grandsons
- Semen from ABS





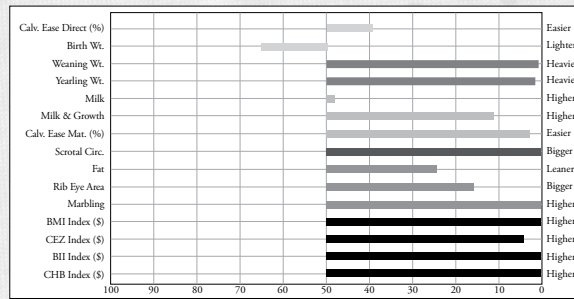
# SANDHILL FARMS BULLS



**KCF BENNETT 3008 M326**

REF E	<b>KCF BENNETT 3008 M326</b> {CHB}{IEF,HYF,DLF}							
	Calved: Sept. 24, 2002    P42361822    H/P/S/D: P							
<b>BMI\$</b> 35 <b>CEZ\$</b> 19 <b>BIIS</b> 32 <b>CHB\$</b> 36	RRH MR FELT 3008 {SOD,CHB}{HYF,DLF,IEF} P23703420  FELTONS 517 {SOD,CHB}{HYF} RRH MS VICT 6191  KCF MISS 459 F284 P23938259  FELTONS 459 KCF MISS X4 B156							
<b>BW</b> 74	<b>WW</b> 705	<b>YW</b> 1230	<b>MM</b> 18	<b>M&amp;G</b> 49	<b>SC</b> 2.1	<b>FAT</b> 0.26	<b>REA</b> 12.2	<b>MARB</b> 0.36
<b>CE Score</b> 1	<b>Act. BW</b> 74	<b>BW Ratio</b> 93	<b>Adj. WW</b> 611	<b>WW Ratio</b> 108	<b>Adj. YW</b> 1171	<b>YW Ratio</b> 110	<b>Adj. YH (IN)</b> 50.2	

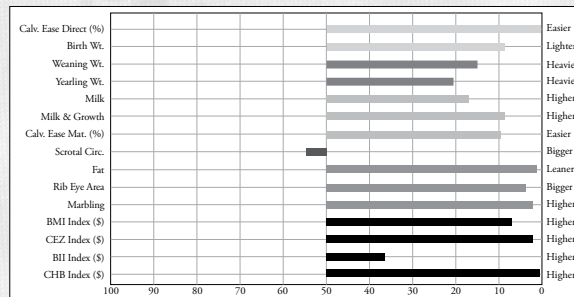
- M326 is the bull that started the performance and carcass movement in the Hereford breed. He is a trait leader in 12 different areas for the breed. He sires moderate framed cattle with volume and muscle.
- Selling many grandsons of M326 from both the paternal and maternal side of the pedigree. We have been linebreeding M326 with success.
- Semen from Sandhill Farms



**THM DURANGO 4037**

REF F	<b>THM DURANGO 4037</b> {CHB}{DLF,IEF,HYF}							
	Calved: Dec. 6, 2003    P42460503    H/P/S/D: P							
<b>BMI\$</b> 21 <b>CEZ\$</b> 20 <b>BIIS</b> 15 <b>CHB\$</b> 34	CS BOOMER 29F {SOD,CHB}{IEF,HYF,DLF} P23925982  REMITALL BOOMER 46B {SOD,CHB}{IEF,HYF,DLF} CS MISS 1ST FLAG 21A {DOD}{DLF,IEF}  THM 7085 VICTRA 9036 {IEF,DLF,HYF} P41121097  THM VICTOR DOM 7085 THM VICTRA 5404 7073							
<b>BW</b> 80	<b>WW</b> 680	<b>YW</b> 1345	<b>MM</b> 23	<b>M&amp;G</b> 50	<b>SC</b> 0.5	<b>FAT</b> 0.33	<b>REA</b> 15.6	<b>MARB</b> 0.28
<b>CE Score</b> 1	<b>Act. BW</b> 80	<b>BW Ratio</b> 98	<b>Adj. WW</b> 809	<b>WW Ratio</b> 113	<b>Adj. YW</b> 1225	<b>YW Ratio</b> 108	<b>Adj. YH (IN)</b> 108	

- Durango is a sire we brought in to offer some new genetics and not sacrifice any trait. It worked. He has added volume and performance. I really like the soggy, beefy appearance we get when using this bull.
- Selling four sons





# SANDHILL FARMS BULLS

<b>Lot 1</b>	<b>SHF KENNEDY 502R X36</b>									
	Calved: Feb. 8, 2010		P43078257			H/P/S/D: P				
Selling: Full possession and 1/2 semen interest.										
<b>BMI\$ 28 CEZ\$ 19 BI\$ 24 CHB\$ 37</b>	PCR 286 MR ADVISOR 502R (IEF,HYF,DLF) P42620083					HUTH FULL HOUSE N003 PCR JACKLYN NIKOLE 344N (IEF,DLF)				
	SHF LADY M326 U33 ET P42894850					KCF BENNETT 3008 M326 (CHB)(IEF,HYF,DLF) SHF GOVERNESS 236G L37				
	<b>BW</b>	<b>WW</b>	<b>YW</b>	<b>MM</b>	<b>M&amp;G</b>	<b>SC</b>	<b>FAT</b>	<b>REA</b>	<b>MARB</b>	
1.8	62	98	18	49	1.4	-0.01	0.51	0.30		
<b>CE Score</b>	<b>Act. BW</b>	<b>BW Ratio</b>	<b>Adj. WW</b>	<b>WW Ratio</b>	<b>Adj. YW</b>	<b>YW Ratio</b>	<b>Frame Score</b>			
1	77	90	735	108	1189	105	5.7			
<b>Adj. BF Ratio</b>	<b>Adj. REA Ratio</b>	<b>REA/cwt</b>	<b>Adj. MARB Ratio</b>	<b>MARB Ratio</b>	<b>Adj. SC (CM)</b>	<b>Age of Dam</b>	<b>BWR</b>	<b>Dam's Production WWR</b>		<b>YWR</b>
0.18-88	13.96-108	1.26	3.5	97	40.9	2	1-90	1-108		1-105



**Lot 1 —  
SHF Kennedy 502R X36**

SHF Governess 236G L37 — Maternal grandam of Lot 1



- Kennedy has a wonderful opportunity to be a breed leader. Check out the low BW and good growth ratios of 108 and 105. Several people have asked why we didn't take him to Denver. The answer is, we wanted to leave him in the large contemporary group to measure how good this bull really is. The dam, U33, is a good uddered full sister to our herd sire Wonder that topped our sale last year at \$28,000. This bull ranks in the top 1% of the breed for CHB\$, BMI\$ and BI\$ indexes.

<b>Lot 2</b>	<b>SHF EXCLUSIVE 4037 X43</b>									
	Calved: Feb. 9, 2010		P43089246			H/P/S/D: P				
Selling: Full possession and 1/2 semen interest.										
<b>BMI\$ 17 CEZ\$ 17 BI\$ 13 CHB\$ 30</b>	THM DURANGO 4037 (CHB)(IEF,DLF,HYF) P42460503					CS BOOMER 29F (SOD,CHB)(DLF,HYF,IEF) THM 7085 VICTRA 9036 (IEF,HYF,DLF)				
	SHF MISS 105A M01 P42293133					RF TARGET 105A SHF SLINGER G91 K62 (DOD)				
	<b>BW</b>	<b>WW</b>	<b>YW</b>	<b>MM</b>	<b>M&amp;G</b>	<b>SC</b>	<b>FAT</b>	<b>REA</b>	<b>MARB</b>	
2.1	54	85	18	45	0.4	-0.01	0.58	0.14		
<b>CE Score</b>	<b>Act. BW</b>	<b>BW Ratio</b>	<b>Adj. WW</b>	<b>WW Ratio</b>	<b>Adj. YW</b>	<b>YW Ratio</b>	<b>Frame Score</b>			
1	94	99	704	104	1228	97	6.5			
<b>Adj. BF Ratio</b>	<b>Adj. REA Ratio</b>	<b>REA/cwt</b>	<b>Adj. MARB Ratio</b>	<b>MARB Ratio</b>	<b>Adj. SC (CM)</b>	<b>Age of Dam</b>	<b>BWR</b>	<b>Dam's Production WWR</b>		<b>YWR</b>
0.26-86	14.18-106	1.16	3.79	101	36.0	8	7-101	7-100		4-100



**Lot 2 — SHF Exclusive 4037 X43**

- This Durango son is a natural son of our donor dam M01. We have flushed her in the past and have now flushed her daughter. The udder quality in this cow family is great and consistent. Adding to the maternal qualities, this bull, Exclusive, has a 14+ in. REA and an above average MARB. Kind of a combination bull don't you think?

<b>Lot 3</b>	<b>SHF KEEPER 4037 X127</b>									
	Calved: Feb. 17, 2010		P43089243			H/P/S/D: P				
Selling: Full possession and 1/2 semen interest.										
<b>BMI\$ 19 CEZ\$ 17 BI\$ 15 CHB\$ 30</b>	THM DURANGO 4037 (CHB)(IEF,HYF,DLF) P42460503					CS BOOMER 29F (SOD,CHB)(IEF,HYF,DLF) THM 7085 VICTRA 9036 (DLF,HYF,IEF)				
	SHF QUEEN M33 T96 P42795917					SHF MARSHAL 236G M33 (SOD,CHB) HVH MISS HUDSON 83K 8M				
	<b>BW</b>	<b>WW</b>	<b>YW</b>	<b>MM</b>	<b>M&amp;G</b>	<b>SC</b>	<b>FAT</b>	<b>REA</b>	<b>MARB</b>	
2.6	56	93	26	54	0.9	-0.01	0.35	0.15		
<b>CE Score</b>	<b>Act. BW</b>	<b>BW Ratio</b>	<b>Adj. WW</b>	<b>WW Ratio</b>	<b>Adj. YW</b>	<b>YW Ratio</b>	<b>Frame Score</b>			
1	92	102	768	113	1294	102	6.6			
<b>Adj. BF Ratio</b>	<b>Adj. REA Ratio</b>	<b>REA/cwt</b>	<b>Adj. MARB Ratio</b>	<b>MARB Ratio</b>	<b>Adj. SC (CM)</b>	<b>Age of Dam</b>	<b>BWR</b>	<b>Dam's Production WWR</b>		<b>YWR</b>
0.35-114	12.4-93	1.02	3.07	81	36.8	2	2-92	2-112		2-102



**Lot 3 — SHF Keeper 4037 X127**

- Keeper was the lead bull in our Denver pen. A nice spread bull with a 2.6 BW and 93 YW. These Durango sons are consistently deep, soggy cattle. X127 has a 30 CHB\$ value ranking him in the top 1% of the breed. On the bottom side, he is out of a Marshall daughter who is out of Rib Eye's dam.



# SANDHILL FARMS BULLS



Lot 4 — SHF Exalt U15 X23

<b>04</b>		<b>SHF EXALT U15 X23</b>	
Calved: Feb. 8, 2010		P43088505	H/P/S/D: P
Selling: Full possession and 1/2 semen interest.			
<b>BMI\$</b> 19	HHF ULYSSES P68 U15 ET P42945343	SHF PHOENIX M33 P68 (CHB)	
<b>CEZ\$</b> 12		SHF GOVERNESS 236G M50	
<b>BI\$</b> 16		SHF RADAR M326 R125 (CHB){IEF,DLF,HYF}	
<b>CHB\$</b> 30	SHF RADAR R125 T41 P42795841	SHF BOOMER P606 R01 ET	
<b>BW</b> 4.0	<b>WW</b> 62	<b>YW</b> 94	<b>MM</b> 26
<b>M&amp;G</b> 57	<b>SC</b> 1.0	<b>FAT</b> 0.02	<b>REA</b> 0.49
<b>MARB</b> 0.18			
<b>CE Score</b> 1	<b>Act. BW</b> 88	<b>BW Ratio</b> 98	<b>Adj. WW</b> 830
<b>WW Ratio</b> 122	<b>Adj. YW</b> 1300	<b>YW Ratio</b> 103	<b>Frame Score</b> 7.0
<b>Adj. BF Ratio</b> 0.27-89	<b>Adj. REA Ratio</b> 13.46-101	<b>REA/cwt</b> 1.07	<b>Adj. MARB</b> 4.51
<b>MARB Ratio</b> 120	<b>Adj. SC (CM)</b> 37.0	<b>Age of Dam</b> 2	<b>Dam's Production WWR</b> 2-100
		<b>BWR</b> 2-120	<b>YWR</b> 2-108

• Another of our Denver bulls. Exalt has the heaviest weaning weight we have ever had at 830 lb. adj. He is sired by Ulysses, a Phoenix son. The progeny of this bull will have lots of growth and length. He ranks in the top 2% of the breed for WW EPD and top 5% for YW. His Radar dam is a typical Radar daughter, good uddered and feminine.



Lot 5 — SHF Excel R117 X133

<b>05</b>		<b>SHF EXCEL R117 X133</b>	
Calved: Feb. 19, 2010		P43078153	H/P/S/D: P
Selling: Full possession and 3/4 semen interest.			
<b>BMI\$</b> 25	SHF RIB EYE M326 R117 (CHB){HYF,IEF,DLF} P42584003	KCF BENNETT 3008 M326 (CHB){HYF,DLF,IEF}	
<b>CEZ\$</b> 17		HVH MISS HUDSON 83K 8M	
<b>BI\$</b> 23		REMITALL GOVERNOR 236G (SOD,CHB)	
<b>CHB\$</b> 27	SHF GOVERNESS 236G K42 (DOD) P42074314	SHF MISS KEYNOTE 20X E39 (DOD)	
<b>BW</b> 3.3	<b>WW</b> 53	<b>YW</b> 82	<b>MM</b> 22
<b>M&amp;G</b> 49	<b>SC</b> 1.5	<b>FAT</b> 0.01	<b>REA</b> 0.29
<b>MARB</b> 0.21			
<b>CE Score</b> 1	<b>Act. BW</b> 101	<b>BW Ratio</b> 108	<b>Adj. WW</b> 710
<b>WW Ratio</b> 105	<b>Adj. YW</b> 1245	<b>YW Ratio</b> 98	<b>Frame Score</b> 6.1
<b>Adj. BF Ratio</b> 0.34-111	<b>Adj. REA Ratio</b> 13.43-100	<b>REA/cwt</b> 1.13	<b>Adj. MARB</b> 3.7
<b>MARB Ratio</b> 98	<b>Adj. SC (CM)</b> 38.4	<b>Age of Dam</b> 9	<b>Dam's Production WWR</b> 9-101
		<b>BWR</b> 9-104	<b>YWR</b> 7-98

• Excel is a top performance bull. His dam is a full sister to Marshall, and the grandam to our herd sire Vision. He is a big scrotum bull that ranks in the top 1% of the breed.



Lot 6 — SHF Exodus R117 X155

<b>06</b>		<b>SHF EXODUS R117 X155</b>	
Calved: Feb. 26, 2010		P43078174	H/P/S/D: P
Selling: Full possession and 1/2 semen interest.			
<b>BMI\$</b> 25	SHF RIB EYE M326 R117 (CHB){DLF,IEF,HYF} P42584003	KCF BENNETT 3008 M326 (CHB){IEF,HYF,DLF}	
<b>CEZ\$</b> 16		HVH MISS HUDSON 83K 8M	
<b>BI\$</b> 21		SHF INTERSTATE 20X D03 (SOD,CHB)	
<b>CHB\$</b> 34	SHF INTERSTATE D03 N29 (DOD){IEF,DLF} P42376987	SHF LADY 512 G07 ET	
<b>BW</b> 4.2	<b>WW</b> 64	<b>YW</b> 109	<b>MM</b> 17
<b>M&amp;G</b> 50	<b>SC</b> 1.4	<b>FAT</b> 0.00	<b>REA</b> 0.55
<b>MARB</b> 0.17			
<b>CE Score</b> 1	<b>Act. BW</b> 98	<b>BW Ratio</b> 104	<b>Adj. WW</b> 741
<b>WW Ratio</b> 109	<b>Adj. YW</b> 1295	<b>YW Ratio</b> 114	<b>Frame Score</b> 6.2
<b>Adj. BF Ratio</b> 0.28-136	<b>Adj. REA Ratio</b> 14.43-112	<b>REA/cwt</b> 1.17	<b>Adj. MARB</b> 3.92
<b>MARB Ratio</b> 109	<b>Adj. SC (CM)</b> 37.0	<b>Age of Dam</b> 7	<b>Dam's Production WWR</b> 6-99
		<b>BWR</b> 6-105	<b>YWR</b> 6-103

• If you want performance out of a great cow family, study Exodus. Monahan Ranch bought a maternal brother in our first sale. We entered him in the young sire test and he jumped from a mid 80 YW EPD to 129 YW EPD. This bull's WW and YW EPD rank him in the top 1% of the breed. His BMI\$ and CHB\$ Indexes are just as impressive. His dam is a past donor and full sister to J119. Be like Moses and lead your herd to the promised land, PROFIT.



SHF Interstate D03 J119 — Full sister to dam of Lot 6



# SANDHILL FARMS BULLS

<b>Lot 7</b>	<b>SHF EXPLORE R117 X93</b>									
	Calved: Feb. 15, 2010		P43078304			H/P/S/D: P				
Selling: Full possession and 1/2 semen interest.										
<b>BMI\$</b> <b>24</b>	SHF RIB EYE M326 R117 (CHB){HYF,IEF,DLF}					KCF BENNETT 3008 M326 (CHB){IEF,DLF,HYF}				
	P42584003					HVH MISS HUDSON 83K 8M				
<b>CEZ\$</b> <b>20</b>										
<b>BIIS</b> <b>21</b>	SHF MISS PROGRESS S61					SHF PROGRESS P20 (CHB){IEF,HYF,DLF}				
<b>CHBS</b> <b>25</b>	P42693432					SHF GOVERNESS 236G L91				
<b>BW</b>	<b>WW</b>	<b>YW</b>	<b>MM</b>	<b>M&amp;G</b>	<b>SC</b>	<b>FAT</b>	<b>REA</b>	<b>MARB</b>		
0.1	43	72	19	41	1.1	-0.01	0.23	0.19		
<b>CE Score</b>	<b>Act. BW</b>	<b>BW Ratio</b>	<b>Adj. WW</b>	<b>WW Ratio</b>	<b>Adj. YW</b>	<b>YW Ratio</b>	<b>Frame Score</b>			
1	82	89	648	95	1149	101	5.6			
<b>Adj. BF Ratio</b>	<b>Adj. REA Ratio</b>	<b>REA/cwt</b>	<b>Adj. MARB Ratio</b>	<b>MARB Ratio</b>	<b>Adj. SC (CM)</b>	<b>Age of Dam</b>	<b>BWR</b>	<b>Dam's Production WWR</b>	<b>YWR</b>	
0.24-113	12.97-100	1.17	2.74	76	NA	3	3-85	3-96	3-98	



**Lot 7 —  
SHF Explore R117 X93**

SHF Miss Progress S61 — Dam of Lot 7



- This is what I call a combination bull. Explore has the EPD spread that we like, low BW with an acceptable to high YW and he has the rib shape, muscle and depth of body to be a head turner. His calving ease indicators rank him in the top 3% of the breed. His dam is a typical Progress daughter, good uddered and big ribbed.

<b>Lot 8</b>	<b>SHF KEEN R117 X15</b>									
	Calved: Feb. 6, 2010		P43078168			H/P/S/D: P				
Selling: Full possession and 3/4 semen interest.										
<b>BMI\$</b> <b>23</b>	SHF RIB EYE M326 R117 (CHB){HYF,IEF,DLF}					KCF BENNETT 3008 M326 (CHB){DLF,HYF,IEF}				
	P42584003					HVH MISS HUDSON 83K 8M				
<b>CEZ\$</b> <b>20</b>										
<b>BIIS</b> <b>20</b>	SHF PROGRESS T94					SHF PROGRESS P20 (CHB){IEF,HYF,DLF}				
<b>CHBS</b> <b>26</b>	P42795809					SHF GOVERNESS 236G R135				
<b>BW</b>	<b>WW</b>	<b>YW</b>	<b>MM</b>	<b>M&amp;G</b>	<b>SC</b>	<b>FAT</b>	<b>REA</b>	<b>MARB</b>		
0.9	47	75	21	44	1.1	-0.01	0.28	0.14		
<b>CE Score</b>	<b>Act. BW</b>	<b>BW Ratio</b>	<b>Adj. WW</b>	<b>WW Ratio</b>	<b>Adj. YW</b>	<b>YW Ratio</b>	<b>Frame Score</b>			
1	84	93	698	103	1157	102	5.7			
<b>Adj. BF Ratio</b>	<b>Adj. REA Ratio</b>	<b>REA/cwt</b>	<b>Adj. MARB Ratio</b>	<b>MARB Ratio</b>	<b>Adj. SC (CM)</b>	<b>Age of Dam</b>	<b>BWR</b>	<b>Dam's Production WWR</b>	<b>YWR</b>	
0.16-77	14.03-109	1.25	2.6	72	38.5	2	2-92	2-98	2-99	



**Lot 8 — SHF Keen R117 X15**

- Keen has an impressive 0.9 BW EPD and an adjusted REA of 14.0 in. His Calving Ease EPD and CEZ\$ Index rank him in the top 3% of the breed for both traits and he still has both visible and measured muscle.

<b>Lot 9</b>	<b>SHF EXPERIENCE R117 X74</b>									
	Calved: Feb. 13, 2010		P43078289			H/P/S/D: P				
Selling: Full possession and 3/4 semen interest.										
<b>BMI\$</b> <b>27</b>	SHF RIB EYE M326 R117 (CHB){IEF,HYF,DLF}					KCF BENNETT 3008 M326 (CHB){DLF,HYF,IEF}				
	P42584003					HVH MISS HUDSON 83K 8M				
<b>CEZ\$</b> <b>22</b>										
<b>BIIS</b> <b>24</b>	SHF MISS PROGRESS S08 ET					SHF PROGRESS P20 (CHB){IEF,HYF,DLF}				
<b>CHBS</b> <b>26</b>	P42693480					SHF GOVERNESS 236G K42 (DOD)				
<b>BW</b>	<b>WW</b>	<b>YW</b>	<b>MM</b>	<b>M&amp;G</b>	<b>SC</b>	<b>FAT</b>	<b>REA</b>	<b>MARB</b>		
-1.0	42	68	22	43	1.3	0.00	0.13	0.31		
<b>CE Score</b>	<b>Act. BW</b>	<b>BW Ratio</b>	<b>Adj. WW</b>	<b>WW Ratio</b>	<b>Adj. YW</b>	<b>YW Ratio</b>	<b>Frame Score</b>			
1	78	85	654	96	1151	102	5.8			
<b>Adj. BF Ratio</b>	<b>Adj. REA Ratio</b>	<b>REA/cwt</b>	<b>Adj. MARB Ratio</b>	<b>MARB Ratio</b>	<b>Adj. SC (CM)</b>	<b>Age of Dam</b>	<b>BWR</b>	<b>Dam's Production WWR</b>	<b>YWR</b>	
0.21-99	12.24-95	1.1	4.01	112	NA	4	3-87	102-2	104-2	

- Experience is a full brother in blood to our herd sire, Vision. Notice his negative BW EPD and very good calving ease indicator. Again, he combines calving ease, muscle shape and performance. His dam sells in the sale as Lot 77.
- X74 is dehorned.

*Information overload simplified for the commercial or purebred cattleman. Indexes that affect your bottom line:*

#### BMI Index

- **Black cow \$Index** — Combination of weighted traits that affect the bottom line when mating the Hereford bull on black cows.

#### CEZ Index

- **Heifer bull \$Index** — Animal's potential for use on heifers.

#### BII Index

- **Brahman \$Index** — Similar to BMI index, but weighted heavier for traits that will make Brahman cattle more profitable.

#### CHB Index

- **Feedlot and carcass \$Index** — Animal's ability to perform in the feedlot and on the rail.

#### What \$ indexes can do for you.

- Assist and hasten your selection process.
- Analyze and weigh traits economically.
- Create \$\$\$ you can take to the bank.
- Measure how your breeder has been selecting traits that affect your bottom line. Adapted with permission from Rausch Herefords.



# SANDHILL FARMS BULLS



**Lot 10 —  
SHF Excellent R117 X181**

SHF Governess 2366 L37 — Dam of Lot 10



<b>10</b>	<b>SHF EXCELLENT R117 X181</b>							
	Calved: March 5, 2010	P43078202 H/P/S/D: P						
Selling: Full possession and 3/4 semen interest.								
<b>BMIS</b> <b>25</b> <b>CEZ\$</b> <b>16</b> <b>BIIS</b> <b>24</b> <b>CHBS</b> <b>29</b>	SHF RIB EYE M326 R117 (CHB){DLF,HYF,IEF} P42584003	KCF BENNETT 3008 M326 (CHB){HYF,IEF,DLF} HVH MISS HUDSON 83K 8M						
	SHF GOVERNESS 2366 L37 P42176503	MM RSM STOCKMASTER 512 {SOD,CHB}{DLF,IEF,HYF} SHF INTERSTATE D03 G80						
<b>BW</b> 3.1	<b>WW</b> 53	<b>YW</b> 85	<b>MM</b> 17	<b>M&amp;G</b> 43	<b>SC</b> 1.3	<b>FAT</b> -0.02	<b>REA</b> 0.48	<b>MARB</b> 0.21
<b>CE Score</b> 1	<b>Act. BW</b> 98	<b>BW Ratio</b> 104	<b>Adj. WW</b> 681	<b>WW Ratio</b> 100	<b>Adj. YW</b> 1203	<b>YW Ratio</b> 106	<b>Frame Score</b> 6.6	
<b>Adj. BF Ratio</b>	<b>Adj. REA Ratio</b>	<b>REA/cwt</b>	<b>Adj. MARB Ratio</b>	<b>MARB Ratio</b>	<b>Adj. SC (CM)</b>	<b>Age of Dam</b>	<b>Dam's Production</b>	
0.26-123	15.94-123	1.43	3.79	106	38.7	9	7-97	7-100
							<b>WWR</b>	<b>YWR</b>
								5-103

• Excellent is a 3/4 brother to Wonder, the high selling bull in our last sale. He is a natural calf with a below breed average BW EPD. Looking at his scan data, he ratioed 106 on MARB and 123 on REA. His REA is getting very close to 16 in. We have 15 daughters of L37 in production in our herd.



**Lot 11 — SHF Karma U38 X85**

<b>11</b>	<b>SHF KARMA U38 X85</b>							
	Calved: Feb. 13, 2010	P43078297 H/P/S/D: P						
Selling: Full possession and 3/4 semen interest.								
<b>BMIS</b> <b>20</b> <b>CEZ\$</b> <b>15</b> <b>BIIS</b> <b>17</b> <b>CHBS</b> <b>28</b>	SHF VISION R117 U38 {IEF,DLF} P42894861	SHF RIB EYE M326 R117 (CHB){DLF,HYF,IEF} SHF MISS PROGRESS S03 ET						
	SHF RADAR R125 T75 P42795896	SHF RADAR M326 R125 (CHB){IEF,HYF,DLF} SHF DOMINETTE 2C L42 {DOD}						
<b>BW</b> 1.9	<b>WW</b> 57	<b>YW</b> 91	<b>MM</b> 19	<b>M&amp;G</b> 48	<b>SC</b> 1.0	<b>FAT</b> 0.02	<b>REA</b> 0.49	<b>MARB</b> 0.10
<b>CE Score</b> 1	<b>Act. BW</b> 89	<b>BW Ratio</b> 99	<b>Adj. WW</b> 733	<b>WW Ratio</b> 108	<b>Adj. YW</b> 1198	<b>YW Ratio</b> 106	<b>Frame Score</b> 6.8	
<b>Adj. BF Ratio</b>	<b>Adj. REA Ratio</b>	<b>REA/cwt</b>	<b>Adj. MARB Ratio</b>	<b>MARB Ratio</b>	<b>Adj. SC (CM)</b>	<b>Age of Dam</b>	<b>Dam's Production</b>	
0.24-113	14.34-111	1.26	2.68	75	NA	2	2-102	2-109
							<b>WWR</b>	<b>YWR</b>
								2-107

• Karma is a top spread bull, 1.9 BW EPD and 91 YW EPD. His dam is a perfect uddered Radar daughter. Depending on her calving date, we may flush her prior to next year's sale. She is that good. This bull combines performance and shape.



**Catching the 4-H Steers**

<b>12</b>	<b>SHF EXTRA 502R X51</b>							
	Calved: Feb. 11, 2010	P43078270 H/P/S/D: P						
Selling: Full possession and 3/4 semen interest.								
<b>BMIS</b> <b>27</b> <b>CEZ\$</b> <b>18</b> <b>BIIS</b> <b>24</b> <b>CHBS</b> <b>35</b>	PCR 286 MR ADVISOR 502R {HYF,DLF,IEF} P42620083	HUTH FULL HOUSE N003 PCR JACKLYN NIKOLE 344N {DLF,IEF}						
	SHF RIB EYE R117 T130 P42795902	SHF RIB EYE M326 R117 (CHB){HYF,DLF,IEF} SHF GOVERNESS 2366 K42 {DOD}						
<b>BW</b> 2.7	<b>WW</b> 62	<b>YW</b> 94	<b>MM</b> 20	<b>M&amp;G</b> 51	<b>SC</b> 1.4	<b>FAT</b> 0.00	<b>REA</b> 0.46	<b>MARB</b> 0.30
<b>CE Score</b> 1	<b>Act. BW</b> 92	<b>BW Ratio</b> 102	<b>Adj. WW</b> 713	<b>WW Ratio</b> 105	<b>Adj. YW</b> 1157	<b>YW Ratio</b> 102	<b>Frame Score</b> 6.3	
<b>Adj. BF Ratio</b>	<b>Adj. REA Ratio</b>	<b>REA/cwt</b>	<b>Adj. MARB Ratio</b>	<b>MARB Ratio</b>	<b>Adj. SC (CM)</b>	<b>Age of Dam</b>	<b>Dam's Production</b>	
0.15-74	13.51-105	1.22	4.18	116	36.1	2	2-95	2-103
							<b>WWR</b>	<b>YWR</b>
								2-101

• Extra is another top Advisor son. He ranks in the top 1% of the breed for BMIS, BIIS and CHBS. His dam was a donor for us last year, a very good Rib Eye daughter. Notice he ratioed 116 on MARB.



# SANDHILL FARMS BULLS

David "Chip" Kemp/Division of Animal Science/University of Missouri

I tend to judge the progression of an operation by studying the cattle that are in the bottom tier of their program. Any ranch or farm can eventually make a great one — sometimes by design, sometimes by accident. However, to make widespread improvement within a herd is always the goal. To stay in business you have to market a volume of bulls that appeal to commercial buyers, not just one or two lead off bulls. As hard as it is to imagine, every year I stop by Sandhill the quality gets deeper. I'm privileged to study a lot of cattle on a number of purebred programs every year. I would put the lineup the Schultz family has put together against any operation I've had the privilege to visit. There were numerous elite bulls that could push purebred operations forward, but what struck me more was the number of stout, rugged, durable bulls that would work in many diverse commercial operations.



<b>13</b>	<b>SHF EXOTIC U38 X86</b>								
	Calved: Feb. 14, 2010 P43078298 H/P/S/D: P								
Selling: Full possession and 1/2 semen interest.									
<b>BMI\$</b> <b>23</b>	SHF VISION R117 U38 (DLF,IEF) P42894861	SHF RIB EYE M326 R117 (CHB)(IEF,HYF,DLF)							
<b>CEZ\$</b> <b>17</b>		SHF MISS PROGRESS S03 ET							
<b>BIIS</b> <b>21</b>		REMITALL GOVERNOR 236G (SOD,CHB)							
<b>CHB\$</b> <b>27</b>	SHF GOVERNESS 236G N75 P42377663	SHF LADY MASTER 092 F13							
<b>BW</b>	<b>WW</b>	<b>YW</b>	<b>MM</b>	<b>M&amp;G</b>	<b>SC</b>	<b>FAT</b>	<b>REA</b>	<b>MARB</b>	
3.1	50	71	18	43	1.0	-0.01	0.30	0.23	
<b>CE Score</b>	<b>Act. BW</b>	<b>BW Ratio</b>	<b>Adj. WW</b>	<b>WW Ratio</b>	<b>Adj. YW</b>	<b>YW Ratio</b>	<b>Frame Score</b>		
1	98	104	697	103	1135	100	6.6		
<b>Adj. BF Ratio</b>	<b>Adj. REA Ratio</b>	<b>REA/cwt</b>	<b>Adj. MARB Ratio</b>	<b>MARB Ratio</b>	<b>Adj. SC (CM)</b>	<b>Age of Dam</b>	<b>BWR</b>	<b>Dam's Production WWR</b>	<b>YWR</b>
0.24-113	12.95-100	1.16	3.65	102	NA	6	6-100	5-98	5-97



Lot 13 — SHF Exotic U38 X86

- Exotic is one of the most attractive Vision sons in the sale. Very balanced EPDs and has the volume, shape and muscle to be exciting. His cow family has been very good to us, producing some of the top cattle in past sales. I think this bull will make his past family mates pink with envy.

<b>14</b>	<b>SHF EXACTLY T100 X125</b>								
	Calved: Feb. 18, 2010 P43078146 H/P/S/D: P								
Selling: Full possession and 3/4 semen interest.									
<b>BMI\$</b> <b>23</b>	SHF TAHOE R117 T100 P42795891	SHF RIB EYE M326 R117 (CHB)(HYF,IEF,DLF)							
<b>CEZ\$</b> <b>15</b>		SHF LADY 512 L73 (DOD)							
<b>BIIS</b> <b>20</b>		SHF PHOENIX M33 P68 (CHB)							
<b>CHB\$</b> <b>26</b>	RPH ANGIE 74T P42809242	/S LADY MOM 5138R							
<b>BW</b>	<b>WW</b>	<b>YW</b>	<b>MM</b>	<b>M&amp;G</b>	<b>SC</b>	<b>FAT</b>	<b>REA</b>	<b>MARB</b>	
4.5	59	97	19	49	1.5	0.02	0.32	0.04	
<b>CE Score</b>	<b>Act. BW</b>	<b>BW Ratio</b>	<b>Adj. WW</b>	<b>WW Ratio</b>	<b>Adj. YW</b>	<b>YW Ratio</b>	<b>Frame Score</b>		
1	93	104	671	99	1164	103	5.6		
<b>Adj. BF Ratio</b>	<b>Adj. REA Ratio</b>	<b>REA/cwt</b>	<b>Adj. MARB Ratio</b>	<b>MARB Ratio</b>	<b>Adj. SC (CM)</b>	<b>Age of Dam</b>	<b>BWR</b>	<b>Dam's Production WWR</b>	<b>YWR</b>
0.31-148	12.41-96	1.14	2.75	77	34.8	2	2-104	2-99	2-103



Lot 14 — SHF Exactly T100 X125

- Here is a Tahoe son. Tahoe was one of the top selling bulls in our first sale going to Haroldson's in Canada. He sires shape and performance. X125's dam is a good Phoenix daughter that has an udder that will last.



# SANDHILL FARMS BULLS



Lot 15 — SHF Extra-Bold 502R X73

<b>015</b>		<b>SHF EXTRA-BOLD 502R X73</b>	
Calved: Feb. 13, 2010		P43078288	H/P/S/D: P
Selling: Full possession and 3/4 semen interest.			
<b>BMI\$</b> 28	PCR 286 MR ADVISOR 502R (IEF,HYF,DLF) P42620083		HUTH FULL HOUSE N003
<b>CEZ\$</b> 21			PCR JACKLYN NIKOLE 344N (IEF,DLF)
<b>BIIS</b> 24			SHF PROGRESS P20 (CHB){(IEF,HYF,DLF)}
<b>CHB\$</b> 33	SHF PROGRESS T138 P42795811		SHF MISS M326 R130
<b>BW</b> 0.7	<b>WW</b> 57	<b>YW</b> 79	<b>MM</b> 18
<b>M&amp;G</b> 46	<b>SC</b> 1.2	<b>FAT</b> -0.01	<b>REA</b> 0.33
<b>MARB</b> 0.30			
<b>CE Score</b> 1	<b>Act. BW</b> 81	<b>BW Ratio</b> 90	<b>Adj. WW</b> 683
<b>WW Ratio</b> 101	<b>Adj. YW</b> 1063	<b>YW Ratio</b> 94	<b>Frame Score</b> 5.6
<b>Adj. BF Ratio</b> 0.19-89	<b>Adj. REA Ratio</b> 12.04-93	<b>REA/cwt</b> 1.19	<b>Adj. MARB Ratio</b> 3.36
<b>MARB Ratio</b> 94	<b>Adj. SC (CM)</b> NA	<b>Age of Dam</b> 2	<b>Dam's Production WWR</b> 2-86
<b>YWR</b> 1-94			

• Extra-Bold is a fun bull to write about. He is from a great cow family that has been here for 20 years, has a great set of EPDs and is attractive and will be a productive bull. This is the only bull in the sale that is in the top 1% of the breed for all four Indexes. This is great stuff.



Moving Brooke to New Mexico for Internship

<b>016</b>		<b>SHF KING U38 X131</b>	
Calved: Feb. 19, 2010		P43078151	H/P/S/D: P
Selling: Full possession and 3/4 semen interest.			
<b>BMI\$</b> 26	SHF VISION R117 U38 (IEF,DLF) P42894861		SHF RIB EYE M326 R117 (CHB){(DLF,HYF,IEF)}
<b>CEZ\$</b> 19			SHF MISS PROGRESS S03 ET
<b>BIIS</b> 23			KCF BENNETT P606 S79
<b>CHB\$</b> 29	SHF BOOMER 79 U140 P42924659		SHF GOVERNESS 236G K42 (DOD)
<b>BW</b> 0.3	<b>WW</b> 50	<b>YW</b> 75	<b>MM</b> 25
<b>M&amp;G</b> 50	<b>SC</b> 1.3	<b>FAT</b> 0.03	<b>REA</b> 0.36
<b>MARB</b> 0.38			
<b>CE Score</b> 1	<b>Act. BW</b> 75	<b>BW Ratio</b> 89	<b>Adj. WW</b> 719
<b>WW Ratio</b> 106	<b>Adj. YW</b> 1169	<b>YW Ratio</b> 103	<b>Frame Score</b> 5.9
<b>Adj. BF Ratio</b> 0.25-119	<b>Adj. REA Ratio</b> 13.23-102	<b>REA/cwt</b> 1.26	<b>Adj. MARB Ratio</b> 5.5
<b>MARB Ratio</b> 153	<b>Adj. SC (CM)</b> 39.2	<b>Age of Dam</b> 1	<b>Dam's Production WWR</b> 1-89
<b>YWR</b> 1-103			

• King has rung the bell. 75 lb. BW, ratioed 106 at weaning, has a MARB of 5.5, ratioing 153 with an above average REA. He has some of the top Indexes in the sale ranking him in the top 1% to 5% in the breed and has a great dam and cow family to support all these traits. When we take yearling data, surprises like these are what you hope for.

<b>017</b>		<b>SHF EXHIBIT U38 X55</b>	
Calved: Feb. 10, 2010		P43078273	H/P/S/D: P
Selling: Full possession and 3/4 semen interest.			
<b>BMI\$</b> 23	SHF VISION R117 U38 (IEF,DLF) P42894861		SHF RIB EYE M326 R117 (CHB){(IEF,HYF,DLF)}
<b>CEZ\$</b> 19			SHF MISS PROGRESS S03 ET
<b>BIIS</b> 20			SHF INTERSTATE D03 N17 (DOD)
<b>CHB\$</b> 26	SHF INTERSTATE D03 N17 (DOD) P42377314		SHF INTERSTATE 20X D03 (S0D,CHB)
			SHF LADY 512 G07 ET
<b>BW</b> 0.4	<b>WW</b> 47	<b>YW</b> 73	<b>MM</b> 19
<b>M&amp;G</b> 42	<b>SC</b> 1.0	<b>FAT</b> 0.00	<b>REA</b> 0.30
<b>MARB</b> 0.20			
<b>CE Score</b> 1	<b>Act. BW</b> 81	<b>BW Ratio</b> 86	<b>Adj. WW</b> 627
<b>WW Ratio</b> 92	<b>Adj. YW</b> 1072	<b>YW Ratio</b> 95	<b>Frame Score</b> 6.3
<b>Adj. BF Ratio</b> 0.14-69	<b>Adj. REA Ratio</b> 12.69-98	<b>REA/cwt</b> 1.19	<b>Adj. MARB Ratio</b> 3.87
<b>MARB Ratio</b> 108	<b>Adj. SC (CM)</b> 34.0	<b>Age of Dam</b> 7	<b>Dam's Production WWR</b> 6-101
<b>YWR</b> 4-101			

• Exhibit is another Vision son that is solid across the board. His cow family is very strong, as his dam is a full sister to the dam of Exodus, Lot 6.

<b>018</b>		<b>SHF KICK-OFF U38 X69</b>	
Calved: Feb. 13, 2010		P43078284	H/P/S/D: P
Selling: Full possession and 3/4 semen interest.			
<b>BMI\$</b> 22	SHF VISION R117 U38 (DLF,IEF) P42894861		SHF RIB EYE M326 R117 (CHB){(IEF,DLF,HYF)}
<b>CEZ\$</b> 15			SHF MISS PROGRESS S03 ET
<b>BIIS</b> 19			SHF SOLDIER 13P S66
<b>CHB\$</b> 31	SHF SOLDIER S66 U121 P42894571		SHF INTERSTATE D03 G19
<b>BW</b> 3.7	<b>WW</b> 57	<b>YW</b> 83	<b>MM</b> 18
<b>M&amp;G</b> 47	<b>SC</b> 0.9	<b>FAT</b> 0.00	<b>REA</b> 0.52
<b>MARB</b> 0.24			
<b>CE Score</b> 1	<b>Act. BW</b> 87	<b>BW Ratio</b> 103	<b>Adj. WW</b> 721
<b>WW Ratio</b> 106	<b>Adj. YW</b> 1147	<b>YW Ratio</b> 101	<b>Frame Score</b> 5.1
<b>Adj. BF Ratio</b> 0.23-108	<b>Adj. REA Ratio</b> 13.94-108	<b>REA/cwt</b> 1.33	<b>Adj. MARB Ratio</b> 3.99
<b>MARB Ratio</b> 111	<b>Adj. SC (CM)</b> NA	<b>Age of Dam</b> 1	<b>Dam's Production WWR</b> 1-103
<b>YWR</b> 1-101			

• Kick-Off is one of the thickest topped, wide based bulls since birth. Then he followed this up with a ratio of 111 on MARB and 108 on REA. His CHB\$ Index of 31 ranks him in the top 1% of the breed.



# SANDHILL FARMS BULLS

19		SHF EXTERIOR S07 X164							
Calved: Feb. 28, 2010		P43078183 H/P/S/D: P							
Selling: Full possession and 3/4 semen interest.									
<b>BMS</b> 17 <b>CEZ\$</b> 16 <b>BIIS</b> 14 <b>CHB\$</b> 22	SHF STYLE 412T S07 ET P42705380		GK EXPLOSION 412T (SOD){HYF,DLF,IEF}						
			SHF INTERSTATE D03 J119						
	SHF RADAR R125 T07 ET (IEF,DLF) P42795982		SHF RADAR M326 R125 (CHB){IEF,HYF,DLF}						
		SHF GOVERNESS 236G L37							
<b>BW</b>	<b>WW</b>	<b>YW</b>	<b>MM</b>	<b>M&amp;G</b>	<b>SC</b>	<b>FAT</b>	<b>REA</b>	<b>MARB</b>	
0.0	48	80	17	40	0.6	0.03	0.26	0.11	
<b>CE Score</b>	<b>Act. BW</b>	<b>BW Ratio</b>	<b>Adj. WW</b>	<b>WW Ratio</b>	<b>Adj. YW</b>	<b>YW Ratio</b>	<b>Frame Score</b>		
1	60	67	668	98	1160	102	5.8		
<b>Adj. BF Ratio</b>	<b>Adj. REA Ratio</b>	<b>REA/cwt</b>	<b>Adj. MARB Ratio</b>	<b>MARB Ratio</b>	<b>Adj. SC (CM)</b>	<b>Age of Dam</b>	<b>Dam's Production BWR</b>	<b>WWR</b>	<b>YWR</b>
0.21-102	13.57-105	1.28	3.12	87	NA	3	2-81	2-101	2-99

• Exterior is a natural born calf that started out with a 60 lb. actual BW and shows a spread EPD from 0.0 to 80 YW EPD. His dam is T07, a donor dam for us and is from the same cow family as Kennedy, the Lot 1 in this year's sale and Wonder, the Lot 1 of last year's sale.

20		SHF EXCITE 502R X101							
Calved: Feb. 15, 2010		P43078124 H/P/S/D: P							
Selling: Full possession and 3/4 semen interest.									
<b>BMS</b> 25 <b>CEZ\$</b> 18 <b>BIIS</b> 22 <b>CHB\$</b> 31	PCR 286 MR ADVISOR 502R (IEF,DLF,HYF) P42620083		HUTH FULL HOUSE N003						
			PCR JACKLYN NIKOLE 344N (IEF,DLF)						
	SHF GOVERNESS 236G L64 P42176568		REMITALL GOVERNOR 236G (SOD,CHB)						
		SHF LADY MASTER 092 F13							
<b>BW</b>	<b>WW</b>	<b>YW</b>	<b>MM</b>	<b>M&amp;G</b>	<b>SC</b>	<b>FAT</b>	<b>REA</b>	<b>MARB</b>	
2.0	54	76	18	45	1.0	0.02	0.21	0.41	
<b>CE Score</b>	<b>Act. BW</b>	<b>BW Ratio</b>	<b>Adj. WW</b>	<b>WW Ratio</b>	<b>Adj. YW</b>	<b>YW Ratio</b>	<b>Frame Score</b>		
1	86	91	720	106	1147	101	6.6		
<b>Adj. BF Ratio</b>	<b>Adj. REA Ratio</b>	<b>REA/cwt</b>	<b>Adj. MARB Ratio</b>	<b>MARB Ratio</b>	<b>Adj. SC (CM)</b>	<b>Age of Dam</b>	<b>Dam's Production BWR</b>	<b>WWR</b>	<b>YWR</b>
0.32-152	12.27-95	1.1	4.18	116	37.2	8	8-97	8-99	8-98

• Excite is a son of Advisor and a natural calf out of L64. Her cow family has been very consistent in adding MARB to their progeny. So, it didn't surprise me when the data came back showing a 116 ratio on MARB. Excite ranks in the top 1% of the breed for CHB\$ and 2% for BMS.

## Banks Polled Herefords, Hamilton, Ohio

"It is always exciting to see the results of a breeding program based on documented performance, practical selection criteria, common sense and hard work. Your group of bulls and heifer calves show the soundness of the generation that preceded them. One only has to look at the group of cows nursing the heifer calves to appreciate the future potential of these calves."



21		SHF KENNETH R117 X130							
Calved: Feb. 19, 2010		P43078150 H/P/S/D: P							
Selling: Full possession and 3/4 semen interest.									
<b>BMS</b> 23 <b>CEZ\$</b> 14 <b>BIIS</b> 22 <b>CHB\$</b> 29	SHF RIB EYE M326 R117 (CHB){DLF,HYF,IEF} P42584003		KCF BENNETT 3008 M326 (CHB){HYF,DLF,IEF}						
			HVH MISS HUDSON 83K 8M						
	REMITALL SALLY 102U P42964688		REMITALL SILENCER 144S						
		REMITALL SALLY 131K							
<b>BW</b>	<b>WW</b>	<b>YW</b>	<b>MM</b>	<b>M&amp;G</b>	<b>SC</b>	<b>FAT</b>	<b>REA</b>	<b>MARB</b>	
4.3	52	89	19	45	1.3	-0.02	0.25	0.23	
<b>CE Score</b>	<b>Act. BW</b>	<b>BW Ratio</b>	<b>Adj. WW</b>	<b>WW Ratio</b>	<b>Adj. YW</b>	<b>YW Ratio</b>	<b>Frame Score</b>		
2	88	103	664	98	1211	107	6.1		
<b>Adj. BF Ratio</b>	<b>Adj. REA Ratio</b>	<b>REA/cwt</b>	<b>Adj. MARB Ratio</b>	<b>MARB Ratio</b>	<b>Adj. SC (CM)</b>	<b>Age of Dam</b>	<b>Dam's Production BWR</b>	<b>WWR</b>	<b>YWR</b>
0.23-110	12.43-96	1.14	4.49	125	37.1	2	1-103	1-98	1-107

• Kenneth is a very attractive bull out of a cow family line that originated in the Remittal herd in Canada. He boasts a 125 ratio on MARB and 107 YW ratio.



Lot 21 — SHF Kenneth R117 X130



# SANDHILL FARMS BULLS



Tyler Joins Farm House Fraternity

22		SHF EXTENT T100 X152	
Calved: Feb. 23, 2010		P43078171 H/P/S/D: P	
Selling: Full possession and 3/4 semen interest.			
<b>BMIS</b> 27	SHF TAHOE R117 T100 P42795891	SHF RIB EYE M326 R117 (CHB){IEF,DLF,HYF}	
<b>CEZS</b> 16		SHF LADY 512 L73 (DOD)	
<b>BIIS</b> 24		KCF BENNETT 3008 M326 (CHB){DLF,IEF,HYF}	
<b>CHBS</b> 30	SHF MISS M326 S96 P42693379	SHF MISS M82 P74 (DOD)	
<b>BW</b> 4.5	<b>WW</b> 58	<b>YW</b> 95	<b>MM</b> 17
<b>M&amp;G</b> 46	<b>SC</b> 1.6	<b>FAT</b> -0.02	<b>REA</b> 0.38
<b>MARB</b> 0.11			
<b>CE Score</b> 1	<b>Act. BW</b> 94	<b>BW Ratio</b> 103	<b>Adj. WW</b> 706
<b>WW Ratio</b> 104	<b>Adj. YW</b> 1201	<b>YW Ratio</b> 106	<b>Frame Score</b> 5.7
<b>Adj. BF Ratio</b> 0.19-91	<b>Adj. REA Ratio</b> 13.29-103	<b>REA/cwt</b> 1.18	<b>Adj. MARB Ratio</b> 2.88
<b>MARB Ratio</b> 80	<b>Adj. SC (CM)</b> 36.2	<b>Age of Dam</b> 3	<b>Dam's Production</b> 3-97
	<b>BWR</b> 3-100	<b>WWR</b> 3-100	<b>YWR</b> 3-99

- A double bred M326. Extent ranks in the top 1% for three out of the four breed indexes.



HVH Miss Hudson 83K 8M — Dam of Lot 23

23		SHF EXALT S07 X175	
Calved: March 2, 2010		P43078195 H/P/S/D: P	
Selling: Full possession and 3/4 semen interest.			
<b>BMIS</b> 18	SHF STYLE 412T S07 ET P42705380	GK EXPLOSION 412T (SOD){DLF,IEF,HYF}	
<b>CEZS</b> 15		SHF INTERSTATE D03 J119	
<b>BIIS</b> 16		MSU MF HUDSON 19H (SOD,CHB){HYF}	
<b>CHBS</b> 27	HVH MISS HUDSON 83K 8M P42247970	SUN VINDY MISS 83K	
<b>BW</b> 3.3	<b>WW</b> 54	<b>YW</b> 83	<b>MM</b> 21
<b>M&amp;G</b> 48	<b>SC</b> 0.8	<b>FAT</b> 0.02	<b>REA</b> 0.08
<b>MARB</b> 0.22			
<b>CE Score</b> 1	<b>Act. BW</b> 91	<b>BW Ratio</b> 96	<b>Adj. WW</b> 689
<b>WW Ratio</b> 101	<b>Adj. YW</b> 1152	<b>YW Ratio</b> 102	<b>Frame Score</b> 6.3
<b>Adj. BF Ratio</b> 0.23-113	<b>Adj. REA Ratio</b> 11.7-91	<b>REA/cwt</b> 1.08	<b>Adj. MARB Ratio</b> 4.3
<b>MARB Ratio</b> 120	<b>Adj. SC (CM)</b> 33.5	<b>Age of Dam</b> 8	<b>Dam's Production</b> 7-94
	<b>BWR</b> 7-103	<b>WWR</b> 7-103	<b>YWR</b> 7-104

- Below average ratio for BW and above average for growth. Then he showed up with a 120 ratio on MARB. To explain this, look at the bottom of the pedigree. He is out of Rib Eye's dam.



Courtney at Junior Nationals in Indianapolis

24		SHF KEITH U38 X154	
Calved: Feb. 23, 2010		P43078173 H/P/S/D: P	
Selling: Full possession and 3/4 semen interest.			
<b>BMIS</b> 23	SHF VISION R117 U38 (DLF,IEF) P42894861	SHF RIB EYE M326 R117 (CHB){DLF,IEF,HYF}	
<b>CEZS</b> 15		SHF MISS PROGRESS S03 ET	
<b>BIIS</b> 20		REMITALL GOVERNOR 236G (SOD,CHB)	
<b>CHBS</b> 32	SHF GOVERNESS 236G T99 P42795892	SHF STOCK J105 L65	
<b>BW</b> 4.2	<b>WW</b> 59	<b>YW</b> 87	<b>MM</b> 21
<b>M&amp;G</b> 50	<b>SC</b> 1.1	<b>FAT</b> -0.01	<b>REA</b> 0.63
<b>MARB</b> 0.21			
<b>CE Score</b> 1	<b>Act. BW</b> 98	<b>BW Ratio</b> 109	<b>Adj. WW</b> 732
<b>WW Ratio</b> 108	<b>Adj. YW</b> 1179	<b>YW Ratio</b> 104	<b>Frame Score</b> 5.7
<b>Adj. BF Ratio</b> 0.21-101	<b>Adj. REA Ratio</b> 16.09-125	<b>REA/cwt</b> 1.47	<b>Adj. MARB Ratio</b> 3.22
<b>MARB Ratio</b> 90	<b>Adj. SC (CM)</b> 33.9	<b>Age of Dam</b> 3	<b>Dam's Production</b> 2-97
	<b>BWR</b> 2-104	<b>WWR</b> 2-104	<b>YWR</b> 2-100

- This Vision son has the largest REA in the sale at over 16 in. He has a lot of growth and is in the top 1% for CHBS.



# SANDHILL FARMS BULLS

25		SHF EXACT 502R X22	
Calved: Feb. 7, 2010		P43078242 H/P/S/D: P	
Selling: Full possession and 3/4 semen interest.			
<b>BMI\$</b> 25	HUTH FULL HOUSE N003		
<b>CEZ\$</b> 20	PCR 286 MR ADVISOR 502R {HYF,IEF,DLF}		
<b>BIIS</b> 20	PCR JACKLYN NIKOLE 344N {DLF,IEF}		
<b>CHBS</b> 34	RU 20X BOULDER 57G {CHB}		
	NJW 57G 12E FOREVER 67M		
	NJW 25C 1A VACA 12E		
<b>BW</b>	<b>WW</b>	<b>YW</b>	<b>MM</b>
1.3	60	97	18
<b>M&amp;G</b>	<b>SC</b>	<b>FAT</b>	<b>REA</b>
48	1.1	0.00	0.51
<b>MARB</b>	<b>CE Score</b>	<b>Act. BW</b>	<b>BW Ratio</b>
0.21	1	86	91
<b>Adj. WW</b>	<b>WW Ratio</b>	<b>Adj. YW</b>	<b>YW Ratio</b>
730	107	1203	106
<b>Frame Score</b>	<b>Adj. BF Ratio</b>	<b>Adj. REA Ratio</b>	<b>REA/cwt</b>
7.0	0.21-102	13.25-103	1.1
<b>Adj. MARB Ratio</b>	<b>Adj. SC (CM)</b>	<b>Age of Dam</b>	<b>Dam's Production WWR</b>
109	34.9	7	7-98
<b>YWR</b>	<b>YWR</b>	<b>YWR</b>	<b>YWR</b>
6-103	7-99	2-101	2-99

• Exact is another of these spread bulls: 1.3 for BW, top 10% of the breed and 97 for YW, top 1% of the breed. This is backed up with actual data from birth to yearling. Good carcass ratios also.

26		SHF KEN 502R X11 ET	
Calved: Feb. 5, 2010		P43078133 H/P/S/D: P	
Selling: Full possession and 3/4 semen interest.			
<b>BMI\$</b> 23	HUTH FULL HOUSE N003		
<b>CEZ\$</b> 16	PCR 286 MR ADVISOR 502R {DLF,IEF,HYF}		
<b>BIIS</b> 19	PCR JACKLYN NIKOLE 344N {DLF,IEF}		
<b>CHBS</b> 33	SHF RADAR M326 R125 {CHB}{IEF,DLF,HYF}		
	SHF RADAR R125 T07 ET {IEF,DLF}		
	SHF GOVERNESS 236G L37		
<b>BW</b>	<b>WW</b>	<b>YW</b>	<b>MM</b>
1.8	60	95	17
<b>M&amp;G</b>	<b>SC</b>	<b>FAT</b>	<b>REA</b>
47	1.0	0.00	0.47
<b>MARB</b>	<b>CE Score</b>	<b>Act. BW</b>	<b>BW Ratio</b>
0.23	1	88	91
<b>Adj. WW</b>	<b>WW Ratio</b>	<b>Adj. YW</b>	<b>YW Ratio</b>
733	1195	1195	1195
<b>Frame Score</b>	<b>Adj. BF Ratio</b>	<b>Adj. REA Ratio</b>	<b>REA/cwt</b>
6.7	0.17-90	13.22-103	1.11
<b>Adj. MARB Ratio</b>	<b>Adj. SC (CM)</b>	<b>Age of Dam</b>	<b>Dam's Production WWR</b>
98	34.5	3	2-81
<b>YWR</b>	<b>YWR</b>	<b>YWR</b>	<b>YWR</b>
2-99	2-101	2-101	2-99

• A larger framed bull with the big spread on birth to yearling. He is an ET bull out of T07, the same cow family as Kennedy and Wonder.

27		SHF EXTERNAL 4037 X110	
Calved: Feb. 16, 2010		P43089241 H/P/S/D: P	
Selling: Full possession and 3/4 semen interest.			
<b>BMI\$</b> 18	CS BOOMER 29F {SOD,CHB}{DLF,IEF,HYF}		
<b>CEZ\$</b> 16	THM DURANGO 4037 {CHB}{HYF,DLF,IEF}		
<b>BIIS</b> 15	THM 7085 VICTRA 9036 {DLF,HYF,IEF}		
<b>CHBS</b> 27	SHF MARSHAL 236G M33 {SOD,CHB}		
	SHF QUEEN M33 T120		
	SHF MISS 105A M06 ET		
<b>BW</b>	<b>WW</b>	<b>YW</b>	<b>MM</b>
3.8	52	84	20
<b>M&amp;G</b>	<b>SC</b>	<b>FAT</b>	<b>REA</b>
46	0.7	-0.02	0.35
<b>MARB</b>	<b>CE Score</b>	<b>Act. BW</b>	<b>BW Ratio</b>
0.11	1	97	108
<b>Adj. WW</b>	<b>WW Ratio</b>	<b>Adj. YW</b>	<b>YW Ratio</b>
668	98	1149	101
<b>Frame Score</b>	<b>Adj. BF Ratio</b>	<b>Adj. REA Ratio</b>	<b>REA/cwt</b>
5.6	0.22-104	11.68-90	1.08
<b>Adj. MARB Ratio</b>	<b>Adj. SC (CM)</b>	<b>Age of Dam</b>	<b>Dam's Production WWR</b>
84	34.7	2	2-96
<b>YWR</b>	<b>YWR</b>	<b>YWR</b>	<b>YWR</b>
2-99	2-100	2-100	2-99

• A deep, soggy Durango son. His dam is a good uddered Marshal daughter that goes back to one of the first cows we ever flushed, G19.



Brooke with Friends at Kappa

28		SHF EXEMPLARY 4037 X120	
Calved: Feb. 16, 2010		P43089242 H/P/S/D: P	
Selling: Full possession and 3/4 semen interest.			
<b>BMI\$</b> 19	CS BOOMER 29F {SOD,CHB}{DLF,HYF,IEF}		
<b>CEZ\$</b> 15	THM DURANGO 4037 {CHB}{HYF,IEF,DLF}		
<b>BIIS</b> 16	THM 7085 VICTRA 9036 {IEF,DLF,HYF}		
<b>CHBS</b> 30	MM RSM STOCKMASTER 512 {SOD,CHB}{HYF,DLF,IEF}		
	SHF LADY 512 M100		
	SHF MISS KEYNOTE 20X E04		
<b>BW</b>	<b>WW</b>	<b>YW</b>	<b>MM</b>
4.1	54	92	16
<b>M&amp;G</b>	<b>SC</b>	<b>FAT</b>	<b>REA</b>
43	0.7	-0.02	0.42
<b>MARB</b>	<b>CE Score</b>	<b>Act. BW</b>	<b>BW Ratio</b>
0.18	1	99	105
<b>Adj. WW</b>	<b>WW Ratio</b>	<b>Adj. YW</b>	<b>YW Ratio</b>
645	95	1157	102
<b>Frame Score</b>	<b>Adj. BF Ratio</b>	<b>Adj. REA Ratio</b>	<b>REA/cwt</b>
5.9	0.19-89	12.38-96	1.1
<b>Adj. MARB Ratio</b>	<b>Adj. SC (CM)</b>	<b>Age of Dam</b>	<b>Dam's Production WWR</b>
101	38.7	7	6-99
<b>YWR</b>	<b>YWR</b>	<b>YWR</b>	<b>YWR</b>
6-103	6-98	6-98	6-103

• This bull is out of the cow family that did as much for us to get started as any, Interstate's cow family. Consistent with the Durangos, deep and soggy.



Lot 28 — SHF Exemplary 4037 X120



# SANDHILL FARMS BULLS



Lot 29 — SHF Kansas R117 X121

<b>29</b>		<b>SHF KANSAS R117 X121</b>	
Calved: Feb. 16, 2010		P43078143	H/P/S/D: P
Selling: Full possession and 3/4 semen interest.			
<b>BMI\$</b> <b>27</b>	SHF RIB EYE M326 R117 (CHB){HYF,DLF,IEF}		KCF BENNETT 3008 M326 (CHB){HYF,IEF,DLF}
<b>CEZ\$</b> <b>19</b>	P42584003		HVH MISS HUDSON 83K 8M
<b>BIIS</b> <b>25</b>	SHF MISS M82 P74 (DOD)		SHF MONACO 236G M82
<b>CHBS</b> <b>26</b>	P42481146		SHF LADY 512 K28
<b>BW</b>	<b>WW</b>	<b>YW</b>	<b>MM</b>
2.0	47	65	19
<b>M&amp;G</b>	<b>SC</b>	<b>FAT</b>	<b>REA</b>
42	1.3	-0.02	0.23
<b>MARB</b>			
0.25			
<b>CE Score</b>	<b>Act. BW</b>	<b>BW Ratio</b>	<b>Adj. WW</b>
1	90	96	722
<b>WW Ratio</b>	<b>Adj. YW</b>	<b>YW Ratio</b>	<b>Frame Score</b>
106	1127	99	5.6
<b>Adj. BF Ratio</b>	<b>Adj. REA Ratio</b>	<b>REA/cwt</b>	<b>Adj. MARB Ratio</b>
0.21-99	13.28-103	1.21	4.63
<b>MARB Ratio</b>	<b>Adj. SC (CM)</b>	<b>Age of Dam</b>	<b>Dam's Production WWR</b>
129	37.2	5	5-105
<b>YWR</b>	<b>BWR</b>	<b>WWR</b>	<b>YWR</b>
5-102	5-95	5-105	5-102

• Kansas is a really impressive Rib Eye son. Top 1% for BMI\$ and BIIS and has a 129 ratio on MARB.



Lot 30 — SHF X-Ray U15 X145

<b>30</b>		<b>SHF X-RAY U15 X145</b>	
Calved: Feb. 21, 2010		P43088504	H/P/S/D: P
Selling: Full possession and 3/4 semen interest.			
<b>BMI\$</b> <b>23</b>	HHF ULYSSES P68 U15 ET		SHF PHOENIX M33 P68 (CHB)
<b>CEZ\$</b> <b>15</b>	P42945343		SHF GOVERNESS 236G M50
<b>BIIS</b> <b>21</b>	SHF MISS M326 T44 ET		KCF BENNETT 3008 M326 (CHB){HYF,IEF,DLF}
<b>CHBS</b> <b>29</b>	P42795921		SHF GOVERNESS 236G L64
<b>BW</b>	<b>WW</b>	<b>YW</b>	<b>MM</b>
5.5	57	88	20
<b>M&amp;G</b>	<b>SC</b>	<b>FAT</b>	<b>REA</b>
49	1.2	0.01	0.31
<b>MARB</b>			
0.25			
<b>CE Score</b>	<b>Act. BW</b>	<b>BW Ratio</b>	<b>Adj. WW</b>
1	100	111	737
<b>WW Ratio</b>	<b>Adj. YW</b>	<b>YW Ratio</b>	<b>Frame Score</b>
109	1202	106	6.4
<b>Adj. BF Ratio</b>	<b>Adj. REA Ratio</b>	<b>REA/cwt</b>	<b>Adj. MARB Ratio</b>
0.31-149	13.36-103	1.19	3.71
<b>MARB Ratio</b>	<b>Adj. SC (CM)</b>	<b>Age of Dam</b>	<b>Dam's Production WWR</b>
103	39.0	3	2-103
<b>YWR</b>	<b>BWR</b>	<b>WWR</b>	<b>YWR</b>
2-103	2-103	2-105	2-103

• A real meat wagon. Sired by Dustin Heeter's Ulysses bull, top end growth with a 109 and 106 ratio at weaning and yearling.

<b>31</b>		<b>SHF XL U36 X186</b>	
Calved: March 6, 2010		P43078207	H/P/S/D: P
Selling: Full possession and 3/4 semen interest.			
<b>BMI\$</b> <b>23</b>	SHF VOLTAIRE P68 U36 ET		SHF PHOENIX M33 P68 (CHB)
<b>CEZ\$</b> <b>15</b>	P42909930		SHF INTERSTATE D03 N29 {DOD}{IEF,DLF}
<b>BIIS</b> <b>20</b>	SHF MISS M326 T53 ET		KCF BENNETT 3008 M326 (CHB){DLF,HYF,IEF}
<b>CHBS</b> <b>30</b>	P42795942		SHF MISS 105A M01
<b>BW</b>	<b>WW</b>	<b>YW</b>	<b>MM</b>
4.9	63	101	18
<b>M&amp;G</b>	<b>SC</b>	<b>FAT</b>	<b>REA</b>
49	1.3	0.02	0.38
<b>MARB</b>			
0.13			
<b>CE Score</b>	<b>Act. BW</b>	<b>BW Ratio</b>	<b>Adj. WW</b>
1	96	107	724
<b>WW Ratio</b>	<b>Adj. YW</b>	<b>YW Ratio</b>	<b>Frame Score</b>
105	1189	105	5.6
<b>Adj. BF Ratio</b>	<b>Adj. REA Ratio</b>	<b>REA/cwt</b>	<b>Adj. MARB Ratio</b>
0.27-128	12.46-96	1.17	3.33
<b>MARB Ratio</b>	<b>Adj. SC (CM)</b>	<b>Age of Dam</b>	<b>Dam's Production WWR</b>
93	36.2	3	2-100
<b>YWR</b>	<b>BWR</b>	<b>WWR</b>	<b>YWR</b>
2-106	2-106	2-106	2-105

• XL is in the top 1% of the breed for WW EPD and top 2% of the breed for YW EPD. His cow family is the same as Exclusive, the Lot 2 bull in the sale.

<b>32</b>		<b>SHF EXTENSIVE R117 X04</b>	
Calved: Feb. 2, 2010		P43078119	H/P/S/D: P
Selling: Full possession and 3/4 semen interest.			
<b>BMI\$</b> <b>23</b>	SHF RIB EYE M326 R117 (CHB){IEF,HYF,DLF}		KCF BENNETT 3008 M326 (CHB){DLF,HYF,IEF}
<b>CEZ\$</b> <b>15</b>	P42584003		HVH MISS HUDSON 83K 8M
<b>BIIS</b> <b>21</b>	SHF PRINCESS 12P S94		HVH PRINCE F202 12P ET
<b>CHBS</b> <b>27</b>	P42693447		SHF LADY 512 K55
<b>BW</b>	<b>WW</b>	<b>YW</b>	<b>MM</b>
4.9	53	84	18
<b>M&amp;G</b>	<b>SC</b>	<b>FAT</b>	<b>REA</b>
44	1.2	0.01	0.18
<b>MARB</b>			
0.21			
<b>CE Score</b>	<b>Act. BW</b>	<b>BW Ratio</b>	<b>Adj. WW</b>
1	100	109	657
<b>WW Ratio</b>	<b>Adj. YW</b>	<b>YW Ratio</b>	<b>Frame Score</b>
97	1167	103	6.9
<b>Adj. BF Ratio</b>	<b>Adj. REA Ratio</b>	<b>REA/cwt</b>	<b>Adj. MARB Ratio</b>
0.23-110	14.17-110	1.22	4.03
<b>MARB Ratio</b>	<b>Adj. SC (CM)</b>	<b>Age of Dam</b>	<b>Dam's Production WWR</b>
112	34.1	3	3-101
<b>YWR</b>	<b>BWR</b>	<b>WWR</b>	<b>YWR</b>
3-95	3-101	3-95	3-96

• Ratioing over 110 for both REA and MARB, this growth bull can help you make some money in the feedyard.



# SANDHILL FARMS BULLS

33		SHF KELVIN T57 X18 ET							
Calved: Feb. 6, 2010		P43078200				H/P/S/D: P			
Selling: Full possession and 3/4 semen interest.									
<b>BMI\$</b> 29 <b>CEZ\$</b> 16 <b>BIIS</b> 27 <b>CHBS</b> 32	SHF TUG R117 T57 (CHB) P42795820				SHF RIB EYE M326 R117 (CHB){HYF,IEF,DLF}				
					SHF BOOMER P606 R80				
	SHF MISS M326 R50 (DLF,IEF) P42584186				KCF BENNETT 3008 M326 (CHB){DLF,IEF,HYF}				
				SHF LADY 512 K55					
<b>BW</b>	<b>WW</b>	<b>YW</b>	<b>MM</b>	<b>M&amp;G</b>	<b>SC</b>	<b>FAT</b>	<b>REA</b>	<b>MARB</b>	
4.1	62	91	18	49	1.7	0.03	0.27	0.35	
<b>CE Score</b>	<b>Act. BW</b>	<b>BW Ratio</b>	<b>Adj. WW</b>	<b>WW Ratio</b>	<b>Adj. YW</b>	<b>YW Ratio</b>	<b>Frame Score</b>		
1	95		640		1102		6.2		
<b>Adj. BF Ratio</b>	<b>Adj. REA Ratio</b>	<b>REA/cwt</b>	<b>Adj. MARB Ratio</b>	<b>MARB Ratio</b>	<b>Adj. SC (CM)</b>	<b>Age of Dam</b>	<b>Dam's Production WWR</b>	<b>YWR</b>	
0.14-75	12.23-95	1.12	3.48	98	37.1	4	0	0	0

• Kelvin has some very impressive breed Index numbers. Ranking in the top 1% of the breed for BMI\$, BIIS and CHBS. He is an ET bull sired by Tug, the Lot 1 bull in our first sale going to Upstream and out of a very good M326 daughter.

34		SHF EXTRACT S07 X182							
Calved: March 4, 2010		P43078203				H/P/S/D: P			
Selling: Full possession and 3/4 semen interest.									
<b>BMI\$</b> 18 <b>CEZ\$</b> 13 <b>BIIS</b> 15 <b>CHBS</b> 32	SHF STYLE 412T S07 ET P42705380				GK EXPLOSION 412T (SOD){IEF,DLF,HYF}				
					SHF INTERSTATE D03 J119				
	SHF RIB EYE R117 T139 P42795856				SHF RIB EYE M326 R117 (CHB){IEF,DLF,HYF}				
				SHF TARGET 634E N124					
<b>BW</b>	<b>WW</b>	<b>YW</b>	<b>MM</b>	<b>M&amp;G</b>	<b>SC</b>	<b>FAT</b>	<b>REA</b>	<b>MARB</b>	
5.8	62	99	19	49	0.8	0.01	0.35	0.23	
<b>CE Score</b>	<b>Act. BW</b>	<b>BW Ratio</b>	<b>Adj. WW</b>	<b>WW Ratio</b>	<b>Adj. YW</b>	<b>YW Ratio</b>	<b>Frame Score</b>		
1	92	102	755	111	1240	109	6.8		
<b>Adj. BF Ratio</b>	<b>Adj. REA Ratio</b>	<b>REA/cwt</b>	<b>Adj. MARB Ratio</b>	<b>MARB Ratio</b>	<b>Adj. SC (CM)</b>	<b>Age of Dam</b>	<b>Dam's Production WWR</b>	<b>YWR</b>	
0.27-127	14.03-109	1.25	4.22	118	35.2	2	2-105	2-108	2-104

• If you like top end ratios ranging from 109 to 118 for weaning, yearling, MARB and REA, Extract may be your bull. He is a large framed bull that is out of a very good Rib Eye daughter.

35		SHF EXTREME U36 X188							
Calved: March 5, 2010		P43078208				H/P/S/D: P			
Selling: Full possession and 3/4 semen interest.									
<b>BMI\$</b> 21 <b>CEZ\$</b> 13 <b>BIIS</b> 18 <b>CHBS</b> 31	SHF VOLTAIRE P68 U36 ET P42909930				SHF PHOENIX M33 P68 (CHB)				
					SHF INTERSTATE D03 N29 (DOD){DLF,IEF}				
	SHF RADAR R125 T24 ET P42795938				SHF RADAR M326 R125 (CHB){DLF,HYF,IEF}				
				HVH MISS HUDSON 83K 8M					
<b>BW</b>	<b>WW</b>	<b>YW</b>	<b>MM</b>	<b>M&amp;G</b>	<b>SC</b>	<b>FAT</b>	<b>REA</b>	<b>MARB</b>	
4.4	64	100	20	52	1.1	0.02	0.29	0.24	
<b>CE Score</b>	<b>Act. BW</b>	<b>BW Ratio</b>	<b>Adj. WW</b>	<b>WW Ratio</b>	<b>Adj. YW</b>	<b>YW Ratio</b>	<b>Frame Score</b>		
1	96	107	744	109	1243	110	6.8		
<b>Adj. BF Ratio</b>	<b>Adj. REA Ratio</b>	<b>REA/cwt</b>	<b>Adj. MARB Ratio</b>	<b>MARB Ratio</b>	<b>Adj. SC (CM)</b>	<b>Age of Dam</b>	<b>Dam's Production WWR</b>	<b>YWR</b>	
0.29-138	12.44-96	1.11	4.62	129	38.3	3	2-105	2-107	2-105

• Extreme has some impressive statistics: WW EPD of 64, top 1%, YW of 100, top 2% and an actual MARB ratio of 129. Couple that with his very good uddered Radar daughter dam that is then out of 8M, Rib Eye's dam. Extremely impressive.

36		SHF KARL S07 X184							
Calved: March 5, 2010		P43078205				H/P/S/D: P			
Selling: Full possession and 3/4 semen interest.									
<b>BMI\$</b> 15 <b>CEZ\$</b> 11 <b>BIIS</b> 12 <b>CHBS</b> 26	SHF STYLE 412T S07 ET P42705380				GK EXPLOSION 412T (SOD){HYF,IEF,DLF}				
					SHF INTERSTATE D03 J119				
	SHF RADAR R125 T61 P42795888				SHF RADAR M326 R125 (CHB){HYF,IEF,DLF}				
				SHF GOVERNESS 236G L102					
<b>BW</b>	<b>WW</b>	<b>YW</b>	<b>MM</b>	<b>M&amp;G</b>	<b>SC</b>	<b>FAT</b>	<b>REA</b>	<b>MARB</b>	
5.9	62	98	18	49	0.7	0.04	0.24	0.11	
<b>CE Score</b>	<b>Act. BW</b>	<b>BW Ratio</b>	<b>Adj. WW</b>	<b>WW Ratio</b>	<b>Adj. YW</b>	<b>YW Ratio</b>	<b>Frame Score</b>		
1	96	107	731	108	1201	106	6.3		
<b>Adj. BF Ratio</b>	<b>Adj. REA Ratio</b>	<b>REA/cwt</b>	<b>Adj. MARB Ratio</b>	<b>MARB Ratio</b>	<b>Adj. SC (CM)</b>	<b>Age of Dam</b>	<b>Dam's Production WWR</b>	<b>YWR</b>	
0.24-113	12.74-99	1.18	3.48	97	36.7	3	2-98	2-100	2-98

• Karl backs up his top growth EPDs with some impressive ratios at weaning and yearling. Cow family goes back to the dam of Marshal. This is the half-way point of the sale. We are going to donate the proceeds from this bull to Kansas State University Foundation. The money will be used toward the Stanley Stout Livestock Marketing and Learning Center.

37		SHF EXPEDITE U73 X190							
Calved: March 9, 2010		P43078211				H/P/S/D: P			
Selling: Full possession and 3/4 semen interest.									
<b>BMI\$</b> 17 <b>CEZ\$</b> 14 <b>BIIS</b> 16 <b>CHBS</b> 20	SHF ULYSSES R117 U73 P42894905				SHF RIB EYE M326 R117 (CHB){IEF,DLF,HYF}				
					SHF GOVERNESS 236G N112				
	SHF BOOMER P606 R42 (DLF,HYF,IEF) P42584165				PW VICTOR BOOMER P606 (SOD){IEF,DLF}				
				SHF GOV L75 N70					
<b>BW</b>	<b>WW</b>	<b>YW</b>	<b>MM</b>	<b>M&amp;G</b>	<b>SC</b>	<b>FAT</b>	<b>REA</b>	<b>MARB</b>	
3.1	46	74	26	49	1.0	0.01	0.34	0.03	
<b>CE Score</b>	<b>Act. BW</b>	<b>BW Ratio</b>	<b>Adj. WW</b>	<b>WW Ratio</b>	<b>Adj. YW</b>	<b>YW Ratio</b>	<b>Frame Score</b>		
1	91	98	682	100	1153	102	6.4		
<b>Adj. BF Ratio</b>	<b>Adj. REA Ratio</b>	<b>REA/cwt</b>	<b>Adj. MARB Ratio</b>	<b>MARB Ratio</b>	<b>Adj. SC (CM)</b>	<b>Age of Dam</b>	<b>Dam's Production WWR</b>	<b>YWR</b>	
0.19-90	13.5-104	1.28	2.84	79	33.9	5	4-102	4-108	3-106

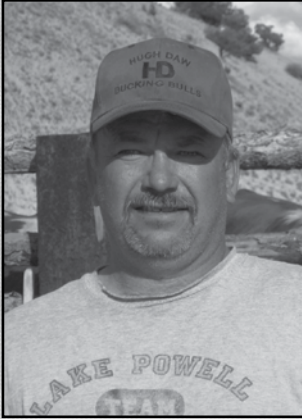
• The dam of Expedite is one of the most beautiful females we have on the place. He is sired by U73, now owned by the Monahan Ranch in Nebraska.



SHF BOOMER P606 R42 — Dam of Lot 37



# SANDHILL FARMS BULLS



**/EV Ranch, Rifle, Colo.,  
Clinton Burke- Herdsman**  
 "Using Sandhill Farms bulls at our ranch has helped us reach our goals of producing trouble free baldie steers and replacement heifers. The calving ease has been good and the demand for our black baldie replacement females is netting us premium dollars."

<b>38</b>	<b>SHF KENDALL T58 X30 ET</b>							
	Calved: Feb. 8, 2010	P43078253 H/P/S/D: P						
Selling: Full possession and 3/4 semen interest.								
<b>BMI\$</b> 26 <b>CEZ\$</b> 17 <b>BI\$</b> 24 <b>CHB\$</b> 29	SHF TREASURE R117 T58 {CHB} P42795823	SHF RIB EYE M326 R117 {CHB}{HYF,DLF,IEF} SHF QUEEN M33 R74						
	SHF PROGRESS T49 {IEF,DLF} P42795825	SHF PROGRESS P20 {CHB}{DLF,IEF,HYF} SHF QUEEN M33 R63						
<b>BW</b> 3.4	<b>WW</b> 54	<b>YW</b> 92	<b>MM</b> 26	<b>M&amp;G</b> 52	<b>SC</b> 1.7	<b>FAT</b> 0.01	<b>REA</b> 0.32	<b>MARB</b> 0.24
<b>CE Score</b> 1	<b>Act. BW</b> 98	<b>BW Ratio</b>	<b>Adj. WW</b> 682	<b>WW Ratio</b>	<b>Adj. YW</b> 1168	<b>YW Ratio</b>	<b>Frame Score</b> 6.0	
<b>Adj. BF Ratio</b> 0.17-91	<b>Adj. REA Ratio</b> 13.96-109	<b>REA/cwt</b> 1.21	<b>Adj. MARB Ratio</b> 3.71	<b>MARB Ratio</b> 104	<b>Adj. SC (CM)</b> 38.1	<b>Age of Dam</b> 2	<b>Dam's Production WWR</b> 2-118	<b>YWR</b> 2-121
								1-117

• Kendall ratioed 104 on MARB and 109 on REA. Combine this with being in the top 1% of the breed for BMI\$ and BI\$ and 2% for CHB\$, he will add value to his progeny.



**Tyler Buys 15 Heifers from John Loewen**

<b>39</b>	<b>SHF EXPAND R100 X62</b>							
	Calved: Feb. 11, 2010	P43078279 H/P/S/D: P						
Selling: Full possession and 3/4 semen interest.								
<b>BMI\$</b> 24 <b>CEZ\$</b> 16 <b>BI\$</b> 22 <b>CHB\$</b> 29	SHF TAHOE R117 T100 P42795891	SHF RIB EYE M326 R117 {CHB}{DLF,IEF,HYF} SHF LADY 512 L73 {DOD}						
	SHF REM TRACY 94K P05 {DOD} P42478880	REMITALL INTENSIFIER 94K {CHB} GERBER 121 TRACY 012K						
<b>BW</b> 4.3	<b>WW</b> 57	<b>YW</b> 94	<b>MM</b> 19	<b>M&amp;G</b> 47	<b>SC</b> 1.4	<b>FAT</b> -0.01	<b>REA</b> 0.30	<b>MARB</b> 0.15
<b>CE Score</b> 1	<b>Act. BW</b> 102	<b>BW Ratio</b> 108	<b>Adj. WW</b> 631	<b>WW Ratio</b> 93	<b>Adj. YW</b> 1136	<b>YW Ratio</b> 100	<b>Frame Score</b> 6.8	
<b>Adj. BF Ratio</b> 0.12-60	<b>Adj. REA Ratio</b> 12.81-99	<b>REA/cwt</b> 1.14	<b>Adj. MARB Ratio</b> 3.75	<b>MARB Ratio</b> 104	<b>Adj. SC (CM)</b> NA	<b>Age of Dam</b> 6	<b>Dam's Production WWR</b> 5-104	<b>YWR</b> 5-103

• Expand is a big growth bull out of P05. P05's cow family started from the Doug Gerber herd in Indiana.



**Lot 40 — SHF Exsert U38 X70**

<b>40</b>	<b>SHF EXSERT U38 X70</b>							
	Calved: Feb. 13, 2010	P43078285 H/P/S/D: P						
Selling: Full possession and 3/4 semen interest.								
<b>BMI\$</b> 22 <b>CEZ\$</b> 15 <b>BI\$</b> 19 <b>CHB\$</b> 29	SHF VISION R117 U38 {IEF,DLF} P42894861	SHF RIB EYE M326 R117 {CHB}{HYF,DLF,IEF} SHF MISS PROGRESS S03 ET						
	SHF PRINCESS 12P S88 P42693419	HVH PRINCE F202 12P ET SHF LADY 512 M100						
<b>BW</b> 4.2	<b>WW</b> 59	<b>YW</b> 95	<b>MM</b> 17	<b>M&amp;G</b> 46	<b>SC</b> 1.1	<b>FAT</b> -0.01	<b>REA</b> 0.70	<b>MARB</b> 0.02
<b>CE Score</b> 1	<b>Act. BW</b> 101	<b>BW Ratio</b> 110	<b>Adj. WW</b> 671	<b>WW Ratio</b> 99	<b>Adj. YW</b> 1189	<b>YW Ratio</b> 105	<b>Frame Score</b> 6.6	
<b>Adj. BF Ratio</b> 0.18-84	<b>Adj. REA Ratio</b> 15.84-123	<b>REA/cwt</b> 1.38	<b>Adj. MARB Ratio</b> 2.76	<b>MARB Ratio</b> 77	<b>Adj. SC (CM)</b> NA	<b>Age of Dam</b> 3	<b>Dam's Production WWR</b> 3-101	<b>YWR</b> 3-98
								3-102

• Exsert has one of the largest REAs in the sale. At almost 16 in. and ratioed 125, this explains him being in the top 1% of the breed for REA EPD.



# SANDHILL FARMS BULLS

41 SHF EXPORT R117 X71									
Calved: Feb. 13, 2010 43078286 H/P/S/D: H									
Selling: Full possession and 3/4 semen interest.									
<b>BMI\$</b> 25	KCF BENNETT 3008 M326 (CHB){DLF,IEF,HYF}								
<b>CEZ\$</b> 17	SHF RIB EYE M326 R117 (CHB){HYF,DLF,IEF}								
<b>BI\$</b> 23	P42584003 HVH MISS HUDSON 83K 8M								
<b>CHB\$</b> 28	SHF MARSHAL 236G M33 (SOD,CHB)								
SHF QUEEN M33 S72 P42693418 SHF TARGET 634E N04									
BW	WW	YW	MM	M&G	SC	FAT	REA	MARB	
3.2	53	84	20	46	1.4	-0.01	0.25	0.19	
CE Score	Act. BW	BW Ratio	Adj. WW	WW Ratio	Adj. YW	YW Ratio	Frame Score		
1	95	104	700	103	1195	105	6.6		
Adj. BF Ratio	Adj. REA Ratio	REA/cwt	Adj. MARB Ratio	MARB Ratio	Adj. SC (CM)	Age of Dam	Dam's Production WWR	YWR	
0.23-108	12.04-93	1.04	3.54	99	NA	3	3-93	3-98	3-99

- Export is another good Rib Eye son that has good growth potential. Ranks in the top 2% or 3% for three out of four breed Indexes.
- Dehorned

42 SHF EXPO R117 X142									
Calved: Feb. 20, 2010 P43078163 H/P/S/D: P									
Selling: Full possession and 3/4 semen interest.									
<b>BMI\$</b> 23	KCF BENNETT 3008 M326 (CHB){HYF,DLF,IEF}								
<b>CEZ\$</b> 15	SHF RIB EYE M326 R117 (CHB){IEF,HYF,DLF}								
<b>BI\$</b> 21	P42584003 HVH MISS HUDSON 83K 8M								
<b>CHB\$</b> 27	SHF MARSHAL 236G M33 (SOD,CHB)								
SHF QUEEN M33 S75 P42693398 SHF GOVERNESS 236G N98									
BW	WW	YW	MM	M&G	SC	FAT	REA	MARB	
4.7	54	85	20	47	1.3	-0.01	0.32	0.12	
CE Score	Act. BW	BW Ratio	Adj. WW	WW Ratio	Adj. YW	YW Ratio	Frame Score		
1	103	112	644	95	1108	98	6.2		
Adj. BF Ratio	Adj. REA Ratio	REA/cwt	Adj. MARB Ratio	MARB Ratio	Adj. SC (CM)	Age of Dam	Dam's Production WWR	YWR	
0.18-86	12.74-99	1.21	2.89	81	32.1	3	3-97	3-95	3-99

- Expo is out of one of the prettiest cows we have. She is of age to be in the sale, but has been pregnancy checked with a bull calf. Expo has some pretty impressive breed Indexes.

43 SHF KILO P20 X124									
Calved: Feb. 17, 2010 P43078145 H/P/S/D: P									
Selling: Full possession and 3/4 semen interest.									
<b>BMI\$</b> 21	FELTONS LEGEND 242 (SOD,CHB){HYF}								
<b>CEZ\$</b> 20	SHF PROGRESS P20 (CHB){IEF,HYF,DLF}								
<b>BI\$</b> 19	P42481042 SHF INTRSTATE D03 G06 ET								
<b>CHB\$</b> 25	SHF MARSHAL 236G M33 (SOD,CHB)								
SHF MISS M33 U125 P42894589 SHF GOVERNESS 236G R135									
BW	WW	YW	MM	M&G	SC	FAT	REA	MARB	
0.0	41	65	22	43	0.8	0.01	0.17	0.31	
CE Score	Act. BW	BW Ratio	Adj. WW	WW Ratio	Adj. YW	YW Ratio	Frame Score		
1	71	84	656	97	1137	100	5.6		
Adj. BF Ratio	Adj. REA Ratio	REA/cwt	Adj. MARB Ratio	MARB Ratio	Adj. SC (CM)	Age of Dam	Dam's Production WWR	YWR	
0.26-124	13.1-101	1.27	5.02	140	37.1	1	1-84	1-97	1-100

- Starting out life with a 71 lb. BW, Kilo ranks in the top 3% of the breed for CEZ\$. Also note, the 140 ratio on MARB with an above average REA. Pretty neat combination.



Lot 43 — SHF Kilo P20 X124

44 SHF KERNEL R117 X38									
Calved: Feb. 9, 2010 P43078259 H/P/S/D: P									
Selling: Full possession and 3/4 semen interest.									
<b>BMI\$</b> 25	KCF BENNETT 3008 M326 (CHB){IEF,HYF,DLF}								
<b>CEZ\$</b> 21	SHF RIB EYE M326 R117 (CHB){HYF,DLF,IEF}								
<b>BI\$</b> 22	P42584003 HVH MISS HUDSON 83K 8M								
<b>CHB\$</b> 29	SHF PROGRESS P20 (CHB){HYF,DLF,IEF}								
SHF PROGRESS P20 U06 ET P42894338 SHF MISS 105A M01									
BW	WW	YW	MM	M&G	SC	FAT	REA	MARB	
0.0	50	75	19	44	1.1	0.01	0.27	0.30	
CE Score	Act. BW	BW Ratio	Adj. WW	WW Ratio	Adj. YW	YW Ratio	Frame Score		
1	78	92	670	99	1120	99	4.8		
Adj. BF Ratio	Adj. REA Ratio	REA/cwt	Adj. MARB Ratio	MARB Ratio	Adj. SC (CM)	Age of Dam	Dam's Production WWR	YWR	
0.21-102	12.48-97	1.2	3.94	110	39.9	2	1-92	1-99	1-99

- Kernel ranks in the top 1% of the breed for CEZ\$ and top 2-3% for the other three breed Indexes. His dam is a very good Progress daughter coming from the same cow family as Lot 2, Exclusive.



Taking Advantage of Brooke



# SANDHILL FARMS BULLS



Lot 45 — SHF Expression U38 X21

<b>45</b>		<b>SHF EXPRESSION U38 X21</b>	
Calved: Feb. 7, 2010		P43078231	H/P/S/D: P
Selling: Full possession and 3/4 semen interest.			
<b>BMI\$</b> 24	SHF VISION R117 U38 (DLF,IEF) P42894861	SHF RIB EYE M326 R117 (CHB)(IEF,HYF,DLF)	
<b>CEZ\$</b> 19		SHF MISS PROGRESS S03 ET	
<b>BIIS</b> 21		SHF MARSHAL 236G M33 (SOD,CHB)	
<b>CHBS</b> 26	SHF QUEEN M33 S77 P42693417	SHF TARGET 634E N05 (DOD)	
<b>BW</b> 0.7	<b>WW</b> 49	<b>YW</b> 67	<b>MM</b> 21
<b>M&amp;G</b> 45	<b>SC</b> 1.0	<b>FAT</b> 0.01	<b>REA</b> 0.44
<b>MARB</b> 0.21			
<b>CE Score</b> 1	<b>Act. BW</b> 81	<b>BW Ratio</b> 88	<b>Adj. WW</b> 637
<b>WW Ratio</b> 94	<b>Adj. YW</b> 1050	<b>YW Ratio</b> 93	<b>Frame Score</b> 5.2
<b>Adj. BF Ratio</b> 0.26-126	<b>Adj. REA Ratio</b> 13.75-106	<b>REA/cwt</b> 1.33	<b>Adj. MARB Ratio</b> 4.03
<b>MARB Ratio</b> 112	<b>Adj. SC (CM)</b> 33.8	<b>Age of Dam</b> 3	<b>Dam's Production WWR</b> 3-102
	<b>BWR</b> 3-98	<b>WWR</b> 3-102	<b>YWR</b> 3-100

• Expression is an attractive son of Vision. Note the 0.7 BW EPD and the top carcass measurements, ratioing 112 on MARB and 106 on REA. Dam sells as Lot 85.



Lot 46 — SHF Kraft U38 X123

<b>46</b>		<b>SHF KRAFT U38 X123</b>	
Calved: Feb. 17, 2010		P43078144	H/P/S/D: P
Selling: Full possession and 3/4 semen interest.			
<b>BMI\$</b> 22	SHF VISION R117 U38 (DLF,IEF) P42894861	SHF RIB EYE M326 R117 (CHB)(IEF,HYF,DLF)	
<b>CEZ\$</b> 16		SHF MISS PROGRESS S03 ET	
<b>BIIS</b> 20		SHF SOLDIER 13P S66	
<b>CHBS</b> 27	SHF SOLDIER S66 U152 P42894670	SHF BOOMER P606 R80	
<b>BW</b> 1.8	<b>WW</b> 51	<b>YW</b> 75	<b>MM</b> 21
<b>M&amp;G</b> 46	<b>SC</b> 1.0	<b>FAT</b> 0.02	<b>REA</b> 0.31
<b>MARB</b> 0.29			
<b>CE Score</b> 1	<b>Act. BW</b> 80	<b>BW Ratio</b> 95	<b>Adj. WW</b> 670
<b>WW Ratio</b> 99	<b>Adj. YW</b> 1120	<b>YW Ratio</b> 99	<b>Frame Score</b> 5.9
<b>Adj. BF Ratio</b> 0.17-80	<b>Adj. REA Ratio</b> 12.3-95	<b>REA/cwt</b> 1.22	<b>Adj. MARB Ratio</b> 4.14
<b>MARB Ratio</b> 115	<b>Adj. SC (CM)</b> 38.2	<b>Age of Dam</b> 1	<b>Dam's Production WWR</b> 1-99
	<b>BWR</b> 1-95	<b>WWR</b> 1-99	<b>YWR</b> 1-99

• Kraft has a BW EPD of 1.8 and YW EPD of 75. He also is in the top 5% of the breed for three of four Indexes. The cow family is the same as herd bulls Tug and Marshall.

## SANDHILL FARMS

Because of data collected on each animal in a pedigree, EPDs and \$ indexes are superior in predicting an animal's genetic ability compared to an animal's actual measurements.

We have collected whole herd performance data since our beginning with registered cattle in 1979 and ultrasound data on all our cattle since 1994.

<b>47</b>		<b>SHF KEYSTONE U38 X17</b>	
Calved: Feb. 6, 2010		P43078189	H/P/S/D: P
Selling: Full possession and 3/4 semen interest.			
<b>BMI\$</b> 24	SHF VISION R117 U38 (DLF,IEF) P42894861	SHF RIB EYE M326 R117 (CHB)(IEF,DLF,HYF)	
<b>CEZ\$</b> 19		SHF MISS PROGRESS S03 ET	
<b>BIIS</b> 21		SHF PROGRESS P20 (CHB)(DLF,HYF,IEF)	
<b>CHBS</b> 29	SHF PROGRESS P20 U70 P42894901	SHF PRINCESS 12P S94	
<b>BW</b> 0.8	<b>WW</b> 51	<b>YW</b> 75	<b>MM</b> 21
<b>M&amp;G</b> 46	<b>SC</b> 1.0	<b>FAT</b> 0.01	<b>REA</b> 0.19
<b>MARB</b> 0.37			
<b>CE Score</b> 2	<b>Act. BW</b> 84	<b>BW Ratio</b> 99	<b>Adj. WW</b> 696
<b>WW Ratio</b> 102	<b>Adj. YW</b> 1146	<b>YW Ratio</b> 101	<b>Frame Score</b> 5.5
<b>Adj. BF Ratio</b> 0.18-87	<b>Adj. REA Ratio</b> 12.83-99	<b>REA/cwt</b> 1.2	<b>Adj. MARB Ratio</b> 4.8
<b>MARB Ratio</b> 134	<b>Adj. SC (CM)</b> 36.8	<b>Age of Dam</b> 1	<b>Dam's Production WWR</b> 1-102
	<b>BWR</b> 1-99	<b>WWR</b> 1-102	<b>YWR</b> 1-101

• Keystone combines a 134 ratio on MARB and calving ease potential that ranks him in the top 5% of the breed. Grandam sells as Lot 82.



# SANDHILL FARMS BULLS

48		SHF KELSON T56 X02 ET						
Calved: Jan. 24, 2010		P43078117 H/P/S/D: P						
Selling: Full possession and 3/4 semen interest.								
<b>BMI\$</b> 18	SHF TOPEKA 57G T56 ET (IEF,DLF) P42811830		RU 20X BOULDER 57G (CHB)					
<b>CEZ\$</b> 11			SHF POSTIVE MISS 73C M15					
<b>BIIS</b> 16			REMITALL PATRIOT ET 13P (CHB)					
<b>CHBS</b> 25	REMITALL SALLY ET 96S (IEF,DLF) P42964687		REMITALL SALLY ET 161H					
BW	WW	YW	MM	M&G	SC	FAT	REA	MARB
5.1	55	95	14	42	0.9	0.01	0.29	0.09
CE Score	Act. BW	BW Ratio	Adj. WW	WW Ratio	Adj. YW	YW Ratio	Frame Score	
1	72		592		993		5.3	
Adj. BF Ratio	Adj. REA Ratio	REA/cwt	Adj. MARB Ratio	MARB Ratio	Adj. SC (CM)	Age of Dam	Dam's Production WWR	YWR
0.27-145	11.93-93	1.17	3.55	100	34.7	3	2-90	2-89

• An embryo bull that had an actual BW of 72 lb. His dam is a very attractive cow that was our pick from the Remittal dispersal in Canada.

49		SHF KOFFEE T100 X107						
Calved: Feb. 16, 2010		P43078130 H/P/S/D: P						
Selling: Full possession and 3/4 semen interest.								
<b>BMI\$</b> 19	SHF TAHOE R117 T100 P42795891		SHF RIB EYE M326 R117 (CHB){HYF,DLF,IEF}					
<b>CEZ\$</b> 14			SHF LADY 512 L73 (DOD)					
<b>BIIS</b> 17			HVH PRINCE F202 12P ET					
<b>CHBS</b> 24	SHF PRINCESS 12P S121 P42693431		SHF LACTATE F202 20X L121					
BW	WW	YW	MM	M&G	SC	FAT	REA	MARB
5.4	60	90	15	45	1.1	-0.01	0.32	-0.12
CE Score	Act. BW	BW Ratio	Adj. WW	WW Ratio	Adj. YW	YW Ratio	Frame Score	
1	95	104	656	97	1093	96	5.9	
Adj. BF Ratio	Adj. REA Ratio	REA/cwt	Adj. MARB Ratio	MARB Ratio	Adj. SC (CM)	Age of Dam	Dam's Production WWR	YWR
0.19-89	11.08-86	1.06	2.96	82	34.5	3	3-97	3-92

• Koffee is a son of Tahoe. He ranks in the top 3% for WW EPD. His dam is a very feminine, tight uddered female.

50		SHF KEENAN R117 X202						
Calved: March 18, 2010		P43078223 H/P/S/D: P						
Selling: Full possession and 3/4 semen interest.								
<b>BMI\$</b> 25	SHF RIB EYE M326 R117 (CHB){HYF,DLF,IEF} P42584003		KCF BENNETT 3008 M326 (CHB){IEF,HYF,DLF}					
<b>CEZ\$</b> 21			HVH MISS HUDSON 83K 8M					
<b>BIIS</b> 22			SHF PROGRESS P20 (CHB){IEF,DLF,HYF}					
<b>CHBS</b> 26	SHF PROGRESS P20 U35 P42894852		SHF PATRIOT 13P S39					
BW	WW	YW	MM	M&G	SC	FAT	REA	MARB
-0.9	45	72	21	44	1.2	-0.01	0.17	0.21
CE Score	Act. BW	BW Ratio	Adj. WW	WW Ratio	Adj. YW	YW Ratio	Frame Score	
1	71	83	650	96	1122	99	5.3	
Adj. BF Ratio	Adj. REA Ratio	REA/cwt	Adj. MARB Ratio	MARB Ratio	Adj. SC (CM)	Age of Dam	Dam's Production WWR	YWR
0.19-93	12.14-94	1.29	2.43	68	35.3	2	1-83	1-96

• Combines some pretty top genetics with Rib Eye and Progress. He has a negative BW EPD and is in the top 1% of the breed for CEZ\$. Grandam sells as Lot 86.

51		SHF KADIN 3767 X90						
Calved: Feb. 14, 2010		P43078301 H/P/S/D: P						
Selling: Full possession and 3/4 semen interest.								
<b>BMI\$</b> 22	R 2ND REVOLUTION 2767 (DLF,IEF) P42817015		MSU TCF REVOLUTION 4R (CHB){DLF,HYF,IEF}					
<b>CEZ\$</b> 17			HR MISS PUCKSTER 51 (DOD){DLF,IEF}					
<b>BIIS</b> 18			SHF RIB EYE M326 R117 (CHB){DLF,IEF,HYF}					
<b>CHBS</b> 32	SHF RIB EYE R117 U27 P42894791		SHF QUEEN M33 S77					
BW	WW	YW	MM	M&G	SC	FAT	REA	MARB
3.2	62	100	20	51	1.1	0.00	0.68	0.08
CE Score	Act. BW	BW Ratio	Adj. WW	WW Ratio	Adj. YW	YW Ratio	Frame Score	
1	88	103	723	106	1223	108	6.1	
Adj. BF Ratio	Adj. REA Ratio	REA/cwt	Adj. MARB Ratio	MARB Ratio	Adj. SC (CM)	Age of Dam	Dam's Production WWR	YWR
0.17-79	15.15-117	1.36	2.79	78	NA	2	1-103	1-106

• Kadin comes in with some impressive growth and REA EPDs. He ranks in the top 1-2% for both traits. He is out of a Rib Eye daughter whose dam sells as Lot 79.

52		SHF KALEB R117 X204						
Calved: March 19, 2010		P43078225 H/P/S/D: P						
Selling: Full possession and 3/4 semen interest.								
<b>BMI\$</b> 24	SHF RIB EYE M326 R117 (CHB){DLF,HYF,IEF} P42584003		KCF BENNETT 3008 M326 (CHB){DLF,HYF,IEF}					
<b>CEZ\$</b> 16			HVH MISS HUDSON 83K 8M					
<b>BIIS</b> 21			SHF MARSHAL 236G M33 (SOD,CHB)					
<b>CHBS</b> 27	SHF QUEEN M33 S68 P42693399		SHF GOVERNESS 236G N97 (DOD)					
BW	WW	YW	MM	M&G	SC	FAT	REA	MARB
3.7	53	84	21	47	1.3	-0.01	0.32	0.15
CE Score	Act. BW	BW Ratio	Adj. WW	WW Ratio	Adj. YW	YW Ratio	Frame Score	
1	92	100	687	101	1197	106	5.5	
Adj. BF Ratio	Adj. REA Ratio	REA/cwt	Adj. MARB Ratio	MARB Ratio	Adj. SC (CM)	Age of Dam	Dam's Production WWR	YWR
0.2-98	12.35-96	1.18	3.14	87	38.5	4	3-95	3-99

• Kaleb is a very good Rib Eye son. He has a YW wt. ratio of 106 to go along with his top end breed Indexes.



National Western Stock Show



# SANDHILL FARMS BULLS

<b>53 SHF EXPEDITION 502R X40</b>									
Calved: Feb. 14, 2010 P43078261 H/P/S/D: P									
Selling: Full possession and 3/4 semen interest.									
<b>BMI\$</b> 26	HUTH FULL HOUSE N003								
<b>CEZ\$</b> 16	PCR 286 MR ADVISOR 502R {HYF,IEF,DLF} P42620083								
<b>BIIS</b> 22	PCR JACKLYN NIKOLE 344N {IEF,DLF}								
<b>CHB\$</b> 36	KCF BENNETT 3008 M326 {CHB}{HYF,DLF,IEF}								
	SHF MISS M326 R76 P42584254								
	SHF INTERSTATE D03 G19								
<b>BW</b> 4.5	<b>WW</b> 62	<b>YW</b> 100	<b>MM</b> 17	<b>M&amp;G</b> 48	<b>SC</b> 1.2	<b>FAT</b> -0.03	<b>REA</b> 0.56	<b>MARB</b> 0.24	
<b>CE Score</b> 1	<b>Act. BW</b> 75	<b>BW Ratio</b>	<b>Adj. WW</b> 587	<b>WW Ratio</b>	<b>Adj. YW</b> 1073	<b>YW Ratio</b>	<b>Frame Score</b> 6.1		
<b>Adj. BF Ratio</b>	<b>Adj. REA Ratio</b>	<b>REA/cwt</b>	<b>Adj. MARB Ratio</b>	<b>MARB Ratio</b>	<b>Adj. SC (CM)</b>	<b>Age of Dam</b>	<b>Dam's Production WWR</b>	<b>YWR</b>	
0.15-	12.15-	1.16	4.34	36.3	4	5-106	5-102	4-100	

• Expedition has some very good growth numbers to go along with his breed leading Indexes. This bull is a twin, therefore there are no ratios generated.

<b>54 SHF EXTINGUISH R117 X91</b>									
Calved: Feb. 16, 2010 P43078302 H/P/S/D: P									
Selling: Full possession and 3/4 semen interest.									
<b>BMI\$</b> 25	KCF BENNETT 3008 M326 {CHB}{DLF,IEF,HYF}								
<b>CEZ\$</b> 19	SHF RIB EYE M326 R117 {CHB}{DLF,HYF,IEF} P42584003								
<b>BIIS</b> 24	HVH MISS HUDSON 83K 8M								
<b>CHB\$</b> 22	SHF MARSHAL 236G M33 {SOD,CHB}								
	SHF QUEEN M33 T129 P42795845								
	SHF MISS M82 P74 {DOD}								
<b>BW</b> 1.5	<b>WW</b> 44	<b>YW</b> 67	<b>MM</b> 20	<b>M&amp;G</b> 42	<b>SC</b> 1.4	<b>FAT</b> -0.01	<b>REA</b> 0.23	<b>MARB</b> 0.13	
<b>CE Score</b> 1	<b>Act. BW</b> 83	<b>BW Ratio</b> 92	<b>Adj. WW</b> 639	<b>WW Ratio</b> 94	<b>Adj. YW</b> 1090	<b>YW Ratio</b> 96	<b>Frame Score</b> 6.1		
<b>Adj. BF Ratio</b>	<b>Adj. REA Ratio</b>	<b>REA/cwt</b>	<b>Adj. MARB Ratio</b>	<b>MARB Ratio</b>	<b>Adj. SC (CM)</b>	<b>Age of Dam</b>	<b>Dam's Production WWR</b>	<b>YWR</b>	
0.18-85	13.58-105	1.32	2.92	81	NA	2	2-87	2-94	2-95

• This Rib Eye son is out of a very nice Marshal daughter. Notice he is in the top 5% for CEZ\$ and 2% for BMI\$ and BIIS.



Lot 55 — SHF Expectation U73 X179

<b>55 SHF EXPECTATION U73 X179</b>									
Calved: March 4, 2010 P43078199 H/P/S/D: P									
Selling: Full possession and 3/4 semen interest.									
<b>BMI\$</b> 25	SHF RIB EYE M326 R117 {CHB}{DLF,HYF,IEF}								
<b>CEZ\$</b> 18	SHF ULYSSES R117 U73 P42894905								
<b>BIIS</b> 24	SHF GOVERNESS 236G N112								
<b>CHB\$</b> 25	KCF BENNETT 3008 M326 {CHB}{IEF,DLF,HYF}								
	SHF MISS M326 R120 {DLF,IEF} P42584008								
	SHF TARGET 634E N126								
<b>BW</b> 2.6	<b>WW</b> 47	<b>YW</b> 73	<b>MM</b> 19	<b>M&amp;G</b> 42	<b>SC</b> 1.4	<b>FAT</b> -0.02	<b>REA</b> 0.14	<b>MARB</b> 0.15	
<b>CE Score</b> 1	<b>Act. BW</b> 88	<b>BW Ratio</b> 95	<b>Adj. WW</b> 661	<b>WW Ratio</b> 97	<b>Adj. YW</b> 1107	<b>YW Ratio</b> 98	<b>Frame Score</b> 6.1		
<b>Adj. BF Ratio</b>	<b>Adj. REA Ratio</b>	<b>REA/cwt</b>	<b>Adj. MARB Ratio</b>	<b>MARB Ratio</b>	<b>Adj. SC (CM)</b>	<b>Age of Dam</b>	<b>Dam's Production WWR</b>	<b>YWR</b>	
0.18-84	11.13-86	1.09	3.48	97	35.8	4	4-97	4-102	4-104

• Another son of SHF Ulysses. His dam is an M326 daughter that we flushed and have daughters in production. Top 1-2% for BMI\$ and BIIS.



Sale Day 2010

<b>56 SHF KAHN U73 X195</b>									
Calved: March 14, 2010 P43078215 H/P/S/D: P									
Selling: Full possession and 3/4 semen interest.									
<b>BMI\$</b> 20	SHF RIB EYE M326 R117 {CHB}{IEF,HYF,DLF}								
<b>CEZ\$</b> 17	SHF ULYSSES R117 U73 P42894905								
<b>BIIS</b> 19	SHF GOVERNESS 236G N112								
<b>CHB\$</b> 19	SHF MARSHAL 236G M33 {SOD,CHB}								
	SHF QUEEN M33 R47 P42584179								
	DS 219U VICKY 9D								
<b>BW</b> 2.1	<b>WW</b> 39	<b>YW</b> 60	<b>MM</b> 20	<b>M&amp;G</b> 40	<b>SC</b> 1.0	<b>FAT</b> -0.02	<b>REA</b> 0.07	<b>MARB</b> 0.07	
<b>CE Score</b> 1	<b>Act. BW</b> 87	<b>BW Ratio</b> 93	<b>Adj. WW</b> 614	<b>WW Ratio</b> 90	<b>Adj. YW</b> 1036	<b>YW Ratio</b> 91	<b>Frame Score</b> 6.2		
<b>Adj. BF Ratio</b>	<b>Adj. REA Ratio</b>	<b>REA/cwt</b>	<b>Adj. MARB Ratio</b>	<b>MARB Ratio</b>	<b>Adj. SC (CM)</b>	<b>Age of Dam</b>	<b>Dam's Production WWR</b>	<b>YWR</b>	
0.16-77	11.38-88	1.22	3.26	91	33.0	5	4-111	4-100	4-100

• A Rib Eye grandson that is also a double bred Governor. Kahn has a good Calving Ease Direct and BW EPD.



# SANDHILL FARMS BULLS

<b>57</b>	<b>SHF EXPOUND R117 X20</b>							
	Calved: Feb. 7, 2010 P43078220 H/P/S/D: P							
Selling: Full possession and 3/4 semen interest.								
<b>BMI\$</b> 25 <b>CEZ\$</b> 17 <b>BI\$</b> 24 <b>CHB\$</b> 27	SHF RIB EYE M326 R117 (CHB){DLF,HYF,IEF} P42584003	KCF BENNETT 3008 M326 (CHB){DLF,HYF,IEF} HVH MISS HUDSON 83K 8M						
	SHF GOVERNESS 236G S73 P42693452	REMITALL GOVERNOR 236G (SOD,CHB) SHF GOVERNESS 236G J58 (DOD)						
<b>BW</b> 3.5	<b>WW</b> 48	<b>YW</b> 69	<b>MM</b> 20	<b>M&amp;G</b> 44	<b>SC</b> 1.2	<b>FAT</b> -0.02	<b>REA</b> 0.45	<b>MARB</b> 0.21
<b>CE Score</b> 1	<b>Act. BW</b> 91	<b>BW Ratio</b> 99	<b>Adj. WW</b> 641	<b>WW Ratio</b> 94	<b>Adj. YW</b> 1085	<b>YW Ratio</b> 96	<b>Frame Score</b> 5.0	
<b>Adj. BF Ratio</b> 0.28-136	<b>Adj. REA Ratio</b> 15.05-116	<b>REA/cwt</b> 1.41	<b>Adj. MARB</b> 3.65	<b>MARB Ratio</b> 102	<b>Adj. SC (CM)</b> 38.3	<b>Age of Dam</b> 3	<b>Dam's Production</b> BWR WWR	<b>YWR</b> 3-97

- Expond comes here having a 102 and 116 ratio on MARB and REA. He also has a CHB\$ and BI\$ Index in the top 1-2%.



Feeding Hay

<b>58</b>	<b>SHF KIRBY U73 X219</b>							
	Calved: April 6, 2010 P43078241 H/P/S/D: P							
Selling: Full possession and 3/4 semen interest.								
<b>BMI\$</b> 21 <b>CEZ\$</b> 14 <b>BI\$</b> 20 <b>CHB\$</b> 22	SHF ULYSSES R117 U73 P42894905	SHF RIB EYE M326 R117 (CHB){HYF,DLF,IEF} SHF GOVERNESS 236G N112						
	SHF BOOMER P606 R80 P42584260	PW VICTOR BOOMER P606 (SOD){IEF,DLF} SHF LADY 512 H49						
<b>BW</b> 3.8	<b>WW</b> 50	<b>YW</b> 72	<b>MM</b> 22	<b>M&amp;G</b> 47	<b>SC</b> 1.2	<b>FAT</b> 0.02	<b>REA</b> 0.31	<b>MARB</b> 0.14
<b>CE Score</b> 1	<b>Act. BW</b> 95	<b>BW Ratio</b> 98	<b>Adj. WW</b> 681	<b>WW Ratio</b> 100	<b>Adj. YW</b> 1097	<b>YW Ratio</b> 100	<b>Frame Score</b> 5.8	
<b>Adj. BF Ratio</b> 0.2-100	<b>Adj. REA Ratio</b> 14.23-100	<b>REA/cwt</b> 1.55	<b>Adj. MARB</b> 3.45	<b>MARB Ratio</b> 100	<b>Adj. SC (CM)</b> 36.8	<b>Age of Dam</b> 5	<b>Dam's Production</b> BWR WWR	<b>YWR</b> 4-108 3-101

- Kirby is a maternal brother to herd bull Tug. Tug is working well in the Upstream herd. Kirby has some nice balanced EPDs and Indexes. He is ratioed as an individual, therefore ratios all average at 100.

<b>59</b>	<b>SHF EXCEED U38 X84</b>							
	Calved: Feb. 14, 2010 P43078296 H/P/S/D: P							
Selling: Full possession and 3/4 semen interest.								
<b>BMI\$</b> 23 <b>CEZ\$</b> 17 <b>BI\$</b> 22 <b>CHB\$</b> 25	SHF VISION R117 U38 (IEF,DLF) P42894861	SHF RIB EYE M326 R117 (CHB){IEF,DLF,HYF} SHF MISS PROGRESS S03 ET						
	SHF LADY 512 H71 P41028679	MM RSM STOCKMASTER 512 (SOD,CHB){IEF,HYF,DLF} SHF MISS KEYNOTE 20X E09						
<b>BW</b> 2.7	<b>WW</b> 46	<b>YW</b> 72	<b>MM</b> 17	<b>M&amp;G</b> 40	<b>SC</b> 1.1	<b>FAT</b> -0.01	<b>REA</b> 0.23	<b>MARB</b> 0.22
<b>CE Score</b> 1	<b>Act. BW</b> 91	<b>BW Ratio</b> 101	<b>Adj. WW</b> 646	<b>WW Ratio</b> 95	<b>Adj. YW</b> 1074	<b>YW Ratio</b> 95	<b>Frame Score</b> 6.1	
<b>Adj. BF Ratio</b> 0.19-89	<b>Adj. REA Ratio</b> 12.35-96	<b>REA/cwt</b> 1.23	<b>Adj. MARB</b> 3.55	<b>MARB Ratio</b> 99	<b>Adj. SC (CM)</b> NA	<b>Age of Dam</b> 11	<b>Dam's Production</b> BWR WWR	<b>YWR</b> 11-101 11-102 8-100

- Exceed is a Vision son out of a long time good Stockmaster 512 daughter. We have flushed this cow in the past. Exceed ranks in the top of the breed for BMI\$ and BI\$.

<b>60</b>	<b>SHF EXPONENT U38 X89</b>							
	Calved: Feb. 14, 2010 P43078300 H/P/S/D: P							
Selling: Full possession and 3/4 semen interest.								
<b>BMI\$</b> 24 <b>CEZ\$</b> 16 <b>BI\$</b> 22 <b>CHB\$</b> 25	SHF VISION R117 U38 (DLF,IEF) P42894861	SHF RIB EYE M326 R117 (CHB){IEF,HYF,DLF} SHF MISS PROGRESS S03 ET						
	SHF PATRIOT 13P S65 P42731421	REMITALL PATRIOT ET 13P (CHB) SHF GOVERNESS 236G L102						
<b>BW</b> 2.3	<b>WW</b> 50	<b>YW</b> 78	<b>MM</b> 20	<b>M&amp;G</b> 46	<b>SC</b> 1.3	<b>FAT</b> 0.01	<b>REA</b> 0.25	<b>MARB</b> 0.21
<b>CE Score</b> 1	<b>Act. BW</b> 91	<b>BW Ratio</b> 99	<b>Adj. WW</b> 632	<b>WW Ratio</b> 93	<b>Adj. YW</b> 1126	<b>YW Ratio</b> 99	<b>Frame Score</b> 5.8	
<b>Adj. BF Ratio</b> 0.2-94	<b>Adj. REA Ratio</b> 12.85-99	<b>REA/cwt</b> 1.19	<b>Adj. MARB</b> 3.65	<b>MARB Ratio</b> 102	<b>Adj. SC (CM)</b> NA	<b>Age of Dam</b> 3	<b>Dam's Production</b> BWR WWR	<b>YWR</b> 3-94 2-96

- Exponent is a Vision son that is solid in many ways. Top 2-3% for BMI\$ and BI\$.

<b>61</b>	<b>SHF KENDRICK U38 X83</b>							
	Calved: Feb. 14, 2010 P43078295 H/P/S/D: P							
Selling: Full possession and 3/4 semen interest.								
<b>BMI\$</b> 24 <b>CEZ\$</b> 17 <b>BI\$</b> 21 <b>CHB\$</b> 29	SHF VISION R117 U38 (DLF,IEF) P42894861	SHF RIB EYE M326 R117 (CHB){IEF,HYF,DLF} SHF MISS PROGRESS S03 ET						
	SHF LADY P52 U49 P42894873	SHF PORTERHOUSE M33 P52 (CHB) SHF MISS 105A M04						
<b>BW</b> 2.7	<b>WW</b> 58	<b>YW</b> 86	<b>MM</b> 19	<b>M&amp;G</b> 48	<b>SC</b> 1.2	<b>FAT</b> -0.01	<b>REA</b> 0.41	<b>MARB</b> 0.13
<b>CE Score</b> 1	<b>Act. BW</b> 86	<b>BW Ratio</b> 101	<b>Adj. WW</b> 659	<b>WW Ratio</b> 97	<b>Adj. YW</b> 1070	<b>YW Ratio</b> 94	<b>Frame Score</b> 5.6	
<b>Adj. BF Ratio</b> 0.14-65	<b>Adj. REA Ratio</b> 11.85-92	<b>REA/cwt</b> 1.21	<b>Adj. MARB</b> 2.94	<b>MARB Ratio</b> 82	<b>Adj. SC (CM)</b> NA	<b>Age of Dam</b> 2	<b>Dam's Production</b> BWR WWR	<b>YWR</b> 1-101 1-97 1-94

- Kendrick shows some good growth with an 86 YW EPD. He also ranks in the top 2-4% for three out of four breed Indexes.



# SANDHILL FARMS BULLS



Lot 62 — SHF Kruger P20 X53

<b>62</b>		<b>SHF KRUGER P20 X53</b>	
Calved: Feb. 10, 2010		P43078271	H/P/S/D: P
Selling: Full possession and 3/4 semen interest.			
<b>BMI\$</b> 26	SHF PROGRESS P20 (CHB)(IEF,HYF,DLF) P42481042		FELTONS LEGEND 242 (SOD,CHB)(HYF) SHF INTRSTATE D03 G06 ET
<b>CEZ\$</b> 22	SHF SATURN S130 U162 P42894681		SHF SATURN M326 S130 (IEF,HYF,DLF) SHF MISS M326 R130
<b>BIIS</b> 23			
<b>CHB\$</b> 28			
<b>BW</b> -0.4	<b>WW</b> 47	<b>YW</b> 66	<b>MM</b> 21
<b>M&amp;G</b> 44	<b>SC</b> 1.1	<b>FAT</b> 0.01	<b>REA</b> 0.20
<b>MARB</b> 0.32			
<b>CE Score</b> 1	<b>Act. BW</b> 72	<b>BW Ratio</b> 86	<b>Adj. WW</b> 668
<b>WW Ratio</b> 98	<b>Adj. YW</b> 1082	<b>YW Ratio</b> 96	<b>Frame Score</b> 5.0
<b>Adj. BF Ratio</b> 0.18-88	<b>Adj. REA Ratio</b> 12.29-95	<b>REA/cwt</b> 1.24	<b>Adj. MARB Ratio</b> 4.42
<b>MARB Ratio</b> 123	<b>Adj. SC (CM)</b> 36.4	<b>Age of Dam</b> 2	<b>Dam's Production WWR</b> 1-98
<b>BWR</b> 1-86	<b>YWR</b> 1-96		

• Kruger comes with a negative BW EPD of -0.4. He also ranks in the top 1-3% for all four of the breed indexes. This Progress son comes from an outstanding cow family for fertility and udder quality.

<b>63</b>		<b>SHF KUDOS P20 X32</b>	
Calved: Feb. 9, 2010		P43093744	H/P/S/D: P
Selling: Full possession and 3/4 semen interest.			
<b>BMI\$</b> 23	SHF PROGRESS P20 (CHB)(DLF,HYF,IEF) P42481042		FELTONS LEGEND 242 (SOD,CHB)(HYF) SHF INTRSTATE D03 G06 ET
<b>CEZ\$</b> 22	SHF MAGGIE S130 U166 P42894685		SHF SATURN M326 S130 (DLF,IEF,HYF) SHF TARGET 634E N04
<b>BIIS</b> 20			
<b>CHB\$</b> 26			
<b>BW</b> -1.1	<b>WW</b> 44	<b>YW</b> 64	<b>MM</b> 19
<b>M&amp;G</b> 41	<b>SC</b> 0.8	<b>FAT</b> 0.01	<b>REA</b> 0.24
<b>MARB</b> 0.26			
<b>CE Score</b> 1	<b>Act. BW</b> 71	<b>BW Ratio</b> 85	<b>Adj. WW</b> 650
<b>WW Ratio</b> 96	<b>Adj. YW</b> 1100	<b>YW Ratio</b> 97	<b>Frame Score</b> 5.0
<b>Adj. BF Ratio</b> 0.17-83	<b>Adj. REA Ratio</b> 12.38-96	<b>REA/cwt</b> 1.23	<b>Adj. MARB Ratio</b> 3.5
<b>MARB Ratio</b> 97	<b>Adj. SC (CM)</b> 35.9	<b>Age of Dam</b> 2	<b>Dam's Production WWR</b> 1-96
<b>BWR</b> 1-97	<b>YWR</b> 1-97		

• Kudos ranks in the top 1% of the breed for BW and Calving Ease Direct EPDs and CEZ\$ breed Index.

<b>64</b>		<b>SHF EXPLODE U15 X129</b>	
Calved: Feb. 19, 2010		P43088506	H/P/S/D: P
Selling: Full possession and 3/4 semen interest.			
<b>BMI\$</b> 21	HHF ULYSSES P68 U15 ET P42945343		SHF PHOENIX M33 P68 (CHB) SHF GOVERNESS 236G M50
<b>CEZ\$</b> 17	SHF MISS PROGRESS S59 P42693455		SHF PROGRESS P20 (CHB)(IEF,DLF,HYF) SHF LADY 512 H49
<b>BIIS</b> 20			
<b>CHB\$</b> 24			
<b>BW</b> 3.3	<b>WW</b> 48	<b>YW</b> 73	<b>MM</b> 19
<b>M&amp;G</b> 42	<b>SC</b> 1.0	<b>FAT</b> 0.02	<b>REA</b> 0.05
<b>MARB</b> 0.26			
<b>CE Score</b> 1	<b>Act. BW</b> 100	<b>BW Ratio</b> 109	<b>Adj. WW</b> 632
<b>WW Ratio</b> 93	<b>Adj. YW</b> 1080	<b>YW Ratio</b> 95	<b>Frame Score</b> 5.9
<b>Adj. BF Ratio</b> 0.23-110	<b>Adj. REA Ratio</b> 11.03-85	<b>REA/cwt</b> 1.08	<b>Adj. MARB Ratio</b> 4.02
<b>MARB Ratio</b> 112	<b>Adj. SC (CM)</b> 37.6	<b>Age of Dam</b> 3	<b>Dam's Production WWR</b> 3-101
<b>BWR</b> 3-101	<b>YWR</b> 3-102		

• If you want to add MARB to your calf crop, consider Explode. He ranks in the top 4% of the breed for MARB and he is inheriting it from both sides of the pedigree.



Courtney Enjoys Another Snowstorm

<b>65</b>		<b>SHF EXTERMINATOR S07 X160</b>	
Calved: Feb. 27, 2010		P43078180	H/P/S/D: P
Selling: Full possession and 3/4 semen interest.			
<b>BMI\$</b> 19	SHF STYLE 412T S07 ET P42705380		GK EXPLOSION 412T (SOD)(HYF,IEF,DLF) SHF INTERSTATE D03 J119
<b>CEZ\$</b> 15	SHF RIB EYE R117 T114 P42795875		SHF RIB EYE M326 R117 (CHB)(DLF,IEF,HYF) SHF TARGET 624E N06
<b>BIIS</b> 16			
<b>CHB\$</b> 28			
<b>BW</b> 4.3	<b>WW</b> 60	<b>YW</b> 85	<b>MM</b> 16
<b>M&amp;G</b> 46	<b>SC</b> 0.7	<b>FAT</b> 0.02	<b>REA</b> 0.27
<b>MARB</b> 0.18			
<b>CE Score</b> 1	<b>Act. BW</b> 88	<b>BW Ratio</b> 98	<b>Adj. WW</b> 674
<b>WW Ratio</b> 99	<b>Adj. YW</b> 1066	<b>YW Ratio</b> 94	<b>Frame Score</b> 5.3
<b>Adj. BF Ratio</b> 0.21-102	<b>Adj. REA Ratio</b> 11.95-92	<b>REA/cwt</b> 1.22	<b>Adj. MARB Ratio</b> 3.46
<b>MARB Ratio</b> 96	<b>Adj. SC (CM)</b> 37.1	<b>Age of Dam</b> 2	<b>Dam's Production WWR</b> 2-99
<b>BWR</b> 2-97	<b>YWR</b> 2-99		

• This bull ranks in the top 3% of the breed for WW EPD. His dam is a Rib Eye daughter that has done a good job.



# SANDHILL FARMS BULLS

<b>66</b>		<b>SHF KENTUCKY P20 X61</b>	
Calved: Feb. 11, 2010		P43078278	H/P/S/D: P
Selling: Full possession and 3/4 semen interest.			
<b>BMI\$</b> 26	SHF PROGRESS P20 {CHB}{IEF,HYF,DLF} P42481042		FELTONS LEGEND 242 {SOD,CHB}{HYF} SHF INTRSTATE D03 G06 ET
<b>CEZ\$</b> 22			
<b>BI\$</b> 24	SHF MISS M326 U02 ET P42894196		KCF BENNETT 3008 M326 {CHB}{DLF,HYF,IEF} SHF GOVERNESS 236G L37
<b>CHB\$</b> 25			
<b>BW</b> -1.0	<b>WW</b> 44	<b>YW</b> 50	<b>MM</b> 19
<b>M&amp;G</b> 41	<b>SC</b> 1.0	<b>FAT</b> 0.02	<b>REA</b> -0.01
<b>MARB</b> 0.38			
<b>CE Score</b> 1	<b>Act. BW</b> 72	<b>BW Ratio</b> 84	<b>Adj. WW</b> 623
<b>WW Ratio</b> 92	<b>Adj. YW</b> 919	<b>YW Ratio</b> 81	<b>Frame Score</b> 5.0
<b>Adj. BF</b> Ratio	<b>Adj. REA</b> Ratio	<b>REA/ cwt</b>	<b>Adj. MARB</b> Ratio
<b>MARB</b> Ratio	<b>Adj. SC</b> (CM)	<b>Age of Dam</b>	<b>Dam's Production</b> WWR
<b>YWR</b>	<b>BWR</b>	<b>WWR</b>	<b>YWR</b>
0.16-79	10.41-81	1.23	3.94
110	NA	2	1-84
1-92	1-81		

• Kentucky ranks in the top 1% of the breed for all the calving ease indicators. His dam, U02, is a full sister to Wonder, the top selling bull in last year's sale and herd bull for us.

<b>67</b>		<b>SHF EXTRO U38 X54</b>	
Calved: Feb. 11, 2010		P43078272	H/P/S/D: P
Selling: Full possession and 3/4 semen interest.			
<b>BMI\$</b> 23	SHF VISION R117 U38 {IEF,DLF} P42894861		SHF RIB EYE M326 R117 {CHB}{HYF,DLF,IEF} SHF MISS PROGRESS S03 ET
<b>CEZ\$</b> 19			
<b>BI\$</b> 21	SHF RADAR R125 T37 {HYF,DLF,IEF} P42795838		SHF RADAR M326 R125 {CHB}{DLF,HYF,IEF} SHF BOOMER P606 R08 {DLF,IEF,HYF}
<b>CHB\$</b> 24			
<b>BW</b> -0.7	<b>WW</b> 45	<b>YW</b> 58	<b>MM</b> 23
<b>M&amp;G</b> 46	<b>SC</b> 0.9	<b>FAT</b> 0.00	<b>REA</b> 0.26
<b>MARB</b> 0.26			
<b>CE Score</b> 1	<b>Act. BW</b> 73	<b>BW Ratio</b> 81	<b>Adj. WW</b> 651
<b>WW Ratio</b> 96	<b>Adj. YW</b> 1005	<b>YW Ratio</b> 89	<b>Frame Score</b> 5.5
<b>Adj. BF</b> Ratio	<b>Adj. REA</b> Ratio	<b>REA/ cwt</b>	<b>Adj. MARB</b> Ratio
<b>MARB</b> Ratio	<b>Adj. SC</b> (CM)	<b>Age of Dam</b>	<b>Dam's Production</b> WWR
<b>YWR</b>	<b>BWR</b>	<b>WWR</b>	<b>YWR</b>
0.17-84	11.11-86	1.15	3.78
105	35.6	3	2-86
2-101	2-98		

• Extro is sired by Vision and out of a Radar daughter that we flushed. Extro comes here with a negative BW EPD and a good MARB ratio of 105.

<b>68</b>		<b>SHF KELLEN P20 X27</b>	
Calved: Feb. 5, 2010		P43078250	H/P/S/D: P
Selling: Full possession and 3/4 semen interest.			
<b>BMI\$</b> 25	SHF PROGRESS P20 {CHB}{HYF,IEF,DLF} P42481042		FELTONS LEGEND 242 {SOD,CHB}{HYF} SHF INTRSTATE D03 G06 ET
<b>CEZ\$</b> 22			
<b>BI\$</b> 21	SHF RIB EYE R117 U58 P42894883		SHF RIB EYE M326 R117 {CHB}{IEF,HYF,DLF} SHF POSITIVE MISS 73C S76
<b>CHB\$</b> 29			
<b>BW</b> -1.1	<b>WW</b> 50	<b>YW</b> 67	<b>MM</b> 22
<b>M&amp;G</b> 47	<b>SC</b> 0.9	<b>FAT</b> 0.01	<b>REA</b> 0.23
<b>MARB</b> 0.32			
<b>CE Score</b> 1	<b>Act. BW</b> 71	<b>BW Ratio</b> 84	<b>Adj. WW</b> 736
<b>WW Ratio</b> 108	<b>Adj. YW</b> 1108	<b>YW Ratio</b> 98	<b>Frame Score</b> 5.5
<b>Adj. BF</b> Ratio	<b>Adj. REA</b> Ratio	<b>REA/ cwt</b>	<b>Adj. MARB</b> Ratio
<b>MARB</b> Ratio	<b>Adj. SC</b> (CM)	<b>Age of Dam</b>	<b>Dam's Production</b> WWR
<b>YWR</b>	<b>BWR</b>	<b>WWR</b>	<b>YWR</b>
0.2-97	12.92-100	1.25	4.9
136	30.6	1	1-84
1-108	1-98		

• Kellen has a negative BW EPD and a 108 ratio at weaning. He also comes in with a 136 MARB ratio and 100 on REA. Sounds pretty good.



Tyler Checks Out His New Pickup

<b>69</b>		<b>SHF EXAMPLE R117 X174</b>	
Calved: March 1, 2010		P43078194	H/P/S/D: P
Selling: Full possession and 3/4 semen interest.			
<b>BMI\$</b> 27	SHF RIB EYE M326 R117 {CHB}{IEF,HYF,DLF} P42584003		KCF BENNETT 3008 M326 {CHB}{HYF,DLF,IEF} HVH MISS HUDSON 83K 8M
<b>CEZ\$</b> 18			
<b>BI\$</b> 26	REMITALL SALLY ET 96S {DLF,IEF} P42964687		REMITALL PATRIOT ET 13P {CHB} REMITALL SALLY ET 161H
<b>CHB\$</b> 24			
<b>BW</b> 0.4	<b>WW</b> 48	<b>YW</b> 64	<b>MM</b> 16
<b>M&amp;G</b> 40	<b>SC</b> 1.4	<b>FAT</b> -0.01	<b>REA</b> 0.10
<b>MARB</b> 0.19			
<b>CE Score</b> 1	<b>Act. BW</b> 72	<b>BW Ratio</b> 78	<b>Adj. WW</b> 645
<b>WW Ratio</b> 95	<b>Adj. YW</b> 974	<b>YW Ratio</b> 86	<b>Frame Score</b> 5.3
<b>Adj. BF</b> Ratio	<b>Adj. REA</b> Ratio	<b>REA/ cwt</b>	<b>Adj. MARB</b> Ratio
<b>MARB</b> Ratio	<b>Adj. SC</b> (CM)	<b>Age of Dam</b>	<b>Dam's Production</b> WWR
<b>YWR</b>	<b>BWR</b>	<b>WWR</b>	<b>YWR</b>
0.17-84	11.08-86	1.23	2.31
64	36.9	4	2-90
2-89	2-86		

• A low BW EPD bull that is in the top 1% of the breed for BMI\$ and BI\$. I probably should have ratioed his yearling data as a single as he has been sick, but I didn't and it is what it is.

<b>70</b>		<b>SHF KINDLE U38 X82</b>	
Calved: Feb. 14, 2010		43078294	H/P/S/D: H
Selling: Full possession and 3/4 semen interest.			
<b>BMI\$</b> 28	SHF VISION R117 U38 {IEF,DLF} P42894861		SHF RIB EYE M326 R117 {CHB}{DLF,HYF,IEF} SHF MISS PROGRESS S03 ET
<b>CEZ\$</b> 23			
<b>BI\$</b> 26	SHF RIB EYE R117 U75 P42894908		SHF RIB EYE M326 R117 {CHB}{HYF,IEF,DLF} SHF MISS PROGRESS S61
<b>CHB\$</b> 26			
<b>BW</b> -2.6	<b>WW</b> 44	<b>YW</b> 56	<b>MM</b> 21
<b>M&amp;G</b> 43	<b>SC</b> 1.2	<b>FAT</b> 0.00	<b>REA</b> 0.25
<b>MARB</b> 0.30			
<b>CE Score</b> 1	<b>Act. BW</b> 66	<b>BW Ratio</b> 78	<b>Adj. WW</b> 664
<b>WW Ratio</b> 98	<b>Adj. YW</b> 1014	<b>YW Ratio</b> 90	<b>Frame Score</b> 4.6
<b>Adj. BF</b> Ratio	<b>Adj. REA</b> Ratio	<b>REA/ cwt</b>	<b>Adj. MARB</b> Ratio
<b>MARB</b> Ratio	<b>Adj. SC</b> (CM)	<b>Age of Dam</b>	<b>Dam's Production</b> WWR
<b>YWR</b>	<b>BWR</b>	<b>WWR</b>	<b>YWR</b>
0.25-118	12.25-95	1.32	3.35
93	NA	1	1-78
1-98	1-90		

• Kindle has the lowest BW EPD in the sale at -2.6. He ranks in the top 1% of the breed for all the calving ease traits.



# SANDHILL FARMS BULLS

<b>71</b>									
<b>SHF KASEY R117 X146</b>									
Calved: Feb. 22, 2010    P43078165    H/P/S/D: P									
Selling: Full possession and 3/4 semen interest.									
<b>BMI\$</b> 24	KCF BENNETT 3008 M326 (CHB){IEF,HYF,DLF}								
<b>CEZ\$</b> 20	SHF RIB EYE M326 R117 (CHB){IEF,DLF,HYF}								
<b>BIIS</b> 23	P42584003    HVH MISS HUDSON 83K 8M								
<b>CHBS</b> 20	SHF GOVERNESS 236G K80								
	P42074453    REMITALL GOVERNOR 236G (SOD,CHB)								
	SHF STOCKLADY 417 F65								
<b>BW</b>	<b>WW</b>	<b>YW</b>	<b>MM</b>	<b>M&amp;G</b>	<b>SC</b>	<b>FAT</b>	<b>REA</b>	<b>MARB</b>	
-0.2	38	53	17	36	1.0	-0.03	0.30	0.10	
<b>CE Score</b>	<b>Act. BW</b>	<b>BW Ratio</b>	<b>Adj. WW</b>	<b>WW Ratio</b>	<b>Adj. YW</b>	<b>YW Ratio</b>	<b>Frame Score</b>		
1	70	75	618	91	1009	89	4.7		
<b>Adj. BF Ratio</b>	<b>Adj. REA Ratio</b>	<b>REA/cwt</b>	<b>Adj. MARB Ratio</b>	<b>MARB Ratio</b>	<b>Adj. SC (CM)</b>	<b>Age of Dam</b>	<b>Dam's Production WWR</b>	<b>YWR</b>	
0.12-58	14.07-109	1.47	2.85	79	31.4	9	9-98	9-92	7-95



*Time to Eat*

• Kasey ratioed 75 at birth and still had an adjusted weaning weight of over 600 lb.



*SHF Princess 12P S109 — Dam of Lot 72*

<b>72</b>									
<b>SHF X-ON R117 X177</b>									
Calved: March 3, 2010    P43078197    H/P/S/D: P									
Selling: Full possession and 3/4 semen interest.									
<b>BMI\$</b> 24	KCF BENNETT 3008 M326 (CHB){DLF,HYF,IEF}								
<b>CEZ\$</b> 21	SHF RIB EYE M326 R117 (CHB){HYF,IEF,DLF}								
<b>BIIS</b> 22	P42584003    HVH MISS HUDSON 83K 8M								
<b>CHBS</b> 21	SHF PRINCESS 12P S109								
	P42693427    HVH PRINCE F202 12P ET								
	SHF MISS 105A M06 ET								
<b>BW</b>	<b>WW</b>	<b>YW</b>	<b>MM</b>	<b>M&amp;G</b>	<b>SC</b>	<b>FAT</b>	<b>REA</b>	<b>MARB</b>	
-0.2	39	59	15	35	1.0	-0.02	0.23	0.08	
<b>CE Score</b>	<b>Act. BW</b>	<b>BW Ratio</b>	<b>Adj. WW</b>	<b>WW Ratio</b>	<b>Adj. YW</b>	<b>YW Ratio</b>	<b>Frame Score</b>		
1	71	77	560	82	1043	92	4.8		
<b>Adj. BF Ratio</b>	<b>Adj. REA Ratio</b>	<b>REA/cwt</b>	<b>Adj. MARB Ratio</b>	<b>MARB Ratio</b>	<b>Adj. SC (CM)</b>	<b>Age of Dam</b>	<b>Dam's Production WWR</b>	<b>YWR</b>	
0.19-89	12.01-93	1.25	3.4	95	33.9	3	3-89	3-87	2-93

• Another low BW bull that ratioed 77 at birth.



## Jake and Tamara Heim (and little Jack) Logan, Iowa

We bred a portion of our heifers to Progress and Treasure last year and they calved and weaned the same percentages as our Angus bred ones. The baldie heifers will be in the replacement pen and their steer mates are soggy, easy feeding, top end steers. I fully expect my baldies to out sell straight blacks.

Two main reasons we purchased your genetics for the Hereford side of our program is your bulls have balanced EPDs that compete with or excel Angus sires and your repeated Denver pen success (you don't just have one outstanding individual).

### CONFERENCE LINE

I just wanted to give you a quick thank you for offering the conference line at your last sale. As we were on our way to your sale in the spring, our pickup died so we knew we would not make the sale in time. I called the sale conference line provided in your catalog and was updated on bids and descriptions by Art Handel as the bulls went through the ring and easily placed my bids. Your bulls sell in the order they are cataloged so it was very easy to follow along. Without the conference line we would have missed the sale entirely and not been able to purchase the bull we wanted. When we finally arrived at Sandhill Farms we went and looked at the bull we had purchased. Your conference line was as close to being at the sale as can be without actually being there! We highly recommend this service for those that can't make it to the sale. — Jake

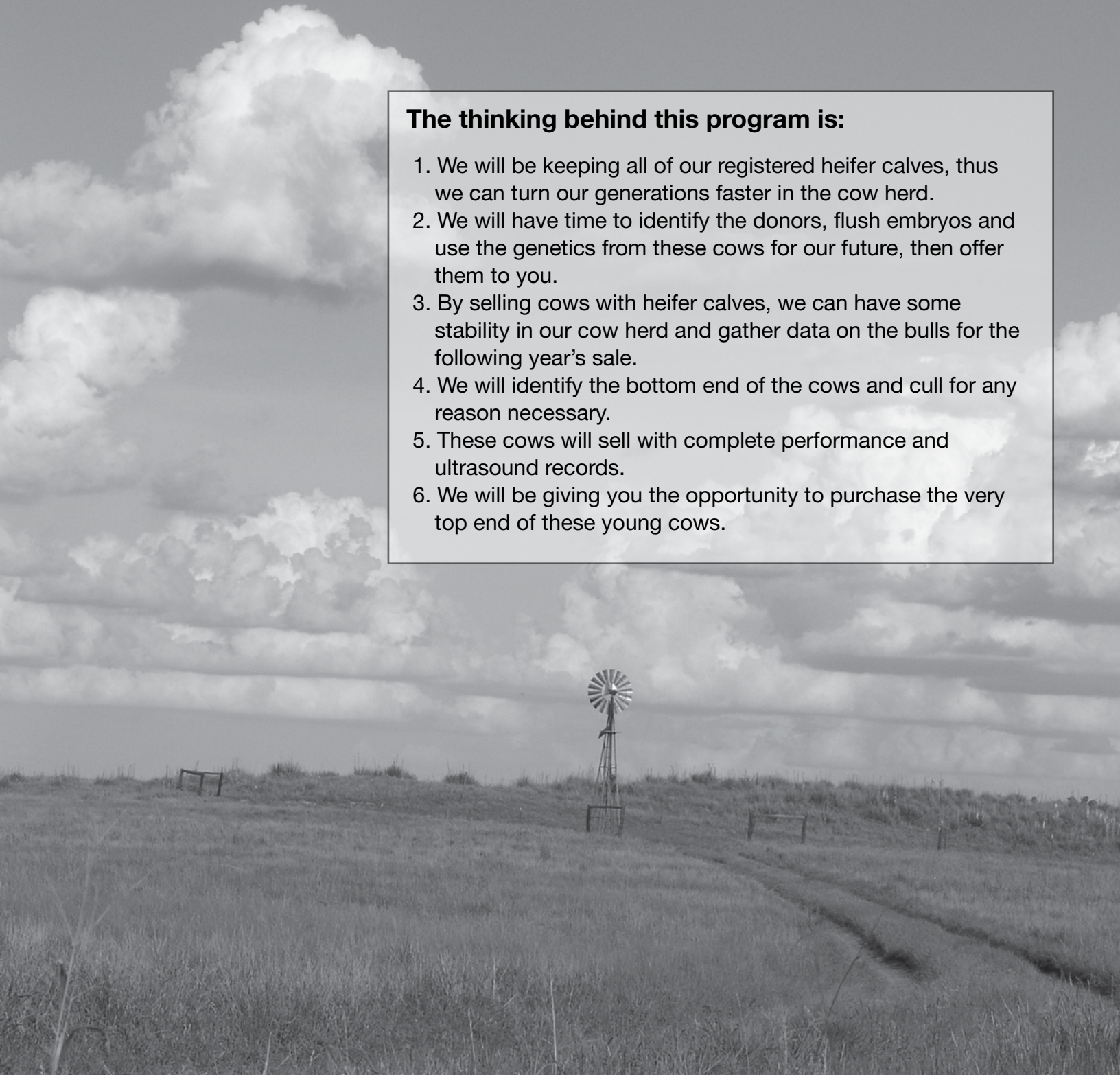


## A few notes about the registered cows selling.

- We are selling all the 5-year-old cows that have been ultrasound checked to be carrying a heifer calf.
- I feel we can offer a no-holes, predictable female package with many future productive years.

### **The thinking behind this program is:**

1. We will be keeping all of our registered heifer calves, thus we can turn our generations faster in the cow herd.
2. We will have time to identify the donors, flush embryos and use the genetics from these cows for our future, then offer them to you.
3. By selling cows with heifer calves, we can have some stability in our cow herd and gather data on the bulls for the following year's sale.
4. We will identify the bottom end of the cows and cull for any reason necessary.
5. These cows will sell with complete performance and ultrasound records.
6. We will be giving you the opportunity to purchase the very top end of these young cows.





# SANDHILL FARMS FEMALES



Lot 73 — SHF Miss Progress S03 ET

<b>73</b>		<b>SHF MISS PROGRESS S03 ET</b>	
Calved: Feb. 5, 2006		P42693475	H/P/S/D: P
Selling: Full possession and 100% interest.			
<b>BMI\$</b> 23	FELTONS LEGEND 242 {SOD,CHB}{HYF}		
<b>CEZ\$</b> 21	SHF PROGRESS P20 {CHB}{DLF,IEF,HYF}		
<b>BIIS</b> 20	P42481042		
<b>CHBS</b> 25	SHF INTRSTATE D03 G06 ET		
	REMITALL GOVERNOR 236G {SOD,CHB}		
	SHF GOVERNESS 236G K42 {DOD}		
	P42074314		
	SHF MISS KEYNOTE 20X E39 {DOD}		
<b>BW</b> -1.2	<b>WW</b> 44	<b>YW</b> 62	<b>MM</b> 24
			<b>M&amp;G</b> 46
			<b>SC</b> 0.9
			<b>FAT</b> 0.04
			<b>REA</b> 0.21
			<b>MARB</b> 0.36
PROGENY PRODUCTION			
<b>BW Ratio</b>	<b>WW Ratio</b>	<b>YW Ratio</b>	<b>MARB Ratio</b>
3-90	2-105	2-101	5-107.2
			<b>REA Ratio</b>
			5-101.2
			<b>FAT Ratio</b>
			5-112.8

- This Progress daughter is the dam of our herd sire, SHF Vision U38. Fifteen sons of Vision sell. We have flushed this cow and have several daughters in the replacements. I don't know what this cow is worth in dollars, you can decide that, but I feel she has more value than any female we have ever sold.
- Due to calve March 11, 2011, with heifer calf sired by Loewen 33T 5S 43W.



Lot 74 — SHF Lacy 412T S05 ET

<b>74</b>		<b>SHF LACY 412T S05 ET</b>	
Calved: Feb. 5, 2006		P42705229	H/P/S/D: P
Selling: Full possession and 100% interest.			
<b>BMI\$</b> 10	EXPLOSION {DLF,IEF,HYC}		
<b>CEZ\$</b> 9	GK EXPLOSION 412T {SOD}{DLF,HYF,IEF}		
<b>BIIS</b> 8	18702681		
<b>CHBS</b> 23	GK QUEEN TEN 782R		
	SHF INTERSTATE 20X D03 {SOD,CHB}		
	SHF INTERSTATE D03 J119		
	P42004061		
	SHF LADY 512 G07 ET		
<b>BW</b> 7.6	<b>WW</b> 55	<b>YW</b> 94	<b>MM</b> 19
			<b>M&amp;G</b> 47
			<b>SC</b> 0.4
			<b>FAT</b> 0.04
			<b>REA</b> 0.00
			<b>MARB</b> 0.13
PROGENY PRODUCTION			
<b>BW Ratio</b>	<b>WW Ratio</b>	<b>YW Ratio</b>	<b>MARB Ratio</b>
3-115	3-105	3-107	3-90.67
			<b>REA Ratio</b>
			3-101.33
			<b>FAT Ratio</b>
			3-94.67

- S05 has one of the more unique pedigrees in the sale. She has a super udder, boasts a 105 WW ratio and 110 YW ratio. This is a top performance cow.
- Due to calve Feb. 19, 2011, with a heifer calf sired by PCR Mr. Advisor 502R.



Brooke, Tyler and Courtney

<b>75</b>		<b>SHF MISS PROGRESS S08 ET</b>	
Calved: Feb. 7, 2006		P42693480	H/P/S/D: P
Selling: Full possession and 100% interest.			
<b>BMI\$</b> 23	FELTONS LEGEND 242 {SOD,CHB}{HYF}		
<b>CEZ\$</b> 22	SHF PROGRESS P20 {CHB}{HYF,IEF,DLF}		
<b>BIIS</b> 20	P42481042		
<b>CHBS</b> 22	SHF INTRSTATE D03 G06 ET		
	REMITALL GOVERNOR 236G {SOD,CHB}		
	SHF GOVERNESS 236G K42 {DOD}		
	P42074314		
	SHF MISS KEYNOTE 20X E39 {DOD}		
<b>BW</b> -1.4	<b>WW</b> 38	<b>YW</b> 56	<b>MM</b> 23
			<b>M&amp;G</b> 42
			<b>SC</b> 0.9
			<b>FAT</b> 0.03
			<b>REA</b> 0.07
			<b>MARB</b> 0.33
PROGENY PRODUCTION			
<b>BW Ratio</b>	<b>WW Ratio</b>	<b>YW Ratio</b>	<b>MARB Ratio</b>
3-87	102-2	104-2	2-113.5
			<b>REA Ratio</b>
			2-96.5
			<b>FAT Ratio</b>
			2-109

- S08 is a full sister to S03. She is in the top 1% of the breed for BW, MARB, CEZ\$ Index and top 2% for BMI\$ Index. I would say the top 3-year-old cow we have is a Rib Eye out of this cow.
- Due to calve March 10, 2011, to Loewen 33T 5S 43W.



# SANDHILL FARMS FEMALES

<b>76</b>	<b>SHF GOVERNESS 236G S105</b> (DLF,IEF)								
	Calved: March 12, 2006			P42693467 H/P/S/D: P					
Selling: Full possession and 100% interest.									
<b>BMI\$</b> <b>17</b>	REMITALL GOVERNOR 236G (SOD,CHB) P41003249			REMITALL CASINO 12C					
<b>CEZ\$</b> <b>12</b>				REMITALL ZERMARVEL 111Z					
<b>BIIS</b> <b>16</b>	SHF MISS KEYNOTE 20X E39 (DOD) P23869777			REMITALL KEYNOTE 20X (SOD,CHB)					
<b>CHB\$</b> <b>19</b>				S1 VICKY 452M 76X					
<b>BW</b>	<b>WW</b>	<b>YW</b>	<b>MM</b>	<b>M&amp;G</b>	<b>SC</b>	<b>FAT</b>	<b>REA</b>	<b>MARB</b>	
6.8	50	79	21	47	1.1	0.01	0.22	-0.02	
PROGENY PRODUCTION									
<b>BW Ratio</b>	<b>WW Ratio</b>	<b>YW Ratio</b>	<b>MARB Ratio</b>	<b>REA Ratio</b>	<b>FAT Ratio</b>				
4-108	3-98	2-98	5-106	5-95.4	5-94.6				



Lot 76 — SHF Governess 236G S105

- This is a full sister to our proven herd sire, Marshal. We have flushed S105 and have several daughters in our replacement pen.
- Due Feb. 18, 2011 with a heifer calf out of Vision.

<b>77</b>	<b>SHF PHOENIX P68 S43</b>								
	Calved: Feb. 17, 2006			P42693436 H/P/S/D: P					
Selling: Full possession and 100% interest.									
<b>BMI\$</b> <b>23</b>	SHF PHOENIX M33 P68 (CHB) P42481140			SHF MARSHAL 236G M33 (SOD,CHB)					
<b>CEZ\$</b> <b>17</b>				SHF INTRSTATE D03 G06 ET					
<b>BIIS</b> <b>22</b>	SHF GOVERNESS 236G L64 P42176568			REMITALL GOVERNOR 236G (SOD,CHB)					
<b>CHB\$</b> <b>22</b>				SHF LADY MASTER 092 F13					
<b>BW</b>	<b>WW</b>	<b>YW</b>	<b>MM</b>	<b>M&amp;G</b>	<b>SC</b>	<b>FAT</b>	<b>REA</b>	<b>MARB</b>	
2.3	45	59	21	43	1.1	0.04	-0.01	0.34	
PROGENY PRODUCTION									
<b>BW Ratio</b>	<b>WW Ratio</b>	<b>YW Ratio</b>	<b>MARB Ratio</b>	<b>REA Ratio</b>	<b>FAT Ratio</b>				
3-104	3-103	3-100	3-118.67	3-99.67	3-101.33				



Feeding Bulls

- Be careful not to overlook this daughter of Phoenix. She ranks in the top 2% for both BMI\$ and BIIS Indexes.
- Due Feb. 18, 2011 with a heifer calf out of Rib Eye.

<b>78</b>	<b>SHF MISS PROGRESS S61</b>								
	Calved: Feb. 22, 2006			P42693432 H/P/S/D: P					
Selling: Full possession and 100% interest.									
<b>BMI\$</b> <b>20</b>	SHF PROGRESS P20 (CHB){IEF,HYF,DLF} P42481042			FELTONS LEGEND 242 (SOD,CHB){HYF}					
<b>CEZ\$</b> <b>21</b>				SHF INTRSTATE D03 G06 ET					
<b>BIIS</b> <b>18</b>	SHF GOVERNESS 236G L91 P42176589			REMITALL GOVERNOR 236G (SOD,CHB)					
<b>CHB\$</b> <b>22</b>				SHF LADY MASTER 092 F21					
<b>BW</b>	<b>WW</b>	<b>YW</b>	<b>MM</b>	<b>M&amp;G</b>	<b>SC</b>	<b>FAT</b>	<b>REA</b>	<b>MARB</b>	
-0.2	37	60	18	36	0.6	0.00	0.16	0.23	
PROGENY PRODUCTION									
<b>BW Ratio</b>	<b>WW Ratio</b>	<b>YW Ratio</b>	<b>MARB Ratio</b>	<b>REA Ratio</b>	<b>FAT Ratio</b>				
3-85	3-96	3-98	3-87.67	3-96.67	3-105				



January Snow

- Here is another daughter of Progress. As more people see these Progress daughters, we sell more semen. S61 is a negative BW cow that ranks in the top 10% for BMI\$ Index.
- Due March 10, 2011 with a heifer calf out of Rib Eye.



# SANDHILL FARMS FEMALES



Lot 79 — SHF Princess 12P S109

<b>79</b>		<b>SHF PRINCESS 12P S109</b>	
Calved: March 14, 2006		P42693427	H/P/S/D: P
Selling: Full possession and 100% interest.			
<b>BMS</b> 17	HVH PRINCE F202 12P ET P42467056		SHF MARSHAL 236G M33 {SOD,CHB}
<b>CEZ</b> 16			KFF PERFECT MISS
<b>BIIS</b> 15			RF TARGET 105A
<b>CHBS</b> 18	SHF MISS 105A M06 ET P42293231	SHF INTERSTATE D03 G19	
<b>BW</b> 3.8	<b>WW</b> 44	<b>YW</b> 67	<b>MM</b> 9
			<b>M&amp;G</b> 31
			<b>SC</b> 0.5
			<b>FAT</b> -0.03
			<b>REA</b> 0.45
			<b>MARB</b> -0.15
PROGENY PRODUCTION			
BW Ratio	WW Ratio	YW Ratio	MARB Ratio
3-89	3-87	2-93	2-109.5
			REA Ratio
			2-94.5
			FAT Ratio
			2-94.5

- S109 is a very attractive granddaughter of Marshal.
- Due Feb. 18, 2011 with a heifer calf out of Rib Eye.



Dove Hunting

<b>80</b>		<b>SHF QUEEN M33 S77</b>	
Calved: Feb. 27, 2006		P42693417	H/P/S/D: P
Selling: Full possession and 100% interest.			
<b>BMS</b> 16	SHF MARSHAL 236G M33 {SOD,CHB} P42293307		REMITALL GOVERNOR 236G {SOD,CHB}
<b>CEZ</b> 13			SHF MISS KEYNOTE 20X E39 {DOD}
<b>BIIS</b> 14			WRB TARGET 634E {CHB}
<b>CHBS</b> 23	SHF TARGET 634E N05 {DOD} P42376864	SHF INTERSTATE D03 G19	
<b>BW</b> 4.9	<b>WW</b> 55	<b>YW</b> 84	<b>MM</b> 19
			<b>M&amp;G</b> 46
			<b>SC</b> 0.8
			<b>FAT</b> 0.01
			<b>REA</b> 0.51
			<b>MARB</b> -0.06
PROGENY PRODUCTION			
BW Ratio	WW Ratio	YW Ratio	MARB Ratio
3-98	3-102	3-100	3-88
			3-109.67
			3-104

- This Marshal daughter has one of the top Vision bulls in the sale. She has the highest REA EPD in the sale at 0.51.
- Due Feb. 18, 2011 with a heifer calf out of Rib Eye.



Lot 81 — SHF Positive Miss 73C S76

<b>81</b>		<b>SHF POSITIVE MISS 73C S76</b>	
Calved: Feb. 27, 2006		P42693443	H/P/S/D: P
Selling: Full possession and 100% interest.			
<b>BMS</b> 14	RF POSTIVE PLUS 73C {SOD}{DLF,IEF} P23716883		BAR JZ TRADITION 434V {SOD}
<b>CEZ</b> 13			RF VICTRA F243 37Y
<b>BIIS</b> 10			MM RSM STOCKMASTER 512 {SOD,CHB}{HYF,DLF,IEF}
<b>CHBS</b> 24	SHF LADY 512 K90 P42074473	MM CISCO LADY 203 {DOD}	
<b>BW</b> 5.4	<b>WW</b> 57	<b>YW</b> 92	<b>MM</b> 17
			<b>M&amp;G</b> 46
			<b>SC</b> 0.5
			<b>FAT</b> 0.03
			<b>REA</b> 0.28
			<b>MARB</b> 0.02
PROGENY PRODUCTION			
BW Ratio	WW Ratio	YW Ratio	MARB Ratio
3-94	3-99	3-101	3-100.33
			3-104.33
			3-104.33

- Here is a daughter of Postive Plus. She goes back to the cow family that started herd sires Progress and Phoenix.
- Due Feb. 18, 2011 with a heifer calf out of Vision.



# SANDHILL FARMS FEMALES

<b>82</b>	<b>SHF PRINCESS 12P S94</b>							
Calved: March 7, 2006 P42693447 H/P/S/D: P								
Selling: Full possession and 100% interest.								
<b>BMS</b> <b>14</b>	SHF MARSHAL 236G M33 {SOD,CHB}							
<b>CEZ</b> <b>12</b>	HVH PRINCE F202 12P ET P42467056							
<b>BIIS</b> <b>13</b>	KFF PERFECT MISS							
<b>CHBS</b> <b>19</b>	MM RSM STOCKMASTER 512 {SOD,CHB}{IEF,DLF,HYF}							
	SHF LADY 512 K55 P42074338							
	SHF STOCKLADY 417 G88							
<b>BW</b> 5.9	<b>WW</b> 48	<b>YW</b> 76	<b>MM</b> 14	<b>M&amp;G</b> 38	<b>SC</b> 0.6	<b>FAT</b> 0.04	<b>REA</b> -0.16	<b>MARB</b> 0.13
PROGENY PRODUCTION								
<b>BW Ratio</b>	<b>WW Ratio</b>	<b>YW Ratio</b>	<b>MARB Ratio</b>	<b>REA Ratio</b>	<b>FAT Ratio</b>			
3-96	3-97	3-97	3-109.33	3-93	3-100.67			

- This Marshal granddaughter goes back to some of the original Ogeechee cows I bought 30 years ago.
- Due Feb. 18, 2011 with a heifer calf out of Vision.

<b>83</b>	<b>SHF MISS M326 S96</b>							
Calved: March 7, 2006 P42693379 H/P/S/D: P								
Selling: Full possession and 100% interest.								
<b>BMS</b> <b>27</b>	RRH MR FELT 3008 {SOD,CHB}{IEF,HYF,DLF}							
<b>CEZ</b> <b>19</b>	KCF BENNETT 3008 M326 {CHB}{DLF,HYF,IEF}							
<b>BIIS</b> <b>26</b>	KCF MISS 459 F284							
<b>CHBS</b> <b>25</b>	SHF MISS M82 P74 {DOD}							
	SHF MONACO 236G M82							
	SHF LADY 512 K28							
<b>BW</b> 2.4	<b>WW</b> 44	<b>YW</b> 67	<b>MM</b> 17	<b>M&amp;G</b> 39	<b>SC</b> 1.4	<b>FAT</b> -0.03	<b>REA</b> 0.24	<b>MARB</b> 0.21
PROGENY PRODUCTION								
<b>BW Ratio</b>	<b>WW Ratio</b>	<b>YW Ratio</b>	<b>MARB Ratio</b>	<b>REA Ratio</b>	<b>FAT Ratio</b>			
3-97	3-100	3-99	3-95	3-99.33	3-97			

- This is the lone M326 daughter in the sale. She also has the most impressive set of Indexes offered.
- Due Feb. 18, 2011 with a heifer calf out of Advisor.

<b>84</b>	<b>SHF GOVERNESS 236G S83</b> {DOD}							
Calved: March 1, 2006 P42693460 H/P/S/D: P								
Selling: Full possession and 100% interest.								
<b>BMS</b> <b>11</b>	REMITALL CASINO 12C							
<b>CEZ</b> <b>9</b>	REMITALL GOVERNOR 236G {SOD,CHB}							
<b>BIIS</b> <b>9</b>	P41003249							
<b>CHBS</b> <b>22</b>	REMITALL ZERMARVEL 111Z							
	MM STOCKMAN 033094							
	SHF STOCK LADY 417 G14 P24016255							
	SHF MS FST TRK W81 A04 {DOD}							
<b>BW</b> 7.4	<b>WW</b> 48	<b>YW</b> 91	<b>MM</b> 22	<b>M&amp;G</b> 46	<b>SC</b> 0.5	<b>FAT</b> -0.05	<b>REA</b> 0.35	<b>MARB</b> -0.09
PROGENY PRODUCTION								
<b>BW Ratio</b>	<b>WW Ratio</b>	<b>YW Ratio</b>	<b>MARB Ratio</b>	<b>REA Ratio</b>	<b>FAT Ratio</b>			
3-98	3-112	2-107	2-87	2-106	2-96			

- Here is a Governor daughter that has the highest weaning weight ratio in the cow sale at 112.
- Due Feb. 18, 2011 with a heifer calf out of Rib Eye.

<b>85</b>	<b>SHF GOVERNESS 236G S73</b>							
Calved: Feb. 27, 2006 P42693452 H/P/S/D: P								
Selling: Full possession and 100% interest.								
<b>BMS</b> <b>16</b>	REMITALL CASINO 12C							
<b>CEZ</b> <b>12</b>	REMITALL GOVERNOR 236G {SOD,CHB}							
<b>BIIS</b> <b>16</b>	P41003249							
<b>CHBS</b> <b>23</b>	REMITALL ZERMARVEL 111Z							
	REMITALL GOVERNOR 236G {SOD,CHB}							
	SHF GOVERNESS 236G J58 {DOD}							
	P41123603							
	DL DOMINETTE 86X							
<b>BW</b> 5.7	<b>WW</b> 43	<b>YW</b> 71	<b>MM</b> 19	<b>M&amp;G</b> 41	<b>SC</b> 0.7	<b>FAT</b> -0.04	<b>REA</b> 0.45	<b>MARB</b> 0.08
PROGENY PRODUCTION								
<b>BW Ratio</b>	<b>WW Ratio</b>	<b>YW Ratio</b>	<b>MARB Ratio</b>	<b>REA Ratio</b>	<b>FAT Ratio</b>			
3-96	3-97	3-97	3-111.33	3-114.67	3-112			

- Here is a double bred daughter of Governor. We are keeping a replacement sire by Rib Eye.
- Due with a heifer calf March 29, 2011 out of Loewen 33T 5S 43W.

<b>86</b>	<b>SHF PATRIOT 13P S39</b>							
Calved: Feb. 15, 2006 P42731420 H/P/S/D: P								
Selling: Full possession and 100% interest.								
<b>BMS</b> <b>17</b>	REMITALL OLYMPIAN ET 262L {CHB}							
<b>CEZ</b> <b>10</b>	REMITALL PATRIOT ET 13P {CHB}							
<b>BIIS</b> <b>14</b>	P42597023							
<b>CHBS</b> <b>30</b>	REMITALL GINGER 23G							
	BAR JZ TRADITION 434V {SOD}							
	SHF MISS 434V N69 {DOD}							
	P42379943							
	SHF STOCK LADY 417 H12 {DOD}							
<b>BW</b> 5.4	<b>WW</b> 58	<b>YW</b> 94	<b>MM</b> 23	<b>M&amp;G</b> 53	<b>SC</b> 0.8	<b>FAT</b> -0.02	<b>REA</b> 0.39	<b>MARB</b> 0.20
PROGENY PRODUCTION								
<b>BW Ratio</b>	<b>WW Ratio</b>	<b>YW Ratio</b>	<b>MARB Ratio</b>	<b>REA Ratio</b>	<b>FAT Ratio</b>			
3-101	3-106	3-104	3-110	3-97.67	3-97.67			

- This Patriot daughter has the highest CHBS Index in the sale. Her progeny have ratioed 121, also the highest.
- She is due April 10, 2011 with a heifer calf out of Loewen 33T 5S 43W. If S39 doesn't calve by the sale, we will keep her and guarantee a live heifer calf.



Getting Ready to Show at NWSS



# SANDHILL FARMS COMMERCIAL HEIFERS

These commercial Hereford heifers are out of the heart of our commercial herd. Our commercial Hereford herd was started in the mid 1940s by my grandfather, Roy Schultz and continued by Dad, Ron Schultz.

<b>Lot 87-91</b>	Commercial Hereford heifers
<b>Lot 92-96</b>	Commercial Hereford heifers
<b>Lot 97-101</b>	Commercial Hereford heifers
<b>Lot 102-106</b>	Commercial Hereford heifers
<b>Lot 107-111</b>	Commercial Hereford heifers



## HEREFORD BREED AVERAGE AND PERCENTILE BREAKDOWN

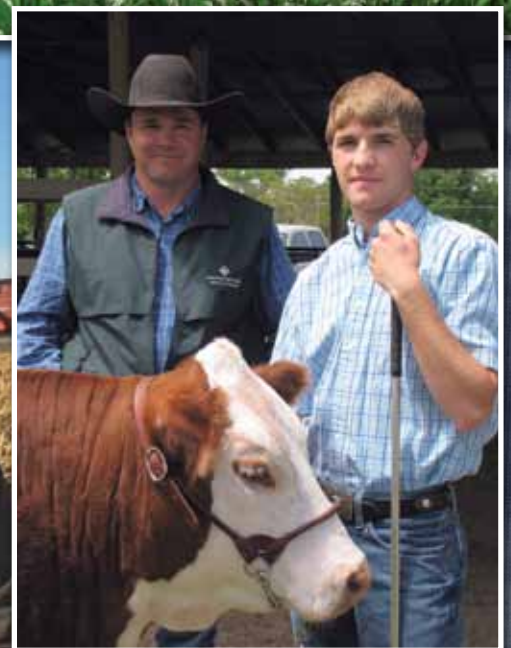
	CE	BW	WW	YW	MM	M&G	CEM	SC	FAT	REA	MARB	BMI\$	CEZ\$	BIIS	CHB
Top 1%	+5.8	-1.0	+63	+103	+31	+57	+4.8	+1.5	-0.040	+0.63	+0.34	+26	+21	+24	+30
Top 10%	+3.3	+1.3	+54	+89	+24	+49	+2.9	+1.0	-0.020	+0.44	+0.18	+20	+18	+18	+25
Top 20%	+2.2	+2.2	+51	+83	+22	+46	+2.2	+0.9	-0.012	+0.36	+0.11	+18	+17	+17	+23
Breed Avg.	0.3	3.6	43	71	17	38	0.7	0.7	0.002	0.22	0.04	15	14	14	18







2010 JNHE — 1st place  
Team Marketing







2048 280th Ave. • Haviland, KS 67059  
Kevin and Vera Schultz 620-995-4072  
Kevin cell 620-546-4570  
Vera cell 620-546-3982  
Ron and Arnita Schultz 620-348-4863  
[www.sandhillfarms.com](http://www.sandhillfarms.com)  
[kevin@sandhillfarms.com](mailto:kevin@sandhillfarms.com)



**SANDHILL  
FARMS**  
NAMED BIF SEEDSTOCK  
PRODUCER OF THE YEAR

