

# Sandhill Farms

**April 6, 2012 • 1 p.m.**  
**Selling 100 Bulls and 14 Females**  
**Also Selling 40 Commercial Females**  
**Haviland, Kan.**

Visit [www.sandhillfarms.com](http://www.sandhillfarms.com) or call 620-995-4072  
for updated information and videos of sale cattle.





2011 JNHE 1st Place Team Marketing



KSU Students





**Sandhill Farms**

Kevin and Vera Schultz  
Haviland, KS 67059  
620-995-4072 • Cell 620-546-4570  
Ron and Arnita Schultz • 620-348-4863  
[www.sandhillfarms.com](http://www.sandhillfarms.com)

Hello Cattlemen,

We would like to welcome you to this year's sale. I hope this invitation finds you and your family well. I realize that one bull won't fit all people's needs, however, it is our goal to offer genetics that do fit your goal and won't sacrifice other traits that are less important to you, but have an economic impact.

- **Calving Ease:** Many of these bulls are what we consider potential heifer bulls. We have backed this up with many years and records that are presented in the Calving Ease Indexes.
- **Carcass:** The graph below shows our bulls average Rib Eye Area, Intramuscular Fat and Back Fat along with the average of the nation's Angus measurements for the same traits. We do have customer reports with SHF sired cattle making CAB. You won't sacrifice carcass premiums with SHE.

Average	REA	IMF	BF
Sandhill Farms	13.6 sq.in.	3.7%	.22 in.
Angus Breed	12.3 sq.in	3.7%	.28 in.

- **Performance:** These bulls' average EPDs rank them in the top percent of the breed for all the breed EPDs and Indexes. We feed out our steers in a commercial feedyard to gather actual data and profits.
- **Eye Appeal:** We have received Grand Champion or Reserve Grand Champion pen of 3 bulls at the Denver Stock Show 6 out of the last 7 years.
- **Cross breeding:** Research has been proven to show:

**\$51 more per cow profit per year.**  
**The baldie F1 heifers had a 7% advantage in conception rates.**  
**\$110 more per head when they sold the bred baldie heifers.**

Like in the past several years, we are offering all of the 5-year-old cows that have heifer calves at side. I would say that over 50% of the cows we have sold in the past two sales have gone on to be donor cows for the new owners. I believe this set of cows has the same potential. I had hoped to have a larger number this year, but two-thirds of them sexed to have bull calves.

The heifers selling are all open commercial females. These heifers are from the commercial herd here at SHF. They have been vaccinated and are ready to breed. We have a few black baldie heifers that will sell in the last group.

Give us a call and we will assist you in anyway we can and we hope to see you here on April 6th.

Sincerely,  
Kevin

**Average EPDs of Sale Bulls and National Rank**

CE	BW	WW	YW	MM	M&G	SC	FAT	REA	MARB	BMI\$	CEZ\$	BI\$	CHB\$
3.31	1.8	53	81	21	47	1.1	.0	.36	.23	24	19	21	29
10%	15%	15%	25%	30%	20%	5%	50%	25%	5%	4%	5%	5%	5%

### Repeat Buyer Credit Policy

We are offering a "repeat buyer credit policy." If you purchased an animal from us in the previous year, you will receive 5% off your total purchase in this year's sale. This policy will be ongoing and will apply to next year's sale. The 5% discount is determined after all credits have been subtracted from the gross purchase price.



*This sale will be broadcast live on the Internet at [www.dvauction.com](http://www.dvauction.com). For more information, see page 15.*

# Sandhill Farms Production Sale

Friday, April 6, 2012 • At the Ranch • 1 p.m. (CST)

2048 280th Ave. • Haviland, KS 67059

Kevin and Vera Schultz 620-995-4072 • Kevin cell 620-546-4570 • Vera cell 620-546-3982

Ron and Arnita Schultz 620-348-4863

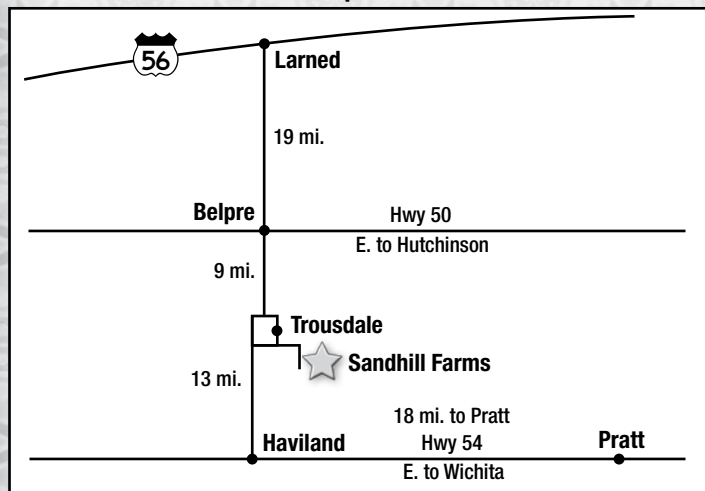
[www.sandhillfarms.com](http://www.sandhillfarms.com) • [kevin@sandhillfarms.com](mailto:kevin@sandhillfarms.com)

**Sale Day Phone toll free 866-502-8312 Passcode 733153**

**Cattle will sell in lot order.**

**Please call our home number for bidder # prior to sale day.**

**Located near Trousdale. See map.**



**Inspection of cattle:** The cattle will be available for inspection any time prior to sale at Sandhill Farms.

Soup supper will be Thursday night. A complimentary lunch will be available on sale day along with donuts and coffee on Friday morning.

**Note:** Sandhill Farms reserves the right to a 1/4 semen interest on all sale bulls. On several bulls we will retain an additional 1/4 semen interest. These bulls will be marked.

## Terms and Conditions

**Delivery:** Free delivery on bulls and cows within the U.S. \$75 off per bull you haul. No delivery on the heifers.

**Guarantee:** We guarantee that all breeding cattle, both females and bulls, are fertile to the best of our knowledge. If they are injured any time in the 12 months after they are purchased so as to make them functionally infertile, we will provide you with a satisfactory replacement, if available, or issue you credit equal to your purchase minus salvage value.

**Sight Unseen Guarantee:** Just like when we sold bulls private treaty, we will guarantee your satisfaction of the bulls we purchase for you. If you don't feel like the bull was represented accurately after he has been at your place, let us know and all you will pay is the trucking. We will take the bull back. You must talk to us at Sandhill Farms so we can help match you up with the best bulls for you prior to the sale.

**Health:** All bulls have been fertility tested by Dr. Mike Burdett of Larned Veterinary Clinic and passed. They were also vaccinated with Staybred VL5 and poured with ivermectin. All cattle have been tested negative for PI BVD. At weaning, the bulls and heifers were vaccinated and boosted with Bovishield Gold 5,

## Special Guests

Levi Landers, <i>Hereford World</i> -----	308-730-1396
Justin Stout, <i>Stock Exchange</i> -----	913-645-5136
Rod Swafford, <i>High Plains Journal</i> -----	620-338-7244
Mark and Jill Hotchkiss, <i>Hereford America</i> -----	605-490-1513
Joel Birdwell, <i>Oklahoma Cowman</i> -----	405-368-1058
Art Handel, Handel Marketing Services -----	605-391-8233
Andrew Sylvester, <i>Kansas Stockman</i> -----	785-273-5115
Don Birk Enterprises -----	417-860-8595
Auctioneer, Jim Birdwell, Fletcher, Okla. -----	580-695-2352

## Special Comments

Art Handel, Handel Marketing Services, Marc Hotchkiss, *Hereford America* and Levi Landers with the American Hereford Association have seen all the cattle. They can take phone bids or advise about the cattle. Inclement weather: check our Web site [www.sandhillfarms.com](http://www.sandhillfarms.com) for weather postponements.

## Accommodations

*Pratt, 30 miles southeast from Sandhill Farms*

Days Inn ----- 620-672-9465

Holiday Inn Express ----- 620-508-6350

*Larned, 30 miles north of Sandhill Farms*

Best Western ----- 620-285-3114

Rodeway Inn ----- 620-285-2300

## Air Travel

Wichita is located 100 miles east of Sandhill Farms and is served by major airline carriers. Dodge City is located 60 miles west of Sandhill Farms and is a regional airport.

Presponse SQ and Vision 7. The heifers were vaccinated with Bovishield Gold FP 5 VL5 and poured with ivermectin. Herd health is excellent. Individual health papers will be provided for shipment anywhere.

**Bull Development:** The bulls were creep fed on grass in late summer. After weaning, they have been grazing on wheat or annual rye pasture when available. Silage and 8 lb. of grain have also been fed.

**Announcements:** Check our Web site for updated information at [www.sandhillfarms.com](http://www.sandhillfarms.com).

**Liability:** Any person attending the sale does so at his own risk. The sale management, owners nor any person connected with this sale do not assume any liability, legal or otherwise.

**Registrations/Transfers:** Registration certificates will be transferred to the buyer upon request at the seller's expense. When making settlement, buyers must give complete written name and address.

**Insurance:** Insurance will be available sale day for those wishing to purchase it. Please tell the clerk when settling up. Sheila Jensen, Livestock Insurance Agent 785-374-4372.

# Glossary of Performance Terms

We are going to give you all the data we can gather and let you decide which bulls will fit in your program the best.

- **Expected Progeny Difference (EPD)** — The prediction of how future progeny of each animal are expected to perform relative to the progeny of other animals listed from the same database. EPDs are expressed in units of measure for the trait, plus or minus. EPDs are not to be compared between breeds.
- **ACC** — Accuracy is the reliability that can be placed on the EPD. An accuracy of close to 1.0 indicates higher reliability.
- **Birth wt.** — The actual weight in pounds at birth.
- **CE** — Calving-Ease Score: 1= unassisted; 2= some assistance; 3=mechanical assistance.
- **Adj. WW** — Weaning weight adjusted to 205-days of age and adjusted for age of dam.
- **Adj. YW** — Yearling weight adjusted to 365-days of age and adjusted for age of dam.
- **Weight Ratio** — A direct comparison of one calf to all other calves in his contemporary group. 105 means that the calf performed 5% above group average for that trait and a 95 ratio indicates that the calf is 5% below group average for that trait.
- **Contemporary Group** — A group of cattle about the same age and given equal treatment.

## Growth EPDs

- **Birth Wt. EPD (BW)** — Birth weight of animal's progeny expected difference as compared to other animals from the same breed or database.
- **Weaning Wt. EPD (WW)** — Weaning weight of animal's progeny expected difference as compared to other animals from the same breed or database.
- **Yearling Wt. EPD (YW)** — Yearling weight of animal's progeny expected difference as compared to other animals from the same breed or database.
- **Scrotal Circumference (SC)** — Expressed in centimeters, this is a predictor of the difference in transmitting scrotal size compared to other animals from the same breed or database.

## Maternal EPDs

- **Maternal Milk (MM)** — A predictor of a sire's genetic merit for milk and mothering ability as expressed in his daughters compared to daughters of other sires.
- **Milk & Growth (M&G)** — A predictor of a sire's daughters for milk and growth. In other words, it is that part of a calf's weaning weight attributed to milk and genetics for growth.

## Carcass EPDs

- **Back Fat (Fat)** — A predictor of the difference in external fat thickness at the 12th rib.
- **Rib Eye Area (REA)** — A predictor of the difference in ribeye area.
- **Marbling (MARB)** — A predictor of the difference in intramuscular fat.

## Breed Indexes

- **Baldy Maternal Index (BMI)** — Combination of weighted traits that affect the bottom line when mating the Hereford bull on black cows.
- **Calving Ease Index (CEI)** — Animal's potential for use on heifers.
- **Brahman Influence Index (BII)** — Similar to BMI index, but weighted heavier for traits that will make Brahman cattle more profitable.
- **Certified Hereford Beef Index (CHB)** — Animal's ability to perform in the feedlot and on the rail.

## Ultrasound Adjusted Measurements

- **Adj. % MARB** — The percent intramuscular fat (marbling) adjusted to 365-days of age. Heritability for marbling is in the moderate range. The intramuscular fat in longissimus muscle of ribbed carcasses is the principal determinant of USDA quality grade in cattle slaughtered at less than 30-months of age. Heifers and steers in the 4% range of MARB will be close to making the Choice grade. Bulls if they were steers with a 3% MARB will also be close to the Choice grade. The difference is the influence of testosterone in the bulls' system.
- **Adj. REA** — Each bull's ribeye area measured in square inches and adjusted to one year of age. REA is used in the calculation of yield grade.
- **Adj. Backfat** — This is the backfat measured in inches adjusted to 365-days of age. The BF thickness is directly related to the carcass yield grade.
- **Rib Eye/ cwt.** — This is the adjusted REA divided by the hundred weight of the bull. The weight of the animal, which is affected by fill, body condition and others, can change this ratio greatly.

## Dam's and/or Progeny Production Records

- **Birth Weight Ratio (BWR)** — The number of calves a dam has had and their average birth wt. ratio. Example: 2-98 means the dam has had 2 calves with an average BWR of 98.
- **Weaning Weight Ratio (WWR)** — The number of calves a dam has had and their average weaning weight ratio. Example: 2-102 means the dam has had 2 calves with an average WWR of 102.
- **Yearling Weight Ratio (YWR)** — The number of calves a dam has had and their average yearling weight ratio. Example: 2-103 means the dam has had 2 calves with an average YWR of 103.
- **Marbling Ratio (MARBR)** — The number of calves a dam has had and their average wt. ratio. Example: 2-98 means the dam has had 2 calves with an average MARB of 98.
- **Rib Eye Ratio (REAR)** — The number of calves a dam has had and their average ratio. Example: 2-102 means the dam has had 2 calves with an average REA of 102.
- **Fat Ratio (FATR)** — The number of calves a dam has had and their average ratio. Example: 2-103 means the dam has had 2 calves with an average FAT of 103.
- **DOB: Date of birth**
- **H/P/S/D: — Horned/Polled/Scurred/Dehorned**

BULL LOT		DOB: ####/###/###	#####	H/P/S/D: H				
Selling: Full possession and 3/4 semen interest.								
<b>BMIS</b> 00	SHF RADAR M326 R125 P42584018	KCF BENNETT 3008 M326						
<b>CEZ\$</b> 00		SHF POSTIVE MISS 73C M15						
<b>BIIS</b> 00		MM RSM STOCKMASTER 512						
<b>CHBS</b> 00	SHF GOVERNESS 236G L37 P42176503	SHF INTERSTATE D03 G80						
<b>BW</b> 0.0	<b>WW</b> 00	<b>YW</b> 00	<b>MM</b> 00	<b>M&amp;G</b> 00	<b>SC</b> 0.0	<b>FAT</b> 0.00	<b>REA</b> 0.00	<b>MARB</b> 0.00
<b>CE Score</b> 0.0	<b>Act. BW</b> 00	<b>BW Ratio</b> 00	<b>Adj. WW</b> 0	<b>WW Ratio</b> 00	<b>Adj. YW</b> 00	<b>YW Ratio</b> 0.00	<b>Frame Score</b> 0.00	
<b>Adj. BF Ratio</b>	<b>Adj. REA Ratio</b>	<b>REA/ cwt</b>	<b>Adj. MARB</b>	<b>MARB Ratio</b>	<b>Adj. SC (CM)</b>	<b>Age of Dam</b>	<b>Dam's Production</b>	
00-000	00.00-000	0.00-000	00	00	00	00	0-000	0-000
							<b>WWR</b>	<b>YWR</b>
							0-000	0-000

FEMALE LOT		DOB: ####/###/###	#####	H/P/S/D: H				
Selling: Full possession								
<b>BMIS</b> 00	SHF RIB EYE M326 R117 P42584003	KCF BENNETT 3008 M326						
<b>CEZ\$</b> 00		HVH MISS HUDSON 83K 8M						
<b>BIIS</b> 00		SHF INTERSTATE 20X D03						
<b>CHBS</b> 00	SHF INTERSTATE D03 N74 P42377662	SHF STOCKLADY 417 G88						
<b>BW</b> 0.0	<b>WW</b> 00	<b>YW</b> 00	<b>MM</b> 00	<b>M&amp;G</b> 00	<b>SC</b> 0.0	<b>FAT</b> 0.00	<b>REA</b> 0.00	<b>MARB</b> 0.00
<b>PROGENY PRODUCTION</b>								
<b>BW Ratio</b>	<b>WW Ratio</b>	<b>YW Ratio</b>	<b>MARB Ratio</b>	<b>REA Ratio</b>	<b>FAT Ratio</b>			
00-00	00-00	00-00	00-00	00-00	00-00			

Take time to drive through our cow herd while you are here for the sale.

Vehicles will be provided.



# REFERENCE SIRES



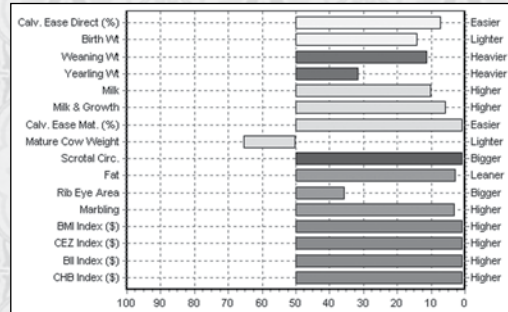
**SHF RIB EYE M326 R117**



T33 daughter of R117, selling as Lot 100

REF A		<b>SHF RIB EYE M326 R117</b>						
		Calved: March 23, 2005	P42584003 H/P/S/D: P					
<b>BMI\$</b> 31		RRH MR FELT 3008 {SOD,CHB}{DLF,HYF,IEF}						
<b>CEZ\$</b> 22		KCF BENNETT 3008 M326 {CHB}{DLF,HYF,IEF}						
<b>BIIS</b> 27		KCF MISS 459 F284						
<b>CHB\$</b> 33		MSU MF HUDSON 19H {SOD,CHB}{HYF}						
		HVH MISS HUDSON 83K 8M						
		P42247970 SUN VINDY MISS 83K						
<b>BW</b>	<b>WW</b>	<b>YW</b>	<b>MM</b>	<b>M&amp;G</b>	<b>SC</b>	<b>FAT</b>	<b>REA</b>	<b>MARB</b>
1.7	55	81	25	53	1.7	-0.035	0.32	0.27
<b>CE Score</b>	<b>Act. BW</b>	<b>BW Ratio</b>	<b>Adj. WW</b>	<b>WW Ratio</b>	<b>Adj. YW</b>	<b>YW Ratio</b>	<b>Adj. YH (IN)</b>	
1	87	93	734	108	1,306	110	51	

- Rib Eye is a breed trait leader in 11 different traits. A proven calving ease sire with a 92% accuracy. In addition, he ranks in the top 3% or better for all four breed Indexes. Rib Eye is one of the top semen selling sires in the ABS lineup.
- Selling four sons and many grandsons.
- Semen available from ABS.



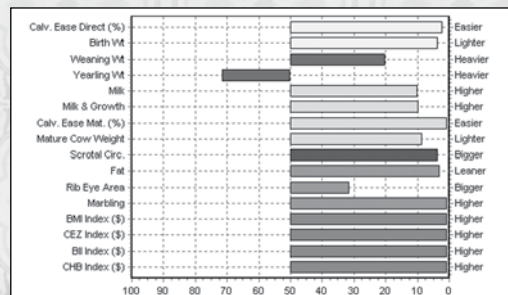
**SHF VISION R117 U38**



SHF Miss Progress S03 ET — Dam of SHF Vision R117 U38

REF B		<b>SHF VISION R117 U38</b>						
		Calved: Feb. 7, 2008	P42894861 H/P/S/D: P					
<b>BMI\$</b> 31		KCF BENNETT 3008 M326 {CHB}{DLF,HYF,IEF}						
<b>CEZ\$</b> 22		SHF RIB EYE M326 R117 {CHB}{DLF,HYF,IEF}						
<b>BIIS</b> 27		HVH MISS HUDSON 83K 8M						
<b>CHB\$</b> 35		SHF MISS PROGRESS P20 {CHB}{DLF,HYF,IEF}						
		SHF MISS PROGRESS S03 ET						
		P42693475 SHF GOVERNESS 236G K42 {DOD}						
<b>BW</b>	<b>WW</b>	<b>YW</b>	<b>MM</b>	<b>M&amp;G</b>	<b>SC</b>	<b>FAT</b>	<b>REA</b>	<b>MARB</b>
0.1	52	67	25	51	1.3	-0.033	0.34	0.45
<b>CE Score</b>	<b>Act. BW</b>	<b>BW Ratio</b>	<b>Adj. WW</b>	<b>WW Ratio</b>	<b>Adj. YW</b>	<b>YW Ratio</b>	<b>Adj. YH (IN)</b>	
1	78	91	729	110	1277	109	52.5	

- Vision has proven himself as a true breeding tool. A proven trait leader in 13 different areas, ranging from calving ease to carcass traits. Vision ranks in the top 1% of the breed for all breed indexes. The first daughters of Vision have calves at side and I believe they may end up being his greatest legacy.
- Selling 14 sons
- Semen from SHF, Rausch Herefords and Ravine Creek Ranch



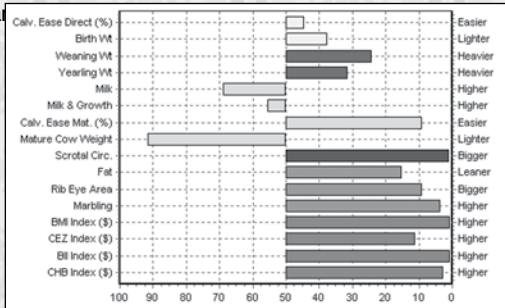
# REFERENCE SIRES

<b>REF C</b>	<b>SHF WONDER M326 W18 ET</b>								
	Calved: Feb. 7, 2009			P42991698			H/P/S/D: P		
	<b>BMI\$</b> 29	KCF BENNETT 3008 M326 (CHB) P42361822			RRH MR FELT 3008 (SOD,CHB){DLF,HYF,IEF}				
	<b>CEZ\$</b> 18				KCF MISS 459 F284				
<b>BI\$</b> 27	SHF GOVERNESS 236G L37 P42176503			MM RSM STOCKMASTER 512 (SOD,CHB){DLF,HYF,IEF}					
<b>CHB\$</b> 30				SHF INTERSTATE D03 G80					
<b>BW</b>	<b>WW</b>	<b>YW</b>	<b>MM</b>	<b>M&amp;G</b>	<b>SC</b>	<b>FAT</b>	<b>REA</b>	<b>MARB</b>	
3.1	51	81	15	40	1.5	-0.016	0.50	0.26	
<b>CE Score</b>	<b>Act. BW</b>	<b>BW Ratio</b>	<b>Adj. WW</b>	<b>WW Ratio</b>	<b>Adj. YW</b>	<b>YW Ratio</b>	<b>Adj. YH (IN)</b>		
1	82		716		107		52		



**SHF WONDER M326 W18 ET**

- If you have not heard of Wonder prior to this sale, I believe you will know him after. We only have two sons in the sale. They are both real top end bulls. We have 12 full sisters in production and one of them was the dam of the high selling bull in last year's sale.
- Tested in the National Reference Sire test and a breed leader.
- Selling two sons in the sale.
- Semen from SHF at



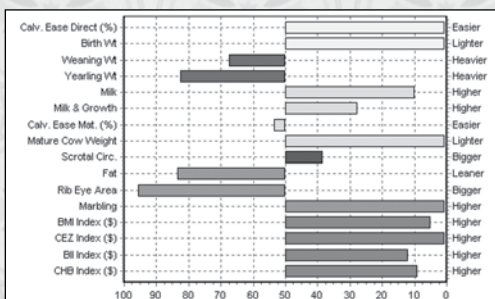
Dam of Wonder

<b>REF D</b>	<b>SHF PROGRESS P20</b>								
	Calved: Feb. 9, 2004			P42481042			H/P/S/D: P		
	<b>BMI\$</b> 23	FELTONS LEGEND 242 (SOD,CHB){HYF} P42016383			FELTONS DOMINO 774 (SOD,CHB){DLF,HYF,IEF}				
	<b>CEZ\$</b> 24				FELTONS G15				
<b>BI\$</b> 19	SHF INTRSTATE D03 G06 ET P24016248			SHF INTERSTATE 20X D03 (SOD,CHB)					
<b>CHB\$</b> 27				MM CISCO LADY 203 (DOD)					
<b>BW</b>	<b>WW</b>	<b>YW</b>	<b>MM</b>	<b>M&amp;G</b>	<b>SC</b>	<b>FAT</b>	<b>REA</b>	<b>MARB</b>	
-2.5	42	62	25	46	0.8	0.019	-0.05	0.43	
<b>CE Score</b>	<b>Act. BW</b>	<b>BW Ratio</b>	<b>Adj. WW</b>	<b>WW Ratio</b>	<b>Adj. YW</b>	<b>YW Ratio</b>	<b>Adj. YH (IN)</b>		
1	89		728		110		50		



**SHF PROGRESS P20**

- Progress is a superior calving ease sire of the breed, having a 90% accuracy. In the Circle A sire test, Progress had more MARB than the Angus reference sires. We continue to use herd sires out of Progress daughters.
- In last year's sale, the Progress daughters averaged over \$10,000.
- Selling 18 sons and three daughters in the sale.
- Semen available from ABS.



T101 daughter of Progress, selling as lot 95

# REFERENCE SIRES



**BAR-H IDEAL 40W**



KR1 Susie 4L —  
Dam of BAR-H Ideal 40W

<b>REF</b>	<b>BAR-H IDEAL 40W</b>							
	Calved: March 24, 2009	P43051117 H/P/S/D: P						
<b>BMIS</b> 18	NJW 45P 139J FULL TANK 134S P42694105	NJW FHF 9710 TANK 45P {CHB}{DLF,HYF,IEF}						
<b>CEZ\$</b> 15		SDL VLY 7C SERENADE 139J {DLF,HYF,IEF}						
<b>BIIS</b> 15	KR1 SUSIE 4L	KR1 DANNY 43H						
<b>CHBS</b> 25	P43051115	KR1 PEARL 44J						
<b>BW</b> 2.9	<b>WW</b> 53	<b>YW</b> 88	<b>MM</b> 18	<b>M&amp;G</b> 44	<b>SC</b> 0.3	<b>FAT</b> 0.002	<b>REA</b> 0.54	<b>MARB</b> 0.01
<b>CE Score</b> 1	<b>Act. BW</b> 88	<b>BW Ratio</b>	<b>Adj. WW</b>	<b>WW Ratio</b>	<b>Adj. YW</b> 1284	<b>YW Ratio</b>	<b>Adj. YH (IN)</b> 51	

- A new set of genetics for us at SHF. Analyzing the progeny, 40W is bringing moderate frame, thick tops and butts and when scanned, big REA.
- Tested in the National Reference Sire test.
- Selling 14 sons in the sale.
- Semen from SHF and GLM Herefords



**KCF BENNETT 3008 M326**



Daughter of KCF Bennett 3008 M326

<b>REF</b>	<b>KCF BENNETT 3008 M326</b>							
	Calved: Sept. 24, 2002	P42361822 H/P/S/D: P						
<b>BMIS</b> 35	RRH MR FELT 3008 {SOD,CHB}{DLF,HYF,IEF} P23703420	FELTONS 517 {SOD,CHB}{HYF}						
<b>CEZ\$</b> 20		RRH MS VICT 6191						
<b>BIIS</b> 32	KCF MISS 459 F284	FELTONS 459						
<b>CHBS</b> 37	P23938259	KCF MISS X4 B156						
<b>BW</b> 4.2	<b>WW</b> 62	<b>YW</b> 98	<b>MM</b> 18	<b>M&amp;G</b> 49	<b>SC</b> 2.0	<b>FAT</b> -0.006	<b>REA</b> 0.52	<b>MARB</b> 0.37
<b>CE Score</b> 1	<b>Act. BW</b> 74	<b>BW Ratio</b> 93	<b>Adj. WW</b> 611	<b>WW Ratio</b> 108	<b>Adj. YW</b> 1171	<b>YW Ratio</b> 110	<b>Adj. YH (IN)</b> 50	

- M326 is the bull that started the performance and carcass movement in the Hereford breed. With a 92% accuracy, M326 is a breed leader in 12 different areas.
- Between M326 and Progress, most all of our herd sires and AI sires are sons of or out of daughters of these breed leading bulls.
- Selling many grandsons and daughters of M326. He will appear on both the top and bottom sides of the pedigrees.
- Semen from SHF.



**PCR 286 MR ADVISOR 502R**



PCR JACKLYN NIKOLE 344N — DAM OF ADVISOR

<b>REF</b>	<b>PCR 286 MR ADVISOR 502R</b>							
	Calved: Feb. 9, 2005	42620083 H/P/S/D: P						
<b>BMIS</b> 31	HUTH FULL HOUSE N003 {CHB} P42409445	RRH MR FELT 3008 {SOD,CHB}{DLF,HYF,IEF}						
<b>CEZ\$</b> 19		K HUTH ENHANTRESS K001						
<b>BIIS</b> 25	PCR JACKLYN NIKOLE 344N {DLF,IEF} P42408229	PCR JACK PHROST 18K						
<b>CHBS</b> 46		PCR VICKI NICOLE 642F						
<b>BW</b> 3.3	<b>WW</b> 68	<b>YW</b> 116	<b>MM</b> 22	<b>M&amp;G</b> 56	<b>SC</b> 1.5	<b>FAT</b> -0.051	<b>REA</b> 0.43	<b>MARB</b> 0.49
<b>CE Score</b> 1	<b>Act. BW</b> 80	<b>BW Ratio</b> 96	<b>Adj. WW</b> 792	<b>WW Ratio</b> 113	<b>Adj. YW</b> 1352	<b>YW Ratio</b> 108	<b>Adj. YH (IN)</b> NA	

- Advisor is a proven trait leader in 12 different areas. He ranks in the top 1% of the breed for growth, scrotal and 3 of the 4 breed indexes.
- We now have daughters in production, and are very pleased with the udder quality and production.
- Selling 15 sons
- Semen from SHF



# SANDHILL FARMS BULLS

<b>Lot 1</b>	<b>SHF YORK 19H Y02</b>							
	Calved: Jan. 6, 2011	P43180994 H/P/S/D: P						
Selling: Terms to be announced.								
<b>BMI\$</b> 28	MSU MF HUDSON 19H (SOD,CHB){HYF}							
<b>CEZ\$</b> 23	P41027599 MSU WNH FELTON 5F (CHB)							
<b>BIIS</b> 24	MSU VICTORIA 9F							
<b>CHB\$</b> 34	SHF PROGRESS P20 (CHB){DLF,HYF,IEF}							
	LOEWEN MISS P20 10W	LOEWEN M326 MISS 39T						
	P42968642							
<b>BW</b> -1.4	<b>WW</b> 54	<b>YW</b> 86	<b>MM</b> 23	<b>M&amp;G</b> 50	<b>SC</b> 1.3	<b>FAT</b> 0.010	<b>REA</b> 0.28	<b>MARB</b> 0.40
<b>CE Score</b> 1	<b>Act. BW</b> 71	<b>BW Ratio</b> 86	<b>Adj. WW</b> 791	<b>WW Ratio</b> 118	<b>Adj. YW</b> 1293	<b>YW Ratio</b> 112	<b>Frame Score</b> 6.0	
<b>Adj. BF Ratio</b>	<b>Adj. REA Ratio</b>	<b>REA/cwt</b>	<b>Adj. MARB Ratio</b>	<b>MARB Ratio</b>	<b>Adj. SC (CM)</b>	<b>Age of Dam</b>	<b>Dam's Production WWR</b>	<b>YWR</b>
0.27-119	14.7-108	1.17	4.08	110	38.09	2	1-86	1-118



Lot 1 — SHF York 19H Y02



Loewen Miss P20 10W — Dam of Lot 1

• I am not sure what else you would ask a young bull to do. Light BW top 1%, great growth top 15%, excellent carcass top 1% on MARB, big scrotal and top 1-2% for all four breed indexes — and he did all this in a contemporary group of 93-head. Add to that, his sire, maternal sire and maternal grandsire have all been tested in multiple reference sire tests with now high EPD accuracies. Physically, his dam is a typical Progress daughter: deep ribbed, beautiful udder and teat placement and quick to rebreed. I really believe this is the future. Terms to be announced.

<b>Lot 2</b>	<b>SHF LIMELIGHT W18 Y83</b>							
	Calved: Feb. 11, 2011	P43181176 H/P/S/D: P						
Selling: Full possession and 1/2 semen interest.								
<b>BMI\$</b> 24	KCF BENNETT 3008 M326 (CHB){DLF,HYF,IEF}							
<b>CEZ\$</b> 17	SHF WONDER M326 W18 ET (DLF,HYF,IEF)							
<b>BIIS</b> 21	P42991698 SHF GOVERNESS 236G L37							
<b>CHB\$</b> 30	SHF PHOENIX P68 U21 (DLF,HYF,IEF)							
	P42894719	HVH MISS HUDSON 83K 8M						
<b>BW</b> 2.4	<b>WW</b> 53	<b>YW</b> 89	<b>MM</b> 21	<b>M&amp;G</b> 47	<b>SC</b> 1.2	<b>FAT</b> 0.010	<b>REA</b> 0.35	<b>MARB</b> 0.29
<b>CE Score</b> 1	<b>Act. BW</b> 88	<b>BW Ratio</b> 100	<b>Adj. WW</b> 727	<b>WW Ratio</b> 109	<b>Adj. YW</b> 1301	<b>YW Ratio</b> 104	<b>Frame Score</b> 6.5	
<b>Adj. BF Ratio</b>	<b>Adj. REA Ratio</b>	<b>REA/cwt</b>	<b>Adj. MARB Ratio</b>	<b>MARB Ratio</b>	<b>Adj. SC (CM)</b>	<b>Age of Dam</b>	<b>Dam's Production WWR</b>	<b>YWR</b>
0.35-111	13.29-93	1.07	4.38	108	40.91	3	2-97	2-107



Lot 2 — SHF Limelight W18 Y83

• Two years ago, Limelight's sire Wonder caused quite a stir. I believe because of the cow family this bull is out of, Limelight is the next step. The Phoenix daughter, U21, is a maternal sister to Rib Eye. U21 and her full sister, U29 have both been flushed here at SHF. Tight udders with short, well placed teats are staples of the cow family. Limelight was the lead bull for us in our 2012 Denver Reserve Champion Pen. Limelight has a bright future here at SHF.

<b>Lot 3</b>	<b>SHF LEVI 4029 Y149</b>							
	Calved: Feb. 22, 2011	P43189202 H/P/S/D: P						
Selling: Full possession and 1/2 semen interest.								
<b>BMI\$</b> 30	JDH 15 WRANGLER 25L (CHB){DLF,HYF,IEF}							
<b>CEZ\$</b> 20	THR THOR 4029 (CHB){DLF,HYF,IEF}							
<b>BIIS</b> 28	P42551314 THR MISS THOR 0266 (DOD){DLF,IEF}							
<b>CHB\$</b> 29	SHF PROGRESS T138							
	P42795811	SHF MISS M326 R130						
<b>BW</b> 2.3	<b>WW</b> 54	<b>YW</b> 81	<b>MM</b> 21	<b>M&amp;G</b> 48	<b>SC</b> 1.3	<b>FAT</b> -0.010	<b>REA</b> 0.49	<b>MARB</b> 0.16
<b>CE Score</b> 1	<b>Act. BW</b> 94	<b>BW Ratio</b> 105	<b>Adj. WW</b> 699	<b>WW Ratio</b> 105	<b>Adj. YW</b> 1192	<b>YW Ratio</b> 96	<b>Frame Score</b> 6.0	
<b>Adj. BF Ratio</b>	<b>Adj. REA Ratio</b>	<b>REA/cwt</b>	<b>Adj. MARB Ratio</b>	<b>MARB Ratio</b>	<b>Adj. SC (CM)</b>	<b>Age of Dam</b>	<b>Dam's Production WWR</b>	<b>YWR</b>
0.28-89	15.15-107	1.34	3.76	92	45.13	3	3-92	3-96



Lot 3 — SHF Levi 4029 Y149



SHF Miss M326 R130 — Grandam of Lot 3

• Levi has been one of the top bulls all year. He is sired by Thor 4029, a new AI bull for us. His dam, T138, Lot 102 in the sale, is also the dam of a Red Hills Polled Herefords herd sire. Levi was part of our Denver pen of bulls. Check out the scrotal measurement of 44 cm.

# SANDHILL FARMS BULLS



**Lot 4 —  
SHF Yankee R117 Y52 ET**

GHC Miss Nancy 98P — Dam of Lot 4



<b>04</b>	<b>SHF YANKEE R117 Y52 ET</b>							
	Calved: Feb. 7, 2011	P43185554 H/P/S/D: P						
Selling: Full possession and 1/2 semen interest.								
<b>BMI\$</b> <b>25</b>	KCF BENNETT 3008 M326 (CHB){DLF,HYF,IEF}							
<b>CEZ\$</b> <b>20</b>	SHF RIB EYE M326 R117 (CHB){DLF,HYF,IEF}							
<b>BIIS</b> <b>22</b>	P42584003 HVH MISS HUDSON 83K 8M							
<b>CHBS</b> <b>29</b>	GHC MISS NANCY 98P							
	P42998234 MCCOY 32K SUSIE 11M							
<b>BW</b> 2.2	<b>WW</b> 53	<b>YW</b> 89	<b>MM</b> 28	<b>M&amp;G</b> 54	<b>SC</b> 1.5	<b>FAT</b> -0.020	<b>REA</b> 0.41	<b>MARB</b> 0.14
<b>CE Score</b> 1	<b>Act. BW</b> 81	<b>BW Ratio</b> ET	<b>Adj. WW</b> 689	<b>WW Ratio</b> ET	<b>Adj. YW</b> 1241	<b>YW Ratio</b> ET	<b>Frame Score</b> 5.8	
<b>Adj. BF Ratio</b> 0.31-94	<b>Adj. REA Ratio</b> 15.23-107	<b>REA/cwt</b> 1.25	<b>Adj. MARB</b> 3.61	<b>MARB Ratio</b> 87	<b>Adj. SC (CM)</b> 39.21	<b>Age of Dam</b> 6	<b>Dam's Production BWR</b> 0	<b>WWR</b> 0

• Yankee is the result of a flush bought from Crittendon Brothers in Canada. A great combination bull that has a super mother. His Indexes rank him at the top of the breed for all traits. Member of our Denver bull pen.



**Lot 5 —  
SHF Yates U38 Y50 ET**

SHF Miss M326 R75 ET — Dam of Lot 5



<b>05</b>	<b>SHF YATES U38 Y50 ET</b>							
	Calved: Feb. 6, 2011	P43185367 H/P/S/D: P						
Selling: Full possession and 3/4 semen interest.								
<b>BMI\$</b> <b>29</b>	SHF RIB EYE M326 R117 (CHB){DLF,HYF,IEF}							
<b>CEZ\$</b> <b>19</b>	SHF VISION R117 U38 (CHB){DLF,IEF}							
<b>BIIS</b> <b>25</b>	P42894861 SHF MISS PROGRESS S03 ET							
<b>CHBS</b> <b>36</b>	SHF MISS M326 R75 ET							
	P42584253 SHF GOVERNESS 236G K61							
<b>BW</b> 3.1	<b>WW</b> 58	<b>YW</b> 84	<b>MM</b> 23	<b>M&amp;G</b> 52	<b>SC</b> 1.4	<b>FAT</b> -0.050	<b>REA</b> 0.45	<b>MARB</b> 0.31
<b>CE Score</b> 1	<b>Act. BW</b> 102	<b>BW Ratio</b> ET	<b>Adj. WW</b> 689	<b>WW Ratio</b> ET	<b>Adj. YW</b> 1211	<b>YW Ratio</b> ET	<b>Frame Score</b> 5.3	
<b>Adj. BF Ratio</b> 0.21-64	<b>Adj. REA Ratio</b> 13.51-95	<b>REA/cwt</b> 1.13	<b>Adj. MARB</b> 3.6	<b>MARB Ratio</b> 86	<b>Adj. SC (CM)</b> 40.18	<b>Age of Dam</b> 5	<b>Dam's Production BWR</b> 2-104	<b>WWR</b> 2-109
							<b>YWR</b> 1-100	

• Yates has some all time top cows in his pedigree. S03, the high selling cow in last year's sale to Kinnear and Glaze, R75, K61 and G06, the dam of Progress and Phoenix. Big hip and big scrotal. Member of our Denver pen.



**Lot 6 —  
SHF Liberty T57 Y88 ET**

SHF Progress T101 — Dam of Lot 6



<b>06</b>	<b>SHF LIBERTY T57 Y88 ET</b>							
	Calved: Feb. 13, 2011	P43181180 H/P/S/D: P						
Selling: Full possession and 1/2 semen interest.								
<b>BMI\$</b> <b>26</b>	SHF RIB EYE M326 R117 (CHB){DLF,HYF,IEF}							
<b>CEZ\$</b> <b>17</b>	SHF TUG R117 T57 (CHB)							
<b>BIIS</b> <b>24</b>	P42795820 SHF BOOMER P606 R80							
<b>CHBS</b> <b>29</b>	SHF PROGRESS T101 (DLF,HYF,IEF)							
	P42795835 SHF BOOMER P606 R17 ET (DLF,HYF,IEF)							
<b>BW</b> 2.4	<b>WW</b> 54	<b>YW</b> 77	<b>MM</b> 27	<b>M&amp;G</b> 54	<b>SC</b> 1.4	<b>FAT</b> 0.070	<b>REA</b> 0.26	<b>MARB</b> 0.47
<b>CE Score</b> 1	<b>Act. BW</b> 104	<b>BW Ratio</b> ET	<b>Adj. WW</b> 728	<b>WW Ratio</b> ET	<b>Adj. YW</b> 1153	<b>YW Ratio</b> ET	<b>Frame Score</b> 5.3	
<b>Adj. BF Ratio</b> 0.47-142	<b>Adj. REA Ratio</b> 14.07-99	<b>REA/cwt</b> 1.26	<b>Adj. MARB</b> 5.29	<b>MARB Ratio</b> 127	<b>Adj. SC (CM)</b> 36.37	<b>Age of Dam</b> 4	<b>Dam's Production BWR</b> 3-101	<b>WWR</b> 2-99
							<b>YWR</b> 2-95	

• When you place Tug and Progress in the same pedigree, you will get MARB. Liberty is in the top 1% for MARB and still exhibits over a 14 sq. in. REA. Add to that, his dam is Lot 99, the lead cow in this year's sale.

# SANDHILL FARMS BULLS

<b>Lot 7</b>	<b>SHF LUCKY 4029 Y40 ET</b>							
	Calved: Feb. 5, 2011 P43189211 H/P/S/D: P							
Selling: Full possession and 3/4 semen interest.								
<b>BMI\$</b> 29	JDH 15 WRANGLER 25L (CHB){DLF,HYF,IEF}							
<b>CEZ\$</b> 17	THR THOR 4029 (CHB){DLF,HYF,IEF}	THR MISS THOR 0266 (DOD){DLF,IEF}						
<b>BIIS</b> 25	KCF BENNETT 3008 M326 (CHB){DLF,HYF,IEF}							
<b>CHB\$</b> 35	SHF MISS M326 R13	SHF GOVERNESS 236G N68						
	P42584026							
<b>BW</b>	<b>WW</b>	<b>YW</b>	<b>MM</b>	<b>M&amp;G</b>	<b>SC</b>	<b>FAT</b>	<b>REA</b>	<b>MARB</b>
3.6	63	105	22	53	1.7	0.030	0.87	0.29
<b>CE Score</b>	<b>Act. BW</b>	<b>BW Ratio</b>	<b>Adj. WW</b>	<b>WW Ratio</b>	<b>Adj. YW</b>	<b>YW Ratio</b>	<b>Frame Score</b>	
1	83	ET	617	ET	1123	ET	5.8	
<b>Adj. BF Ratio</b>	<b>Adj. REA Ratio</b>	<b>REA/cwt</b>	<b>Adj. MARB Ratio</b>	<b>MARB Ratio</b>	<b>Adj. SC (CM)</b>	<b>Age of Dam</b>	<b>Dam's Production WWR</b>	<b>YWR</b>
0.34-132	15.26-111	1.38	3.63	102	41.15	6	0	0



Lot 7 — SHF Lucky 4029 Y40 ET

• Lucky ranks in the top 1% of the breed for YW, REA and top 3% for MARB. This is an awesome combination. He backs this all up with over a 15 sq. in. REA. Cow family goes back to G06, Progress and Phoenix's dam.

<b>Lot 8</b>	<b>SHF LITERAL W18 Y90</b>							
	Calved: Feb. 13, 2011 P43181182 H/P/S/D: P							
Selling: Full possession and 1/2 semen interest.								
<b>BMI\$</b> 30	KCF BENNETT 3008 M326 (CHB){DLF,HYF,IEF}							
<b>CEZ\$</b> 21	SHF WONDER M326 W18 ET (DLF,HYF,IEF)	SHF GOVERNESS 236G L37						
<b>BIIS</b> 29	SHF PROGRESS P20 (CHB){DLF,HYF,IEF}							
<b>CHB\$</b> 25	SHF PROGRESS P20 U74	SHF PHOENIX P68 S30						
	P42894906							
<b>BW</b>	<b>WW</b>	<b>YW</b>	<b>MM</b>	<b>M&amp;G</b>	<b>SC</b>	<b>FAT</b>	<b>REA</b>	<b>MARB</b>
0.7	40	73	19	39	1.7	-0.010	0.15	0.28
<b>CE Score</b>	<b>Act. BW</b>	<b>BW Ratio</b>	<b>Adj. WW</b>	<b>WW Ratio</b>	<b>Adj. YW</b>	<b>YW Ratio</b>	<b>Frame Score</b>	
1	83	94	609	91	1193	103	5.8	
<b>Adj. BF Ratio</b>	<b>Adj. REA Ratio</b>	<b>REA/cwt</b>	<b>Adj. MARB Ratio</b>	<b>MARB Ratio</b>	<b>Adj. SC (CM)</b>	<b>Age of Dam</b>	<b>Dam's Production WWR</b>	<b>YWR</b>
0.26-114	13.64-100	1.2	3.78	102	40.47	3	2-92	2-98



Lot 8 — SHF Literal W18 Y90

• This is the second and last Wonder bull in the sale. This bull's dam was very sick while nursing last summer. I thought she had hardware. But she made it, rebred and is raising another good calf. Keep this in mind when looking at his WW ratio. This bull is a stud.

<b>Lot 9</b>	<b>SHF YAHOO 40W Y37</b>							
	Calved: Feb. 4, 2011 P43185354 H/P/S/D: P							
Selling: Full possession and 3/4 semen interest.								
<b>BMI\$</b> 23	NJW 45P 139J FULL TANK 134S							
<b>CEZ\$</b> 19	BAR-H IDEAL 40W (DLF,HYF,IEF)	KR1 SUSIE 4L						
<b>BIIS</b> 19	R PUCKSTER 2013 (CHB){DLF,HYF,IEF}							
<b>CHB\$</b> 29	SHF LADY W05	SHF RIB EYE R117 T142						
	P42991431							
<b>BW</b>	<b>WW</b>	<b>YW</b>	<b>MM</b>	<b>M&amp;G</b>	<b>SC</b>	<b>FAT</b>	<b>REA</b>	<b>MARB</b>
0.3	54	84	18	45	1.0	0.000	0.56	0.11
<b>CE Score</b>	<b>Act. BW</b>	<b>BW Ratio</b>	<b>Adj. WW</b>	<b>WW Ratio</b>	<b>Adj. YW</b>	<b>YW Ratio</b>	<b>Frame Score</b>	
1	77	92	722	108	1201	104	6.3	
<b>Adj. BF Ratio</b>	<b>Adj. REA Ratio</b>	<b>REA/cwt</b>	<b>Adj. MARB Ratio</b>	<b>MARB Ratio</b>	<b>Adj. SC (CM)</b>	<b>Age of Dam</b>	<b>Dam's Production WWR</b>	<b>YWR</b>
0.34-149	15.44-113	1.39	3.34	90	36.91	2	1-92	1-108



Lot 9 — SHF Yahoo 40W Y37

• Yahoo is the first son to sell out of our herd sire, Ideal 40W. Big topped, attractive and has over a 15 sq. in. REA to prove it. His dam is a feminine, tight uddered Puckster daughter.

# SANDHILL FARMS BULLS



Lot 10 — SHF Langston 502R Y154

<b>10</b>	<b>SHF LANGSTON 502R Y154</b>								
	Calved: Feb. 23, 2011	P43181042 H/P/S/D: P							
Selling: Full possession and 3/4 semen interest.									
<b>BMI\$ 28 CEZ\$ 19 BI\$ 24 CHB\$ 34</b>	PCR 286 MR ADVISOR 502R (CHB){DLF,HYF,IEF}	HUTH FULL HOUSE N003 (CHB)							
	P42620083	PCR JACKLYN NIKOLE 344N (DLF,IEF)							
	RPH ANGIE 74T	SHF PHOENIX M33 P68 (CHB)							
	P42809242	/S LADY MOM 5138R							
<b>BW</b>	<b>WW</b>	<b>YW</b>	<b>MM</b>	<b>M&amp;G</b>	<b>SC</b>	<b>FAT</b>	<b>REA</b>	<b>MARB</b>	
2.5	59	106	22	52	1.7	0.000	0.33	0.27	
<b>CE Score</b>	<b>Act. BW</b>	<b>BW Ratio</b>	<b>Adj. WW</b>	<b>WW Ratio</b>	<b>Adj. YW</b>	<b>YW Ratio</b>	<b>Frame Score</b>		
1	86	96	708	106	1297	112	5.7		
<b>Adj. BF Ratio</b>	<b>Adj. REA Ratio</b>	<b>REA/cwt</b>	<b>Adj. MARB Ratio</b>	<b>MARB Ratio</b>	<b>Adj. SC (CM)</b>	<b>Age of Dam</b>	<b>Dam's Production BWR</b>	<b>WWR</b>	<b>YWR</b>
0.33-145	15.33-112	1.25	3.54	96	40.04	3	2-100	2-103	2-108

• Langston is a top Advisor son out of an outstanding Phoenix daughter. Check out the 106 YW and plus 15 sq. in. REA.



Lot 11 — SHF Length 33T Y113

<b>11</b>	<b>SHF LENGTH 33T Y113</b>								
	Calved: Feb. 16, 2011	P43181009 H/P/S/D: P							
Selling: Full possession and 3/4 semen interest.									
<b>BMI\$ 21 CEZ\$ 16 BI\$ 19 CHB\$ 25</b>	LOEWEN M326 SIR 33T (CHB){DLF,IEF}	KCF BENNETT 3008 M326 (CHB){DLF,HYF,IEF}							
	P42778601	HVH OKSANA 4L 33N (DLF,HYF,IEF)							
	SHF SOLDIER S66 U144	SHF SOLDIER 13P S66 (CHB)							
	P42894615	SHF GOVERNESS 236G N75							
<b>BW</b>	<b>WW</b>	<b>YW</b>	<b>MM</b>	<b>M&amp;G</b>	<b>SC</b>	<b>FAT</b>	<b>REA</b>	<b>MARB</b>	
3.6	53	74	16	43	0.9	0.020	0.45	0.13	
<b>CE Score</b>	<b>Act. BW</b>	<b>BW Ratio</b>	<b>Adj. WW</b>	<b>WW Ratio</b>	<b>Adj. YW</b>	<b>YW Ratio</b>	<b>Frame Score</b>		
1	89	101	669	100	1125	97	6.7		
<b>Adj. BF Ratio</b>	<b>Adj. REA Ratio</b>	<b>REA/cwt</b>	<b>Adj. MARB Ratio</b>	<b>MARB Ratio</b>	<b>Adj. SC (CM)</b>	<b>Age of Dam</b>	<b>Dam's Production BWR</b>	<b>WWR</b>	<b>YWR</b>
0.22-97	15.09-110	1.42	3.54	96	37	3	2-88	2-96	1-97

• Length is a super balanced son of 33T, an M326 son we used from John Loewen. Another plus 15 sq. in. REA. Cow family goes back to one of the best Governor daughters we ever bred.



Lot 12 — SHF Lamar U38 Y140

<b>12</b>	<b>SHF LAMAR U38 Y140</b>								
	Calved: Feb. 20, 2011	P43181031 H/P/S/D: P							
Selling: Full possession and 3/4 semen interest.									
<b>BMI\$ 27 CEZ\$ 18 BI\$ 24 CHB\$ 35</b>	SHF VISION R117 U38 (CHB){DLF,IEF}	SHF RIB EYE M326 R117 (CHB){DLF,HYF,IEF}							
	P42894861	SHF MISS PROGRESS S03 ET							
	SHF MISS M326 T23 ET	KCF BENNETT 3008 M326 (CHB){DLF,HYF,IEF}							
	P42795941	SHF MISS 105A M01							
<b>BW</b>	<b>WW</b>	<b>YW</b>	<b>MM</b>	<b>M&amp;G</b>	<b>SC</b>	<b>FAT</b>	<b>REA</b>	<b>MARB</b>	
3.6	58	88	21	50	1.3	-0.020	0.51	0.32	
<b>CE Score</b>	<b>Act. BW</b>	<b>BW Ratio</b>	<b>Adj. WW</b>	<b>WW Ratio</b>	<b>Adj. YW</b>	<b>YW Ratio</b>	<b>Frame Score</b>		
1	99	110	670	100	1196	103	6.7		
<b>Adj. BF Ratio</b>	<b>Adj. REA Ratio</b>	<b>REA/cwt</b>	<b>Adj. MARB Ratio</b>	<b>MARB Ratio</b>	<b>Adj. SC (CM)</b>	<b>Age of Dam</b>	<b>Dam's Production BWR</b>	<b>WWR</b>	<b>YWR</b>
0.22-97	15.14-111	1.33	3.89	105	36.85	4	3-115	3-103	3-103

• Lamar is a Vision son whose dam is one of many flush sisters in production here. Some of them we have flushed also. One of them, T16, sells as Lot 100. Top 1% Indexes for BMI\$ and CHB\$.

SHF Miss M326 T23 Et — Dam of Lot 12



# SANDHILL FARMS BULLS

<b>13</b>	<b>SHF LEE X512 Y09</b>							
	Calved: Jan. 14, 2011	P43190530 H/P/S/D: P						
Selling: Full possession and 3/4 semen interest.								
<b>BMI\$</b> <b>20</b>	(DLF,HYF,IEF)	EFBEEF SCHU-LAR PROFICIENT N093 (CHB)						
<b>CEZ\$</b> <b>17</b>	JET MR X512 (CHB){DLF,HYF,IEF}	MR MS Y927 (DOD)						
<b>BIIS</b> <b>17</b>	42602761	R PUCKSTER 2013 (CHB){DLF,HYF,IEF}						
<b>CHB\$</b> <b>27</b>	LOEWEN 2013 MISS 6W P42968662	LOEWEN P606 MISS 54S ET						
<b>BW</b> 1.7	<b>WW</b> 57	<b>YW</b> 87	<b>MM</b> 21	<b>M&amp;G</b> 49	<b>SC</b> 1.0	<b>FAT</b> 0.040	<b>REA</b> 0.45	<b>MARB</b> 0.15
<b>CE Score</b> 1	<b>Act. BW</b> 87	<b>BW Ratio</b> 105	<b>Adj. WW</b> 754	<b>WW Ratio</b> 113	<b>Adj. YW</b> 1249	<b>YW Ratio</b> 108	<b>Frame Score</b> 6.8	
<b>Adj. BF Ratio</b> 0.42-185	<b>Adj. REA Ratio</b> 16.13-118	<b>REA/cwt</b> 1.35	<b>Adj. MARB Ratio</b> 3.38	<b>MARB Ratio</b> 91	<b>Adj. SC (CM)</b> 36.31	<b>Age of Dam</b> 2	<b>Dam's Production BWR</b> 1-105	<b>Dam's Production WWR</b> 1-113
							<b>YWR</b> 1-108	



Lot 13 — SHF Lee X512 Y09

- A nice spread bull with a big REA, over 16 sq. in. Ratioed 113 out of a first calf heifer.

<b>14</b>	<b>SHF YIELD U38 Y53 ET</b>							
	Calved: Feb. 7, 2011	P43181153 H/P/S/D: P						
Selling: Full possession and 3/4 semen interest.								
<b>BMI\$</b> <b>28</b>	SHF VISION R117 U38 (CHB){DLF,IEF}	SHF RIB EYE M326 R117 (CHB){DLF,HYF,IEF}						
<b>CEZ\$</b> <b>20</b>	P42894861	SHF MISS PROGRESS S03 ET						
<b>BIIS</b> <b>24</b>	SHF MISS M326 T16 ET (DLF,HYF,IEF)	KCF BENNETT 3008 M326 (CHB){DLF,HYF,IEF}						
<b>CHB\$</b> <b>32</b>	P42795994	SHF MISS 105A M01						
<b>BW</b> 2	<b>WW</b> 55	<b>YW</b> 80	<b>MM</b> 21	<b>M&amp;G</b> 48	<b>SC</b> 1.3	<b>FAT</b> -0.030	<b>REA</b> 0.46	<b>MARB</b> 0.24
<b>CE Score</b> 1	<b>Act. BW</b> 95	<b>BW Ratio</b> ET	<b>Adj. WW</b> 679	<b>WW Ratio</b> ET	<b>Adj. YW</b> 1226	<b>YW Ratio</b> ET	<b>Frame Score</b> 5.7	
<b>Adj. BF Ratio</b> 0.19-74	<b>Adj. REA Ratio</b> 13.27-97	<b>REA/cwt</b> 1.1	<b>Adj. MARB Ratio</b> 2.86	<b>MARB Ratio</b> 81	<b>Adj. SC (CM)</b> 35.19	<b>Age of Dam</b> 4	<b>Dam's Production BWR</b> 3-99	<b>Dam's Production WWR</b> 3-100
							<b>YWR</b> 3-105	



SHF MISS M326 T16 ET — Dam of Lots 14 and 15

- Here is a full brother in blood to Lot 12. A big, stout Vision son whose donor dam sells as Lot 100.

<b>15</b>	<b>SHF LANDLORD 43W Y231</b>							
	Calved: March 19, 2011	P43181119 H/P/S/D: P						
Selling: Full possession and 3/4 semen interest.								
<b>BMI\$</b> <b>26</b>	LOEWEN 33T 5S 43W	LOEWEN M326 SIR 33T (CHB){DLF,IEF}						
<b>CEZ\$</b> <b>17</b>	P42981997	HVH QUEEN P35 5S (DOD){DLF,HYF,IEF}						
<b>BIIS</b> <b>22</b>	SHF MISS M326 T16 ET (DLF,HYF,IEF)	KCF BENNETT 3008 M326 (CHB){DLF,HYF,IEF}						
<b>CHB\$</b> <b>33</b>	P42795994	SHF MISS 105A M01						
<b>BW</b> 4.4	<b>WW</b> 60	<b>YW</b> 106	<b>MM</b> 20	<b>M&amp;G</b> 50	<b>SC</b> 1.5	<b>FAT</b> 0.010	<b>REA</b> 0.59	<b>MARB</b> 0.18
<b>CE Score</b> 1	<b>Act. BW</b> 95	<b>BW Ratio</b> 107	<b>Adj. WW</b> 646	<b>WW Ratio</b> 103	<b>Adj. YW</b> 1241	<b>YW Ratio</b> 112	<b>Frame Score</b> 5.2	
<b>Adj. BF Ratio</b> 0.24-105	<b>Adj. REA Ratio</b> 13.91-102	<b>REA/cwt</b> 1.23	<b>Adj. MARB Ratio</b> 4.17	<b>MARB Ratio</b> 113	<b>Adj. SC (CM)</b> 38.7	<b>Age of Dam</b> 4	<b>Dam's Production BWR</b> 3-99	<b>Dam's Production WWR</b> 3-100
							<b>YWR</b> 3-105	

- Here is the natural son of T16 and maternal brother to the previous lot. We flushed T16 to Vision, then bred her back for her natural calf. Look at his yearling ratio of 112 and MARB ratio of 113.

Information overload simplified for the commercial or purebred cattleman. Indexes that affect your bottom line:

#### BMI Index

- **Black cow \$Index** — Combination of weighted traits that affect the bottom line when mating the Hereford bull on black cows.

#### CEZ Index

- **Heifer bull \$Index** — Animal's potential for use on heifers.

#### BII Index

- **Brahman \$Index** — Similar to BMI index, but weighted heavier for traits that will make Brahman cattle more profitable.

#### CHB Index

- **Feedlot and carcass \$Index** — Animal's ability to perform in the feedlot and on the rail.

#### What \$ indexes can do for you.

- Assist and hasten your selection process.
- Analyze and weigh traits economically.
- Create \$\$\$ you can take to the bank.
- Measure how your breeder has been selecting traits that affect your bottom line. Adapted with permission from Rausch Herefords.

# SANDHILL FARMS BULLS

<b>16</b>		<b>SHF YANCY P20 Y01</b>	
Calved: Jan. 5, 2011		P43180993	H/P/S/D: P
Selling: Full possession and 3/4 semen interest.			
<b>BMI\$</b> <b>25</b>	FELTONS LEGEND 242 {SOD,CHB}{HYF}		
<b>CEZ\$</b> <b>21</b>	SHF PROGRESS P20 {CHB}{DLF,HYF,IEF}		
<b>BIIS</b> <b>23</b>	SHF INTRSTATE D03 G06 ET		
<b>CHB\$</b> <b>26</b>	KCF BENNETT 3008 M326 {CHB}{DLF,HYF,IEF}		
	LOEWEN M326 MISS 25T		
	P42778596		
	HVH VICTORIA P606 58P ET {DLF,HYF,IEF}		
<b>BW</b>	<b>WW</b>	<b>YW</b>	<b>MM</b>
-0.4	43	59	25
	<b>M&amp;G</b>	<b>SC</b>	<b>FAT</b>
	46	1.1	0.010
	<b>REA</b>	<b>MARB</b>	
	0.19	0.35	
<b>CE Score</b>	<b>Act. BW</b>	<b>BW Ratio</b>	<b>Adj. WW</b>
5	78	87	641
	<b>WW Ratio</b>	<b>Adj. YW</b>	<b>YW Ratio</b>
	96	1062	92
	<b>Frame Score</b>		
	6.3		
<b>Adj. BF Ratio</b>	<b>Adj. REA Ratio</b>	<b>REA/cwt</b>	<b>Adj. MARB Ratio</b>
0.24-105	12.81-94	1.18	4.12
	<b>MARB Ratio</b>	<b>Adj. SC (CM)</b>	<b>Age of Dam</b>
	111	35.54	4
	<b>BWR</b>	<b>Dam's Production WWR</b>	<b>YWR</b>
	3-98	3-101	2-101

• Yancy is a negative BW son of Progress who is also in the top 1% of the breed for calving ease. Should make some super females.



Weaning bull calves

<b>17</b>		<b>SHF YANIS X512 Y04</b>	
Calved: Jan. 10, 2011		P43190527	H/P/S/D: P
Selling: Full possession and 3/4 semen interest.			
<b>BMI\$</b> <b>23</b>	EFBEEF SCHU-LAR PROFICIENT N093 {CHB}{DLF,HYF,IEF}		
<b>CEZ\$</b> <b>21</b>	JET MR X512 {CHB}{DLF,HYF,IEF}		
<b>BIIS</b> <b>19</b>	42602761		
<b>CHB\$</b> <b>24</b>	MR MS Y927 {DOD}		
	R PUCKSTER 2013 {CHB}{DLF,HYF,IEF}		
	LOEWEN 2013 MISS 53T 5W		
	P42968639		
	LOEWEN R125 MISS 53T {DLF,HYF,IEF}		
<b>BW</b>	<b>WW</b>	<b>YW</b>	<b>MM</b>
-1.6	52	81	17
	<b>M&amp;G</b>	<b>SC</b>	<b>FAT</b>
	43	1.1	0.040
	<b>REA</b>	<b>MARB</b>	
	0.39	0.08	
<b>CE Score</b>	<b>Act. BW</b>	<b>BW Ratio</b>	<b>Adj. WW</b>
1	72	87	686
	<b>WW Ratio</b>	<b>Adj. YW</b>	<b>YW Ratio</b>
	103	1190	103
	<b>Frame Score</b>		
	6.8		
<b>Adj. BF Ratio</b>	<b>Adj. REA Ratio</b>	<b>REA/cwt</b>	<b>Adj. MARB Ratio</b>
0.34-149	14.53-106	1.27	3.1
	<b>MARB Ratio</b>	<b>Adj. SC (CM)</b>	<b>Age of Dam</b>
	84	36.7	2
	<b>BWR</b>	<b>Dam's Production WWR</b>	<b>YWR</b>
	1-87	1-103	1-103

• I believe this is a bonafide spread bull. A negative BW of -1.6 with a yearling wt. of 81 lb. He combines this with a 106 ratio on REA. It was a little cold when he was born.

<b>18</b>		<b>SHF LARK 33T Y26</b>	
Calved: Jan. 28, 2011		P43189210	H/P/S/D: P
Selling: Full possession and 3/4 semen interest.			
<b>BMI\$</b> <b>18</b>	KCF BENNETT 3008 M326 {CHB}{DLF,HYF,IEF}		
<b>CEZ\$</b> <b>16</b>	LOEWEN M326 SIR 33T {CHB}{DLF,IEF}		
<b>BIIS</b> <b>14</b>	P42778601		
<b>CHB\$</b> <b>25</b>	HVH OKSANA 4L 33N {DLF,HYF,IEF}		
	SHF MARSHAL 236G M33 {SOD,CHB}		
	SHF QUEEN M33 U28 ET		
	P42894792		
	SHF GOVERNESS 236G L37		
<b>BW</b>	<b>WW</b>	<b>YW</b>	<b>MM</b>
2.6	52	86	17
	<b>M&amp;G</b>	<b>SC</b>	<b>FAT</b>
	43	0.7	0.010
	<b>REA</b>	<b>MARB</b>	
	0.57	0.03	
<b>CE Score</b>	<b>Act. BW</b>	<b>BW Ratio</b>	<b>Adj. WW</b>
1	86	98	640
	<b>WW Ratio</b>	<b>Adj. YW</b>	<b>YW Ratio</b>
	96	1161	100
	<b>Frame Score</b>		
	5.8		
<b>Adj. BF Ratio</b>	<b>Adj. REA Ratio</b>	<b>REA/cwt</b>	<b>Adj. MARB Ratio</b>
0.2-88	12.71-93	1.12	3.19
	<b>MARB Ratio</b>	<b>Adj. SC (CM)</b>	<b>Age of Dam</b>
	86	32.37	3
	<b>BWR</b>	<b>Dam's Production WWR</b>	<b>YWR</b>
	2-90	1-96	1-100

• Lark is an M326 grandson whose cow family is one of the best. This bull has some of the same genetics as Wonder plus an added shot of Marshal.

<b>19</b>		<b>SHF LUMBER P20 Y63</b>	
Calved: Feb. 8, 2011		P43181162	H/P/S/D: P
Selling: Full possession and 3/4 semen interest.			
<b>BMI\$</b> <b>29</b>	FELTONS LEGEND 242 {SOD,CHB}{HYF}		
<b>CEZ\$</b> <b>20</b>	SHF PROGRESS P20 {CHB}{DLF,HYF,IEF}		
<b>BIIS</b> <b>26</b>	SHF INTRSTATE D03 G06 ET		
<b>CHB\$</b> <b>32</b>	SHF TREASURE R117 T58 {CHB}		
	SHF CISCO T58 W170		
	P42991496		
	SHF MISS M326 R20 ET		
<b>BW</b>	<b>WW</b>	<b>YW</b>	<b>MM</b>
2.7	53	92	25
	<b>M&amp;G</b>	<b>SC</b>	<b>FAT</b>
	51	1.7	0.000
	<b>REA</b>	<b>MARB</b>	
	0.19	0.34	
<b>CE Score</b>	<b>Act. BW</b>	<b>BW Ratio</b>	<b>Adj. WW</b>
1	87	105	698
	<b>WW Ratio</b>	<b>Adj. YW</b>	<b>YW Ratio</b>
	104	1252	108
	<b>Frame Score</b>		
	6.9		
<b>Adj. BF Ratio</b>	<b>Adj. REA Ratio</b>	<b>REA/cwt</b>	<b>Adj. MARB Ratio</b>
0.22-97	12.74-93	1.11	3.89
	<b>MARB Ratio</b>	<b>Adj. SC (CM)</b>	<b>Age of Dam</b>
	105	40.15	2
	<b>BWR</b>	<b>Dam's Production WWR</b>	<b>YWR</b>
	1-105	1-104	1-108

• Lumber is packing some serious wood. He is in the top 1% of three out of four breed Indexes. The third, he is in the top 3%. Out of a very good Treasure daughter.

<b>20</b>		<b>SHF LUCAS 40W Y73 ET</b>	
Calved: Feb. 10, 2011		P43185359	H/P/S/D: P
Selling: Full possession and 3/4 semen interest.			
<b>BMI\$</b> <b>21</b>	NJW 45P 139J FULL TANK 134S		
<b>CEZ\$</b> <b>17</b>	BAR-H IDEAL 40W {DLF,HYF,IEF}		
<b>BIIS</b> <b>18</b>	P43051117		
<b>CHB\$</b> <b>24</b>	KR1 SUSIE 4L		
	SHF RIB EYE M326 R117 {CHB}{DLF,HYF,IEF}		
	SHF RIB EYE R117 T130 {DLF,HYF,IEF}		
	P42795902		
	SHF GOVERNESS 236G K42 {DOD}		
<b>BW</b>	<b>WW</b>	<b>YW</b>	<b>MM</b>
2.2	51	79	21
	<b>M&amp;G</b>	<b>SC</b>	<b>FAT</b>
	46	1.0	0.020
	<b>REA</b>	<b>MARB</b>	
	0.38	0.12	
<b>CE Score</b>	<b>Act. BW</b>	<b>BW Ratio</b>	<b>Adj. WW</b>
1	90	ET	658
	<b>WW Ratio</b>	<b>Adj. YW</b>	<b>YW Ratio</b>
	ET	1077	ET
	<b>Frame Score</b>		
	6.3		
<b>Adj. BF Ratio</b>	<b>Adj. REA Ratio</b>	<b>REA/cwt</b>	<b>Adj. MARB Ratio</b>
0.35-136	13.62-99	1.3	3.49
	<b>MARB Ratio</b>	<b>Adj. SC (CM)</b>	<b>Age of Dam</b>
	98	37.29	4
	<b>BWR</b>	<b>Dam's Production WWR</b>	<b>YWR</b>
	3-98	3-103	3-104

• Here is an ET son of Ideal 40W whose Rib Eye dam is a full sister to Marshal. None of that matters unless he is good. I think you will enjoy looking over this bull.

# SANDHILL FARMS BULLS

<b>21</b>	<b>SHF LONDON P20 Y97</b>							
	Calved: Feb. 13, 2011	P43181187 H/P/S/D: P						
Selling: Full possession and 3/4 semen interest.								
<b>BMI\$</b> <b>20</b>	FELTONS LEGEND 242 {SOD,CHB}{HYF}							
<b>CEZ\$</b> <b>17</b>	SHF PROGRESS P20 {CHB}{DLF,HYF,IEF}	SHF INTRSTATE D03 G06 ET						
<b>BIIS</b> <b>16</b>	SHF TAHOE R117 T100 {CHB}							
<b>CHB\$</b> <b>30</b>	SHF 30U T100 W55	SHF PHOENIX P68 S43						
	P42991552							
<b>BW</b>	<b>WW</b>	<b>YW</b>	<b>MM</b>	<b>M&amp;G</b>	<b>SC</b>	<b>FAT</b>	<b>REA</b>	<b>MARB</b>
3.1	54	85	22	49	0.8	0.010	0.15	0.29
<b>CE Score</b>	<b>Act. BW</b>	<b>BW Ratio</b>	<b>Adj. WW</b>	<b>WW Ratio</b>	<b>Adj. YW</b>	<b>YW Ratio</b>	<b>Frame Score</b>	
1	93	112	654	98	1156	100	5.8	
<b>Adj. BF Ratio</b>	<b>Adj. REA Ratio</b>	<b>REA/cwt</b>	<b>Adj. MARB Ratio</b>	<b>MARB Ratio</b>	<b>Adj. SC (CM)</b>	<b>Age of Dam</b>	<b>Dam's Production WWR</b>	<b>YWR</b>
0.24-105	12.41-91	1.17	3.7	100	34.08	2	1-112	1-98
								1-100



Customer visit

- London's dam is out of Tahoe. Tahoe went to Canada in our first sale and is making a name for himself north of the border. This bull will sire muscle and good udders.

<b>22</b>	<b>SHF LEVEL 40W Y122</b>							
	Calved: Feb. 17, 2011	43181017 H/P/S/D: P						
Selling: Full possession and 3/4 semen interest.								
<b>BMI\$</b> <b>24</b>	NJW 45P 139J FULL TANK 134S							
<b>CEZ\$</b> <b>19</b>	BAR-H IDEAL 40W {DLF,HYF,IEF}	KR1 SUSIE 4L						
<b>BIIS</b> <b>22</b>	SHF RIB EYE M326 R117 {CHB}{DLF,HYF,IEF}							
<b>CHB\$</b> <b>26</b>	SHF RIB EYE R117 U48	SHF MISS PROGRESS S08 ET						
	P42894871							
<b>BW</b>	<b>WW</b>	<b>YW</b>	<b>MM</b>	<b>M&amp;G</b>	<b>SC</b>	<b>FAT</b>	<b>REA</b>	<b>MARB</b>
1.6	50	79	21	46	1.3	0.000	0.31	0.16
<b>CE Score</b>	<b>Act. BW</b>	<b>BW Ratio</b>	<b>Adj. WW</b>	<b>WW Ratio</b>	<b>Adj. YW</b>	<b>YW Ratio</b>	<b>Frame Score</b>	
1	86	98	660	99	1162	101	6.3	
<b>Adj. BF Ratio</b>	<b>Adj. REA Ratio</b>	<b>REA/cwt</b>	<b>Adj. MARB Ratio</b>	<b>MARB Ratio</b>	<b>Adj. SC (CM)</b>	<b>Age of Dam</b>	<b>Dam's Production WWR</b>	<b>YWR</b>
0.29-127	13.04-95	1.19	3.26	88	38.02	4	2-103	2-104
								2-105



Lot 22 — SHF Level 40W Y122

- Level's dam is a full sister to our herd sire, Vision. Vision is being widely used across the country and has been proven in the National Reference Sire test. U48 is one of our best cows.

<b>23</b>	<b>SHF LOUIS 40W Y199</b>							
	Calved: March 6, 2011	P43181084 H/P/S/D: P						
Selling: Full possession and 3/4 semen interest.								
<b>BMI\$</b> <b>18</b>	NJW 45P 139J FULL TANK 134S							
<b>CEZ\$</b> <b>16</b>	BAR-H IDEAL 40W {DLF,HYF,IEF}	KR1 SUSIE 4L						
<b>BIIS</b> <b>14</b>	SHF PROGRESS P20 {CHB}{DLF,HYF,IEF}							
<b>CHB\$</b> <b>29</b>	SHF PROGRESS P20 U16 ET {DLF,HYF,IEF}	SHF MISS 105A M01						
	P42894678							
<b>BW</b>	<b>WW</b>	<b>YW</b>	<b>MM</b>	<b>M&amp;G</b>	<b>SC</b>	<b>FAT</b>	<b>REA</b>	<b>MARB</b>
2.5	56	95	21	49	0.8	0.010	0.53	0.10
<b>CE Score</b>	<b>Act. BW</b>	<b>BW Ratio</b>	<b>Adj. WW</b>	<b>WW Ratio</b>	<b>Adj. YW</b>	<b>YW Ratio</b>	<b>Frame Score</b>	
1	91	105	701	111	1195	107	6.4	
<b>Adj. BF Ratio</b>	<b>Adj. REA Ratio</b>	<b>REA/cwt</b>	<b>Adj. MARB Ratio</b>	<b>MARB Ratio</b>	<b>Adj. SC (CM)</b>	<b>Age of Dam</b>	<b>Dam's Production WWR</b>	<b>YWR</b>
0.27-119	14.96-109	1.37	3.6	97	35.41	3	2-103	2-111
								2-108



Lot 23 — SHF Louis 40W Y199

- Louis has a spread EPD range of 2.5 BW to 95 YW. He also exhibits a near 15 sq. in. REA. The dam of Louis, U16, has been in our donor program, as has her full sister, U06.

# SANDHILL FARMS BULLS



**SHF Governess 236G L37 — Dam of Lot 68, grandam of Lots 24 and 33**

<b>24</b>	<b>SHF LANCASTER 502R Y224</b>	
	Calved: March 15, 2011 P43181112 H/P/S/D: P	
Selling: Full possession and 3/4 semen interest.		
<b>BMI\$</b> <b>25</b>	HUTH FULL HOUSE N003 {CHB}	
<b>CEZ\$</b> <b>16</b>	PCR 286 MR ADVISOR 502R {CHB}{DLF,HYF,IEF}	
<b>BIIS</b> <b>21</b>	PCR JACKLYN NIKOLE 344N {DLF,IEF}	
<b>CHBS\$</b> <b>36</b>	SHF RADAR M326 R125 {CHB}{DLF,HYF,IEF}	
	SHF RADAR R125 T07 ET {DLF,IEF}	
	SHF GOVERNESS 236G L37	
<b>BW</b> 2.6	<b>WW</b> 61	<b>YW</b> 99
<b>MM</b> 19	<b>M&amp;G</b> 49	<b>SC</b> 1.1
<b>FAT</b> -0.020	<b>REA</b> 0.52	<b>MARB</b> 0.31
<b>CE Score</b> 1	<b>Act. BW</b> 87	<b>BW Ratio</b> 98
<b>Adj. WW</b> 671	<b>WW Ratio</b> 107	<b>Adj. YW</b> 1145
<b>YW Ratio</b> 103	<b>Frame Score</b> 6.5	
<b>Adj. BF Ratio</b>	<b>Adj. REA Ratio</b>	<b>REA/cwt</b>
<b>Adj. MARB Ratio</b>	<b>MARB Ratio</b>	<b>Adj. SC (CM)</b>
<b>Age of Dam</b>	<b>BWR</b>	<b>Dam's Production WWR</b>
<b>YWR</b>		
0.16-70	15.41-113	1.48
3.65	98	35.45
4	3-86	3-103
3-100		

• Four years in a row, we have flushed Lancaster's dam and then bred her back for a natural calf. Each year she breeds back and produces one of the best. She is from the same cow family as herd sire Wonder. When you get calves out of this bull, you will see why we think so much of this cow.



**NJW 12E Prairie 80L — Grandam of Lot 25**

<b>25</b>	<b>SHF LASSO P20 Y30</b>	
	Calved: Jan. 30, 2011 P43181141 H/P/S/D: P	
Selling: Full possession and 3/4 semen interest.		
<b>BMI\$</b> <b>19</b>	FELTONS LEGEND 242 {SOD,CHB}{HYF}	
<b>CEZ\$</b> <b>18</b>	SHF PROGRESS P20 {CHB}{DLF,HYF,IEF}	
<b>BIIS</b> <b>14</b>	SHF INTRSTATE D03 G06 ET	
<b>CHBS\$</b> <b>28</b>	THM DURANGO 4037 {CHB}{DLF,HYF,IEF}	
	SHF PRAIRIE 4037 W24 ET	
	NJW 12E PRAIRIE 80L {DLF,HYF,IEF}	
<b>BW</b> 2.8	<b>WW</b> 55	<b>YW</b> 83
<b>MM</b> 24	<b>M&amp;G</b> 51	<b>SC</b> 0.7
<b>FAT</b> 0.000	<b>REA</b> 0.15	<b>MARB</b> 0.18
<b>CE Score</b> 1	<b>Act. BW</b> 93	<b>BW Ratio</b> 112
<b>Adj. WW</b> 747	<b>WW Ratio</b> 112	<b>Adj. YW</b> 1206
<b>YW Ratio</b> 104	<b>Frame Score</b> 6.3	
<b>Adj. BF Ratio</b>	<b>Adj. REA Ratio</b>	<b>REA/cwt</b>
<b>Adj. MARB Ratio</b>	<b>MARB Ratio</b>	<b>Adj. SC (CM)</b>
<b>Age of Dam</b>	<b>BWR</b>	<b>Dam's Production WWR</b>
<b>YWR</b>		
0.29-127	12.92-95	1.15
3.97	107	36.26
2	1-112	1-112
1-104		

• A balanced EPD profiling son of Progress. His dam, W24, is a very feminine, sweet uddered daughter of Durango.



**South American Tour, July 2011**

<b>26</b>	<b>SHF YALE P20 Y08</b>	
	Calved: Jan. 14, 2011 P43180997 H/P/S/D: P	
Selling: Full possession and 3/4 semen interest.		
<b>BMI\$</b> <b>25</b>	FELTONS LEGEND 242 {SOD,CHB}{HYF}	
<b>CEZ\$</b> <b>22</b>	SHF PROGRESS P20 {CHB}{DLF,HYF,IEF}	
<b>BIIS</b> <b>21</b>	SHF INTRSTATE D03 G06 ET	
<b>CHBS\$</b> <b>31</b>	KCF BENNETT 3008 M326 {CHB}{DLF,HYF,IEF}	
	LOEWEN MISS M326 60U	
	HUTH BELLA M020 P045 {DLF,HYF,IEF}	
<b>BW</b> -1	<b>WW</b> 51	<b>YW</b> 77
<b>MM</b> 21	<b>M&amp;G</b> 47	<b>SC</b> 1.0
<b>FAT</b> 0.030	<b>REA</b> 0.23	<b>MARB</b> 0.39
<b>CE Score</b> 1	<b>Act. BW</b> 72	<b>BW Ratio</b> 85
<b>Adj. WW</b> 704	<b>WW Ratio</b> 105	<b>Adj. YW</b> 1168
<b>YW Ratio</b> 101	<b>Frame Score</b> 5.6	
<b>Adj. BF Ratio</b>	<b>Adj. REA Ratio</b>	<b>REA/cwt</b>
<b>Adj. MARB Ratio</b>	<b>MARB Ratio</b>	<b>Adj. SC (CM)</b>
<b>Age of Dam</b>	<b>BWR</b>	<b>Dam's Production WWR</b>
<b>YWR</b>		
0.24-105	14.88-109	1.31
4.04	109	35.2
2	1-85	1-105
1-101		

• Here is a negative BW bull with a 109 ratio on both MARB and REA. Topping that off, his CEZ\$ Index ranks him in the top 1% of the breed.



# SANDHILL FARMS BULLS

<b>27</b>	<b>SHF LOGAN 40W Y49 ET</b> Calved: Feb. 6, 2011 P43185356 H/P/S/D: P
Selling: Full possession and 3/4 semen interest.	
<b>BMI\$</b> <b>21</b> <b>CEZ\$</b> <b>17</b> <b>BIIS</b> <b>18</b> <b>CHB\$</b> <b>25</b>	BAR-H IDEAL 40W (DLF,HYF,IEF) NJW 45P 139J FULL TANK 134S P43051117 KR1 SUSIE 4L SHF RIB EYE M326 R117 (CHB)(DLF,HYF,IEF) SHF RIB EYE R117 T130 (DLF,HYF,IEF) SHF GOVERNESS 236G K42 (DOD) P42795902
<b>BW</b> 2.2 <b>WW</b> 51 <b>YW</b> 79 <b>MM</b> 21 <b>M&amp;G</b> 46 <b>SC</b> 1.0 <b>FAT</b> 0.010 <b>REA</b> 0.53 <b>MARB</b> 0.10	
<b>CE Score</b> 1 <b>Act. BW</b> 90 <b>BW Ratio</b> ET <b>Adj. WW</b> 648 <b>WW Ratio</b> ET <b>Adj. YW</b> 1100 <b>YW Ratio</b> ET <b>Frame Score</b> 5.8	
<b>Adj. BF Ratio</b> 0.32-124 <b>Adj. REA Ratio</b> 15.31-112 <b>REA/cwt</b> 1.42 <b>Adj. MARB Ratio</b> 3.25 <b>MARB Ratio</b> 92 <b>Adj. SC (CM)</b> 33.65 <b>Age of Dam</b> 4 <b>BWR</b> 3-98 <b>Dam's Production WWR</b> 3-103 <b>YWR</b> 3-104	



Sale Day

- Another ET son of Ideal 40W and out of the donor T130. I believe these sons of 40W will sire some top performing progeny. This bull, Logan, has an plus 15 sq. in. REA.

<b>28</b>	<b>SHF LODESTAR P20 Y98</b> Calved: Feb. 14, 2011 P43181188 H/P/S/D: P
Selling: Full possession and 3/4 semen interest.	
<b>BMI\$</b> <b>24</b> <b>CEZ\$</b> <b>22</b> <b>BIIS</b> <b>19</b> <b>CHB\$</b> <b>30</b>	SHF PROGRESS P20 (CHB)(DLF,HYF,IEF) FELTONS LEGEND 242 (SOD,CHB)(HYF) P42481042 SHF INTRSTATE D03 G06 ET LOEWEN MISS 33T 38W LOEWEN M326 SIR 33T (CHB)(DLF,IEF) P42968638 LOEWEN R125 MISS 55T ET
<b>BW</b> -0.9 <b>WW</b> 51 <b>YW</b> 81 <b>MM</b> 22 <b>M&amp;G</b> 48 <b>SC</b> 1.0 <b>FAT</b> 0.010 <b>REA</b> 0.38 <b>MARB</b> 0.25	
<b>CE Score</b> 1 <b>Act. BW</b> 70 <b>BW Ratio</b> 84 <b>Adj. WW</b> 708 <b>WW Ratio</b> 106 <b>Adj. YW</b> 1191 <b>YW Ratio</b> 103 <b>Frame Score</b> 6.3	
<b>Adj. BF Ratio</b> 0.22-97 <b>Adj. REA Ratio</b> 12.09-88 <b>REA/cwt</b> 1.11 <b>Adj. MARB Ratio</b> 3.7 <b>MARB Ratio</b> 100 <b>Adj. SC (CM)</b> 36.18 <b>Age of Dam</b> 2 <b>BWR</b> 1-84 <b>Dam's Production WWR</b> 1-106 <b>YWR</b> 1-103	



Lot 28 — SHF Lodestar P20 Y98

- Here is a Progress son that ranks in the top 3% or better in all four of the breed Indexes. Very balanced and impressive set of numbers.

<b>29</b>	<b>SHF LYLE P20 Y71</b> Calved: Feb. 10, 2011 43181168 H/P/S/D: H
Selling: Full possession and 3/4 semen interest.	
<b>BMI\$</b> <b>26</b> <b>CEZ\$</b> <b>21</b> <b>BIIS</b> <b>22</b> <b>CHB\$</b> <b>31</b>	SHF PROGRESS P20 (CHB)(DLF,HYF,IEF) FELTONS LEGEND 242 (SOD,CHB)(HYF) P42481042 SHF INTRSTATE D03 G06 ET SHF GERBER R117 W171 SHF RIB EYE M326 R117 (CHB)(DLF,HYF,IEF) P42991497 SHF LADY 512 L73 (DOD)
<b>BW</b> 0.8 <b>WW</b> 54 <b>YW</b> 84 <b>MM</b> 22 <b>M&amp;G</b> 49 <b>SC</b> 1.2 <b>FAT</b> -0.010 <b>REA</b> 0.32 <b>MARB</b> 0.25	
<b>CE Score</b> 1 <b>Act. BW</b> 80 <b>BW Ratio</b> 97 <b>Adj. WW</b> 700 <b>WW Ratio</b> 105 <b>Adj. YW</b> 1201 <b>YW Ratio</b> 104 <b>Frame Score</b> 6.3	
<b>Adj. BF Ratio</b> 0.26-114 <b>Adj. REA Ratio</b> 14.31-105 <b>REA/cwt</b> 1.3 <b>Adj. MARB Ratio</b> 3.63 <b>MARB Ratio</b> 98 <b>Adj. SC (CM)</b> 37.64 <b>Age of Dam</b> 1 <b>BWR</b> 1-97 <b>Dam's Production WWR</b> 1-105 <b>YWR</b> 1-104	

- Lyle is a Progress out of a Rib Eye daughter. This bull comes from the same cow family that produced SHF Radar. Should make some terrific uddered females. Dehorned.

Can't make the sale? Watch & bid online for FREE at [www.dvauction.com](http://www.dvauction.com) !

**DVAuction**  
Broadcasting Real-Time Auctions

Buying online is as easy as 1, 2, 3...

1. Create an account at [www.dvauction.com](http://www.dvauction.com) under the "register" tab
2. Apply for bidding approval by clicking on the "details" tab at least 24 hours prior to the auction-a DV representative will notify you once you have been approved
3. Tune in for the sale and make your purchases!

After the sale, contact the sale manager or owner to arrange transportation and payment. **High speed internet** is required for successful bidding-be sure to check the lag-time monitor in the top left corner to ensure real-time broadcasts.

**Proxy Bidding**-if you can't make time to watch the sale, register a proxy bid and let our system represent your bid while you're away. Look for the "proxy bid" tab on the auction listing, and fill in your maximum bids. We'll handle the rest!

**Having troubles?**

During the auction, you can type a message to the operator at any time for assistance. Our full-time support team can also always be reached at (402) 474-5557.

# SANDHILL FARMS BULLS



Lot 30 — SHF Luke P20 Y92

<b>30</b>	<b>SHF LUKE P20 Y92</b> Calved: Feb. 12, 2011 P43181183 H/P/S/D: P
Selling: Full possession and 3/4 semen interest.	
<b>BMIS</b> <b>23</b> <b>CEZ\$</b> <b>20</b> <b>BIIS</b> <b>19</b> <b>CHB\$</b> <b>29</b>	FELTONS LEGEND 242 {SOD,CHB}{HYF} SHF PROGRESS P20 {CHB}{DLF,HYF,IEF} P42481042 SHF INTRSTATE D03 G06 ET SHF LACY R117 W139 P42991468 SHF RIB EYE M326 R117 {CHB}{DLF,HYF,IEF} SHF QUEEN M33 P83
<b>BW</b> 0.5 <b>WW</b> 50 <b>YW</b> 81 <b>MM</b> 24 <b>M&amp;G</b> 49 <b>SC</b> 1.0 <b>FAT</b> 0.010 <b>REA</b> 0.24 <b>MARB</b> 0.30	
<b>CE Score</b> 1 <b>Act. BW</b> 81 <b>BW Ratio</b> 98 <b>Adj. WW</b> 728 <b>WW Ratio</b> 109 <b>Adj. YW</b> 1249 <b>YW Ratio</b> 108 <b>Frame Score</b> 6.8	
<b>Adj. BF Ratio</b> 0.37-163 <b>Adj. REA Ratio</b> 14.87-109 <b>REA/cwt</b> 1.3 <b>Adj. MARB Ratio</b> 4.45 <b>MARB Ratio</b> 120 <b>Adj. SC (CM)</b> 36.65 <b>Age of Dam</b> 2 <b>BWR</b> 1-98 <b>Dam's Production WWR</b> 1-109 <b>YWR</b> 1-108	

• In my opinion, this bull is what we are trying to produce: 0.5 BW, 81 YW EPDs and ratioed 120 on MARB and 109 on REA. I am glad that putting Progress and Rib Eye in the same pedigree works as we have a lot of them.

<b>31</b>	<b>SHF LOWELL P20 Y99</b> Calved: Feb. 14, 2011 P43181189 H/P/S/D: P
Selling: Full possession and 3/4 semen interest.	
<b>BMIS</b> <b>27</b> <b>CEZ\$</b> <b>20</b> <b>BIIS</b> <b>24</b> <b>CHB\$</b> <b>31</b>	FELTONS LEGEND 242 {SOD,CHB}{HYF} SHF PROGRESS P20 {CHB}{DLF,HYF,IEF} P42481042 SHF INTRSTATE D03 G06 ET SHF MAGGIE T57 W74 P42991566 SHF TUG R117 T57 {CHB} SHF INTERSTATE D03 G19
<b>BW</b> 2 <b>WW</b> 52 <b>YW</b> 83 <b>MM</b> 22 <b>M&amp;G</b> 48 <b>SC</b> 1.4 <b>FAT</b> 0.010 <b>REA</b> 0.30 <b>MARB</b> 0.34	
<b>CE Score</b> 1 <b>Act. BW</b> 85 <b>BW Ratio</b> 102 <b>Adj. WW</b> 676 <b>WW Ratio</b> 101 <b>Adj. YW</b> 1210 <b>YW Ratio</b> 105 <b>Frame Score</b> 6.8	
<b>Adj. BF Ratio</b> 0.19-84 <b>Adj. REA Ratio</b> 13.1-96 <b>REA/cwt</b> 1.18 <b>Adj. MARB Ratio</b> 4.12 <b>MARB Ratio</b> 111 <b>Adj. SC (CM)</b> 39.28 <b>Age of Dam</b> 2 <b>BWR</b> 1-102 <b>Dam's Production WWR</b> 1-101 <b>YWR</b> 1-105	

• Lowell ranks in the top 3% or better for all the breed indexes. Combine that with a top 1% for MARB EPD. And as important, he has muscle and style.



Travis and Brooke

<b>32</b>	<b>SHF LUXOR 502R Y64</b> Calved: Feb. 9, 2011 P43181163 H/P/S/D: P
Selling: Full possession and 3/4 semen interest.	
<b>BMIS</b> <b>27</b> <b>CEZ\$</b> <b>20</b> <b>BIIS</b> <b>22</b> <b>CHB\$</b> <b>38</b>	HUTH FULL HOUSE N003 {CHB} PCR 286 MR ADVISOR 502R {CHB}{DLF,HYF,IEF} P42620083 PCR JACKLYN NIKOLE 344N {DLF,IEF} SHF VICKIE R117 W08 ET P42991685 SHF RIB EYE M326 R117 {CHB}{DLF,HYF,IEF} SHF MISS PROGRESS S03 ET
<b>BW</b> 0.8 <b>WW</b> 54 <b>YW</b> 96 <b>MM</b> 23 <b>M&amp;G</b> 50 <b>SC</b> 1.1 <b>FAT</b> -0.020 <b>REA</b> 0.33 <b>MARB</b> 0.51	
<b>CE Score</b> 1 <b>Act. BW</b> 78 <b>BW Ratio</b> 94 <b>Adj. WW</b> 650 <b>WW Ratio</b> 97 <b>Adj. YW</b> 1259 <b>YW Ratio</b> 109 <b>Frame Score</b> 7.1	
<b>Adj. BF Ratio</b> 0.26-114 <b>Adj. REA Ratio</b> 13.16-96 <b>REA/cwt</b> 1.13 <b>Adj. MARB Ratio</b> 4.12 <b>MARB Ratio</b> 111 <b>Adj. SC (CM)</b> 35 <b>Age of Dam</b> 2 <b>BWR</b> 1-94 <b>Dam's Production WWR</b> 1-97 <b>YWR</b> 1-109	

• The dam of this bull is a full sister to our herd sire SHF Vision. His grandam, S03, was the top selling cow in our 2011 sale at \$15,000. This bull combines pedigree, data and EPDs.

<b>33</b>	<b>SHF LOGICAL 40W Y51 ET</b> Calved: Feb. 7, 2011 P43185438 H/P/S/D: P
Selling: Full possession and 3/4 semen interest.	
<b>BMIS</b> <b>19</b> <b>CEZ\$</b> <b>15</b> <b>BIIS</b> <b>17</b> <b>CHB\$</b> <b>26</b>	NJW 45P 139J FULL TANK 134S BAR-H IDEAL 40W {DLF,HYF,IEF} P43051117 KR1 SUSIE 4L SHF RADAR R125 T07 ET {DLF,IEF} P42795982 SHF GOVERNESS 236G L37
<b>BW</b> 2.2 <b>WW</b> 51 <b>YW</b> 83 <b>MM</b> 17 <b>M&amp;G</b> 42 <b>SC</b> 0.8 <b>FAT</b> -0.020 <b>REA</b> 0.59 <b>MARB</b> 0.05	
<b>CE Score</b> 1 <b>Act. BW</b> 92 <b>BW Ratio</b> ET <b>Adj. WW</b> 622 <b>WW Ratio</b> ET <b>Adj. YW</b> 1072 <b>YW Ratio</b> ET <b>Frame Score</b> 6.3	
<b>Adj. BF Ratio</b> 0.19-74 <b>Adj. REA Ratio</b> 13.79-101 <b>REA/cwt</b> 1.31 <b>Adj. MARB Ratio</b> 3.75 <b>MARB Ratio</b> 106 <b>Adj. SC (CM)</b> 35.19 <b>Age of Dam</b> 4 <b>BWR</b> 3-86 <b>Dam's Production WWR</b> 3-103 <b>YWR</b> 3-100	

• Here is an ET son of T07 and sired by Ideal 40W. T07 comes from the same cow family that produced SHF Wonder.

# SANDHILL FARMS BULLS

<b>34</b>	<b>SHF YARDMASTER 40W Y38</b>	Calved: Feb. 4, 2011	P43185355	H/P/S/D: P				
Selling: Full possession and 3/4 semen interest.								
<b>BMI\$</b> <b>20</b> <b>CEZ\$</b> <b>17</b> <b>BIIS</b> <b>16</b> <b>CHB\$</b> <b>24</b>	BAR-H IDEAL 40W (DLF,HYF,IEF) P43051117	NJW 45P 139J FULL TANK 134S KR1 SUSIE 4L	SHF RIB EYE M326 R117 (CHB){DLF,HYF,IEF}					
	SHF LACY R117 W136 P42991465	SHF QUEEN M33 S75						
<b>BW</b> 1.1	<b>WW</b> 50	<b>YW</b> 83	<b>MM</b> 20	<b>M&amp;G</b> 45	<b>SC</b> 0.9	<b>FAT</b> 0.010	<b>REA</b> 0.47	<b>MARB</b> 0.07
<b>CE Score</b> 1	<b>Act. BW</b> 75	<b>BW Ratio</b> 91	<b>Adj. WW</b> 692	<b>WW Ratio</b> 103	<b>Adj. YW</b> 1199	<b>YW Ratio</b> 104	<b>Frame Score</b> 6.4	
<b>Adj. BF Ratio</b>	<b>Adj. REA Ratio</b>	<b>REA/cwt</b>	<b>Adj. MARB Ratio</b>	<b>MARB Ratio</b>	<b>Adj. SC (CM)</b>	<b>Age of Dam</b>	<b>Dam's Production WWR</b>	<b>YWR</b>
0.25-110	15.33-112	1.38	3.45	93	35.91	1	1-91	1-103

• Here is a son of Ideal 40W out of a first calf heifer. Low BW and better than average growth, then he measured a 15.33 sq. in. ribeye.

<b>35</b>	<b>SHF LARNED P20 Y25</b>	Calved: Jan. 28, 2011	P43181136	H/P/S/D: P				
Selling: Full possession and 3/4 semen interest.								
<b>BMI\$</b> <b>22</b> <b>CEZ\$</b> <b>22</b> <b>BIIS</b> <b>18</b> <b>CHB\$</b> <b>28</b>	PCR 286 MR ADVISOR 502R (CHB){DLF,HYF,IEF} P42620083	HUTH FULL HOUSE N003 (CHB) PCR JACKLYN NIKOLE 344N (DLF,IEF)	SHF PROGRESS P20 (CHB){DLF,HYF,IEF}					
	SHF LACY P20 W125 P42991453	SHF MISS M326 T53 ET						
<b>BW</b> -1.7	<b>WW</b> 45	<b>YW</b> 70	<b>MM</b> 24	<b>M&amp;G</b> 47	<b>SC</b> 0.8	<b>FAT</b> 0.010	<b>REA</b> 0.14	<b>MARB</b> 0.32
<b>CE Score</b> 1	<b>Act. BW</b> 74	<b>BW Ratio</b> 89	<b>Adj. WW</b> 682	<b>WW Ratio</b> 102	<b>Adj. YW</b> 1145	<b>YW Ratio</b> 99	<b>Frame Score</b> 5.9	
<b>Adj. BF Ratio</b>	<b>Adj. REA Ratio</b>	<b>REA/cwt</b>	<b>Adj. MARB Ratio</b>	<b>MARB Ratio</b>	<b>Adj. SC (CM)</b>	<b>Age of Dam</b>	<b>Dam's Production WWR</b>	<b>YWR</b>
0.21-92	13.25-97	1.24	3.71	100	34.69	1	1-89	1-102

• Larned is a top bred son of Advisor and out of a nice Progress daughter. He ranks in the top 1% of the breed for all the calving ease indicators. Really good 2-year-old dam.

<b>36</b>	<b>SHF LANDSCAPE 40W Y236</b>	Calved: March 26, 2011	P43181124	H/P/S/D: P				
Selling: Full possession and 3/4 semen interest.								
<b>BMI\$</b> <b>16</b> <b>CEZ\$</b> <b>13</b> <b>BIIS</b> <b>14</b> <b>CHB\$</b> <b>25</b>	BAR-H IDEAL 40W (DLF,HYF,IEF) P43051117	NJW 45P 139J FULL TANK 134S KR1 SUSIE 4L	KCF BENNETT P606 S79					
	SHF BOOMER 79 U131 P42924658	SHF QUEEN M33 R47						
<b>BW</b> 4.1	<b>WW</b> 56	<b>YW</b> 95	<b>MM</b> 22	<b>M&amp;G</b> 50	<b>SC</b> 0.9	<b>FAT</b> 0.010	<b>REA</b> 0.54	<b>MARB</b> 0.00
<b>CE Score</b> 1	<b>Act. BW</b> 88	<b>BW Ratio</b> 101	<b>Adj. WW</b> 697	<b>WW Ratio</b> 111	<b>Adj. YW</b> 1171	<b>YW Ratio</b> 105	<b>Frame Score</b> 6.2	
<b>Adj. BF Ratio</b>	<b>Adj. REA Ratio</b>	<b>REA/cwt</b>	<b>Adj. MARB Ratio</b>	<b>MARB Ratio</b>	<b>Adj. SC (CM)</b>	<b>Age of Dam</b>	<b>Dam's Production WWR</b>	<b>YWR</b>
0.21-92	12.56-92	1.21	2.77	75	34.95	3	2-96	1-111

• Here is a bigger growth son of 40W. Should sire some top performing cattle.

<b>37</b>	<b>SHF LANDING 28W Y23</b>	Calved: Jan. 28, 2011	P43181117	H/P/S/D: P				
Selling: Full possession and 3/4 semen interest.								
<b>BMI\$</b> <b>24</b> <b>CEZ\$</b> <b>18</b> <b>BIIS</b> <b>20</b> <b>CHB\$</b> <b>31</b>	LOEWEN HUDSON 28W P42968634	MSU MF HUDSON 19H (SOD,CHB){HYF} SHF MISS H142 P35 (DLF,HYF,IEF)	KCF BENNETT 3008 M326 (CHB){DLF,HYF,IEF}					
	HVH MISS M326 36R P42576684	HVH MISS BOOMER 54E 95M ET						
<b>BW</b> 3.6	<b>WW</b> 59	<b>YW</b> 91	<b>MM</b> 20	<b>M&amp;G</b> 50	<b>SC</b> 1.2	<b>FAT</b> -0.020	<b>REA</b> 0.52	<b>MARB</b> 0.11
<b>CE Score</b> 1	<b>Act. BW</b> 72	<b>BW Ratio</b> 100	<b>Adj. WW</b> 704	<b>WW Ratio</b> 100	<b>Adj. YW</b> 1139	<b>YW Ratio</b> 100	<b>Frame Score</b> 6.6	
<b>Adj. BF Ratio</b>	<b>Adj. REA Ratio</b>	<b>REA/cwt</b>	<b>Adj. MARB Ratio</b>	<b>MARB Ratio</b>	<b>Adj. SC (CM)</b>	<b>Age of Dam</b>	<b>Dam's Production WWR</b>	<b>YWR</b>
0.16-100	13.84-100	1.21	3.89	100	34.89	5	3-105	4-102

• Landing is a twin. Birth weight on this bull's calves will be fine, but the actual BW of 72 lb. will not be an indicator. His dam, 36R, is one of the best cows we bought from Loewen Herefords. Dehorned.

<b>38</b>	<b>SHF LEFT 28W Y107</b>	Calved: Feb. 14, 2011	P43185363	H/P/S/D: P				
Selling: Full possession and 3/4 semen interest.								
<b>BMI\$</b> <b>25</b> <b>CEZ\$</b> <b>20</b> <b>BIIS</b> <b>21</b> <b>CHB\$</b> <b>27</b>	LOEWEN HUDSON 28W P42968634	MSU MF HUDSON 19H (SOD,CHB){HYF} SHF MISS H142 P35 (DLF,HYF,IEF)	KCF BENNETT 3008 M326 (CHB){DLF,HYF,IEF}					
	LOEWEN MISS M326 61U P42968665	HVH TRUDY 81G 71N						
<b>BW</b> 0.2	<b>WW</b> 52	<b>YW</b> 78	<b>MM</b> 19	<b>M&amp;G</b> 45	<b>SC</b> 1.1	<b>FAT</b> -0.010	<b>REA</b> 0.45	<b>MARB</b> 0.12
<b>CE Score</b> 1	<b>Act. BW</b> 70	<b>BW Ratio</b> 83	<b>Adj. WW</b> 689	<b>WW Ratio</b> 103	<b>Adj. YW</b> 1190	<b>YW Ratio</b> 103	<b>Frame Score</b> 6.4	
<b>Adj. BF Ratio</b>	<b>Adj. REA Ratio</b>	<b>REA/cwt</b>	<b>Adj. MARB Ratio</b>	<b>MARB Ratio</b>	<b>Adj. SC (CM)</b>	<b>Age of Dam</b>	<b>Dam's Production WWR</b>	<b>YWR</b>
0.19-94	13.57-99	1.24	3.32	90	36.11	2	1-83	1-103

• This bull started out with a BW ratio of 83, then grew well enough to ratio 103 at WW and YW. His nice EPD profile reflects this.

## SANDHILL FARMS

Because of data collected on each animal in a pedigree, EPDs and \$ indexes are superior in predicting an animal's genetic ability compared to an animal's actual measurements.

We have collected whole herd performance data since our beginning with registered cattle in 1979 and ultrasound data on all our cattle since 1994.

# SANDHILL FARMS BULLS



Lot 39 — SHF Yule P20 Y03

<b>39</b>		<b>SHF YULE P20 Y03</b>		Calved: Jan. 7, 2011	P43180995	H/P/S/D: P		
Selling: Full possession and 3/4 semen interest.								
<b>BMI\$</b> 20 <b>CEZ\$</b> 22 <b>BIIS</b> 16 <b>CHBS\$</b> 27	SHF PROGRESS P20 {CHB}{DLF,HYF,IEF} P42481042			FELTONS LEGEND 242 {SOD,CHB}{HYF}				
	LOEWEN MISS 33T R32 50W P42981998			SHF INTRSTATE D03 G06 ET				
				LOEWEN M326 SIR 33T {CHB}{DLF,IEF}				
				SPEARHEAD LAVERNA R32				
<b>BW</b> -2	<b>WW</b> 45	<b>YW</b> 71	<b>MM</b> 21	<b>M&amp;G</b> 43	<b>SC</b> 0.5	<b>FAT</b> 0.020	<b>REA</b> 0.25	<b>MARB</b> 0.30
<b>CE Score</b> 1	<b>Act. BW</b> 67	<b>BW Ratio</b> 82	<b>Adj. WW</b> 642	<b>WW Ratio</b> 96	<b>Adj. YW</b> 1125	<b>YW Ratio</b> 97	<b>Frame Score</b> 6.4	
<b>Adj. BF Ratio</b>	<b>Adj. REA Ratio</b>	<b>REA/cwt</b>	<b>Adj. MARB</b>	<b>MARB Ratio</b>	<b>Adj. SC (CM)</b>	<b>Age of Dam</b>	<b>BWR</b>	<b>Dam's Production WWR</b> YWR
0.19-84	12.85-94	1.2	3.48	94	32.15	2	1-82	1-96 1-97

- Take note of the facts on this bull. A 67 lb. actual BW and all three calving ease indicators rank him in the top 1% of the breed for this important trait.



Lot 40 — SHF Len 502R Y173

<b>40</b>		<b>SHF LEN 502R Y173</b>		Calved: Feb. 28, 2011	P43181059	H/P/S/D: P		
Selling: Full possession and 3/4 semen interest.								
<b>BMI\$</b> 33 <b>CEZ\$</b> 21 <b>BIIS</b> 29 <b>CHBS\$</b> 42	PCR 286 MR ADVISOR 502R {CHB}{DLF,HYF,IEF} P42620083			HUTH FULL HOUSE N003 {CHB}				
	SHF PROGRESS P20 U06 ET {DLF,HYF,IEF} P42894338			PCR JACKLYN NIKOLE 344N {DLF,IEF}				
				SHF PROGRESS P20 {CHB}{DLF,HYF,IEF}				
				SHF MISS 105A M01				
<b>BW</b> 2	<b>WW</b> 64	<b>YW</b> 113	<b>MM</b> 22	<b>M&amp;G</b> 54	<b>SC</b> 1.9	<b>FAT</b> 0.010	<b>REA</b> 0.40	<b>MARB</b> 0.53
<b>CE Score</b> 1	<b>Act. BW</b> 91	<b>BW Ratio</b> 103	<b>Adj. WW</b> 759	<b>WW Ratio</b> 114	<b>Adj. YW</b> 1384	<b>YW Ratio</b> 120	<b>Frame Score</b> 6.4	
<b>Adj. BF Ratio</b>	<b>Adj. REA Ratio</b>	<b>REA/cwt</b>	<b>Adj. MARB</b>	<b>MARB Ratio</b>	<b>Adj. SC (CM)</b>	<b>Age of Dam</b>	<b>BWR</b>	<b>Dam's Production WWR</b> YWR
0.27-119	13.05-95	1.01	4.85	131	42.5	3	2-98	2-107 2-110

- Len is a natural son of donor U06. Ranks in the top 1% of the breed for all four indexes, WW, YW, SC and MARB. We have flushed U06 and her full sister U16.



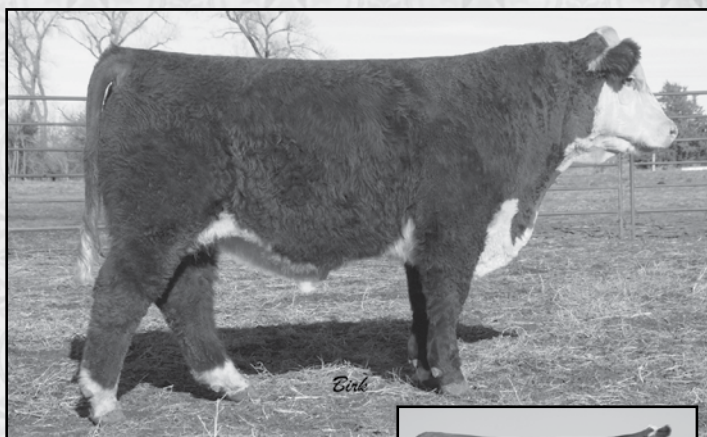
KLA Tour

<b>41</b>		<b>SHF LEADER 33T Y10</b>		Calved: Jan. 15, 2011	P43180998	H/P/S/D: P		
Selling: Full possession and 3/4 semen interest.								
<b>BMI\$</b> 18 <b>CEZ\$</b> 14 <b>BIIS</b> 16 <b>CHBS\$</b> 25	LOEWEN M326 SIR 33T {CHB}{DLF,IEF} P42778601			KCF BENNETT 3008 M326 {CHB}{DLF,HYF,IEF}				
	CS VICKY BOOMER P606 R320 {DLF,IEF} P42606852			HVH OKSANA 4L 33N {DLF,HYF,IEF}				
				PW VICTOR BOOMER P606 {SOD}{DLF,HYF,IEF}				
				WPHF PRM RENEE 9329 180				
<b>BW</b> 3.7	<b>WW</b> 55	<b>YW</b> 76	<b>MM</b> 23	<b>M&amp;G</b> 50	<b>SC</b> 0.8	<b>FAT</b> 0.020	<b>REA</b> 0.66	<b>MARB</b> 0.09
<b>CE Score</b> 1	<b>Act. BW</b> 98	<b>BW Ratio</b> 107	<b>Adj. WW</b> 713	<b>WW Ratio</b> 107	<b>Adj. YW</b> 1123	<b>YW Ratio</b> 97	<b>Frame Score</b> 7.4	
<b>Adj. BF Ratio</b>	<b>Adj. REA Ratio</b>	<b>REA/cwt</b>	<b>Adj. MARB</b>	<b>MARB Ratio</b>	<b>Adj. SC (CM)</b>	<b>Age of Dam</b>	<b>BWR</b>	<b>Dam's Production WWR</b> YWR
0.22-97	13.84-101	1.2	3.49	94	35.53	5	4-99	3-103 2-99

- Leader is a larger framed, top performance bull. Sired by 33T and out of a very good uddered P606 daughter.

# SANDHILL FARMS BULLS

<b>42</b>	<b>SHF LARSON 502R Y165</b> Calved: Feb. 26, 2011 P43181051 H/P/S/D: P							
Selling: Full possession and 3/4 semen interest.								
<b>BMI\$</b> <b>29</b> <b>CEZ\$</b> <b>17</b> <b>BIIS</b> <b>26</b> <b>CHB\$</b> <b>35</b>	HUTH FULL HOUSE N003 {CHB} PCR 286 MR ADVISOR 502R {CHB}{DLF,HYF,IEF} P42620083 PCR JACKLYN NIKOLE 344N {DLF,IEF} SHF MARSHAL 236G M33 {SOD,CHB} SHF QUEEN M33 T120 P42795883 SHF MISS 105A M06 ET							
<b>BW</b> 4.7	<b>WW</b> 61	<b>YW</b> 102	<b>MM</b> 20	<b>M&amp;G</b> 50	<b>SC</b> 1.7	<b>FAT</b> -0.020	<b>REA</b> 0.34	<b>MARB</b> 0.27
<b>CE Score</b> 1	<b>Act. BW</b> 99	<b>BW Ratio</b> 110	<b>Adj. WW</b> 718	<b>WW Ratio</b> 107	<b>Adj. YW</b> 1253	<b>YW Ratio</b> 108	<b>Frame Score</b> 6.7	
<b>Adj. BF Ratio</b>	<b>Adj. REA Ratio</b>	<b>REA/cwt</b>	<b>Adj. MARB Ratio</b>	<b>MARB Ratio</b>	<b>Adj. SC (CM)</b>	<b>Age of Dam</b>	<b>BWR</b>	<b>Dam's Production WWR</b>
0.32-141	14.51-106	1.23	4.14	112	40.64	4	3-101	3-102



Lot 42 —  
SHF Larson 502R Y165

SHF Queen M33 T120 — Dam of Lot 42



- Larson is a big time performance bull. A 1,253 adj. YW, over 4% MARB and a 14.5 sq. in. REA. Top 1% of the breed in three of the four breed Indexes. Cow family goes back to dam of Progress and Phoenix.

<b>43</b>	<b>SHF LAWTON R117 Y171</b> Calved: Feb. 28, 2011 P43181057 H/P/S/D: P							
Selling: Full possession and 3/4 semen interest.								
<b>BMI\$</b> <b>27</b> <b>CEZ\$</b> <b>16</b> <b>BIIS</b> <b>25</b> <b>CHB\$</b> <b>28</b>	KCF BENNETT 3008 M326 {CHB}{DLF,HYF,IEF} SHF RIB EYE M326 R117 {CHB}{DLF,HYF,IEF} P42584003 HVH MISS HUDSON 83K 8M SHF MARSHAL 236G M33 {SOD,CHB} SHF QUEEN M33 P41 {DOD} P42481114 SHF STOCK LADY 417 G14							
<b>BW</b> 5.7	<b>WW</b> 56	<b>YW</b> 93	<b>MM</b> 22	<b>M&amp;G</b> 50	<b>SC</b> 1.8	<b>FAT</b> -0.020	<b>REA</b> 0.26	<b>MARB</b> 0.12
<b>CE Score</b> 1	<b>Act. BW</b> 105	<b>BW Ratio</b> 114	<b>Adj. WW</b> 716	<b>WW Ratio</b> 107	<b>Adj. YW</b> 1273	<b>YW Ratio</b> 110	<b>Frame Score</b> 6.0	
<b>Adj. BF Ratio</b>	<b>Adj. REA Ratio</b>	<b>REA/cwt</b>	<b>Adj. MARB Ratio</b>	<b>MARB Ratio</b>	<b>Adj. SC (CM)</b>	<b>Age of Dam</b>	<b>BWR</b>	<b>Dam's Production WWR</b>
0.41-180	14.5-106	1.19	4.65	125	41.82	7	6-106	6-112



Lot 43 — SHF Lawton R117 Y171

- Lawton is a top bull for you to consider if you need a performance bull to use on cows. We have two full sisters in production and BW has not been an issue. Top performance and carcass traits.

<b>44</b>	<b>SHF LOWELL 43W Y20</b> Calved: Jan. 26, 2011 P43181085 H/P/S/D: P							
Selling: Full possession and 3/4 semen interest.								
<b>BMI\$</b> <b>14</b> <b>CEZ\$</b> <b>15</b> <b>BIIS</b> <b>10</b> <b>CHB\$</b> <b>25</b>	LOEWEN M326 SIR 33T {CHB}{DLF,IEF} LOEWEN 33T 5S 43W P42981997 HVH QUEEN P35 5S {DOD}{DLF,HYF,IEF} SHF PROGRESS P20 {CHB}{DLF,HYF,IEF} HVH QUEEN 20K 33S P42691473 SUN MS VICKY 20K {DLF,HYF,IEF}							
<b>BW</b> 2.7	<b>WW</b> 52	<b>YW</b> 91	<b>MM</b> 23	<b>M&amp;G</b> 49	<b>SC</b> 0.5	<b>FAT</b> 0.020	<b>REA</b> 0.41	<b>MARB</b> 0.07
<b>CE Score</b> 1	<b>Act. BW</b> 99	<b>BW Ratio</b> 109	<b>Adj. WW</b> 660	<b>WW Ratio</b> 99	<b>Adj. YW</b> 1183	<b>YW Ratio</b> 102	<b>Frame Score</b> 6.5	
<b>Adj. BF Ratio</b>	<b>Adj. REA Ratio</b>	<b>REA/cwt</b>	<b>Adj. MARB Ratio</b>	<b>MARB Ratio</b>	<b>Adj. SC (CM)</b>	<b>Age of Dam</b>	<b>BWR</b>	<b>Dam's Production WWR</b>
0.3-132	15.07-110	1.27	3.49	94	32.96	5	4-109	4-105



Moving cattle at Brookes

- Lowell is a big performance bull with a dam that is super sweet. She is long sided, deep ribbed and beautiful uddered. Take note of the big 15 sq. in. REA.

# SANDHILL FARMS BULLS



**HVH Oksana 4L 33N — Grandam of Lot 45**

<b>045</b>	<b>SHF LEGISLATOR 28W Y11</b>		
	Calved: Jan. 15, 2011	P43185362	H/P/S/D: P
Selling: Full possession and 3/4 semen interest.			
<b>BMI\$</b> <b>24</b>	LOEWEN HUDSON 28W P42968634	MSU MF HUDSON 19H (SOD,CHB){HYF}	
<b>CEZ\$</b> <b>20</b>		SHF MISS H142 P35 (DLF,HYF,IEF)	
<b>BIIS</b> <b>20</b>	HVH QUEEN 33N 21S (DOD) P42661344	SHF PROGRESS P20 (CHB){DLF,HYF,IEF}	
<b>CHBS</b> <b>31</b>		HVH OKSANA 4L 33N (DLF,HYF,IEF)	
<b>BW</b> <b>1.1</b>	<b>WW</b> <b>59</b>	<b>YW</b> <b>85</b>	<b>MM</b> <b>21</b>
<b>M&amp;G</b> <b>51</b>	<b>SC</b> <b>1.1</b>	<b>FAT</b> <b>0.010</b>	<b>REA</b> <b>0.41</b>
<b>MARB</b> <b>0.19</b>			
<b>CE Score</b> <b>1</b>	<b>Act. BW</b> <b>93</b>	<b>BW Ratio</b> <b>102</b>	<b>Adj. WW</b> <b>714</b>
<b>WW Ratio</b> <b>107</b>	<b>Adj. YW</b> <b>1193</b>	<b>YW Ratio</b> <b>103</b>	<b>Frame Score</b> <b>6.0</b>
<b>Adj. BF Ratio</b>	<b>Adj. REA Ratio</b>	<b>REA/cwt</b>	<b>Adj. MARB</b>
<b>MARB Ratio</b>	<b>Adj. SC (CM)</b>	<b>Age of Dam</b>	<b>Dam's Production WWR</b>
<b>YWR</b>	<b>BWR</b>	<b>WWR</b>	<b>YWR</b>
0.19-84	14.03-103	1.15	3.46
93	37.62	4	4-90
4-107	2-102		

• The dam of this bull, 21S, is a maternal sister to the popular sire Redeem. This bull has deep genetics of great udders and performance. Nice spread from birth to yearling EPD.



**2012 Denver Stock Show**

<b>046</b>	<b>SHF LESTER Y12</b>		
	Calved: Jan. 17, 2011	P43181015	H/P/S/D: P
Selling: Full possession and 3/4 semen interest.			
<b>BMI\$</b> <b>23</b>	MSU MF HUDSON 19H (SOD,CHB){HYF} P41027599	MSU WNH FELTON 5F (CHB)	
<b>CEZ\$</b> <b>21</b>		MSU VICTORIA 9F	
<b>BIIS</b> <b>17</b>	LOEWEN 2013 MISS 12W P42968631	R PUCKSTER 2013 (CHB){DLF,HYF,IEF}	
<b>CHBS</b> <b>32</b>		HVH CARLA 35J S31 ET	
<b>BW</b> <b>0.3</b>	<b>WW</b> <b>56</b>	<b>YW</b> <b>93</b>	<b>MM</b> <b>18</b>
<b>M&amp;G</b> <b>46</b>	<b>SC</b> <b>0.3</b>	<b>FAT</b> <b>-0.030</b>	<b>REA</b> <b>0.41</b>
<b>MARB</b> <b>0.14</b>			
<b>CE Score</b> <b>1</b>	<b>Act. BW</b> <b>82</b>	<b>BW Ratio</b> <b>99</b>	<b>Adj. WW</b> <b>734</b>
<b>WW Ratio</b> <b>110</b>	<b>Adj. YW</b> <b>1219</b>	<b>YW Ratio</b> <b>105</b>	<b>Frame Score</b> <b>6.5</b>
<b>Adj. BF Ratio</b>	<b>Adj. REA Ratio</b>	<b>REA/cwt</b>	<b>Adj. MARB</b>
<b>MARB Ratio</b>	<b>Adj. SC (CM)</b>	<b>Age of Dam</b>	<b>Dam's Production WWR</b>
<b>YWR</b>	<b>BWR</b>	<b>WWR</b>	<b>YWR</b>
0.26-114	13.73-100	1.18	3.32
90	34.37	2	1-99
1-110	1-105		

• Here is a Hudson son, same sire as Lot 1, out of a first calf heifer sired by Puckster. It is exciting for me when an average REA is 13.7 sq. in. We are making genetic improvement. This bull can help you make improvement also.



**NJW 57G 12E Forever 67M — Dam of Lot 47**

<b>047</b>	<b>SHF LAMONT 502R Y151</b>		
	Calved: Feb. 22, 2011	P43181039	H/P/S/D: P
Selling: Full possession and 3/4 semen interest.			
<b>BMI\$</b> <b>27</b>	PCR 286 MR ADVISOR 502R (CHB){DLF,HYF,IEF} P42620083	HUTH FULL HOUSE N003 (CHB)	
<b>CEZ\$</b> <b>19</b>		PCR JACKLYN NIKOLE 344N (DLF,IEF)	
<b>BIIS</b> <b>22</b>	NJW 57G 12E FOREVER 67M P42298549	RU 20X BOULDER 57G (CHB)	
<b>CHBS</b> <b>36</b>		NJW 25C 1A VACA 12E (DLF,HYF,IEF)	
<b>BW</b> <b>2.6</b>	<b>WW</b> <b>60</b>	<b>YW</b> <b>103</b>	<b>MM</b> <b>19</b>
<b>M&amp;G</b> <b>48</b>	<b>SC</b> <b>1.3</b>	<b>FAT</b> <b>-0.030</b>	<b>REA</b> <b>0.50</b>
<b>MARB</b> <b>0.21</b>			
<b>CE Score</b> <b>1</b>	<b>Act. BW</b> <b>92</b>	<b>BW Ratio</b> <b>100</b>	<b>Adj. WW</b> <b>694</b>
<b>WW Ratio</b> <b>104</b>	<b>Adj. YW</b> <b>1228</b>	<b>YW Ratio</b> <b>106</b>	<b>Frame Score</b> <b>6.2</b>
<b>Adj. BF Ratio</b>	<b>Adj. REA Ratio</b>	<b>REA/cwt</b>	<b>Adj. MARB</b>
<b>MARB Ratio</b>	<b>Adj. SC (CM)</b>	<b>Age of Dam</b>	<b>Dam's Production WWR</b>
<b>YWR</b>	<b>BWR</b>	<b>WWR</b>	<b>YWR</b>
0.17-75	15.38-113	1.31	3.18
86	37.6	9	8-98
8-100	7-103		

• This Advisor son is out of the 67M cow that came from Ned and Jan Ward in Wyoming. Lamont will add growth and REA to your program.

# SANDHILL FARMS BULLS

<b>48</b>	<b>SHF LANCELOT 502R Y166</b>	Calved: Feb. 27, 2011	P43181052	H/P/S/D: P					
Selling: Full possession and 3/4 semen interest.									
<b>BMI\$</b> <b>24</b> <b>CEZ\$</b> <b>14</b> <b>BI\$</b> <b>21</b> <b>CHB\$</b> <b>38</b>	HUTH FULL HOUSE N003 {CHB} PCR 286 MR ADVISOR 502R {CHB}{DLF,HYF,IEF} P42620083 PCR JACKLYN NIKOLE 344N {DLF,IEF} SHF GOVERNESS 236G T99 P42795892 REMITALL GOVERNOR 236G {SOD,CHB} SHF STOCK J105 L65								
<b>BW</b> 6	<b>WW</b> 66	<b>YW</b> 95	<b>MM</b> 20	<b>M&amp;G</b> 53	<b>SC</b> 1.1	<b>FAT</b> -0.030	<b>REA</b> 0.43	<b>MARB</b> 0.32	
<b>CE Score</b> 1	<b>Act. BW</b> 103	<b>BW Ratio</b> 115	<b>Adj. WW</b> 709	<b>WW Ratio</b> 106	<b>Adj. YW</b> 1120	<b>YW Ratio</b> 97	<b>Frame Score</b> 5.5		
<b>Adj. BF Ratio</b>	<b>Adj. REA Ratio</b>	<b>REA/cwt</b>	<b>Adj. MARB</b>	<b>MARB Ratio</b>	<b>Adj. SC (CM)</b>	<b>Age of Dam</b>	<b>Dam's Production WWR</b>	<b>YWR</b>	
0.16-70	14.03-103	1.33	4.08	110	36.03	4	3-103	3-104	3-99

• This bull is a top MARB son of Advisor. His dam, T99, is a good uddered daughter of our herd sire Governor. A good bull to use on a set of cows.

<b>49</b>	<b>SHF LION HEART T57 Y85 ET</b>	Calved: Feb. 11, 2011	P43181177	H/P/S/D: P					
Selling: Full possession and 3/4 semen interest.									
<b>BMI\$</b> <b>26</b> <b>CEZ\$</b> <b>17</b> <b>BI\$</b> <b>24</b> <b>CHB\$</b> <b>30</b>	SHF RIB EYE M326 R117 {CHB}{DLF,HYF,IEF} SHF TUG R117 T57 {CHB} P42795820 SHF BOOMER P606 R80 SHF PROGRESS T101 {DLF,HYF,IEF} P42795835 SHF BOOMER P606 R17 ET {DLF,HYF,IEF}								
<b>BW</b> 2.4	<b>WW</b> 54	<b>YW</b> 77	<b>MM</b> 27	<b>M&amp;G</b> 54	<b>SC</b> 1.4	<b>FAT</b> 0.030	<b>REA</b> 0.35	<b>MARB</b> 0.39	
<b>CE Score</b> 1	<b>Act. BW</b> 105	<b>BW Ratio</b> ET	<b>Adj. WW</b> 642	<b>WW Ratio</b> ET	<b>Adj. YW</b> 1171	<b>YW Ratio</b> ET	<b>Frame Score</b> 5.5		
<b>Adj. BF Ratio</b>	<b>Adj. REA Ratio</b>	<b>REA/cwt</b>	<b>Adj. MARB</b>	<b>MARB Ratio</b>	<b>Adj. SC (CM)</b>	<b>Age of Dam</b>	<b>Dam's Production WWR</b>	<b>YWR</b>	
0.22-85	13.61-99	1.19	4.2	118	37.32	4	3-101	2-99	2-95

• If you want to add MARB to your cow herd, study your lesson here. Whenever we have Tug and Progress in the same package, we observe a spike in MARB without a sacrifice in REA. Another bull to use in a mature cow herd.

<b>50</b>	<b>SHF LEX 8160U Y13</b>	Calved: Jan. 17, 2011	43200332	H/P/S/D: H					
Selling: Full possession and 3/4 semen interest.									
<b>BMI\$</b> <b>23</b> <b>CEZ\$</b> <b>15</b> <b>BI\$</b> <b>21</b> <b>CHB\$</b> <b>27</b>	JDH 15 WRANGLER 25L {CHB}{DLF,HYF,IEF} THR THOR 8160U {DLF,HYF,IEF} P42921030 THR MISS THOR 8050 KCF BENNETT 3008 M326 {CHB}{DLF,HYF,IEF} HVH MISS M326 13R P42576696 HVH PEARL 71K 11N {DLF,HYF,IEF}								
<b>BW</b> 5.2	<b>WW</b> 53	<b>YW</b> 85	<b>MM</b> 19	<b>M&amp;G</b> 46	<b>SC</b> 1.3	<b>FAT</b> -0.02	<b>REA</b> 0.44	<b>MARB</b> 0.08	
<b>CE Score</b> 1	<b>Act. BW</b> 103	<b>BW Ratio</b> 112	<b>Adj. WW</b> 643.7	<b>WW Ratio</b> 96	<b>Adj. YW</b> 1104.69	<b>YW Ratio</b> 96	<b>Frame Score</b> 6.4		
<b>Adj. BF Ratio</b>	<b>Adj. REA Ratio</b>	<b>REA/cwt</b>	<b>Adj. MARB</b>	<b>MARB Ratio</b>	<b>Adj. SC (CM)</b>	<b>Age of Dam</b>	<b>Dam's Production WWR</b>	<b>YWR</b>	
0.2-88	13.65-100	1.21	3.91	106	36.56	6	5-97	5-98	4-96

• A big time performance bull here. He is sired by 8160U who is owned by Kaczmarek's in Missouri. His dam is an M326 daughter that will add performance.

<b>51</b>	<b>SHF LEROY 43W Y18</b>	Calved: Jan. 25, 2011	P43181066	H/P/S/D: P					
Selling: Full possession and 3/4 semen interest.									
<b>BMI\$</b> <b>24</b> <b>CEZ\$</b> <b>20</b> <b>BI\$</b> <b>20</b> <b>CHB\$</b> <b>26</b>	LOEWEN M326 SIR 33T {CHB}{DLF,IEF} LOEWEN 33T 5S 43W P42981997 HVH QUEEN P35 5S {DOD}{DLF,HYF,IEF} KCF BENNETT 3008 M326 {CHB}{DLF,HYF,IEF} LOEWEN MISS M326 25W P42968648 HVH QUEEN 1124 26S								
<b>BW</b> 0.9	<b>WW</b> 46	<b>YW</b> 72	<b>MM</b> 21	<b>M&amp;G</b> 44	<b>SC</b> 1.0	<b>FAT</b> 0.010	<b>REA</b> 0.31	<b>MARB</b> 0.26	
<b>CE Score</b> 1	<b>Act. BW</b> 72	<b>BW Ratio</b> 87	<b>Adj. WW</b> 637	<b>WW Ratio</b> 95	<b>Adj. YW</b> 1128	<b>YW Ratio</b> 98	<b>Frame Score</b> 6.1		
<b>Adj. BF Ratio</b>	<b>Adj. REA Ratio</b>	<b>REA/cwt</b>	<b>Adj. MARB</b>	<b>MARB Ratio</b>	<b>Adj. SC (CM)</b>	<b>Age of Dam</b>	<b>Dam's Production WWR</b>	<b>YWR</b>	
0.21-92	12.75-93	1.2	4.14	112	34.59	2	1-87	1-95	1-98

• Leroy is a double-bred M326 bull with an actual BW of 72 lb. Really impressive when you look at the 112 ratio on MARB.

<b>52</b>	<b>SHF LYNCH 40W Y66</b>	Calved: Feb. 9, 2011	P43181165	H/P/S/D: P					
Selling: Full possession and 3/4 semen interest.									
<b>BMI\$</b> <b>21</b> <b>CEZ\$</b> <b>13</b> <b>BI\$</b> <b>19</b> <b>CHB\$</b> <b>28</b>	NJW 45P 139J FULL TANK 134S BAR-H IDEAL 40W {DLF,HYF,IEF} P43051117 KR1 SUSIE 4L SHF RIB EYE M326 R117 {CHB}{DLF,HYF,IEF} SHF VICKIE R117 W134 P42991463 SHF BOOMER P606 R80								
<b>BW</b> 5.5	<b>WW</b> 61	<b>YW</b> 98	<b>MM</b> 23	<b>M&amp;G</b> 53	<b>SC</b> 1.4	<b>FAT</b> 0.010	<b>REA</b> 0.52	<b>MARB</b> 0.04	
<b>CE Score</b> 1	<b>Act. BW</b> 97	<b>BW Ratio</b> 117	<b>Adj. WW</b> 751	<b>WW Ratio</b> 112	<b>Adj. YW</b> 1279	<b>YW Ratio</b> 111	<b>Frame Score</b> 6.6		
<b>Adj. BF Ratio</b>	<b>Adj. REA Ratio</b>	<b>REA/cwt</b>	<b>Adj. MARB</b>	<b>MARB Ratio</b>	<b>Adj. SC (CM)</b>	<b>Age of Dam</b>	<b>Dam's Production WWR</b>	<b>YWR</b>	
0.26-114	14.42-105	1.23	3.2	86	39.65	2	1-117	1-112	1-111

• A heavy muscled son of Ideal 40W. He posted a 112 and 111 ratio at weaning and yearling respectfully. His dam, W134, is a full sister to our herd sire Tug.



Lot 52 — SHF Lynch 40W Y66

# SANDHILL FARMS BULLS



Lot 53 — SHF Lloyd 33T Y43

<b>53</b>		<b>SHF LLOYD 33T Y43</b>	
Calved: Feb. 6, 2011		P43189213	H/P/S/D: P
Selling: Full possession and 3/4 semen interest.			
<b>BMI\$</b> 26	LOEWEN M326 SIR 33T {CHB}{DLF,IEF} P42778601		KCF BENNETT 3008 M326 {CHB}{DLF,HYF,IEF}
<b>CEZ\$</b> 20	SHF PROGRESS P20 U35 P42894852		SHF PROGRESS P20 {CHB}{DLF,HYF,IEF}
<b>BIIS</b> 22			SHV OKSANA 4L 33N {DLF,HYF,IEF}
<b>CHBS</b> 30			SHF PATRIOT 13P S39
<b>BW</b> 0.5	<b>WW</b> 53	<b>YW</b> 86	<b>MM</b> 20
<b>M&amp;G</b> 47	<b>SC</b> 1.2	<b>FAT</b> 0.020	<b>REA</b> 0.46
<b>MARB</b> 0.26			
<b>CE Score</b> 1	<b>Act. BW</b> 80	<b>BW Ratio</b> 91	<b>Adj. WW</b> 677
<b>WW Ratio</b> 101	<b>Adj. YW</b> 1221	<b>YW Ratio</b> 106	<b>Frame Score</b> 5.6
<b>Adj. BF Ratio</b> 0.27-119	<b>Adj. REA Ratio</b> 14.06-103	<b>REA/cwt</b> 1.2	<b>Adj. MARB Ratio</b> 4.12
<b>MARB Ratio</b> 111	<b>Adj. SC (CM)</b> 37.69	<b>Age of Dam</b> 3	<b>Dam's Production</b> BWR 2-87 WWR 2-99 YWR 2-103

- Starting out with a 0.5 BW EPD, the dam of this bull is a super uddered daughter of Progress. Be sure and note above 1,200 lb. yearling wt. and good scan info.



Full sister to dam of Lot 54

<b>54</b>		<b>SHF LAUREL U38 Y42</b>	
Calved: Feb. 5, 2011		P43181149	H/P/S/D: P
Selling: Full possession and 3/4 semen interest.			
<b>BMI\$</b> 22	SHF VISION R117 U38 {CHB}{DLF,IEF} P42894861		SHF RIB EYE M326 R117 {CHB}{DLF,HYF,IEF}
<b>CEZ\$</b> 19	SHF INTERSTTE D03 N22 P42376982		SHF MISS PROGRESS S03 ET
<b>BIIS</b> 20			SHF INTERSTATE 20X D03 {SOD,CHB}
<b>CHBS</b> 27			SHF LADY 512 G07 ET
<b>BW</b> 1	<b>WW</b> 45	<b>YW</b> 72	<b>MM</b> 18
<b>M&amp;G</b> 41	<b>SC</b> 0.8	<b>FAT</b> 0.000	<b>REA</b> 0.35
<b>MARB</b> 0.29			
<b>CE Score</b> 1	<b>Act. BW</b> 86	<b>BW Ratio</b> 93	<b>Adj. WW</b> 552
<b>WW Ratio</b> 82	<b>Adj. YW</b> 1118	<b>YW Ratio</b> 97	<b>Frame Score</b> 6.1
<b>Adj. BF Ratio</b> 0.27-119	<b>Adj. REA Ratio</b> 13.36-98	<b>REA/cwt</b> 1.2	<b>Adj. MARB Ratio</b> 4.13
<b>MARB Ratio</b> 111	<b>Adj. SC (CM)</b> 34.04	<b>Age of Dam</b> 8	<b>Dam's Production</b> BWR 7-91 WWR 7-96 YWR 6-99

- This Vision son is out of a really strong cow family. The dam, N22, has a more famous full sister J119. This cow family is responsible for some nationally known AI sires. You should get some very nice females out of this bull.

<b>55</b>		<b>SHF LOIN P20 Y39</b>	
Calved: Feb. 4, 2011		P43181148	H/P/S/D: P
Selling: Full possession and 3/4 semen interest.			
<b>BMI\$</b> 24	SHF PROGRESS P20 {CHB}{DLF,HYF,IEF} P42481042		FELTONS LEGEND 242 {SOD,CHB}{HYF}
<b>CEZ\$</b> 23	SHF MAGGIE R117 W30 P42991532		SHF INTRSTATE D03 G06 ET
<b>BIIS</b> 19			SHF RIB EYE M326 R117 {CHB}{DLF,HYF,IEF}
<b>CHBS</b> 29			SHF MISS P52 T68
<b>BW</b> -2.3	<b>WW</b> 46	<b>YW</b> 67	<b>MM</b> 24
<b>M&amp;G</b> 47	<b>SC</b> 0.8	<b>FAT</b> 0.000	<b>REA</b> 0.25
<b>MARB</b> 0.34			
<b>CE Score</b> 1	<b>Act. BW</b> 64	<b>BW Ratio</b> 77	<b>Adj. WW</b> 669
<b>WW Ratio</b> 100	<b>Adj. YW</b> 1135	<b>YW Ratio</b> 98	<b>Frame Score</b> 6.1
<b>Adj. BF Ratio</b> 0.18-79	<b>Adj. REA Ratio</b> 13.87-101	<b>REA/cwt</b> 1.32	<b>Adj. MARB Ratio</b> 3.78
<b>MARB Ratio</b> 102	<b>Adj. SC (CM)</b> 33.84	<b>Age of Dam</b> 2	<b>Dam's Production</b> BWR 1-77 WWR 1-100 YWR 1-98

- Might just be the lowest BW and BW EPD in the sale. Add an adj. WW of near 670 lb. and this is a pretty good combination.

<b>56</b>		<b>SHF LIONEL W146 Y191</b>	
Calved: March 6, 2011		P43181076	H/P/S/D: P
Selling: Full possession and 3/4 semen interest.			
<b>BMI\$</b> 28	SHF WEIGHT R117 W146 P42991475		SHF RIB EYE M326 R117 {CHB}{DLF,HYF,IEF}
<b>CEZ\$</b> 19	SHF QUEEN M33 S62 P42693403		SHF QUEEN M33 S98
<b>BIIS</b> 27			SHF MARSHAL 236G M33 {SOD,CHB}
<b>CHBS</b> 27			SHF INTERSTATE D03 N74
<b>BW</b> 2.4	<b>WW</b> 50	<b>YW</b> 76	<b>MM</b> 18
<b>M&amp;G</b> 43	<b>SC</b> 1.6	<b>FAT</b> -0.020	<b>REA</b> 0.33
<b>MARB</b> 0.16			
<b>CE Score</b> 1	<b>Act. BW</b> 82	<b>BW Ratio</b> 91	<b>Adj. WW</b> 591
<b>WW Ratio</b> 94	<b>Adj. YW</b> 1045	<b>YW Ratio</b> 94	<b>Frame Score</b> 6.1
<b>Adj. BF Ratio</b> 0.23-101	<b>Adj. REA Ratio</b> 12.96-95	<b>REA/cwt</b> 1.32	<b>Adj. MARB Ratio</b> 4.29
<b>MARB Ratio</b> 116	<b>Adj. SC (CM)</b> 37.09	<b>Age of Dam</b> 5	<b>Dam's Production</b> BWR 4-99 WWR 4-92 YWR 4-96

- Lionel is a Rib Eye grandson out of a really good uddered Marshal daughter.



# SANDHILL FARMS BULLS

<b>57</b>	<b>SHF LIMITED R117 Y91 ET</b> Calved: Feb. 13, 2011 P4318555 H/P/S/D: P
Selling: Full possession and 3/4 semen interest.	
<b>BMI\$</b> <b>26</b> <b>CEZ\$</b> <b>20</b> <b>BIIS</b> <b>22</b> <b>CHB\$</b> <b>29</b>	KCF BENNETT 3008 M326 (CHB){DLF,HYF,IEF} SHF RIB EYE M326 R117 (CHB){DLF,HYF,IEF} P42584003 HVH MISS HUDSON 83K 8M GHC PREMIER 155K (DLF,HYF,IEF) GHC MISS NANCY 98P P42998234 MCCOY 32K SUSIE 11M
<b>BW</b> 2.2 <b>WW</b> 53 <b>YW</b> 89 <b>MM</b> 28 <b>M&amp;G</b> 54 <b>SC</b> 1.5 <b>FAT</b> 0.000 <b>REA</b> 0.21 <b>MARB</b> 0.23	
<b>CE Score</b> 1 <b>Act. BW</b> 104 <b>BW Ratio</b> 1.14 <b>Adj. WW</b> 640 <b>WW Ratio</b> 1.11 <b>Adj. YW</b> 1146 <b>YW Ratio</b> 1.11 <b>Frame Score</b> 6.2	
<b>Adj. BF Ratio</b> 0.28-108 <b>Adj. REA Ratio</b> 12.73-93 <b>REA/cwt</b> 1.14 <b>Adj. MARB Ratio</b> 3.95 <b>MARB Ratio</b> 111 <b>Adj. SC (CM)</b> 40.41 <b>Age of Dam</b> 7 <b>Dam's BWR</b> 0 <b>Dam's Production WWR</b> 0 <b>YWR</b> 0	

• Limited is a full brother to the Denver bull, Y52, that sells as Lot 4. Probably the only difference between these bulls is a different recipient raised them. Super strong genetics here.

<b>58</b>	<b>SHF LAYMAN 19H Y05</b> Calved: Jan. 11, 2011 P43180996 H/P/S/D: P
Selling: Full possession and 3/4 semen interest.	
<b>BMI\$</b> <b>26</b> <b>CEZ\$</b> <b>20</b> <b>BIIS</b> <b>23</b> <b>CHB\$</b> <b>28</b>	MSU MF HUDSON 19H (SOD,CHB){HYF} P41027599 MSU WNH FELTON 5F (CHB) MSU VICTORIA 9F LOEWEN MISS 33T R26 41W P42981992 LOEWEN M326 SIR 33T (CHB){DLF,IEF} HVH VICTORIA D3 R26 ET (DOD)
<b>BW</b> 0.3 <b>WW</b> 54 <b>YW</b> 70 <b>MM</b> 22 <b>M&amp;G</b> 48 <b>SC</b> 1.2 <b>FAT</b> 0.000 <b>REA</b> 0.46 <b>MARB</b> 0.17	
<b>CE Score</b> 1 <b>Act. BW</b> 75 <b>BW Ratio</b> 1.25 <b>Adj. WW</b> 673 <b>WW Ratio</b> 1.01 <b>Adj. YW</b> 1090 <b>YW Ratio</b> 1.01 <b>Frame Score</b> 6.0	
<b>Adj. BF Ratio</b> 0.15-66 <b>Adj. REA Ratio</b> 13.06-96 <b>REA/cwt</b> 1.25 <b>Adj. MARB Ratio</b> 3.55 <b>MARB Ratio</b> 96 <b>Adj. SC (CM)</b> 37.26 <b>Age of Dam</b> 1 <b>Dam's BWR</b> 1-91 <b>Dam's Production WWR</b> 1-101 <b>YWR</b> 1-94	

• Layman is a low BW son of Hudson. He is a long sided bull that will add performance.

<b>59</b>	<b>SHF LIMBER U38 Y86</b> Calved: Feb. 11, 2011 P43181178 H/P/S/D: P
Selling: Full possession and 3/4 semen interest.	
<b>BMI\$</b> <b>25</b> <b>CEZ\$</b> <b>19</b> <b>BIIS</b> <b>21</b> <b>CHB\$</b> <b>33</b>	SHF VISION R117 U38 (CHB){DLF,IEF} P42894861 SHF RIB EYE M326 R117 (CHB){DLF,HYF,IEF} SHF MISS PROGRESS S03 ET SHF PORTERHOUSE M33 P52 (CHB) SHF LADY P52 U49 P42894873 SHF MISS 105A M04
<b>BW</b> 2.3 <b>WW</b> 60 <b>YW</b> 87 <b>MM</b> 22 <b>M&amp;G</b> 52 <b>SC</b> 1.2 <b>FAT</b> -0.020 <b>REA</b> 0.55 <b>MARB</b> 0.18	
<b>CE Score</b> 1 <b>Act. BW</b> 86 <b>BW Ratio</b> 1.16 <b>Adj. WW</b> 719 <b>WW Ratio</b> 1.07 <b>Adj. YW</b> 1171 <b>YW Ratio</b> 1.01 <b>Frame Score</b> 7.2	
<b>Adj. BF Ratio</b> 0.19-94 <b>Adj. REA Ratio</b> 12.97-95 <b>REA/cwt</b> 1.16 <b>Adj. MARB Ratio</b> 3.31 <b>MARB Ratio</b> 89 <b>Adj. SC (CM)</b> 35.8 <b>Age of Dam</b> 3 <b>Dam's BWR</b> 2-100 <b>Dam's Production WWR</b> 2-102 <b>YWR</b> 2-98	

• Another Vision son. These Vision daughters are looking to be super young cows. The grandam, M04, was a donor for us several times. This bull ranks in the top 3% of the breed for WW.



Lot 59 — SHF Limber U38 Y86

<b>60</b>	<b>SHF LIFE LINE U38 Y136</b> Calved: Feb. 20, 2011 P43181027 H/P/S/D: P
Selling: Full possession and 3/4 semen interest.	
<b>BMI\$</b> <b>25</b> <b>CEZ\$</b> <b>18</b> <b>BIIS</b> <b>22</b> <b>CHB\$</b> <b>31</b>	SHF VISION R117 U38 (CHB){DLF,IEF} P42894861 SHF RIB EYE M326 R117 (CHB){DLF,HYF,IEF} SHF MISS PROGRESS S03 ET SHF PHOENIX P68 U24 ET P42909929 SHF PHOENIX M33 P68 (CHB) SHF INTERSTATE D03 N29 (DOD){DLF,IEF}
<b>BW</b> 3 <b>WW</b> 56 <b>YW</b> 85 <b>MM</b> 21 <b>M&amp;G</b> 49 <b>SC</b> 1.2 <b>FAT</b> -0.010 <b>REA</b> 0.35 <b>MARB</b> 0.26	
<b>CE Score</b> 1 <b>Act. BW</b> 92 <b>BW Ratio</b> 1.31 <b>Adj. WW</b> 653 <b>WW Ratio</b> 0.98 <b>Adj. YW</b> 1174 <b>YW Ratio</b> 1.02 <b>Frame Score</b> 7.0	
<b>Adj. BF Ratio</b> 0.17-75 <b>Adj. REA Ratio</b> 14.46-106 <b>REA/cwt</b> 1.31 <b>Adj. MARB Ratio</b> 3.59 <b>MARB Ratio</b> 97 <b>Adj. SC (CM)</b> 36.05 <b>Age of Dam</b> 3 <b>Dam's BWR</b> 2-96 <b>Dam's Production WWR</b> 1-98 <b>YWR</b> 1-102	

• This Vision son is out of a super good daughter of Phoenix. We used a full brother to this bull's dam and I wish we had him back as the daughters are looking good.

<b>61</b>	<b>SHF LANNY P20 Y164</b> Calved: Feb. 27, 2011 P43181050 H/P/S/D: P
Selling: Full possession and 3/4 semen interest.	
<b>BMI\$</b> <b>18</b> <b>CEZ\$</b> <b>17</b> <b>BIIS</b> <b>13</b> <b>CHB\$</b> <b>30</b>	SHF PROGRESS P20 (CHB){DLF,HYF,IEF} P42481042 FELTONS LEGEND 242 (SOD,CHB){HYF} SHF INTRSTATE D03 G06 ET SHF RIB EYE M326 R117 (CHB){DLF,HYF,IEF} SHF MAGGIE R117 W46 P42991543 SHR BOOMER P606 R05
<b>BW</b> 2.7 <b>WW</b> 54 <b>YW</b> 81 <b>MM</b> 25 <b>M&amp;G</b> 52 <b>SC</b> 0.5 <b>FAT</b> -0.010 <b>REA</b> 0.45 <b>MARB</b> 0.20	
<b>CE Score</b> 1 <b>Act. BW</b> 89 <b>BW Ratio</b> 1.4 <b>Adj. WW</b> 684 <b>WW Ratio</b> 1.02 <b>Adj. YW</b> 1140 <b>YW Ratio</b> 0.99 <b>Frame Score</b> 5.6	
<b>Adj. BF Ratio</b> 0.18-79 <b>Adj. REA Ratio</b> 14.25-104 <b>REA/cwt</b> 1.4 <b>Adj. MARB Ratio</b> 3.61 <b>MARB Ratio</b> 97 <b>Adj. SC (CM)</b> 31.85 <b>Age of Dam</b> 2 <b>Dam's BWR</b> 1-107 <b>Dam's Production WWR</b> 1-102 <b>YWR</b> 1-99	

• The dam of this red-eyed Progress bull might be the best part of this bull. That being said, this bull is pretty good by himself. Muscle, length and performance.

# SANDHILL FARMS BULLS

<b>62</b>	<b>SHF LEON 43W Y179</b> Calved: March 2, 2011 P43181065 H/P/S/D: P
Selling: Full possession and 3/4 semen interest.	
<b>BMIS 20</b> <b>CEZ\$ 16</b> <b>BIIS 18</b> <b>CHBS 23</b>	LOEWEN 33T 5S 43W P42981997 LOEWEN M326 SIR 33T {CHB}{DLF,IEF} HVH QUEEN P35 5S {DOD}{DLF,HYF,IEF} SHF QUEEN M33 S98 P42693478 SHF MARSHAL 236G M33 {SOD,CHB} SHF INTERSTATE D03 M29
<b>BW 3.3</b> <b>WW 48</b> <b>YW 82</b> <b>MM 19</b> <b>M&amp;G 43</b> <b>SC 1.1</b> <b>FAT -0.010</b> <b>REA 0.39</b> <b>MARB 0.02</b>	
<b>CE Score 1</b> <b>Act. BW 88</b> <b>BW Ratio 97</b> <b>Adj. WW 573</b> <b>WW Ratio 86</b> <b>Adj. YW 1127</b> <b>YW Ratio 97</b> <b>Frame Score 6.0</b>	
<b>Adj. BF Ratio 0.16-70</b> <b>Adj. REA Ratio 12.2-89</b> <b>REA/cwt 1.14</b> <b>Adj. MARB Ratio 3.76</b> <b>MARB Ratio 101</b> <b>Adj. SC (CM) 35.95</b> <b>Age of Dam 5</b> <b>Dam's Production BWR 4-94</b> <b>WWR 4-95</b> <b>YWR 4-100</b>	

• Leon's pedigree combines Interstate, Marshal, Progress and M326. A lot of good genetics in this bull.

<b>63</b>	<b>SHF LEXINGTON U38 Y124</b> Calved: Feb. 17, 2011 P43181019 H/P/S/D: P
Selling: Full possession and 3/4 semen interest.	
<b>BMIS 25</b> <b>CEZ\$ 20</b> <b>BIIS 23</b> <b>CHBS 24</b>	SHF VISION R117 U38 {CHB}{DLF,IEF} P42894861 SHF RIB EYE M326 R117 {CHB}{DLF,HYF,IEF} SHF MISS PROGRESS S03 ET SHF QUEEN M33 T129 P42795845 SHF MARSHAL 236G M33 {SOD,CHB} SHF MISS M82 P74 {DOD}
<b>BW 0.6</b> <b>WW 42</b> <b>YW 58</b> <b>MM 21</b> <b>M&amp;G 42</b> <b>SC 1.1</b> <b>FAT -0.020</b> <b>REA 0.15</b> <b>MARB 0.26</b>	
<b>CE Score 1</b> <b>Act. BW 83</b> <b>BW Ratio 93</b> <b>Adj. WW 605</b> <b>WW Ratio 91</b> <b>Adj. YW 1085</b> <b>YW Ratio 94</b> <b>Frame Score 6.5</b>	
<b>Adj. BF Ratio 0.19-84</b> <b>Adj. REA Ratio 15.06-110</b> <b>REA/cwt 1.45</b> <b>Adj. MARB Ratio 3.69</b> <b>MARB Ratio 100</b> <b>Adj. SC (CM) 35.75</b> <b>Age of Dam 4</b> <b>Dam's Production BWR 3-89</b> <b>WWR 3-93</b> <b>YWR 3-95</b>	

• Here is a low BW bull with a plus 15 sq. in. REA and a ratio of 110.

<b>64</b>	<b>SHF LABON U38 Y138</b> Calved: Feb. 20, 2011 43181029 H/P/S/D: H
Selling: Full possession and 3/4 semen interest.	
<b>BMIS 29</b> <b>CEZ\$ 19</b> <b>BIIS 26</b> <b>CHBS 34</b>	SHF VISION R117 U38 {CHB}{DLF,IEF} P42894861 SHF RIB EYE M326 R117 {CHB}{DLF,HYF,IEF} SHF MISS PROGRESS S03 ET SHF MISS M326 T74 ET P42795997 KCF BENNETT 3008 M326 {CHB}{DLF,HYF,IEF} SHF MISS 105A M01
<b>BW 3.1</b> <b>WW 58</b> <b>YW 83</b> <b>MM 19</b> <b>M&amp;G 48</b> <b>SC 1.4</b> <b>FAT -0.010</b> <b>REA 0.47</b> <b>MARB 0.32</b>	
<b>CE Score 1</b> <b>Act. BW 96</b> <b>BW Ratio 107</b> <b>Adj. WW 660</b> <b>WW Ratio 99</b> <b>Adj. YW 1154</b> <b>YW Ratio 100</b> <b>Frame Score 6.5</b>	
<b>Adj. BF Ratio 0.15-66</b> <b>Adj. REA Ratio 14.89-109</b> <b>REA/cwt 1.36</b> <b>Adj. MARB Ratio 3.84</b> <b>MARB Ratio 104</b> <b>Adj. SC (CM) 37.87</b> <b>Age of Dam 4</b> <b>Dam's Production BWR 3-100</b> <b>WWR 3-93</b> <b>YWR 1-100</b>	

• Labon is a double-bred M326 son. Full sisters to his dam sell as Lots 96 and 102. This bull ranks in the top 1% of the breed for three out of four breed indexes.

<b>65</b>	<b>SHF LARRY U38 Y161</b> Calved: Feb. 26, 2011 P43181047 H/P/S/D: P
Selling: Full possession and 3/4 semen interest.	
<b>BMIS 19</b> <b>CEZ\$ 16</b> <b>BIIS 17</b> <b>CHBS 23</b>	SHF VISION R117 U38 {CHB}{DLF,IEF} P42894861 SHF RIB EYE M326 R117 {CHB}{DLF,HYF,IEF} SHF MISS PROGRESS S03 ET SHF PRINCESS 12P S123 P42693433 HVH PRINCE F202 12P ET SHF SLINGER G91 L81
<b>BW 3.7</b> <b>WW 51</b> <b>YW 63</b> <b>MM 20</b> <b>M&amp;G 45</b> <b>SC 0.7</b> <b>FAT -0.020</b> <b>REA 0.26</b> <b>MARB 0.07</b>	
<b>CE Score 1</b> <b>Act. BW 97</b> <b>BW Ratio 107</b> <b>Adj. WW 624</b> <b>WW Ratio 93</b> <b>Adj. YW 1002</b> <b>YW Ratio 87</b> <b>Frame Score 5.5</b>	
<b>Adj. BF Ratio 0.16-70</b> <b>Adj. REA Ratio 13.1-96</b> <b>REA/cwt 1.37</b> <b>Adj. MARB Ratio 3.62</b> <b>MARB Ratio 98</b> <b>Adj. SC (CM) 34.3</b> <b>Age of Dam 5</b> <b>Dam's Production BWR 4-96</b> <b>WWR 4-99</b> <b>YWR 3-94</b>	

• Larry is a Vision out of a cow that goes back to Perfect Miss. Perfect Miss was a syndicated cow that produced some really milky females.

<b>66</b>	<b>SHF LAWSON 502R Y168</b> Calved: Feb. 27, 2011 P43181054 H/P/S/D: P
Selling: Full possession and 3/4 semen interest.	
<b>BMIS 22</b> <b>CEZ\$ 18</b> <b>BIIS 18</b> <b>CHBS 30</b>	PCR 286 MR ADVISOR 502R {CHB}{DLF,HYF,IEF} P42620083 HUTH FULL HOUSE N003 {CHB} PCR JACKLYN NIKOLE 344N {DLF,IEF} SHF GOVERNESS 236G K80 P42074453 REMITALL GOVERNOR 236G {SOD,CHB} SHF STOCKLADY 417 F65
<b>BW 2.1</b> <b>WW 51</b> <b>YW 76</b> <b>MM 17</b> <b>M&amp;G 42</b> <b>SC 0.7</b> <b>FAT -0.040</b> <b>REA 0.36</b> <b>MARB 0.20</b>	
<b>CE Score 1</b> <b>Act. BW 80</b> <b>BW Ratio 89</b> <b>Adj. WW 668</b> <b>WW Ratio 100</b> <b>Adj. YW 1085</b> <b>YW Ratio 94</b> <b>Frame Score 5.6</b>	
<b>Adj. BF Ratio 0.23-101</b> <b>Adj. REA Ratio 13.26-97</b> <b>REA/cwt 1.31</b> <b>Adj. MARB Ratio 3.18</b> <b>MARB Ratio 86</b> <b>Adj. SC (CM) 34.93</b> <b>Age of Dam 11</b> <b>Dam's Production BWR 10-98</b> <b>WWR 10-93</b> <b>YWR 8-95</b>	

• Lawson is an Advisor son whose dam and grandam exhibit longevity which makes profits. Good birth to weaning growth.

<b>67</b>	<b>SHF LIEUTENANT 502R Y131</b> Calved: Feb. 19, 2011 P43181024 H/P/S/D: P
Selling: Full possession and 3/4 semen interest.	
<b>BMIS 24</b> <b>CEZ\$ 17</b> <b>BIIS 21</b> <b>CHBS 31</b>	PCR 286 MR ADVISOR 502R {CHB}{DLF,HYF,IEF} P42620083 HUTH FULL HOUSE N003 {CHB} PCR JACKLYN NIKOLE 344N {DLF,IEF} SHF RADAR R125 T61 P42795888 SHF RADAR M326 R125 {CHB}{DLF,HYF,IEF} SHF GOVERNESS 236G L102
<b>BW 2.3</b> <b>WW 55</b> <b>YW 87</b> <b>MM 20</b> <b>M&amp;G 47</b> <b>SC 1.2</b> <b>FAT -0.010</b> <b>REA 0.33</b> <b>MARB 0.25</b>	
<b>CE Score 1</b> <b>Act. BW 89</b> <b>BW Ratio 99</b> <b>Adj. WW 654</b> <b>WW Ratio 98</b> <b>Adj. YW 1116</b> <b>YW Ratio 96</b> <b>Frame Score 6.6</b>	
<b>Adj. BF Ratio 0.17-75</b> <b>Adj. REA Ratio 11.95-87</b> <b>REA/cwt 1.12</b> <b>Adj. MARB Ratio 3.25</b> <b>MARB Ratio 88</b> <b>Adj. SC (CM) 36.82</b> <b>Age of Dam 4</b> <b>Dam's Production BWR 3-98</b> <b>WWR 3-99</b> <b>YWR 3-97</b>	

• A dark red Advisor son out of a Radar daughter.

# SANDHILL FARMS BULLS

<b>68</b>	<b>SHF LEVER 33T Y123</b> Calved: Feb. 17, 2011 P43181018 H/P/S/D: P							
Selling: Full possession and 3/4 semen interest.								
<b>BMI\$</b> <b>22</b> <b>CEZ\$</b> <b>16</b> <b>BIIS</b> <b>20</b> <b>CHB\$</b> <b>26</b>	KCF BENNETT 3008 M326 {CHB}{DLF,HYF,IEF} LOEWEN M326 SIR 33T {CHB}{DLF,IEF} P42778601 HVH OKSANA 4L 33N {DLF,HYF,IEF} MM RSM STOCKMASTER 512 {SOD,CHB}{DLF,HYF,IEF} SHF GOVERNESS 236G L37 P42176503 SHF INTERSTATE D03 G80							
<b>BW</b> 3.4	<b>WW</b> 51	<b>YW</b> 82	<b>MM</b> 15	<b>M&amp;G</b> 40	<b>SC</b> 1.0	<b>FAT</b> 0.000	<b>REA</b> 0.58	<b>MARB</b> 0.09
<b>CE Score</b> 1	<b>Act. BW</b> 98	<b>BW Ratio</b> 107	<b>Adj. WW</b> 593	<b>WW Ratio</b> 89	<b>Adj. YW</b> 1124	<b>YW Ratio</b> 97	<b>Frame Score</b> 6.1	
<b>Adj. BF Ratio</b> 0.19-84	<b>Adj. REA Ratio</b> 12.87-94	<b>REA/cwt</b> 1.19	<b>Adj. MARB Ratio</b> 3.65	<b>MARB Ratio</b> 98	<b>Adj. SC (CM)</b> 35.52	<b>Age of Dam</b> 10	<b>BWR</b> 8-98	<b>Dam's Production WWR</b> 8-98
							<b>YWR</b> 6-102	



Y75 — Brother to many of the sale lots

• Lever's dam is L37. She is the dam of Wonder and many other great cattle. We have flushed several daughters and will be using her genetics for years.

<b>69</b>	<b>SHF LAMBERT 502R Y141</b> Calved: Feb. 21, 2011 P43181032 H/P/S/D: P							
Selling: Full possession and 3/4 semen interest.								
<b>BMI\$</b> <b>30</b> <b>CEZ\$</b> <b>21</b> <b>BIIS</b> <b>27</b> <b>CHB\$</b> <b>34</b>	HUTH FULL HOUSE N003 {CHB} PCR 286 MR ADVISOR 502R {CHB}{DLF,HYF,IEF} P42620083 PCR JACKLYN NIKOLE 344N {DLF,IEF} SHF PROGRESS P20 {CHB}{DLF,HYF,IEF} SHF PROGRESS T94 P42795809 SHF GOVERNESS 236G R135							
<b>BW</b> 1.6	<b>WW</b> 53	<b>YW</b> 93	<b>MM</b> 21	<b>M&amp;G</b> 48	<b>SC</b> 1.7	<b>FAT</b> -0.030	<b>REA</b> 0.23	<b>MARB</b> 0.33
<b>CE Score</b> 1	<b>Act. BW</b> 87	<b>BW Ratio</b> 97	<b>Adj. WW</b> 681	<b>WW Ratio</b> 102	<b>Adj. YW</b> 1254	<b>YW Ratio</b> 108	<b>Frame Score</b> 5.6	
<b>Adj. BF Ratio</b> 0.29-127	<b>Adj. REA Ratio</b> 15.03-110	<b>REA/cwt</b> 1.26	<b>Adj. MARB Ratio</b> 3.55	<b>MARB Ratio</b> 96	<b>Adj. SC (CM)</b> 40.98	<b>Age of Dam</b> 4	<b>BWR</b> 3-94	<b>Dam's Production WWR</b> 3-99
							<b>YWR</b> 3-102	

• Lambert has some exceptional data. He ranks in the top 1% for all four breed Indexes. Look this dude up.

<b>70</b>	<b>SHF LANDMASTER W146 Y229</b> Calved: March 19, 2011 P43181116 H/P/S/D: P							
Selling: Full possession and 3/4 semen interest.								
<b>BMI\$</b> <b>23</b> <b>CEZ\$</b> <b>16</b> <b>BIIS</b> <b>21</b> <b>CHB\$</b> <b>26</b>	SHF WEIGHT R117 W146 P42991475 SHF RIB EYE M326 R117 {CHB}{DLF,HYF,IEF} SHF QUEEN M33 S98 REMITALL GOVERNOR 236G {SOD,CHB} SHF GOVERNESS 236G K83 P42074454 SHF LADY MASTER 092 F83 {DOD}							
<b>BW</b> 3.9	<b>WW</b> 57	<b>YW</b> 91	<b>MM</b> 18	<b>M&amp;G</b> 47	<b>SC</b> 1.4	<b>FAT</b> -0.020	<b>REA</b> 0.39	<b>MARB</b> -0.05
<b>CE Score</b> 1	<b>Act. BW</b> 95	<b>BW Ratio</b> 107	<b>Adj. WW</b> 718	<b>WW Ratio</b> 114	<b>Adj. YW</b> 1176	<b>YW Ratio</b> 106	<b>Frame Score</b> 6.1	
<b>Adj. BF Ratio</b> 0.19-84	<b>Adj. REA Ratio</b> 15.26-112	<b>REA/cwt</b> 1.45	<b>Adj. MARB Ratio</b> 2.43	<b>MARB Ratio</b> 66	<b>Adj. SC (CM)</b> 38.66	<b>Age of Dam</b> 11	<b>BWR</b> 10-97	<b>Dam's Production WWR</b> 10-101
							<b>YWR</b> 8-98	

• With ratios of 114 at weaning and 112 on REA, it shows this old cow can still bring it.

<b>71</b>	<b>SHF LABOR P20 Y211</b> Calved: March 10, 2011 P43181098 H/P/S/D: P							
Selling: Full possession and 3/4 semen interest.								
<b>BMI\$</b> <b>27</b> <b>CEZ\$</b> <b>22</b> <b>BIIS</b> <b>24</b> <b>CHB\$</b> <b>30</b>	FELTONS LEGEND 242 {SOD,CHB}{HYF} SHF PROGRESS P20 {CHB}{DLF,HYF,IEF} P42481042 SHF INTRSTATE D03 G06 ET KCF BENNETT 3008 M326 {CHB}{DLF,HYF,IEF} SHF MAGGIE M326 W41 ET P42991707 SHF GOVERNESS 236G L37							
<b>BW</b> -0.4	<b>WW</b> 48	<b>YW</b> 76	<b>MM</b> 21	<b>M&amp;G</b> 45	<b>SC</b> 1.2	<b>FAT</b> 0.010	<b>REA</b> 0.27	<b>MARB</b> 0.39
<b>CE Score</b> 1	<b>Act. BW</b> 72	<b>BW Ratio</b> 87	<b>Adj. WW</b> 654	<b>WW Ratio</b> 104	<b>Adj. YW</b> 1142	<b>YW Ratio</b> 103	<b>Frame Score</b> 6.1	
<b>Adj. BF Ratio</b> 0.16-70	<b>Adj. REA Ratio</b> 13.12-96	<b>REA/cwt</b> 1.3	<b>Adj. MARB Ratio</b> 3.75	<b>MARB Ratio</b> 101	<b>Adj. SC (CM)</b> 36.34	<b>Age of Dam</b> 2	<b>BWR</b> 1-87	<b>Dam's Production WWR</b> 1-104
							<b>YWR</b> 1-103	

• A negative BW EPD and above average weaning and yearling data is pretty good, then realize this bull's dam is a full sister to Wonder.



Courtney and KSU roommates

# SANDHILL FARMS BULLS

<b>072</b>	<b>SHF LAVISH X512 Y07</b> Calved: Jan. 13, 2011 P43190528 H/P/S/D: P
Selling: Full possession and 3/4 semen interest.	
<b>BMI\$ 21</b> <b>CEZ\$ 20</b> <b>BIIS 17</b> <b>CHBS 24</b>	EFBEEF SCHU-LAR PROFICIENT N093 {CHB} (DLF,HYF,IEF) JET MR X512 {CHB}{DLF,HYF,IEF} 42602761 MR MS Y927 {DOD} R PUCKSTER 2013 {CHB}{DLF,HYF,IEF} LOEWEN MISS PUCKSTER 22W P42968645 HVH QUEEN 20K 33S
<b>BW</b> -0.5 <b>VW</b> 51 <b>YW</b> 70 <b>MM</b> 18 <b>M&amp;G</b> 43 <b>SC</b> 0.8 <b>FAT</b> 0.020 <b>REA</b> 0.23 <b>MARB</b> 0.09	
<b>CE Score</b> 1 <b>Act. BW</b> 79 <b>BW Ratio</b> 95 <b>Adj. WW</b> 688 <b>WW Ratio</b> 103 <b>Adj. YW</b> 1085 <b>YW Ratio</b> 94 <b>Frame Score</b> 5.9	
<b>Adj. BF Ratio</b> 0.17-75 <b>Adj. REA Ratio</b> 14.23-104 <b>REA/cwt</b> 1.37 <b>Adj. MARB Ratio</b> 3.31 <b>MARB Ratio</b> 89 <b>Adj. SC (CM)</b> 34.27 <b>Age of Dam</b> 2 <b>BWR</b> 1-95 <b>Dam's Production WWR</b> 1-103 <b>YWR</b> 1-94	

- Another negative BW bull with above average weaning ratios. Dam is a Puckster daughter.

<b>073</b>	<b>SHF LATIN 43W Y31</b> Calved: Jan. 30, 2011 P43181142 H/P/S/D: P
Selling: Full possession and 3/4 semen interest.	
<b>BMI\$ 15</b> <b>CEZ\$ 16</b> <b>BIIS 12</b> <b>CHBS 24</b>	LOEWEN M326 SIR 33T {CHB}{DLF,IEF} LOEWEN 33T 5S 43W P42981997 HVH QUEEN P35 5S {DOD}{DLF,HYF,IEF} LOEWEN LEGEND MISS 34T P42779274 FELTONS LEGEND 242 {SOD,CHB}{HYF} RH FELTONS 477 MISS P70
<b>BW</b> 2.3 <b>VW</b> 49 <b>YW</b> 74 <b>MM</b> 17 <b>M&amp;G</b> 41 <b>SC</b> 0.3 <b>FAT</b> 0.030 <b>REA</b> 0.26 <b>MARB</b> 0.17	
<b>CE Score</b> 1 <b>Act. BW</b> 89 <b>BW Ratio</b> 99 <b>Adj. WW</b> 612 <b>WW Ratio</b> 91 <b>Adj. YW</b> 1027 <b>YW Ratio</b> 89 <b>Frame Score</b> 6.4	
<b>Adj. BF Ratio</b> 0.21-92 <b>Adj. REA Ratio</b> 13.76-101 <b>REA/cwt</b> 1.36 <b>Adj. MARB Ratio</b> 3.8 <b>MARB Ratio</b> 103 <b>Adj. SC (CM)</b> 30.2 <b>Age of Dam</b> 4 <b>BWR</b> 3-102 <b>Dam's Production WWR</b> 3-95 <b>YWR</b> 2-94	

- Latin is a son of 43W out of a real nice, feminine, good uddered Legend daughter.

<b>074</b>	<b>SHF LAMBERT R117 Y223</b> Calved: March 14, 2011 P43181111 H/P/S/D: P
Selling: Full possession and 3/4 semen interest.	
<b>BMI\$ 21</b> <b>CEZ\$ 19</b> <b>BIIS 17</b> <b>CHBS 27</b>	KCF BENNETT 3008 M326 {CHB}{DLF,HYF,IEF} SHF RIB EYE M326 R117 {CHB}{DLF,HYF,IEF} P42584003 HVH MISS HUDSON 83K 8M SHF MISS 434V N69 {DOD} P42379943 BAR JZ TRADITION 434V {SOD}{DLF,HYF,IEF} SHF STOCK LADY 417 H12 {DOD}
<b>BW</b> 2 <b>VW</b> 50 <b>YW</b> 74 <b>MM</b> 23 <b>M&amp;G</b> 48 <b>SC</b> 0.8 <b>FAT</b> -0.030 <b>REA</b> 0.39 <b>MARB</b> 0.11	
<b>CE Score</b> 1 <b>Act. BW</b> 90 <b>BW Ratio</b> 99 <b>Adj. WW</b> 661 <b>WW Ratio</b> 105 <b>Adj. YW</b> 1087 <b>YW Ratio</b> 98 <b>Frame Score</b> 6.6	
<b>Adj. BF Ratio</b> 0.18-79 <b>Adj. REA Ratio</b> 12.83-94 <b>REA/cwt</b> 1.26 <b>Adj. MARB Ratio</b> 3.57 <b>MARB Ratio</b> 96 <b>Adj. SC (CM)</b> 34.56 <b>Age of Dam</b> 8 <b>BWR</b> 7-104 <b>Dam's Production WWR</b> 7-107 <b>YWR</b> 5-102	

- The dam of Lambert has a WW ratio of 106 on 7 calves. She is sound and built to last.

<b>075</b>	<b>SHF LOUISIANA 40W Y219</b> Calved: March 11, 2011 P43181106 H/P/S/D: P
Selling: Full possession and 3/4 semen interest.	
<b>BMI\$ 26</b> <b>CEZ\$ 19</b> <b>BIIS 23</b> <b>CHBS 28</b>	NJW 45P 139J FULL TANK 134S BAR-H IDEAL 40W {DLF,HYF,IEF} P43051117 KR1 SUSIE 4L SHF VICKY R117 U53 P42938214 SHF RIB EYE M326 R117 {CHB}{DLF,HYF,IEF} SHF MISS PROGRESS S59
<b>BW</b> 1.9 <b>VW</b> 52 <b>YW</b> 84 <b>MM</b> 20 <b>M&amp;G</b> 46 <b>SC</b> 1.4 <b>FAT</b> 0.000 <b>REA</b> 0.35 <b>MARB</b> 0.17	
<b>CE Score</b> 1 <b>Act. BW</b> 86 <b>BW Ratio</b> 99 <b>Adj. WW</b> 643 <b>WW Ratio</b> 102 <b>Adj. YW</b> 1141 <b>YW Ratio</b> 103 <b>Frame Score</b> 6.4	
<b>Adj. BF Ratio</b> 0.27-119 <b>Adj. REA Ratio</b> 15.3-112 <b>REA/cwt</b> 1.48 <b>Adj. MARB Ratio</b> 3.57 <b>MARB Ratio</b> 96 <b>Adj. SC (CM)</b> 37.65 <b>Age of Dam</b> 3 <b>BWR</b> 2-90 <b>Dam's Production WWR</b> 2-97 <b>YWR</b> 2-97	

- Nice birth to yearling spread. Notice the 15.3 sq. in. REA. Grandam, S59, sold to S&S Farm in last year's sale.

<b>076</b>	<b>SHF LARYL 40W Y203</b> Calved: March 7, 2011 P43181089 H/P/S/D: P
Selling: Full possession and 3/4 semen interest.	
<b>BMI\$ 18</b> <b>CEZ\$ 17</b> <b>BIIS 16</b> <b>CHBS 24</b>	NJW 45P 139J FULL TANK 134S BAR-H IDEAL 40W {DLF,HYF,IEF} P43051117 KR1 SUSIE 4L SHF PROGRESS P20 {CHB}{DLF,HYF,IEF} SHF MISS M326 S96 SHF PROGRESS P20 U136 P42894604
<b>BW</b> 1.8 <b>VW</b> 46 <b>YW</b> 69 <b>MM</b> 19 <b>M&amp;G</b> 42 <b>SC</b> 0.6 <b>FAT</b> -0.010 <b>REA</b> 0.30 <b>MARB</b> 0.13	
<b>CE Score</b> 1 <b>Act. BW</b> 88 <b>BW Ratio</b> 101 <b>Adj. WW</b> 582 <b>WW Ratio</b> 92 <b>Adj. YW</b> 988 <b>YW Ratio</b> 89 <b>Frame Score</b> 6.1	
<b>Adj. BF Ratio</b> 0.22-97 <b>Adj. REA Ratio</b> 12.17-89 <b>REA/cwt</b> 1.34 <b>Adj. MARB Ratio</b> 3.45 <b>MARB Ratio</b> 93 <b>Adj. SC (CM)</b> 32.34 <b>Age of Dam</b> 3 <b>BWR</b> 2-95 <b>Dam's Production WWR</b> 2-94 <b>YWR</b> 2-92	

- Here is an Ideal 40W out of a Progress daughter.

<b>077</b>	<b>SHF LONG ISLAND P20 Y119</b> Calved: Feb. 16, 2011 P43181014 H/P/S/D: P
Selling: Full possession and 3/4 semen interest.	
<b>BMI\$ 27</b> <b>CEZ\$ 22</b> <b>BIIS 24</b> <b>CHBS 27</b>	FELTONS LEGEND 242 {SOD,CHB}{HYF} SHF PROGRESS P20 {CHB}{DLF,HYF,IEF} P42481042 SHF INTRSTATE D03 G06 ET SHF TUG R117 T57 {CHB} SHF CISCO T57 W81 P42991569 SHF PROGRESS T94
<b>BW</b> -0.8 <b>VW</b> 43 <b>YW</b> 61 <b>MM</b> 24 <b>M&amp;G</b> 46 <b>SC</b> 1.2 <b>FAT</b> 0.020 <b>REA</b> 0.00 <b>MARB</b> 0.44	
<b>CE Score</b> 1 <b>Act. BW</b> 78 <b>BW Ratio</b> 94 <b>Adj. WW</b> 642 <b>WW Ratio</b> 96 <b>Adj. YW</b> 1100 <b>YW Ratio</b> 95 <b>Frame Score</b> 6.1	
<b>Adj. BF Ratio</b> 0.22-97 <b>Adj. REA Ratio</b> 12.49-91 <b>REA/cwt</b> 1.24 <b>Adj. MARB Ratio</b> 4.84 <b>MARB Ratio</b> 131 <b>Adj. SC (CM)</b> 37.27 <b>Age of Dam</b> 2 <b>BWR</b> 1-94 <b>Dam's Production WWR</b> 1-96 <b>YWR</b> 1-95	

- A negative BW bull with a 131 ratio on his MARB. This bull shows the predictability of the Progress on Tug.

# SANDHILL FARMS BULLS

<b>78</b>	<b>SHF LEONARD 502R Y114</b> Calved: Feb. 16, 2011 P43181010 H/P/S/D: P							
Selling: Full possession and 3/4 semen interest.								
<b>BMI\$</b> <b>28</b> <b>CEZ\$</b> <b>21</b> <b>BIIS</b> <b>24</b> <b>CHBS</b> <b>34</b>	HUTH FULL HOUSE N003 {CHB} PCR 286 MR ADVISOR 502R {CHB}{DLF,HYF,IEF} P42620083 PCR JACKLYN NIKOLE 344N {DLF,IEF} SHF RIB EYE R117 U75 P42894908 SHF RIB EYE M326 R117 {CHB}{DLF,HYF,IEF} SHF MISS PROGRESS S61							
<b>BW</b> 0.6	<b>WW</b> 54	<b>YW</b> 85	<b>MM</b> 21	<b>M&amp;G</b> 48	<b>SC</b> 1.3	<b>FAT</b> -0.030	<b>REA</b> 0.31	<b>MARB</b> 0.31
<b>CE Score</b> 1	<b>Act. BW</b> 83	<b>BW Ratio</b> 94	<b>Adj. WW</b> 665	<b>WW Ratio</b> 99	<b>Adj. YW</b> 1134	<b>YW Ratio</b> 98	<b>Frame Score</b> 6.4	
<b>Adj. BF Ratio</b> 0.19-84	<b>Adj. REA Ratio</b> 13.95-102	<b>REA/cwt</b> 1.3	<b>Adj. MARB Ratio</b> 3.2	<b>MARB Ratio</b> 86	<b>Adj. SC (CM)</b> 35.94	<b>Age of Dam</b> 3	<b>Dam's Production</b> 2-96	<b>WWR</b> 2-94

- An Advisor son that ranks in the top 1% for all four of the breed indexes.

<b>79</b>	<b>SHF LEISURE U38 Y112</b> Calved: Feb. 15, 2011 P43181008 H/P/S/D: P							
Selling: Full possession and 3/4 semen interest.								
<b>BMI\$</b> <b>21</b> <b>CEZ\$</b> <b>20</b> <b>BIIS</b> <b>16</b> <b>CHBS</b> <b>29</b>	SHF RIB EYE M326 R117 {CHB}{DLF,HYF,IEF} SHF VISION R117 U38 {CHB}{DLF,IEF} P42894861 SHF MISS PROGRESS S03 ET SHF PHOENIX M33 P68 {CHB} SHF CHEER P68 W58 P42991555 SHF BOOMER P606 R08 {DLF,HYF,IEF}							
<b>BW</b> -1.3	<b>WW</b> 45	<b>YW</b> 67	<b>MM</b> 25	<b>M&amp;G</b> 48	<b>SC</b> 0.5	<b>FAT</b> 0.000	<b>REA</b> 0.43	<b>MARB</b> 0.38
<b>CE Score</b> 1	<b>Act. BW</b> 66	<b>BW Ratio</b> 79	<b>Adj. WW</b> 673	<b>WW Ratio</b> 101	<b>Adj. YW</b> 1173	<b>YW Ratio</b> 101	<b>Frame Score</b> 6.2	
<b>Adj. BF Ratio</b> 0.22-97	<b>Adj. REA Ratio</b> 13.89-102	<b>REA/cwt</b> 1.3	<b>Adj. MARB Ratio</b> 3.66	<b>MARB Ratio</b> 99	<b>Adj. SC (CM)</b> 31.03	<b>Age of Dam</b> 2	<b>Dam's Production</b> 1-79	<b>WWR</b> 1-101

- Low BW and small to moderate framed. If you are wanting to maintain weight and smaller cows, don't overlook Leisure.

<b>80</b>	<b>SHF LEGITIMATE U38 Y111</b> Calved: Feb. 15, 2011 P43181007 H/P/S/D: P							
Selling: Full possession and 3/4 semen interest.								
<b>BMI\$</b> <b>26</b> <b>CEZ\$</b> <b>21</b> <b>BIIS</b> <b>23</b> <b>CHBS</b> <b>28</b>	SHF RIB EYE M326 R117 {CHB}{DLF,HYF,IEF} SHF VISION R117 U38 {CHB}{DLF,IEF} P42894861 SHF MISS PROGRESS S03 ET SHF TAHOE R117 T100 {CHB} SHF CHEER T100 W75 P42991567 SHF MISS M82 P74 {DOD}							
<b>BW</b> -0.4	<b>WW</b> 48	<b>YW</b> 61	<b>MM</b> 21	<b>M&amp;G</b> 45	<b>SC</b> 1.0	<b>FAT</b> -0.020	<b>REA</b> 0.33	<b>MARB</b> 0.27
<b>CE Score</b> 1	<b>Act. BW</b> 69	<b>BW Ratio</b> 83	<b>Adj. WW</b> 647	<b>WW Ratio</b> 97	<b>Adj. YW</b> 1064	<b>YW Ratio</b> 92	<b>Frame Score</b> 6.9	
<b>Adj. BF Ratio</b> 0.24-105	<b>Adj. REA Ratio</b> 12.24-90	<b>REA/cwt</b> 1.26	<b>Adj. MARB Ratio</b> 3.87	<b>MARB Ratio</b> 104	<b>Adj. SC (CM)</b> 34.14	<b>Age of Dam</b> 2	<b>Dam's Production</b> 1-83	<b>WWR</b> 1-97

- Here is a negative BW bull with a Tahoe daughter as his dam.



Dove hunters

<b>81</b>	<b>SHF LEEWAY U38 Y106</b> Calved: Feb. 14, 2011 P43181004 H/P/S/D: P							
Selling: Full possession and 3/4 semen interest.								
<b>BMI\$</b> <b>26</b> <b>CEZ\$</b> <b>19</b> <b>BIIS</b> <b>24</b> <b>CHBS</b> <b>30</b>	SHF RIB EYE M326 R117 {CHB}{DLF,HYF,IEF} SHF VISION R117 U38 {CHB}{DLF,IEF} P42894861 SHF MISS PROGRESS S03 ET SHF PHOENIX M33 P68 {CHB} SHF 30U P68 W94 ET P42991717 SHF GOVERNESS 236G L64							
<b>BW</b> 1.8	<b>WW</b> 50	<b>YW</b> 70	<b>MM</b> 23	<b>M&amp;G</b> 48	<b>SC</b> 1.2	<b>FAT</b> 0.000	<b>REA</b> 0.16	<b>MARB</b> 0.40
<b>CE Score</b> 1	<b>Act. BW</b> 83	<b>BW Ratio</b> 100	<b>Adj. WW</b> 694	<b>WW Ratio</b> 104	<b>Adj. YW</b> 1193	<b>YW Ratio</b> 103	<b>Frame Score</b> 6.2	
<b>Adj. BF Ratio</b> 0.22-97	<b>Adj. REA Ratio</b> 12.7-93	<b>REA/cwt</b> 1.16	<b>Adj. MARB Ratio</b> 3.61	<b>MARB Ratio</b> 97	<b>Adj. SC (CM)</b> 37.21	<b>Age of Dam</b> 2	<b>Dam's Production</b> 1-100	<b>WWR</b> 1-103

- Leeway's pedigree combines some real good ones. Vision's dam, S03, Phoenix and on the bottom, L64. L64 was the cornerstone of our first sale.

<b>82</b>	<b>SHF LANN 502R Y157</b> Calved: Feb. 24, 2011 P43181044 H/P/S/D: P							
Selling: Full possession and 3/4 semen interest.								
<b>BMI\$</b> <b>23</b> <b>CEZ\$</b> <b>14</b> <b>BIIS</b> <b>20</b> <b>CHBS</b> <b>33</b>	HUTH FULL HOUSE N003 {CHB} PCR 286 MR ADVISOR 502R {CHB}{DLF,HYF,IEF} P42620083 PCR JACKLYN NIKOLE 344N {DLF,IEF} SHF RADAR M326 R125 {CHB}{DLF,HYF,IEF} SHF RADAR R125 T37 {DLF,HYF,IEF} P42795838 SHF BOOMER P606 R08 {DLF,HYF,IEF}							
<b>BW</b> 5	<b>WW</b> 59	<b>YW</b> 90	<b>MM</b> 22	<b>M&amp;G</b> 52	<b>SC</b> 1.1	<b>FAT</b> -0.030	<b>REA</b> 0.44	<b>MARB</b> 0.23
<b>CE Score</b> 1	<b>Act. BW</b> 103	<b>BW Ratio</b> 115	<b>Adj. WW</b> 658	<b>WW Ratio</b> 98	<b>Adj. YW</b> 1090	<b>YW Ratio</b> 94	<b>Frame Score</b> 5.4	
<b>Adj. BF Ratio</b> 0.15-66	<b>Adj. REA Ratio</b> 12.75-93	<b>REA/cwt</b> 1.23	<b>Adj. MARB Ratio</b> 3.31	<b>MARB Ratio</b> 89	<b>Adj. SC (CM)</b> 35.94	<b>Age of Dam</b> 4	<b>Dam's Production</b> 3-96	<b>WWR</b> 3-100

- Lann is out of a Radar daughter. These Radar daughters are making very good cows.

# SANDHILL FARMS BULLS

<b>83</b>	<b>SHF LINTON 502R Y186</b> Calved: March 4, 2011 P43181070 H/P/S/D: P
Selling: Full possession and 3/4 semen interest.	
<b>BMIS</b> <b>25</b> <b>CEZ\$</b> <b>16</b> <b>BIIS</b> <b>23</b> <b>CHBS</b> <b>32</b>	HUTH FULL HOUSE N003 {CHB} PCR 286 MR ADVISOR 502R {CHB}{DLF,HYF,IEF} P42620083 PCR JACKLYN NIKOLE 344N {DLF,IEF} SHF SOLDIER S66 U152 P42894670 SHF SOLDIER 13P S66 {CHB} SHF BOOMER P606 R80
<b>BW</b> <b>WW</b> <b>YW</b> <b>MM</b> <b>M&amp;G</b> <b>SC</b> <b>FAT</b> <b>REA</b> <b>MARB</b>	2.6 51 90 21 47 1.3 0.000 0.36 0.39
<b>CE Score</b> <b>Act. BW</b> <b>BW Ratio</b> <b>Adj. WW</b> <b>WW Ratio</b> <b>Adj. YW</b> <b>YW Ratio</b> <b>Frame Score</b>	1 83 95 609 91 1196 103 5.7
<b>Adj. BF Ratio</b> <b>Adj. REA Ratio</b> <b>REA/cwt</b> <b>Adj. MARB Ratio</b> <b>MARB Ratio</b> <b>Adj. SC (CM)</b> <b>Age of Dam</b> <b>Dam's Production</b>	0.18-79 13.97-102 1.27 3.72 100 37.49 2 2-95 2-95 2-101

• Here is an Advisor son that goes back to the dam of Tug, P80. Nice set of EPDs.

<b>84</b>	<b>SHF LIGHT U38 Y137</b> Calved: Feb. 20, 2011 P43181028 H/P/S/D: P
Selling: Full possession and 3/4 semen interest.	
<b>BMIS</b> <b>23</b> <b>CEZ\$</b> <b>20</b> <b>BIIS</b> <b>21</b> <b>CHBS</b> <b>27</b>	SHF RIB EYE M326 R117 {CHB}{DLF,HYF,IEF} SHF VISION R117 U38 {CHB}{DLF,IEF} P42894861 SHF MISS PROGRESS S03 ET SHF MISS M326 T30 ET P42795920 KCF BENNETT 3008 M326 {CHB}{DLF,HYF,IEF} SHF GOVERNESS 236G L64
<b>BW</b> <b>WW</b> <b>YW</b> <b>MM</b> <b>M&amp;G</b> <b>SC</b> <b>FAT</b> <b>REA</b> <b>MARB</b>	0.8 42 52 20 41 0.6 -0.010 0.15 0.41
<b>CE Score</b> <b>Act. BW</b> <b>BW Ratio</b> <b>Adj. WW</b> <b>WW Ratio</b> <b>Adj. YW</b> <b>YW Ratio</b> <b>Frame Score</b>	1 85 95 602 90 1011 87 6.7
<b>Adj. BF Ratio</b> <b>Adj. REA Ratio</b> <b>REA/cwt</b> <b>Adj. MARB Ratio</b> <b>MARB Ratio</b> <b>Adj. SC (CM)</b> <b>Age of Dam</b> <b>Dam's Production</b>	0.22-97 13.8-101 1.43 4.15 112 31.73 4 3-93 3-92 3-92

• A light BW son of Vision with a 112 ratio on MARB.

<b>85</b>	<b>SHF LIGHTNING P20 Y87</b> Calved: Feb. 11, 2011 P43181179 H/P/S/D: P
Selling: Full possession and 3/4 semen interest.	
<b>BMIS</b> <b>23</b> <b>CEZ\$</b> <b>23</b> <b>BIIS</b> <b>20</b> <b>CHBS</b> <b>26</b>	FELTONS LEGEND 242 {SOD,CHB}{HYF} SHF PROGRESS P20 {CHB}{DLF,HYF,IEF} P42481042 SHF INTRSTATE D03 G06 ET SHF RIB EYE M326 R117 {CHB}{DLF,HYF,IEF} SHF CISCO R117 W82 P42991570 SHF POSITIVE MISS 73C S76
<b>BW</b> <b>WW</b> <b>YW</b> <b>MM</b> <b>M&amp;G</b> <b>SC</b> <b>FAT</b> <b>REA</b> <b>MARB</b>	-1.7 44 54 23 44 0.7 0.010 0.02 0.37
<b>CE Score</b> <b>Act. BW</b> <b>BW Ratio</b> <b>Adj. WW</b> <b>WW Ratio</b> <b>Adj. YW</b> <b>YW Ratio</b> <b>Frame Score</b>	1 69 83 650 97 1013 88 6.2
<b>Adj. BF Ratio</b> <b>Adj. REA Ratio</b> <b>REA/cwt</b> <b>Adj. MARB Ratio</b> <b>MARB Ratio</b> <b>Adj. SC (CM)</b> <b>Age of Dam</b> <b>Dam's Production</b>	0.21-92 12.57-92 1.35 4.03 109 34.03 2 1-83 1-97 1-88

• Here is one of the lower BW bulls in the sale. Also, notice he ranks in the top 1% of the breed for all three calving ease indicators.

<b>86</b>	<b>SHF LANDSMAN 40W Y243</b> Calved: April 11, 2011 P43181131 H/P/S/D: P
Selling: Full possession and 3/4 semen interest.	
<b>BMIS</b> <b>18</b> <b>CEZ\$</b> <b>14</b> <b>BIIS</b> <b>16</b> <b>CHBS</b> <b>26</b>	NJW 45P 139J FULL TANK 134S BAR-H IDEAL 40W {DLF,HYF,IEF} P43051117 KR1 SUSIE 4L SHF RIB EYE M326 R117 {CHB}{DLF,HYF,IEF} SHF RIB EYE R117 T33 P42795829 SHF BOOMER P606 R43
<b>BW</b> <b>WW</b> <b>YW</b> <b>MM</b> <b>M&amp;G</b> <b>SC</b> <b>FAT</b> <b>REA</b> <b>MARB</b>	3.9 55 86 20 48 0.9 0.010 0.49 0.06
<b>CE Score</b> <b>Act. BW</b> <b>BW Ratio</b> <b>Adj. WW</b> <b>WW Ratio</b> <b>Adj. YW</b> <b>YW Ratio</b> <b>Frame Score</b>	1 94 106 640 102 1006 87 6.2
<b>Adj. BF Ratio</b> <b>Adj. REA Ratio</b> <b>REA/cwt</b> <b>Adj. MARB Ratio</b> <b>MARB Ratio</b> <b>Adj. SC (CM)</b> <b>Age of Dam</b> <b>Dam's Production</b>	0.20-0 11.7-0 1.36 3.2-0 4 3-104 3-103 2-103

• Landsman is the youngest bull in the sale, but study him and he could be one of your proudest purchases. His ratios are absent as he didn't fit the age for contemporaries.

<b>87</b>	<b>SHF LABEL 14W Y205</b> Calved: March 7, 2011 P43181091 H/P/S/D: P
Selling: Full possession and 3/4 semen interest.	
<b>BMIS</b> <b>27</b> <b>CEZ\$</b> <b>22</b> <b>BIIS</b> <b>23</b> <b>CHBS</b> <b>30</b>	KCF BENNETT 3008 M326 {CHB}{DLF,HYF,IEF} LOEWEN M326 14W {DLF,HYF,IEF} P42968657 HVH QUEEN N12 9S SHF RIB EYE M326 R117 {CHB}{DLF,HYF,IEF} LOEWEN MISS RIB EYE 27W P42968661 LOEWEN P20 MISS 1T {DLF,HYF,IEF}
<b>BW</b> <b>WW</b> <b>YW</b> <b>MM</b> <b>M&amp;G</b> <b>SC</b> <b>FAT</b> <b>REA</b> <b>MARB</b>	-0.4 46 68 20 43 1.0 -0.010 0.30 0.37
<b>CE Score</b> <b>Act. BW</b> <b>BW Ratio</b> <b>Adj. WW</b> <b>WW Ratio</b> <b>Adj. YW</b> <b>YW Ratio</b> <b>Frame Score</b>	1 69 83 602 96 1041 94 6.7
<b>Adj. BF Ratio</b> <b>Adj. REA Ratio</b> <b>REA/cwt</b> <b>Adj. MARB Ratio</b> <b>MARB Ratio</b> <b>Adj. SC (CM)</b> <b>Age of Dam</b> <b>Dam's Production</b>	0.22-97 14.42-105 1.57 4.32 117 32.04 2 1-83 1-96 1-94

• Here is another negative BW bull with a 117 ratio on MARB.

<b>88</b>	<b>SHF LAUNCH P20 Y36</b> Calved: Feb. 3, 2011 P43181147 H/P/S/D: P
Selling: Full possession and 3/4 semen interest.	
<b>BMIS</b> <b>25</b> <b>CEZ\$</b> <b>22</b> <b>BIIS</b> <b>22</b> <b>CHBS</b> <b>27</b>	FELTONS LEGEND 242 {SOD,CHB}{HYF} SHF PROGRESS P20 {CHB}{DLF,HYF,IEF} P42481042 SHF INTRSTATE D03 G06 ET SHF RIB EYE M326 R117 {CHB}{DLF,HYF,IEF} SHF 86X R117 W40 P42991539 SHF GOVERNESS 236G S73
<b>BW</b> <b>WW</b> <b>YW</b> <b>MM</b> <b>M&amp;G</b> <b>SC</b> <b>FAT</b> <b>REA</b> <b>MARB</b>	-1.1 42 52 23 44 0.8 0.000 0.15 0.43
<b>CE Score</b> <b>Act. BW</b> <b>BW Ratio</b> <b>Adj. WW</b> <b>WW Ratio</b> <b>Adj. YW</b> <b>YW Ratio</b> <b>Frame Score</b>	1 70 84 620 93 1006 87 5.7
<b>Adj. BF Ratio</b> <b>Adj. REA Ratio</b> <b>REA/cwt</b> <b>Adj. MARB Ratio</b> <b>MARB Ratio</b> <b>Adj. SC (CM)</b> <b>Age of Dam</b> <b>Dam's Production</b>	0.2-88 12.03-88 1.29 4.29 116 33.81 2 1-84 1-93 1-87

• One of the top calving ease bulls in the sale.

# SANDHILL FARMS BULLS

<b>089</b>	<b>SHF LYELL P20 Y76</b> Calved: Feb. 10, 2011 P43181171 H/P/S/D: P
Selling: Full possession and 3/4 semen interest.	
<b>BMI\$ 28</b> <b>CEZ\$ 24</b> <b>BIIS 27</b> <b>CHBS 24</b>	FELTONS LEGEND 242 (SOD,CHB){HYF} SHF PROGRESS P20 (CHB){DLF,HYF,IEF} P42481042 SHF INTRSTATE D03 G06 ET KCF BENNETT 3008 M326 (CHB){DLF,HYF,IEF} SHF 30U M326 W37 ET P42991705 SHF GOVERNESS 236G N113
<b>BW -1.7</b> <b>WW 39</b> <b>YW 48</b> <b>MM 21</b> <b>M&amp;G 41</b> <b>SC 1.2</b> <b>FAT 0.010</b> <b>REA 0.08</b> <b>MARB 0.39</b>	
<b>CE Score 1</b> <b>Act. BW 67</b> <b>BW Ratio 80</b> <b>Adj. WW 595</b> <b>WW Ratio 89</b> <b>Adj. YW 996</b> <b>YW Ratio 86</b> <b>Frame Score 6.7</b>	
<b>Adj. BF Ratio</b> <b>Adj. REA Ratio</b> <b>REA/cwt</b> <b>Adj. MARB Ratio</b> <b>MARB Ratio</b> <b>Adj. SC (CM)</b> <b>Age of Dam</b> <b>BWR</b> <b>Dam's Production WWR</b> <b>YWR</b>	
0.21-92 11.89-87 1.3 4.07 110 37.09 2 1-80 1-89 1-86	

• Lyell is a light BW son of Progress that goes back to a super donor, N113, on the bottom side.



Travis and Brooke

<b>090</b>	<b>SHF LEGION U38 Y109 ET</b> Calved: Feb. 15, 2011 P43181005 H/P/S/D: P
Selling: Full possession and 3/4 semen interest.	
<b>BMI\$ 28</b> <b>CEZ\$ 20</b> <b>BIIS 25</b> <b>CHBS 33</b>	SHF VISION R117 U38 (CHB){DLF,IEF} P42894861 SHF RIB EYE M326 R117 (CHB){DLF,HYF,IEF} SHF MISS PROGRESS S03 ET KCF BENNETT 3008 M326 (CHB){DLF,HYF,IEF} SHF MISS M326 T16 ET {DLF,HYF,IEF} P42795994 SHF MISS 105A M01
<b>BW 2</b> <b>WW 55</b> <b>YW 80</b> <b>MM 21</b> <b>M&amp;G 48</b> <b>SC 1.3</b> <b>FAT -0.020</b> <b>REA 0.37</b> <b>MARB 0.32</b>	
<b>CE Score 1</b> <b>Act. BW 90</b> <b>BW Ratio ET</b> <b>Adj. WW 686</b> <b>WW Ratio ET</b> <b>Adj. YW 1026</b> <b>YW Ratio ET</b> <b>Frame Score 5.7</b>	
<b>Adj. BF Ratio</b> <b>Adj. REA Ratio</b> <b>REA/cwt</b> <b>Adj. MARB Ratio</b> <b>MARB Ratio</b> <b>Adj. SC (CM)</b> <b>Age of Dam</b> <b>BWR</b> <b>Dam's Production WWR</b> <b>YWR</b>	
0.19-74 12.34-90 1.24 3.84 108 35.92 4 3-99 3-100 3-105	

• An ET son of T16. 108 ratio on MARB.



SHF Miss M326 T16 ET — Dam of Lot 90

<b>091</b>	<b>SHF LAKOTA 40W Y139</b> Calved: Feb. 20, 2011 P43185353 H/P/S/D: P
Selling: Full possession and 3/4 semen interest.	
<b>BMI\$ 22</b> <b>CEZ\$ 16</b> <b>BIIS 20</b> <b>CHBS 23</b>	BAR-H IDEAL 40W (DLF,HYF,IEF) P43051117 NJW 45P 139J FULL TANK 134S KR1 SUSIE 4L KCF BENNETT 3008 M326 (CHB){DLF,HYF,IEF} SHF MISS M326 T90 P42795867 SHF POSITIVE MISS 73C N62 {DOD}
<b>BW 3.4</b> <b>WW 49</b> <b>YW 69</b> <b>MM 18</b> <b>M&amp;G 42</b> <b>SC 1.0</b> <b>FAT 0.020</b> <b>REA 0.28</b> <b>MARB 0.17</b>	
<b>CE Score 1</b> <b>Act. BW 93</b> <b>BW Ratio 104</b> <b>Adj. WW 581</b> <b>WW Ratio 87</b> <b>Adj. YW 999</b> <b>YW Ratio 86</b> <b>Frame Score 6.7</b>	
<b>Adj. BF Ratio</b> <b>Adj. REA Ratio</b> <b>REA/cwt</b> <b>Adj. MARB Ratio</b> <b>MARB Ratio</b> <b>Adj. SC (CM)</b> <b>Age of Dam</b> <b>BWR</b> <b>Dam's Production WWR</b> <b>YWR</b>	
0.26-114 11.77-86 1.23 4.05 109 34.8 4 3-102 2-94 2-96	

• An Ideal 40W that goes back to the dam of Marshal on the bottom.

<b>092</b>	<b>SHF LINDEN 502R Y77</b> Calved: Feb. 10, 2011 P43181172 H/P/S/D: P
Selling: Full possession and 3/4 semen interest.	
<b>BMI\$ 25</b> <b>CEZ\$ 20</b> <b>BIIS 21</b> <b>CHBS 32</b>	HUTH FULL HOUSE N003 (CHB) PCR 286 MR ADVISOR 502R (CHB){DLF,HYF,IEF} P42620083 PCR JACKLYN NIKOLE 344N (DLF,IEF) SHF PROGRESS P20 (CHB){DLF,HYF,IEF} SHF CHEER P20 W88 P42991576 SHF RADAR R125 T87
<b>BW -0.2</b> <b>WW 52</b> <b>YW 81</b> <b>MM 20</b> <b>M&amp;G 46</b> <b>SC 1.0</b> <b>FAT -0.020</b> <b>REA 0.30</b> <b>MARB 0.29</b>	
<b>CE Score 1</b> <b>Act. BW 76</b> <b>BW Ratio 91</b> <b>Adj. WW 647</b> <b>WW Ratio 97</b> <b>Adj. YW 1103</b> <b>YW Ratio 95</b> <b>Frame Score 5.9</b>	
<b>Adj. BF Ratio</b> <b>Adj. REA Ratio</b> <b>REA/cwt</b> <b>Adj. MARB Ratio</b> <b>MARB Ratio</b> <b>Adj. SC (CM)</b> <b>Age of Dam</b> <b>BWR</b> <b>Dam's Production WWR</b> <b>YWR</b>	
0.19-84 13.35-98 1.32 3.07 83 36.06 2 1-91 1-97 1-95	

• A negative BW Advisor son. His dam is a moderate framed, big ribbed daughter of Progress.

# SANDHILL FARMS BULLS

<b>93</b>	<b>SHF LAYNE 40W Y220</b> Calved: March 12, 2011 P43181108 H/P/S/D: P								
Selling: Full possession and 3/4 semen interest.									
<b>BMIS</b> <b>23</b> <b>CEZ\$</b> <b>18</b> <b>BIIS</b> <b>21</b> <b>CHBS</b> <b>23</b>	NJW 45P 139J FULL TANK 134S BAR-H IDEAL 40W {DLF,HYF,IEF} P43051117 KR1 SUSIE 4L SHF PHOENIX M33 P68 {CHB} SHF PHOENIX P68 U29 ET P42938210 HVH MISS HUDSON 83K 8M								
<b>BW</b> 1.5	<b>WW</b> 49	<b>YW</b> 71	<b>MM</b> 21	<b>M&amp;G</b> 46	<b>SC</b> 1.2	<b>FAT</b> 0.000	<b>REA</b> 0.23	<b>MARB</b> 0.10	
<b>CE Score</b> 1	<b>Act. BW</b> 83	<b>BW Ratio</b> 95	<b>Adj. WW</b> 619	<b>WW Ratio</b> 98	<b>Adj. YW</b> 1040	<b>YW Ratio</b> 94	<b>Frame Score</b> 6.2		
<b>Adj. BF Ratio</b> 0.18-79	<b>Adj. REA Ratio</b> 13.21-97	<b>REA/cwt</b> 1.4	<b>Adj. MARB Ratio</b> 2.78	<b>MARB Ratio</b> 75	<b>Adj. SC (CM)</b> 36.11	<b>Age of Dam</b> 3	<b>BWR</b> 2-94	<b>Dam's Production WWR</b> 2-100	<b>YWR</b> 2-95

• A younger son of Ideal 40W. His dam is a Phoenix out of Rib Eye's dam.

<b>94</b>	<b>SHF LAKEWOOD 43W Y221</b> Calved: March 12, 2011 P43181109 H/P/S/D: P								
Selling: Full possession and 3/4 semen interest.									
<b>BMIS</b> <b>20</b> <b>CEZ\$</b> <b>16</b> <b>BIIS</b> <b>17</b> <b>CHBS</b> <b>26</b>	LOEWEN M326 SIR 33T {CHB}{DLF,IEF} LOEWEN 33T 5S 43W P42981997 HVH QUEEN P35 5S {DOD}{DLF,HYF,IEF} SHF RIB EYE M326 R117 {CHB}{DLF,HYF,IEF} SHF RIB EYE R117 T108 {DLF,HYF,IEF} P42795914 SHF MISS KEYNOTE 20X E39 {DOD}								
<b>BW</b> 4.8	<b>WW</b> 56	<b>YW</b> 86	<b>MM</b> 22	<b>M&amp;G</b> 50	<b>SC</b> 1.0	<b>FAT</b> 0.010	<b>REA</b> 0.29	<b>MARB</b> 0.11	
<b>CE Score</b> 1	<b>Act. BW</b> 102	<b>BW Ratio</b> 115	<b>Adj. WW</b> 614	<b>WW Ratio</b> 97	<b>Adj. YW</b> 1040	<b>YW Ratio</b> 94	<b>Frame Score</b> 6.2		
<b>Adj. BF Ratio</b> 0.16-70	<b>Adj. REA Ratio</b> 12.49-91	<b>REA/cwt</b> 1.3	<b>Adj. MARB Ratio</b> 3.68	<b>MARB Ratio</b> 99	<b>Adj. SC (CM)</b> 33.29	<b>Age of Dam</b> 4	<b>BWR</b> 3-99	<b>Dam's Production WWR</b> 3-105	<b>YWR</b> 3-103

• Lakewood's dam is an R117 who is out of Marshal's full sister.



*Fall from the kitchen window*



*Showmanship winner*



*Tyler, Arnita, Ron, Courtney, Kevin, Brooke, Travis and Vera*



# A few notes about the registered cows selling.

- We are selling all the 5-year-old cows that have been ultrasound checked to be carrying a heifer calf.
- I feel we can offer a no-holes, predictable female package with many future productive years.

## The thinking behind this program is:

1. We will be keeping all of our registered heifer calves, thus we can turn our generations faster in the cow herd.
2. We will have time to identify the donors, flush embryos and use the genetics from these cows for our future, then offer them to you.
3. By selling cows with heifer calves, we can have some stability in our cow herd and gather data on the bulls for the following year's sale.
4. We will identify the bottom end of the cows and cull for any reason necessary.
5. These cows will sell with complete performance and ultrasound records.
6. We will be giving you the opportunity to purchase the very top end of these young cows.



# SANDHILL FARMS FEMALES



Lot 95 — SHF Progress T101

<b>95</b>		<b>SHF PROGRESS T101</b>		Calved: Feb. 24, 2011	P42795835	H/P/S/D: P		
Selling: Full possession and 100% interest.								
<b>BMI\$</b> <b>21</b>	SHF PROGRESS P20 {CHB}{DLF,HYF,IEF}			FELTONS LEGEND 242 {SOD,CHB}{HYF}				
<b>CEZ\$</b> <b>19</b>	P42481042			SHF INTRSTATE D03 G06 ET				
<b>BIIS</b> <b>20</b>	SHF BOOMER P606 R17 ET {DLF,HYF,IEF}			PW VICTOR BOOMER P606 {SOD}{DLF,HYF,IEF}				
<b>CHBS</b> <b>24</b>	P42584103			KCF MISS H142 L388				
<b>BW</b> 0.5	<b>WW</b> 43	<b>YW</b> 57	<b>MM</b> 26	<b>M&amp;G</b> 48	<b>SC</b> 0.9	<b>FAT</b> 0.028	<b>REA</b> 0.25	<b>MARB</b> 0.31
PROGENY PRODUCTION								
BW Ratio		WW Ratio		YW Ratio		FAT Ratio		REA Ratio
3-101		2-98.5		2-94.5		6-108.3		6-97.3
								MARB Ratio
								6-118.2

- T101 is a cow we have flushed. This is a typical Progress daughter. Her strengths are maternal, longevity and carcass traits. These Progress daughters are a hot item. Her dam sold in our 2010 sale to Loewen Herefords and Cindy Pribil from Oklahoma. Heifer calf sired by K&B Sentinel 42X, calved on Feb. 7, 2012.



Lot 96 — SHF Miss M326 T16 ET

<b>96</b>		<b>SHF MISS M326 T16 ET</b>		Calved: Feb. 6, 2007	P42795994	H/P/S/D: P		
Selling: Full possession and 100% interest.								
<b>BMI\$</b> <b>25</b>	KCF BENNETT 3008 M326 {CHB}{DLF,HYF,IEF}			RRH MR FELT 3008 {SOD,CHB}{DLF,HYF,IEF}				
<b>CEZ\$</b> <b>17</b>	P42361822			KCF MISS 459 F284				
<b>BIIS</b> <b>22</b>	SHF MISS 105A M01			RF TARGET 105A				
<b>CHBS</b> <b>31</b>	P42293133			SHF SLINGER G91 K62 {DOD}				
<b>BW</b> 3.9	<b>WW</b> 59	<b>YW</b> 92	<b>MM</b> 17	<b>M&amp;G</b> 46	<b>SC</b> 1.3	<b>FAT</b> 0.009	<b>REA</b> 0.57	<b>MARB</b> 0.17
PROGENY PRODUCTION								
BW Ratio		WW Ratio		YW Ratio		FAT Ratio		REA Ratio
3-98.7		3-100		3-104.7		5-89.6		5-95.8
								MARB Ratio
								5-98

- T16 is a very good daughter of M326. She has one daughter in the herd and three sons in this sale. Her growth, carcass and Index values rank T16 near the top of the breed. We have flushed T16 once, resulting in two transferable embryos. Heifer calf sired by SHF Progress P20, calved on Feb. 7, 2012.



Searching for Heifer Calves

<b>97</b>		<b>SHF MISS M326 T82</b>		Calved: Feb. 18, 2007	P42795870	H/P/S/D: P		
Selling: Full possession and 100% interest.								
<b>BMI\$</b> <b>27</b>	KCF BENNETT 3008 M326 {CHB}{DLF,HYF,IEF}			RRH MR FELT 3008 {SOD,CHB}{DLF,HYF,IEF}				
<b>CEZ\$</b> <b>17</b>	P42361822			KCF MISS 459 F284				
<b>BIIS</b> <b>24</b>	SHF POSITIVE MISS 73C N52			RF POSTIVE PLUS 73C {SOD}{DLF,IEF}				
<b>CHBS</b> <b>30</b>	P42379939			SHF MISS KEYNOTE 20X E39 {DOD}				
<b>BW</b> 5.1	<b>WW</b> 60	<b>YW</b> 91	<b>MM</b> 15	<b>M&amp;G</b> 45	<b>SC</b> 1.4	<b>FAT</b> 0.015	<b>REA</b> 0.39	<b>MARB</b> 0.21
PROGENY PRODUCTION								
BW Ratio		WW Ratio		YW Ratio		FAT Ratio		REA Ratio
2-100.5		2-96.5		2-96.5		2-91.5		2-98
								MARB Ratio
								2-89

- T82 is a high volume, big ribbed daughter of M326. Heifer calf Z08, sired by KJ C&L J119 Logic, calved on Jan. 30, 2012.

# SANDHILL FARMS FEMALES

<b>98</b>	<b>SHF QUEEN M33 T120</b>							
	Calved: March 4, 2007	P42795883 H/P/S/D: P						
Selling: Full possession and 100% interest.								
<b>BMI\$</b> <b>17</b>	SHF MARSHAL 236G M33 {SOD,CHB} P42293307	REMITALL GOVERNOR 236G {SOD,CHB}						
<b>CEZ\$</b> <b>14</b>		SHF MISS KEYNOTE 20X E39 {DOD}						
<b>BIIS</b> <b>15</b>	SHF MISS 105A M06 ET P42293231	RF TARGET 105A						
<b>CHB\$</b> <b>20</b>		SHF INTERSTATE D03 G19						
<b>BW</b> 4.4	<b>WW</b> 47	<b>YW</b> 75	<b>MM</b> 18	<b>M&amp;G</b> 41	<b>SC</b> 0.8	<b>FAT</b> 0.002	<b>REA</b> 0.29	<b>MARB</b> -0.02
PROGENY PRODUCTION								
<b>BW Ratio</b>	<b>WW Ratio</b>	<b>YW Ratio</b>	<b>FAT Ratio</b>	<b>REA Ratio</b>	<b>MARB Ratio</b>			
3-100.7	3-102	3-102	3-114.7	3-100.3	3-97			



Lot 98 — SHF Queen M33 T120

- This is a very nice daughter of Marshal. She has had three bull calves and they have all been in the sale. Heifer calf sired by SHF Progress P20, calved on Feb. 25, 2012.

<b>99</b>	<b>SHF PROGRESS T138</b>							
	Calved: March 23, 2007	P42795811 H/P/S/D: P						
Selling: Full possession and 100% interest.								
<b>BMI\$</b> <b>25</b>	SHF PROGRESS P20 {CHB}{DLF,HYF,IEF} P42481042	FELTONS LEGEND 242 {SOD,CHB}{HYF}						
<b>CEZ\$</b> <b>22</b>		SHF INTRSTATE D03 G06 ET						
<b>BIIS</b> <b>23</b>	SHF MISS M326 R130 P42584029	KCF BENNETT 3008 M326 {CHB}{DLF,HYF,IEF}						
<b>CHB\$</b> <b>24</b>		SHF GOVERNESS 236G N112						
<b>BW</b> -0.3	<b>WW</b> 41	<b>YW</b> 59	<b>MM</b> 20	<b>M&amp;G</b> 41	<b>SC</b> 1.1	<b>FAT</b> -0.017	<b>REA</b> 0.12	<b>MARB</b> 0.24
PROGENY PRODUCTION								
<b>BW Ratio</b>	<b>WW Ratio</b>	<b>YW Ratio</b>	<b>FAT Ratio</b>	<b>REA Ratio</b>	<b>MARB Ratio</b>			
3-92	3-96	2-95	2-87.5	2-100	2-93			



Lot 99 — SHF Progress T138

- T138 is a Progress daughter that comes from the Radar cow family. She has a son in the Red Hills program in Oklahoma and is the dam of one of this year's Denver bulls. He is in the sale also. Heifer calf sired by SHF Wonder M326 W18, calved on Feb. 9, 2012.

<b>100</b>	<b>SHF RIB EYE R117 T33</b>							
	Calved: Feb. 9, 2007	P42795829 H/P/S/D: P						
Selling: Full possession and 100% interest.								
<b>BMI\$</b> <b>19</b>	SHF RIB EYE M326 R117 {CHB}{DLF,HYF,IEF} P42584003	KCF BENNETT 3008 M326 {CHB}{DLF,HYF,IEF}						
<b>CEZ\$</b> <b>14</b>		HVH MISS HUDSON 83K 8M						
<b>BIIS</b> <b>17</b>	SHF BOOMER P606 R43 P42584168	PW VICTOR BOOMER P606 {SOD}{DLF,HYF,IEF}						
<b>CHB\$</b> <b>26</b>		SHF LADY 512 M55						
<b>BW</b> 4.2	<b>WW</b> 55	<b>YW</b> 83	<b>MM</b> 23	<b>M&amp;G</b> 51	<b>SC</b> 1.0	<b>FAT</b> 0.015	<b>REA</b> 0.43	<b>MARB</b> 0.11
PROGENY PRODUCTION								
<b>BW Ratio</b>	<b>WW Ratio</b>	<b>YW Ratio</b>	<b>FAT Ratio</b>	<b>REA Ratio</b>	<b>MARB Ratio</b>			
3-104	3-103	2-103	2-119.5	2-104	2-85			



Lot 100 — SHF Rib Eye R117 T33

- This daughter of Rib Eye has also been a good producing cow. She has an udder built for longevity and progeny performance over 100 for both weaning and yearling. Heifer calf sired by SHF Progress P20, calved on Feb. 24, 2012.

# SANDHILL FARMS FEMALES

<b>101</b>		<b>SHF RIB EYE R117 T139</b>						
Calved: March 27, 2007		P42795856	H/P/S/D: P					
Selling: Full possession and 100% interest.								
<b>BMI\$</b> <b>21</b>	SHF RIB EYE M326 R117 {CHB}{DLF,HYF,IEF}		KCF BENNETT 3008 M326 {CHB}{DLF,HYF,IEF}					
<b>CEZ\$</b> <b>16</b>	P42584003		HVH MISS HUDSON 83K 8M					
<b>BIIS\$</b> <b>17</b>	SHF TARGET 634E N124		WRB TARGET 634E {CHB}					
<b>CHB\$</b> <b>31</b>	P42377190		SHF GOVERNESS 236G K53					
<b>BW</b>	<b>WW</b>	<b>YW</b>	<b>MM</b>	<b>M&amp;G</b>	<b>SC</b>	<b>FAT</b>	<b>REA</b>	<b>MARB</b>
5.5	56	84	21	49	0.8	-0.045	0.50	0.15
PROGENY PRODUCTION								
<b>BW Ratio</b>	<b>WW Ratio</b>	<b>YW Ratio</b>	<b>FAT Ratio</b>	<b>REA Ratio</b>	<b>MARB Ratio</b>			
3-110	2-107.5	2-104	2-98.5	2-106	2-109.5			

- Here is a Rib Eye daughter with some big performance ratios. She ranks in the top 1% of the breed for CHB\$ Index. Heifer calf sired by SHF Progress P20, calved on Feb. 23, 2012.



Lot 102 — SHF Miss M326 T23 ET

<b>102</b>		<b>SHF MISS M326 T23 ET</b>						
Calved: Feb. 10, /2007		P42795941	H/P/S/D: P					
Selling: Full possession and 100% interest.								
<b>BMI\$</b> <b>25</b>	KCF BENNETT 3008 M326 {CHB}{DLF,HYF,IEF}		RRH MR FELT 3008 {SOD,CHB}{DLF,HYF,IEF}					
<b>CEZ\$</b> <b>15</b>	P42361822		KCF MISS 459 F284					
<b>BIIS\$</b> <b>22</b>	SHF MISS 105A M01		RF TARGET 105A					
<b>CHB\$</b> <b>33</b>	P42293133		SHF SLINGER G91 K62 {DOD}					
<b>BW</b>	<b>WW</b>	<b>YW</b>	<b>MM</b>	<b>M&amp;G</b>	<b>SC</b>	<b>FAT</b>	<b>REA</b>	<b>MARB</b>
5.9	61	96	17	48	1.3	-0.009	0.63	0.18
PROGENY PRODUCTION								
<b>BW Ratio</b>	<b>WW Ratio</b>	<b>YW Ratio</b>	<b>FAT Ratio</b>	<b>REA Ratio</b>	<b>MARB Ratio</b>			
3-115	3-103.3	3-102.7	3-91	3-104	3-108			

- T23 is another M326 daughter. These females have become the standard by which many performance and carcass cattle are measured in the Hereford breed. Freckles and good. Heifer calf sired by KJ C&L J119 Logic, calved on Feb. 5, 2012.



Lot 103 — SHF Queen M33 T129

<b>103</b>		<b>SHF QUEEN M33 T129</b>						
Calved: March 10, 2007		P42795845	H/P/S/D: P					
Selling: Full possession and 100% interest.								
<b>BMI\$</b> <b>20</b>	SHF MARSHAL 236G M33 {SOD,CHB}		REMITALL GOVERNOR 236G {SOD,CHB}					
<b>CEZ\$</b> <b>17</b>	P42293307		SHF MISS KEYNOTE 20X E39 {DOD}					
<b>BIIS\$</b> <b>19</b>	SHF MISS M82 P74 {DOD}		SHF MONACO 236G M82					
<b>CHB\$</b> <b>16</b>	P42481146		SHF LADY 512 K28					
<b>BW</b>	<b>WW</b>	<b>YW</b>	<b>MM</b>	<b>M&amp;G</b>	<b>SC</b>	<b>FAT</b>	<b>REA</b>	<b>MARB</b>
1.9	38	61	17	36	1.0	0.003	0.02	0.06
PROGENY PRODUCTION								
<b>BW Ratio</b>	<b>WW Ratio</b>	<b>YW Ratio</b>	<b>FAT Ratio</b>	<b>REA Ratio</b>	<b>MARB Ratio</b>			
3-88.7	3-93	3-94.7	3-86	3-105.3	3-99			

- A Marshal daughter that will produce well. We have an outstanding Progress daughter in the herd out of the female. Heifer calf sired by SHF Progress P20, calved on Feb. 24, 2012.

# SANDHILL FARMS FEMALES

<b>104</b>		<b>SHF RADAR R125 T24 ET</b>							
		Calved: Feb. 8, 2007		P42795938		H/P/S/D: P			
Selling: Full possession and 100% interest.									
<b>BMIS</b> <b>22</b>	SHF RADAR M326 R125 (CHB){DLF,HYF,IEF}				KCF BENNETT 3008 M326 (CHB){DLF,HYF,IEF}				
<b>CEZ\$</b> <b>15</b>	P42584018				SHF POSTIVE MISS 73C M15				
<b>BIIS</b> <b>19</b>	HVH MISS HUDSON 83K 8M				MSU MF HUDSON 19H (SOD,CHB){HYF}				
<b>CHBS</b> <b>28</b>	P42247970				SUN VINDY MISS 83K				
<b>BW</b>	<b>WW</b>	<b>YW</b>	<b>MM</b>	<b>M&amp;G</b>	<b>SC</b>	<b>FAT</b>	<b>REA</b>	<b>MARB</b>	
2.5	55	82	24	51	1.1	0.018	0.24	0.27	
PROGENY PRODUCTION									
<b>BW Ratio</b>	<b>WW Ratio</b>	<b>YW Ratio</b>	<b>FAT Ratio</b>	<b>REA Ratio</b>	<b>MARB Ratio</b>				
3-104.7	3-107.7	3-107	3-114.7	3-102.3	3-114.7				

- This Radar daughter is very productive, boasting a 107 weaning weight ratio on her calves. She is also very balanced on the carcass traits, ranking in the top 3% for MARB. Heifer calf sired by SHF Vision R117 U38, calved on Feb. 14, 2012.

<b>105</b>		<b>SHF RADAR R125 T77</b>							
		Calved: Feb. 18, 2007		P42795849		H/P/S/D: P			
Selling: Full possession and 100% interest.									
<b>BMIS</b> <b>13</b>	SHF RADAR M326 R125 (CHB){DLF,HYF,IEF}				KCF BENNETT 3008 M326 (CHB){DLF,HYF,IEF}				
<b>CEZ\$</b> <b>8</b>	P42584018				SHF POSTIVE MISS 73C M15				
<b>BIIS</b> <b>10</b>	SHF QUEEN M33 P41 (DOD)				SHF MARSHAL 236G M33 (SOD,CHB)				
<b>CHBS</b> <b>24</b>	P42481114				SHF STOCK LADY 417 G14				
<b>BW</b>	<b>WW</b>	<b>YW</b>	<b>MM</b>	<b>M&amp;G</b>	<b>SC</b>	<b>FAT</b>	<b>REA</b>	<b>MARB</b>	
6.9	61	95	19	50	0.6	0.013	0.50	-0.03	
PROGENY PRODUCTION									
<b>BW Ratio</b>	<b>WW Ratio</b>	<b>YW Ratio</b>	<b>FAT Ratio</b>	<b>REA Ratio</b>	<b>MARB Ratio</b>				
3-103.7	3-102	2-97	2-77	2-97	2-89.5				

- Here is a very attractive Radar daughter. Lots of performance here, ranking in the top 1% of the breed for WW EPD. Due to calve with a heifer calf sired by SHF Progress P20.

<b>106</b>		<b>SHF MISS P52 T68</b>							
		Calved: Feb. 15, /2007		P42795861		H/P/S/D: P			
Selling: Full possession and 100% interest.									
<b>BMIS</b> <b>20</b>	SHF PORTERHOUSE M33 P52 (CHB)				SHF MARSHAL 236G M33 (SOD,CHB)				
<b>CEZ\$</b> <b>14</b>	P42481125				SHF LADY 512 L73 (DOD)				
<b>BIIS</b> <b>17</b>	SHF GOVERNESS 236G N97 (DOD)				REMITALL GOVERNOR 236G (SOD,CHB)				
<b>CHBS</b> <b>30</b>	P42377800				SHF INTERSTATE D03 G19				
<b>BW</b>	<b>WW</b>	<b>YW</b>	<b>MM</b>	<b>M&amp;G</b>	<b>SC</b>	<b>FAT</b>	<b>REA</b>	<b>MARB</b>	
5.2	60	96	21	51	1.1	-0.025	0.66	0.03	
PROGENY PRODUCTION									
<b>BW Ratio</b>	<b>WW Ratio</b>	<b>YW Ratio</b>	<b>FAT Ratio</b>	<b>REA Ratio</b>	<b>MARB Ratio</b>				
3-99.3	3-106.3	3-102.7	3-105.7	3-97.3	3-97				

- This Porterhouse daughter is from Brooke's original cow family. This Interstate family has been flushed and used in our program for many years. Heifer calf sired by K&B Sentinel 42X, calved on Feb. 7, 2012.

<b>107</b>		<b>SHF RADAR R125 T41</b>							
		Calved: Feb. 10, 2007		P42795841		H/P/S/D: P			
Selling: Full possession and 100% interest.									
<b>BMIS</b> <b>16</b>	SHF RADAR M326 R125 (CHB){DLF,HYF,IEF}				KCF BENNETT 3008 M326 (CHB){DLF,HYF,IEF}				
<b>CEZ\$</b> <b>8</b>	P42584018				SHF POSTIVE MISS 73C M15				
<b>BIIS</b> <b>13</b>	SHF BOOMER P606 R01 ET				PW VICTOR BOOMER P606 (SOD){DLF,HYF,IEF}				
<b>CHBS</b> <b>31</b>	P42583939				KCF MISS H142 L388				
<b>BW</b>	<b>WW</b>	<b>YW</b>	<b>MM</b>	<b>M&amp;G</b>	<b>SC</b>	<b>FAT</b>	<b>REA</b>	<b>MARB</b>	
6.6	67	102	31	64	1.0	0.024	0.74	0.12	
PROGENY PRODUCTION									
<b>BW Ratio</b>	<b>WW Ratio</b>	<b>YW Ratio</b>	<b>FAT Ratio</b>	<b>REA Ratio</b>	<b>MARB Ratio</b>				
3-107	3-115.7	2-108	2-109	2-105.5	2-124				

- This cow is in the top 1% of the breed for WW, M&G, YW, REA and CHBS Index. She is also in the top 2% of the breed for MM with a 31 EPD. She was the dam of one of last year's Denver bulls and a top seller in the sale. Heifer calf sired by SHF Kennedy 502R X36, calved on Feb. 10, 2012.

<b>108</b>		<b>SHF PROGRESS T49</b>							
		Calved: Feb. 10, 2007		P42795825		H/P/S/D: P			
Selling: Full possession and 100% interest.									
<b>BMIS</b> <b>21</b>	SHF PROGRESS P20 (CHB){DLF,HYF,IEF}				FELTONS LEGEND 242 (SOD,CHB){HYF}				
<b>CEZ\$</b> <b>16</b>	P42481042				SHF INTRSTATE D03 G06 ET				
<b>BIIS</b> <b>17</b>	SHF QUEEN M33 R63				SHF MARSHAL 236G M33 (SOD,CHB)				
<b>CHBS</b> <b>31</b>	P42584217				SHF LADY 512 L73 (DOD)				
<b>BW</b>	<b>WW</b>	<b>YW</b>	<b>MM</b>	<b>M&amp;G</b>	<b>SC</b>	<b>FAT</b>	<b>REA</b>	<b>MARB</b>	
4.7	61	104	28	58	1.3	-0.003	0.23	0.14	
PROGENY PRODUCTION									
<b>BW Ratio</b>	<b>WW Ratio</b>	<b>YW Ratio</b>	<b>FAT Ratio</b>	<b>REA Ratio</b>	<b>MARB Ratio</b>				
3-117.7	3-116.3	2-111.5	8-100.5	8-100.9	8-101.8				

- Another Progress daughter that comes from the Radar cow family. She has been flushed and produced 12 transferable embryos. A big producer with a top 1% of the breed for WW and YW. She has the highest YW EPD in the sale at 104. Heifer calf sired by K&B Sentinel 42X, calved on Feb. 8, 2012.

# SANDHILL FARMS COMMERCIAL HEIFERS

These commercial Hereford heifers are out of the heart of our commercial herd. Our commercial Hereford herd was started in the mid 1940s by my grandfather, Roy Schultz and continued by Dad, Ron Schultz.

<b>Lot 109-113</b>	Commercial Hereford heifers
<b>Lot 114-118</b>	Commercial Hereford heifers
<b>Lot 119-123</b>	Commercial Hereford heifers
<b>Lot 124-128</b>	Commercial Hereford heifers

<b>Lot 129-133</b>	Commercial Hereford heifers
<b>Lot 134-138</b>	Commercial Hereford heifers
<b>Lot 139-143</b>	Commercial Hereford heifers
<b>Lot 144-148</b>	Commercial Hereford heifers

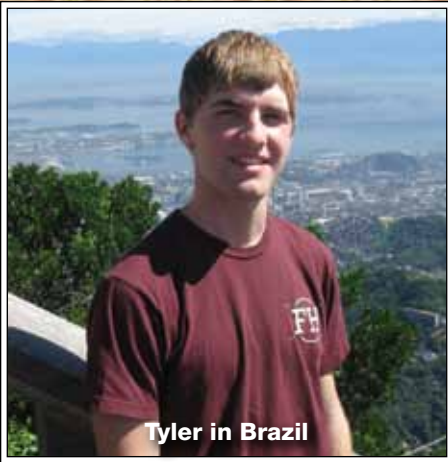


## HEREFORD BREED AVERAGE AND PERCENTILE BREAKDOWN

	CE	BW	WW	YW	MM	M&G	CEM	SC	FAT	REA	MARB	BMI\$	CEZ\$	BII\$	CHB
Top 1%	5.9	-1.0	64	104	32	58	4.8	1.5	-0.043	0.70	0.34	27	21	25	32
Top 10%	3.4	1.3	55	91	25	51	3.0	1.1	-0.020	0.49	0.18	21	18	19	27
Top 20%	2.4	2.2	52	85	23	47	2.3	1.0	-0.013	0.41	0.12	19	17	18	25
Breed Avg.	0.4	3.6	44	73	17	39	0.9	0.7	0.001	0.25	0.04	17	15	15	20



Russian Tour



Tyler in Brazil



KICKIN' IT IN KANSAS



Loading CRP Hay



National Ag Agent Tour



NWSS Grand or Reserve Grand Champion Pen of Bulls for last six of seven years.



**Sandhill  
Farms**

**The Brand That Exceeds Your Goals!**

**SHF Progress T101**



**SHF Miss M326 T23 ET**



**2048 280th Ave., Haviland, KS 67059**

**Kevin and Vera Schultz 620-995-4072**

**Kevin cell 620-546-4570 • Vera cell 620-546-3982**

**Ron and Arnita Schultz 620-348-4863**

**Kevin@sandhillfarms.com • [www.sandhillfarms.com](http://www.sandhillfarms.com)**